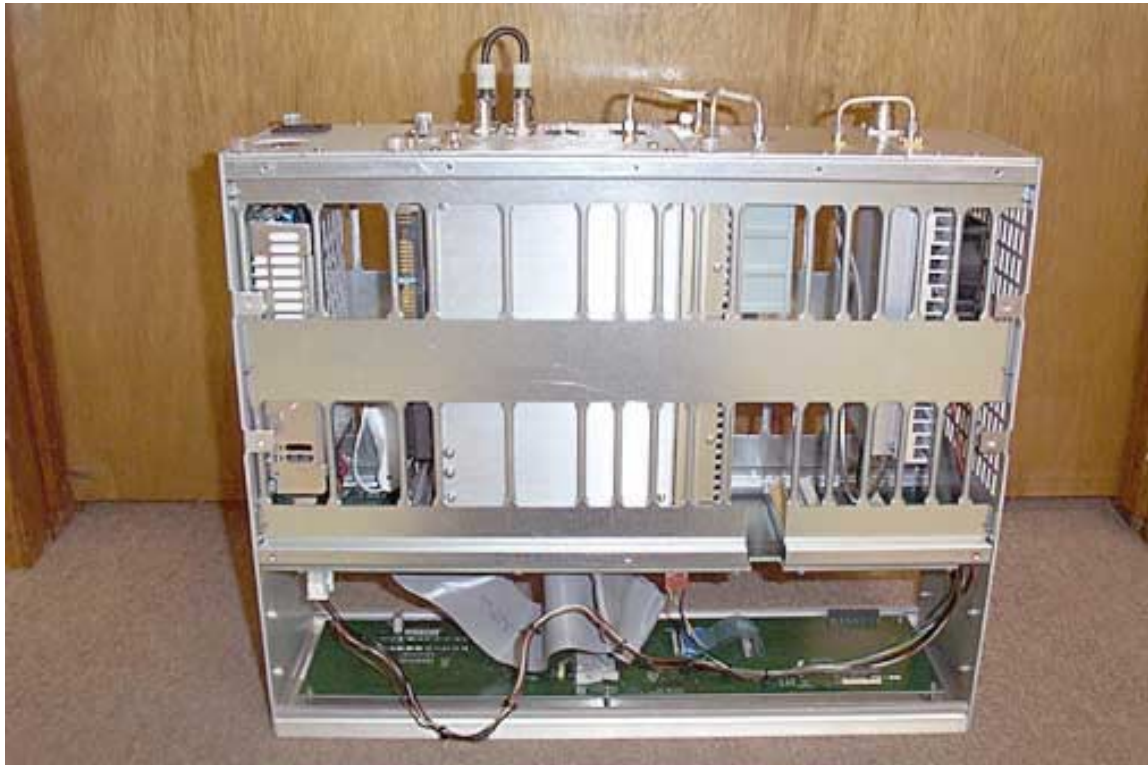




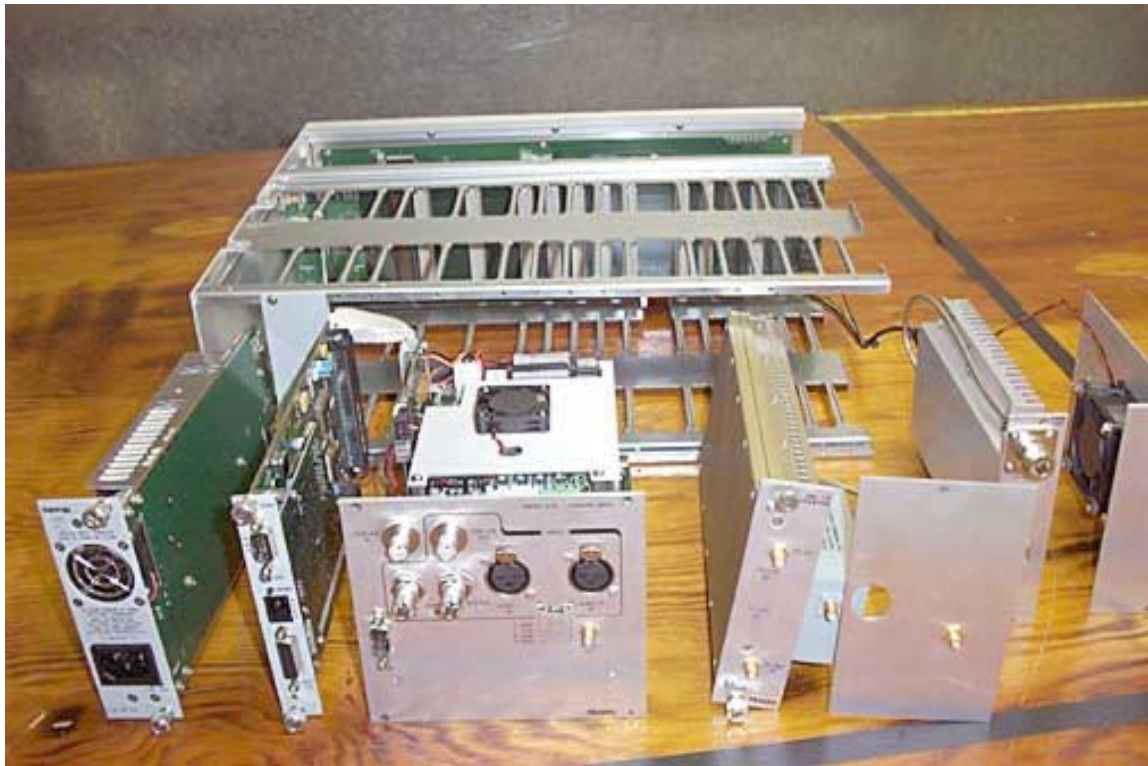
Top with Cover Removed



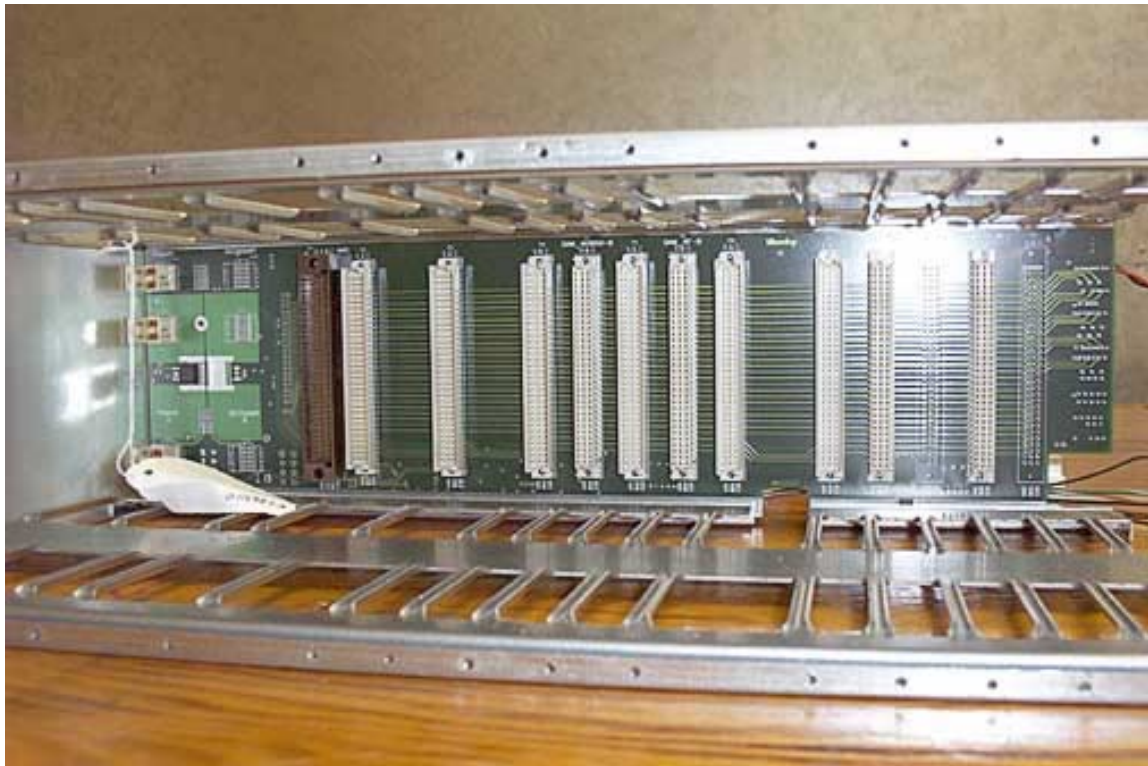
Bottom with Cover Removed



Overall Front View with Modules Removed



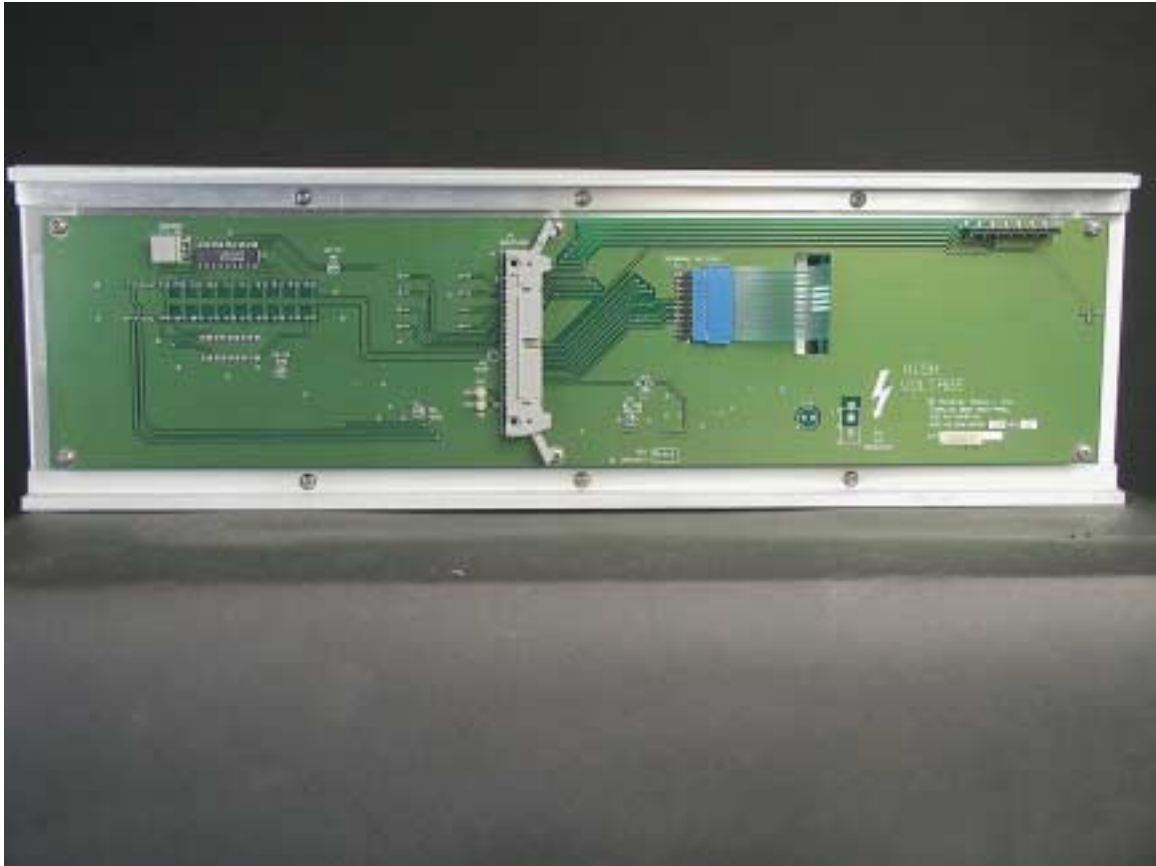
Overall View with Modules Removed



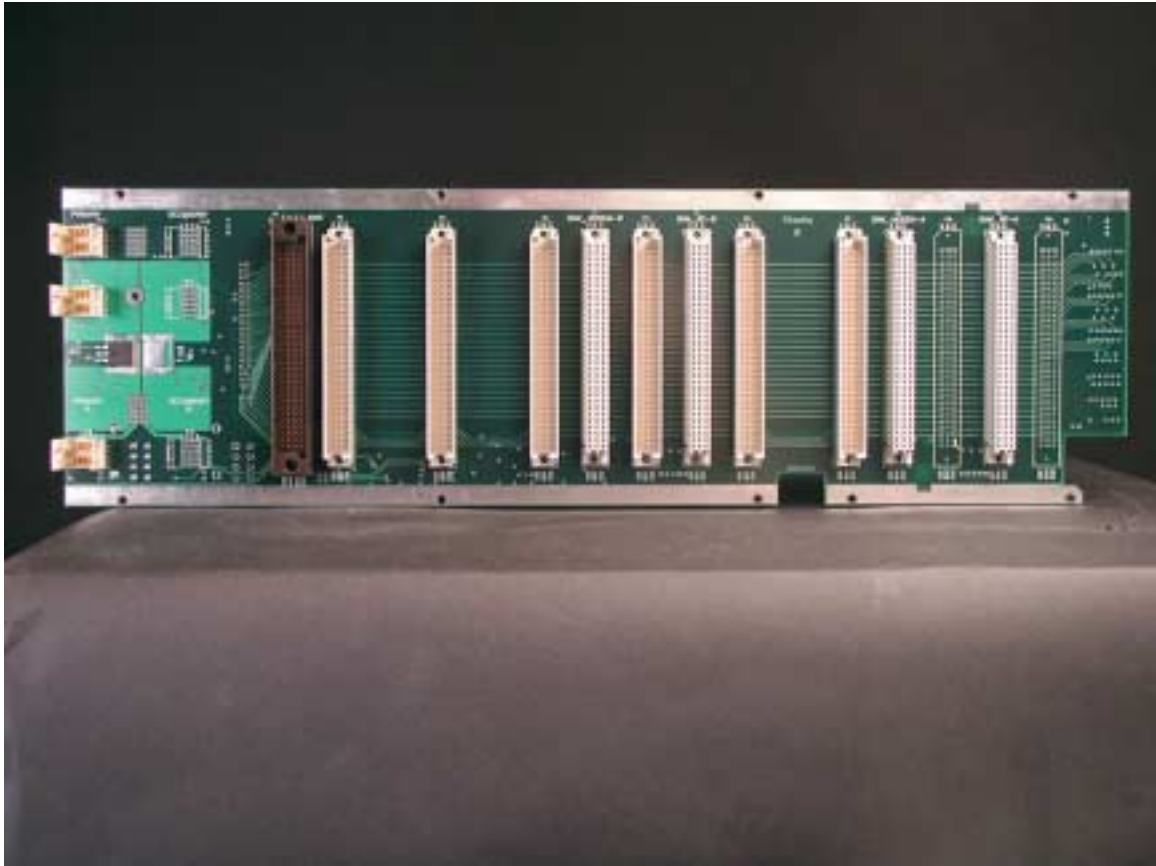
Modules Removed from 19 inch PCB



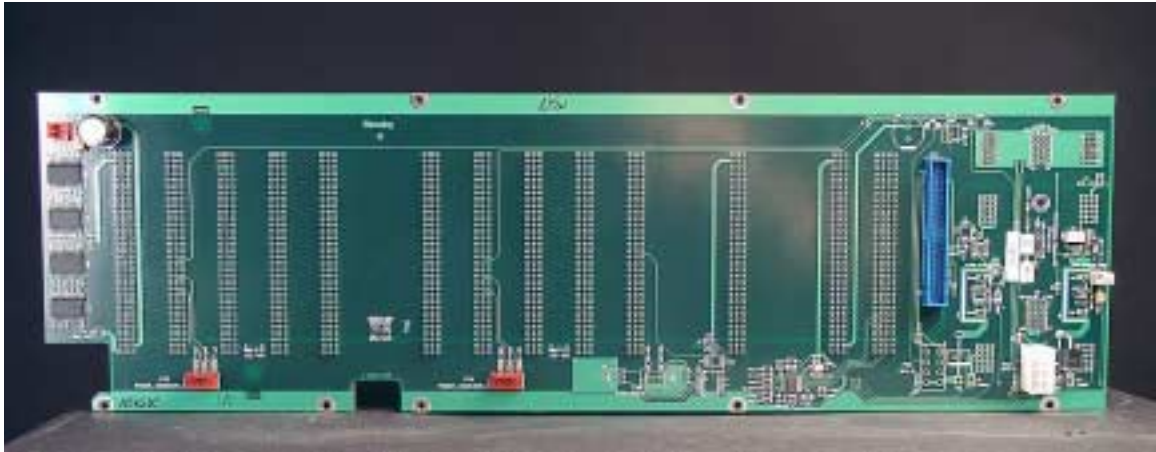
Power Supply and Amp Connections



Front Panel Rear



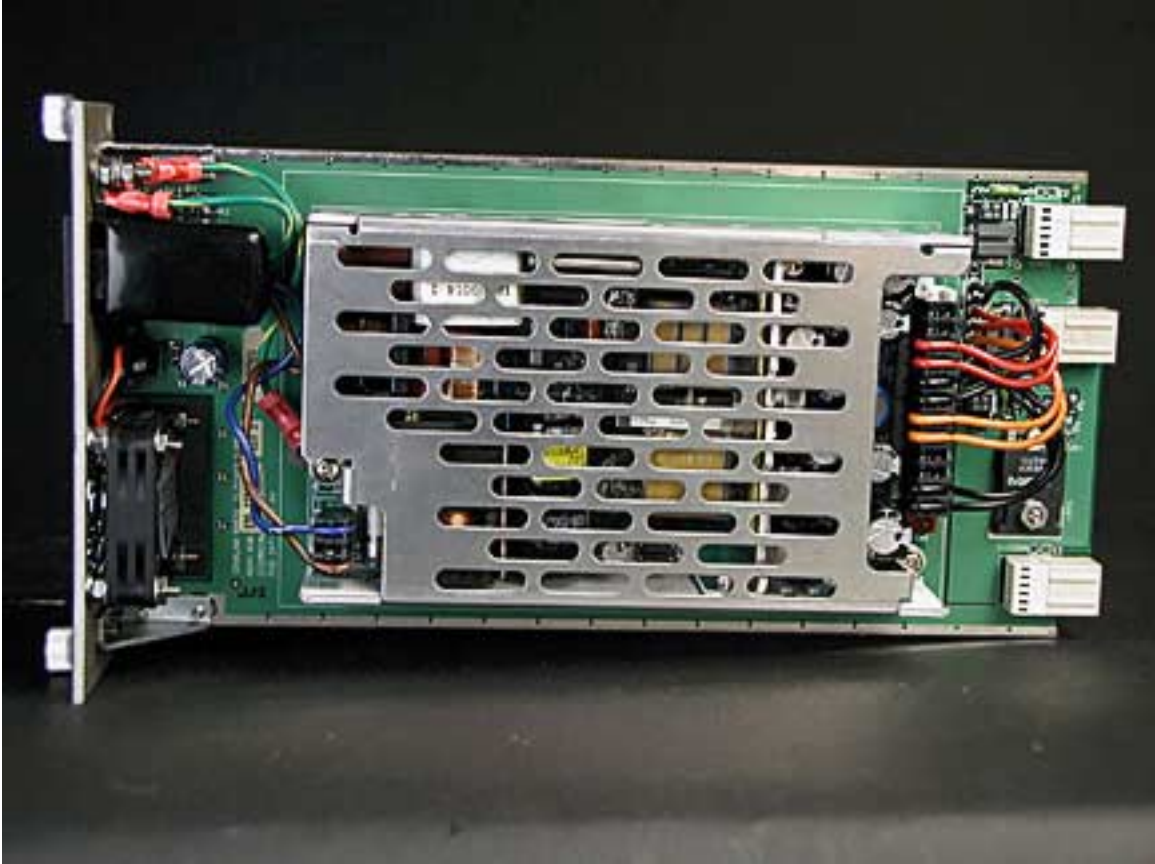
Backplane Rear



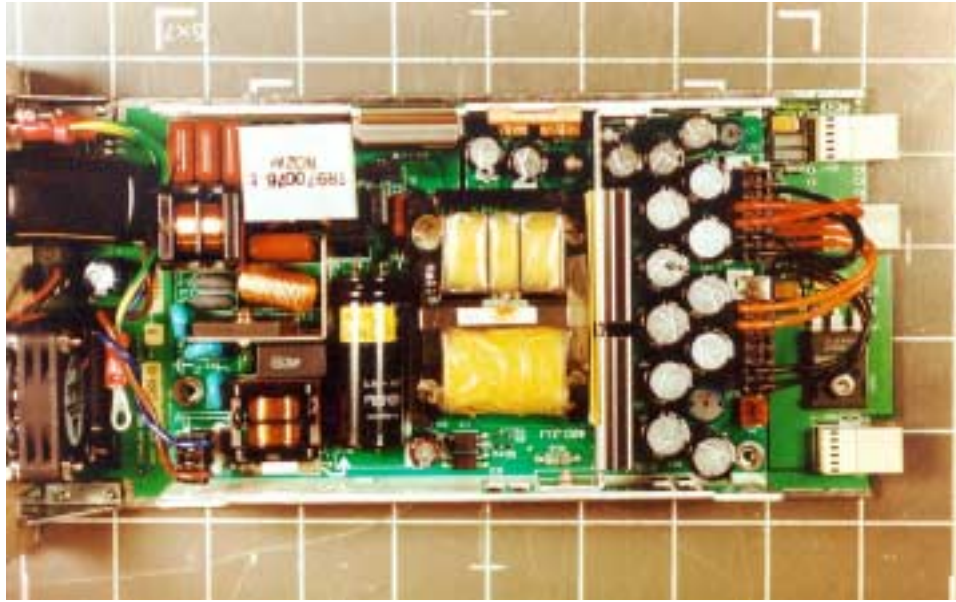
Backplane Front



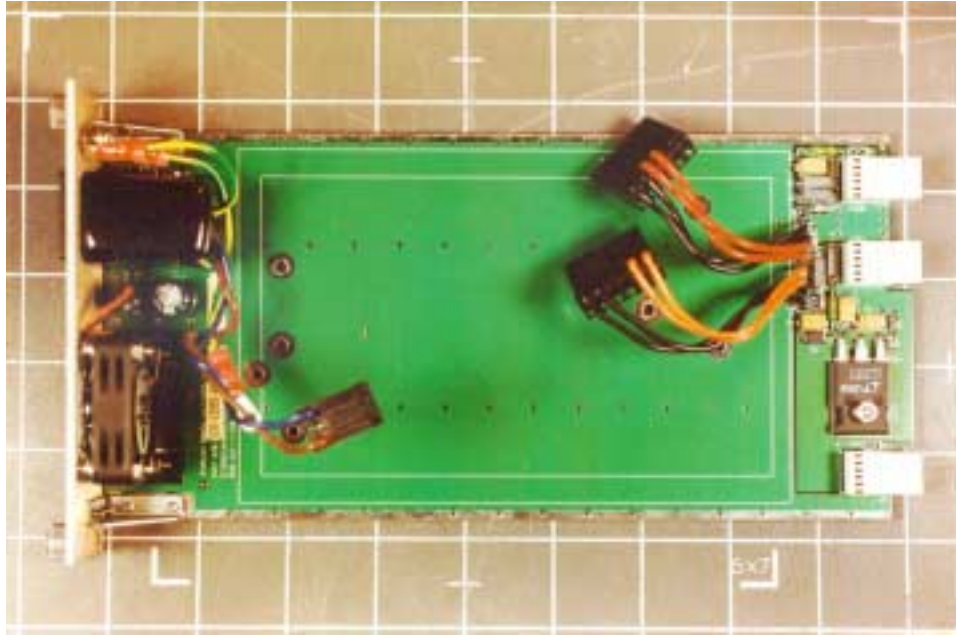
Power Supply Face Plate 1



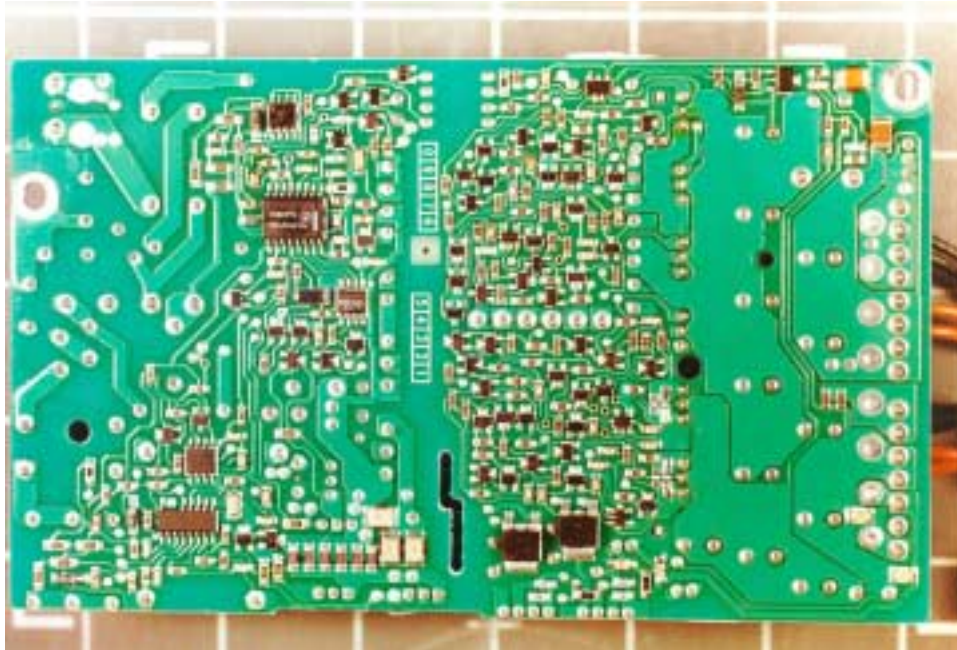
Power Supply Side 1



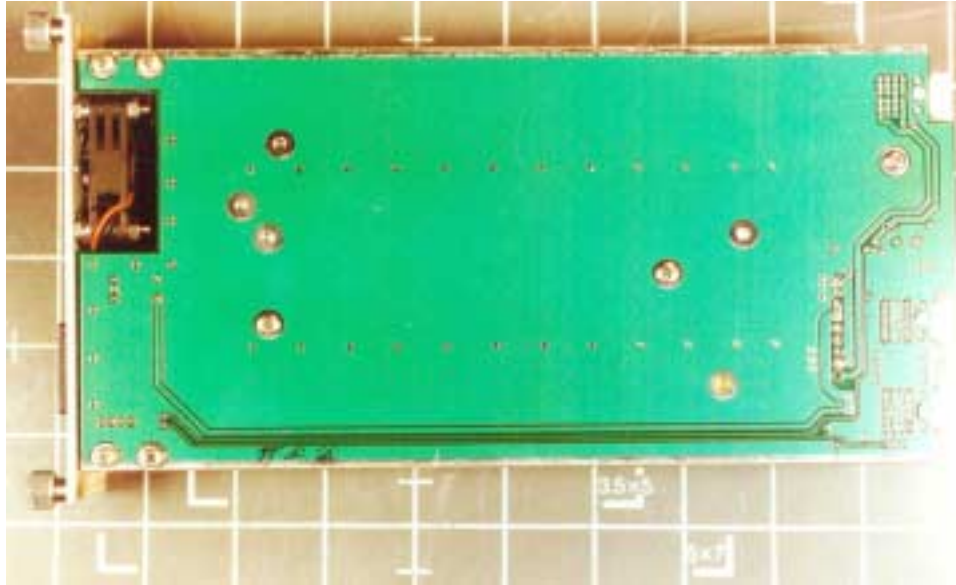
Bottom of PCB (Inner)



Front Panel



Top of Outer PCB



Bottom of Outer PCB



NMS Card Face Plate 1



NMS Card Side 1