

# Test setup photos of EUT

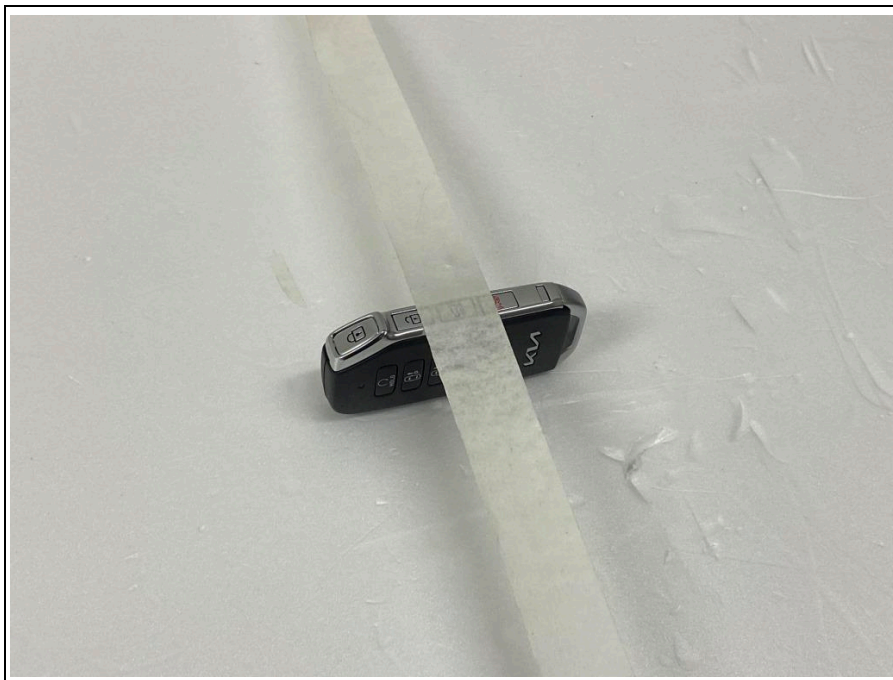
## 1. Orthogonal plane of EUT

- The testing was set in the three orthogonal planes and measured for each position (X, Y, Z).

### X-axis



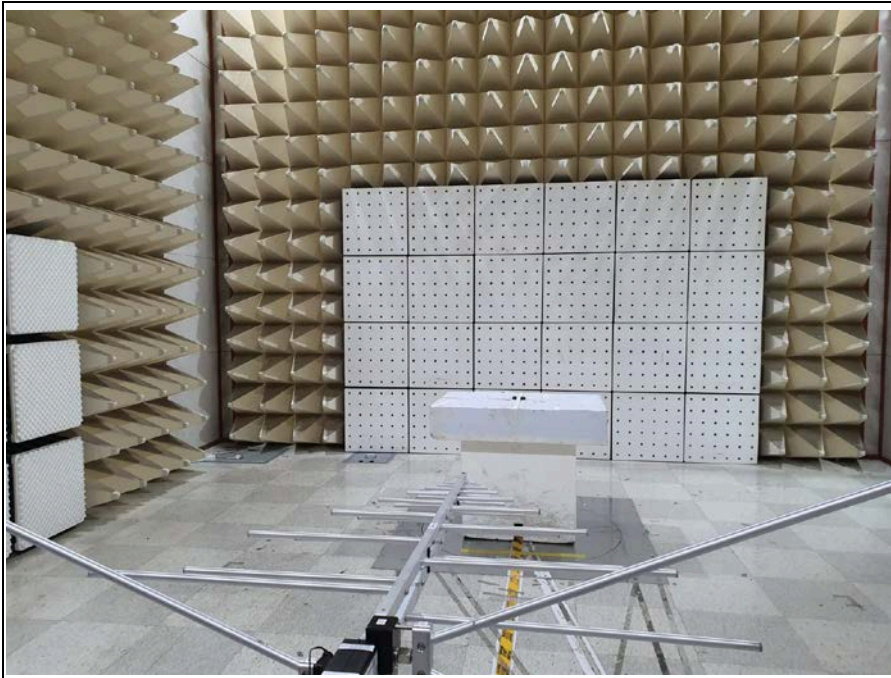
### Y-axis



Z-axis

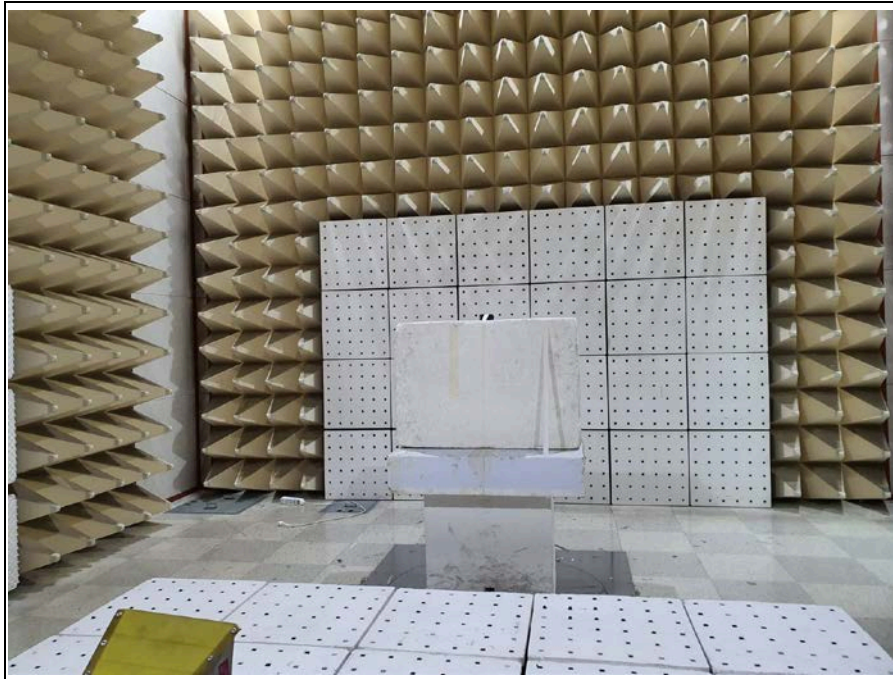


## 2. Photo of Radiated Spurious Emission Test (Below 1 GHz)





### 3. Photo of Radiated Spurious Emission Test (Above 1 GHz)



### 4. Photo of Conducted Test

