

# iStrike Shuttle Instructions

Size:W300 x H130 mm (double-sided printing)

(Folded size:W100 x H130 mm)

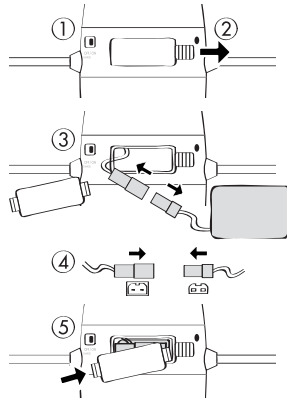
Color: 4C + 1C (Pantone 187C)

DATE: 2012-07-19

## FRONT

### Battery Placement Instructions

1. Turn off iStrike Shuttle. Make sure charging cable is unplugged.
2. Open battery latch.
3. Slide battery out of battery box and disconnect it from battery cable by holding each red plug and carefully pulling them apart.
4. Connect new 3.7V, 500mAh rechargeable Li-Po battery to battery cable by connecting red plugs correctly.
5. Slide battery into battery box and close latch.



### Battery Safety Precautions

The iStrike Shuttle is equipped with one Li-Po rechargeable battery, please pay attention to the following cautions:

- Do not attempt to connect any other battery to the iStrike Shuttle than a genuine Dream Cheeky Li-Po rechargeable battery.
- Be secure when placing the battery. If the battery is placed incorrectly, or with an incorrect type, there is a risk of explosion.
- Do not open the battery latch when the iStrike Shuttle is turned on, or when the charging cable is connected.
- Do not use force to connect the battery to the iStrike Shuttle.
- Do not touch the electrical wires directly when connecting or disconnecting the battery; only hold the red plugs and push or pull carefully, when the iStrike Shuttle is turned off.
- Do not expose the battery to fire, heat, or direct sunlight.
- Keep the battery away from flammable materials.
- Do not immerse the battery in water; keep it in a cold and dry environment.
- Do not strike or throw the battery against hard surface.
- Do not pierce the battery with a sharp object.

- Do not transport or store the battery together with metal objects, such as necklaces, keys, etc.
- Do not use or charge the battery if it looks inflated.
- Never charge the battery unattended.
- Do not disassemble, modify, or short circuit the battery.
- In the unlikely event of leakage or explosion, use sand or a chemical fire extinguisher to extinguish the battery.
- Keep battery out of reach of children.
- Dispose of the battery separately at your local waste recycling centre. Do not dispose of it in your household waste bin.

Power supply: ---  
Battery rating: DC 3.7V, 500mAh

### FCC Statement

This device complies with Part 15 of the FCC Rules. Operation is subject to the following two conditions: (1) this device may not cause harmful interference, and (2) this device must accept any interference received, including interference that may cause undesired operation.

**WARNING:** Changes or modifications not expressly approved by the party responsible for compliance could void the user's authority to operate the equipment.

**NOTE:** This equipment has been tested and found to comply with the limits for a Class B digital device, pursuant to Part 15 of the FCC Rules. These limits are designed to provide reasonable protection against harmful interference in a residential installation.

This equipment generates uses and can radiate radio frequency energy and, if not installed and used in accordance with the instructions, may cause harmful interference to radio communications. However, there is no guarantee that interference will not occur in a particular installation. If this equipment does cause harmful interference to radio or television reception, which can be determined by turning the equipment off and on, the user is encouraged to try to correct the interference by one or more of the following measures:

- Reorient or relocate the receiving antenna.
- Increase the separation between the equipment and receiver.
- Connect the equipment into an outlet on a circuit different from that to which the receiver is connected.
- Consult the dealer or an experienced radio/TV technician for help.

## DREAM CHEEKY™ iStrike Shuttle



NOT FOR PRINT

Compatible for iPod iPhone iPad

Available on the App Store

## BACK

### Set up & Charge

1. Go to [www.dreamcheeky.com](http://www.dreamcheeky.com) and click on "Download and Support".
2. Download the latest version of the Dream Cheeky iStrike Controller App.  
**Note:** You need an iTunes account to download apps.
3. Follow the instructions in the App Store to set up your Controller.
4. For more details on how to use the iStrike Shuttle and its app, download and read the instruction manual from the "Download and Support" section on [www.dreamcheeky.com](http://www.dreamcheeky.com).
5. Charge the iStrike Shuttle by plugging the included 2.5mm jack to USB cable into the charging port of the iStrike Shuttle and into your power adapter. Make sure the power button is in the "Off (Charge)" position.  
**Note:** Fully charge the iStrike Shuttle before first use.

### Learn More

Find out more about the iStrike Shuttle on [www.dreamcheeky.com/iStrike-Shuttle](http://www.dreamcheeky.com/iStrike-Shuttle).

To view the iStrike Shuttle Instruction Manual, go to [www.dreamcheeky.com/download-support](http://www.dreamcheeky.com/download-support).

Visit [www.dreamcheeky.com/contact-us](http://www.dreamcheeky.com/contact-us) for technical support. For complete instructions and important safety information, see the iStrike Shuttle Instruction Manual at [www.dreamcheeky.com/download-support](http://www.dreamcheeky.com/download-support).

To order spare parts go to [www.dreamcheeky.com/cart](http://www.dreamcheeky.com/cart).

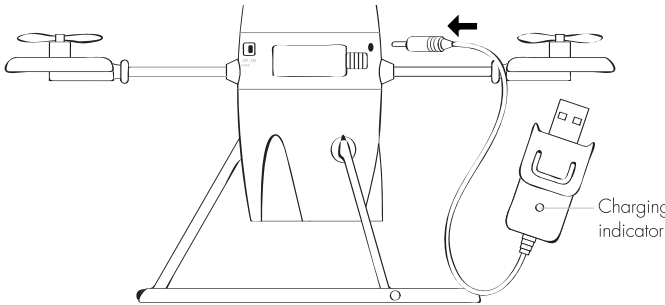
Internet access required; fees may apply. The App Store is available in selected countries.

"Made for iPod," "Made for iPhone," and "Made for iPad" mean that an electronic accessory has been designed to connect specifically to iPod, iPhone, or iPad, respectively, and has been certified by the developer to meet Apple performance standards. Apple is not responsible for the operation of this device or its compliance with safety and regulatory standards. Please note that the use of this accessory with iPod, iPhone, or iPad may affect wireless performance.

iPad, iPhone and iPod touch are trademarks of Apple Inc., registered in the U.S. and other countries.

### Fully charge the iStrike Shuttle

Battery is fully charged when charging indicator turns off.



### Charging Safety Precautions

- Charge the Dream Cheeky iStrike Shuttle by using the iStrike Shuttle charging cable with an Apple USB Power Adapter, or use a similar USB Power Adapter with an output of 5V or 5.1V and a minimum current of 1A.
- Do not attempt to charge the iStrike Shuttle with a USB port on a computer or any other USB ports that have different specifications than described above.
- Use the iStrike Shuttle charging cable to charge the 3.7V LiPo battery that was supplied with the iStrike Shuttle. Do not attempt to charge any other batteries with this cable.
- Charge the battery at least once every six months.

### Operation Safety Precautions

- Warning! - Risk of eye injury.
- Before use, download the Instruction Manual from [www.dreamcheeky.com/download-support](http://www.dreamcheeky.com/download-support), read it carefully and follow the instructions.
- The iStrike Shuttle is not a toy, keep out of reach of children.
- Do not touch the rotors when the iStrike Shuttle is turned on.
- Keep eyes, hands, hair, and loose clothes away from moving parts.
- Operate the iStrike Shuttle at a safe distance of at least 3 feet (1 meter) in front of you.
- Spectators should stand behind the operator.
- Never fly the iStrike Shuttle above or near children, friends or animals.
- Never operate the iStrike Shuttle when it has damaged parts.
- Operating the iStrike Shuttle requires specific skills and should be practiced under supervision of an experienced adult.
- Only operate the iStrike Shuttle indoors.
- Under the environment with electrostatic discharge, the iStrike Shuttle may malfunction and user is recommended to reset the unit.
- Turn off the iStrike Shuttle when it is not in use.

