

LUXE® 8700x

INSTALL GUIDE

WARNING

- Only use the provided Equinox Payments® A/C Power Adapter and/or other Equinox supplied cables. Using non-compliant cable/power adapter may damage the device.
- Do not use if visibly damaged. Do not disassemble.
- Do not expose to temperatures below -10 °C or above 60 °C storage (not powered).
- Intended operating humidity range is 5% to 95% rh (non-condensing).
- This device is not designed or certified to be used in a flammable atmosphere where there is a risk of explosion.
- Keep out of reach of children or pets.
- Do not incinerate or crush.
- Do not use outdoors.

SAFETY INFORMATION

The Luxe device must be used within the operating conditions, electrical supply requirements, environmental conditions and connection requirements as specified below:

- Power Supply: Device must be connected to correct electrical

- supply. Connection to inappropriate supply may damage or destroy this device(s), thereby invalidating its warranty(s).
- Only operate device within temperature range of 0 °C - 45 °C.
- Hazardous Environments: These devices must NOT be installed in locations where there is danger of explosion.

COMPLIANCE

- FCC ID: COL-LUXE8700X

- IC: 2279B-LUXE8700X

Device complies with Part 15 of FCC Rules & Industry Canada license-exempt RSS standard(s). Operation subject to following two conditions:

- This device may not cause interference, and
- This device must accept any interference, including interference that may cause undesired operation of the device.

NOTE: This equipment has been tested and found to comply with the limits for a Class B digital device, pursuant to part 15 of the FCC Rules. These limits are designed to provide reasonable protection against harmful interference in a residential installation. This equipment generates, uses and can radiate radio frequency energy and, if not installed and used in accordance with the instructions, may cause harmful interference to radio communications. However, there is no guarantee that interference will not occur in a particular installation. If this equipment does cause harmful interference to radio or television reception, which can be determined by turning the equipment off and on, the user is encouraged to try to correct the interference by one or more of the following measures:

- Reorient or relocate the receiving antenna.
- Increase the separation between the equipment and receiver.
- Connect the equipment into an outlet on a circuit different from that to which the receiver is connected.
- Consult the dealer or an experienced radio/TV technician for help.

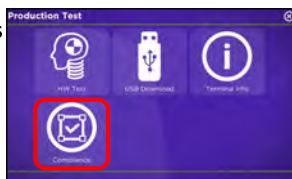
The equipment fulfills the applicable FCC requirements with respect to RF exposure to electromagnetic fields, when used for the purpose and in the way it is intended and described.

WARNING: Changes or modifications to the equipment that are not expressly approved by the responsible party for compliance could void the user's authority to operate the equipment. If trouble is experienced with this device, please contact Equinox Payments at 1.877.497.3726 for repair or warranty information. If this device is causing harm to the telephone network, the telephone company may request that you disconnect this device until the problem is resolved.

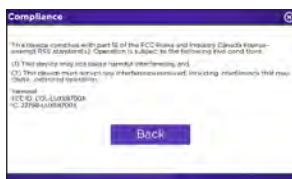
NOTICES

If a Power Supply and/or Power Cable was NOT shipped with the Luxe device, please contact your Equinox distributor for available options.

TO OBTAIN FCC & ICED CERTIFICATION NUMBERS
From the Desktop screen, click the **Production Test** icon & then the **Compliance** icon to display the FCC/IC information (see *Compliance* screen).



The *Compliance* screen displays the FCC/IC certification numbers applicable to the device.



CLEANING & DISINFECTING THE DEVICE

WARNING:

- Do NOT use industrial strength or an abrasive cleaner (e.g., bleach, aerosol spray or solvent) as it may damage or scratch the device/screen.

TO CLEAN: Apply distilled water/mild cleaner onto a soft, lint free cloth. Gently wipe the device with the moistened cloth.

NOTE: Avoid excessive wiping & do NOT use abrasive cloths, towels, paper towels or similar as it may damage device.

TO DISINFECT: Use a 70% Isopropyl Alcohol Wipe & gently wipe hard, nonporous outside surface of the device (e.g., display, key-pad or other exterior surfaces). Wipe surface with a dry, lint-free cloth to remove any remaining moisture or residue from device. **NOTE:** Avoid excessive wiping & do NOT use abrasive cloths, towels, paper towels or similar as it may damage device.

Do NOT allow moisture in any openings & never submerge device in any cleaning agent (containing bleach, solvent or hydrogen peroxide).

CONTACT US

For Service or Support, contact Equinox:

- 1.877.497.3726 or 480.551.7800
- ProductSupport@equinoxpayments.com
- Contact your Equinox Sales rep directly

Equinox Payments®

9045 E. Pima Center Pkwy, Suite 1, Scottsdale, AZ 85258, USA | Tel: +1.877.497.3726 | Fax: +1.480.551.7811 | www.EquinoxPayments.com

© 2024 Equinox Payments, all rights reserved. Equinox Payments & the Equinox Payments logo are registered trademarks of Equinox Payments. Information within this guide may not match the Luxe device and its accessories exactly and thus are subject to change.
940670-001E Rev. 01 07/24

LUXE® 8700x

INSTALL GUIDE



NOTICE: Follow ALL steps on page 2 to correctly connect & power the Luxe 8700x device. Improper installation may cause serious damage to the device, resulting in possible repairs at the owner's expense. If you are unsure or have any questions, contact an Equinox Payments Customer Support Specialist directly at 1.877.497.3726 or ProductSupport@equinoxpayments.com.

SHIPPING CONTENTS*

- Luxe 8700x Device
- Installation Guide
- Equinox Screen Wipe
- Communications & Power Bundle options**
 - Desktop Power w/Ethernet to USB-C Hub Cable Bundle (040405-001E)
 - Desktop Power w/USB-B to USB-C Hub Cable Bundle (040405-003E)
 - Desktop USB to USB-C Cable Bundle (040405-004E)
 - Stand Power w/Ethernet to USB-C Hub Cable Bundle (040405-101E)
 - Stand Power w/USB-B to USB-C Hub Cable Bundle (040405-103E)
 - Stand USB to USB-C Cable (810471-004E)



* Contents may not match exactly as shown. ** Must order bundle separately & may arrive separately.



9 4 0 6 7 0 - 0 0 1 E

EQUINOX®

LUXE® 8700x INSTALLATION GUIDE

EQUINOX®

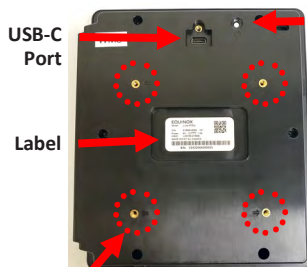
STEP 1: UNPACK and INSPECT EQUIPMENT (SAVE SHIPPING MATERIALS)

Note: Communications and Power Cables are shipped separately. If you ordered a Desktop Bundle, you will receive a Desktop Stand Kit.



WARNING: Do not use a damaged or tampered device. Notify the shipping company and your Service Provider or Equinox contact.

STEP 2: TURN DEVICE OVER and LOCATE PORTS and RESET BUTTON



Mounting Holes — For STAND installation, use M3 threaded mounting screws (no more than 8mm of engagement; arranged in a 50mm x 50mm pattern).

Reset Button
Note: Pushing this button restarts the device.

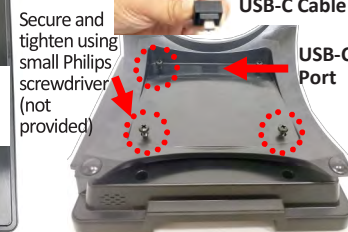


STEP 3: INSERT the USB-C CABLE into the USB-C PORT



For STAND Installation: Insert USB-C cable end into the USB-C port.

For DESKTOP Installation: Align Desktop Kit over device & use 4 screws to secure. Insert USB-C cable end into USB-C port.



CONNECT CABLES* (BASED ON YOUR SPECIFIC CONNECTIVITY CONFIGURATION)

Communications & Power Bundle options:

- ***Desktop Power w/Ethernet to USB-C Hub Cable Bundle (040405-001E)**
 - Desktop Power w/Ethernet to USB-C Hub Cable (810472-001E), Ethernet Cable (810459-002E), Power Supply (870088-001E), Power Cable (810003-001) & Desktop Stand Kit (040404-001E)
- ***Desktop Power w/USB-B to USB-C Hub Cable Bundle (040405-003E)**
 - Desktop Power w/USB-B to USB-C Hub Cable (810472-003E), USB-A/B Cable (810460-001E), Power Supply (870088-001E), Power Cable (810003-001) & Desktop Stand Kit (040404-001E)
- ***Desktop PUSB to USB-C Cable Bundle (040405-004E)**
 - Desktop PUSB to USB-C Cable (810472-004E), Desktop Stand Kit (040404-001E)
- ***Stand Power w/Ethernet to USB-C Hub Cable Bundle (040405-101E)**
 - Stand Power w/Ethernet to USB-C Hub Cable (810471-001E), Ethernet Cable (810459-002E), Power Supply (870088-001E) & Power Cable (810003-001)
- ***Stand Power w/USB-B to USB-C Hub Cable Bundle (040405-103E)**
 - Stand Power w/USB-B to USB-C Hub Cable (810471-003E), USB-A/B Cable (810460-001E), Power Supply (870088-001E) & Power Cable (810003-001)
- ***Stand PUSB to USB-C Cable (810471-004E)**

*Use only Equinox supplied CABLES



Connect Power



WARNING: (1) Do NOT connect the device to the Power source until ALL cables and peripherals are attached. (2) Power Supply: Device must be connected to correct electrical supply. Connection to inappropriate supply may damage or destroy this device(s), thereby invalidating its warranty (s). (3) Do NOT plug the Power Supply into an outdoor outlet or operate device outdoors. (4) Disconnecting the Power or Restarting the device during a transaction may cause unstored data files to be lost.

DISCONNECT POWER SOURCE BEFORE REPLACING THE LUXE 8700x

WARNING: This device is NOT hot-swappable. Always disconnect power before proceeding.

1. Disconnect the power source
2. Turn the device over
3. Extract the USB-C cable from the USB-C port
4. Remove old device
5. Install new device (and follow main Steps 1-4 from above)



BEST PRACTICE
TIPS

To ensure the Security & Compliance of the Luxe 8700x (as suggested by the *PCI Security Standards Council*), it is highly recommended that the Merchant monitor their terminal environment each day:

- Visually check there are NO external physical damage to the device:
 - Inspect device for signs of case separation
 - Verify NO holes are drilled into the device (these may be covered with new stickers)
 - Verify NO additional cables are protruding from the device and/or associated equipment
 - Ensure Keypad is firmly in place
- Visually inspect the MSR & Smart Card Reader slots for any foreign objects
 - Physically check to ensure no foreign object is obstructing, hampering or preventing the sliding or insertion of a card

For additional guidance about skimming prevention, refer to the *Skimming Prevention: Best Practices for Merchants* document available at:
www.pcisecuritystandards.org



RECOMMENDATIONS

- Use a Power Surge Protector to protect against possible damage caused by electrical surges and lightning strikes
- Use an approved Stand to mount the device to fit your environment
- Use a grounded anti-static wrist strap when handling electrostatically sensitive devices
- Use commercial MSR card reader cleaning cards to prevent MSR reading problems.
NOTE: Do NOT attempt to clean the Smartcard Reader using the MSR card reader cleaning card. Contact your Equinox distributor or service provider for proper Smartcard Reader service

TROUBLE-
SHOOTING

- **DEVICE DOES NOT START/POWER ON:** Ensure device is plugged into a dedicated power source. Check the Power Cable connector to ensure it is plugged in properly. Ensure all other Equinox supplied cables are secure & connected. Check connected screws.
- **DEVICE DISPLAY DOES NOT SHOW INFORMATION CORRECTLY:** Check all cable connections to ensure proper connectivity. Check connected screws & tighten if necessary.
- **DEVICE FAILS TO PROCESS A TRANSACTION:** Check the Magnetic Card Reader & Smart Card Reader to ensure: 1) problem is NOT a defective card, 2) proper swiping/insertion technique is used, 3) confirm manual transaction works.
- **DEVICE COMMUNICATION NOT RESPONDING:** Check all cable connections to ensure proper connectivity.
- **KEYPAD DOES NOT RESPOND:** Press a key and check the display to see if the correct character appears. If problem persists, see RETURN DEVICE FOR SERVICE bullet below.
- **RETURN DEVICE FOR SERVICE:** If you do need to return a device to Equinox, click on the link to access the [REPAIR](https://www.equinoxpayments.com/repair/) form (<https://www.equinoxpayments.com/repair/>).

*ACCESSORIES
*Use only Equinox supplied CABLES



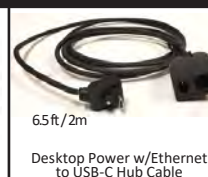
6ft / 1.83m
Power Cable & Power Supply
(810003-001) & (870088-001E)



10ft / 3m
Ethernet Cable
(810459-002E)



6ft / 1.83m
USB-A/B Cable
(810460-001E)



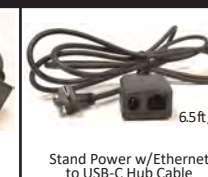
65ft / 2m
Desktop Power w/Ethernet
to USB-C Hub Cable
(810472-001E)



65ft / 2m
Desktop Power w/USB-B
to USB-C Hub Cable
(810472-003E)



13ft / 4m
Desktop PUSB
to USB-C Cable
(810472-004E)



65ft / 2m
Stand Power w/Ethernet
to USB-C Hub Cable
(810471-001E)



65ft / 2m
Stand Power w/USB-B
to USB-C Hub Cable
(810471-003E)



13ft / 4m
Stand PUSB
to USB-C Cable
(810471-004E)