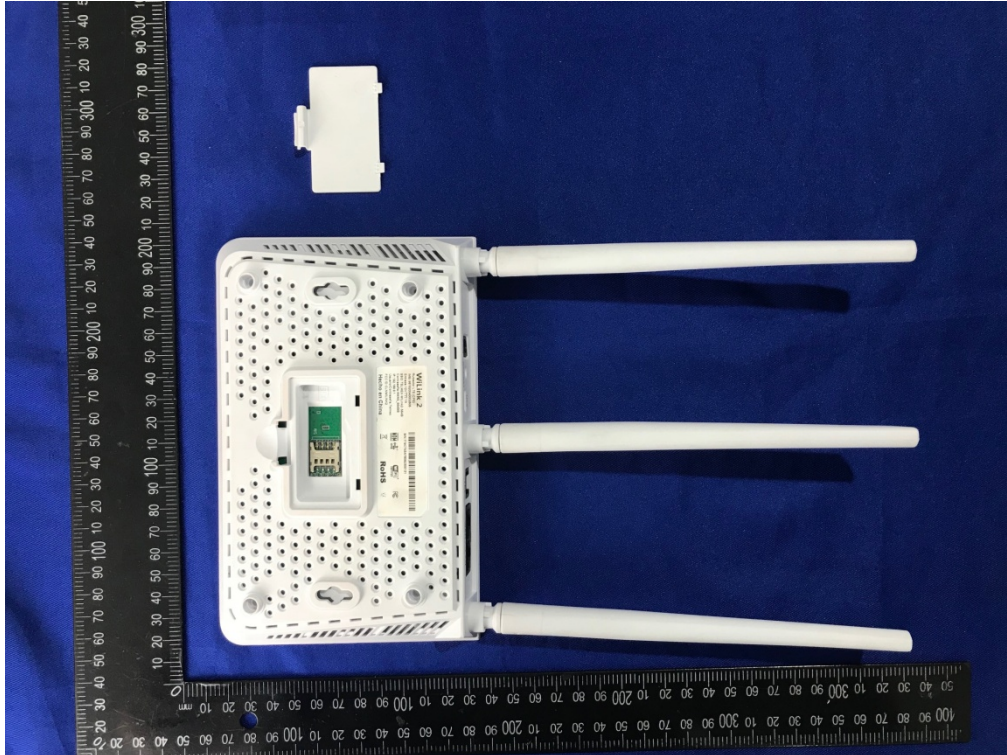
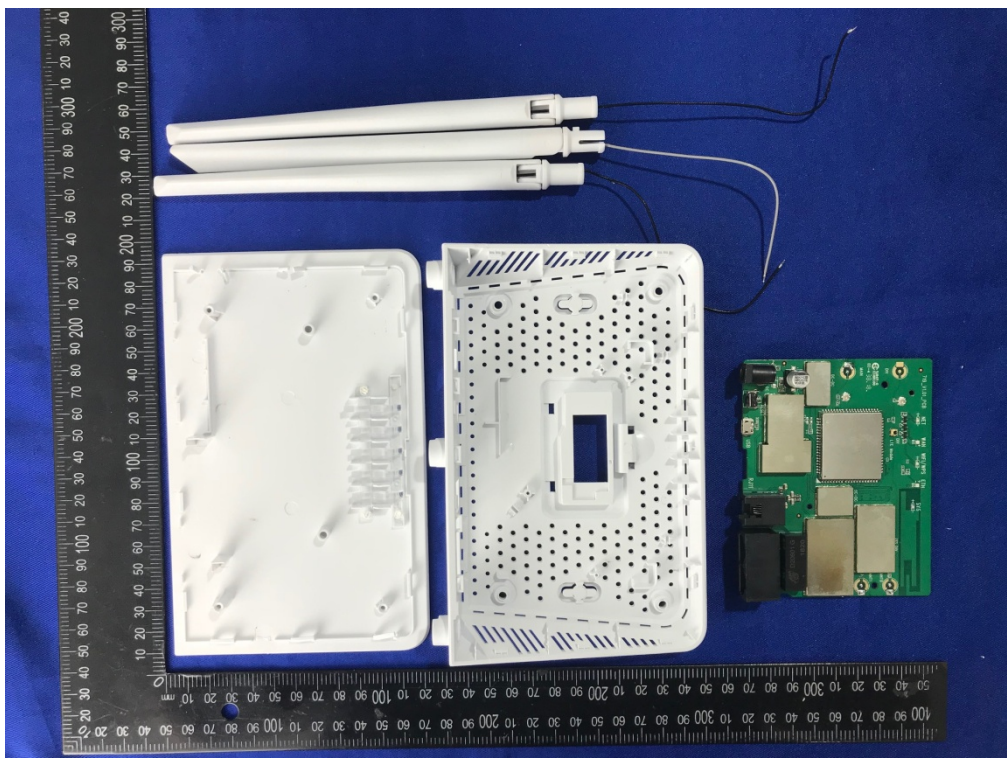


EXHIBIT C - EUT INTERNAL PHOTOGRAPHS

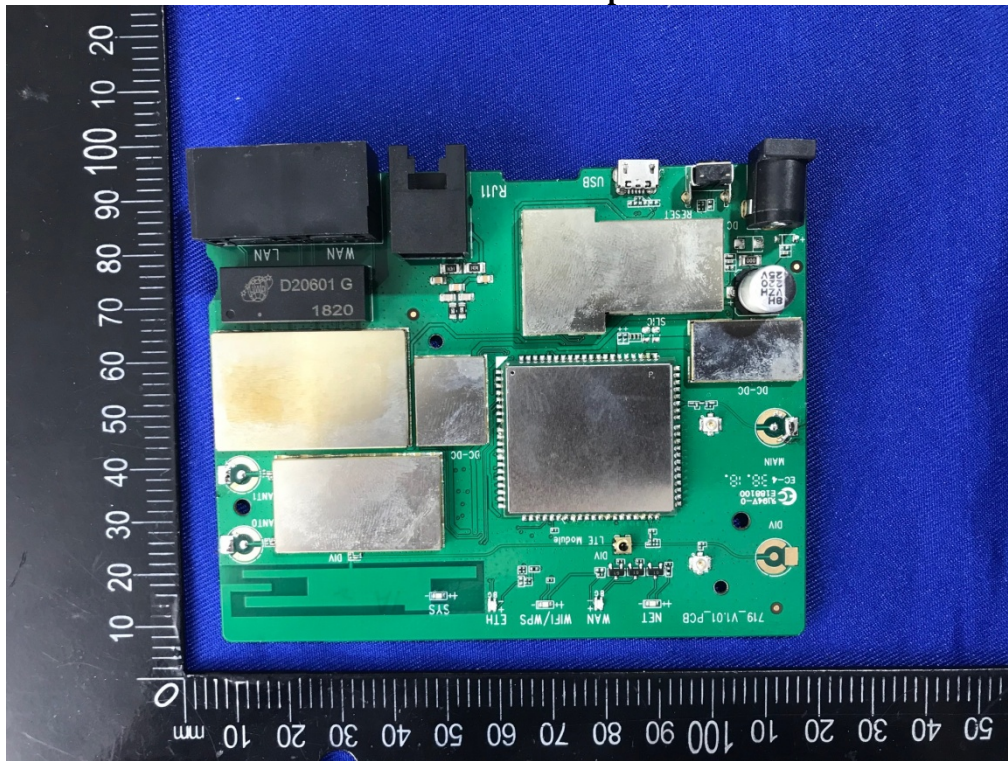
EUT – Uncover View



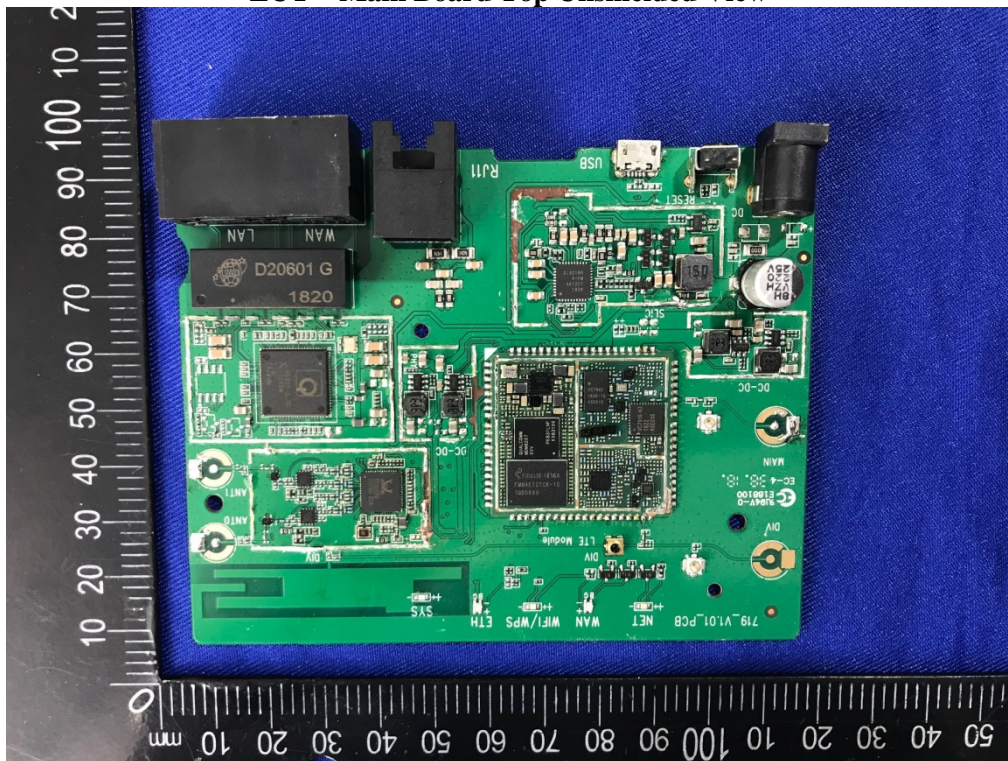
EUT – Uncover View



EUT – Main Board Top View



EUT – Main Board Top Unshielded View



The image shows the reverse side of a Raspberry Pi Zero PCB. Key components and labels visible include:

- Connectors:** A USB Type-C port (labeled USB_C0) and a micro-USB port (labeled USB_20).
- Power Regulation:** A 3.3V regulator (labeled 3.3V0) and a DC-DC converter (labeled DC-DC_12).
- Microcontroller:** A central integrated circuit (labeled BCM2835).
- Memory:** A 512KB eMMC chip (labeled 512KB).
- Other Components:** Various capacitors, resistors, and a reset button (labeled RESET_N).

A ruler is placed along the left edge of the board, indicating its dimensions in millimeters.

EUT – LTE Module Unshielded View

