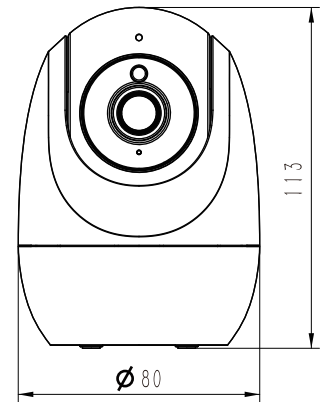


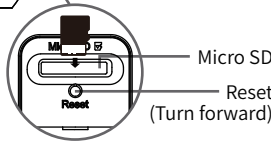
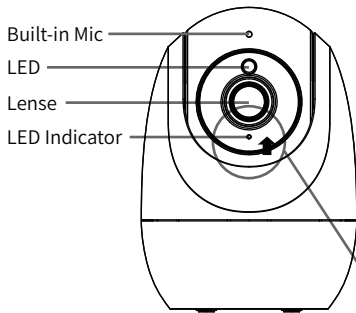
Camera Dimension



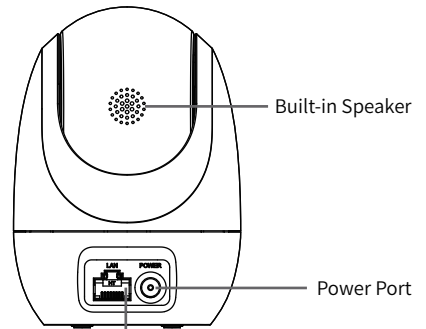
Unit:mm

2

Interface



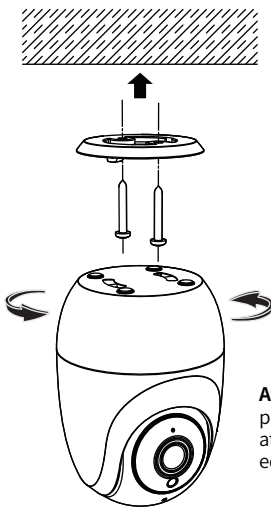
3



Indicator status	Explain
Light on	Camera not connected
Light flashing fast	Network connection error
Light flashing slowly	Network connection ok

4

Installation(top loaded)



Attention: Installed on the ceiling, please ensure the ceiling can bear at least four times the weight of equipment.

5

Quick operation

5.1 Equipment connection power supply
Connect the AC Adapter to the camera and to an electrical socket. When the indicator light in the blue light state and Speaker broadcast started successfully. It's means that the startup is completed and the network configuration is performed.

5.2 Download and install mobile APP
Scan the QR code below to download the APP and the client may search for "EasyLive plus" in the app store. Then complete according to the instructions.



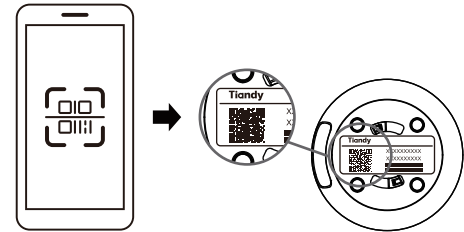
APP download QR code

5.3 Account registration and login
Open EasyLive Plus ,click the registration button in the account login interface, and enter the E-mail address and verify according to the prompts code to complete registration and login.

6

5.4 Quick configuration of camera connection WIFI
Connect your phone to Wi-Fi network, and open EasyLive Plus click "Add new device", select "WIFI camera", and scan the QR code of the device camera according to the prompts, as shown in the figure
There are two ways to add:

- (1) Wireless connection, the camera connects to the router through WiFi wireless network;
 - (2) Wired connection, the camera is connected to the router through the network cable;
- The two adding methods can be completed according to the mobile APP prompt.



Note: When selecting wireless connection and wired connection, the router needs to connect Internet, the camera is connected to the Internet after the addition is successful

7

Tiandy

Warning:
This device complies with part 15 of the FCC Rules.
Operation is subject to the following two conditions:
(1) This device may not cause harmful interference, and
(2) this device must accept any interference received, including interference that may cause undesired operation.

FCC Radiation Exposure Statement
This equipment complies with FCC radiation exposure limits set forth for uncontrolled environment. This equipment should be installed and operated with minimum distance of 20 cm between the radiator and your body.
This transmitter must not be co-located or operating in conjunction with any other antenna and transmitter.

Note:
This equipment has been tested and found to comply with the limits for a Class B digital device, pursuant to part 15 of the FCC Rules. These limits are designed to provide reasonable protection against harmful interference in a residential installation. This equipment generates, uses and can radiate radio frequency energy and, if not installed and used in accordance with the instructions, may cause harmful interference to radio communications. However, there is no guarantee that interference will not occur in a particular installation.

If this equipment does cause harmful interference to radio or television reception, which can be determined by turning the equipment off and on, the user is encouraged to try to correct the interference by one or more of the following measures:
- Reorient or relocate the receiving antenna.
- Increase the separation between the equipment and receiver.
- Connect the equipment into an outlet on a circuit different from that to which the receiver is connected.
- Consult the dealer or an experienced radio/TV technician for help.

Safety Instruction

These instructions are intended to ensure that user can use the product correctly to avoid danger and property loss. Please carefully read this guidance and keep it for future reference before operating the device.
The manual is designed to instruct users to facilitate installation. The interface in details depends on the exact product.
The latest version will be updated regularly according to the software and hardware improvement of our product.
Updated information will be updated in the latest version of this manual without prior notice.

The precaution measure is divided into “Warnings” and “Cautions”



Warnings

Follow these safeguards to prevent serious injury or death.
⊠. Input voltage should meet both the SELV (Safety Extra Low Voltage)
⊠. Contact the distributor for abnormal operation. Do Not disassemble or modify the devices in any way.
⊠. Moisture must be avoided for indoor devices in case of fire and electric shock.
⊠. Install the equipment on the ceiling to ensure that it can withstand at least 10 times the weight of the equipment.
⊠. Moisture must be avoided for indoor devices in case of fire and electric shock.



Cautions

Follow these precautions to prevent potential injury or material damage.
⊠.Original package must be used for shipment and management to avoid high pressure, high vibration and imprisonments
⊠.Avoid direct contact with image sensor. Cover the dust cap while not operating.
⊠.Do not aim the camera at the extra bright places (light, sunlight, laser) in case of affecting the endurance of CMOS at the same time.
⊠.Do not place the camera in extremely hot, cold, dusty or damp locations, and do not expose it to high electromagnetism radiation.
⊠.To avoid heat accumulation, good ventilation is required for operating environment.
⊠. Ensure that the installation location is kept at a sufficient distance from the surrounding electromagnetic sensitive equipment to prevent electromagnetic interference.
⊠.Keep the camera away from liquid while on using.
Original package during shipment is strongly recommended.
⊠.Any replacement of the device battery or the use of a mismatched type may cause irreversible damage to the device.
⊠. Modify the default login password when first login the device to avoid the loss caused by weak password.
⊠⊠.When the Micro SD is used, it is recommended to use a special video surveillance Micro SD card to avoid after sales maintenance arising from the rapid damage of ordinary Micro SD cards.



Disclaimer

⊠. The company has tried its best to ensure the completeness and accuracy of the contents contained in the Manual. For any doubt or dispute, please refer to the company’s final explanation.
⊠. The company will keep the contents contained in this Manual up-to-date in accordance with product enhancements and will periodically improve or update the products or procedures described in this Manual. The updated contents will be reflected in the latest version of this Manual without prior notice.
⊠. The contents contained in this Manual are for reference and guidance only for users. It is not guaranteed to be exactly the same with the real product. The real product shall prevail.
⊠. The parts, components and accessories mentioned in this Manual are for illustration purposes only and do not represent the configurations of your purchased model.



Warnings

Caution: Risk of explosion if the battery is replaced by an incorrect type
• replacement of a battery with an incorrect type that can defeat a safeguard (for example, in the case of some lithium battery types);
• disposal of a battery into fire or a hot oven, or mechanically crushing or cutting of a battery, that can result in an explosion;
* leaving a battery in an extremely high temperature surrounding environment that can result in an explosion or the leakage of flammable liquid or gas;
- a battery subjected to extremely low air pressure that may result in an explosion or the leakage of flammable liquid or gas



Warranty Card	
Thank you for choosing our products. This warranty card is our company’s solemn commitment to you, and based on this, the company provides you with standard warranty services. It is strongly recommended that you read the instructions carefully before using the product and operate it correctly.	
Warranty Policy	
The warranty applies with the warranty card supplied.	
After-sales Service Policy	
This warranty is applicable to the product from the date of purchase, but the official original purchase certificate shall be provided. If the official original purchase certificate cannot be provided or the record (date, commodity name) is not clear, the company will define the warranty period based on the product information.	
• According to the national regulations, users enjoy the warranty services for the quality problems within the warranty period. • The followings shall not be covered by the warranty: • Exceeding warranty • Physical damage due to improper use or storage • Failure or damage caused during transport, loading/unloading or handling • Repair or modification by non-professionals • Failure or damage caused by negligence, violation of operation rules or misoperation • Failure or damage caused by force majeure factors (Fire, earthquake, lightning strike) • No warranty over accessories such as fuse and battery • Products not maintained by the company	<div>Certificate</div> <div>CHECKER: </div>
⊠⊠⊠ high-quality service The company reserves the right of final evaluation of product failure	



Tiandy

Network Video Camera Series

Quick Start Guide



ISO 9001:2008
ISO 14001:2004
1H.30010.020042