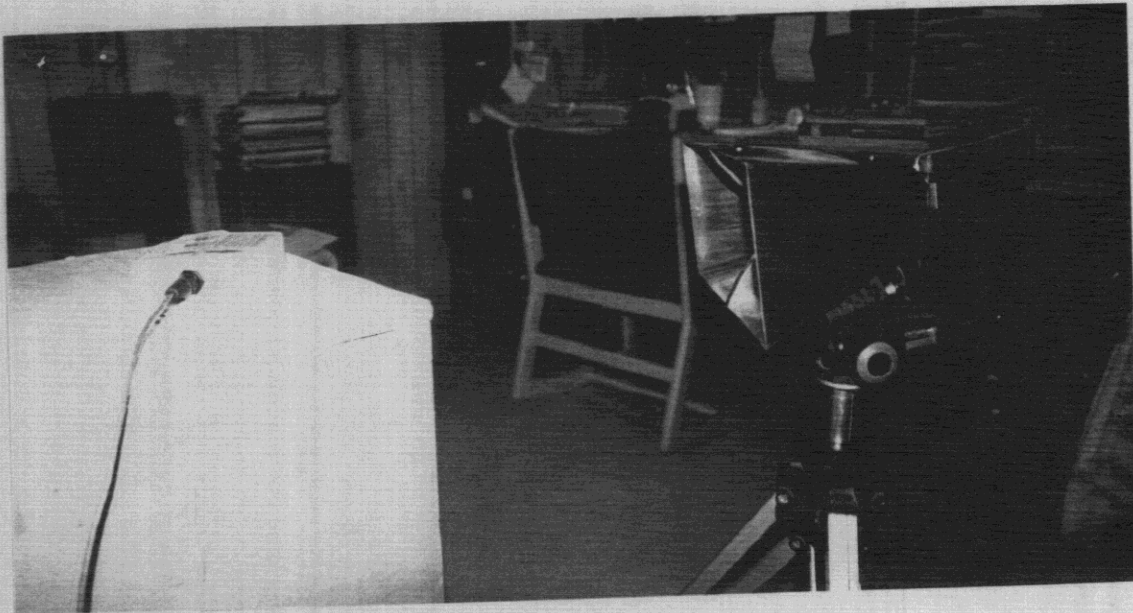


APPENDIX A

Facilities Photos - Hart Microwave



Kerr Design Horn. Spurious Emissions Check.
1.0 GHz to 12.4 GHz. 18" Range

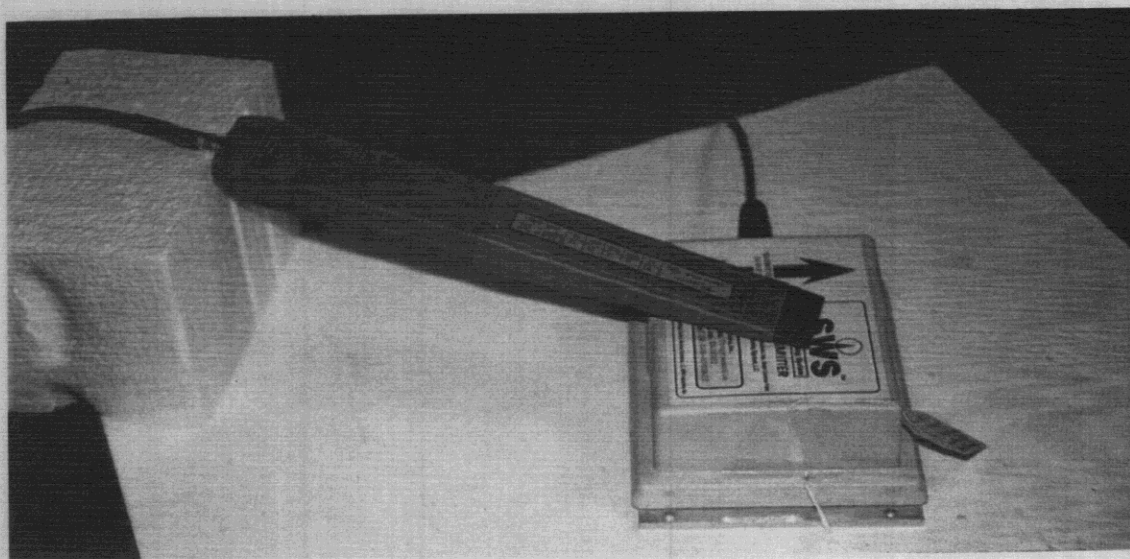
Fig. A-1

APPENDIX A



Spurious Emission Tests. 4.7 MHz to 1000 MHz.
Close Field Probe

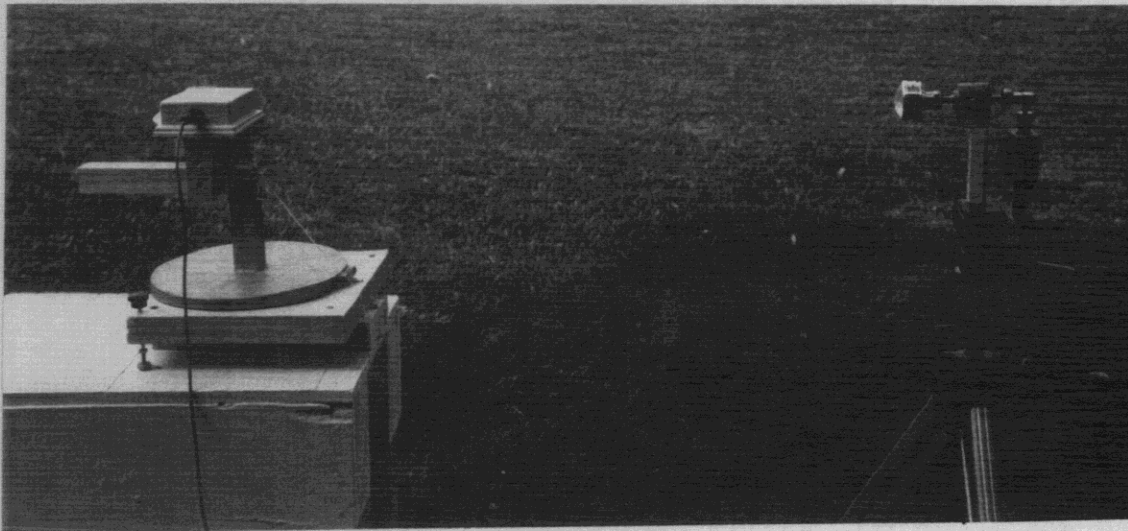
Fig. A-2



Closeup of Close Field Sniffer Probe

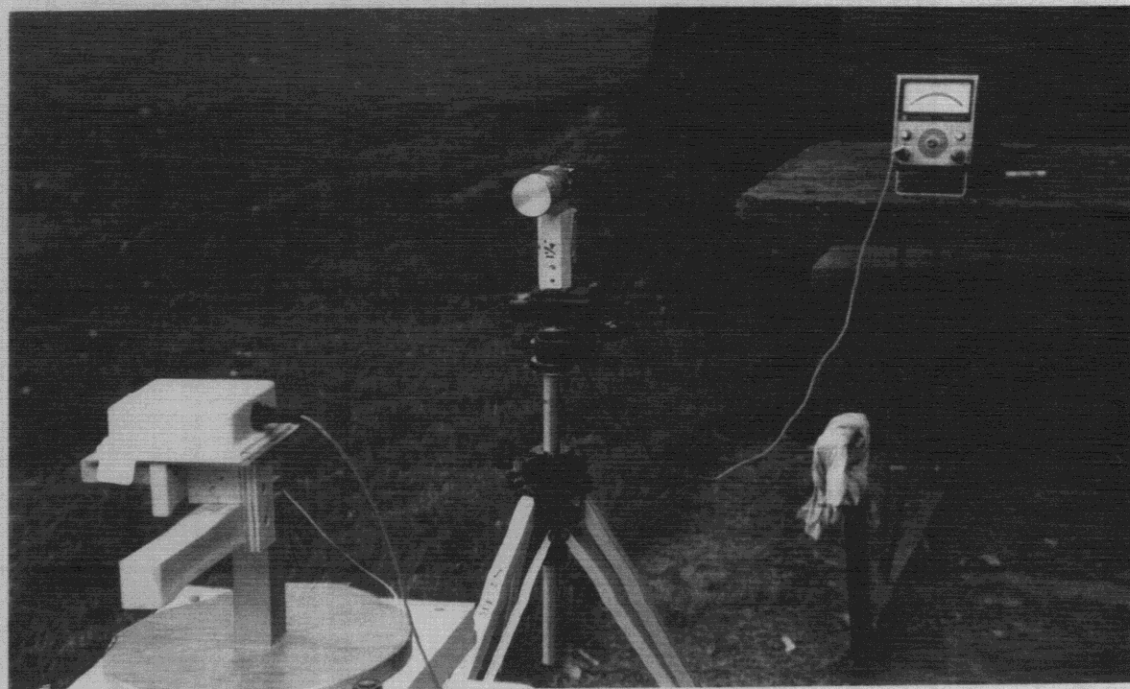
Fig. A-3

APPENDIX A



36" Range for Measuring:
3 dB Beamwidth
Antenna Gain

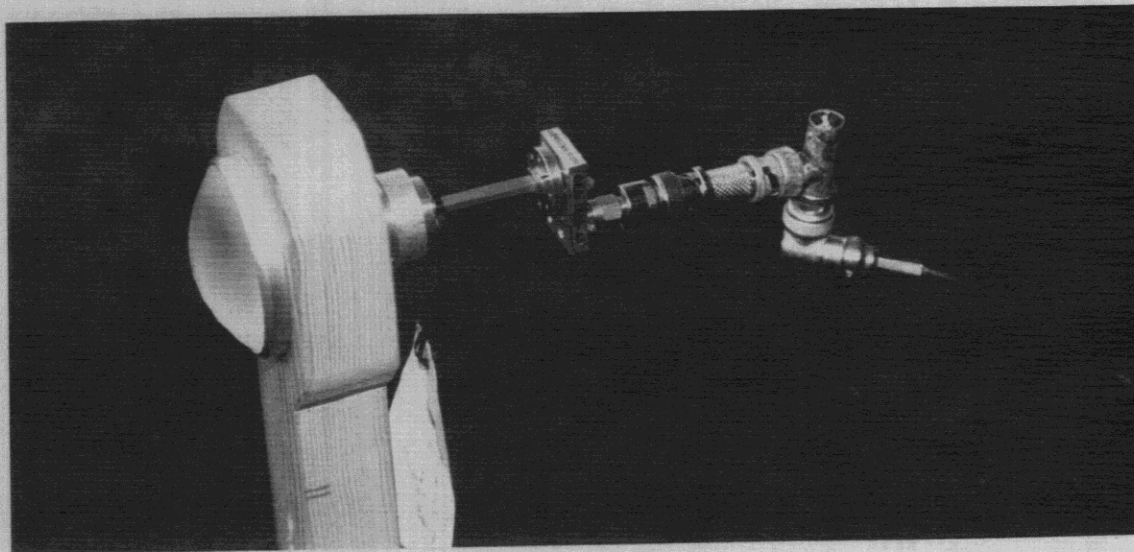
Fig. A-4



Another View of 36" Range for Measuring
3 dB Beamwidth and Antenna Gain

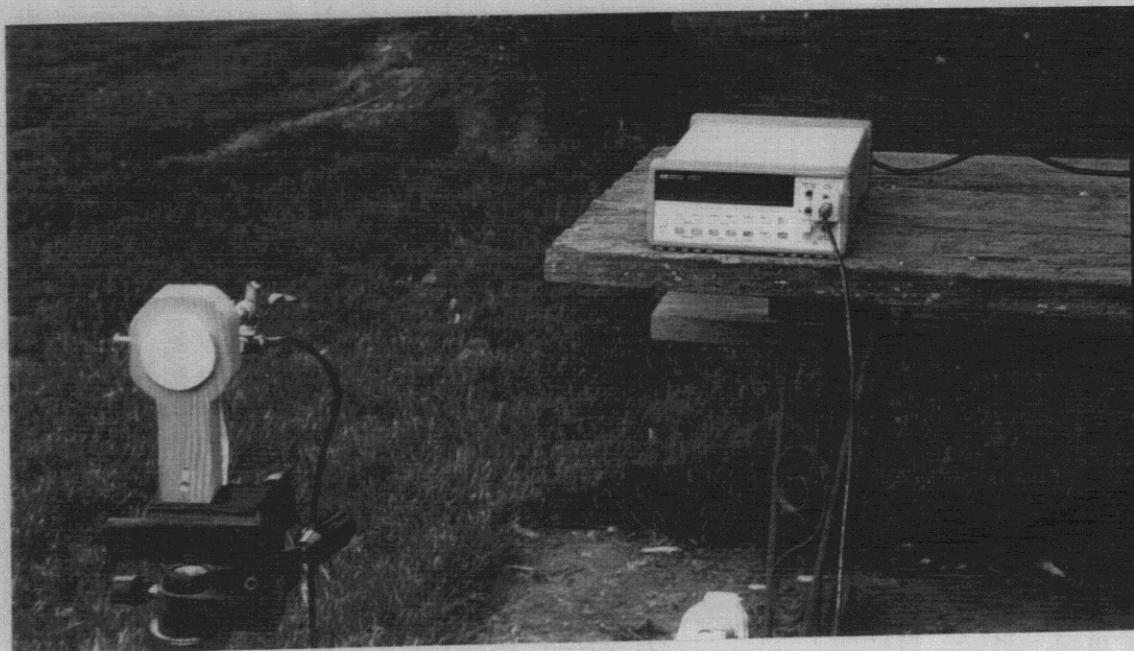
Fig. A-5

APPENDIX A



Typical Receiver Pickup for Measuring
Harmonics and Spurious Emissions
From 40 GHz to 100 GHz. Range = 36"

Fig. A-6



Another View of Receiver Pickup for Measuring
Harmonics and Spurious Emissions
From 40 GHz to 100 GHz

Fig. A-7