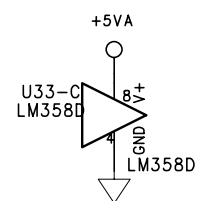
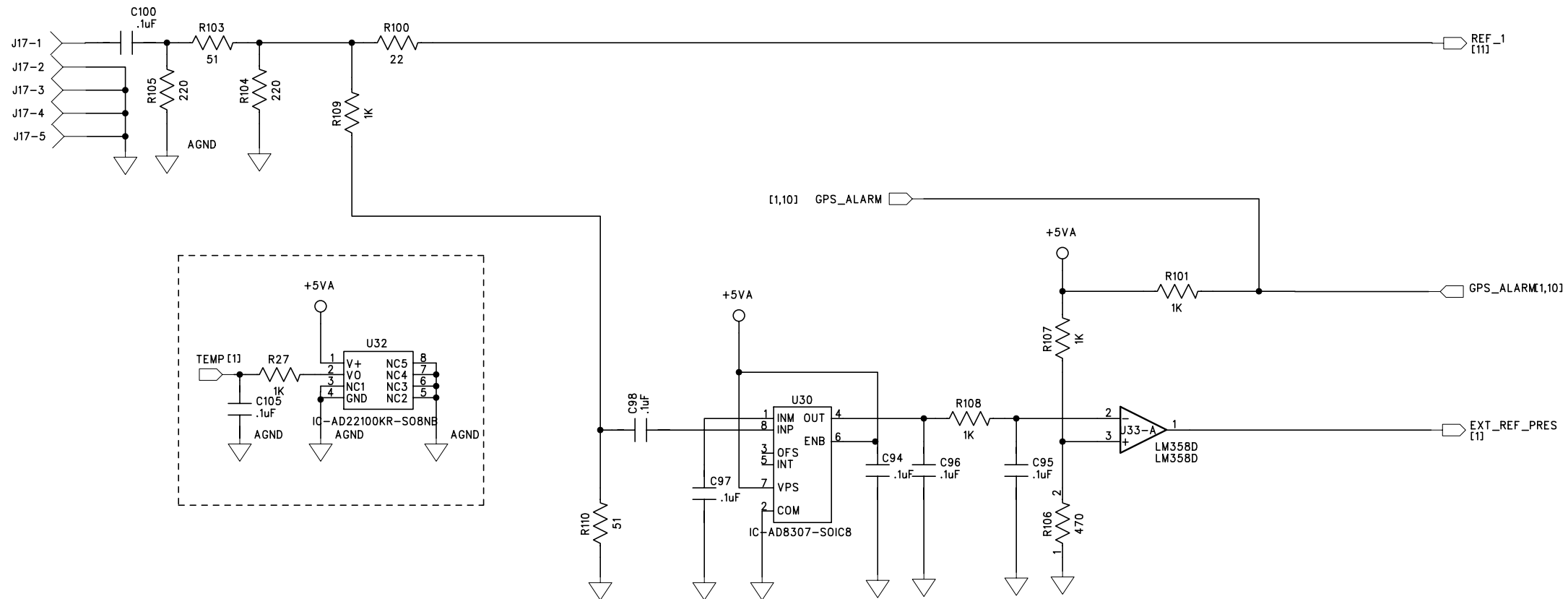


THIS DOCUMENT AND THE INFORMATION IN IT IS THE PROPERTY OF THOMCAST COMMUNICATIONS, INC. ("THOMCAST"). THIS DOCUMENT AND INFORMATION SHALL NOT BE REPRODUCED OR DISCLOSED TO ANY PERSON OR ENTITY WITHOUT PRIOR WRITTEN CONSENT FROM THOMCAST. CE DOCUMENT ET LES INFORMATIONS QUIIL CONTIENT SONT LA PROPRIETE DE THOMCAST COMMUNICATIONS, INC. ("THOMCAST"). ILS NE PEUVENT ETRE REPRODUITS NI COMMUNIQUE A DES SANS L'AUTORISATION PREALABLE ECRITE DE THOMCAST.

THIS DOCUMENT HAS BEEN PRODUCED ON: PADS POWER LOGIC CAD SYSTEM. HANDWRITTEN CHANGE FORBIDDEN.

© THALES BROADCAST & MULTIMEDIA, 2001

GPS INPUT

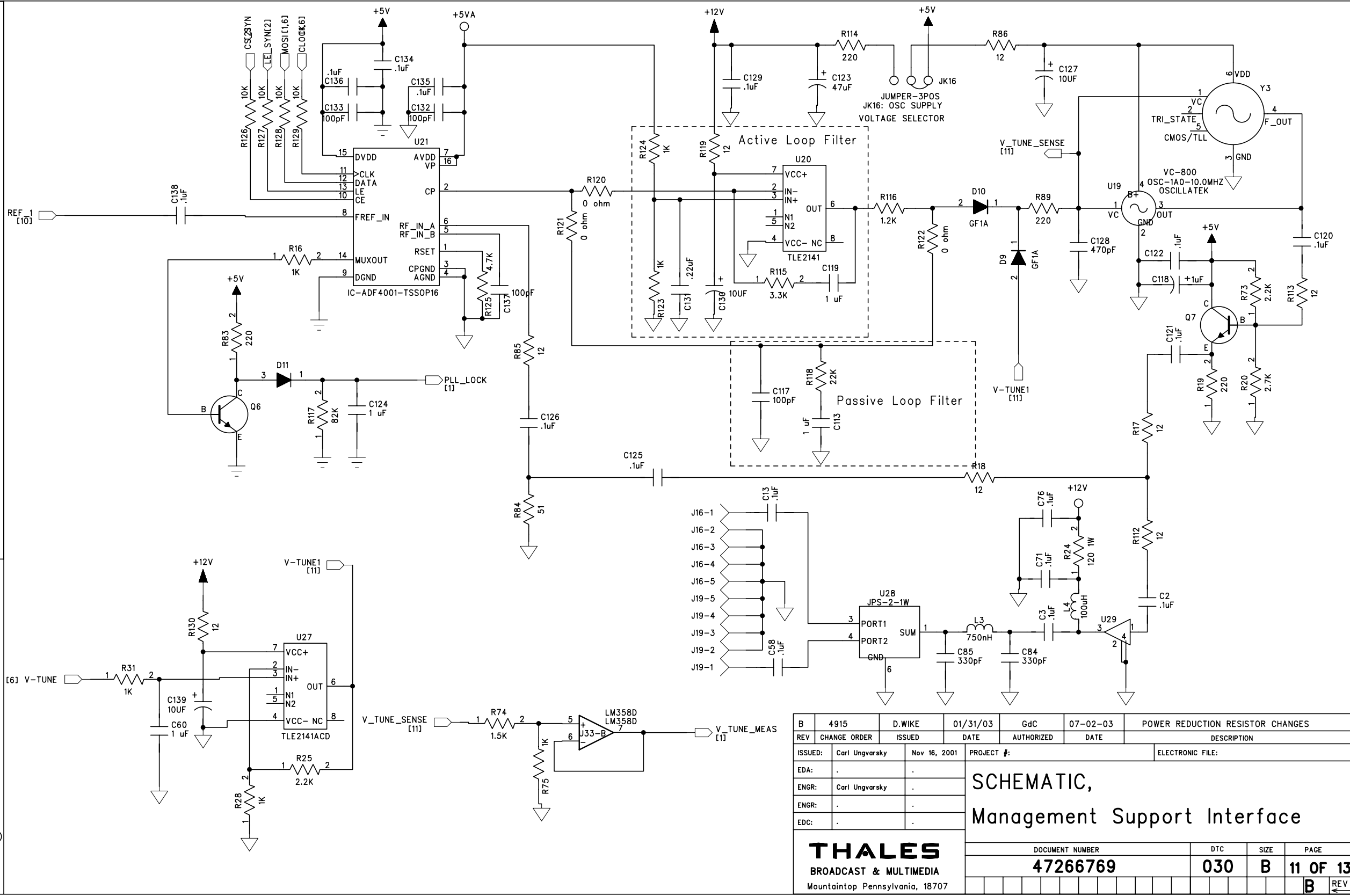


B	4915	D.WIKE	01/31/03	GdC	07-02-03	POWER REDUCTION RESISTOR CHANGES																
REV	CHANGE ORDER	ISSUED	DATE	AUTHORIZED	DATE	DESCRIPTION																
ISSUED:	Carl Ungvarsky		Nov 16, 2001		PROJECT #:							ELECTRONIC FILE:										
EDA:	.		.		SCHEMATIC, Management Support Interface																	
ENGR:	Carl Ungvarsky		.																			
ENGR:	.		.																			
EDC:	.		.																			
<div>THALES</div> <div>BROADCAST & MULTIMEDIA</div> <div>Mountaintop Pennsylvania, 18707</div>					DOCUMENT NUMBER							DTC			SIZE		PAGE					
					47266769							030			B 10		OF 13					
																					B	REV

THIS DOCUMENT AND THE INFORMATION IN IT IS THE PROPERTY OF THALES BROADCAST & MULTIMEDIA ("THALES"). THIS DOCUMENT AND INFORMATION SHALL NOT BE REPRODUCED OR DISCLOSED TO ANY PERSON OR ENTITY WITHOUT PRIOR WRITTEN CONSENT FROM THOMCAST. CE DOCUMENT ET LES INFORMATIONS QU'IL CONTIENT SONT LA PROPRIETE DE THALES BROADCAST & MULTIMEDIA ("THALES"). ILS NE PEUVENT ETRE REPRODUITS NI COMMUNIQUEES A DES SANS L'AUTORISATION PREALABLE ECRITE DE THOMCAST.

THIS DOCUMENT HAS BEEN PRODUCED ON: PADS POWER LOGIC CAD SYSTEM. HANDWRITTEN CHANGE FORBIDDEN.

© THALES BROADCAST & MULTIMEDIA, 2001



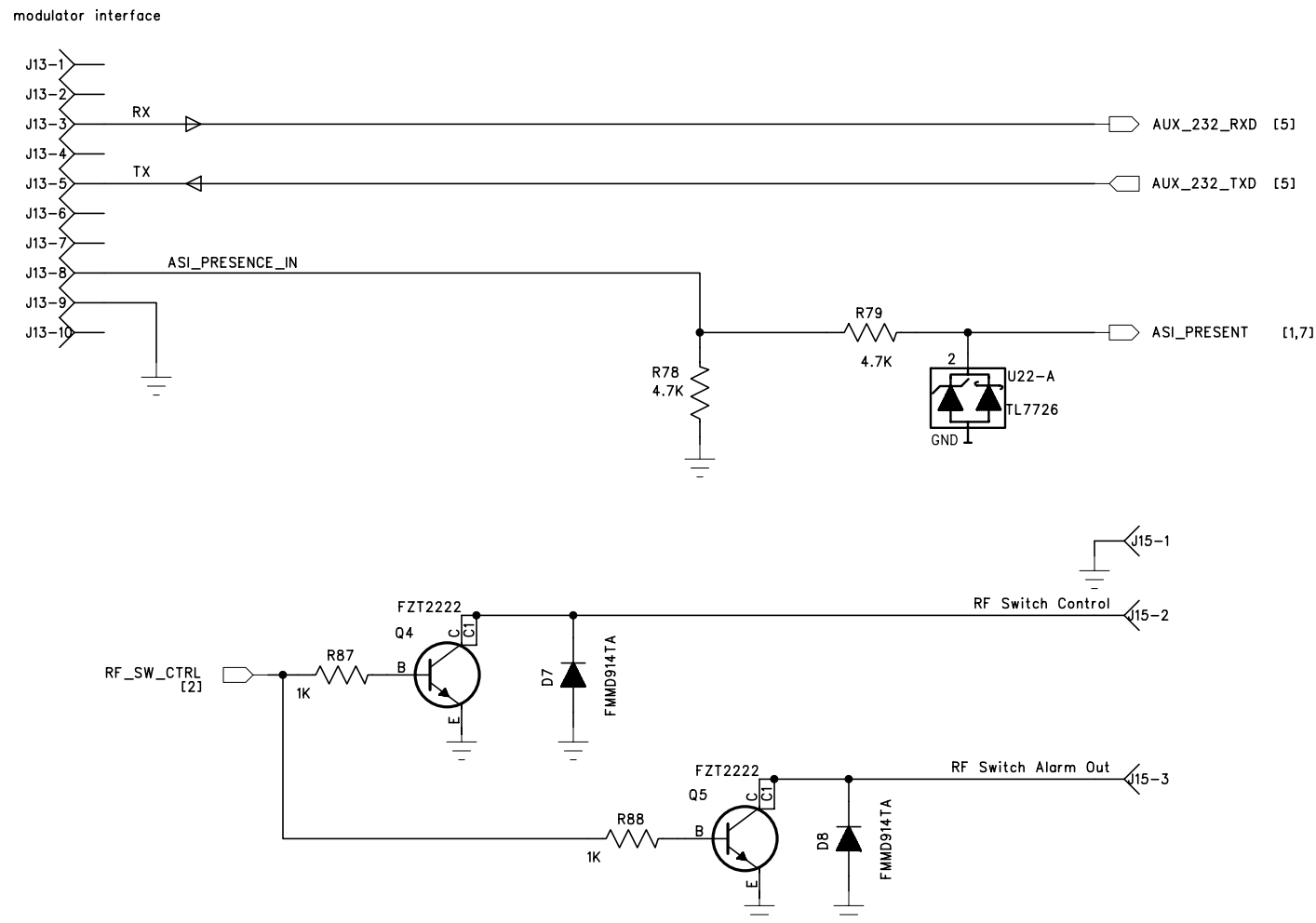
B	4915	D.WIKE	01/31/03	GdC	07-02-03	POWER REDUCTION RESISTOR CHANGES													
REV	CHANGE ORDER	ISSUED	DATE	AUTHORIZED	DATE	DESCRIPTION													
ISSUED:		Carl Ungvarsky	Nov 16, 2001	PROJECT #:							ELECTRONIC FILE:								
EDA:		-	-	SCHEMATIC, Management Support Interface															
ENGR:		Carl Ungvarsky	-																
ENGR:		-	-																
EDC:		-	-																
<div>THALES</div> <div>BROADCAST & MULTIMEDIA</div> <div>Mountaintop Pennsylvania, 18707</div>				DOCUMENT NUMBER							DTC			SIZE		PAGE			
				47266769							030			B		11 OF 13			
																	B	REV	

B	4915	D.WIKE		01/31/03	GdC	07-02-03	POWER REDUCTION RESISTOR CHANGES																																																																																																																																																																																																																																																																																																																																																																																																																																																																																																																																																																																																																																																																																																																																																																																																																																																																																																																																																																																																																																																																																																																																																																																																																																																																		
REV	CHANGE ORDER	ISSUED		DATE	AUTHORIZED		DATE	DESCRIPTION																																																																																																																																																																																																																																																																																																																																																																																																																																																																																																																																																																																																																																																																																																																																																																																																																																																																																																																																																																																																																																																																																																																																																																																																																																																																	
ISSUED:		Carl Ungvarsky		Nov 16, 2001		PROJECT #:					ELECTRONIC FILE:																																																																																																																																																																																																																																																																																																																																																																																																																																																																																																																																																																																																																																																																																																																																																																																																																																																																																																																																																																																																																																																																																																																																																																																																																																																														
EDA:		-		-		SCHEMATIC, Management Support Interface																																																																																																																																																																																																																																																																																																																																																																																																																																																																																																																																																																																																																																																																																																																																																																																																																																																																																																																																																																																																																																																																																																																																																																																																																																																																			
ENGR:		Carl Ungvarsky		-																																																																																																																																																																																																																																																																																																																																																																																																																																																																																																																																																																																																																																																																																																																																																																																																																																																																																																																																																																																																																																																																																																																																																																																																																																																																					
ENGR:		-		-																																																																																																																																																																																																																																																																																																																																																																																																																																																																																																																																																																																																																																																																																																																																																																																																																																																																																																																																																																																																																																																																																																																																																																																																																																																																					
EDC:		-		-																																																																																																																																																																																																																																																																																																																																																																																																																																																																																																																																																																																																																																																																																																																																																																																																																																																																																																																																																																																																																																																																																																																																																																																																																																																																					
<div>THALES</div> <div>BROADCAST & MULTIMEDIA</div> <div>Mountaintop Pennsylvania, 18707</div>												DOCUMENT NUMBER					DTC		SIZE		PAGE																																																																																																																																																																																																																																																																																																																																																																																																																																																																																																																																																																																																																																																																																																																																																																																																																																																																																																																																																																																																																																																																																																																																																																																																																																																				
												47266769					030		B		12 OF 13																																																																																																																																																																																																																																																																																																																																																																																																																																																																																																																																																																																																																																																																																																																																																																																																																																																																																																																																																																																																																																																																																																																																																																																																																																																				

THIS DOCUMENT AND THE INFORMATION IN IT IS THE PROPERTY OF THOMCAST COMMUNICATIONS, INC. ("THOMCAST"). THIS DOCUMENT AND INFORMATION SHALL NOT BE REPRODUCED OR DISCLOSED TO ANY PERSON OR ENTITY WITHOUT PRIOR WRITTEN CONSENT FROM THOMCAST. CE DOCUMENT ET LES INFORMATIONS QU'IL CONTIENT SONT LA PROPRIETE DE THOMCAST COMMUNICATIONS, INC. ("THOMCAST"). ILS NE PEUVENT ETRE REPRODUITS NI COMMUNIQUE A DES SANS L'AUTORISATION PREALABLE ECHITE DE THOMCAST.

THIS DOCUMENT HAS BEEN PRODUCED ON: PADS POWER LOGIC CAD SYSTEM. HANDWRITTEN CHANGE FORBIDDEN.

© THALES BROADCAST & MULTIMEDIA, 2001



B	4915	D.WIKE	01/31/03	GdC	07-02-03	POWER REDUCTION RESISTOR CHANGES												
REV	CHANGE ORDER		ISSUED	DATE	AUTHORIZED	DATE	DESCRIPTION											
ISSUED:	Carl Ungvarsky		Nov 16, 2001	PROJECT #:						ELECTRONIC FILE:								
EDA:	.		.	SCHEMATIC, Management Support Interface														
ENGR:	Carl Ungvarsky		.															
ENGR:	.		.															
EDC:	.		.															
<div>THALES</div> <div>BROADCAST & MULTIMEDIA</div> <div>Mountaintop Pennsylvania, 18707</div>				DOCUMENT NUMBER						DTC		SIZE		PAGE				
				47266769						030		B 13		OF 13				
																	B	REV

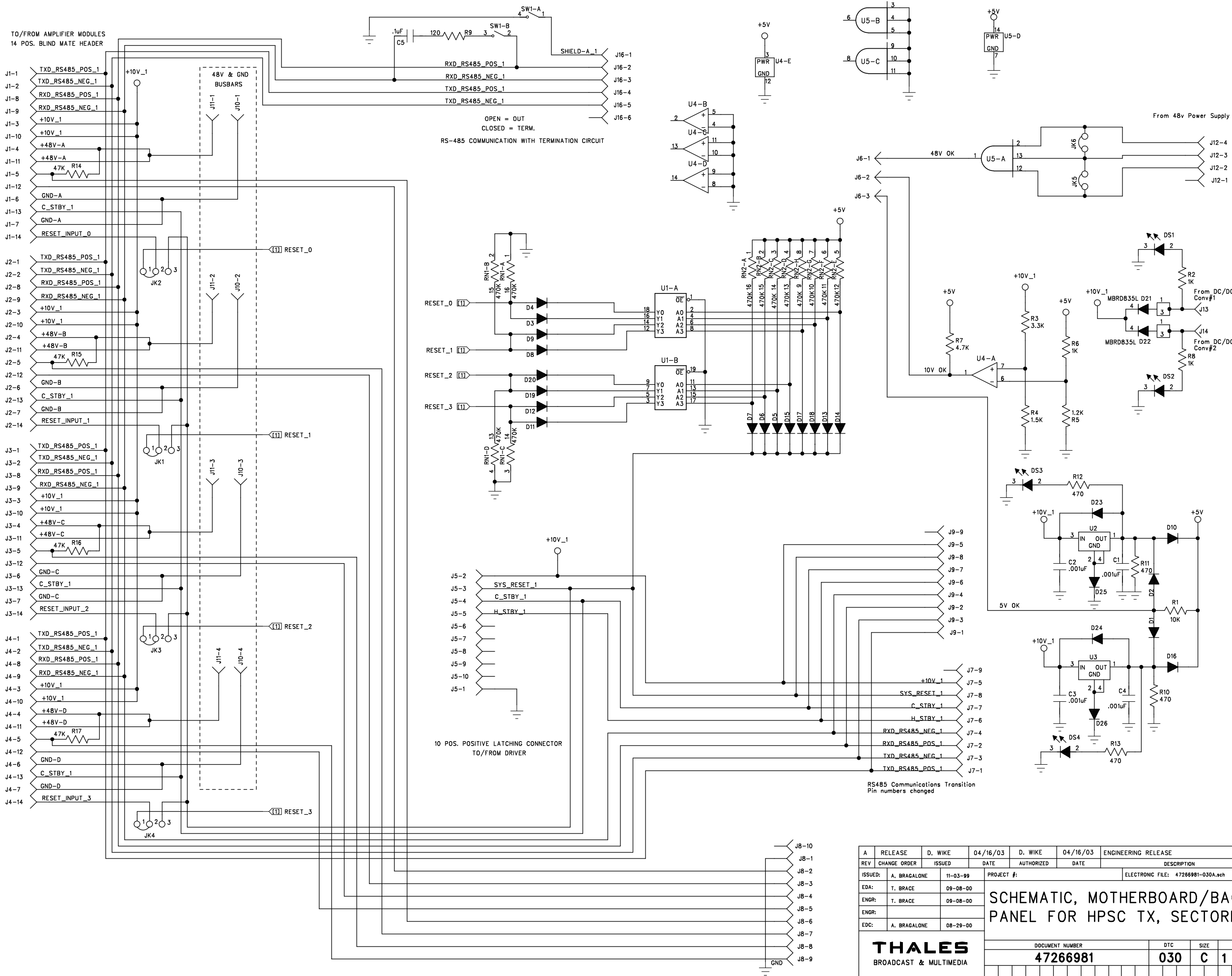


1

THIS DOCUMENT AND THE INFORMATION IN IT IS THE PROPERTY OF THOMCAST COMMUNICATIONS, INC. ("THOMCAST"). THIS DOCUMENT AND INFORMATION SHALL NOT BE REPRODUCED OR DISCLOSED TO ANY PERSON OR ENTITY WITHOUT PRIOR WRITTEN CONSENT FROM THOMCAST. CE DOCUMENT ET LES INFORMATIONS QUI LE CONTIENNENT SONT LA PROPRIETE DE THOMCAST COMMUNICATIONS, INC. ("THOMCAST"). ILS NE PEUVENT ETRE REPRODUITS NI COMMUNIQUEES A DES SAIS L'AUTORISATION PREALABLE ECRIE DE THOMCAST.

THIS DOCUMENT HAS BEEN PRODUCED ON: PADS POWER LOGIC
CAD SYSTEM. HANDWRITTEN CHANGE FORBIDDEN.

© THALES BROADCAST & MULTIMEDIA, 2003



D

C

A

B

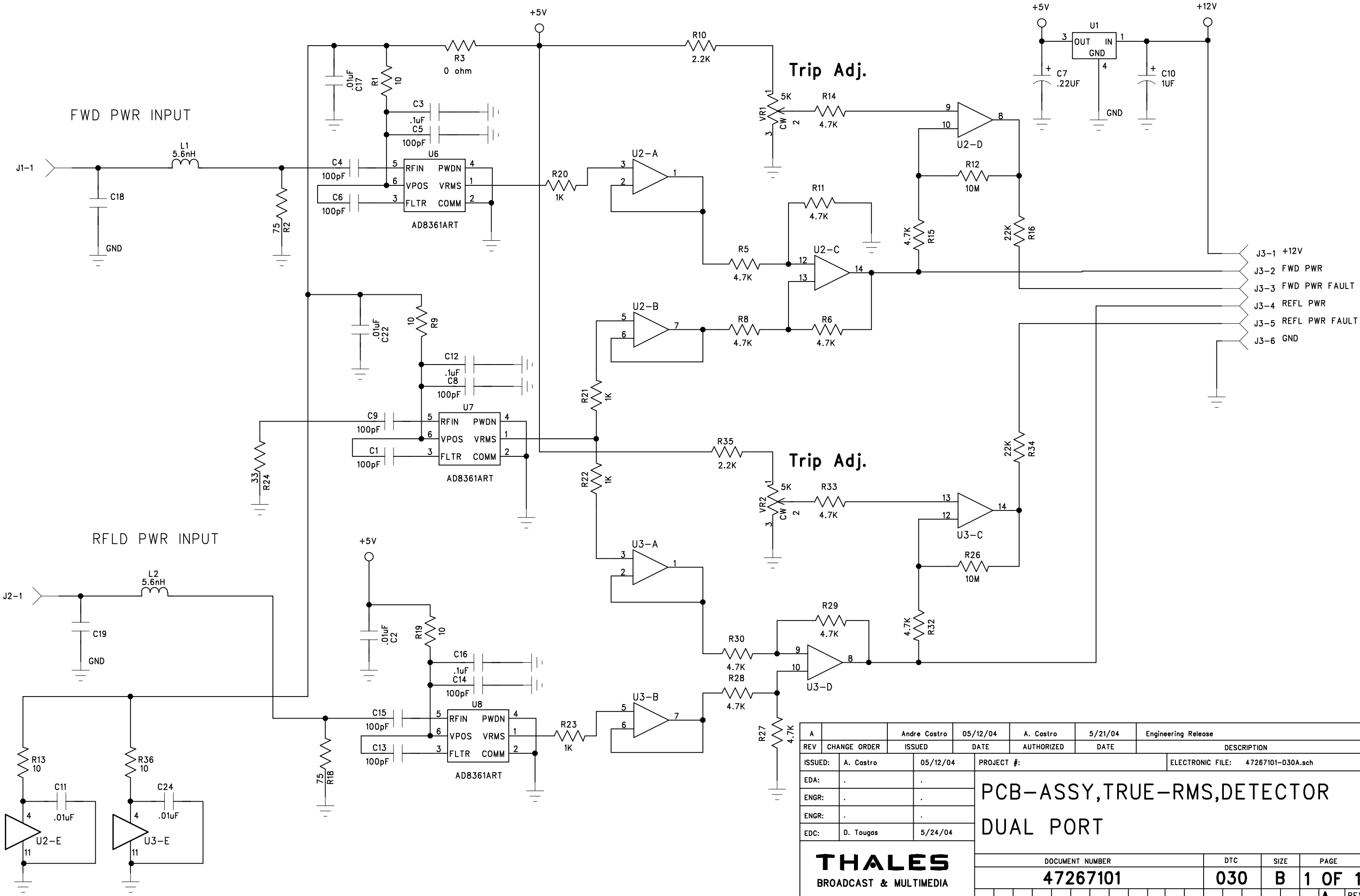
A

A	RELEASE	D. WIKE	04/16/03	D. WIKE	04/16/03	ENGINEERING RELEASE				
REV	CHANGE ORDER	ISSUED	DATE	AUTHORIZED	DATE	DESCRIPTION				
ISSUED:	A. BRAGALONE	11-03-99	PROJECT #:		ELECTRONIC FILE: 47266981-030A.sch					
EDA:	T. BRACE	09-08-00	SCHEMATIC, MOTHERBOARD/BACK PANEL FOR HPSC TX, SECTORIZED							
ENGR:	T. BRACE	09-08-00								
ENGR:										
EDC:	A. BRAGALONE	08-29-00								
THALES BROADCAST & MULTIMEDIA			DOCUMENT NUMBER			DTC	SIZE	PAGE		
			47266981			030	C	1 OF 1		
										A

THIS DOCUMENT AND THE INFORMATION IN IT IS THE PROPERTY OF THALES BROADCAST & MULTIMEDIA ("THALES"). THIS DOCUMENT AND INFORMATION SHALL NOT BE REPRODUCED OR DISCLOSED TO ANY PERSON OR ENTITY WITHOUT PRIOR WRITTEN CONSENT FROM THALES. CE DOCUMENT ET LES INFORMATIONS QU'IL CONTIENT SONT LA PROPRIÉTÉ DE THALES BROADCAST & MULTIMÉDIA ("THALES"). ILS NE PEUVENT ÊTRE REPRODUITS NI COMMUNIQUÉS À DES SANS L'AUTORISATION PREALABLE ECRITE DE THALES.

THIS DOCUMENT HAS BEEN PRODUCED ON: PADS POWER LOGIC CAD SYSTEM. HANDWRITTEN CHANGE FORBIDDEN.

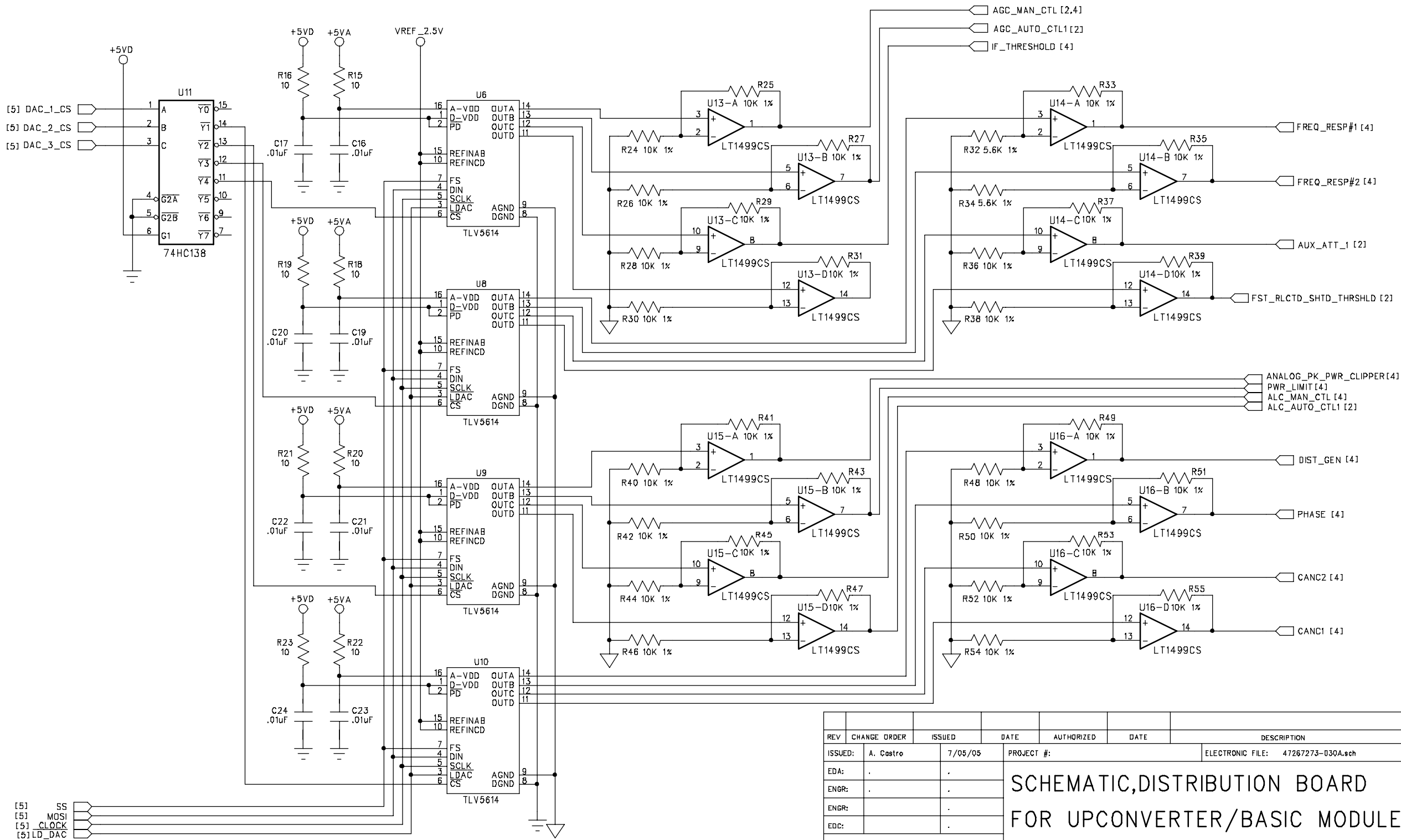
© THALES BROADCAST & MULTIMEDIA, 2004



THIS DOCUMENT AND THE INFORMATION IN IT IS THE PROPERTY OF THALES BROADCAST & MULTIMEDIA ("THALES"). THIS DOCUMENT AND INFORMATION SHALL NOT BE REPRODUCED OR DISCLOSED TO ANY PERSON OR ENTITY WITHOUT PRIOR WRITTEN CONSENT FROM THALES. DE DOCUMENT ET LES INFORMATIONS D'IL CONTIENT SONT LA PROPRIETE DE THALES BROADCAST & MULTIMEDIA ("THALES"). ILS NE PEUVENT ETRE REPRODUITS NI COMMUNIQUE A DES SANS L'AUTORISATION PREALABLE ECRIE DE THALES.

THIS DOCUMENT HAS BEEN PRODUCED ON: PADS POWER LOGIC
CAD SYSTEM. HANDWRITTEN CHANGE FORBIDDEN.

© THALES BROADCAST & MULTIMEDIA, 2005

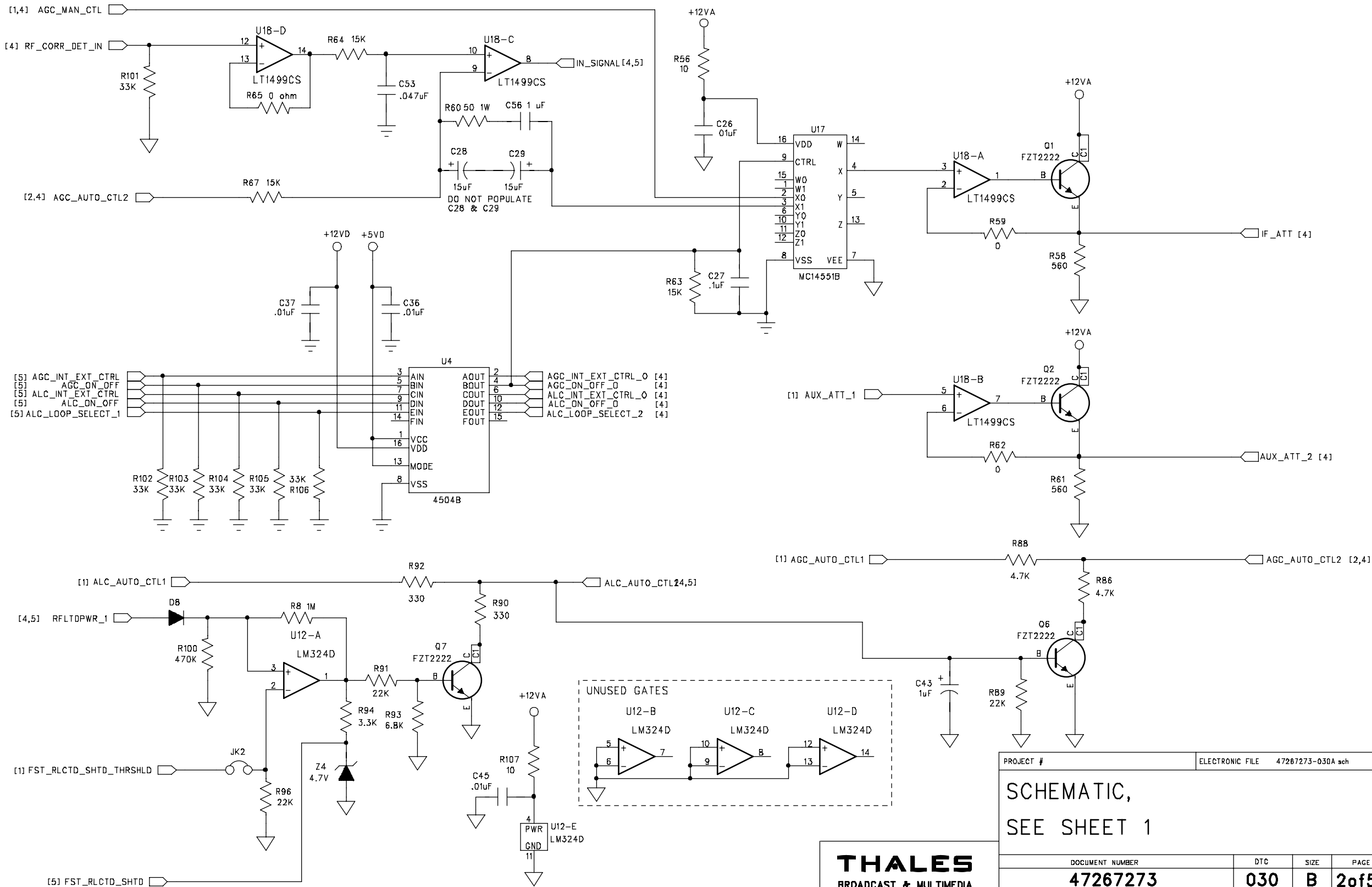


REV	CHANGE ORDER	ISSUED	DATE	AUTHORIZED	DATE	DESCRIPTION				
ISSUED:	A. Castro	7/05/05	PROJECT #:			ELECTRONIC FILE: 47267273-030A.sch				
EDA:	.	.	SCHEMATIC,DISTRIBUTION BOARD FOR UPCONVERTER/BASIC MODULE							
ENGR:	.	.								
ENGR:		.								
EDC:		.								
<div>THALES</div> <div>BROADCAST & MULTIMEDIA</div>			DOCUMENT NUMBER			DTC	SIZE	PAGE		
			47267273			030	B	1 OF 5		

THIS DOCUMENT AND THE INFORMATION IN IT IS THE PROPERTY OF THALES BROADCAST & MULTIMEDIA ("THALES"). THIS DOCUMENT AND INFORMATION SHALL NOT BE REPRODUCED OR DISCLOSED TO ANY PERSON OR ENTITY WITHOUT PRIOR WRITTEN CONSENT FROM THALES. CE DOCUMENT ET LES INFORMATIONS QU'IL CONTIENT SONT LA PROPRIÉTÉ DE THALES BROADCAST & MULTIMEDIA ("THALES"). ILS NE PEUVENT ÊTRE REPRODUITS NI COMMUNIQUÉS À DES SANS L'AUTORISATION PRÉALABLE ÉCRITE DE THALES.

THIS DOCUMENT HAS BEEN PRODUCED ON: PADS POWER LOGIC
CAD SYSTEM. HANDWRITTEN CHANGE FORBIDDEN.

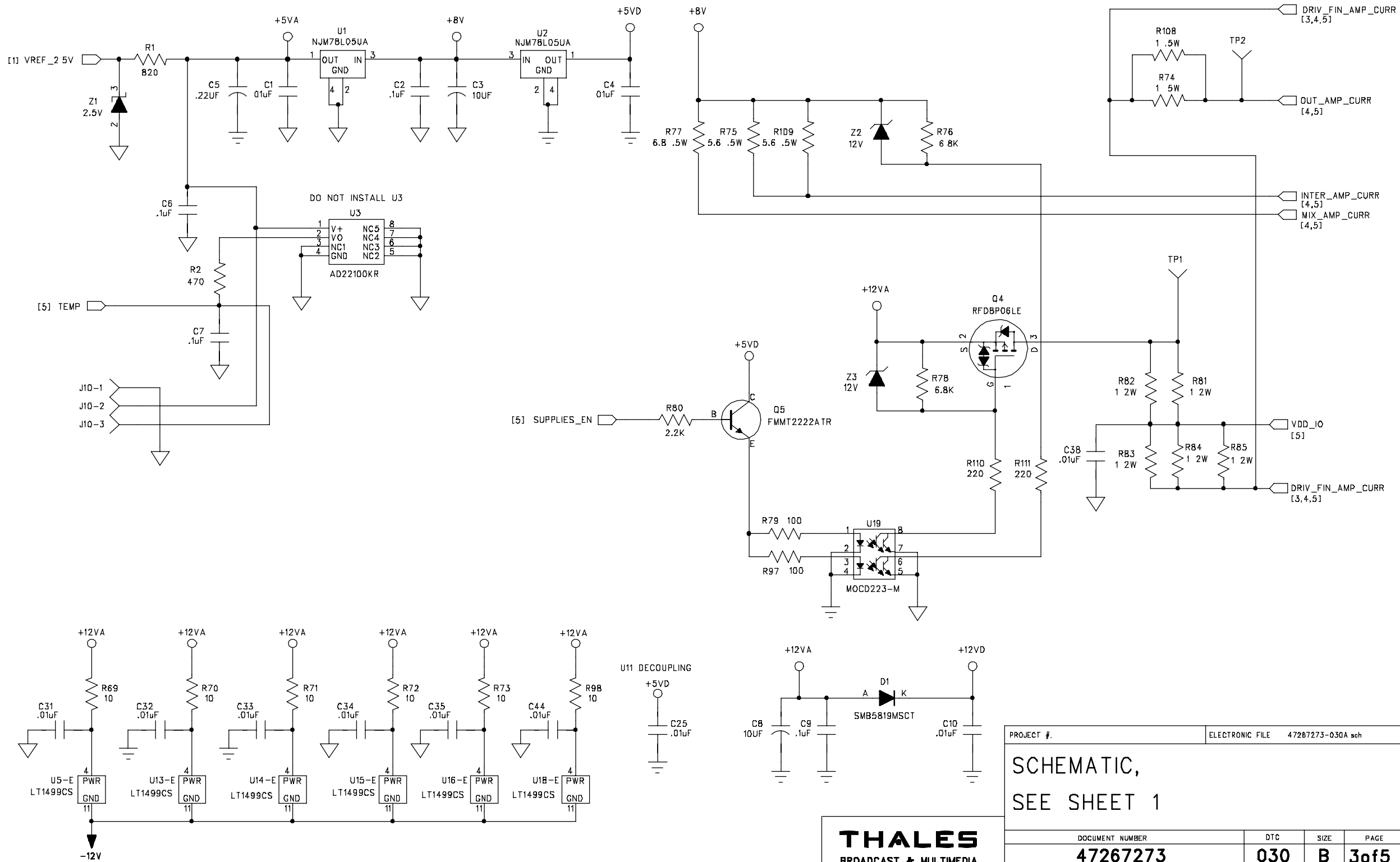
© THALES BROADCAST & MULTIMEDIA, 2005



THIS DOCUMENT AND THE INFORMATION IN IT IS THE PROPERTY OF THALES BROADCAST & MULTIMEDIA ("THALES"). THIS DOCUMENT AND INFORMATION SHALL NOT BE REPRODUCED OR DISCLOSED TO ANY PERSON OR ENTITY WITHOUT PRIOR WRITTEN CONSENT FROM THALES. CE DOCUMENT ET LES INFORMATIONS QU'IL CONTIENT SONT LA PROPRIÉTÉ DE THALES BROADCAST & MULTIMEDIA ("THALES"). ILS NE PEUVENT ÊTRE REPRODUITS NI COMMUNIQUÉS À DES SANS L'AUTORISATION PRÉALABLE ÉCRITE DE THALES.

THIS DOCUMENT HAS BEEN PRODUCED ON: PADS POWER LOGIC
CAD SYSTEM. HANDWRITTEN CHANGE FORBIDDEN.

© THALES BROADCAST & MULTIMEDIA, 2005

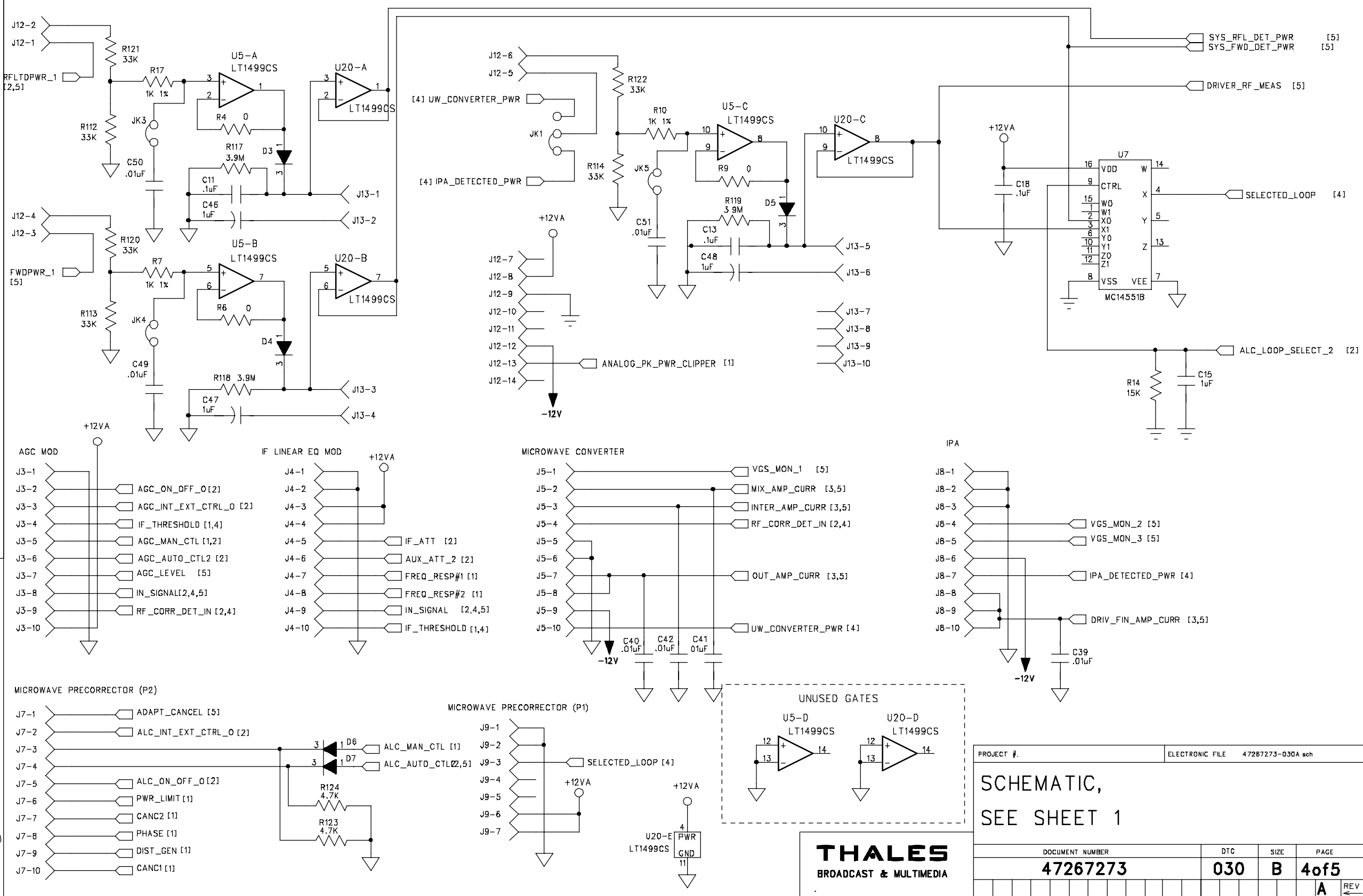


PROJECT #.										ELECTRONIC FILE										47267273-030A sch																																																																																																																																																																																																																																																																																																																																																																																																																																																																																																																																																																																																																																																																																																																																																																																																																																																																																																																																																																																																																																																																																																																																																																																																																																																																																																																																																																																																																																																																																																																																																																																																																																																																																																																																																																																													
SCHEMATIC, SEE SHEET 1																																																																																																																																																																																																																																																																																																																																																																																																																																																																																																																																																																																																																																																																																																																																																																																																																																																																																																																																																																																																																																																																																																																																																																																																																																																																																																																																																																																																																																																																																																																																																																																																																																																																																																																																																																																																																	
DOCUMENT NUMBER															DTC					SIZE					PAGE																																																																																																																																																																																																																																																																																																																																																																																																																																																																																																																																																																																																																																																																																																																																																																																																																																																																																																																																																																																																																																																																																																																																																																																																																																																																																																																																																																																																																																																																																																																																																																																																																																																																																																																																																																																								
47267273															030					B					3 of 5																																																																																																																																																																																																																																																																																																																																																																																																																																																																																																																																																																																																																																																																																																																																																																																																																																																																																																																																																																																																																																																																																																																																																																																																																																																																																																																																																																																																																																																																																																																																																																																																																																																																																																																																																																																								
																																																																																																																																																																																																																																																																																																																																																																																																																																																																																																																																																																																																																																																																																																																																																																																																																																																																																																																																																																																																																																																																																																																																																																																																																																																																																																																																																																																																																																																																																																																																																																																																																																																																																																																																																																																																																	</

THIS DOCUMENT AND THE INFORMATION IN IT IS THE PROPERTY OF THALES BROADCAST & MULTIMEDIA ("THALES"). THIS DOCUMENT AND INFORMATION SHALL NOT BE REPRODUCED OR DISCLOSED TO ANY PERSON OR ENTITY WITHOUT PRIOR WRITTEN CONSENT FROM THALES. CE DOCUMENT ET LES INFORMATIONS QU'IL CONTIENT SONT LA PROPRIÉTÉ DE THALES BROADCAST & MULTIMÉDIA ("THALES"). ILS NE PEUVENT ÊTRE REPRODUITS NI COMMUNIQUÉS À DES SANS L'AUTORISATION PRÉALABLE ÉCRITE DE THALES.

THIS DOCUMENT HAS BEEN PRODUCED ON: PADS POWER LOGIC
CAD SYSTEM. HANDWRITTEN CHANGE FORBIDDEN.

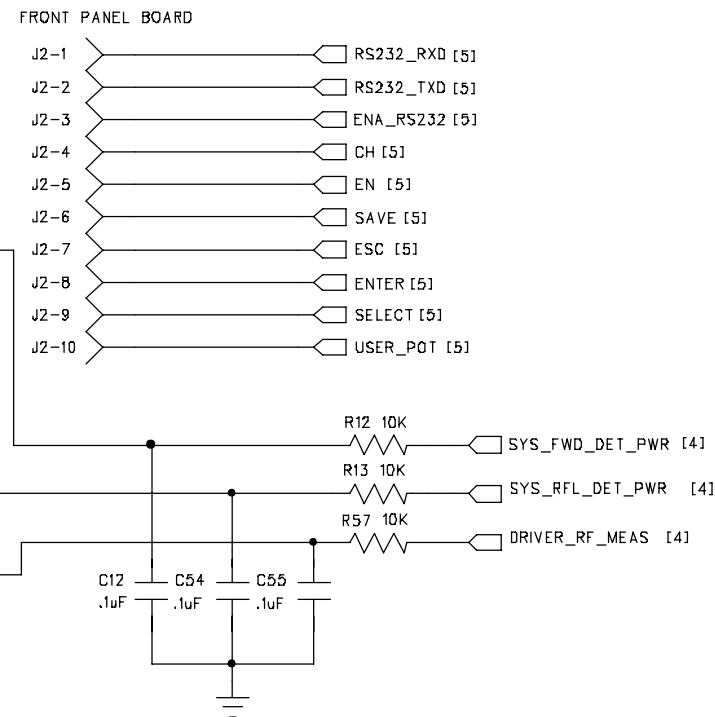
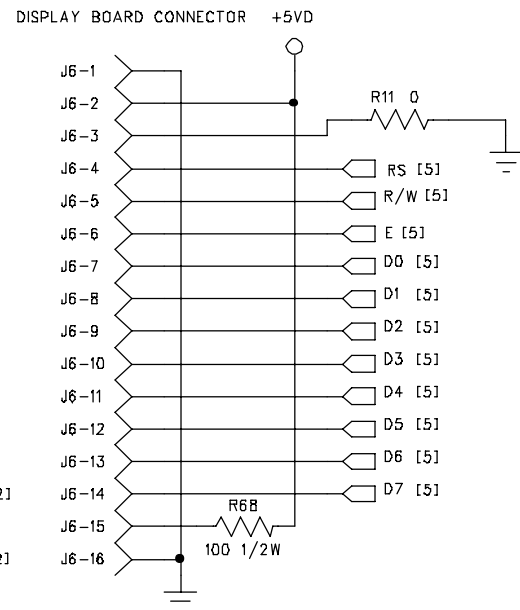
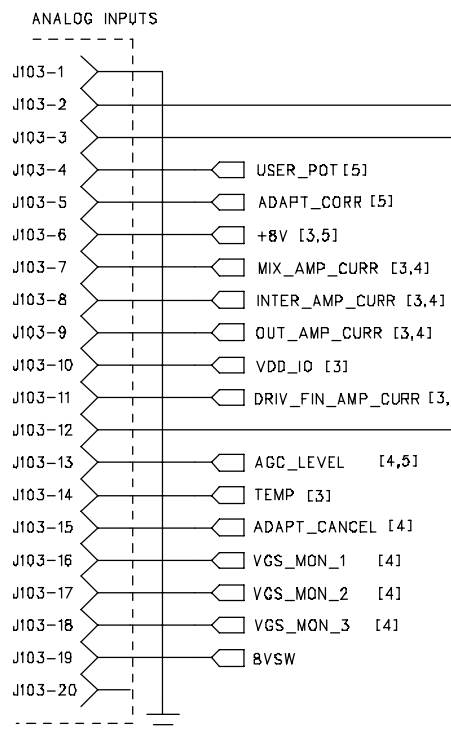
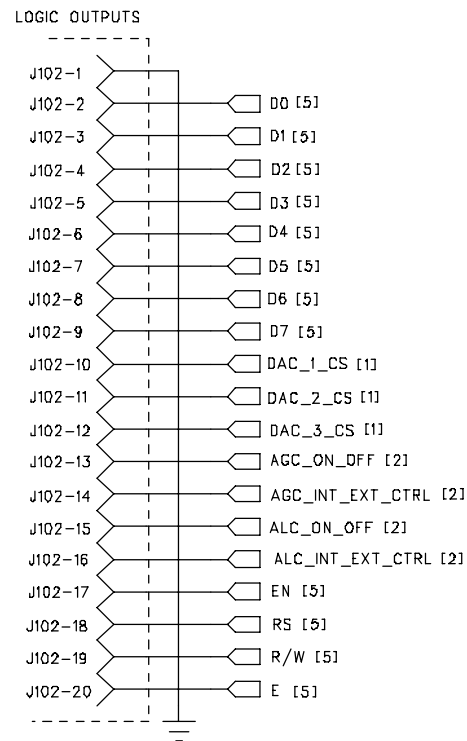
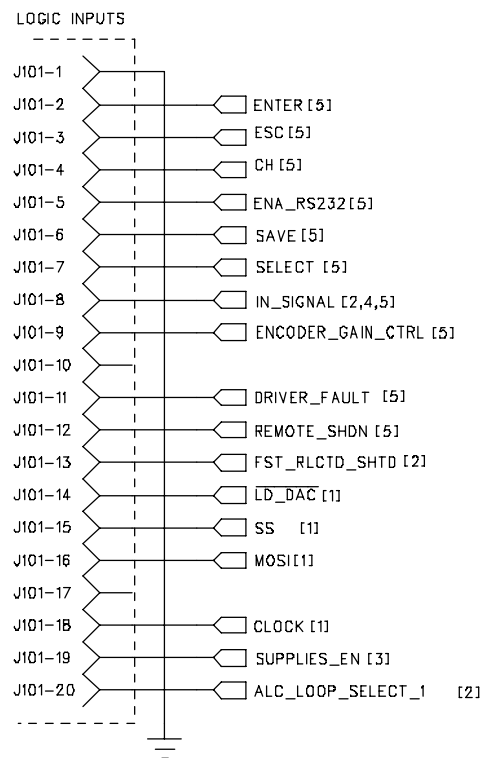
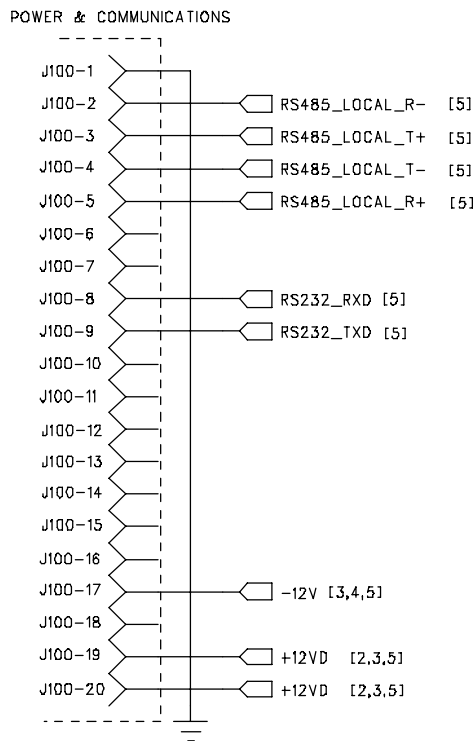
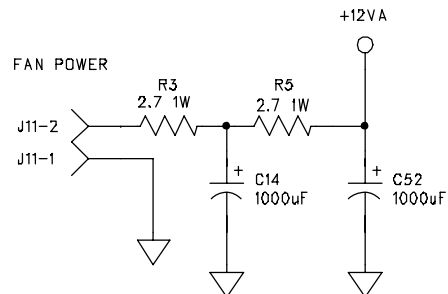
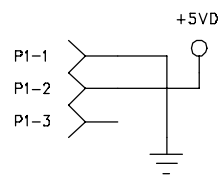
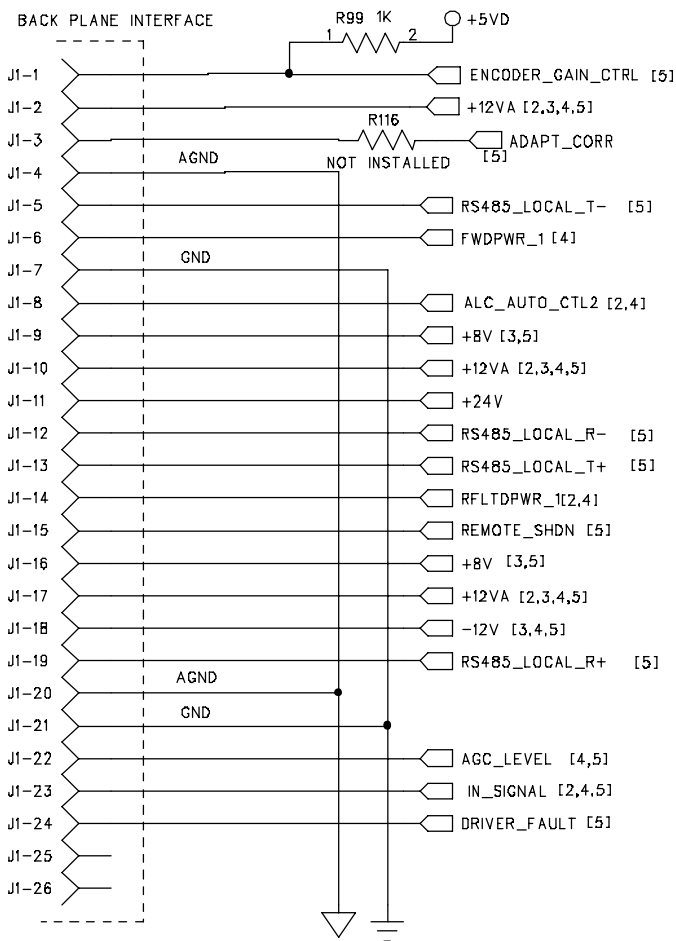
© THALES BROADCAST & MULTIMEDIA, 2005



THIS DOCUMENT AND THE INFORMATION IN IT IS THE PROPERTY OF THALES BROADCAST & MULTIMEDIA ("THALES"). THIS DOCUMENT AND INFORMATION SHALL NOT BE REPRODUCED OR DISCLOSED TO ANY PERSON OR ENTITY WITHOUT PRIOR WRITTEN CONSENT FROM THALES. CE DOCUMENT ET LES INFORMATIONS QU'IL CONTIENT SONT LA PROPRIETE DE THALES BROADCAST & MULTIMEDIA ("THALES"). ILS NE PEUVENT ETRE REPRODUITS NI COMMUNIQUEES A DES SANS L'AUTORISATION PREALABLE ECRITE DE THALES.

THIS DOCUMENT HAS BEEN PRODUCED ON: PADS POWER LOGIC
CAD SYSTEM. HANDWRITTEN CHANGE FORBIDDEN.

© THALES BROADCAST & MULTIMEDIA, 2005



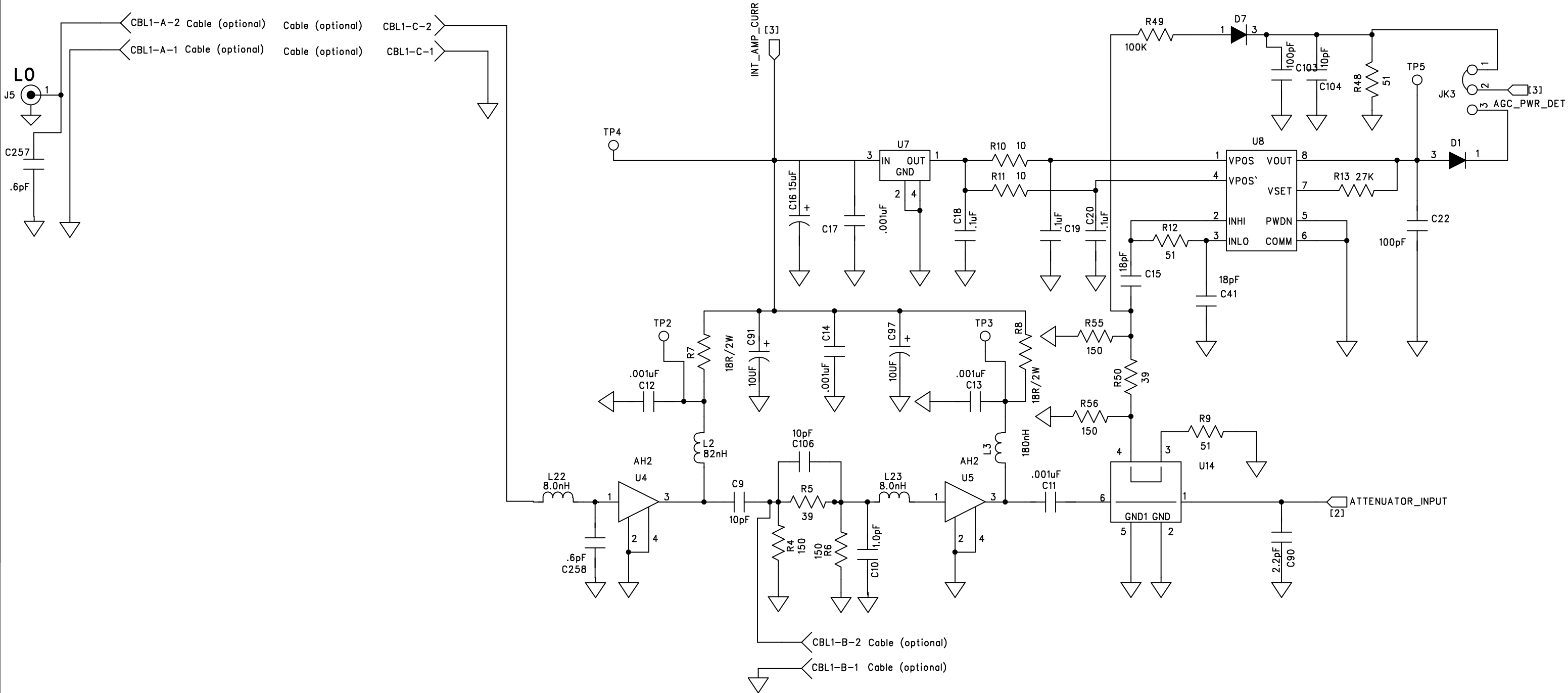
PROJECT #.	ELECTRONIC FILE	47267273-030A sch
SCHEMATIC, SEE SHEET 1		
DOCUMENT NUMBER	DTC	SIZE
47267273	030	B
PAGE	5 of 5	REV
A		

THALES
BROADCAST & MULTIMEDIA

THIS DOCUMENT AND THE INFORMATION IN IT IS THE PROPERTY OF THOMSON BROADCAST & MULTIMEDIA ("THOMSON"). THIS DOCUMENT AND INFORMATION SHALL NOT BE REPRODUCED OR DISCLOSED TO ANY PERSON OR ENTITY WITHOUT PRIOR WRITTEN CONSENT FROM THOMSON. CE DOCUMENT ET LES INFORMATIONS QU'IL CONTIENT SONT LA PROPRIETE DE THOMSON BROADCAST & MULTIMEDIA ("THOMSON"). ILS NE PEUVENT ETRE REPRODUITS NI COMMUNIQUE A DES SANS L'AUTORISATION PREALABLE ECRITE DE THALES.

THIS DOCUMENT HAS BEEN PRODUCED ON: PADS POWER LOGIC CAD SYSTEM. HANDWRITTEN CHANGE FORBIDDEN.

THOMSON BROADCAST & MULTIMEDIA ©2007

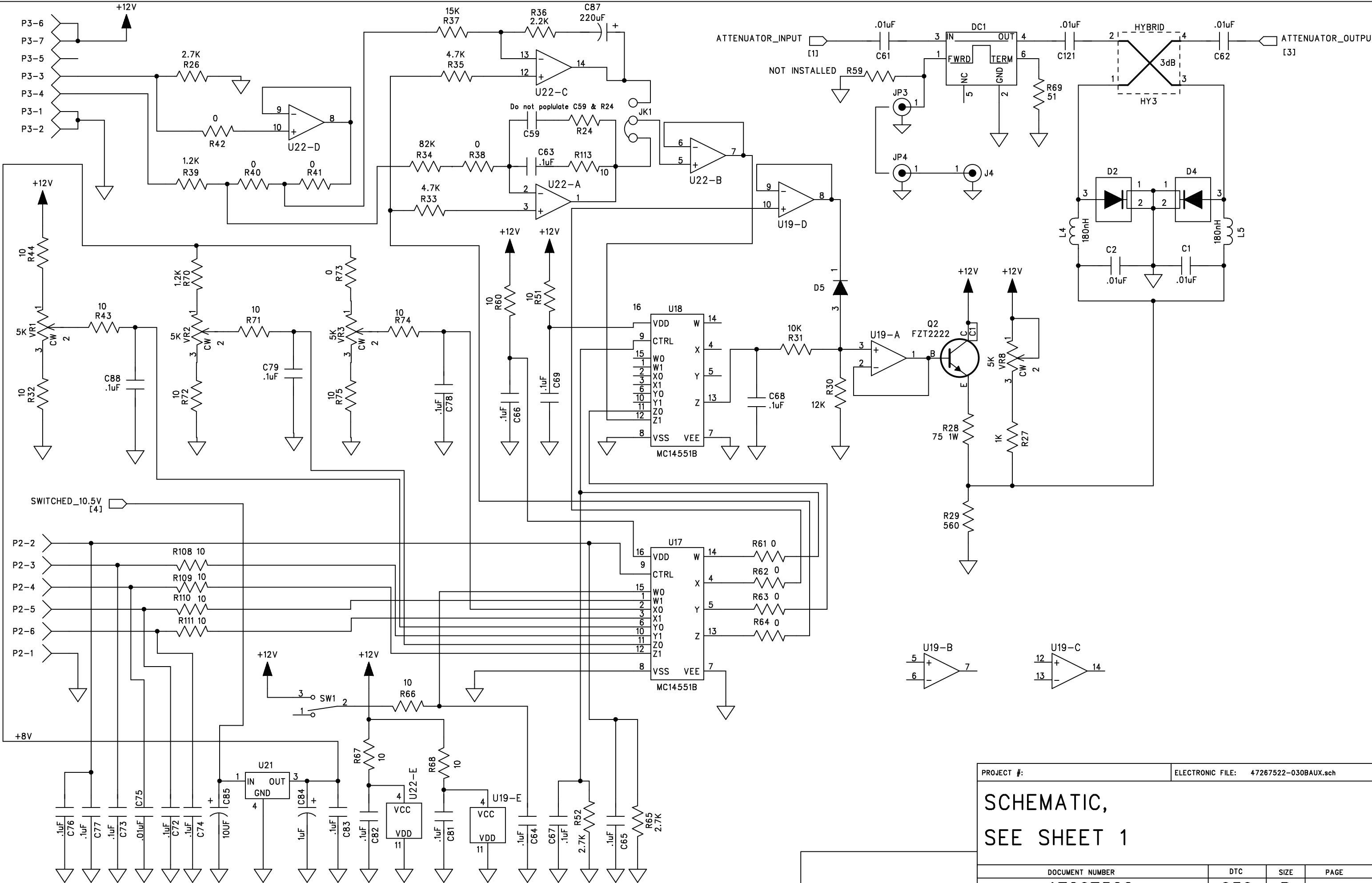


B		A. Castro				ENGINEERING RELEASE			
REV	CHANGE ORDER	ISSUED	DATE	AUTHORIZED	DATE	DESCRIPTION			
ISSUED:	A. castro	02-16-07	PROJECT #:			ELECTRONIC FILE: 47266667-030BAUX.sch			
EDA:	.	.	SCHEMATIC, UHF +26dBm TPPO UP-CONVERTER/PRE-AMP						
ENGR:	A. Castro	02-16-07							
ENGR:	.	.							
EDC:	.	.							
THOMSON BROADCAST & MULTIMEDIA, INC. 104 Feeding Hills RD, Southwick, MA, 01077			DOCUMENT NUMBER			DTC	SIZE	PAGE	
			47267522			030	B	1 OF 4	
									B REV

THIS DOCUMENT AND THE INFORMATION IN IT IS THE PROPERTY OF THOMSON BROADCAST & MULTIMEDIA ("THOMSON"). THIS DOCUMENT AND INFORMATION SHALL NOT BE REPRODUCED OR DISCLOSED TO ANY PERSON OR ENTITY WITHOUT PRIOR WRITTEN CONSENT FROM THOMSON. CE DOCUMENT ET LES INFORMATIONS QU'IL CONTIENT SONT LA PROPRIETE DE THOMSON BROADCAST & MULTIMEDIA ("THOMSON"). ILS NE PEUVENT ETRE REPRODUITS NI COMMUNIQUEES A DES SANS L'AUTORISATION PREALABLE ECRITE DE THOMSON.

THIS DOCUMENT HAS BEEN PRODUCED ON: PADS POWER LOGIC CAD SYSTEM. HANDWRITTEN CHANGE FORBIDDEN.

THOMSON BROADCAST & MULTIMEDIA ©2007



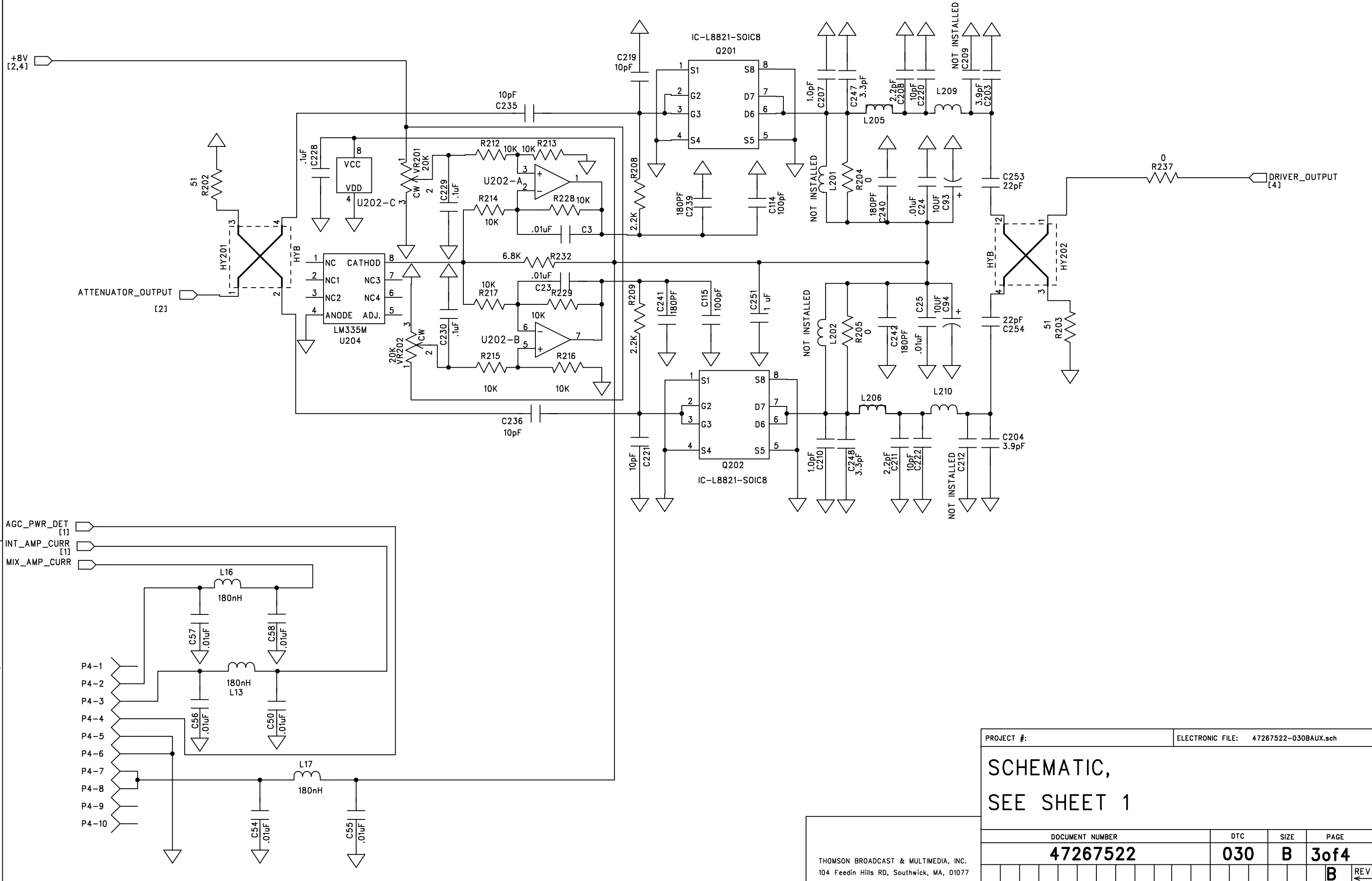
PROJECT #:										ELECTRONIC FILE: 47267522-030BAUX.sch									
SCHEMATIC, SEE SHEET 1																			
DOCUMENT NUMBER										DTC		SIZE		PAGE					
47267522										030		B		2 of 4					
																		B	REV

THOMSON BROADCAST & MULTIMEDIA, INC.
104 Feedin Hills RD, Southwick, MA, 01077

THIS DOCUMENT AND THE INFORMATION IN IT IS THE PROPERTY OF THOMSON BROADCAST & MULTIMEDIA ("THOMSON"). THIS DOCUMENT AND INFORMATION SHALL NOT BE REPRODUCED OR DISCLOSED TO ANY PERSON OR ENTITY WITHOUT PRIOR WRITTEN CONSENT FROM THOMSON. CE DOCUMENT ET LES INFORMATIONS QU'IL CONTIENT SONT LA PROPRIETE DE THOMSON BROADCAST & MULTIMEDIA ("THOMSON"). ILS NE PEUVENT ETRE REPRODUITS NI COMMUNIQUEES A DES SANS L'AUTORISATION PREALABLE ECRITE DE THOMSON.

THIS DOCUMENT HAS BEEN PRODUCED ON: PADS POWER LOGIC CAD SYSTEM. HANDWRITTEN CHANGE FORBIDDEN.

THOMSON BROADCAST & MULTIMEDIA ©2007



THIS DOCUMENT AND THE INFORMATION IN IT IS THE PROPERTY OF THOMSON BROADCAST & MULTIMEDIA ("THOMSON"). THIS DOCUMENT AND INFORMATION SHALL NOT BE REPRODUCED OR DISCLOSED TO ANY PERSON OR ENTITY WITHOUT PRIOR WRITTEN CONSENT FROM THOMSON. CE DOCUMENT ET LES INFORMATIONS QU'IL CONTIENT SONT LA PROPRIÉTÉ DE THOMSON BROADCAST & MULTIMÉDIA ("THOMSON"). ILS NE PEUVENT ÊTRE REPRODUITS NI COMMUNIQUÉS À DES SANS L'AUTORISATION PRÉALABLE ÉCRITE DE THOMSON.

THIS DOCUMENT HAS BEEN PRODUCED ON: PADS POWER LOGIC CAD SYSTEM. HANDWRITTEN CHANGE FORBIDDEN.

THOMSON BROADCAST & MULTIMEDIA ©2007

