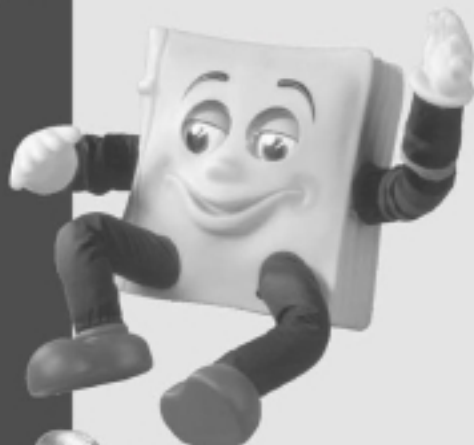




Smart. Alex™



Please visit our website at
www.team-concepts.com

Ages 4 and Up

TEAM CONCEPTS

We at TEAM CONCEPTS strive for top quality in all of our products. Should you have any problems or questions, please call our customer services department at 800-486-0695 (USA and Canada only).

We make learning and fun our business!

Look for us on the World Wide Web – <http://www.team-concepts.com>

POWER SUPPLY

Power Supply

Base Station Power Supply

Rating: 9V (DC) (1.8W)

Adapter: DC-9V 300mA

Smart Alex Doll Power Supply

Rating: 6V (DC) (2.7W)

Batteries: 4 x 1.5V "D" / "UM-1"

Do not use rechargeable batteries.

Do not mix alkaline, standard (carbon-zinc) or rechargeable batteries.

Do not mix old and new batteries.



Enabled with Living Object™ Technology by Creator, Ltd.



4 x 1.5V
"D"/"UM-1"



PRINTED IN CHINA
ALL RIGHTS RESERVED

PPG209801-1US001-1

About the Software

The Smart Alex software brings Smart Alex to life, enables you to play games, download new scripts, schedule scripts and send emails to other Smart Alex users around the world.



This is the main menu screen. From here, you can choose from the many software features including:

- ✓ Toy Check
- ✓ Scheduler (Plan and Play)
- ✓ Club
- ✓ Internet (Script Library)
- ✓ Player
- ✓ Storyland Activities



Toy Check

Use the Toy Check screen to check if Smart Alex is working properly. You can check the speech, listening, recording, eye movement and sensors.

To check if the toy is working properly, first click on the base station icon. You will be alerted if it is not connected. Next, check the toy connection. If the toy is found, you can check the speech, listening, recording, eye movement and sensor function.

If the toy is not found, check the base station. Make sure the doll has new batteries and is turned on. If the toy has been on for some time, you may need to squeeze a hand to wake it up. If the toy still cannot be found, you may need to change the toy's channel and number. Click "Set toy's channel and number" then select "Find New Toy".

About the Software



Registration

Before you can access any of the internet downloadable scripts, you need to register. Make sure that you are connected to the internet, then click on the registration button. After you have completed registration, you will be able to access the online scripts to expand Smart Alex's capabilities as well as send and receive emails to other Smart Alex users in the Club.

Internet

Download more scripts from the Internet to give Smart Alex even more to talk about!

You will need to be registered and connected to the internet before you can download any new scripts. By setting your interests in the Registration menu, you can help us to make available the content that is of interest to you.



Club

In the Club, you can email other Smart Alex registered users. To ensure you do not receive messages from unknown users, you need to give your friends your registered name to enter into their computers, and you need to enter their names into your computer.

Getting Started

About Smart Alex

Smart Alex cannot wait to start playing with you. But first, we need to take a few moments to set Smart Alex up.

Please follow this step by step guide carefully and Smart Alex will be singing, telling stories and jokes in no time!

Smart Alex is a PC enhanced toy, meaning that he needs a PC to bring his great features to life.

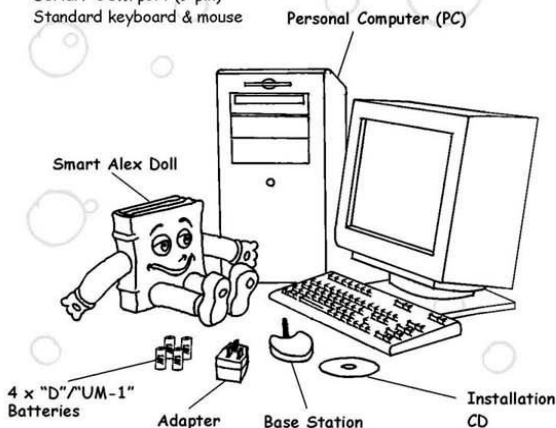
Smart Alex is cordless! There are no wires connecting your PC to Smart Alex. Your Smart Alex comes with a base station which is connected to your PC. The base station transmits signals to and from Smart Alex with technology similar to that of a cordless phone.



Installation in 4 Easy Steps

What you will need:

- ✓ Smart Alex Doll
- ✓ 4 "D"/"UM-1" Batteries
- ✓ Base Station
- ✓ DC Adapter
- ✓ Smart Alex Installation CD
- ✓ Personal Computer (PC)
 - PC minimum requirements:
 - Windows 95, (Windows 98 recommended)
 - 166 Pentium with 32MB RAM (233MHz with 64 MB RAM recommended)
 - 800*600 24bit color display
 - 480MB free hard drive space
 - Serial / COM port (9 pin)
 - Standard keyboard & mouse

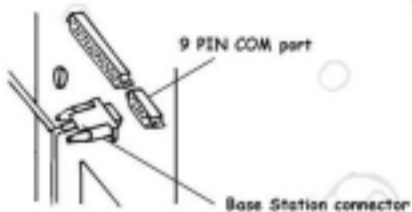


Set Up

Step 1

Connect the Base Station to your PC (PC turned OFF)

Let's connect the base station to your PC.



- ✓ Make sure that your PC is switched OFF and unplugged at the mains.
- ✓ Locate the 9 PIN COM port, which is usually found at the back of the PC. If you are unsure, please check your PC's instruction manual.
- ✓ Securely plug in the base station connector to the COM port.



Set Up

Step 2

Connect the Power Adapter to the Base Station

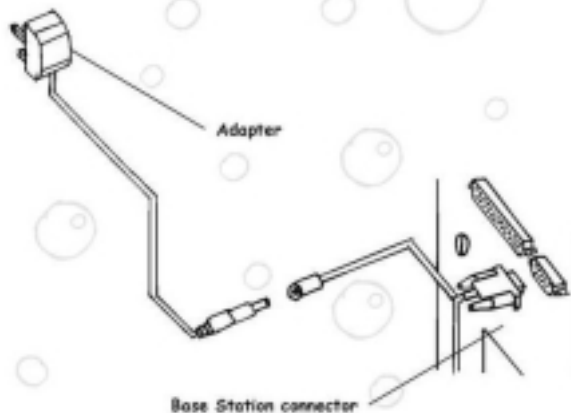
Checklist

- ✓ Base Station Connected to COM port of your PC.

Super! Now let's power the base station.

The Smart Alex base station is powered by a standard 9V DC 300mA center positive $\ominus \oplus$ AC adapter. You may use a Radio Shack 9V DC 300mA adapter or equivalent.

We highly encourage you to use the Team Concepts 9V AC Adapter which may be plugged into the jack connected to the base station. Important! When using an adapter, always plug it into the unit before plugging it into the mains.



Trouble Shooting

If the Base Station is not connected...

...check that the base is plugged into the COM port of your PC and that the adapter is connected to the base and the mains.

If the Toy cannot be found...

...make sure the doll is switched on and click "Set toy's channel and number" then select "Find New Toy". Once the toy is found, click update. If the toy still cannot be found, install new batteries and try again.
...the toy may be too far away from the base station.

If the volume of the voice/sounds/music is too low...

...adjust the volume in the "Toy Check" or install new batteries.

If there is a continuous buzzing sound and the unit doesn't operate...

...install new batteries.

If the unit begins talking at a very high or low rate of speed...

...install new batteries.

If the unit malfunctions due to electrical fast transient...

...reset the unit by removing and replacing the batteries.

If the unit malfunctions due to radio frequency interference...

...reset the unit by removing and replacing the batteries.

If the unit malfunctions due to electrostatic discharge...

...reset the unit by removing and replacing the batteries.

If problems continue...

...please call our customer support line or check our website at www.team-concepts.com and click on the Smart Alex icon.

CARE INSTRUCTIONS

Do

...keep the unit clean by wiping with a slightly damp or dry soft cloth

...remove the batteries if not using Smart Alex for long periods of time

Don't

...clean Smart Alex with chemical solvents

...spill anything onto Smart Alex

...drop Smart Alex

...take Smart Alex apart

...use rechargeable batteries

...place Smart Alex in direct sunlight or near a direct source of heat.

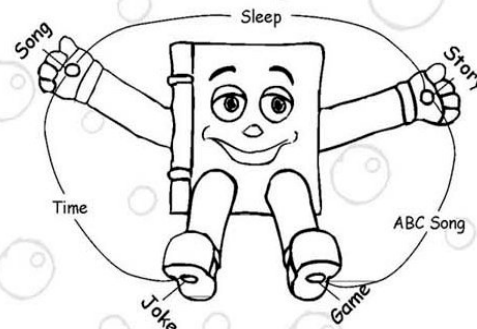
Standalone Play

Smart Alex can be played with even when he is away from your PC. To play with Smart Alex away from your PC, you need to make sure that:

1. You PC is turned on.
2. The Base station is properly connected and has power.
3. The Smart Alex software is running.

When playing with Smart Alex in the Standalone mode, Smart Alex will sometimes talk automatically.

When Smart Alex is not talking or listening you can squeeze his hand and feet sensors to choose a song, story, game or more.



If you do not play with Smart Alex for a few minutes, he will fall asleep automatically.

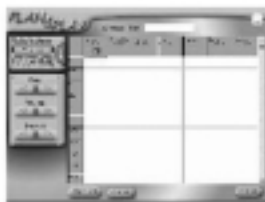
Have Fun!!!

About the Software



Player

Use the player to run scripts that came with Smart Alex, or scripts downloaded from the Internet. First select a category, then a script. After choosing a script, make sure Smart Alex is switched on then press the play icon to run the script.

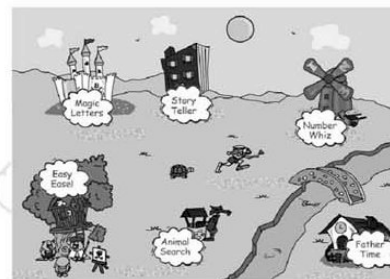


Scheduler "Plan & Play!"

The Scheduler enables you to set Smart Alex to do specific things at different times. If your favorite TV show is on at 4 o'clock, you can set Smart Alex to remind you in advance by using the text-to-speech feature. You can also schedule Smart Alex scripts to run whenever you like.

About the Software

Storyland



In Storyland, you can click on the icons to play a game or listen to a story. The Storyland activities work best if Smart Alex is sitting by the PC so that your child can use the keyboard and mouse to play the games. In some games, your child can squeeze Smart Alex's hands and feet to control the game.

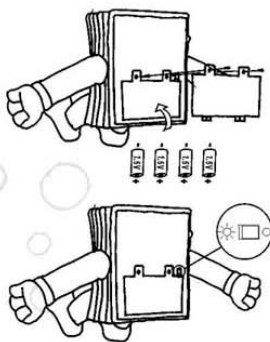
If Smart Alex is not awake or by the PC, his voice will come from the PC itself, so you will need speakers and a microphone connected to the PC if you want to play the games without Smart Alex.

- Magic Letters - develops vocabulary and spelling skills
- Number Whiz - helps teach addition and subtraction
- Animal Search - match the animal to its footprint
- Father Time - learn to tell the time
- Easy Easel - creative coloring fun
- Storyland Stories - interactive illustrated stories

Precautions Regarding the Power Supply

Installing Smart Alex's Batteries

To insert the batteries, unscrew and open the door of the battery compartment. Insert 4 "D"/UM-1 batteries as shown in the diagram. Screw shut the battery compartment door and you're ready to play! Please note the important points about using batteries with Smart Alex.



IMPORTANT:

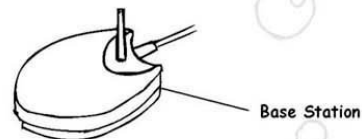
DO NOT use rechargeable batteries.
DO NOT mix old and new batteries.
DO NOT mix alkaline, standard (carbon-zinc) or rechargeable batteries.

Incorrect usage of the batteries may result in damage to Smart Alex. Please note the following precautions:

- Make sure that the positive (+) and negative (-) poles of each battery are positioned correctly in the unit.
- Do not mix alkaline, standard (carbon-zinc) or rechargeable batteries.
- Never mix old with new batteries.
- Never mix different types of batteries. Only use 1.5V "D"/UM-1.
- Never leave dead batteries in the battery compartment.
- Remove the batteries if you do not plan to use Smart Alex for an extended period of time.
- Do not try to recharge non-rechargeable batteries.
- Do not allow the supply terminals to be short-circuited.
- Do not expose batteries to direct heat.
- Do not let batteries be shorted.
- Do not take batteries apart.

Precautions Regarding the Power Supply

Smart Alex Base Station Power Supply



Be sure to use a standard 9V DC 300mA center positive $+\ominus$ AC adapter to power the base station. Always plug the adapter into the base station before plugging it into the mains. Always make sure that the unit is off before connecting a power supply to the unit.

The DC adapter should be regularly examined for potential hazards such as damage to the mains cable, casing, plug, etc. In the event of such damage, do NOT use the DC adapter with the Smart Alex base station until the damage is repaired.

The Smart Alex doll is powered by batteries only. Do not power the Smart Alex doll with an DC adapter.

Incorrect usage of the adapter may result in damage to the Smart Alex base station. Please note the following precautions:

- Smart Alex is not for children under 4 years of age.
- Be sure to disconnect the adapter before cleaning.
- Make sure that you use a standard 9V DC 300mA center positive $+\ominus$ AC adapter.
- The adapter is not a toy.
- Toys liable to be cleaned with liquid must be disconnected from the adapter before cleaning.

Set Up

Step 3

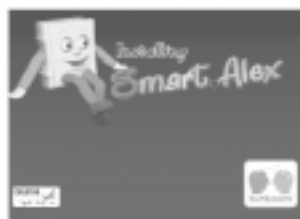
Install the Smart Alex PC Software (PC switched ON)

Checklist

- ✓ Base Station Connected to COM port of your PC.
- ✓ Adapter Connected to Base Station and mains.
- ✓ Base Station power indicator light is glowing red.

Excellent! Now let's install the Smart Alex software.

Turn on your PC and make sure that no other programs are running. Insert the Smart Alex software installation CD into your PC. The CD should autorun and the following screen will appear.



Set Up

Step 4

Testing Smart Alex.

Checklist

- ✓ Base Station Connected to COM port of your PC.
- ✓ Adapter Connected to Base Station and mains.
- ✓ Base Station power indicator light is glowing red.
- ✓ PC turned on and running Smart Alex software.

Great! Now let's test Smart Alex.



Your base station should already be connected to your PC. If not, shutdown your PC, connect the base station and reboot. Run the Smart Alex software (you do not need to reinstall the software from the CD again). Click Check to make sure the base station is connected correctly.



To insert the batteries, slide the door of the battery compartment open and insert 4 "D"/UM-1 batteries as shown in the diagram. Close the battery compartment door and you're ready to play! Please note the important points about using batteries with Smart Alex.

Insert the "Toy Number" into the box and click Check. If everything is OK, you'll be taken to the main Smart Alex Menu.

Congratulations, you have finished setting up the Smart Alex hardware and installed the software!

The FCC Wants you to know

This equipment has been tested and found to comply with the limits for a Class B digital device, pursuant to Part 15 of the FCC rules. These limits are designed to provide reasonable protection against harmful interference in a residential installation. This equipment generates, uses and can radiate radio frequency energy and, if not installed and used in accordance with the instructions, may cause harmful interference to radio communications. However, there is no guarantee that interference will not occur in a particular installation. If this equipment does cause harmful interference to radio or television reception, which can be determined by turning the equipment off and on, the user is encouraged to try to correct the interference by one or more of the following measures:

- a) Reorient or relocate the receiving antenna.
- b) Increase the separation between the equipment and receiver.
- c) Connect the equipment to an outlet on a circuit different from that to which the receiver is connected.

FCC WARNING

Modifications not expressly approved by the manufacturer could void the user authority to operate the equipment under FCC Rules.