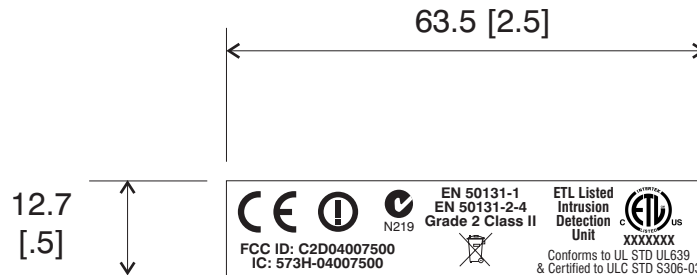


EN	REV	DESCRIPTION	CHK	DATE	APPVD	DATE
EC-0XXXX	A	Production Release	RP	8/08	TB	8/08



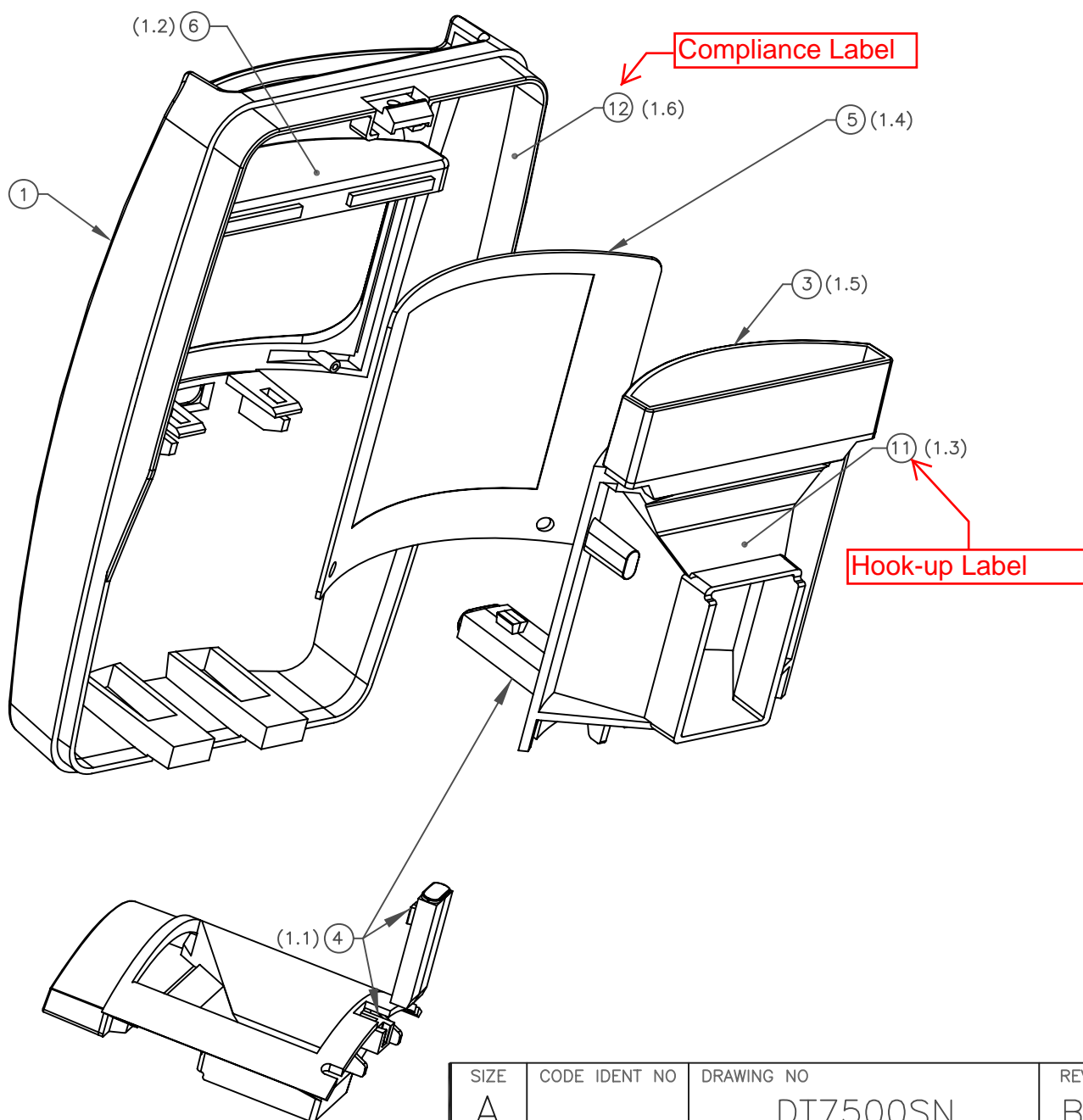
Notes: Unless otherwise specified

- MATERIAL:** Material: White Polyester, Honeywell P/N 5-045-024-00.
Alternate: P/N 5-045-034-00 (Specification for label material: UL Recog. PGDQ2 OR PGGU2).
- PRINT COLOR:** Black Ink
- ARTMASTER:** 800-01646A.EPS
- SOURCE FILE FORMAT:** CorelDraw V9.0.
- Bag and tag with P/N, and revision, vendor name or logo.

ECO No.: EC-0XXXX	Drawing No.: 800-01646	Rev.: A	Title: Label, Compliance, DT7500SN
Approvals: DWN. C. Moniz	Date: 8/08	Unless otherwise specified: Dimensions are in millimeters [inches]. Tolerances are: .X ± 0.3 [.01] .XX ± 0.13 [.005] Angles +/- 0.5° All information contained hereon is the property of Honeywell and is considered proprietary and subject to return upon demand. Acceptance and retention hereof signifies agreement by the recipient that the information will not be disclosed to others nor used contrary to the interests of Honeywell without prior written permission.	
CHECK R. Phi	8/08	<div>Do Not Scale Drawing</div> <div>Size: A</div> <div>Honeywell</div> <div>Scale: 1:1 Page: 1 of 1</div>	
APPRV. T. Babich	8/08		

1.0 TOP COVER ASSEMBLY: SEE FIGURE 1

- 1.1 ALIGN DOVETAIL ON LIGHT PIPE (ITEM 4) WITH SLOT IN BUG GUARD (ITEM 3) AND PRESS INTO SLOT.
- 1.2 INSTALL LOOKDOWN WINDOW (ITEM 6) IN TOP COVER (ITEM 1). HORIZONTAL RIBS ON LOOKDOWN WINDOW PRESS AGAINST INSIDE SURFACE OF TOP COVER.
- 1.3 INSTALL HOOKUP LABEL (ITEM 11) ON BUG GUARD AS SHOWN.
- 1.4 ASSEMBLE LENS (ITEM 5) IN TOP COVER. LENS FITS UNDER TAB AND OVER ROUND POSTS ON TOP COVER.
- 1.5 INSTALL BUG GUARD (ITEM 3) INTO TOP COVER, LOOKDOWN END FIRST, THEN SNAP INTO PLACE.
- 1.6 INSTALL LABEL (ITEM 12) INSIDE FRONT COVER APPROXIMATELY WHERE SHOWN.



SIZE	CODE IDENT NO	DRAWING NO	REV
A		DT7500SN	B
SCALE NONE		DO NOT SCALE DRAWING	SHEET 2 of 4