

FCC 2.948(a)(b)

“Description of Measurement Facilities”

Norse Lab, Inc.

13830 Issaquah-Hobart Rd.
Issaquah, WA 98027

FCC 2.993(a)(b)(1) FIELD STRENGTH MEASUREMENTS OF SPURIOUS RADIATION

FCC 2.948(a)(b) Description of Measurement Facilities

1. Location of Test Site

The test site chosen is located about 4 miles south of Issaquah, Washington at 13830 Issaquah-Hobart Rd.

2. Physical Description of Test Site

The test site consists of an open grass field, surrounded on two sides by trees but otherwise open and free of structures. The site is located in the middle of a 12-acre plot of undeveloped land. Please see photographs (figures 1-6).

3. Drawing of Test Site

Please see survey drawing (figure 7).

4. Description of Support Structures

The signal source/D.U.T was supported by a wooden turntable, 1 meter above ground. The table is rotated manually.

The spectrum analyzer was supported by a nonmetallic cart, 1 meter above ground and about 7 meters behind the receiving dipole antenna.

The dipole antenna masts are made from heavy-duty PVC pipe and were supported by wood material. The receiving antenna height is manually adjustable by a sliding carriage.

5./6. List of Measuring Equipment, with Calibration Information

Description	Manufacturer	Model	S/N	Last Cal
Spectrum Analyzer	HP	8568B	2415A00522	3/01
Signal Generator	Farnell	PSG1000	10050-00901	3/01
30-400 MHz Dipoles	Compliance Design	“Roberts”		
30-400 MHz Dipoles	Custom			
The test site is intended to be used for field strength measurements in the 25-400 MHz band for testing of HF radio communication equipment				

7. Contract Basis of Operation

The test site is not for hire to the public at this time.

8. Site Attenuation Data

The attenuation data were recorded in accordance with FCC bulletin OST55. Please see figures 8 and 9.

9. Equipment Types to be Measured

The test site is intended to be used for field strength measurements in the 25-400 MHz band for testing of HF radio communication equipment.



FIGURE 1 NORTH VIEW



FIGURE 2 SOUTH VIEW



FIGURE 3 NORTHEAST VIEW



FIGURE 4 TRANSCEIVER ON TURNTABLE WITH BATTERY SYSTEM



FIGURE 5 ANTENNA/MAST DETAIL



FIGURE 6 DIPOLES AND SPECTRUM ANALYZER AT TEST STATION

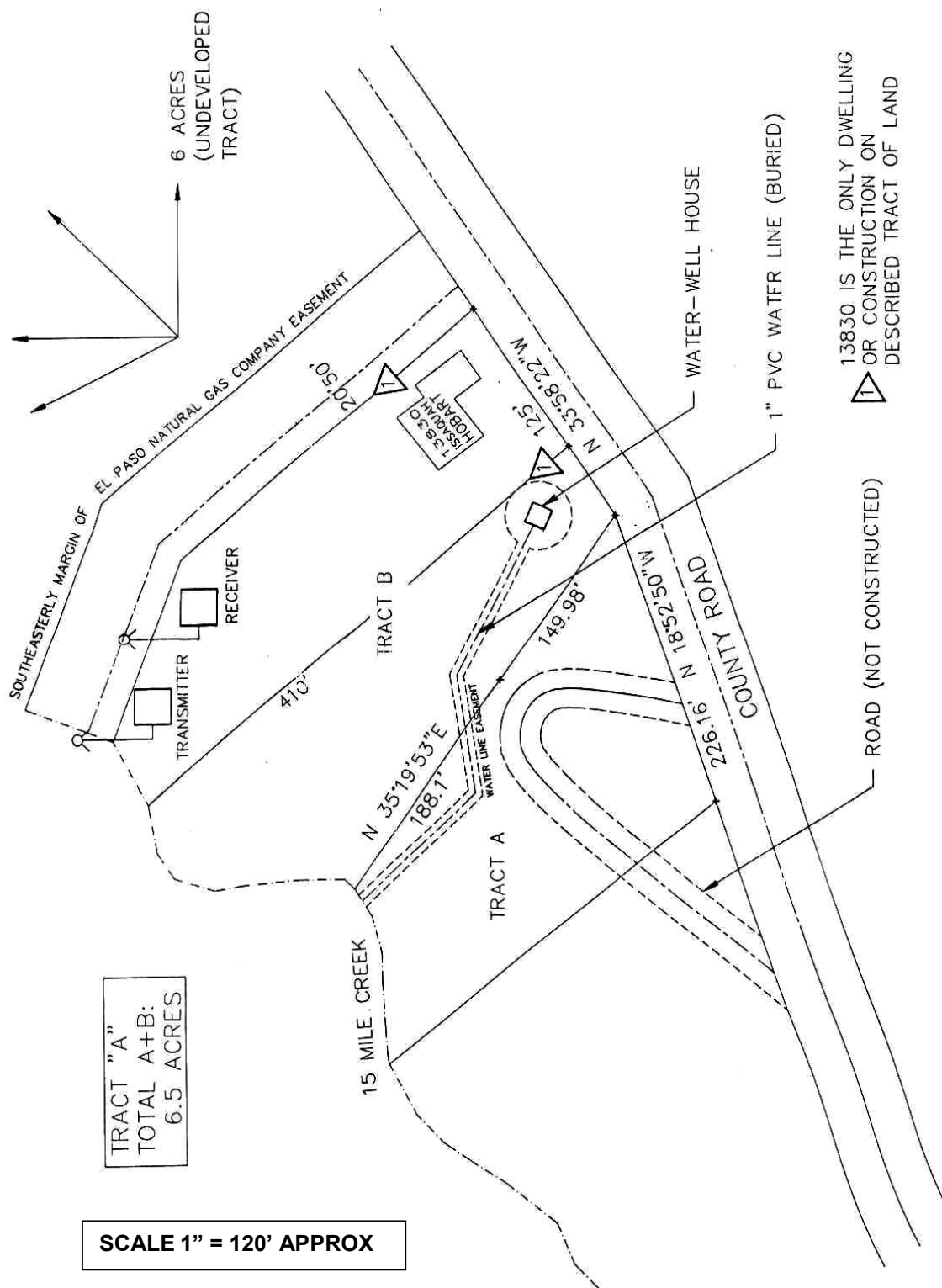


FIGURE 7 DESCRIPTION OF MEASUREMENT FACILITIES FCC 2.948(a)(b)

INSERT

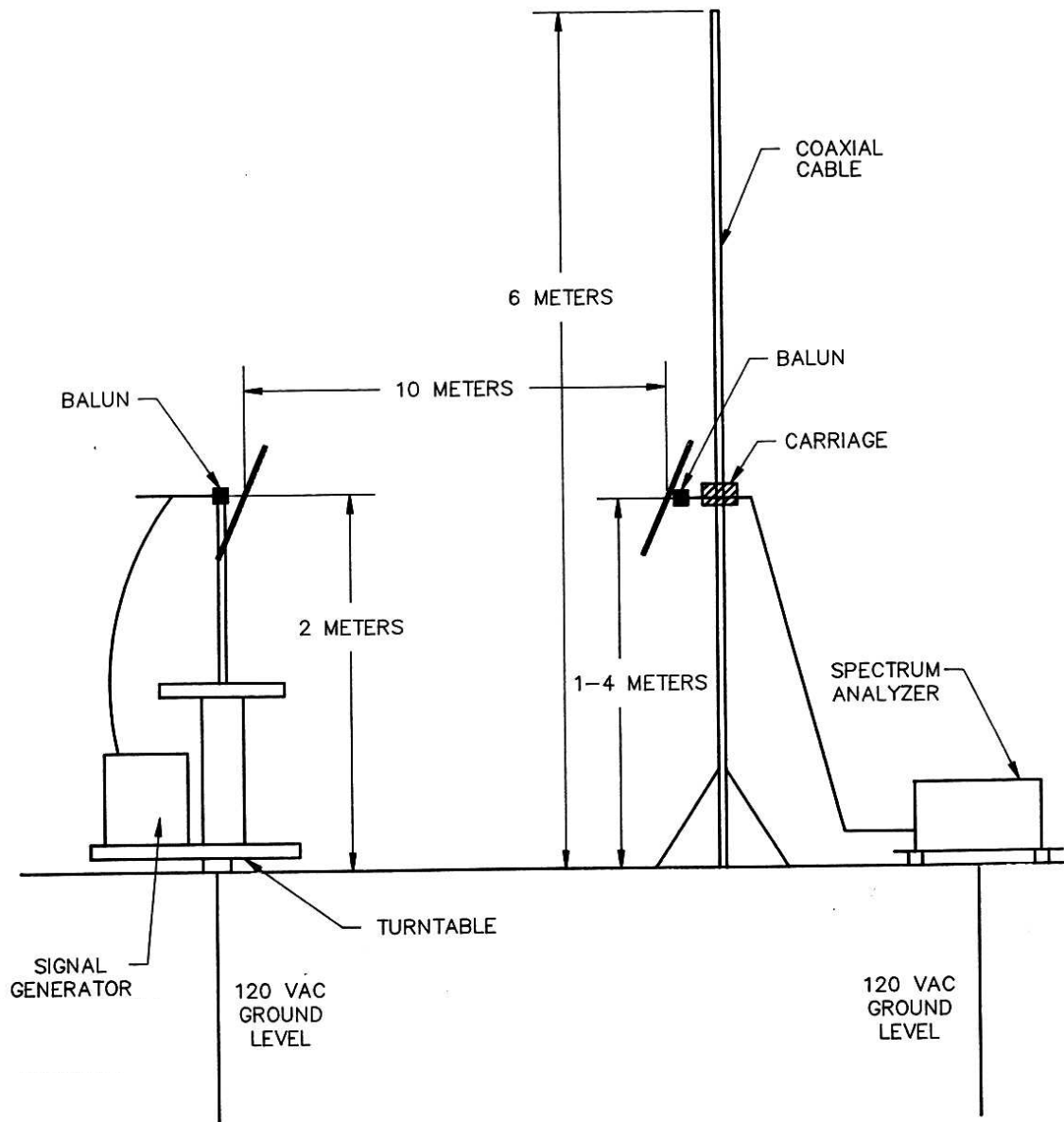
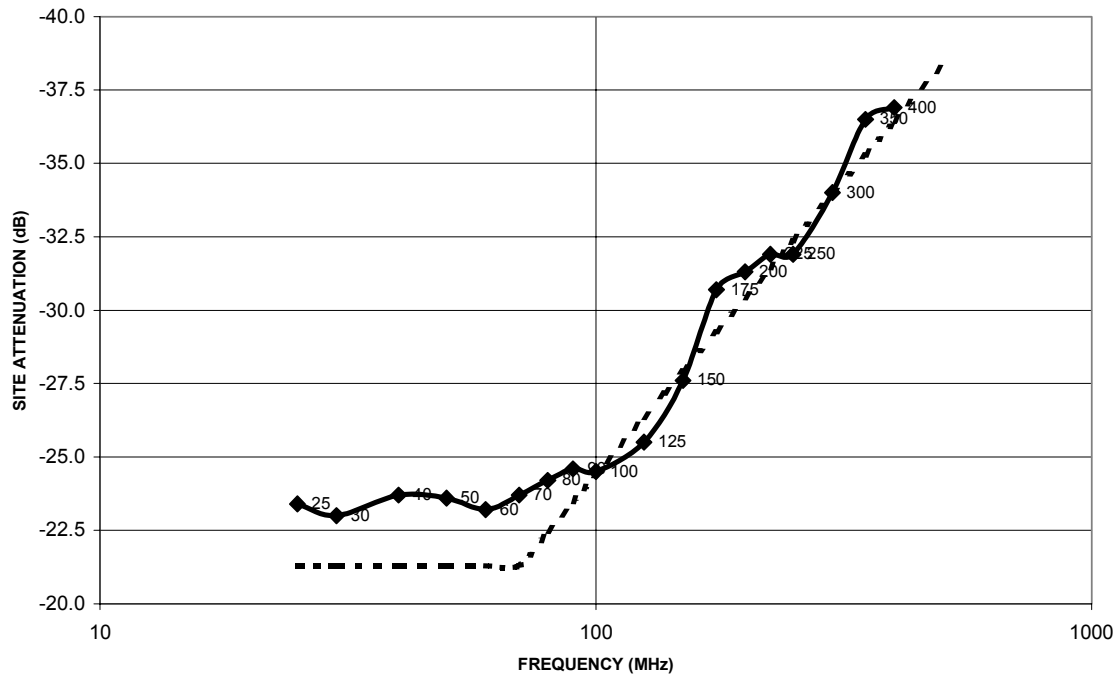


FIGURE 8 ELEVATIONAL SITE DETAIL

SITE ATTENUATION DATA FCC 2.948(a)(b)(8)



f (MHz)	25	30	40	50	60	70	80	90	100
A_s (dB)	-23.4	-23.0	-23.7	-23.6	-23.2	-23.7	-24.2	-24.6	-24.5

f (MHz)	125	150	175	200	225	250	300	350	400
A_s (dB)	-25.5	-27.6	-30.7	-31.3	-31.9	-31.9	-34.0	-36.5	-36.9

FIGURE 9 SITE ATTENUATION DATA