



Fig. 1. Photograph of the M/A-Com Model P-801T Two-Way Radio.

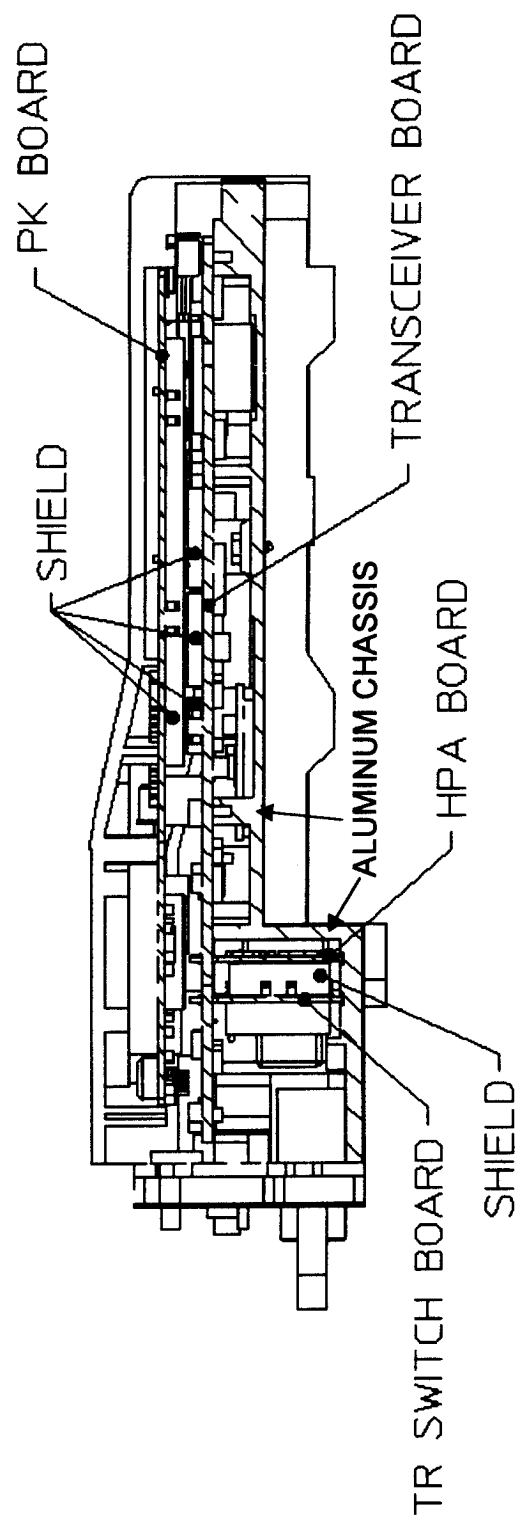


Fig. 2. A cross sectional diagram of the M/A-Com Model P-801T Radio showing shielding.

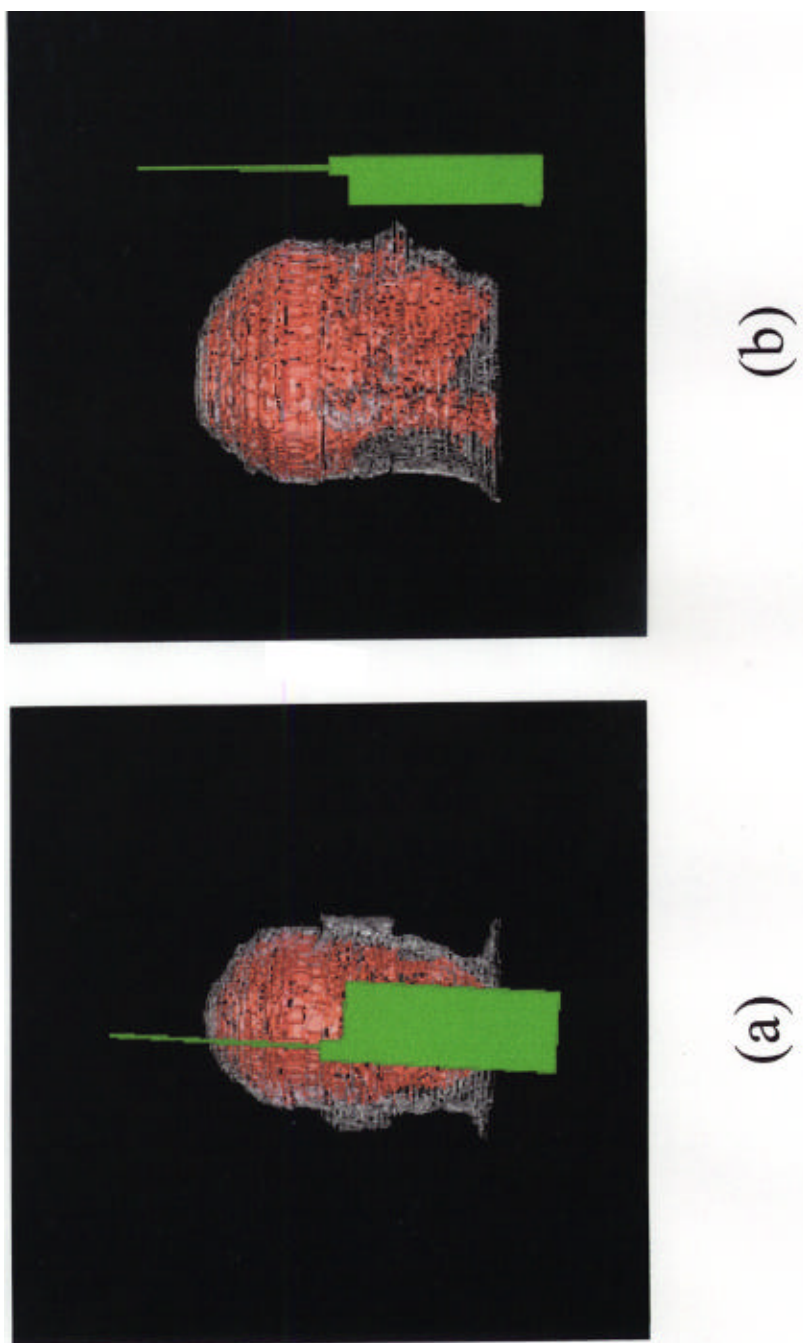


Fig. 3. The M/A-Com Portable Radio P-801T with "half-wave" antenna in front of the mouth.



Fig. 4. The M/A-Com Portable Radio P-801T in belt mount holster.

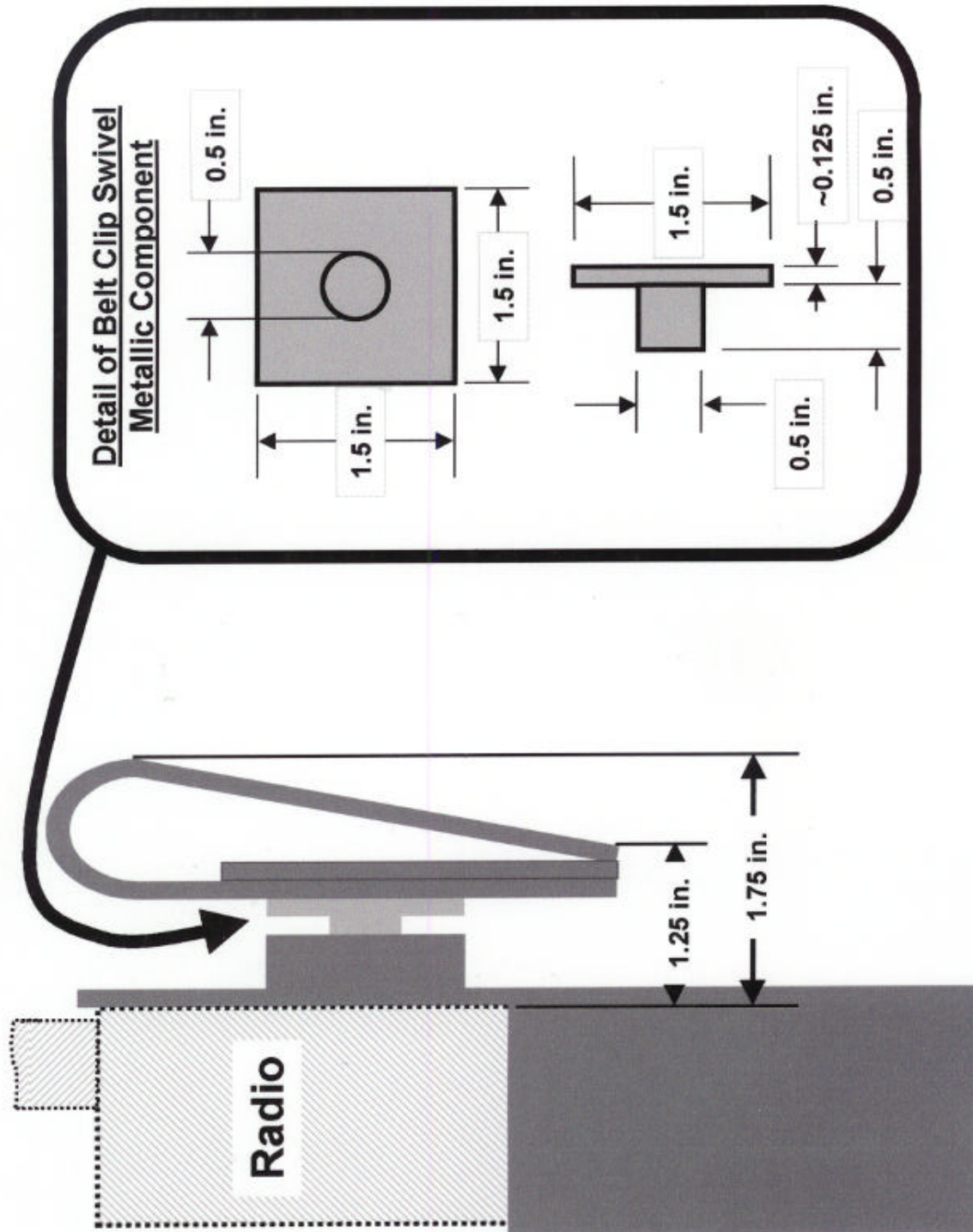


Fig. 5. Detail of belt clip showing spacing and metallic swivel.

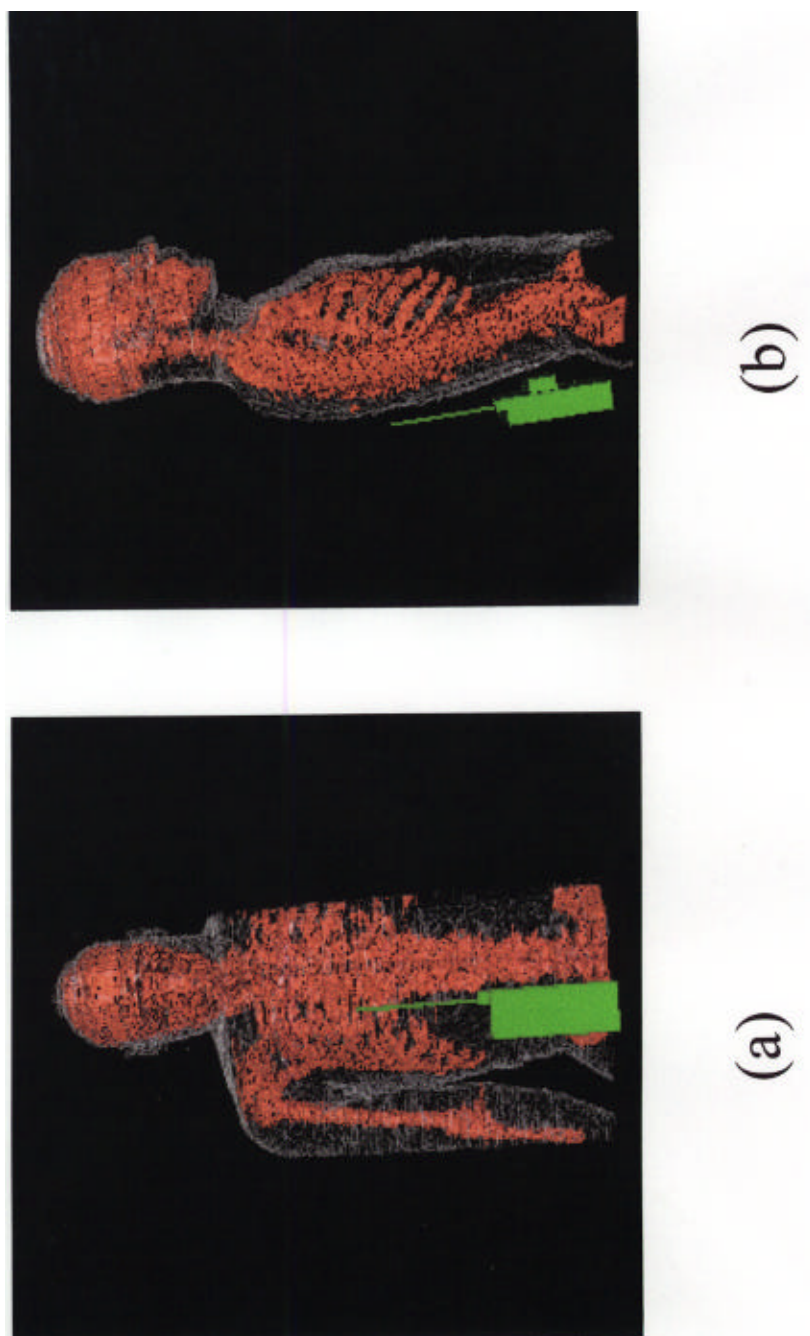


Fig. 6. The M/A-Com Portable Radio P-801T with "half-wave" antenna belt mounted at the waist on the back side.