
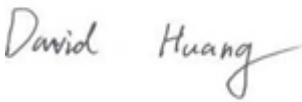



RF TEST REPORT



Report No.: 17071476-FCC-R

Supersede Report No.: N/A

Applicant	Horizon Hobby, LLC	
Product Name	Inductrix	
Main Model	BLH8701	
Serial Model	N/A	
Test Standard	FCC Part 15.249: 2017; ANSI C63.10: 2013	
Test Date	December 28, 2017 to January 18, 2018	
Issue Date	January 19, 2018	
Test Result	<input checked="" type="checkbox"/> Pass <input type="checkbox"/> Fail	
Equipment complied with the specification <input checked="" type="checkbox"/>		
Equipment did not comply with the specification <input type="checkbox"/>		
		
Aarron Liang Test Engineer	David Huang Checked By	
This test report may be reproduced in full only Test result presented in this test report is applicable to the tested sample only		

Issued by:

SIEMIC (SHENZHEN-CHINA) LABORATORIES

Zone A, Floor 1, Building 2 Wan Ye Long Technology Park

South Side of Zhoushi Road, Bao' an District, Shenzhen, Guangdong China 518108

Phone: +86 0755 2601 4629801 Email: China@siemic.com.cn

Laboratories Introduction

SIEMIC, headquartered in the heart of Silicon Valley, with superior facilities in US and Asia, is one of the leading independent testing and certification facilities providing customers with one-stop shop services for Compliance Testing and Global Certifications.



In addition to testing and certification, SIEMIC provides initial design reviews and compliance management throughout a project. Our extensive experience with China, Asia Pacific, North America, European, and International compliance requirements, assures the fastest, most cost effective way to attain regulatory compliance for the global markets.

Accreditations for Conformity Assessment

Country/Region	Scope
USA	EMC, RF/Wireless, SAR, Telecom
Canada	EMC, RF/Wireless, SAR, Telecom
Taiwan	EMC, RF, Telecom, SAR, Safety
Hong Kong	RF/Wireless, SAR, Telecom
Australia	EMC, RF, Telecom, SAR, Safety
Korea	EMI, EMS, RF, SAR, Telecom, Safety
Japan	EMI, RF/Wireless, SAR, Telecom
Singapore	EMC, RF, SAR, Telecom
Europe	EMC, RF, SAR, Telecom, Safety

Test Report No.	17071476-FCC-R
Page	3 of 39

This page has been left blank intentionally.

CONTENTS

1. REPORT REVISION HISTORY	5
2. CUSTOMER INFORMATION	5
3. TEST SITE INFORMATION	5
4. EQUIPMENT UNDER TEST (EUT) INFORMATION	6
5. TEST SUMMARY	7
6. MEASUREMENTS, EXAMINATION AND DERIVED RESULTS	8
6.1 ANTENNA REQUIREMENT	8
6.2 AC LINE CONDUCTED EMISSIONS	9
6.3 RADIATED SPURIOUS EMISSIONS	11
6.4 FIELD STRENGTH MEASUREMENT	19
6.5 20DB BANDWIDTH TESTING	21
6.6 BAND EDGE	23
ANNEX A. TEST INSTRUMENT	27
ANNEX B. EUT AND TEST SETUP PHOTOGRAPHS	28
ANNEX C. TEST SETUP AND SUPPORTING EQUIPMENT	36
ANNEX D. USER MANUAL / BLOCK DIAGRAM / SCHEMATICS / PARTLIST	38
ANNEX E. DECLARATION OF SIMILARITY	39

1. Report Revision History

Report No.	Report Version	Description	Issue Date
17071476-FCC-R	NONE	Original	January 19, 2018

2. Customer information

Applicant Name	Horizon Hobby, LLC
Applicant Add	4105 Fieldstone Road, Champaign, IL 61822, USA
Manufacturer	Yuneec International(China) Co., Ltd
Manufacturer Add	No.388 East Zhengwei Road, Jinxi Town, Kunshan, Jiangsu, 215324, China

3. Test site information

Test Lab A:

Lab performing tests	SIEMIC (Shenzhen-China) LABORATORIES
Lab Address	Zone A, Floor 1, Building 2 Wan Ye Long Technology Park South Side of Zhoushi Road, Bao' an District, Shenzhen, Guangdong China 518108
FCC Test Site No.	535293
IC Test Site No.	4842E-1
Test Software	Radiated Emission Program-To Shenzhen v2.0

Test Lab B:

Lab performing tests	SIEMIC (Nanjing-China) Laboratories
Lab Address	2-1 Longcang Avenue Yuhua Economic and Technology Development Park, Nanjing, China
FCC Test Site No.	694825
IC Test Site No.	4842B-1
Test Software	EZ_EMG(ver.lcp-03A1)

Note: We just perform Radiated Spurious Emission above 18GHz in the test Lab. B.

4. Equipment under Test (EUT) Information

Description of EUT:	Inductrix
Main Model:	BLH8701
Serial Model:	N/A
Date EUT received:	December 27, 2017
Test Date(s):	December 28, 2017 to January 18, 2018
Antenna Gain:	1dBi
Antenna Type:	monopole antenna
Power:	83.64dBuV/m
Type of Modulation:	GFSK
RF Operating Frequency (ies):	2404-2476MHz
Number of Channels:	23CH
Input Power:	Battery Spec: 3.7V, 150mAh
Trade Name :	N/A
FCC ID:	BRWBLH8701

5. Test Summary

The product was tested in accordance with the following specifications.

All testing has been performed according to below product classification:

FCC Rules	Description of Test	Result
§15.203	Antenna Requirement	Compliance
§15.207(a)	AC Line Conducted Emissions	N/A
§15.205, §15.209, §15.249(a), §15.249(d)	Radiated Fundamental / Radiated Spurious Emissions	Compliance
§15.249(a)	Field Strength Measurement	Compliance
§15.249©	20 dB Bandwidth	Compliance
§15.249(d)	Band Edge	Compliance

Measurement Uncertainty

Emissions		
Test Item	Description	Uncertainty
Band Edge and Radiated Spurious Emissions	Confidence level of approximately 95% (in the case where distributions are normal), with a coverage factor of 2 (for EUTs < 0.5m X 0.5m X 0.5m)	+5.6dB/-4.5dB
-	-	-

6. MEASUREMENTS, EXAMINATION AND DERIVED RESULTS

6.1 Antenna Requirement

Standard Requirement:

According to § 15.203, an intentional radiator shall be designed to ensure that no antenna other than that furnished by the responsible party shall be used with the device. The use of a permanently attached antenna or of an antenna that uses a unique coupling to the intentional radiator shall be considered sufficient to comply with the provisions of this section. The manufacturer may design the unit so that a broken antenna can be replaced by the user, but the user of a standard antenna jack or electrical connector is prohibited. The structure and application of the EUT were analyzed to determine compliance with section §15.203 of the rules. §15.203 state that the subject device must meet the following criteria:

- a. Antenna must be permanently attached to the unit.
- b. Antenna must use a unique type of connector to attach to the EUT.
- c. Unit must be professionally installed, and installer shall be responsible for verifying that the correct antenna is employed with the unit.


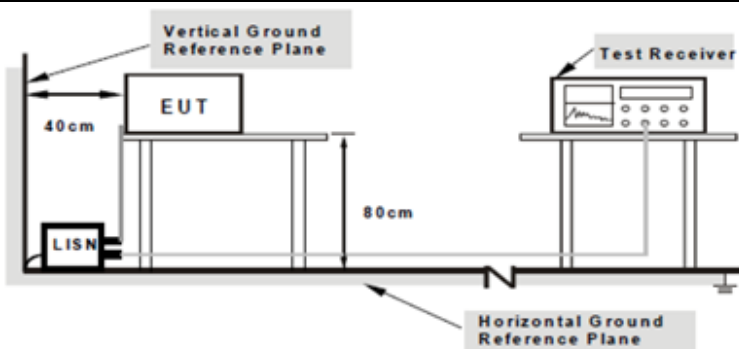
Antenna Connector Construction

A permanently attached monopole antenna, the gain is 1dBi.

Test Result: Pass

6.2 AC Line Conducted Emissions

Temperature	----
Relative Humidity	----
Atmospheric Pressure	----
Test date :	----
Tested By :	----

Spec	Item	Requirement	Applicable														
§15.207	a)	For Low-power radio-frequency devices that is designed to be connected to the public utility (AC) power line, the radio frequency voltage that is conducted back onto the AC power line on any frequency or frequencies, within the band 150 kHz to 30 MHz, shall not exceed the limits in the following table, as measured using a 50 [mu]H/50 ohms line impedance stabilization network (LISN). The lower limit applies at the boundary between the frequencies ranges.															
		<table><tr><th rowspan="2">Frequency ranges (MHz)</th><th colspan="2">Limit (dBµV)</th></tr><tr><th>QP</th><th>Average</th></tr><tr><td>0.15 ~ 0.5</td><td>66 – 56</td><td>56 – 46</td></tr><tr><td>0.5 ~ 5</td><td>56</td><td>46</td></tr><tr><td>5 ~ 30</td><td>60</td><td>50</td></tr></table>		Frequency ranges (MHz)	Limit (dBµV)		QP	Average	0.15 ~ 0.5	66 – 56	56 – 46	0.5 ~ 5	56	46	5 ~ 30	60	50
		Frequency ranges (MHz)			Limit (dBµV)												
				QP	Average												
		0.15 ~ 0.5		66 – 56	56 – 46												
0.5 ~ 5	56	46															
5 ~ 30	60	50															
Test Setup		 <p>Note: 1.Support units were connected to second LISN. 2.Both of LISNs (AMN) are 80cm from EUT and at least 80cm from other units and other metal planes support units.</p>															
Procedure		<ol style="list-style-type: none">1. The EUT and supporting equipment were set up in accordance with the requirements of the standard on top of a 1.5m x 1m x 0.8m high, non-metallic table.2. The power supply for the EUT was fed through a 50W/50mH EUT LISN, connected to filtered mains.3. The RF OUT of the EUT LISN was connected to the EMI test receiver via a low-loss coaxial cable.															

Test Report No.	17071476-FCC-R
Page	10 of 39

	<p>4. All other supporting equipment were powered separately from another main supply.</p> <p>5. The EUT was switched on and allowed to warm up to its normal operating condition.</p> <p>6. A scan was made on the NEUTRAL line (for AC mains) or Earth line (for DC power) over the required frequency range using an EMI test receiver.</p> <p>7. High peaks, relative to the limit line, The EMI test receiver was then tuned to the selected frequencies and the necessary measurements made with a receiver bandwidth setting of 10 kHz.</p> <p>8. Step 7 was then repeated for the LIVE line (for AC mains) or DC line (for DC power).</p>
Remark	The EUT is powered by battery.
Result	<input type="checkbox"/> Pass <input type="checkbox"/> Fail <input checked="" type="checkbox"/> N/A


Test Data ☐ Yes ☒ N/A

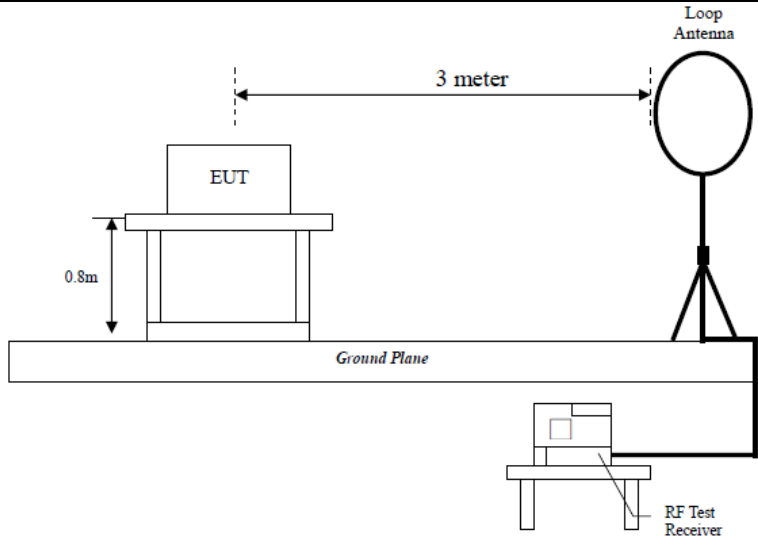
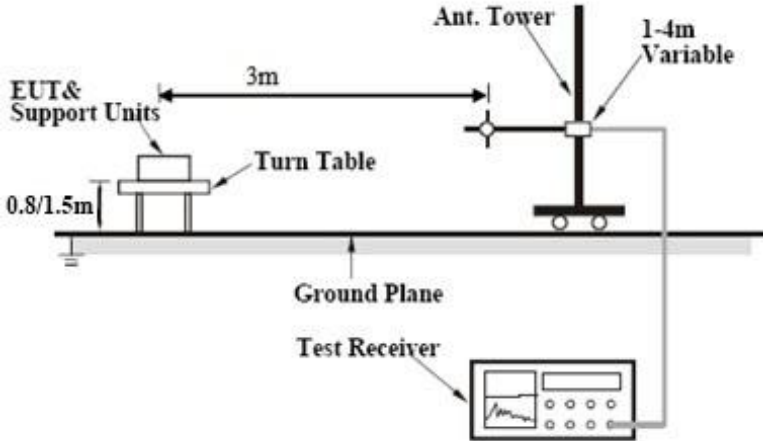
Test Plot ☐ Yes (See below) ☒ N/A

6.3 Radiated Spurious Emissions

Temperature	22°C
Relative Humidity	53%
Atmospheric Pressure	1008mbar
Test date :	January 02, 2018
Tested By :	Aarron Liang

Requirement(s):

Spec	Requirement	Applicable																
§15.209, §15.205, §15.249(a) & §15.249(d)	The emissions from the Low-power radio-frequency devices shall not exceed the field strength levels specified in the following table and the level of any unwanted emissions shall not exceed the level of the fundamental emission. The tighter limit applies at the band edges. The field strength of emissions from intentional radiators operated within these frequency bands shall comply with the following:	<div></div>																
	<table><tr><th>Fundamental frequency</th><th>Field strength of fundamental (millivolts/meter)</th><th>Field strength of harmonics (microvolts/meter)</th></tr><tr><td>902– 928 MHz</td><td>50</td><td>500</td></tr><tr><td>2400– 2483.5 MHz</td><td>50</td><td>500</td></tr><tr><td>5725– 5875 MHz</td><td>50</td><td>500</td></tr><tr><td>24.0– 24.25 GHz</td><td>250</td><td>2500</td></tr></table>		Fundamental frequency	Field strength of fundamental (millivolts/meter)	Field strength of harmonics (microvolts/meter)	902– 928 MHz	50	500	2400– 2483.5 MHz	50	500	5725– 5875 MHz	50	500	24.0– 24.25 GHz	250	2500	
	Fundamental frequency		Field strength of fundamental (millivolts/meter)	Field strength of harmonics (microvolts/meter)														
	902– 928 MHz		50	500														
	2400– 2483.5 MHz		50	500														
	5725– 5875 MHz		50	500														
	24.0– 24.25 GHz		250	2500														
	(d) Emissions radiated outside of the specified frequency bands, except for harmonics, shall be attenuated by at least 50 dB below the level of the fundamental or to the general radiated emission limits in §15.209, whichever is the lesser attenuation.																	
	<table><tr><th>Frequency range (MHz)</th><th>Field Strength (µV/m)</th></tr><tr><td>0.009~0.490</td><td>2400/F(KHz)</td></tr><tr><td>0.490~1.705</td><td>24000/F(KHz)</td></tr><tr><td>1.705~30.0</td><td>30</td></tr><tr><td>30 – 88</td><td>100</td></tr><tr><td>88 – 216</td><td>150</td></tr><tr><td>216 960</td><td>200</td></tr><tr><td>Above 960</td><td>500</td></tr></table>		Frequency range (MHz)	Field Strength (µV/m)	0.009~0.490	2400/F(KHz)	0.490~1.705	24000/F(KHz)	1.705~30.0	30	30 – 88	100	88 – 216	150	216 960	200	Above 960	500
	Frequency range (MHz)		Field Strength (µV/m)															
0.009~0.490	2400/F(KHz)																	
0.490~1.705	24000/F(KHz)																	
1.705~30.0	30																	
30 – 88	100																	
88 – 216	150																	
216 960	200																	
Above 960	500																	

<p>Test Setup</p>	 
<p>Procedure</p>	<ul style="list-style-type: none"> - Setup the configuration according to figure 1. Turn on EUT and make sure that it is in normal function - For emission frequencies measured below 1GHz, a pre-scan is performed in a shielded chamber to determine the accurate frequencies of higher emissions will be checked on a open test site. As the same purpose, for emission frequencies measured above 1GHZ, a pre-scan also be performed with a meter measuring distance before final test. - For emission frequencies measured below and above 1GHz, set the spectrum analyzer on a 100kHz and 1MHz resolution bandwidth respectively for each frequency measured in step 2. - The search antenna is to be raised and lowered over a range from 1 to 4m in horizontally polarized orientation. Position the highness when the highest value is indicated on spectrum analyzer, the change the orientation of EUT on the test table over a range from 0 to 360°. With a speed as slow as possible, and keep the azimuth that highest emission is indicated on the spectrum analyzer.

Test Report No.	17071476-FCC-R
Page	13 of 39

	<p>Vary the antenna position again and record the highest value as a final reading.</p> <ul style="list-style-type: none"> - Repeat step 4 until all frequencies need to be measured was complete. - Repeat step5 with search antenna in vertical polarized orientations.
Remark	
Result	<input checked="" type="checkbox"/> Pass <input type="checkbox"/> Fail

Test Data ☒ Yes ☐ N/A
 Test Plot ☒ Yes (See below) ☐ N/A

Test Result:

Test Mode:	Transmitting Mode
------------	-------------------

Frequency range: 9KHz - 30MHz

Freq. (MHz)	Detection value	Factor (dB/m)	Reading (dBuV/m)	Result (dBuV/m)	Limit@3m (dBuV/m)	Margin (dB)
--	--	--	--	--	--	>20
--	--	--	--	--	--	>20

Note:

The amplitude of spurious emissions which are attenuated by more than 20dB below the permissible value has no need to be reported.

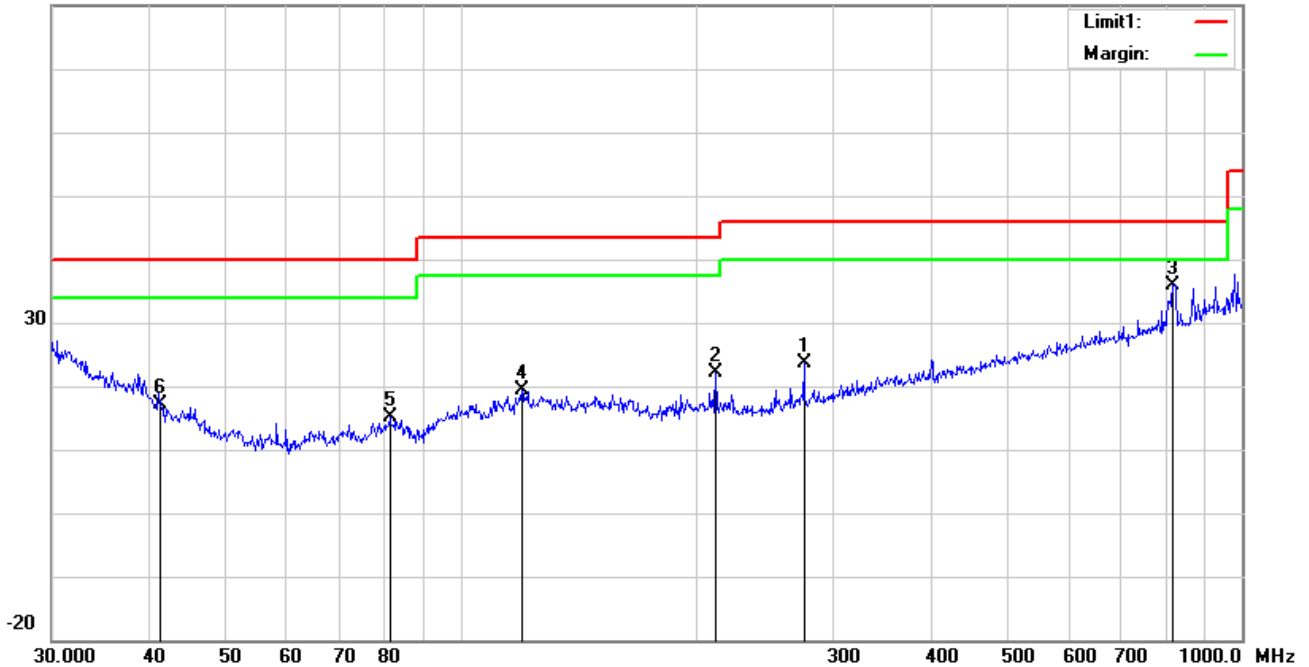
Distance extrapolation factor = $40 \log (\text{specific distance}/\text{test distance})$ (dB);

Limit line = specific limits(dBuv) + distance extrapolation factor.

Test Mode: 2.4G Mode

30MHz -1GHz

80.0 dBuV/m

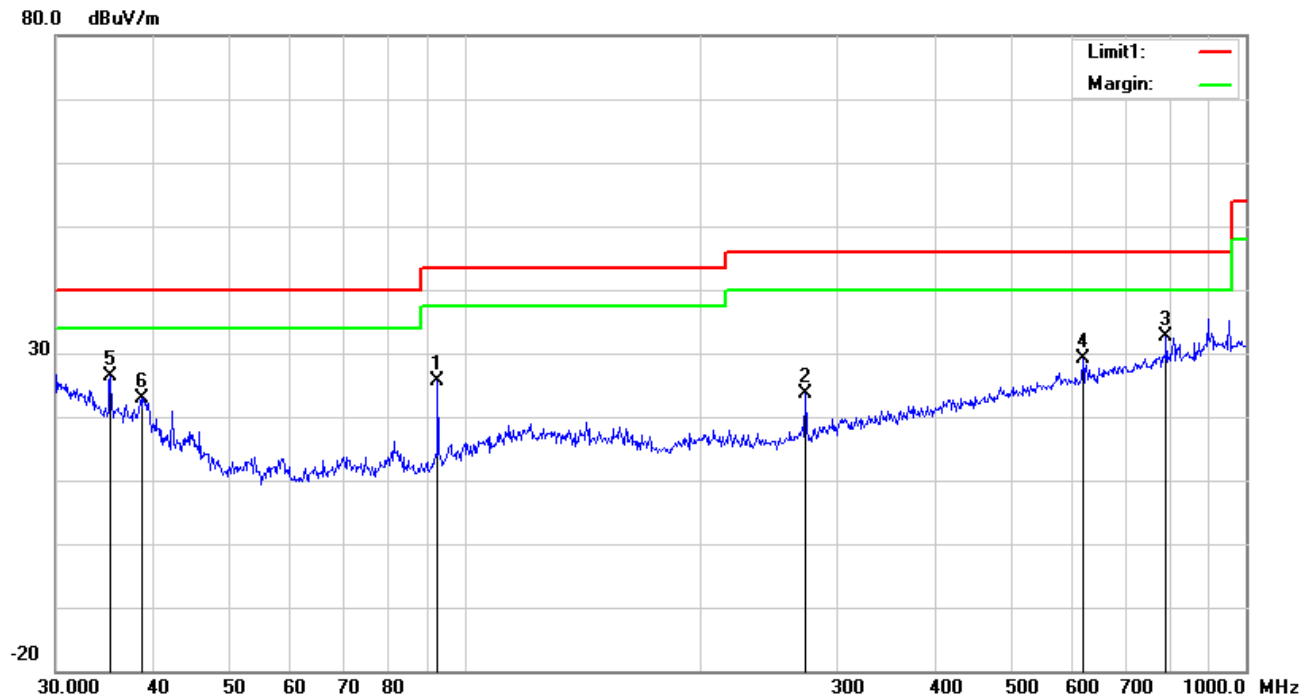


Test Data

Horizontal Polarity Plot @3m

No.	P/L	Frequency	Reading	Detect or	Ant_F	PA_G	Cab_L	Result	Limit	Margin	Height	Degr ee
		(MHz)	(dBuV/m)		(dB/m)	(dB)	(dB)	(dBuV/m)	(dBuV/m)	(dB)	(cm)	(°)
1	H	275.1570	31.54	peak	12.51	22.29	1.75	23.51	46.00	-22.49	200	292
2	H	212.2695	31.07	peak	11.93	22.36	1.58	22.22	43.50	-21.28	100	259
3	H	815.9678	32.55	peak	21.58	21.11	2.93	35.95	46.00	-10.05	100	211
4	H	119.8556	26.79	peak	13.87	22.36	1.16	19.46	43.50	-24.04	100	171
5	H	81.2117	28.85	peak	7.65	22.41	1.05	15.14	40.00	-24.86	100	190
6	H	41.2765	25.57	peak	13.06	22.28	0.78	17.13	40.00	-22.87	100	105

30MHz -1GHz



Test Data

Vertical Polarity Plot @3m

No.	P/L	Frequency	Reading	Detect or	Ant_F	PA_G	Cab_L	Result	Limit	Margin	Height	Degr ee
		(MHz)	(dBuV/m)		(dB/m)	(dB)	(dB)	(dBuV/m)	(dBuV/m)	(dB)	(cm)	(°)
1	V	92.4624	38.34	peak	8.59	22.32	0.97	25.58	43.50	-17.92	100	232
2	V	273.2341	31.84	peak	12.42	22.29	1.74	23.71	46.00	-22.29	100	349
3	V	790.6188	29.56	peak	21.29	21.17	2.94	32.62	46.00	-13.38	100	340
4	V	618.5369	28.78	peak	19.30	21.54	2.54	29.08	46.00	-16.92	100	18
5	V	35.2512	30.48	peak	17.37	22.25	0.76	26.36	40.00	-13.64	100	342
6	V	38.7518	29.65	peak	14.81	22.27	0.78	22.97	40.00	-17.03	100	208

Above 1GHz

Test Mode:	2.4G Mode
-------------------	------------------

Low Channel: 2404 MHz

Frequency (MHz)	S.A. Reading (dBμV)	Detector (PK/AV)	Polarity (H/V)	Ant. Factor (dB/m)	Cable Loss (dB)	Pre-Amp. Gain (dB)	Cord. Amp. (dBμV/m)	Limit (dBμV/m)	Margin (dB)
4808	43.2	AV	V	33.39	7.22	48.46	35.35	54	-18.65
4808	43.73	AV	H	33.39	7.22	48.46	35.88	54	-18.12
4808	69.58	PK	V	33.39	7.22	48.46	61.73	74	-12.27
4808	64.06	PK	H	33.39	7.22	48.46	56.21	74	-17.79
12717	31.29	AV	V	39.81	12.69	46.18	37.61	54	-16.39
12717	29.83	AV	H	39.81	12.69	46.18	36.15	54	-17.85
12717	53.46	PK	V	39.81	12.69	46.18	59.78	74	-14.22
12717	49.38	PK	H	39.81	12.69	46.18	55.7	74	-18.3

Middle Channel: 2440 MHz

Frequency (MHz)	S.A. Reading (dBμV)	Detector (PK/AV)	Polarity (H/V)	Ant. Factor (dB/m)	Cable Loss (dB)	Pre-Amp. Gain (dB)	Cord. Amp. (dBμV/m)	Limit (dBμV/m)	Margin (dB)
4880	48.76	AV	V	33.62	7.53	48.36	41.55	54	-12.45
4880	47.6	AV	H	33.62	7.53	48.36	40.39	54	-13.61
4880	70.71	PK	V	33.62	7.53	48.36	63.5	74	-10.5
4880	62.35	PK	H	33.62	7.53	48.36	55.14	74	-18.86
11972	29.56	AV	V	39.92	13.32	46.22	36.58	54	-17.42
11972	27.35	AV	H	39.92	13.32	46.22	34.37	54	-19.63
11972	51.66	PK	V	39.92	13.32	46.22	58.68	74	-15.32
11972	47.74	PK	H	39.92	13.32	46.22	54.76	74	-19.24

High Channel: 2476 MHz

Frequency (MHz)	S.A. Reading (dBμV)	Detector (PK/AV)	Polarity (H/V)	Ant. Factor (dB/m)	Cable Loss (dB)	Pre-Amp. Gain (dB)	Cord. Amp. (dBμV/m)	Limit (dBμV/m)	Margin (dB)
4952	49.66	AV	V	33.7	7.46	48.6	42.22	54	-11.78
4952	42.36	AV	H	33.7	7.46	48.6	34.92	54	-19.08
4952	68.47	PK	V	33.7	7.46	48.6	61.03	74	-12.97
4952	64.29	PK	H	33.7	7.46	48.6	56.85	74	-17.15
17785	19.99	AV	V	43.79	19.81	43.47	40.12	54	-13.88
17785	19.66	AV	H	43.79	19.81	43.47	39.79	54	-14.21
17785	39.84	PK	V	43.79	19.81	43.47	59.97	74	-14.03
17785	38.11	PK	H	43.79	19.81	43.47	58.24	74	-15.76

Note:

1, The testing has been conformed to $10 \times 2476 \text{ MHz} = 24,760 \text{ MHz}$

2, All other emissions more than 30 dB below the limit

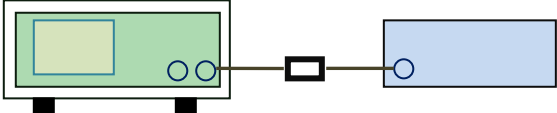
3, X-Axis, Y-Axis and Z-Axis were investigated. The results above show only the worst case.

4, The radiated spurious test above 18GHz is subcontracted to SIEMIC (Nanjing-China) Laboratories. and found 30dB below the limit at least.

6.4 Field Strength Measurement

Temperature	22°C
Relative Humidity	53%
Atmospheric Pressure	1008mbar
Test date :	January 02, 2018
Tested By :	Aarron Liang

Requirement(s):

Spec	Requirement	Applicable															
§15.249(a)	<table border="1"> <thead> <tr> <th>Fundamental frequency</th><th>Field strength of fundamental (millivolts/ meter)</th><th>Field strength of harmonics (microvolts/ meter)</th></tr> </thead> <tbody> <tr> <td>902–928 MHz</td><td>50</td><td>500</td></tr> <tr> <td>2400–2483.5 MHz</td><td>50</td><td>500</td></tr> <tr> <td>5725–5875 MHz</td><td>50</td><td>500</td></tr> <tr> <td>24.0–24.25 GHz</td><td>250</td><td>2500</td></tr> </tbody> </table>	Fundamental frequency	Field strength of fundamental (millivolts/ meter)	Field strength of harmonics (microvolts/ meter)	902–928 MHz	50	500	2400–2483.5 MHz	50	500	5725–5875 MHz	50	500	24.0–24.25 GHz	250	2500	<input checked="" type="checkbox"/>
Fundamental frequency	Field strength of fundamental (millivolts/ meter)	Field strength of harmonics (microvolts/ meter)															
902–928 MHz	50	500															
2400–2483.5 MHz	50	500															
5725–5875 MHz	50	500															
24.0–24.25 GHz	250	2500															
Test Setup	 <p style="text-align: center;">Spectrum Analyzer EUT</p>																
Test Procedure	Emissions radiated outside of the specified frequency bands, except for harmonics, shall be attenuated by at least 50 dB below the level of the fundamental or to the general radiated emission limits in § 15.209, whichever is the lesser attenuation.																
Remark																	
Result	<input checked="" type="checkbox"/> Pass <input type="checkbox"/> Fail																

Test Data ☒ Yes ☐ N/A

Test Plot ☒ Yes (See below) ☐ N/A

Test Mode:	2.4G Mode
-------------------	------------------

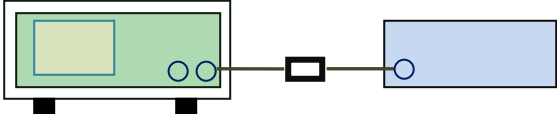
Field Strength Measurement

P/L	Frequency	Reading Level	Correct Factor	Measurement	Limit	Over	Detector
	(MHz)	(dBuV/m)	(dB)	(dBuV/m)	(dB/m)	(dB)	
H	2403.25	89.02	-12.21	76.81	114	-37.19	peak
H	2403.25	72.96	-12.21	60.75	94	-33.25	AVG
V	2403.25	92.09	-12.21	79.88	114	-34.12	peak
V	2403.25	76.42	-12.21	64.21	94	-29.79	AVG
H	2440.73	89.07	-13.8	75.27	114	-38.73	peak
H	2440.73	76.65	-13.8	62.85	94	-31.15	AVG
V	2440.73	91.92	-13.8	78.12	114	-35.88	peak
V	2440.73	76.95	-13.8	63.15	94	-30.85	AVG
H	2475.97	91.53	-13.71	77.82	114	-36.18	peak
H	2475.97	74.26	-13.71	60.55	94	-33.45	AVG
V	2475.97	97.35	-13.71	83.64	114	-30.36	peak
V	2475.97	79.42	-13.71	65.71	94	-28.29	AVG

6.5 20dB Bandwidth Testing

Temperature	22°C
Relative Humidity	53%
Atmospheric Pressure	1008mbar
Test date :	January 02, 2018
Tested By :	Aarron Liang

Requirement(s):

Spec	Item	Requirement	Applicable
§15.215(c)	a)	Radiated Emissions Measurement Uncertainty All test measurements carried out are traceable to national standards. The uncertainty of the measurement at a confidence level of approximately 95% (in the case where distributions are normal), with a coverage factor of 2, in the range 30MHz – 1GHz (3m & 10m) & 1GHz above (3m) is +5.6/-4.5dB.	<input checked="" type="checkbox"/>
Test Setup	 <p style="text-align: center;">Spectrum Analyzer EUT</p>		
Test Procedure	<ul style="list-style-type: none"> - Check the calibration of the measuring instrument using either an internal calibrator or a known signal from an external generator. - Position the EUT on the test table without connection to measurement instrument. Turn on the EUT. Then set it to any one convenient frequency within its operating range. Set a reference level on the measuring instrument equal to the highest peak value. - Measure the frequency difference of two frequencies that were attenuated 20 dB from the reference level. Record the frequency difference as the emission bandwidth. - Repeat above procedures until all frequencies measured were complete. 		
Remark			

Result	<input checked="" type="checkbox"/> Pass	<input type="checkbox"/> Fail
--------	--	-------------------------------

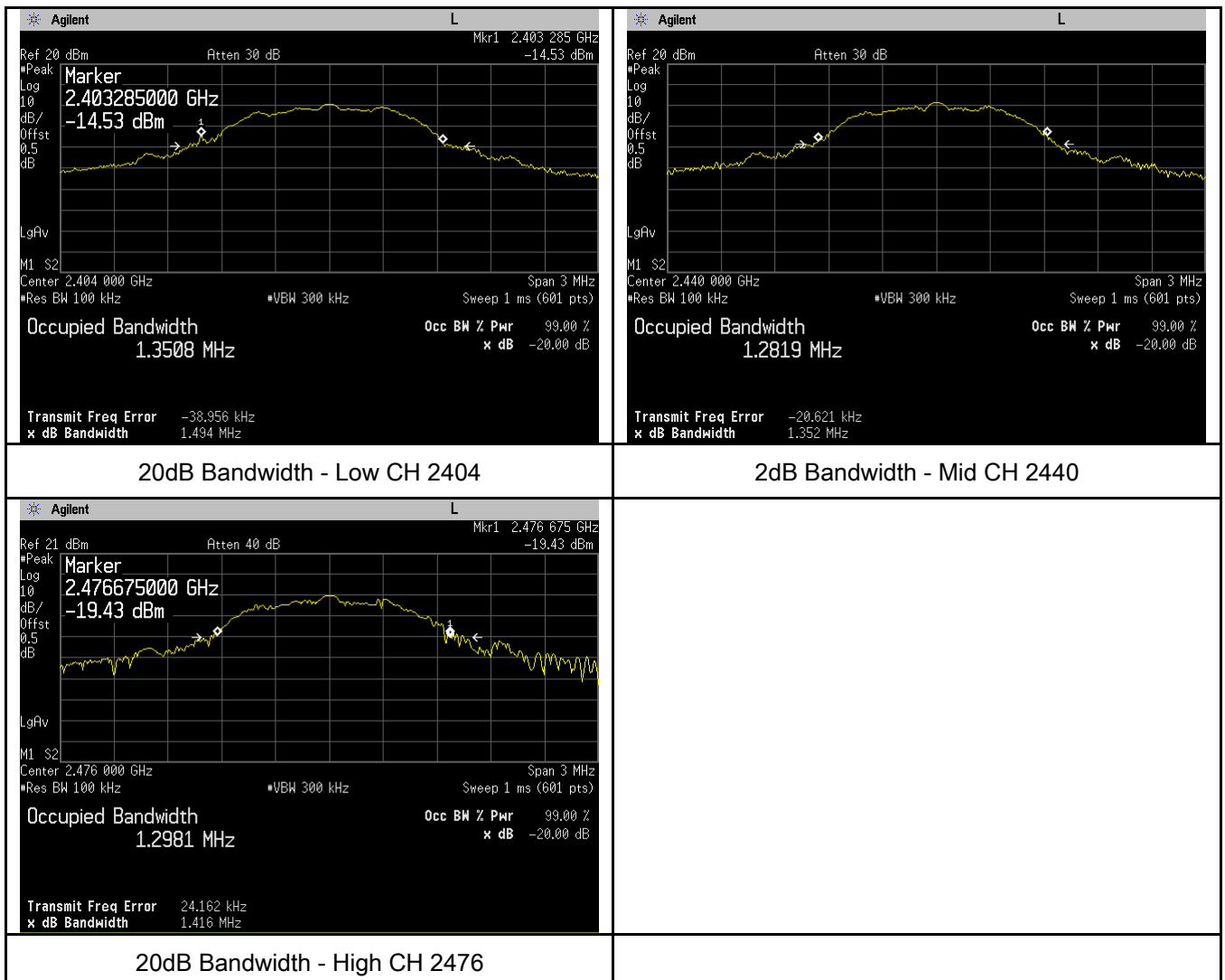
Test Data	<input checked="" type="checkbox"/> Yes	<input type="checkbox"/> N/A
Test Plot	<input checked="" type="checkbox"/> Yes (See below)	<input type="checkbox"/> N/A

20dB Bandwidth measurement result

CH	Fundamental Frequency (MHz)	20dB Bandwidth (MHz)	Result
Low	2404	1.494	Pass
Middle	2440	1.352	Pass
High	2476	1.416	Pass

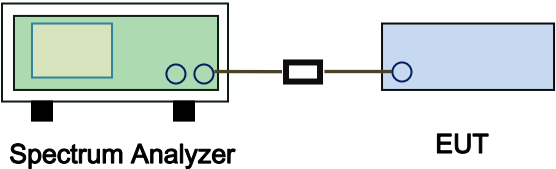
Test Plots

20dB Bandwidth measurement result



6.6 Band Edge

Temperature	22°C
Relative Humidity	53%
Atmospheric Pressure	1008mbar
Test date :	January 02, 2018
Tested By :	Aarron Liang

Spec	Item	Requirement	Applicable
§15.249(d)	a)	Emissions radiated outside of the specified frequency bands, except for harmonics, shall be attenuated by at least 50 dB below the level of the fundamental or to the general radiated emission limits in §15.209, whichever is the lesser attenuation.	<input checked="" type="checkbox"/>
Test Setup	 <p style="text-align: center;">Spectrum Analyzer EUT</p>		
Test Procedure	<ul style="list-style-type: none"> - Check the calibration of the measuring instrument using either an internal calibrator or a known signal from an external generator. - Position the EUT without connection to measurement instrument. Put it on the Rotated table and turn on the EUT and make it operate in transmitting mode. Then set it to Low Channel and High Channel within its operating range, and make sure the instrument is operated in its linear range. - Set both RBW and VBW of spectrum analyzer to 1MHz. - Measure the highest amplitude appearing on spectral display and set it as a reference level. Plot the graph with marking the highest point and edge frequency. - Repeat above procedures until all measured frequencies were complete. 		
Remark			
Result	<input checked="" type="checkbox"/> Pass <input type="checkbox"/> Fail		

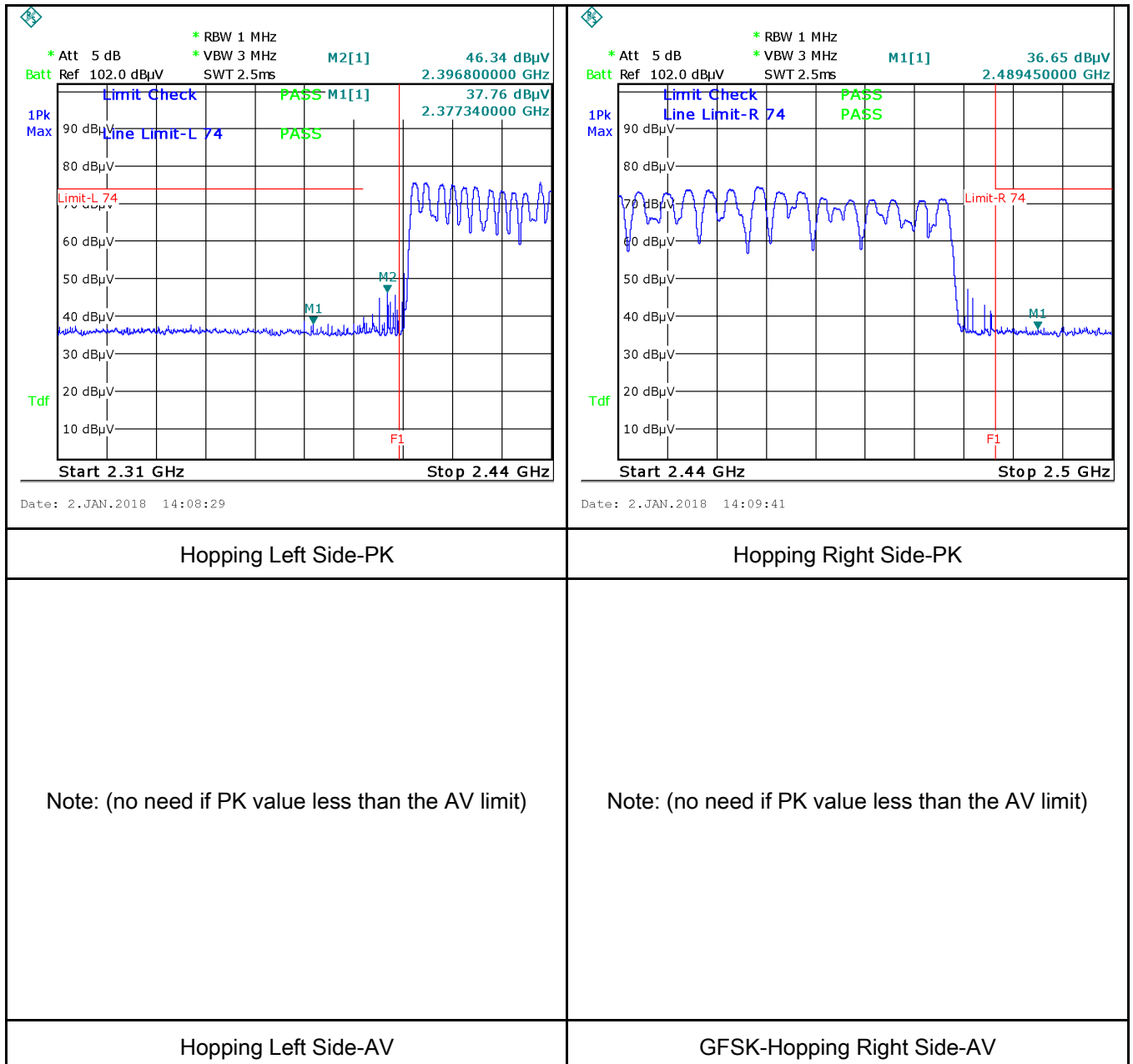
Test Report No.	17071476-FCC-R
Page	24 of 39

Test Data ☒ Yes ☐ N/A

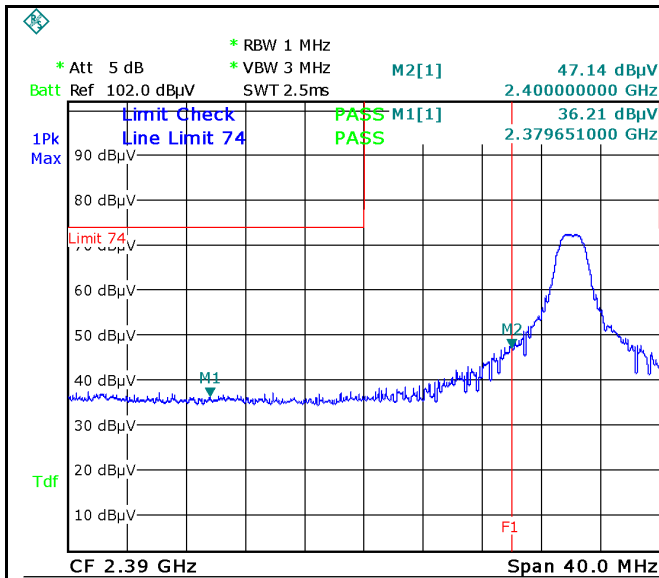
Test Plot ☒ Yes (See below) ☐ N/A

Test Plots

Band Edge measurement result



Note: Both Horizontal and vertical polarities were investigated.

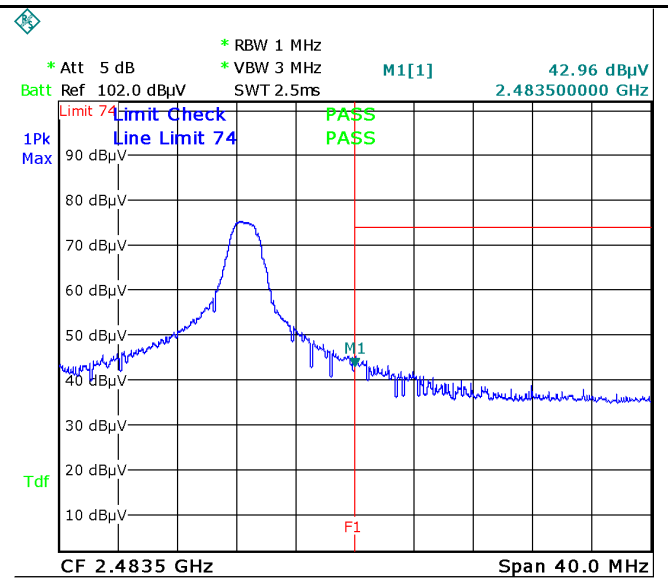


Date: 2.JAN.2018 14:28:40

Left Side-PK

Note: (no need if PK value less than the AV limit)

GFSK-Left Side-AV



Date: 2.JAN.2018 14:33:02

Right Side-PK

Note: (no need if PK value less than the AV limit)

GFSK-Right Side-AV

Note: Both Horizontal and vertical polarities were investigated.

Annex A. TEST INSTRUMENT

Instrument	Model	Serial #	Cal Date	Cal Due	In use
AC Line Conducted					
EMI test receiver	ESCS30	8471241027	09/15/2017	09/14/2018	<input checked="" type="checkbox"/>
Line Impedance	LI-125A	191106	09/23/2017	09/22/2018	<input checked="" type="checkbox"/>
Line Impedance	LI-125A	191107	09/23/2017	09/22/2018	<input checked="" type="checkbox"/>
ISN	ISN T800	34373	09/23/2017	09/22/2018	<input checked="" type="checkbox"/>
Double Ridge Horn Antenna (1 ~18GHz)	AH-118	71283	09/22/2017	09/21/2018	<input checked="" type="checkbox"/>
Transient Limiter	LIT-153	531118	08/30/2017	08/29/2018	<input checked="" type="checkbox"/>
RF conducted test					
Agilent ESA-E SERIES	E4407B	MY45108319	09/15/2017	09/14/2018	<input checked="" type="checkbox"/>
Power Splitter	1#	1#	08/30/2017	08/29/2018	<input checked="" type="checkbox"/>
DC Power Supply	E3640A	MY40004013	09/15/2017	09/14/2018	<input checked="" type="checkbox"/>
Radiated Emissions					
EMI test receiver	ESL6	100262	09/15/2017	09/14/2018	<input checked="" type="checkbox"/>
Positioning Controller	UC3000	MF780208282	11/17/2017	11/16/2018	<input checked="" type="checkbox"/>
OPT 010 AMPLIFIER (0.1-1300MHz)	8447E	2727A02430	08/30/2017	08/29/2018	<input checked="" type="checkbox"/>
Active Antenna (9kHz-30MHz)	AL-130	121031	10/12/2017	10/11/2018	<input checked="" type="checkbox"/>
Microwave Preamplifier (1 ~ 26.5GHz)	8449B	3008A02402	03/23/2017	03/22/2018	<input checked="" type="checkbox"/>
Active Antenna (9kHz-30MHz)	AL-130	121031	10/12/2017	10/11/2018	<input checked="" type="checkbox"/>
Bilog Antenna (30MHz~6GHz)	JB6	A110712	09/19/2017	09/18/2018	<input checked="" type="checkbox"/>
Double Ridge Horn Antenna (1 ~18GHz)	AH-118	71283	09/22/2017	09/21/2018	<input checked="" type="checkbox"/>
Universal Radio Communication Tester	CMU200	121393	09/23/2017	09/22/2018	<input checked="" type="checkbox"/>

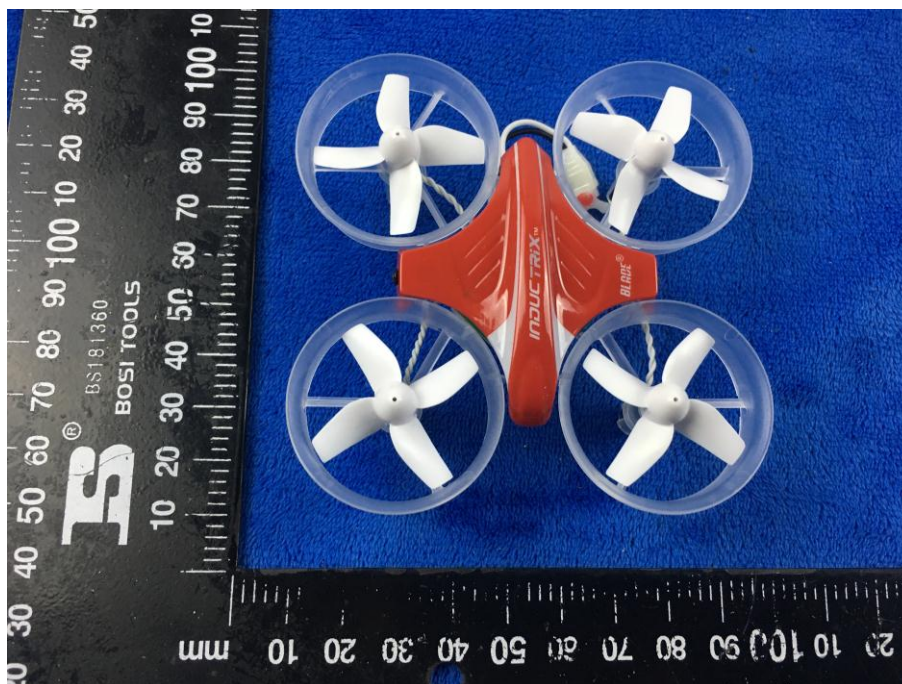
Annex B. EUT And Test Setup Photographs

Annex B.i. Photograph: EUT External Photo

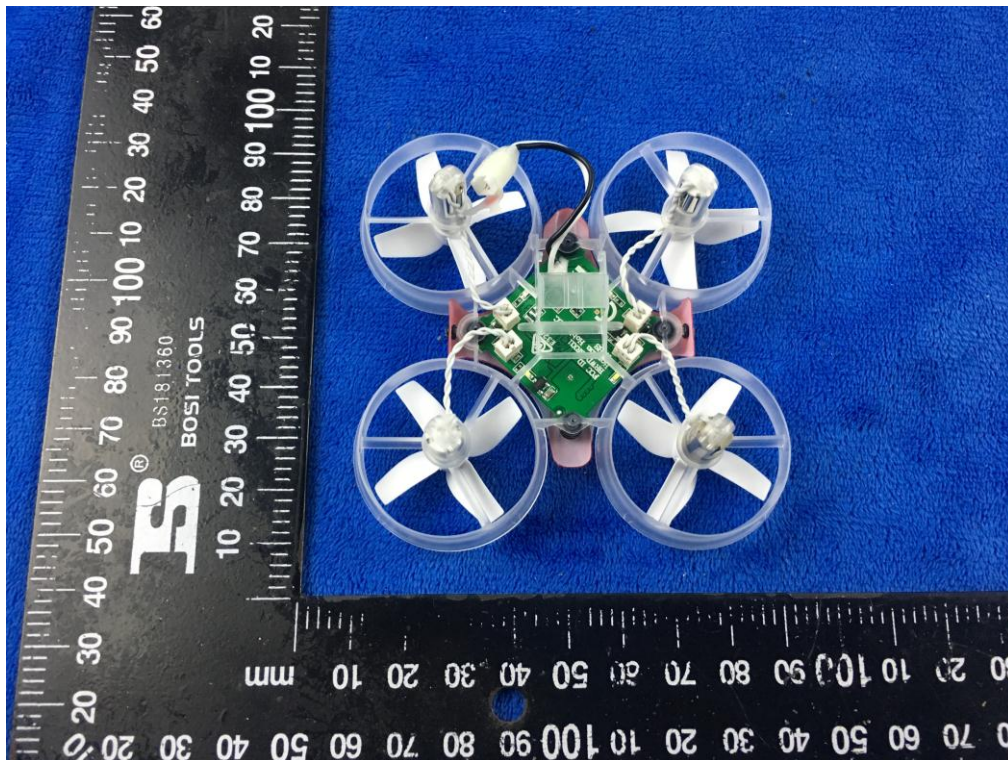
Whole Package View



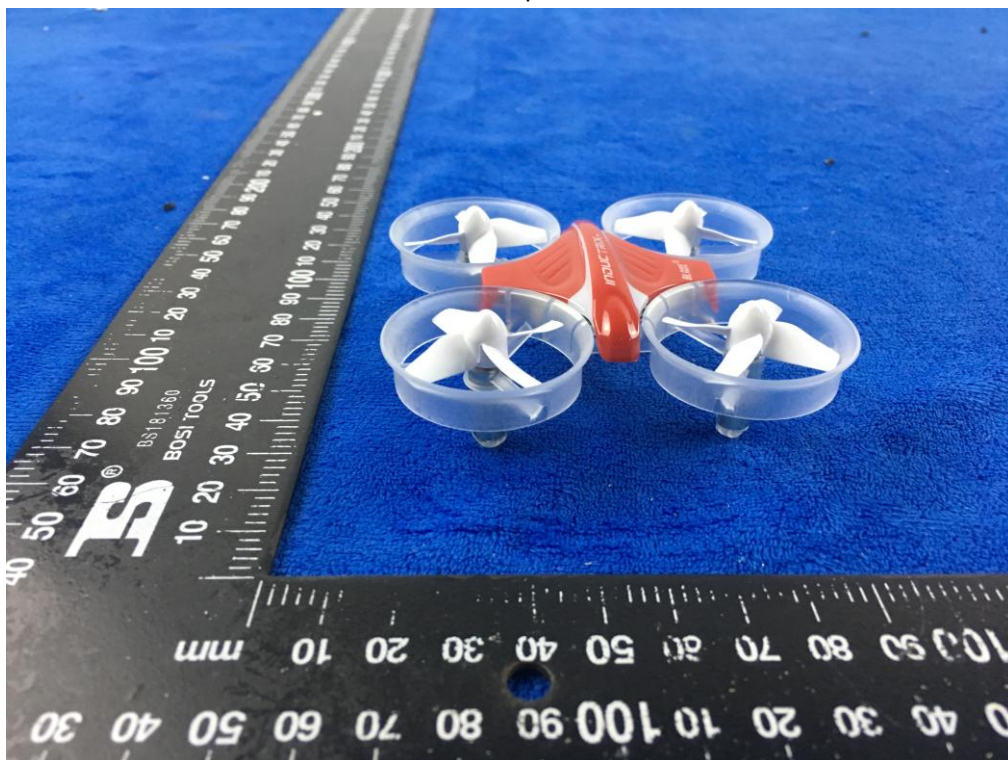
EUT - Front View



EUT - Rear View



EUT - Top View



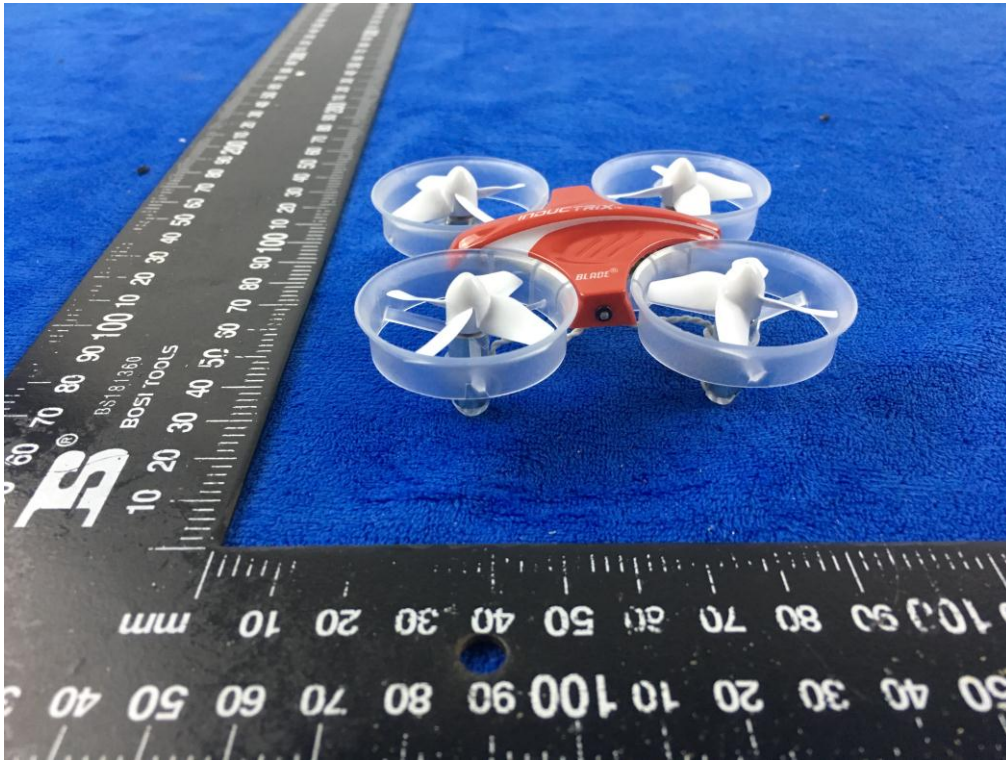
EUT - Bottom View



EUT - Left View



EUT - Right View

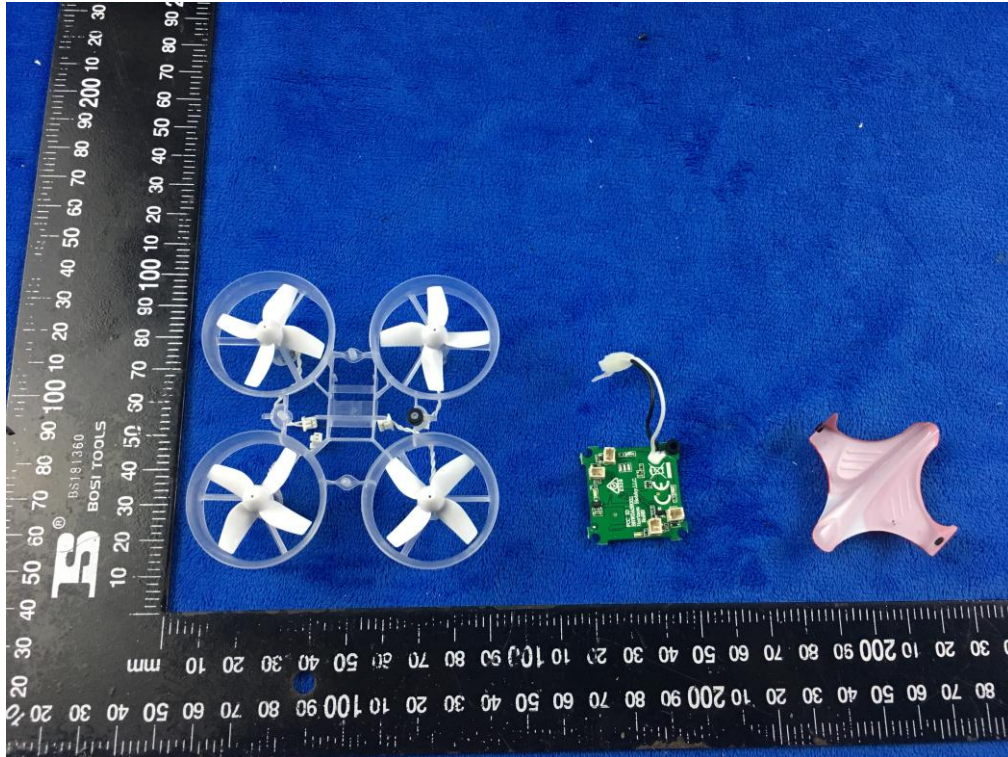


Label View

Inductrix
BLH8701
FCC ID: BRWBLH8701
IC:6157A-BLH8701

Annex B.ii. Photograph: EUT Internal Photo

Cover Off - Top View



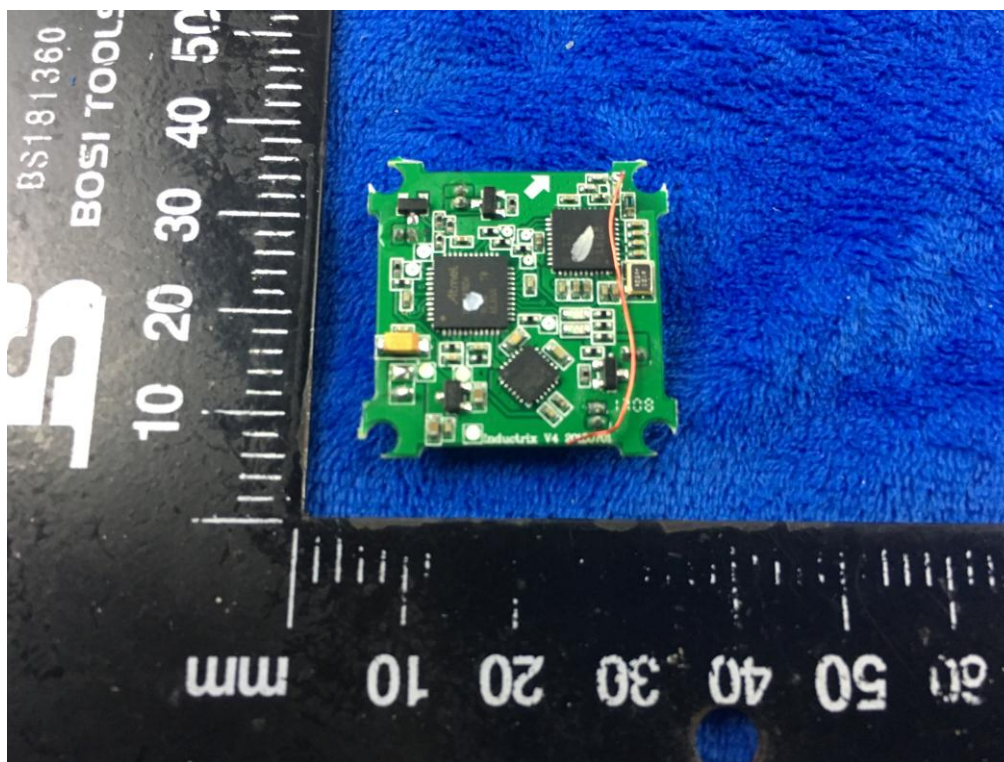
Battery - Front View



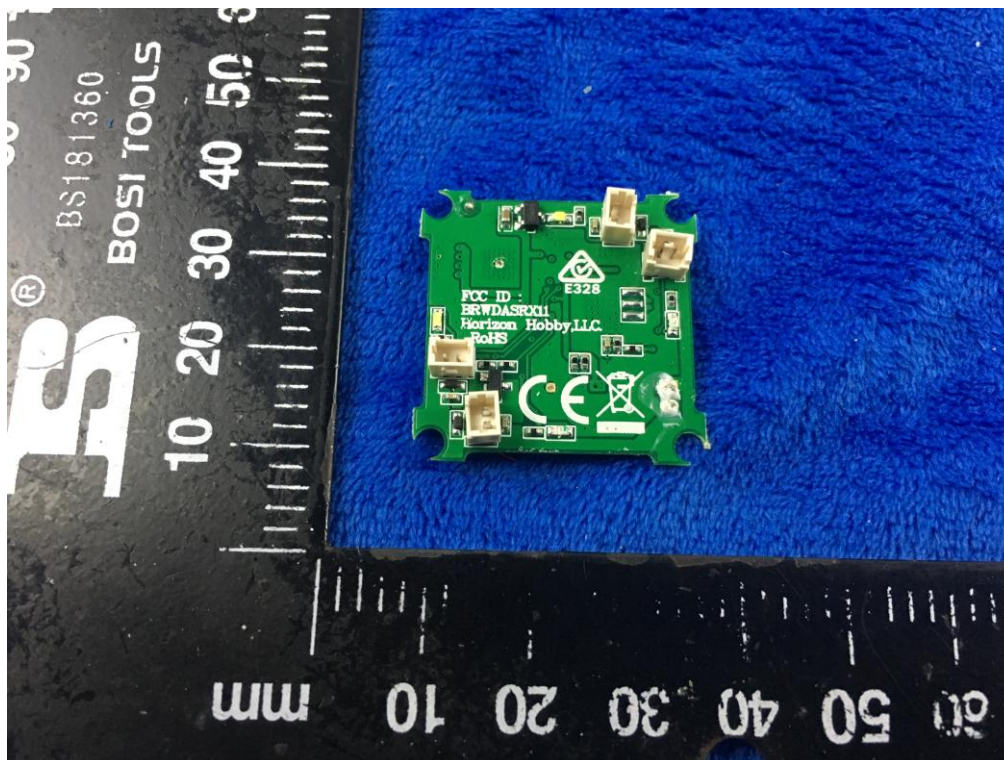
Battery - Rear View



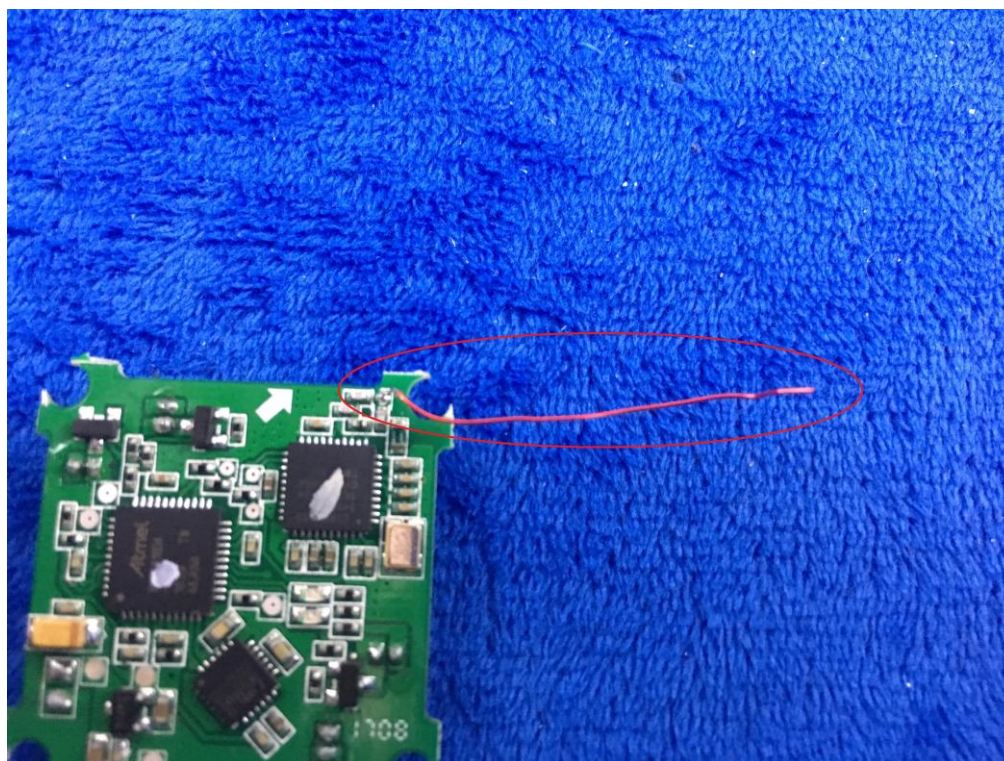
Mainboard - Front View



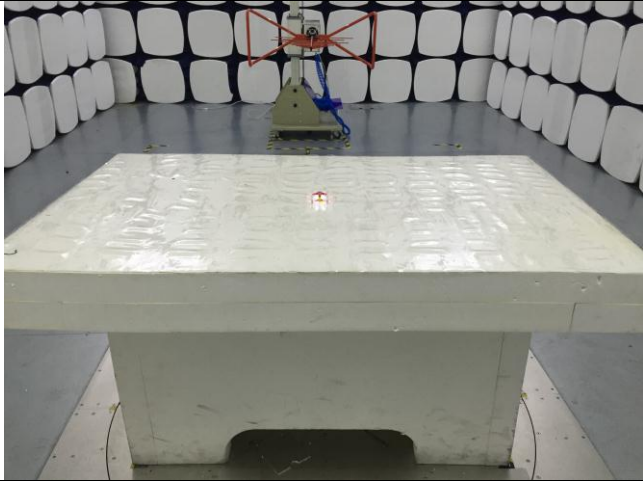
Mainboard – Rear View



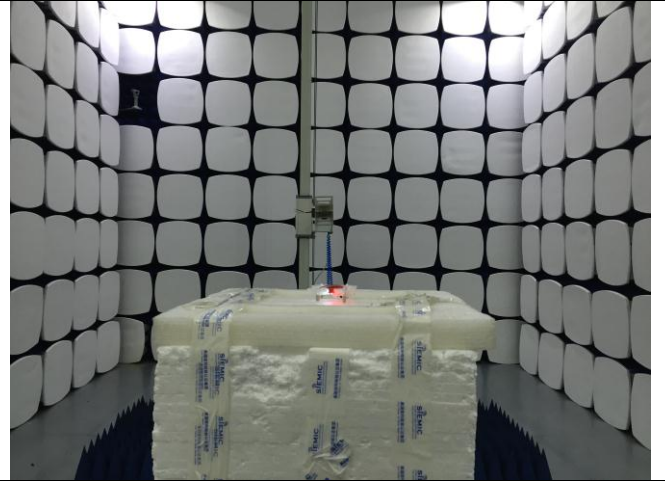
Antenna View



Annex B.iii. Photograph: Test Setup Photo



Radiated Spurious Emissions Test Setup Below 1GHz

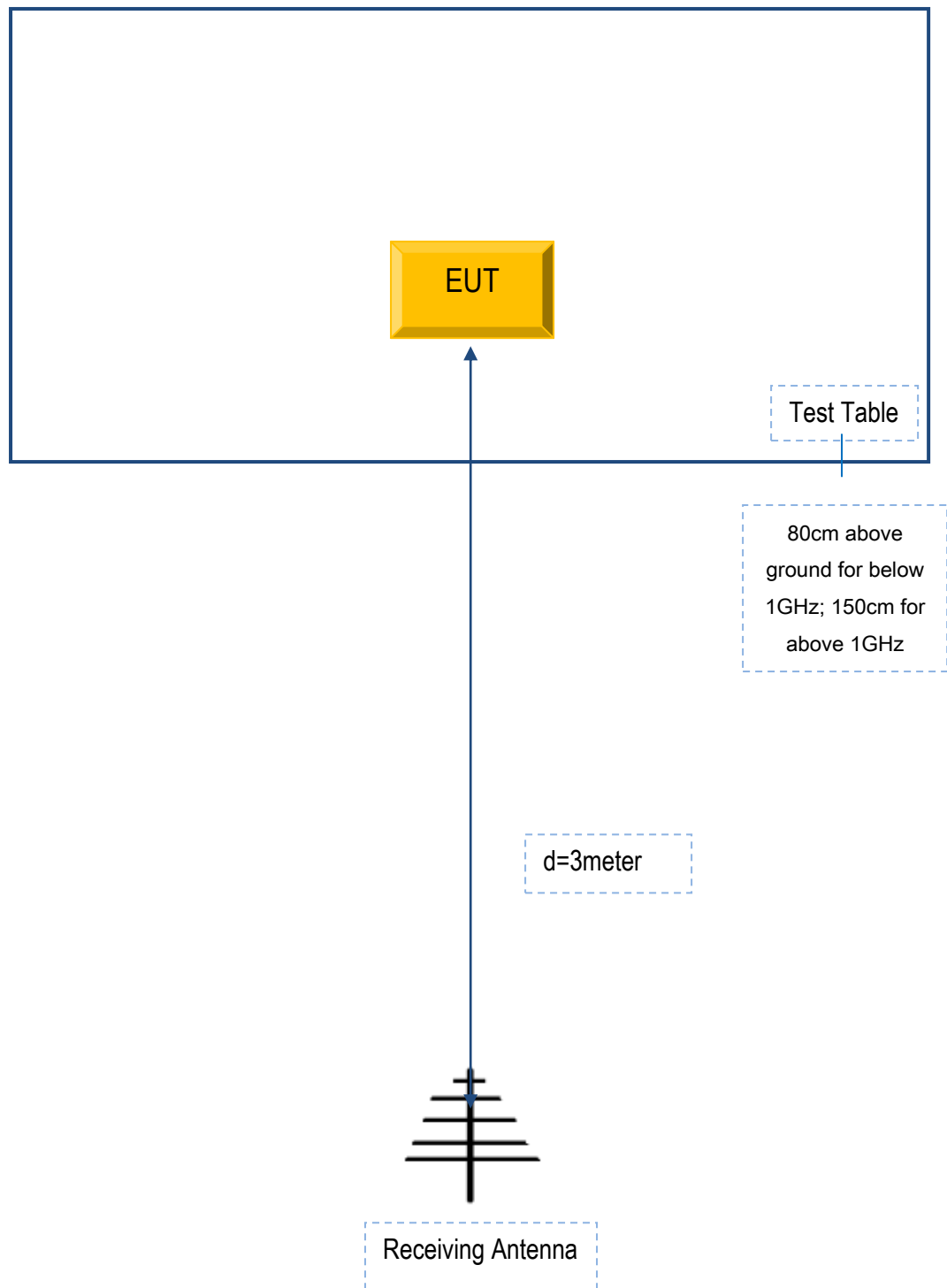


Radiated Spurious Emissions Test Setup Above
1GHz

Annex C. TEST SETUP AND SUPPORTING EQUIPMENT

Annex C.ii. TEST SET UP BLOCK

Block Configuration Diagram for Radiated Emissions



Annex C. ii. SUPPORTING EQUIPMENT DESCRIPTION

The following is a description of supporting equipment and details of cables used with the EUT.

Manufacturer	Equipment Description	Model	Serial No.
N/A	N/A	N/A	N/A

Test Report No.	17071476-FCC-R
Page	38 of 39

Annex D. User Manual / Block Diagram / Schematics / Partlist

Please see attachment

Annex E. DECLARATION OF SIMILARITY

N/A