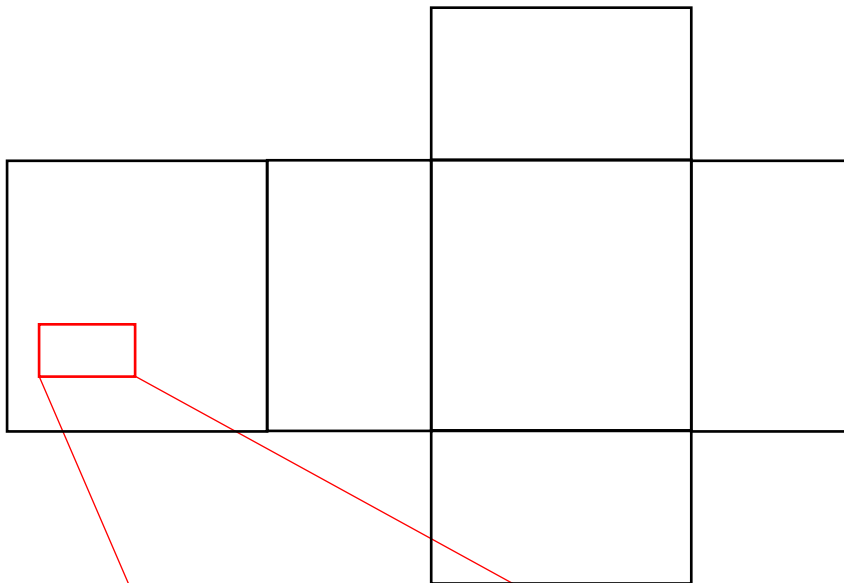


Note:

This content can be viewed on the package.

- Package expansion diagram



This device complies with part 15 of FCC Rules and ISED's licence-exempt RSSs. Operation is subject to the following two conditions: (1) this device may not cause harmful interference, and (2) this device must accept any interference received, including interference that may cause undesired operation. For FCC information, visit: [support.nintendo.com/fcc-ised](https://support.nintendo.com/fcc-ised)