

6

6

6

6

6

6

6

6

6

6

6

6

6

6

6

6

6

6

6

6

6

6

6

P.R. App'd:
NO. 339 TC

NOM 46-1042/1044

© 1995 THE STANLEY WORKS

Flexible Stainless Steel

3

4

5

6

7

8

9

10

11

20

21

22

23

24

25

26

27

28

29

30

31

32

33

34

35

36

37

38

39

40

41

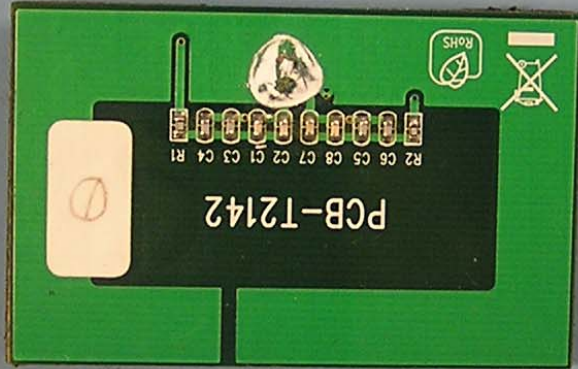
42

43

44

45

46

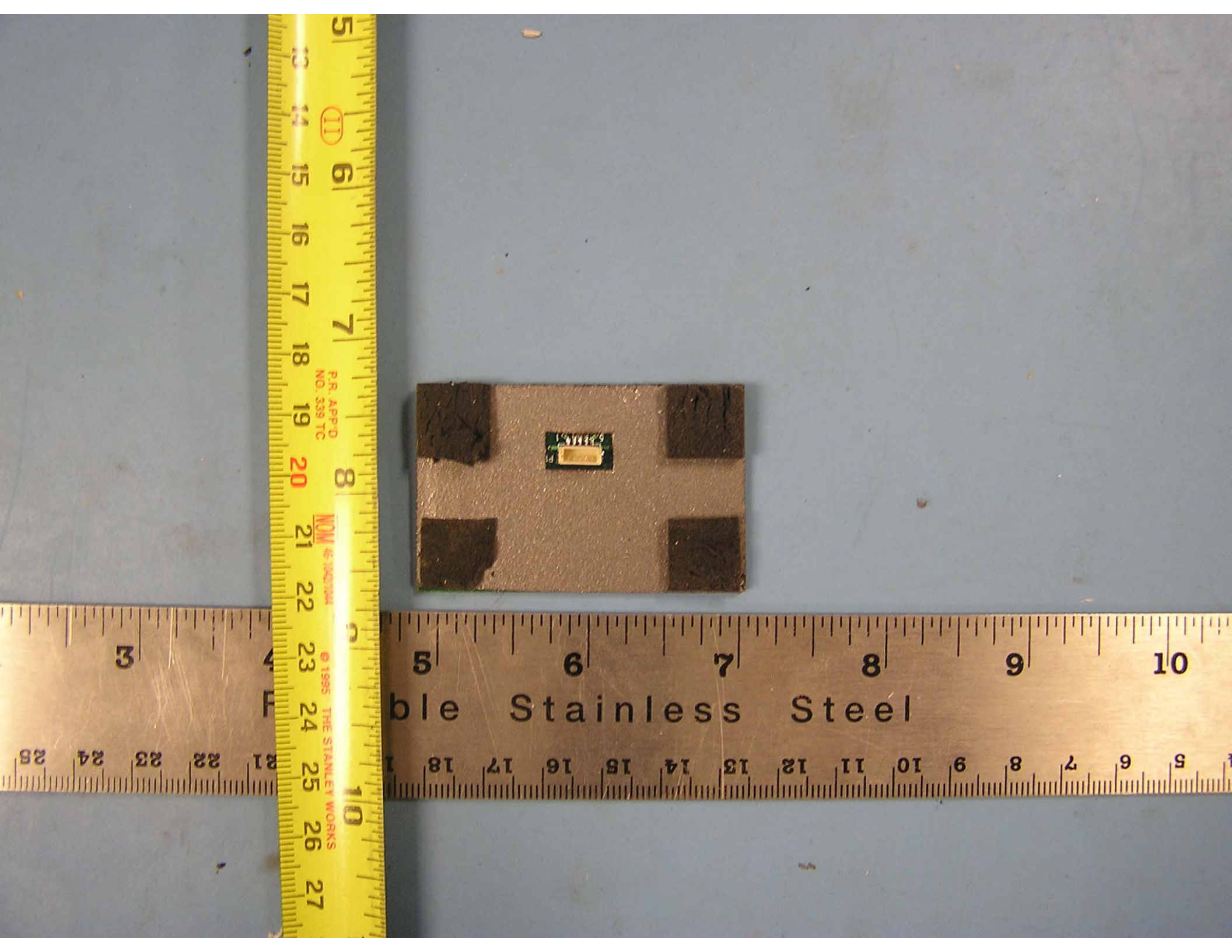


P.R. APP'D
NO. 339 TC

NOM 46-1042/104

© 1995 THE STANLEY WORKS



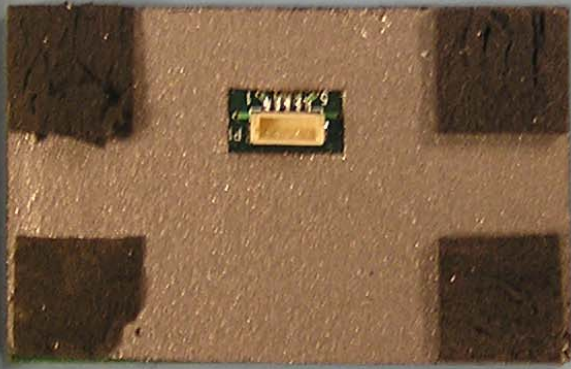


II

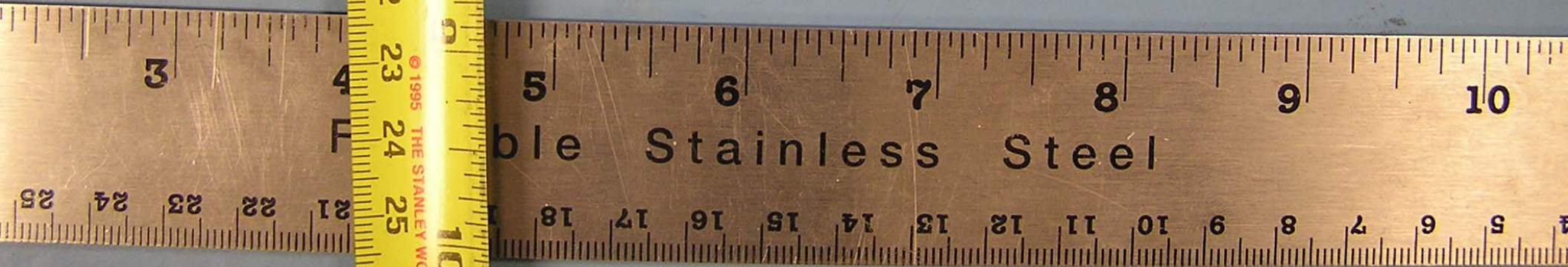
P.R. APP'D
NO. 339 TC

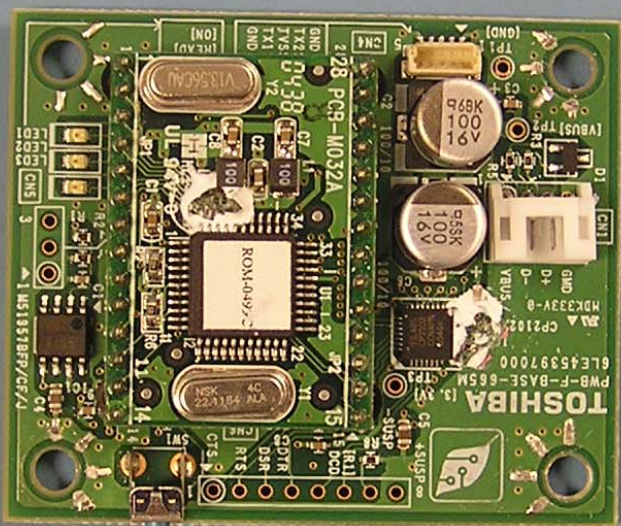
NOM 46-140104

© 1995 THE STANLEY WORKS



ble Stainless Steel



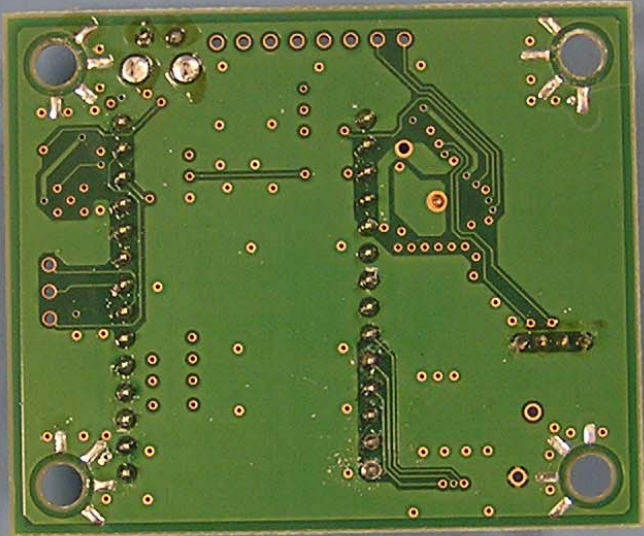


P.R. App'D
NO. 339 TC

NOM 46-1042/1044

© 1995 THE STANLEY WORKS

Stainless Steel

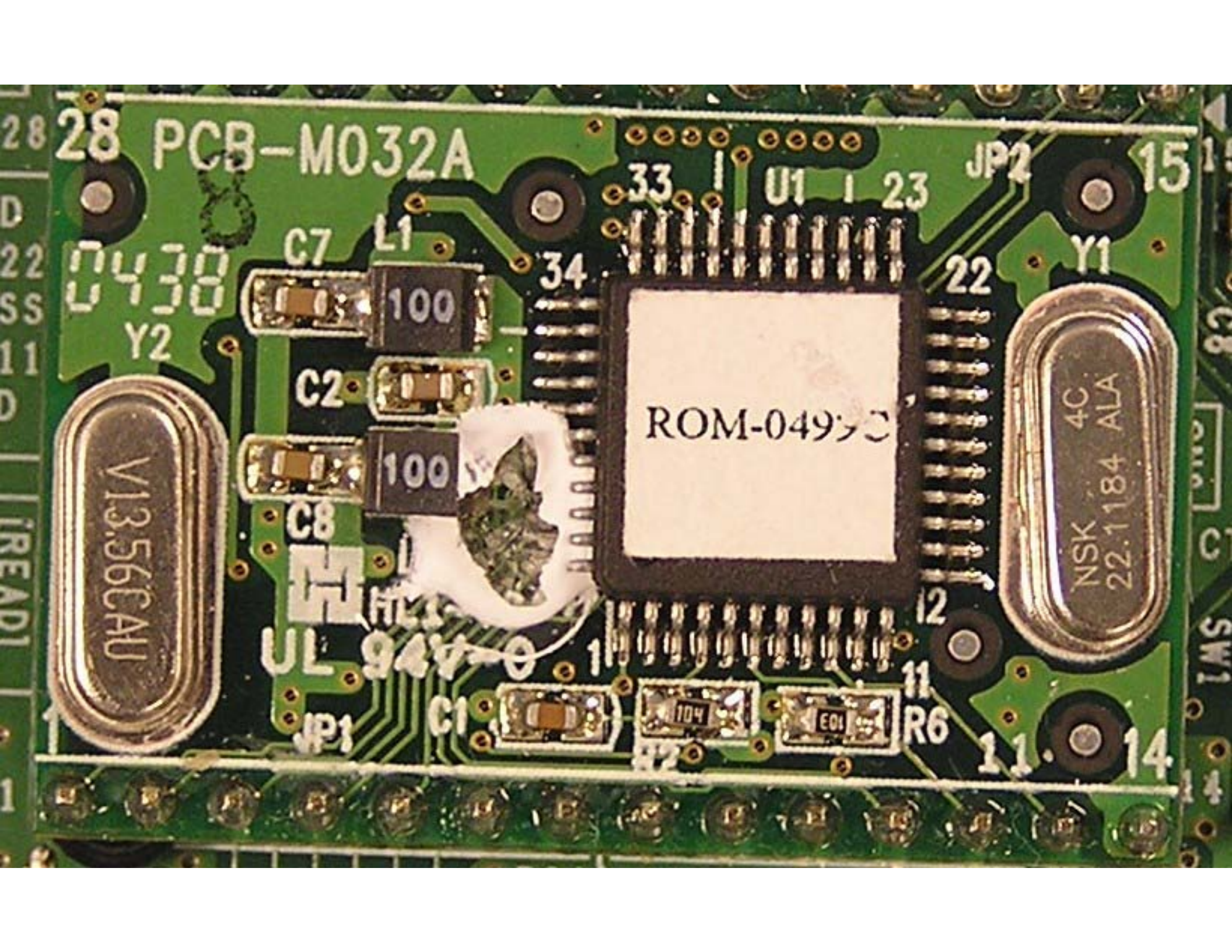


P.R. App'D
NO. 339 TC

NOM
46-1042/1044

© 1995 THE STANLEY WORKS

Stainless Steel



28 PCB-M032A

0438
Y2

V13.56CAU

C7 L1
100

C2
100

C8
94V-0

JP1 C1

34

33 U1 23

ROM-0493C

12

11 R6

JP2

22

NSK 4C
22.1184 ALA

11

15

Y1

14

