

ITCR^{NG} Loco – Internal Product Photos

FCC/IC Certification Exhibit

Document information

- Item number: DOC-00000537
- Date: 04/30/2025
- Revision: 1

© Copyright 2025 Meteorcomm LLC. All rights reserved.

By downloading, using, or referring to this document or any of the information contained herein you acknowledge and agree:

Ownership

This document and the information contained herein are the sole and exclusive property of Meteorcomm LLC ("MCC"). Except for a limited review right, you obtain no rights in or to the document, its contents, or any related intellectual property. MCC may, upon written notice, terminate your internal review of this document and, upon such notice, you will return the original of this document to MCC together with the originals and all copies of all documents in your possession or under your control that refer or relate to it.

Limited Use and Non-Disclosure

This document contains information that is considered confidential and/or proprietary to MCC. It is protected by copyright, trade secret, and other applicable laws. This document is provided to you for your internal review only and you may not disclose, transmit, distribute, duplicate or use it or any of the information contained herein, in whole or in part, except as agreed under separate written agreement with MCC. All information contained herein shall be kept strictly confidential.

Disclaimer of Warranty

THIS DOCUMENT AND ALL INFORMATION CONTAINED HEREIN OR OTHERWISE PROVIDED BY MCC, AND ALL INTELLECTUAL PROPERTY RIGHTS THEREIN ARE PROVIDED ON AN "AS IS" BASIS. MCC MAKES NO WARRANTIES OF ANY KIND WITH RESPECT THERETO AND EXPRESSLY DISCLAIMS ALL WARRANTIES OF ANY KIND, WHETHER EXPRESS, IMPLIED OR STATUTORY, INCLUDING BUT NOT LIMITED TO, WARRANTIES OF MERCHANTABILITY, FITNESS FOR A PARTICULAR PURPOSE, TITLE, NON-INFRINGEMENT, ACCURACY, COMPLETENESS, INTERFERENCE WITH QUIET ENJOYMENT, SYSTEM INTEGRATION OR WARRANTIES ARISING FROM COURSE OF DEALING, USAGE OR TRADE PRACTICE.

Assumption of Risk

You are responsible for conducting your own independent assessment of the information contained in this document (including without limitation schematic symbols, footprints and layer definitions) and for confirming its accuracy. You may not rely on the information contained herein and agree to validate all such information using your own technical experts. Accordingly, you agree to assume sole responsibility for your review, use of, or reliance on the information contained in this document. MCC assumes no responsibility for, and you unconditionally and irrevocably release and discharge MCC and its affiliates and their respective officers, directors, and employees ("MCC Parties") from any and all loss, claim, damage or other liability associated with or arising from your use of any of the information contained in this document.

Limitation of Liability

IN NO EVENT SHALL MCC OR THE MCC PARTIES BE LIABLE FOR ANY INDIRECT, INCIDENTAL, EXEMPLARY, SPECIAL, PUNITIVE OR TREBLE OR CONSEQUENTIAL DAMAGES OR LOSSES, WHETHER SUCH LIABILITY IS BASED ON CONTRACT, WARRANTY, TORT (INCLUDING NEGLIGENCE), PRODUCT LIABILITY OR OTHERWISE, REGARDLESS AS TO WHETHER THEY HAVE NOTICE AS TO ANY SUCH CLAIMS.

Hazardous Uses

None of the information contained in this document may be used in connection with the design, manufacture or use of any equipment or software intended for use in any fail safe applications or any other application where a failure may result in loss of human life or personal injury, property damage, or have a financial impact or in connection with any nuclear facility or activity or shipment or handling of any hazardous, ultra hazardous or similar materials ("Hazardous Uses"). MCC disclaims all liability of every kind for any Hazardous Uses, and you release MCC and the MCC Parties from and shall indemnify MCC and the MCC Parties against any such liability, including, but not limited to, any such liability arising from MCC's negligence.

Copyright and Trademark

ARM™, AR^{cpu}™, AR^{edge}™, AR^{etio}™, Discovery Network™, ITCR™, and ITCR^{NG}™ are trademarks of Meteorcomm LLC, and Meteorcomm®; stylized METEORCOMM®; ITCM®; ITCnet®; ITCview®; and Powering the Digital Railroad Network® are registered trademarks of Meteorcomm LLC; these trademarks may not be used without express written permission of Meteorcomm LLC.

1 Summary

This document contains internal photos of the ITCR^{NG} Loco Radio product.

- Manufacturer: Meteorcomm LLC
- Model Name: ITCR^{NG} Loco Radio
- Model Number: 65020
- FCC ID: BIB65020
- IC: 1300A-65020

2 PCBAs Photos

2.1 Main Board

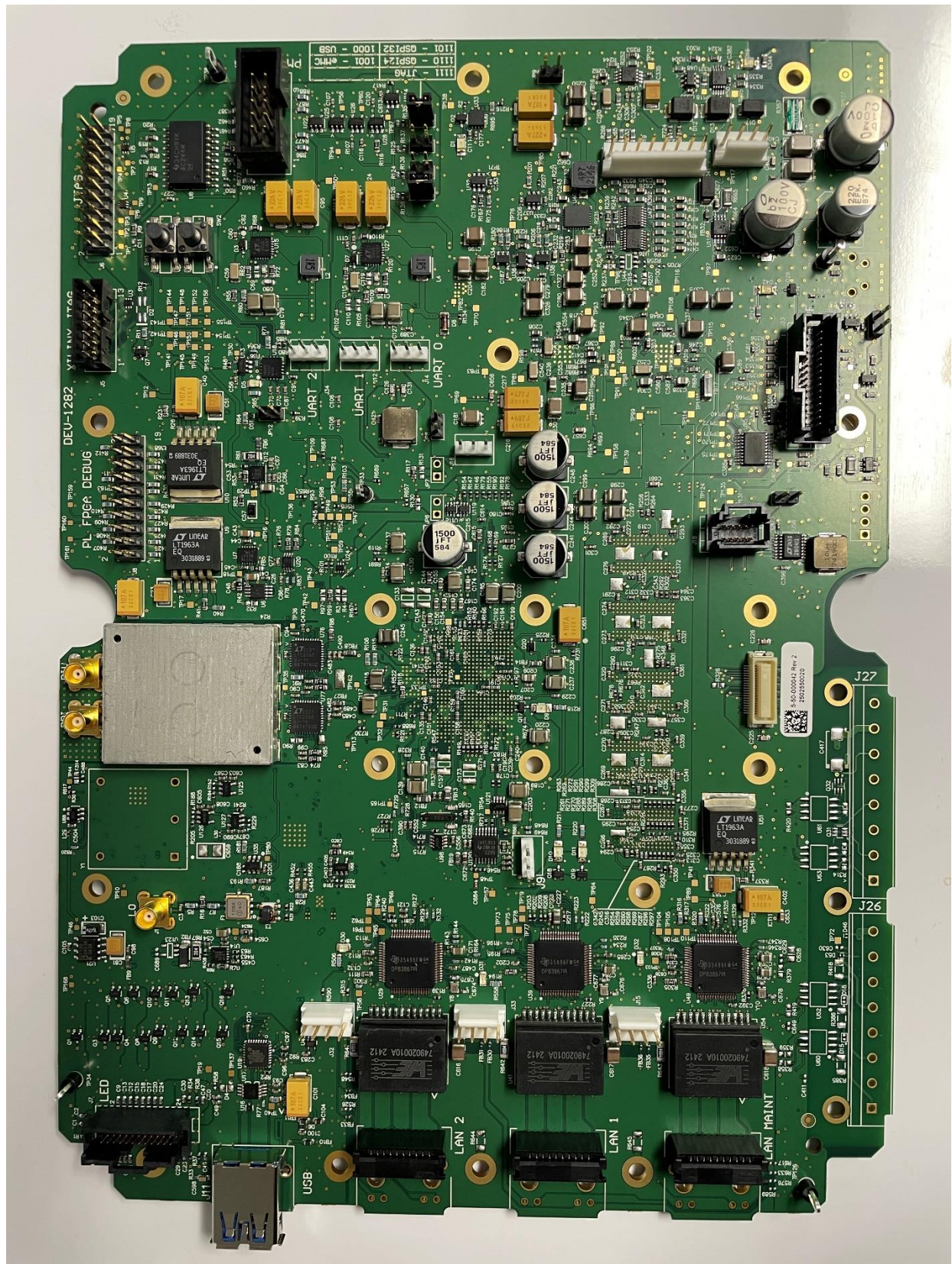


Figure 1 - Main Board - Top Side

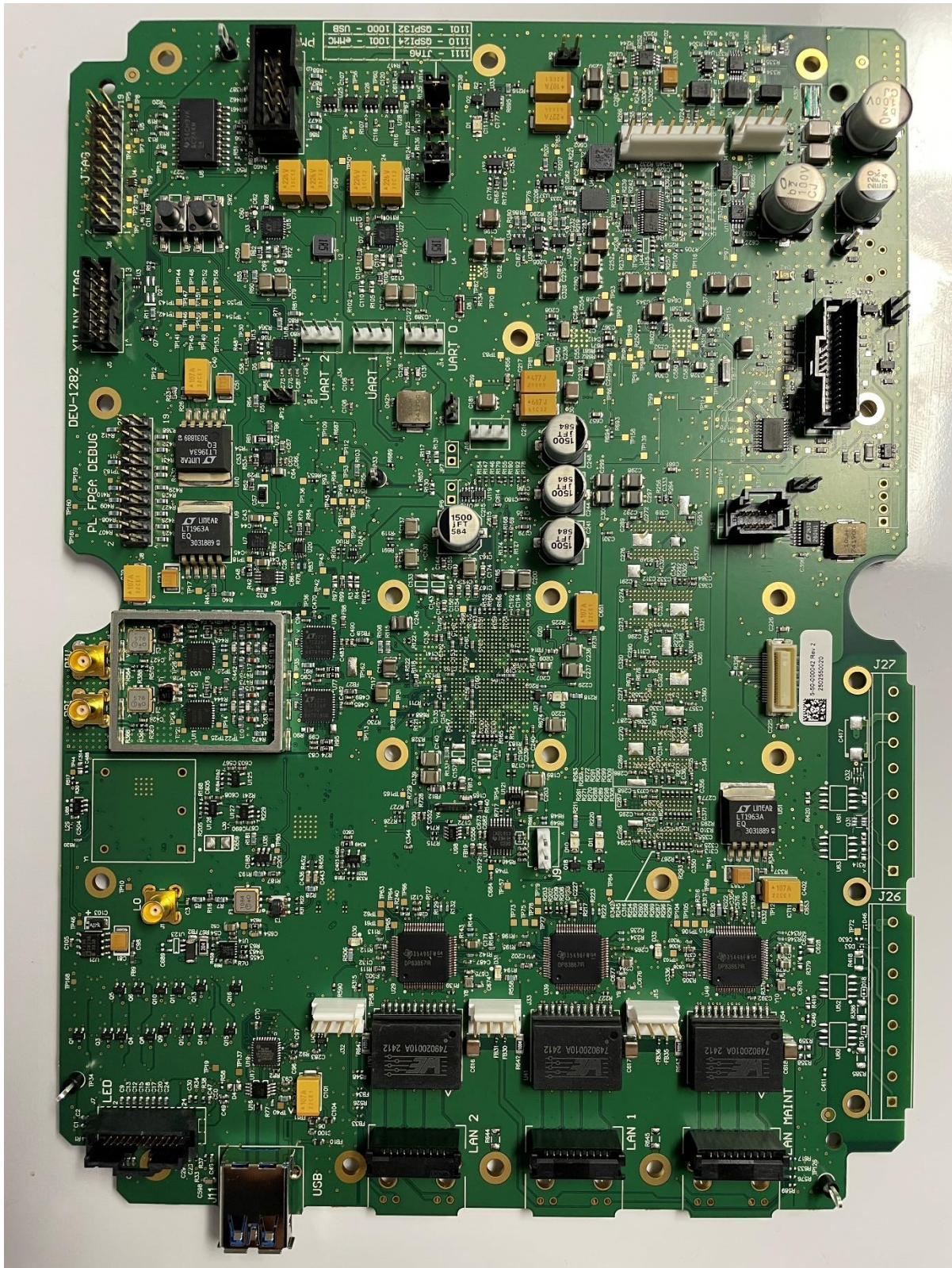


Figure 2 - Main Board - Top Side No Can

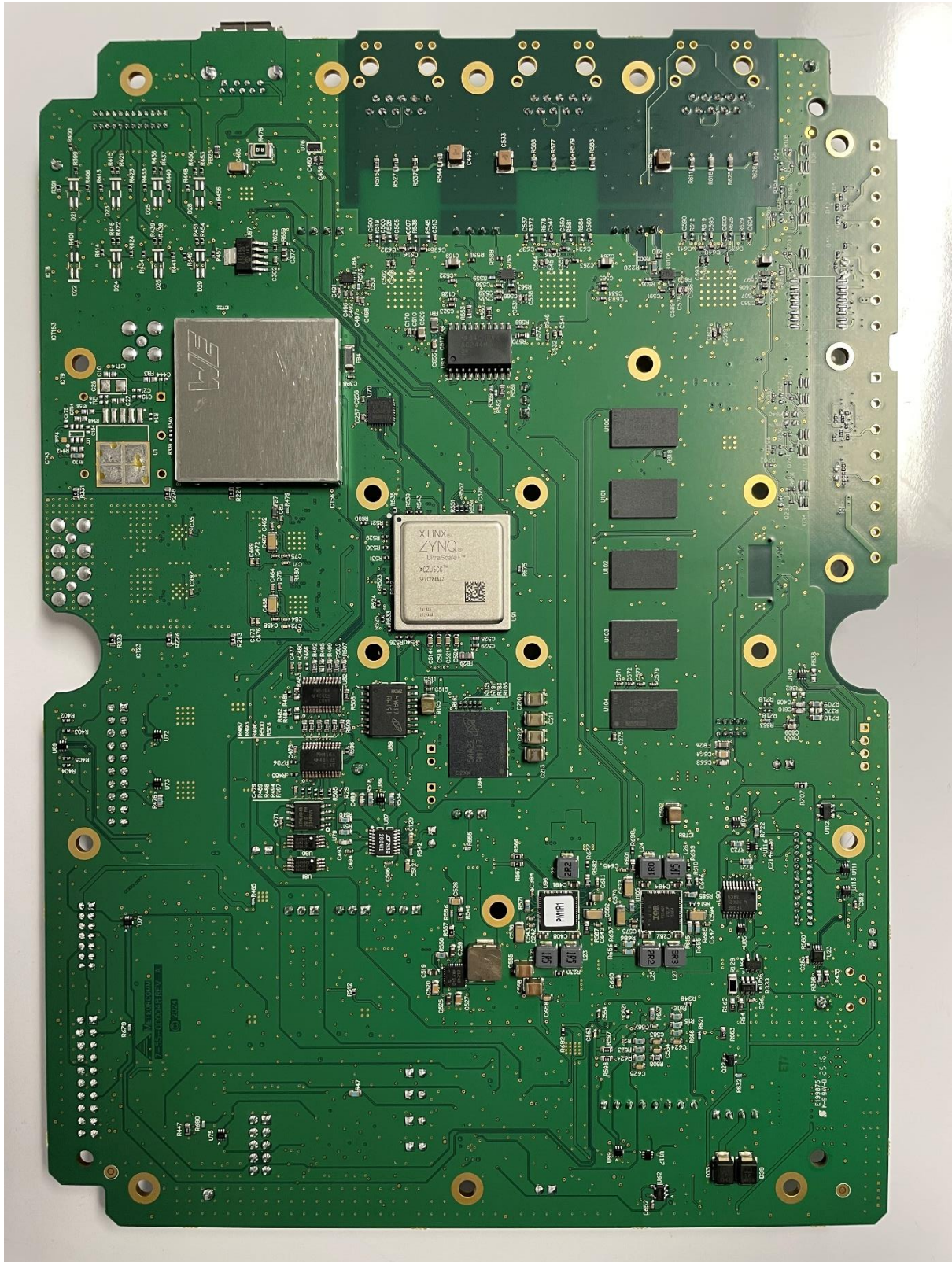


Figure 3 - Main Board – Bottom Side

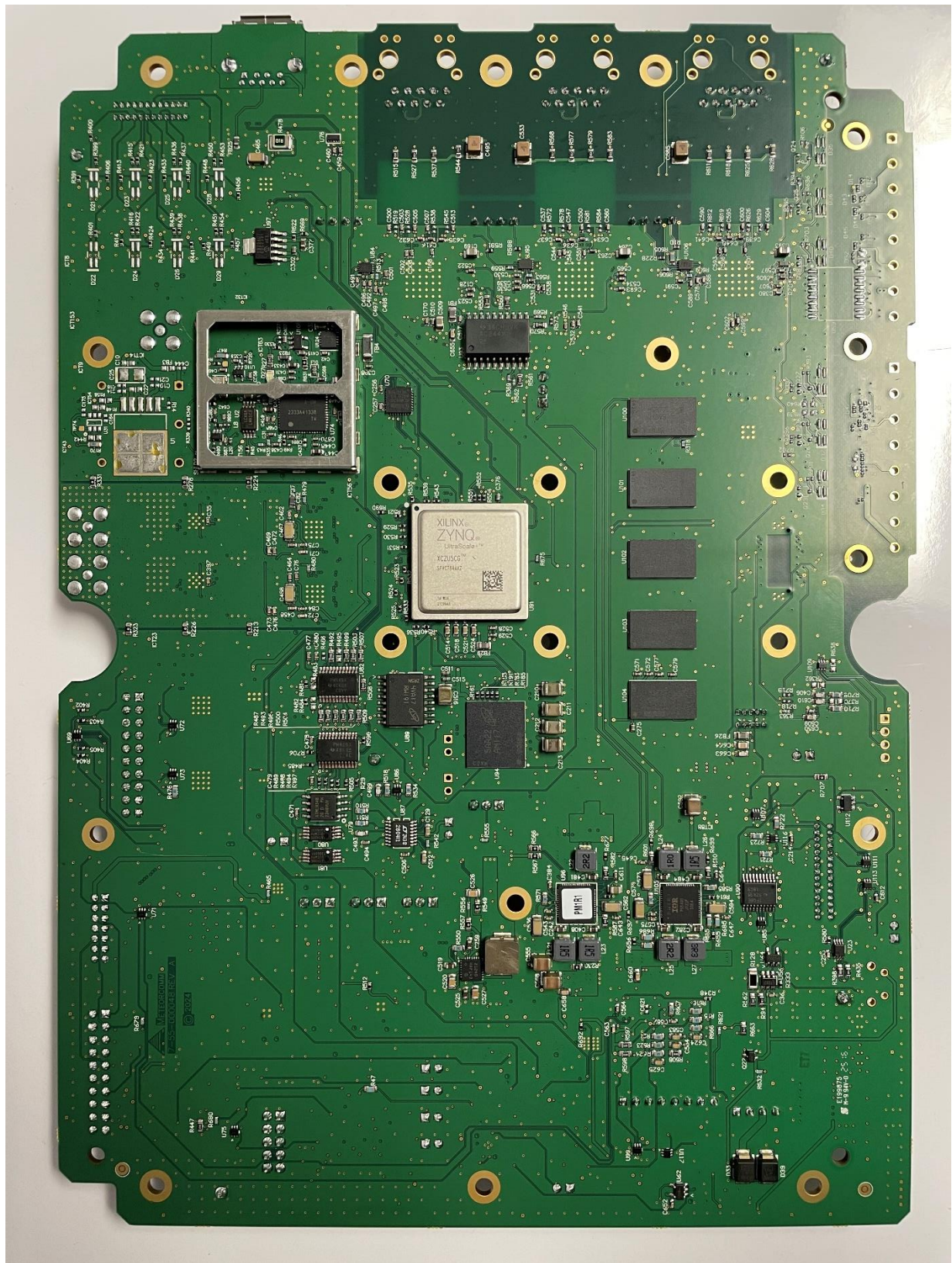


Figure 4 - Main Board – Bottom Side No Can

2.2 RF Board

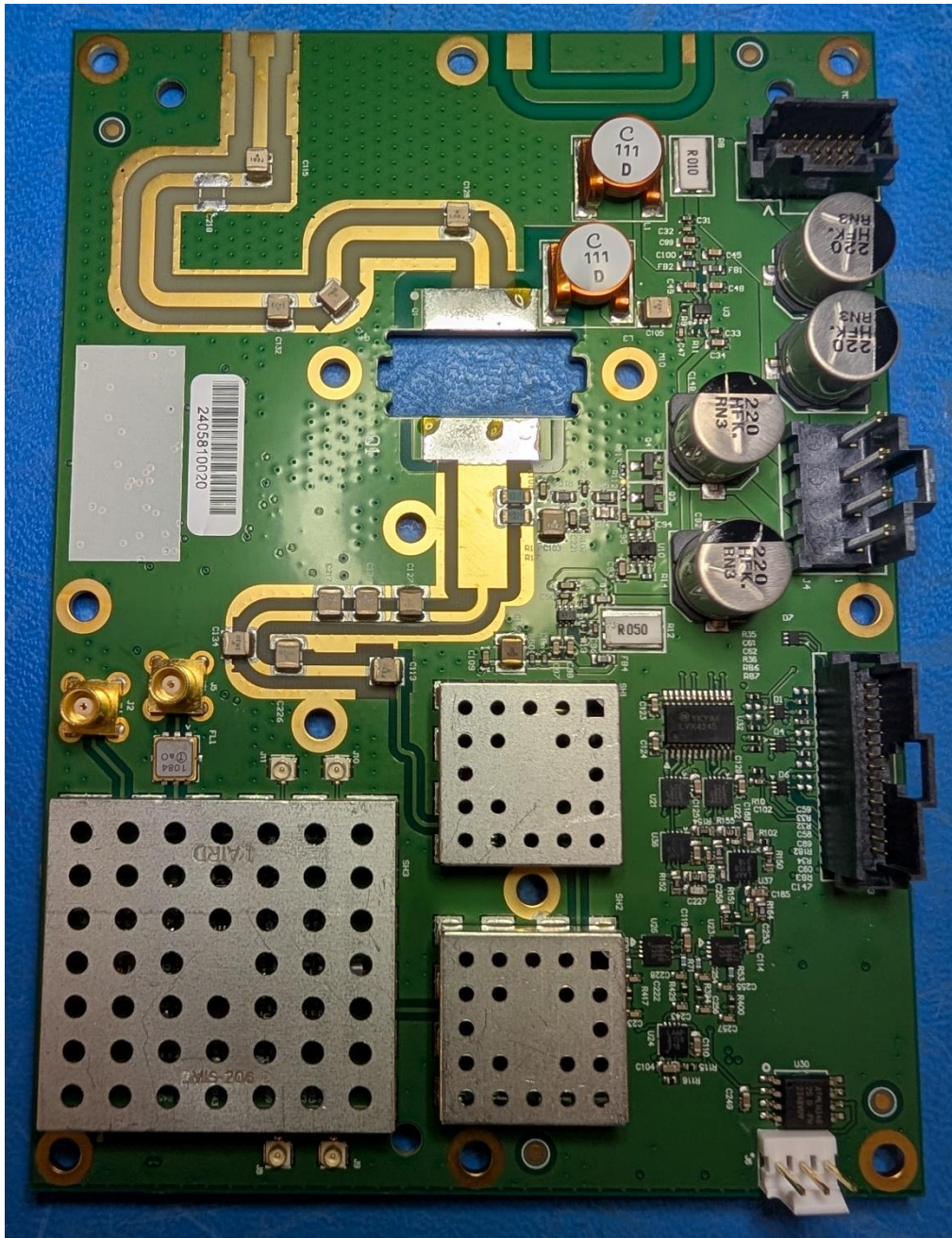


Figure 5 - RF Board - Top Side

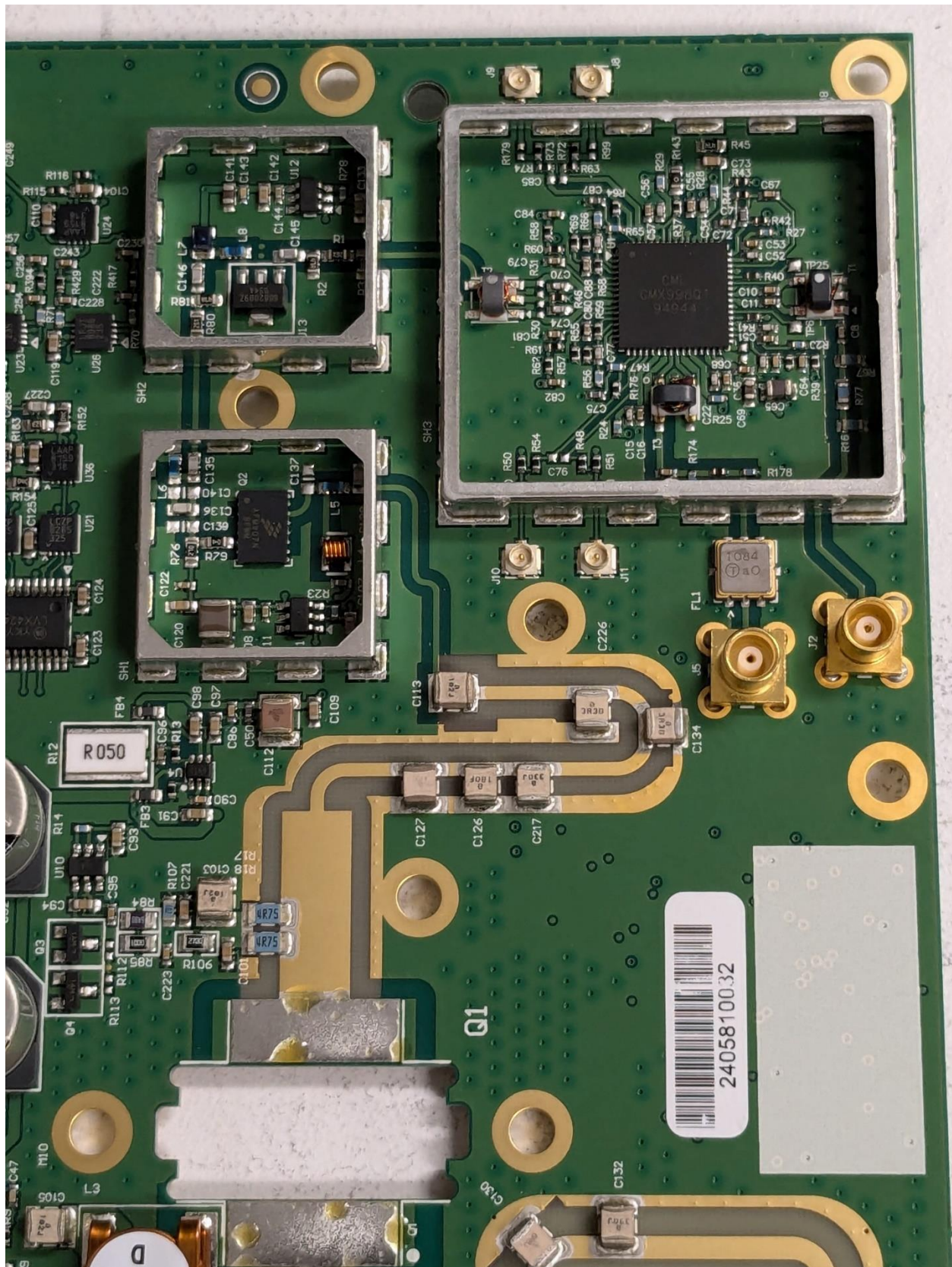


Figure 6 - RF Board - Top Side No Cans



Figure 7 – RF Board – Bottom Side

2.3 Front-End Board

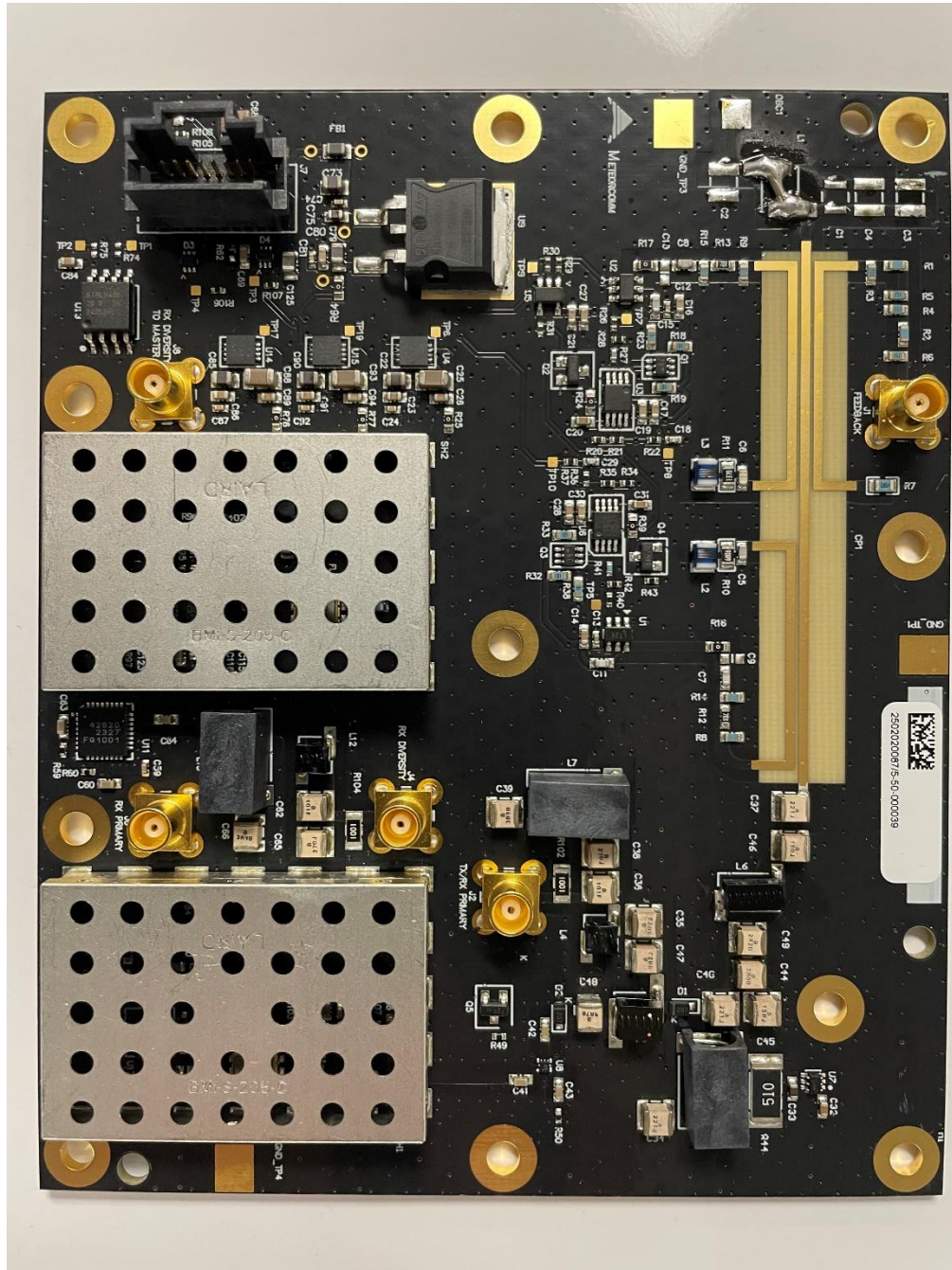


Figure 8 – Front-End Board Top Side

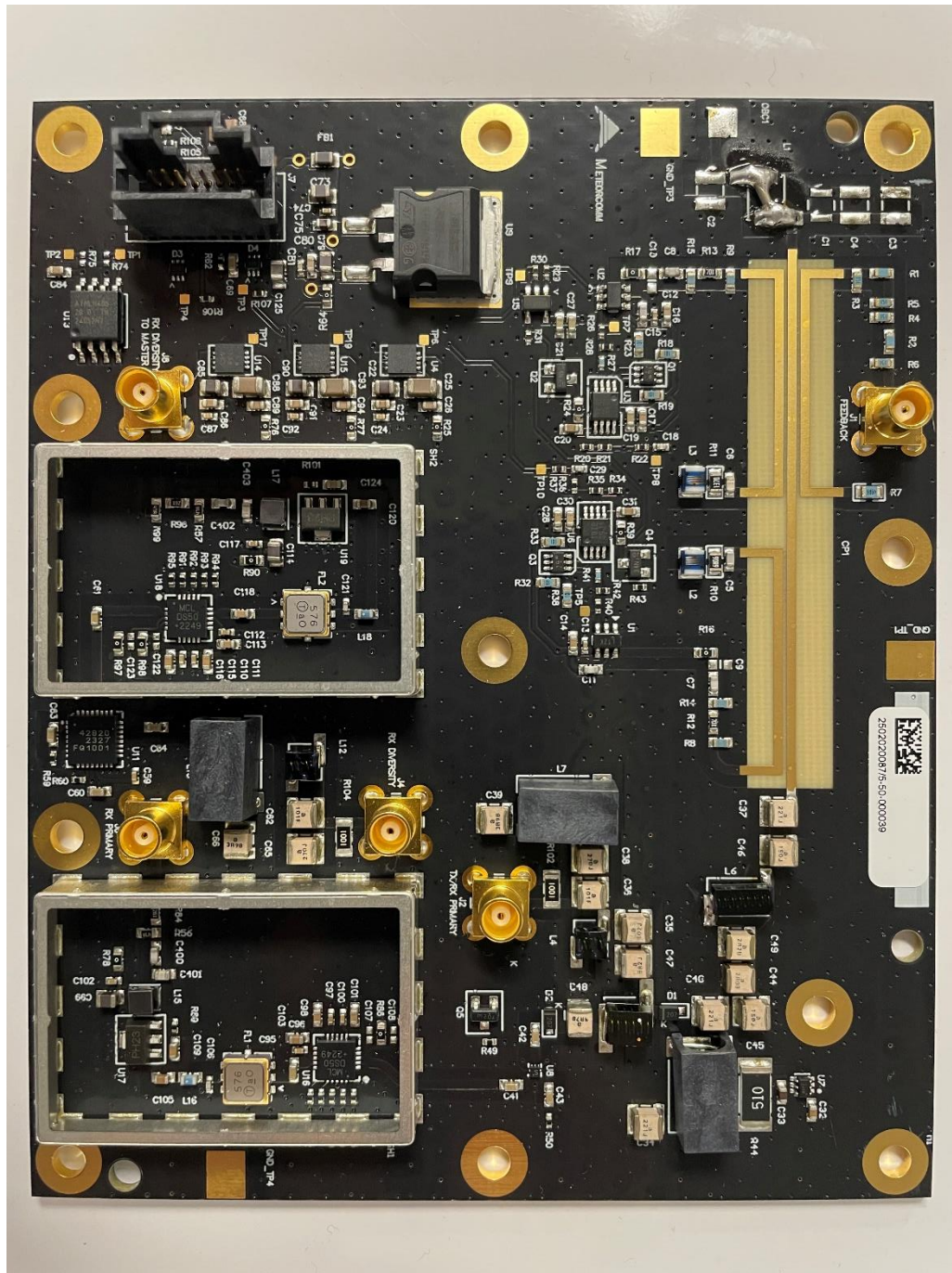


Figure 9 – Front-End Board Top Side, No Cans

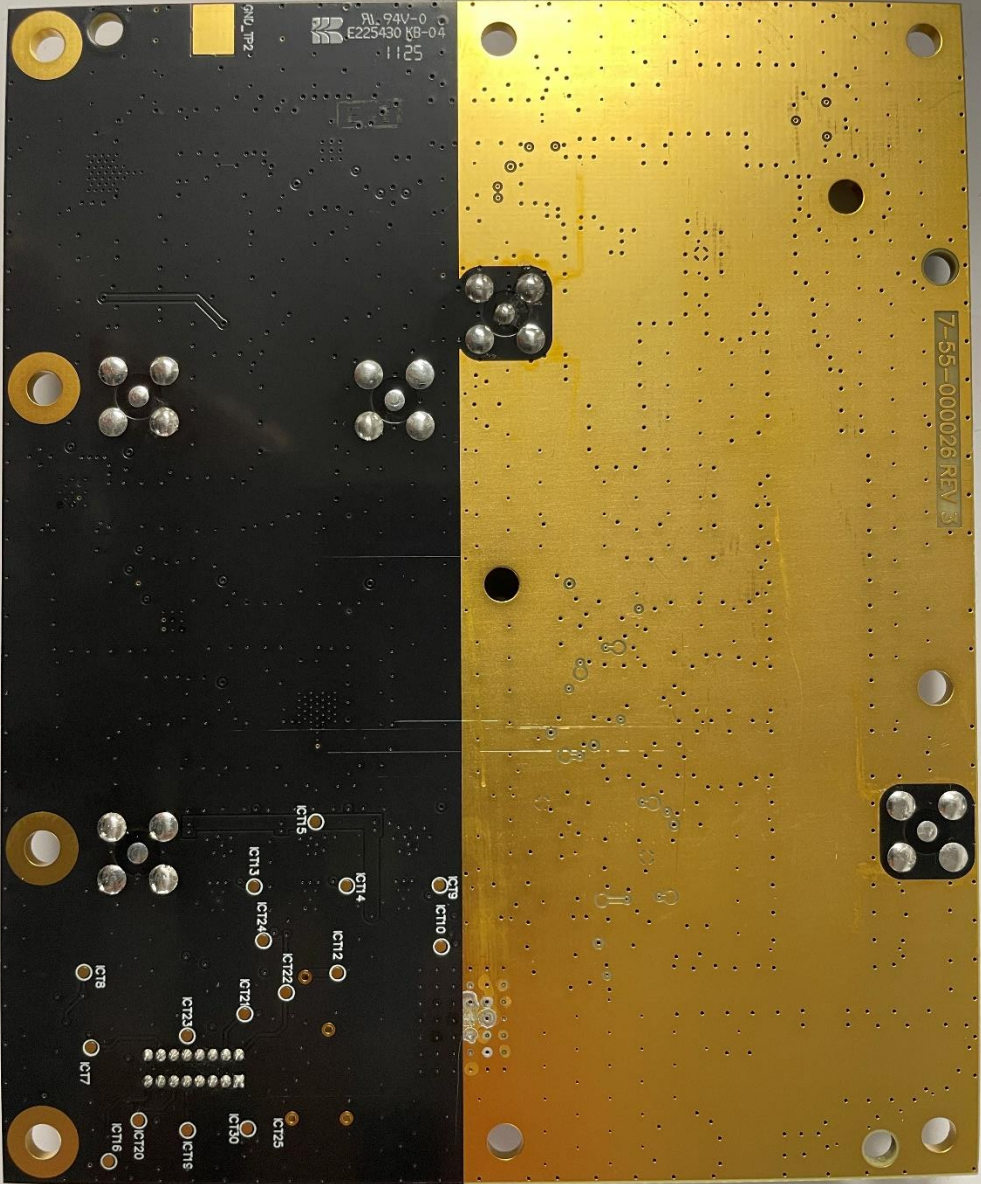


Figure 10 – Front-End Board Bottom Side

2.4 Power Supply Board

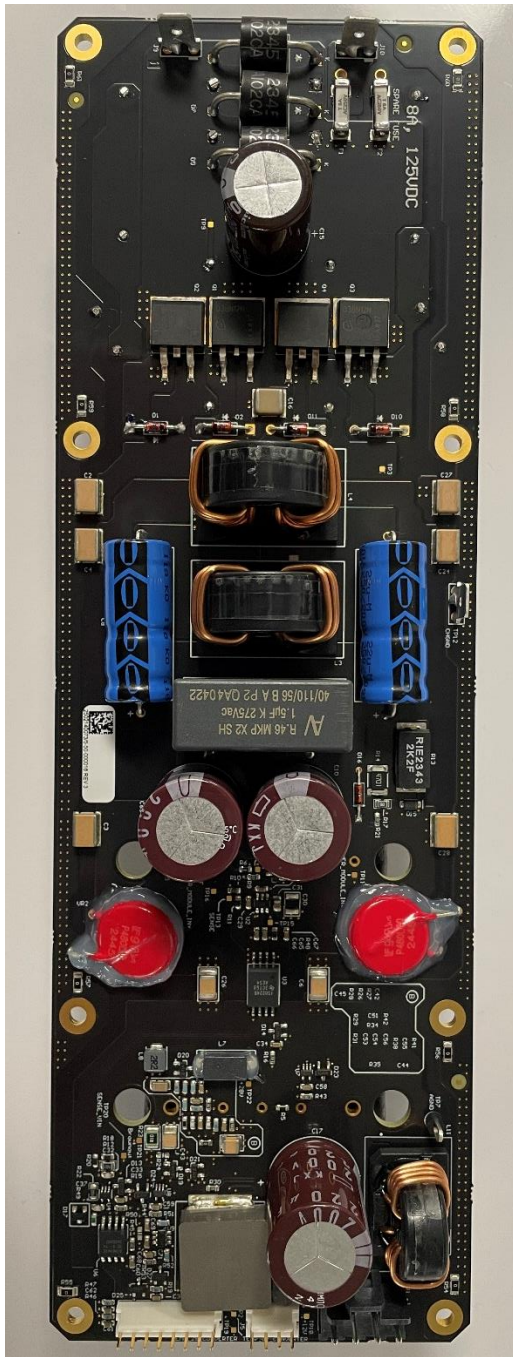


Figure 11 - Power Supply Board - Top Side

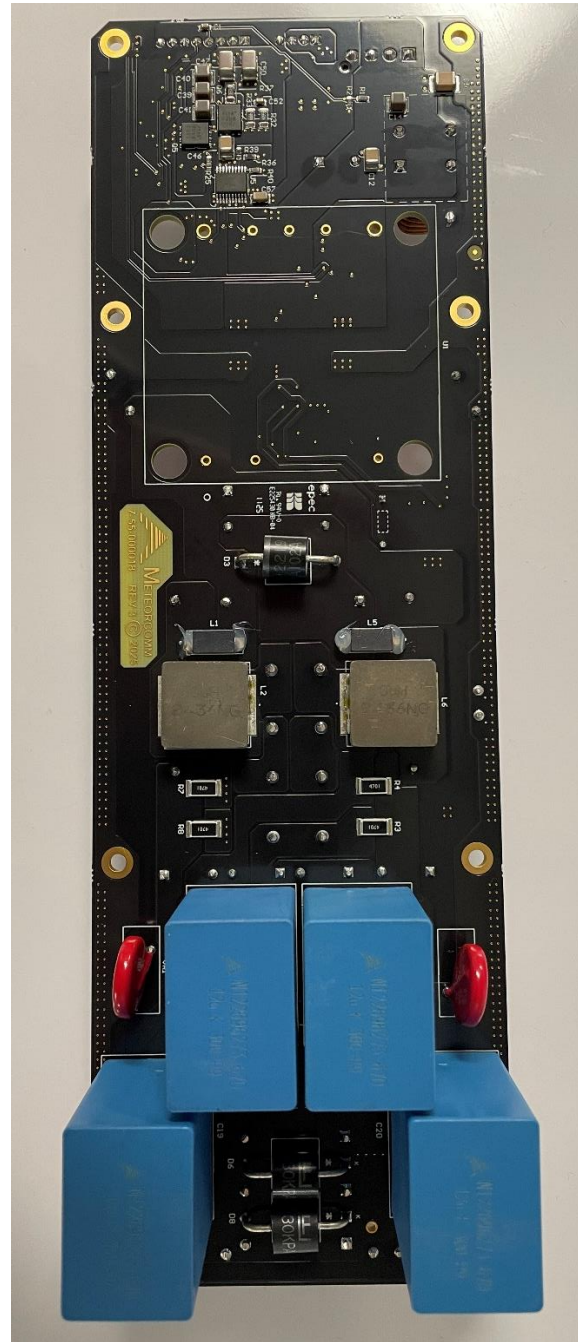


Figure 12 – Power Supply Board - Top Side

2.5 GNSS Daughter Board



Figure 13 - GNSS Board - Top Side

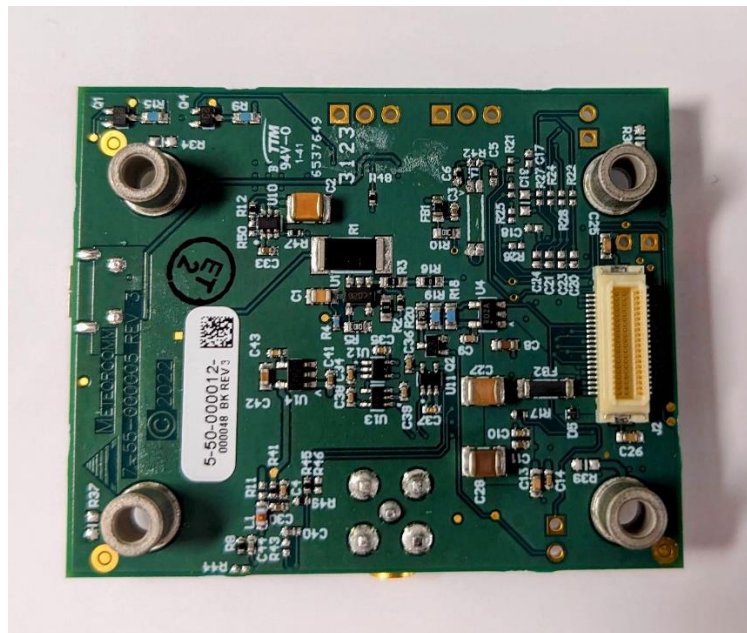


Figure 14 - GNSS Board - Bottom Side

3 Radio Assembly

3.1 Main Board Side

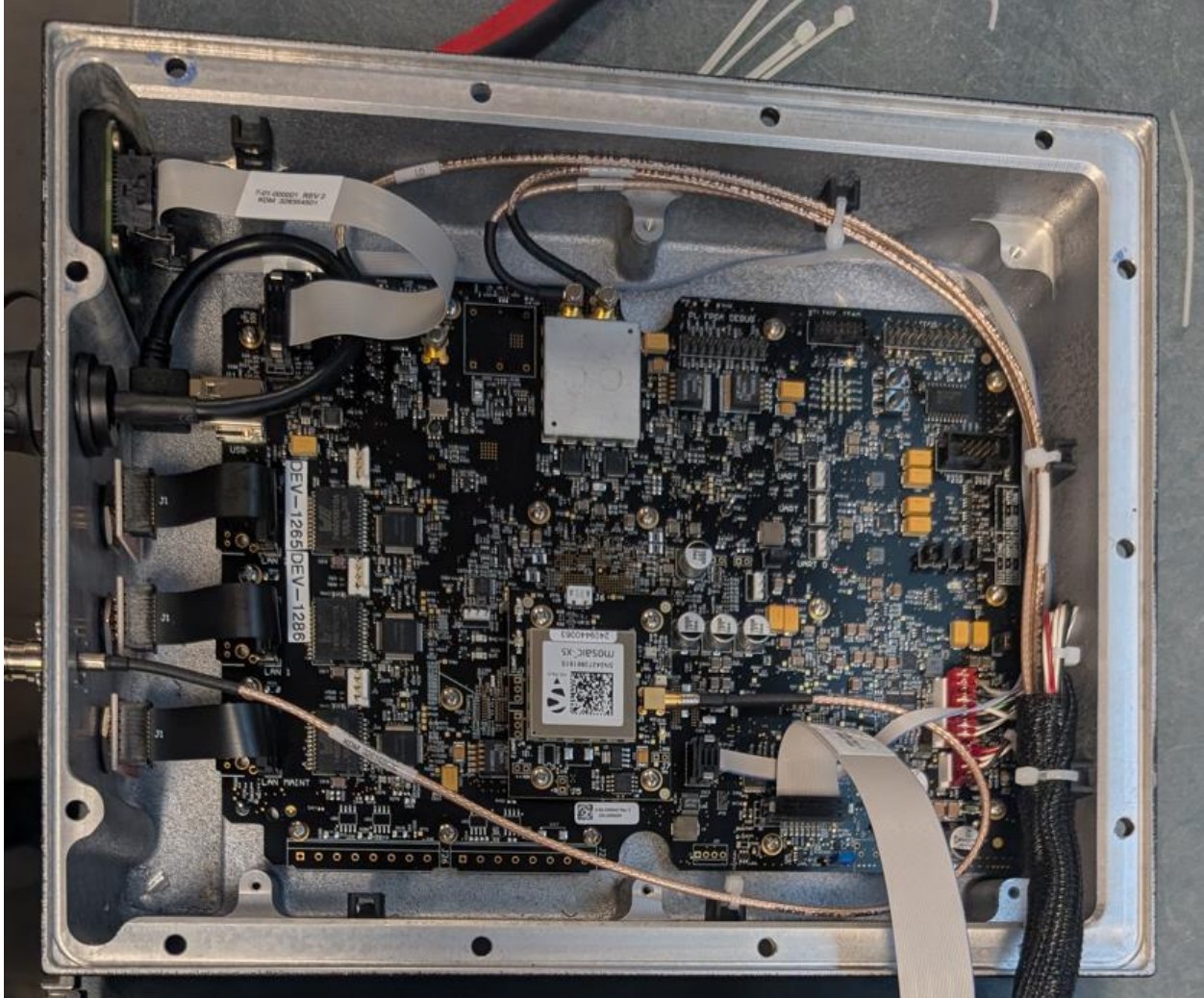


Figure 15 - Assembly – Main Board Side

3.2 RF Board Side

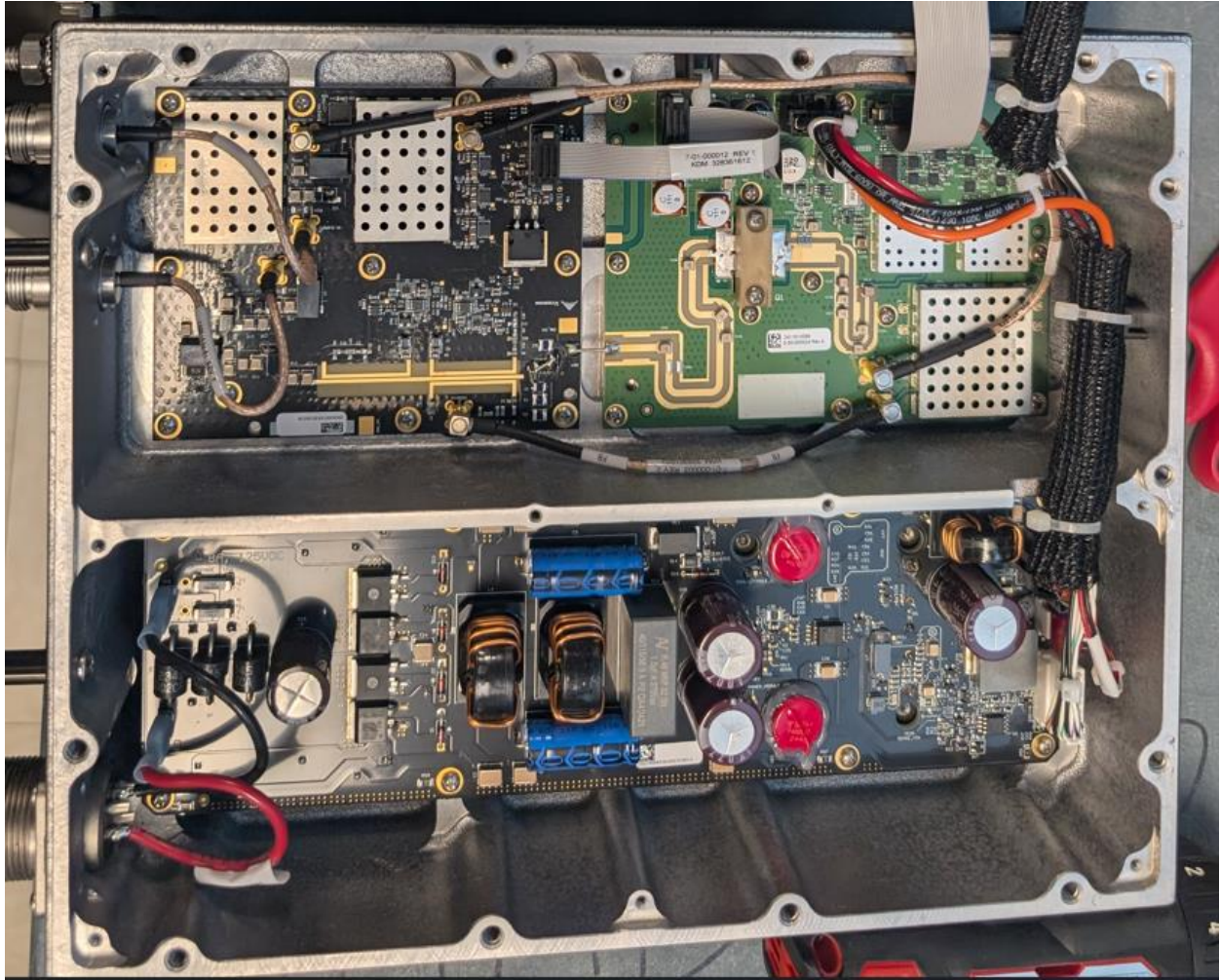


Figure 16 - Assembly RF Side

3.3 Full assembly – Open

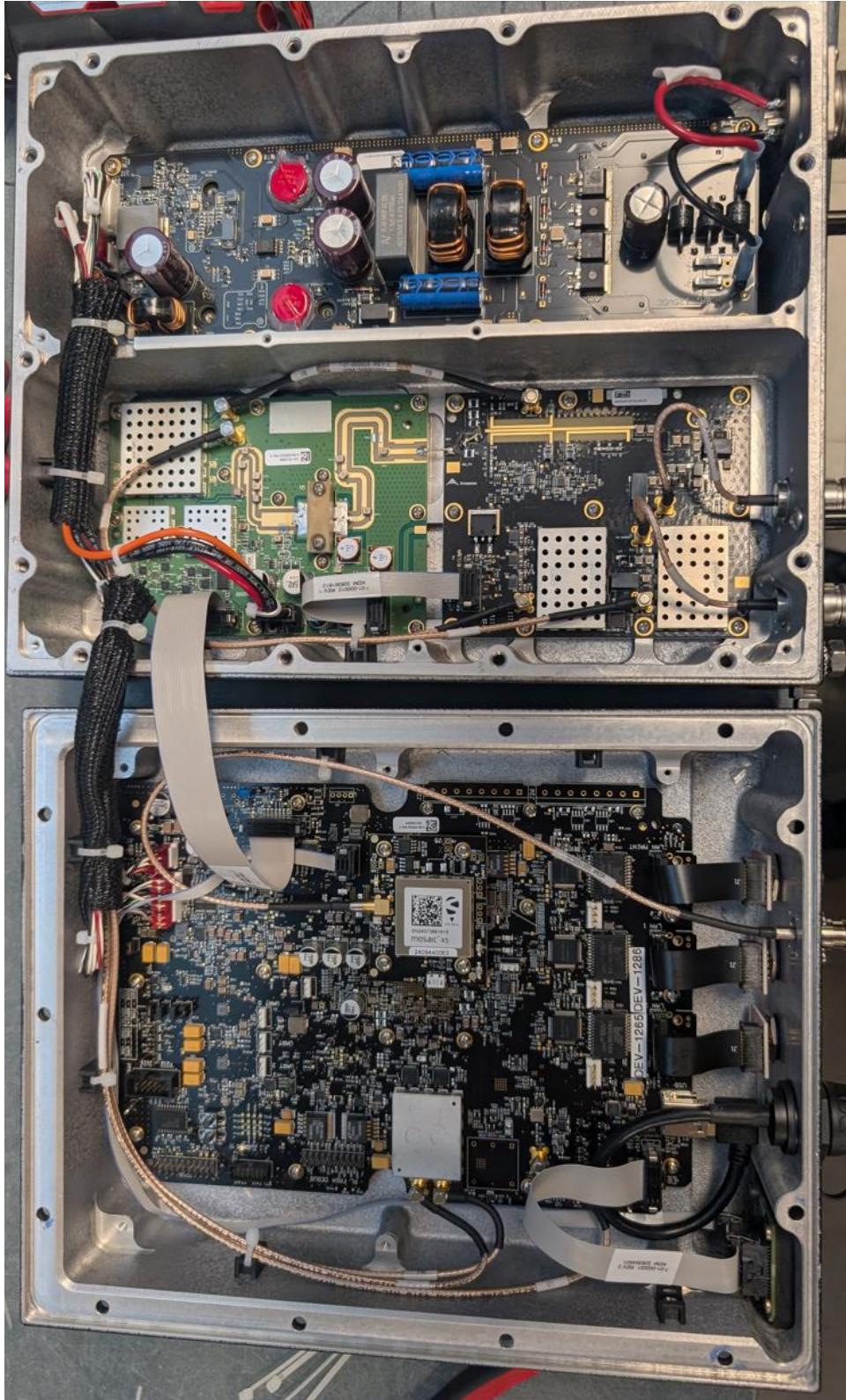


Figure 17 - Full assembly - Open - Without closeout plate

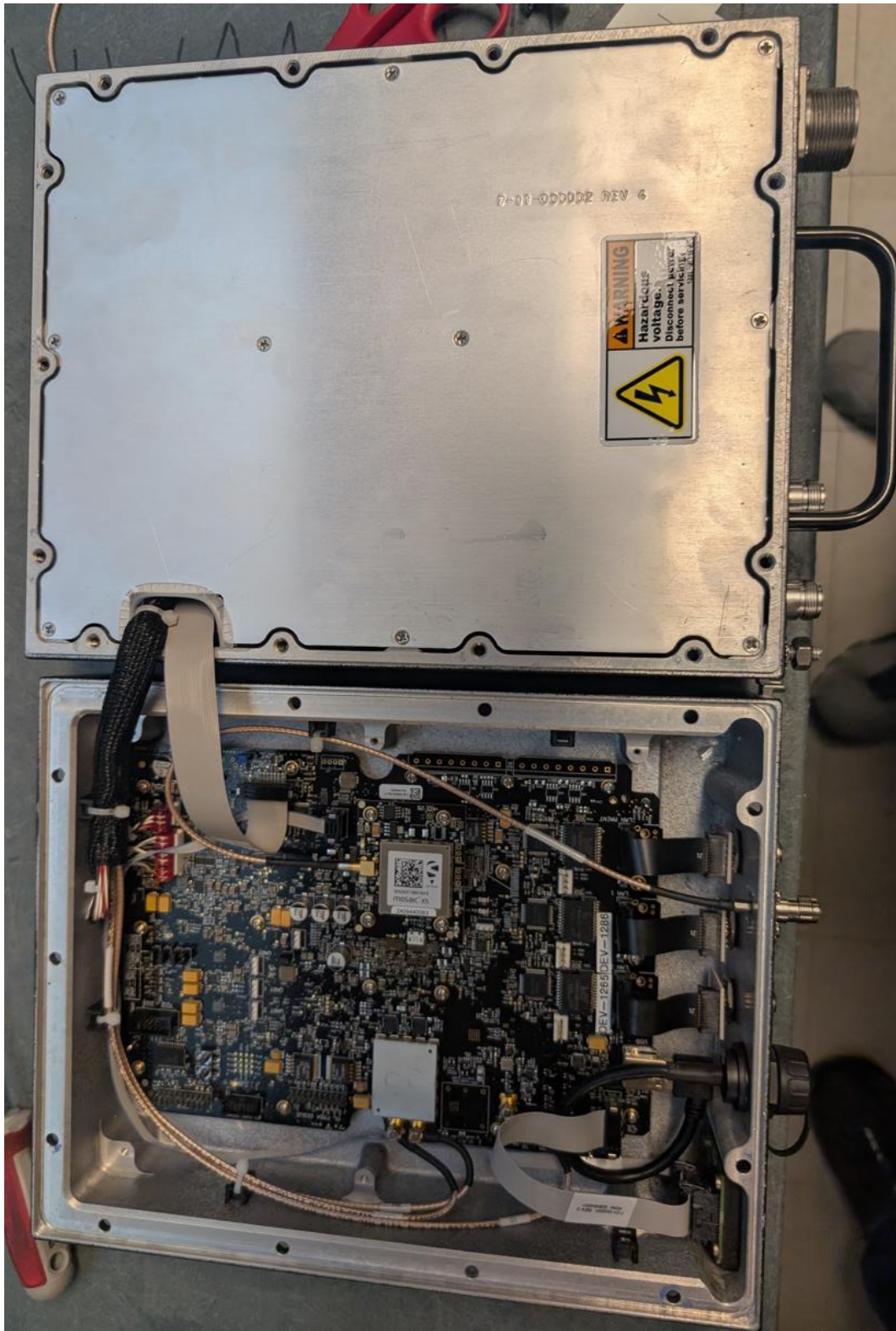


Figure 18 - Full Assembly, Open - with closeout plate