

63020 Locomotive Radio - Internal Pictures



Cover opened with Shields

63020 Locomotive Radio - Internal Pictures



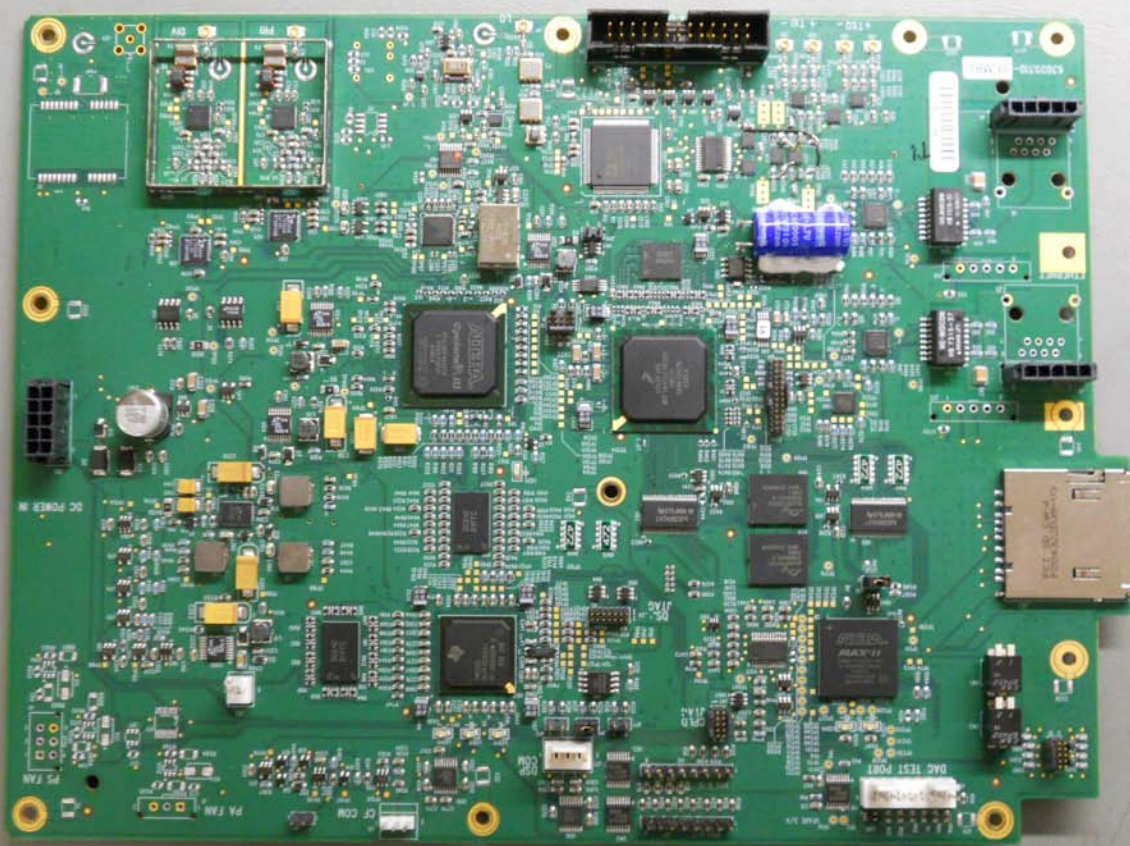
Cover Assembly with Master Board and LED Board, shield removed

63020 Locomotive Radio - Internal Pictures



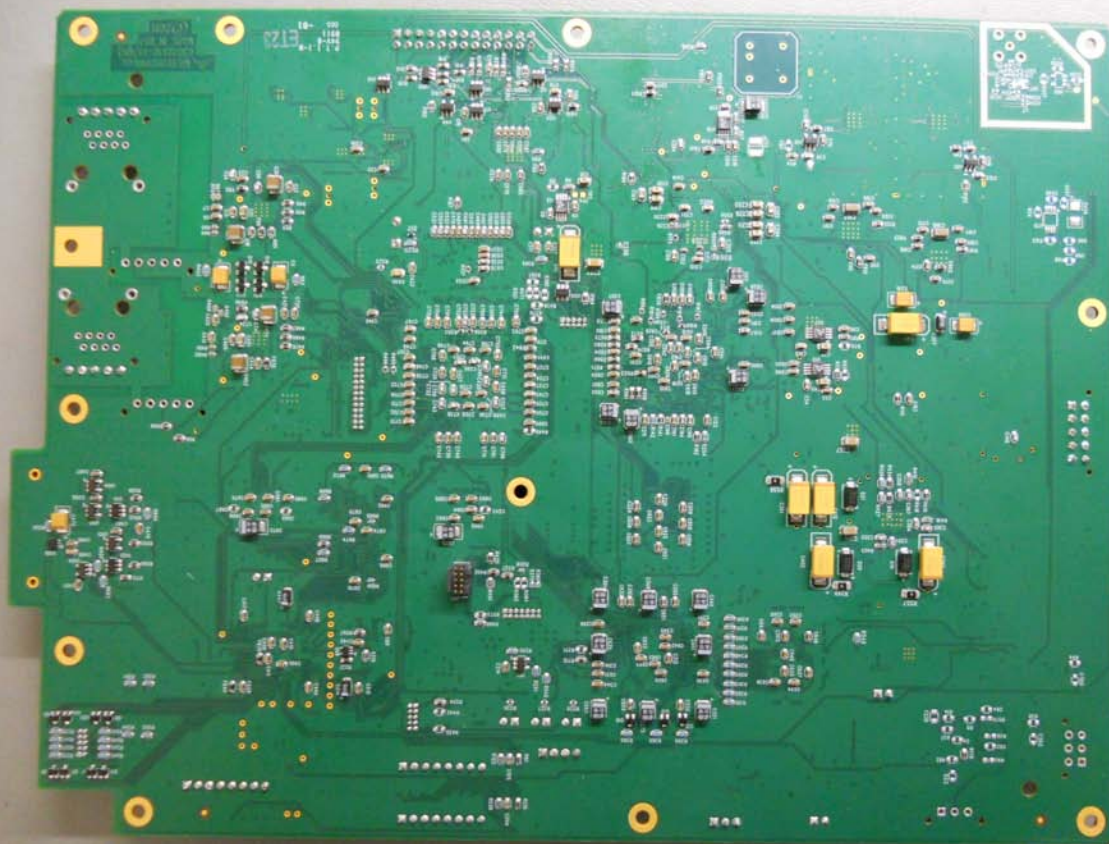
Cover Assembly, Disassembled View

63020 Locomotive Radio - Internal Pictures



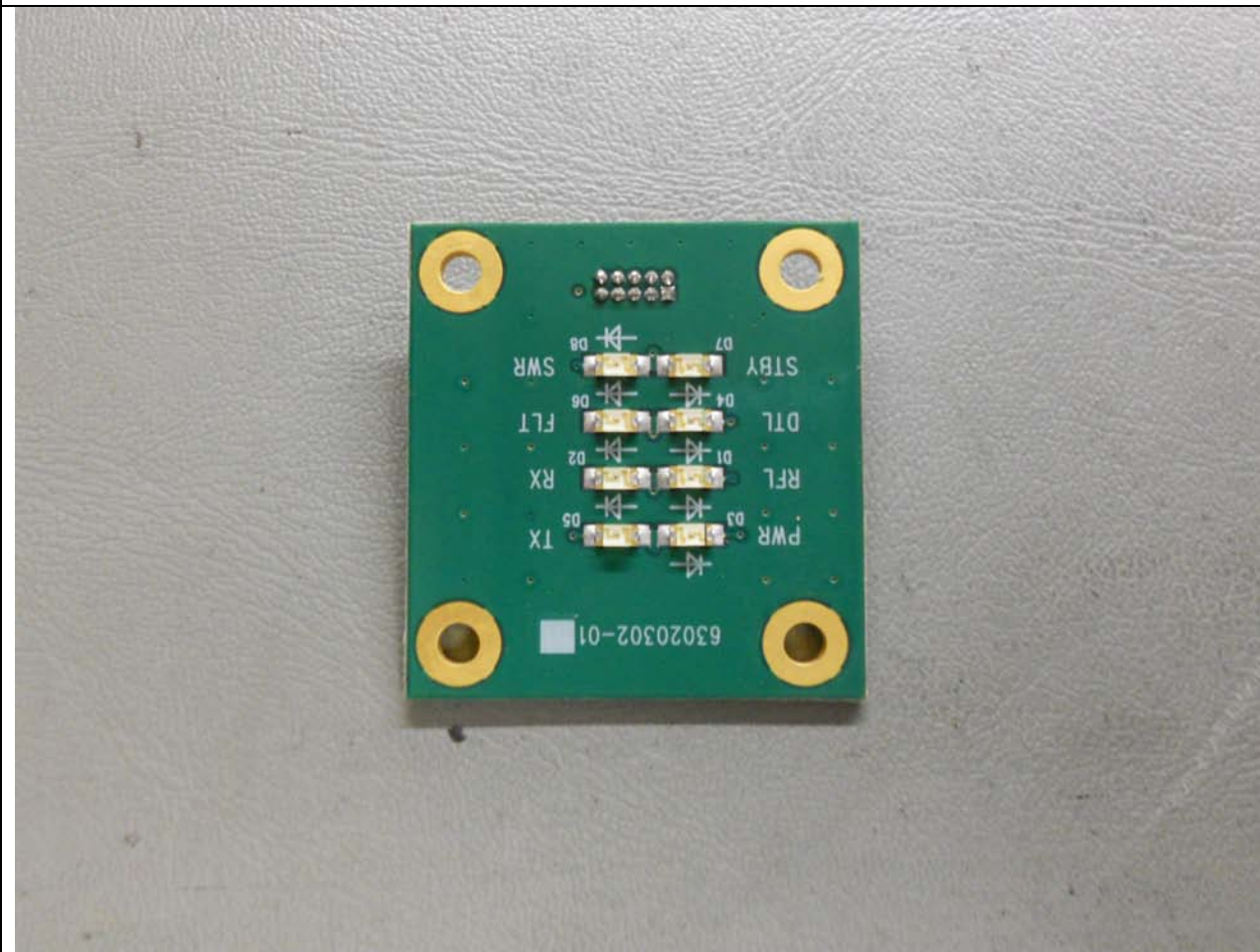
Master Board, Top Side

63020 Locomotive Radio - Internal Pictures



Master Board, Bottom Side

63020 Locomotive Radio - Internal Pictures



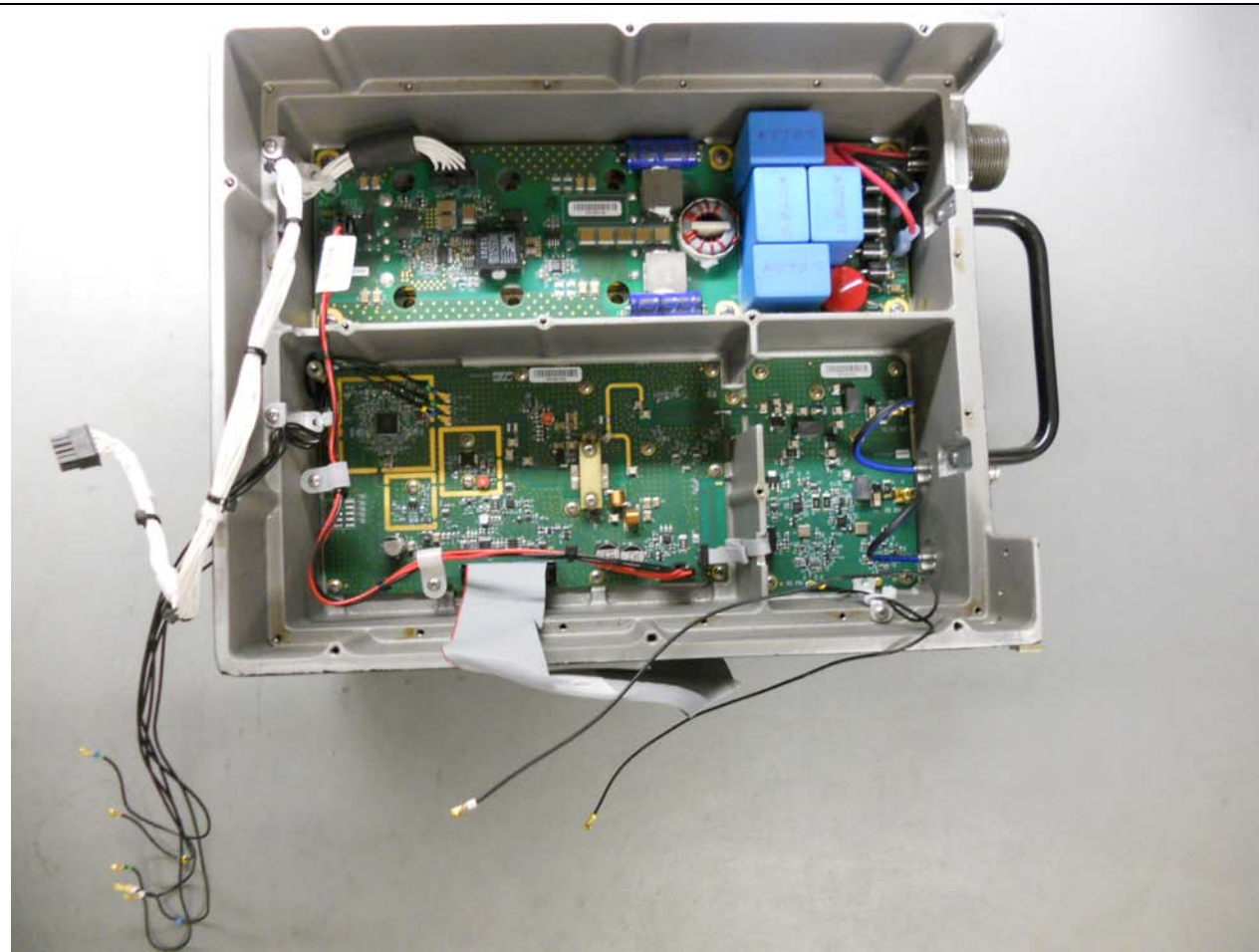
LED Board, Top Side

63020 Locomotive Radio - Internal Pictures



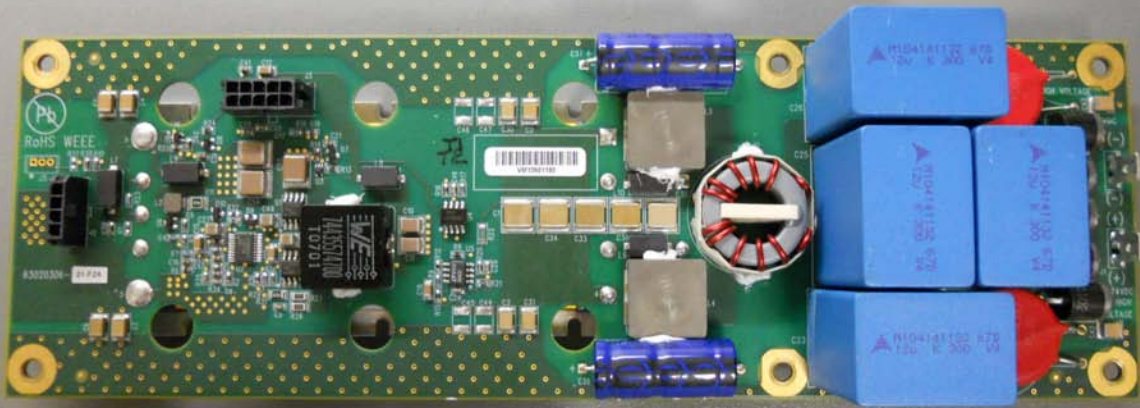
LED Board, Bottom Side

63020 Locomotive Radio - Internal Pictures



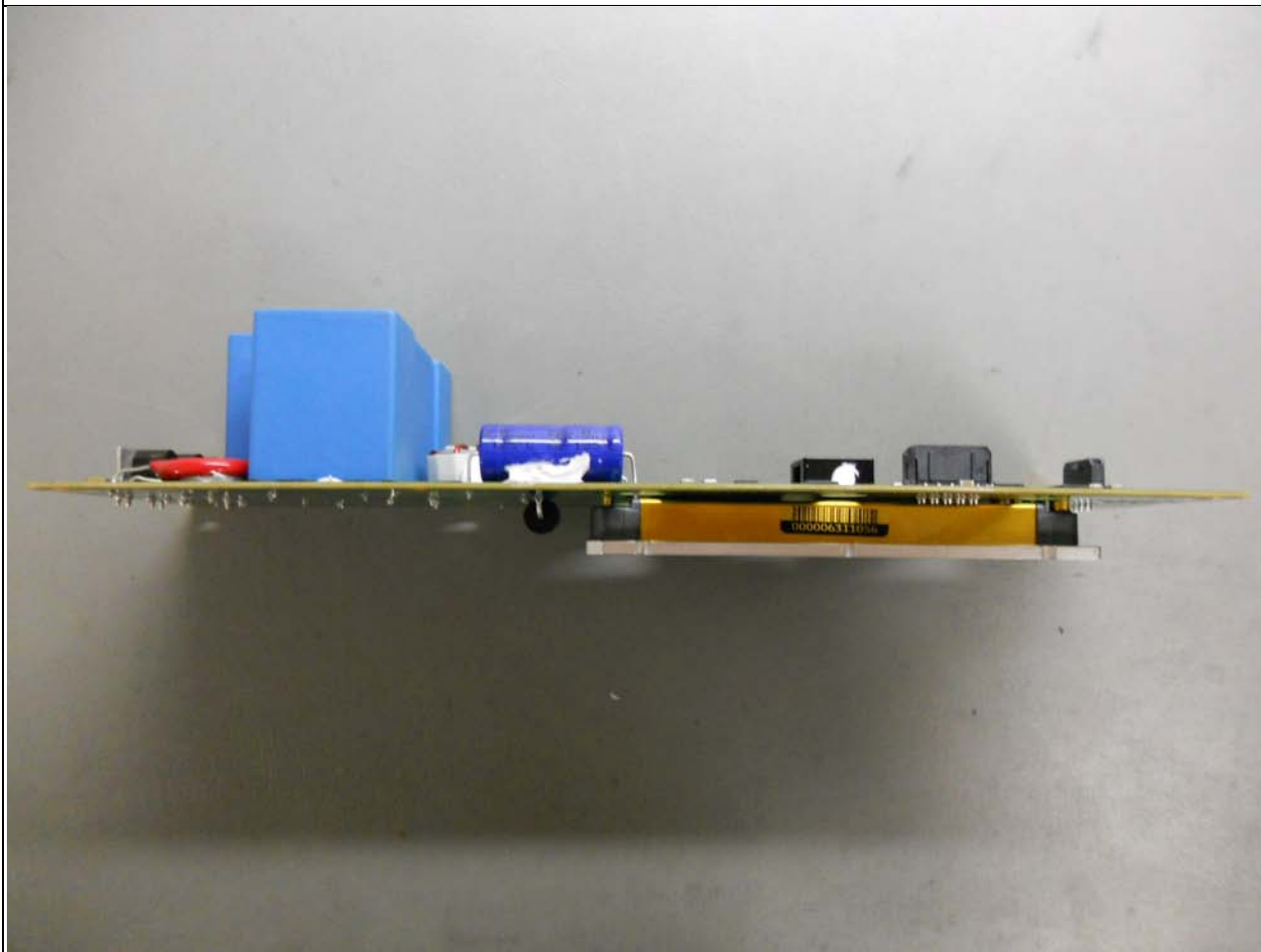
Heatsink Assembly, Shield Removed

63020 Locomotive Radio - Internal Pictures



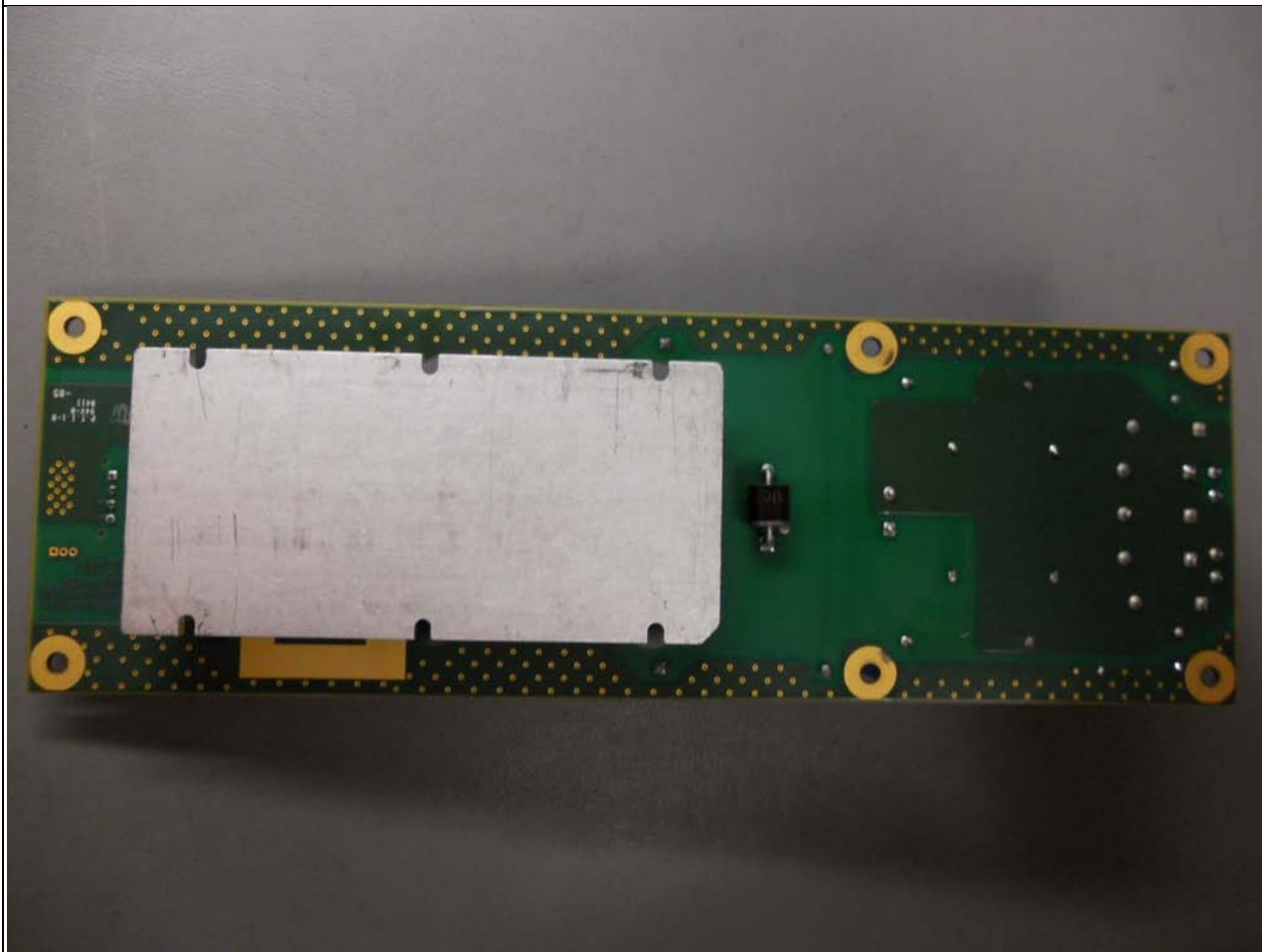
Power Supply Board, Top Side

63020 Locomotive Radio - Internal Pictures



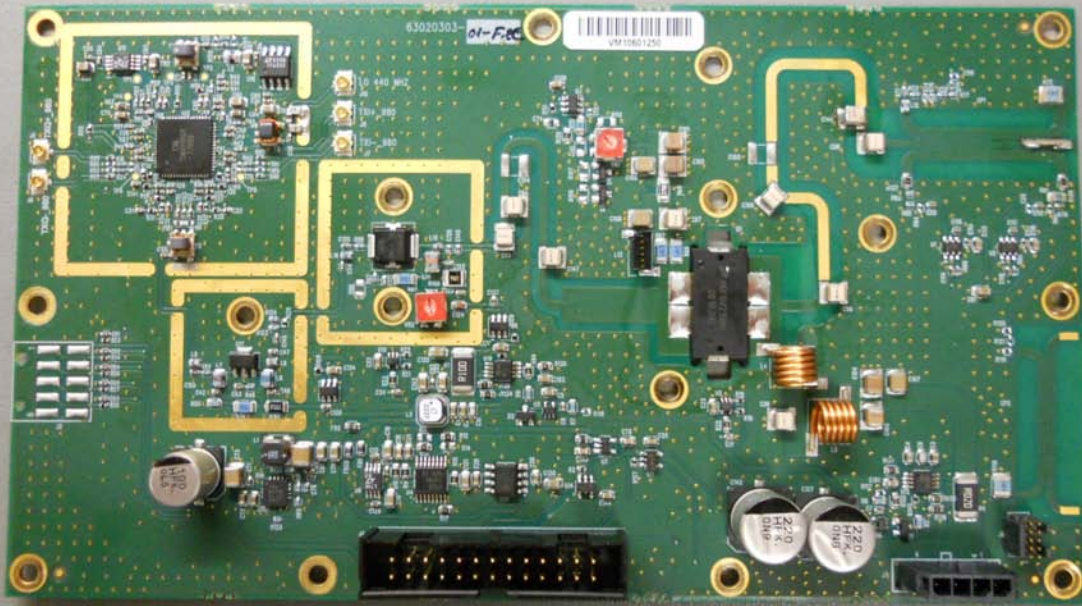
Power Supply Board, Side View showing DC-DC Converter brick

63020 Locomotive Radio - Internal Pictures



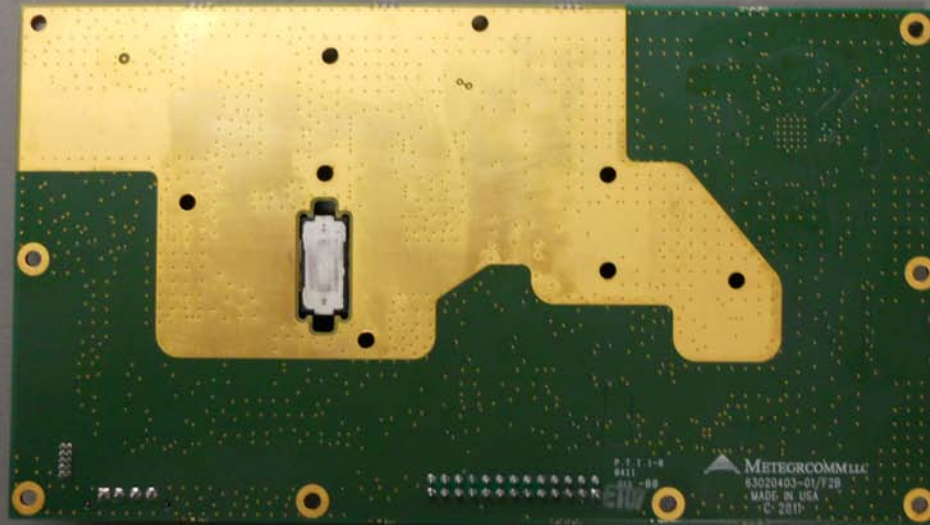
Power Supply Board, Bottom Side

63020 Locomotive Radio - Internal Pictures



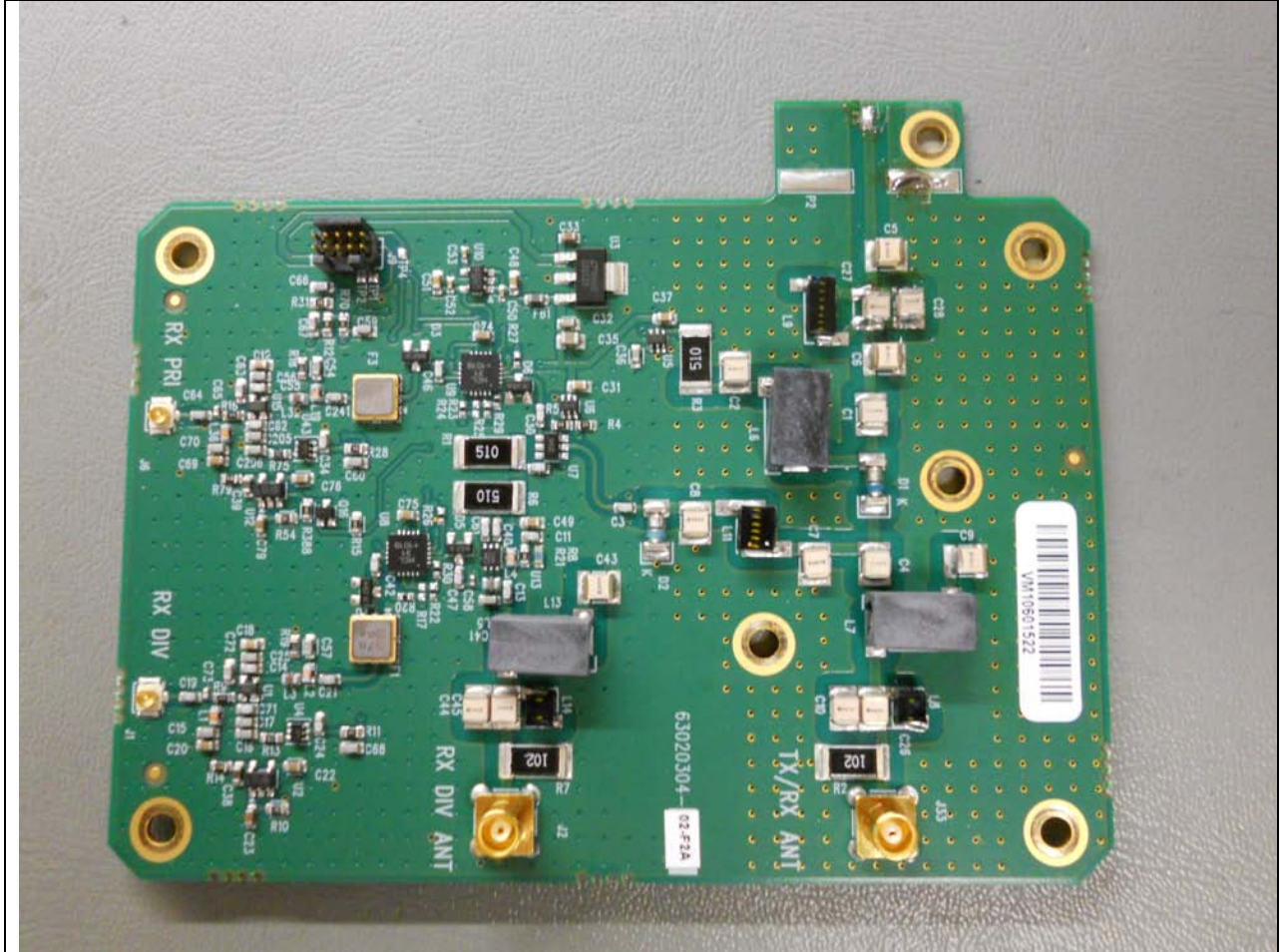
PA-Modulator Board, Top Side

63020 Locomotive Radio - Internal Pictures



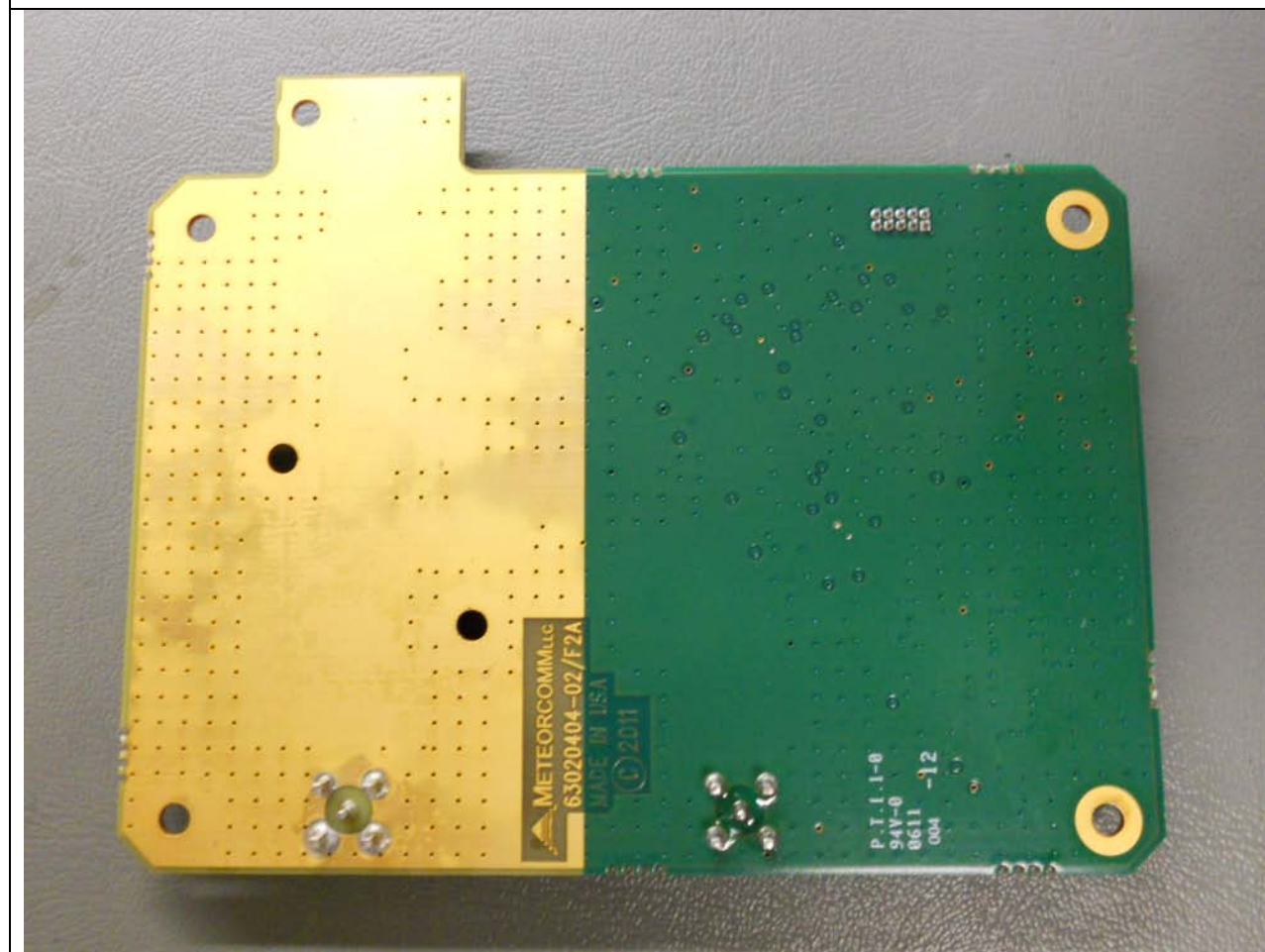
PA-Modulator Board, Bottom Side

63020 Locomotive Radio - Internal Pictures



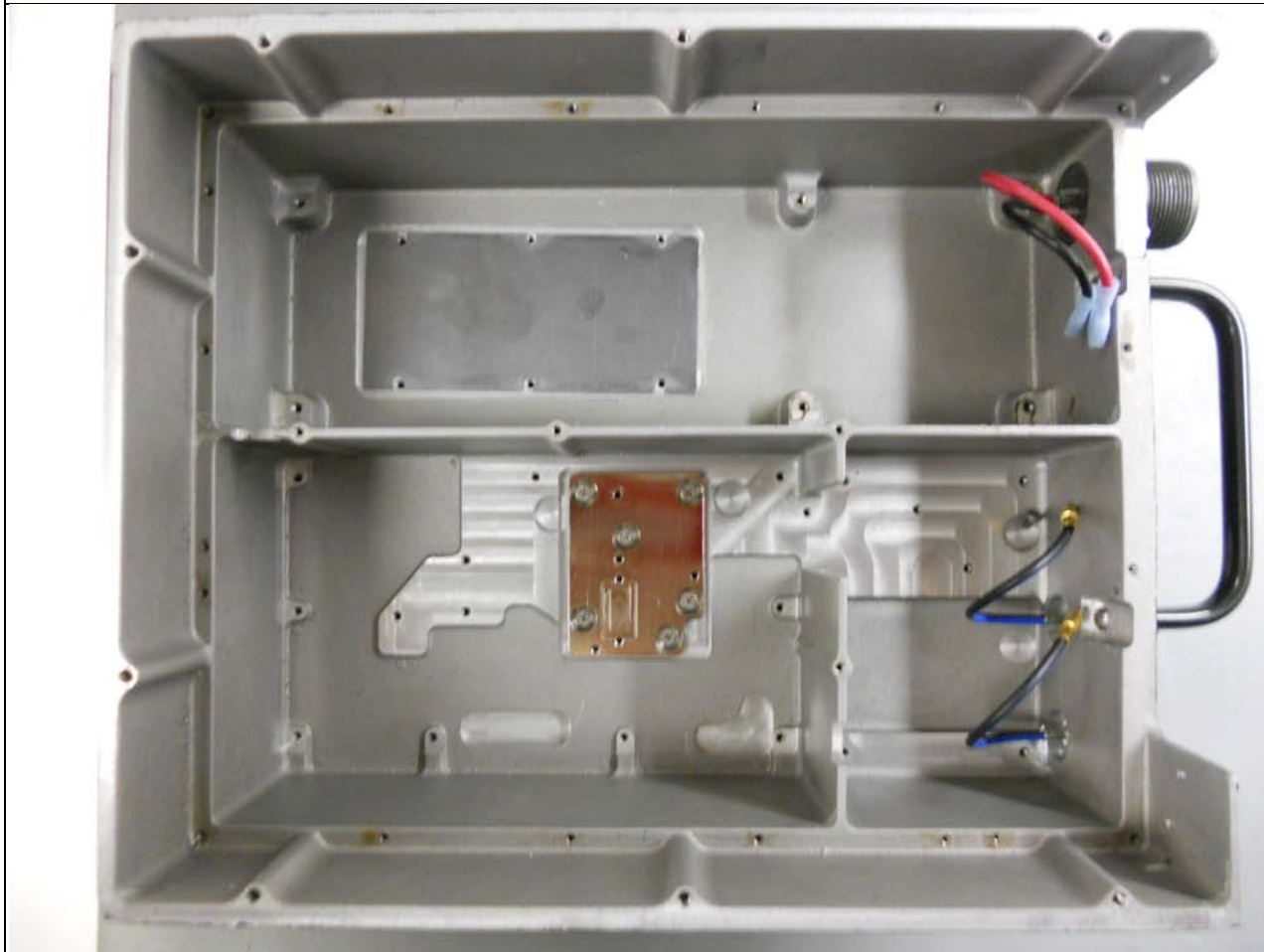
Front-End Board, Top Side

63020 Locomotive Radio - Internal Pictures



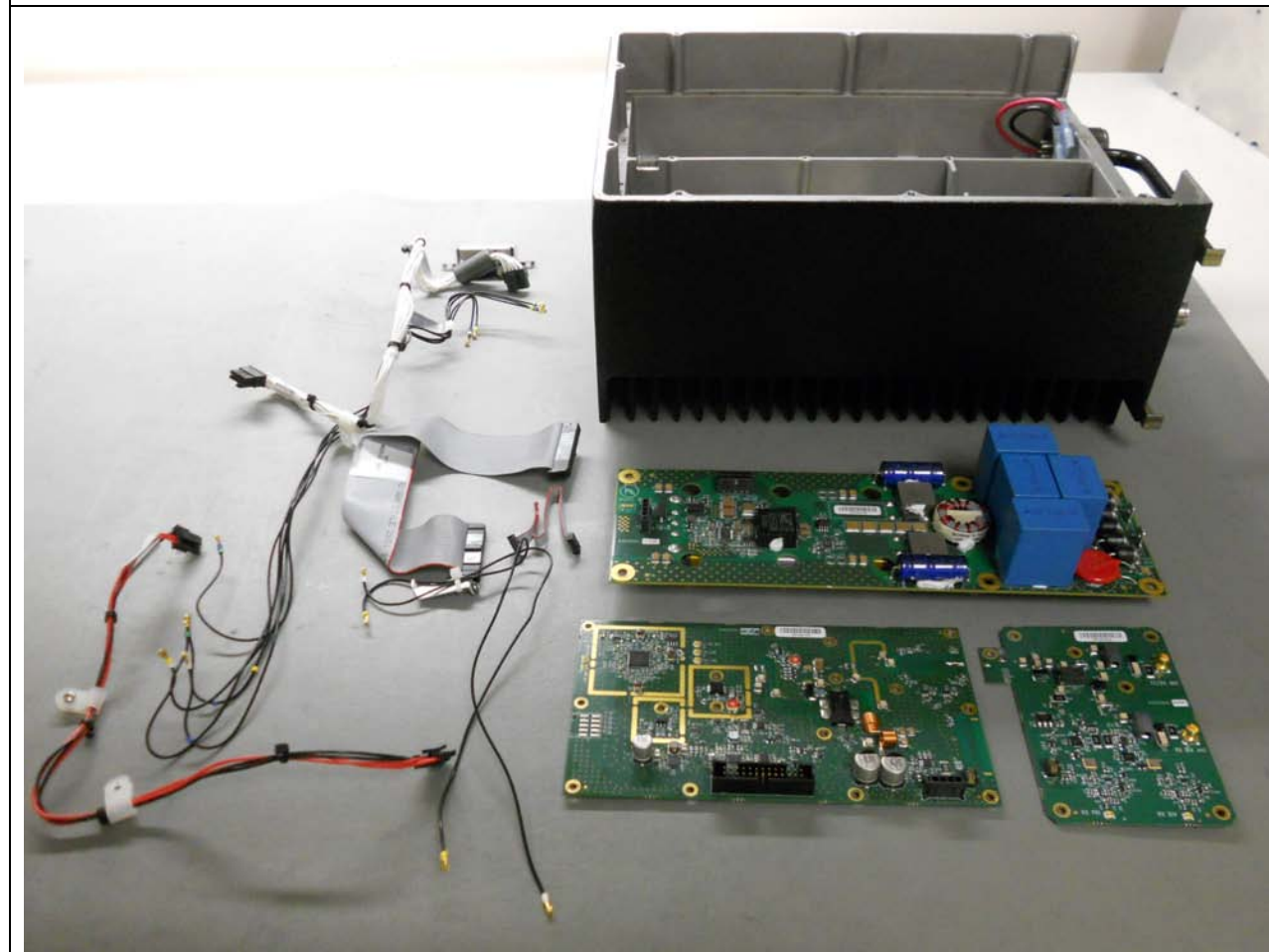
Front-End Board, Bottom Side

63020 Locomotive Radio - Internal Pictures



Heat Sink without Boards

63020 Locomotive Radio - Internal Pictures



Heatsink Assembly, Disassembled View