

## **Exhibit 5E- Internal Views (cont)**

### Internal Equipment Photos – High Band Transmitter

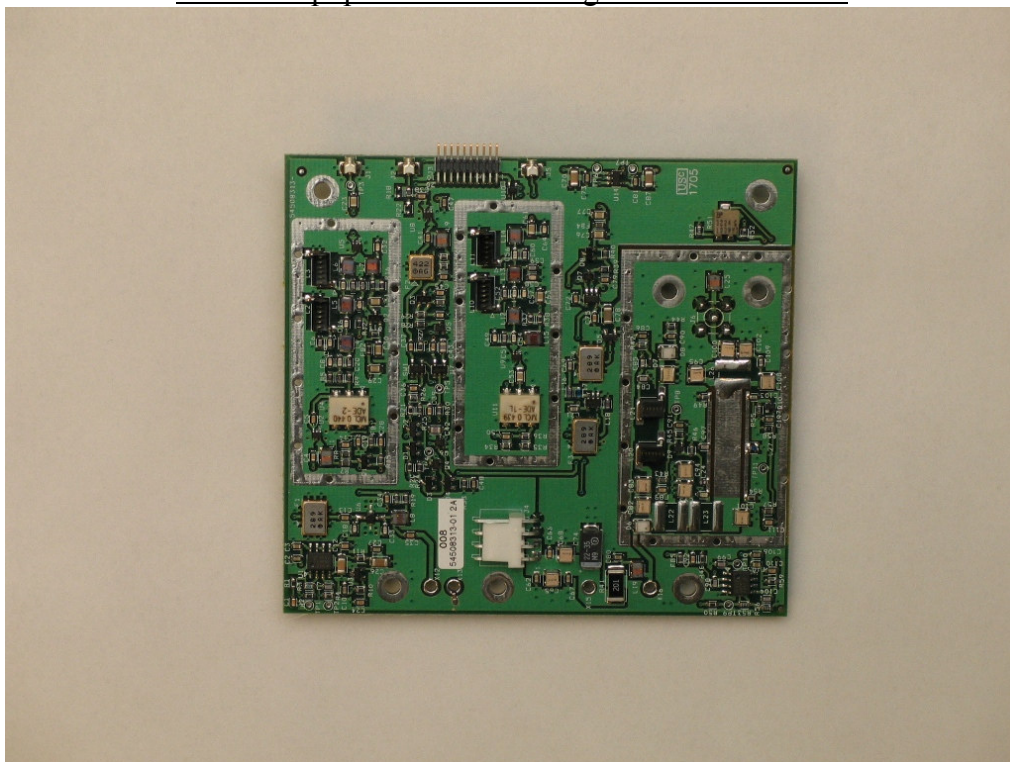


Figure 5E-1 High Band Board, top, with shields uninstalled

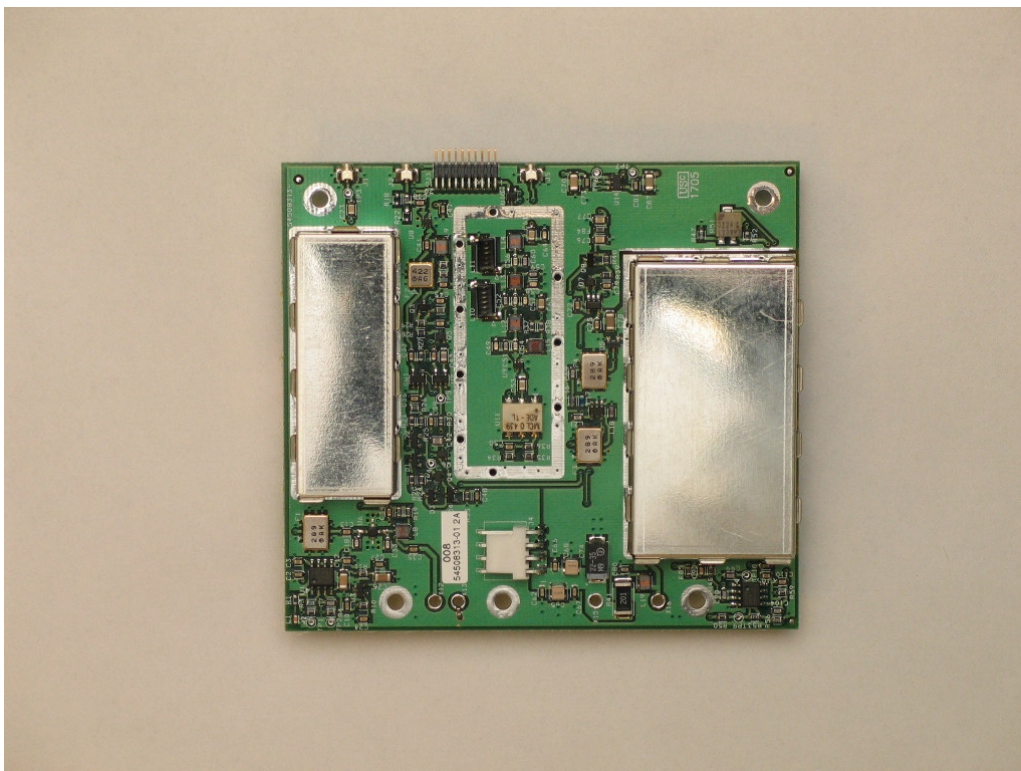


Figure 5E-2 High Band Assembly, top, with shields installed

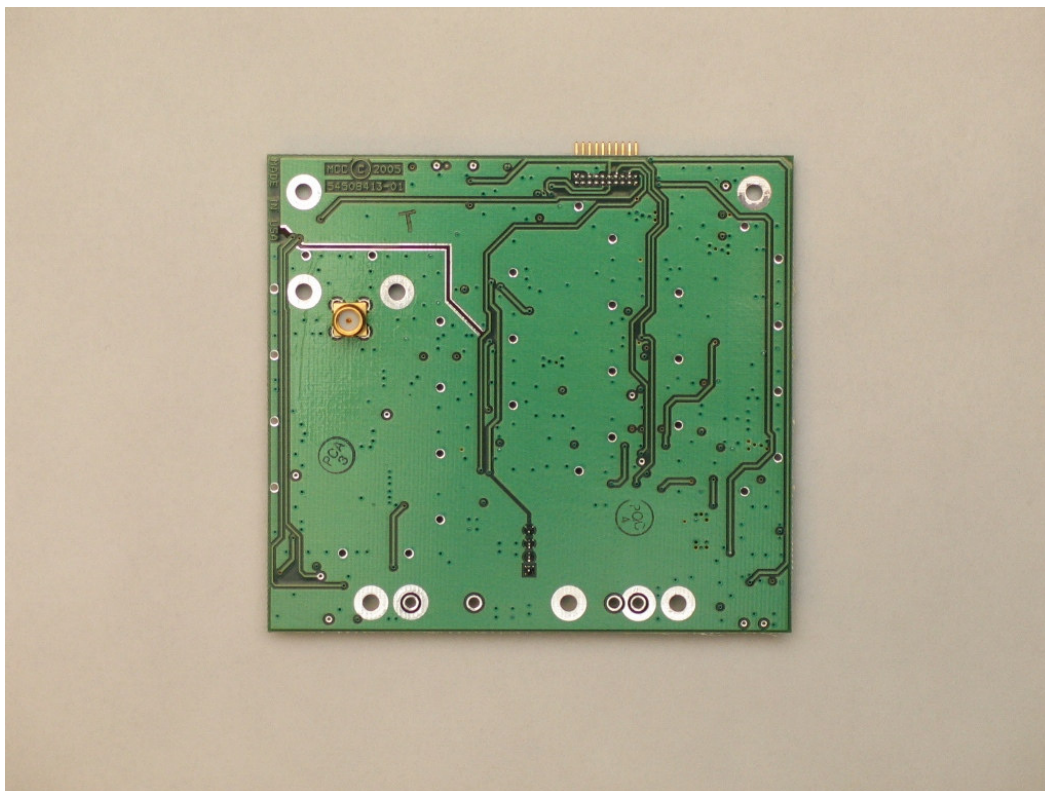


Figure 5E-3 High Band Board, bottom

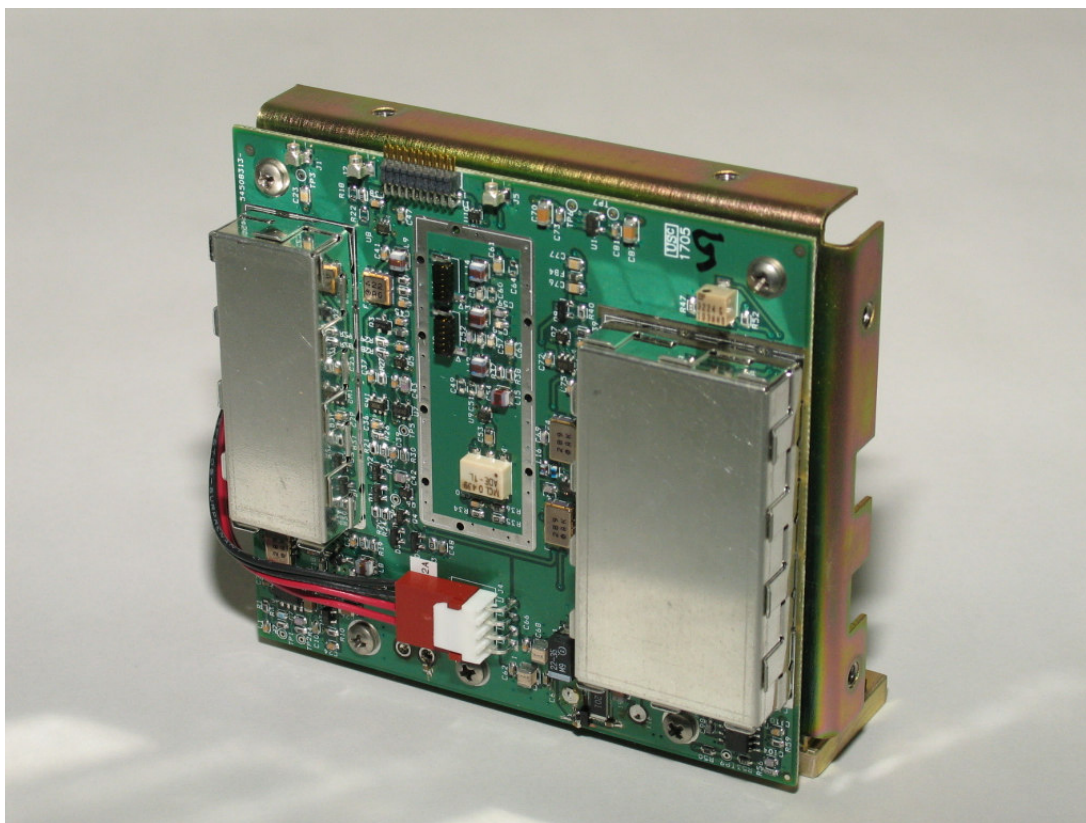


Figure 5E-4 High Band Assembly, top, with shields installed



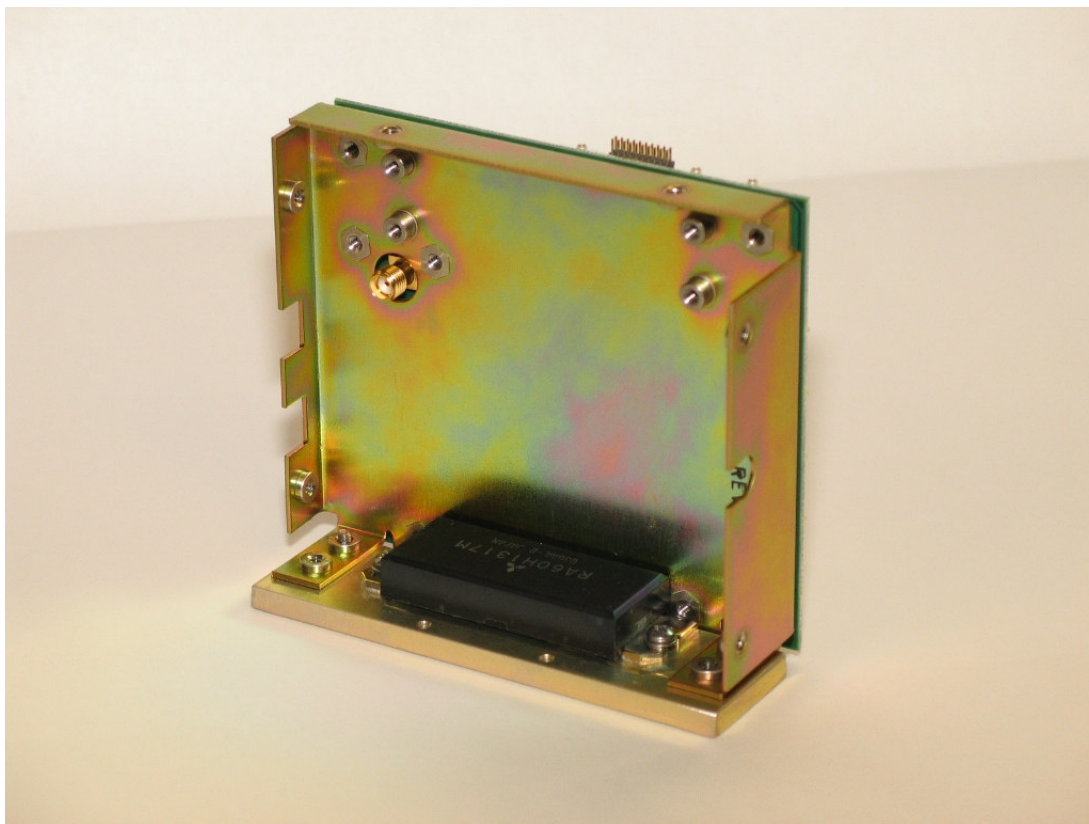


Figure 5E-5 High Band Assembly, rear, (RF power amp visible)

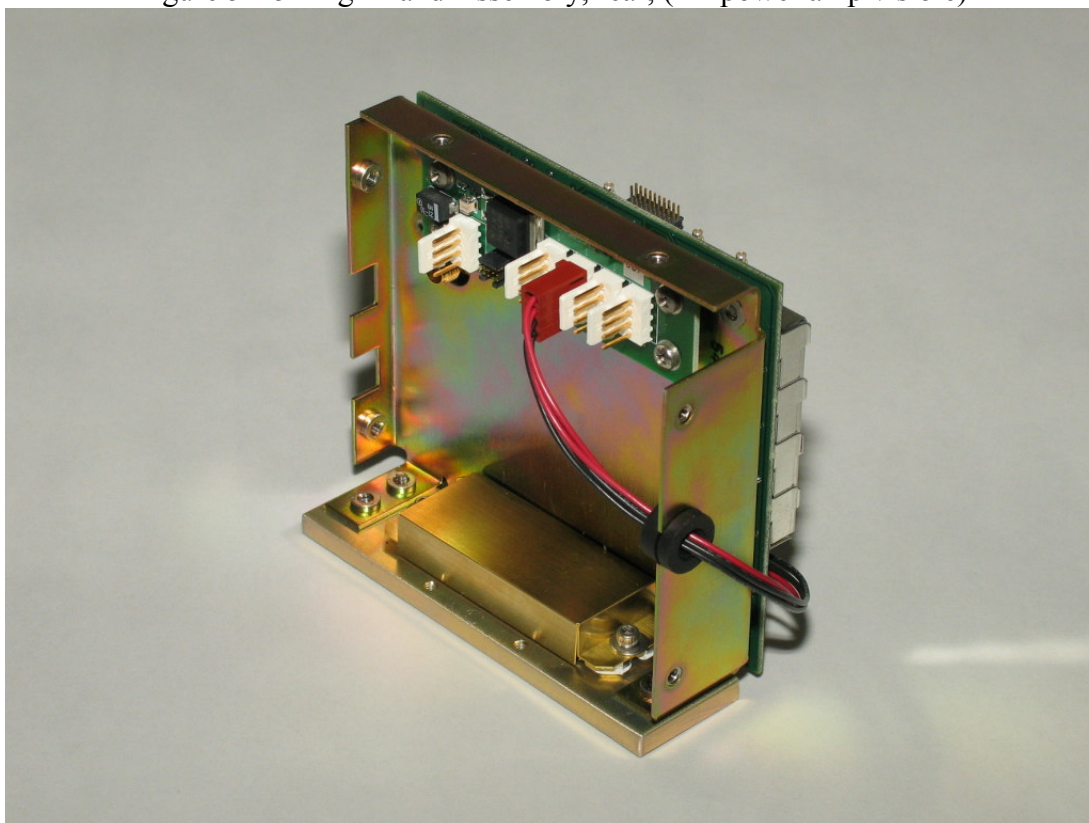


Figure 5E-6 High Band Assembly, rear, (RF PA shield and DC power Distribution Board installed)

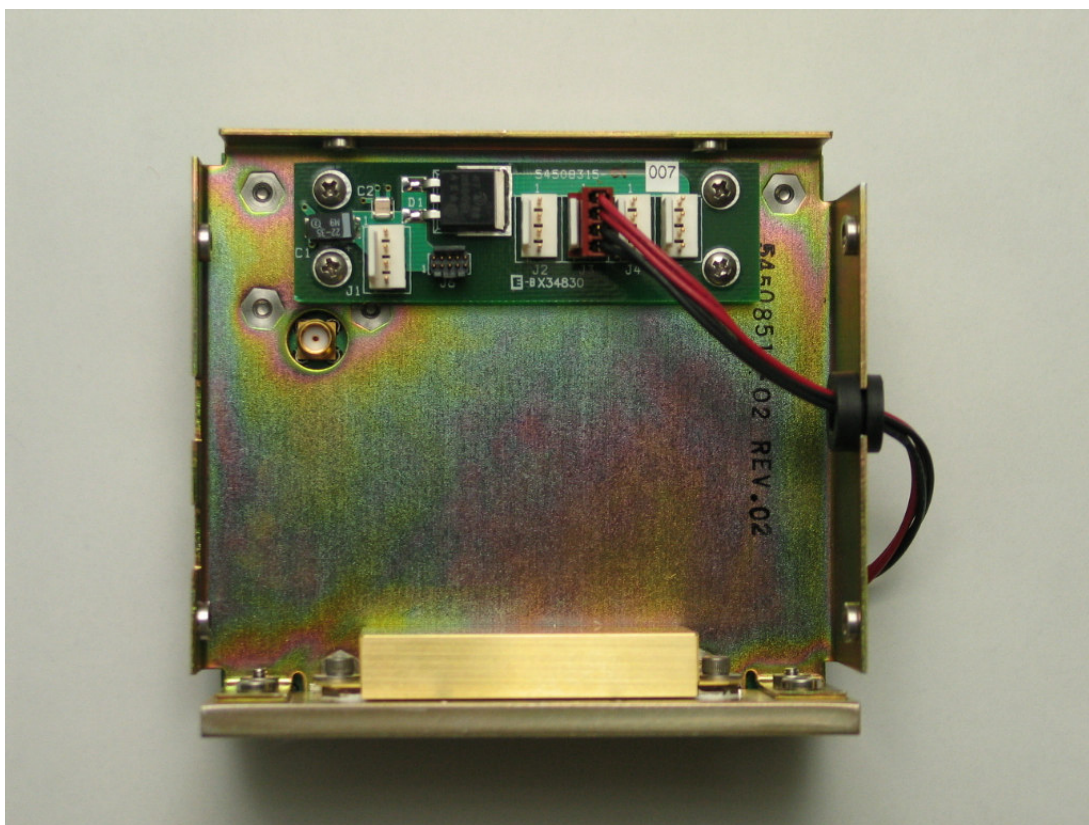


Figure 5E-7 High Band Assembly, rear, (RF PA shield and DC power Distribution Board installed)