

**Band n77: 5G NR (DFT-s-OFDM, 50% RB, 100 MHz, QPSK, 30 kHz) RBPosition:Mid
AntennaCfg:SISO, CHEEK**

Exposure Conditions

Band	Band n77	TSL Permittivity	38.6
Frequency [MHz] Channel Number	3858.000 657200	TSL Conductivity [S/m]	3.05
Group UID	5G NR FR1 TDD 10917-AAD	Phantom Section TSL	RightHead HSL
Conversion Factor	6.0	Test Distance [mm]	0.00

Hardware Setup

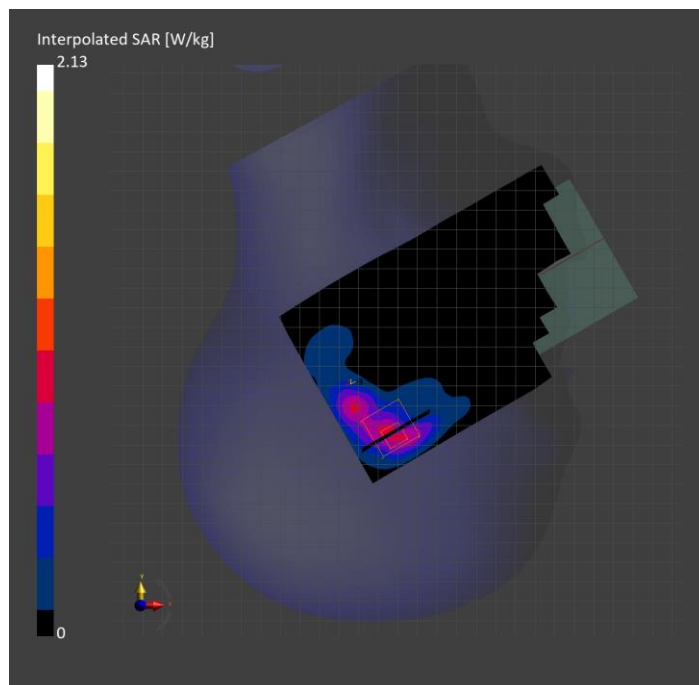
Probe Calibration Date	EX3DV4 - SN3749 2025-01-13	Phantom	Twin-SAM V5.0 (30deg probe tilt)
DAE Calibration Date	DAE4 Sn1380 2025-02-06	TSL Type	HBBL-600-10000
Software Version	16.4.0.5005		

Scan Setup

	Area Scan	Zoom Scan
Grid Extents [mm]	100.0 x 180.0	40.0 x 40.0 x 29.1
Grid Steps [mm]	10.0 x 10.0	5.0 x 5.0 x 1.4
Sensor Surface [mm]	3.0	1.4
Graded Grid	N/A	Yes
M2/M1 [> 30%]		72.7
Dist 3dB Peak [> Grid Steps Δx, Δy mm]		7.1
Peak SAR [W/kg], SAR Peak Location [mm]	N/A	2.13, 28.1, -335.6, -169.3

Measurement Results

	Area Scan	Zoom Scan
psSAR1g [W/Kg]	0.707	0.753
psSAR10g [W/Kg]	0.307	0.297
Power Drift [±0.2 dB]	N/A	-0.07



Band 30: LTE-FDD (SC-FDMA, 100% RB, 10 MHz, QPSK) AntennaCfg:SISO, BACK

Exposure Conditions

Band	Band 30	TSL Permittivity	40.5
Frequency [MHz] Channel Number	2310.000 27710	TSL Conductivity [S/m]	1.63
Group UID	LTE-FDD 10108-CAH	Phantom Section TSL	Flat HSL
Conversion Factor	7.02	Test Distance [mm]	5.00

Hardware Setup

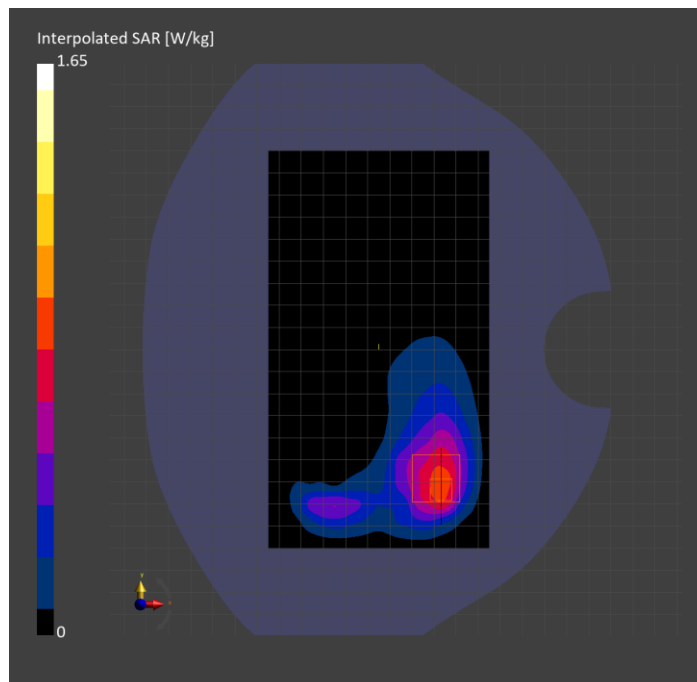
Probe Calibration Date	EX3DV4 - SN7779 2025-05-08	Phantom	Twin-SAM V8.0 (30deg probe tilt)
DAE Calibration Date	DAE4 Sn1787 2025-05-09	TSL Type	HBBL-600-10000
Software Version	16.4.0.5005		

Scan Setup

	Area Scan	Zoom Scan
Grid Extents [mm]	100.0 x 180.0	30.0 x 35.0 x 31.2
Grid Steps [mm]	10.0 x 10.0	5.0 x 5.0 x 1.5
Sensor Surface [mm]	3.0	1.4
Graded Grid	N/A	Yes
M2/M1 [> 30%]		79.7
Dist 3dB Peak [> Grid Steps Δx, Δy mm]		9.0
Peak SAR [W/kg], SAR Peak Location [mm]	N/A	1.65, 3.3, -63.5, -202.0

Measurement Results

	Area Scan	Zoom Scan
psSAR1g [W/Kg]	0.737	0.783
psSAR10g [W/Kg]	0.391	0.397
Power Drift [±0.2 dB]	N/A	-0.05



Custom Band: CW, EDGE LEFT

Exposure Conditions

Band	Custom Band	TSL Permittivity	39.1
Frequency [MHz] Channel Number	1626.000 1626000	TSL Conductivity [S/m]	1.21
Group UID	CW 0--	Phantom Section TSL	Flat HSL
Conversion Factor	8.8	Test Distance [mm]	0.00

Hardware Setup

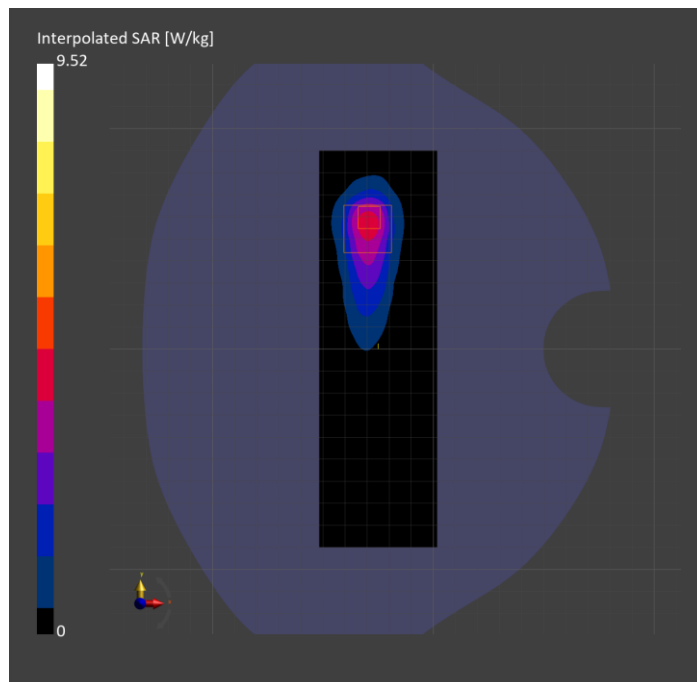
Probe Calibration Date	EX3DV4 - SN7356 2025-03-10	Phantom	Twin-SAM V8.0 (30deg probe tilt)
DAE Calibration Date	DAE4 Sn1239 2025-03-10	TSL Type	HBBL-600-10000
Software Version	16.4.0.5005		

Scan Setup

	Area Scan	Zoom Scan
Grid Extents [mm]	53.4 x 180.0	43.2 x 43.2 x 31.2
Grid Steps [mm]	8.9 x 15.0	5.4 x 5.4 x 1.5
Sensor Surface [mm]	3.0	1.4
Graded Grid	N/A	Yes
M2/M1 [> 30%]		71.3
Dist 3dB Peak [> Grid Steps Δx, Δy mm]		6.9
Peak SAR [W/kg], SAR Peak Location [mm]	N/A	9.52, -29.8, 54.4, -196.2

Measurement Results

	Area Scan	Zoom Scan
psSAR1g [W/Kg]	3.63	3.67
psSAR10g [W/Kg]	1.87	1.79
Power Drift [±0.2 dB]	N/A	0.05



WLAN 5GHz: IEEE 802.11ac WiFi (80MHz, MCS0, 99pc duty cycle), BACK

Exposure Conditions

Band	WLAN 5GHz	TSL Permittivity	34.5
Frequency [MHz] Channel Number	5775.000 155	TSL Conductivity [S/m]	5.09
Group UID	WLAN 10544-AAD	Phantom Section TSL	Flat HSL
Conversion Factor	5.52	Test Distance [mm]	5.00

Hardware Setup

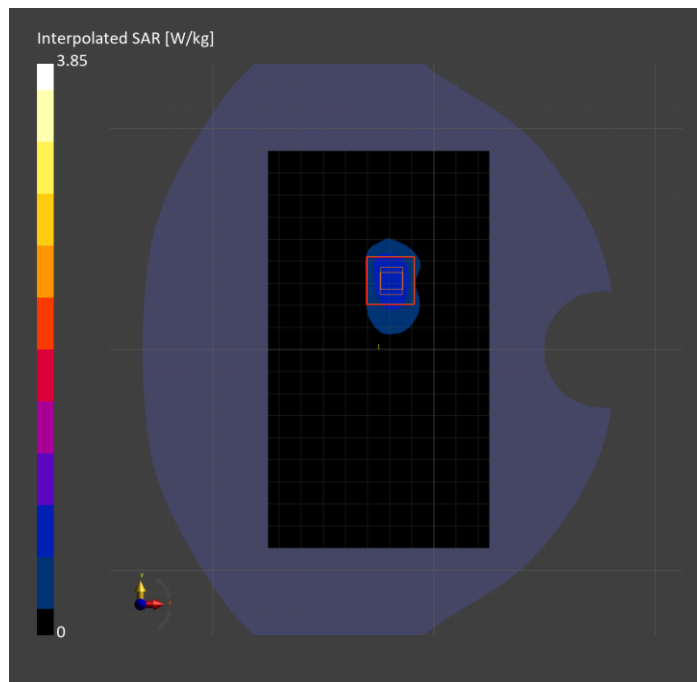
Probe Calibration Date	EX3DV4 - SN7915 2025-03-21	Phantom	Twin-SAM V8.0 (30deg probe tilt)
DAE Calibration Date	DAE4ip Sn1894 2025-03-18	TSL Type	HBBL-600-10000
Software Version	16.4.0.5005		

Scan Setup

	Area Scan	Zoom Scan
Grid Extents [mm]	100.0 x 180.0	24.0 x 24.0 x 22.9
Grid Steps [mm]	10.0 x 10.0	4.0 x 4.0 x 1.4
Sensor Surface [mm]	3.0	1.4
Graded Grid	N/A	Yes
M2/M1 [> 30%]		56.0
Dist 3dB Peak [> Grid Steps Δx, Δy mm]		6.4
Peak SAR [W/kg], SAR Peak Location [mm]	N/A	3.85, -19.3, 29.9, -202.0

Measurement Results

	Area Scan	Zoom Scan
psSAR1g [W/Kg]	0.718	0.851
psSAR10g [W/Kg]	0.268	0.279
Power Drift [±0.2 dB]	N/A	-0.18



**Band n77: 5G NR (DFT-s-OFDM, 50% RB, 100 MHz, QPSK, 30 kHz) RBPosition:Mid
AntennaCfg:SISO, CHEEK**

Exposure Conditions

Band	Band n77	TSL Permittivity	40.3
Frequency [MHz] Channel Number	3858.000 657200	TSL Conductivity [S/m]	3.05
Group UID	5G NR FR1 TDD 10917-AAD	Phantom Section TSL	RightHead HSL
Conversion Factor	6.51	Test Distance [mm]	0.00

Hardware Setup

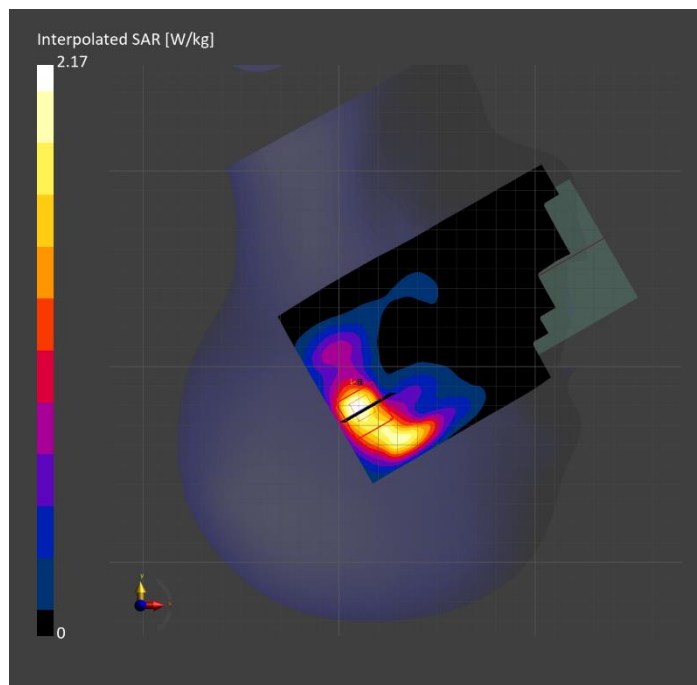
Probe Calibration Date	EX3DV4 - SN3990 Sensor X Disabled 2025-02-07	Phantom	Twin-SAM V5.0 (30deg probe tilt)
DAE Calibration Date	DAE4 Sn1545 2025-02-06	TSL Type	HBBL-600-10000
Software Version	16.4.0.5005		

Scan Setup

	Area Scan	Zoom Scan
Grid Extents [mm]	100.0 x 180.0	30.0 x 30.0 x 29.1
Grid Steps [mm]	10.0 x 10.0	5.0 x 5.0 x 1.4
Sensor Surface [mm]	3.0	1.4
Graded Grid	N/A	Yes
M2/M1 [> 30%]		73.8
Dist 3dB Peak [> Grid Steps Δx, Δy mm]		7.3
Peak SAR [W/kg], SAR Peak Location [mm]	N/A	2.17, 11.5, -321.1, -169.0

Measurement Results

	Area Scan	Zoom Scan
psSAR1g [W/Kg]	0.733	0.840
psSAR10g [W/Kg]	0.324	0.337
Power Drift [±0.2 dB]	N/A	-0.02



Band 30: LTE-FDD (SC-FDMA, 100% RB, 10 MHz, QPSK) AntennaCfg:SISO, BACK

Exposure Conditions

Band	Band 30	TSL Permittivity	40.5
Frequency [MHz] Channel Number	2310.000 27710	TSL Conductivity [S/m]	1.63
Group UID	LTE-FDD 10108-CAH	Phantom Section TSL	Flat HSL
Conversion Factor	7.02	Test Distance [mm]	5.00

Hardware Setup

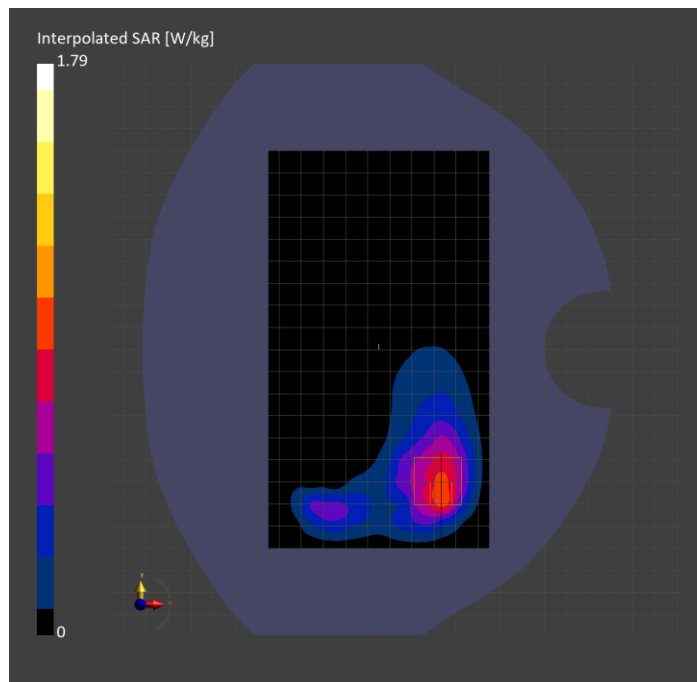
Probe Calibration Date	EX3DV4 - SN7779 2025-05-08	Phantom	Twin-SAM V8.0 (30deg probe tilt)
DAE Calibration Date	DAE4 Sn1787 2025-05-09	TSL Type	HBBL-600-10000
Software Version	16.4.0.5005		

Scan Setup

	Area Scan	Zoom Scan
Grid Extents [mm]	100.0 x 180.0	40.0 x 40.0 x 31.2
Grid Steps [mm]	10.0 x 10.0	5.0 x 5.0 x 1.5
Sensor Surface [mm]	3.0	1.4
Graded Grid	N/A	Yes
M2/M1 [> 30%]		79.4
Dist 3dB Peak [> Grid Steps Δx, Δy mm]		8.1
Peak SAR [W/kg], SAR Peak Location [mm]	N/A	1.79, 3.2, -65.0, -202.0

Measurement Results

	Area Scan	Zoom Scan
psSAR1g [W/Kg]	0.779	0.828
psSAR10g [W/Kg]	0.410	0.409
Power Drift [±0.2 dB]	N/A	0.05



Custom Band: CW, EDGE LEFT

Exposure Conditions

Band	Custom Band	TSL Permittivity	39.1
Frequency [MHz] Channel Number	1626.000 1626000	TSL Conductivity [S/m]	1.21
Group UID	CW 0--	Phantom Section TSL	Flat HSL
Conversion Factor	8.8	Test Distance [mm]	0.00

Hardware Setup

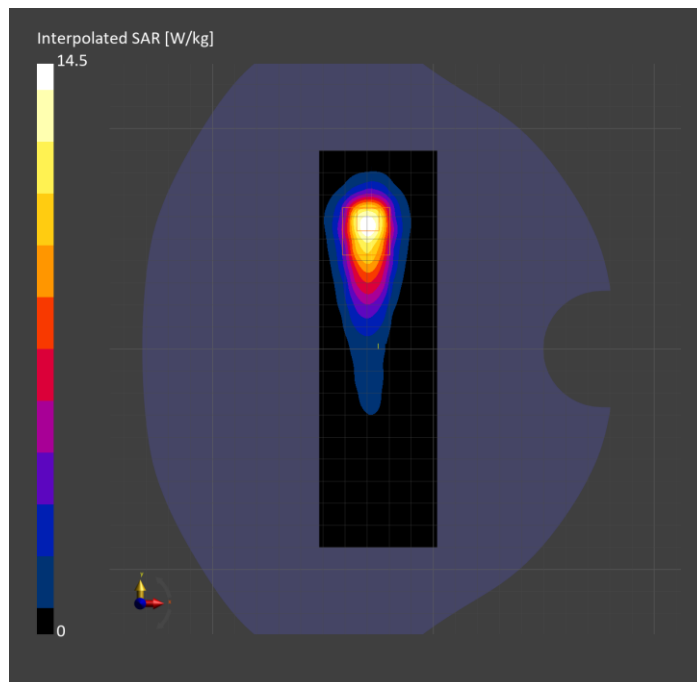
Probe Calibration Date	EX3DV4 - SN7356 2025-03-10	Phantom	Twin-SAM V8.0 (30deg probe tilt)
DAE Calibration Date	DAE4 Sn1239 2025-03-10	TSL Type	HBBL-600-10000
Software Version	16.4.0.5005		

Scan Setup

	Area Scan	Zoom Scan
Grid Extents [mm]	53.4 x 180.0	49.5 x 49.5 x 33.4
Grid Steps [mm]	8.9 x 15.0	4.5 x 4.5 x 1.4
Sensor Surface [mm]	3.0	1.4
Graded Grid	N/A	Yes
M2/M1 [> 30%]		72.0
Dist 3dB Peak [> Grid Steps Δx, Δy mm]		5.5
Peak SAR [W/kg], SAR Peak Location [mm]	N/A	14.5, -30.4, 53.4, -196.2

Measurement Results

	Area Scan	Zoom Scan
psSAR1g [W/Kg]	4.85	4.77
psSAR10g [W/Kg]	2.44	2.23
Power Drift [±0.2 dB]	N/A	-0.02



U-NII-2C Standalone: IEEE 802.11ac WiFi (80MHz, MCS0, 99pc duty cycle), BACK

Exposure Conditions

Band	U-NII-2C Standalone	TSL Permittivity	36.7
Frequency [MHz] Channel Number	5610.000 122	TSL Conductivity [S/m]	5.15
Group UID	WLAN 10544-AAD	Phantom Section TSL	Flat HSL
Conversion Factor	5.0	Test Distance [mm]	5.00

Hardware Setup

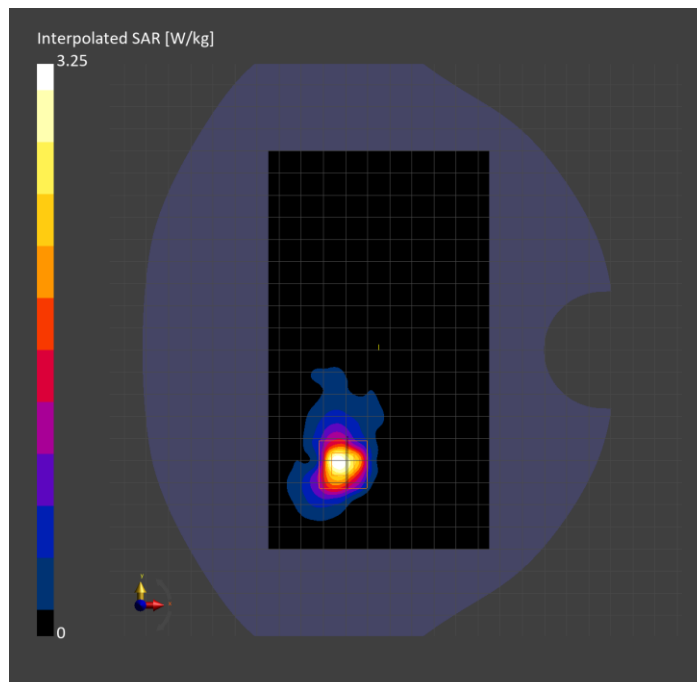
Probe Calibration Date	EX3DV4 - SN7820 2025-05-08	Phantom	Twin-SAM V8.0 (30deg probe tilt)
DAE Calibration Date	DAE4 Sn1797 2025-05-09	TSL Type	HBBL-600-10000
Software Version	16.4.0.5005		

Scan Setup

	Area Scan	Zoom Scan
Grid Extents [mm]	100.0 x 180.0	24.0 x 24.0 x 22.9
Grid Steps [mm]	10.0 x 10.0	4.0 x 4.0 x 1.4
Sensor Surface [mm]	3.0	1.4
Graded Grid	N/A	Yes
M2/M1 [> 30%]		61.9
Dist 3dB Peak [> Grid Steps Δx, Δy mm]		7.2
Peak SAR [W/kg], SAR Peak Location [mm]	N/A	3.25, -41.1, -51.8, -202.0

Measurement Results

	Area Scan	Zoom Scan
psSAR1g [W/Kg]	0.728	0.800
psSAR10g [W/Kg]	0.230	0.242
Power Drift [±0.2 dB]	N/A	-0.04



**Band n77: 5G NR (DFT-s-OFDM, 50% RB, 100 MHz, QPSK, 30 kHz) RBPosition:Mid
AntennaCfg:SISO, CHEEK**

Exposure Conditions

Band	Band n77	TSL Permittivity	39.3
Frequency [MHz] Channel Number	3858.000 657200	TSL Conductivity [S/m]	3.07
Group UID	5G NR FR1 TDD 10917-AAD	Phantom Section TSL	RightHead HSL
Conversion Factor	6.32	Test Distance [mm]	0.00

Hardware Setup

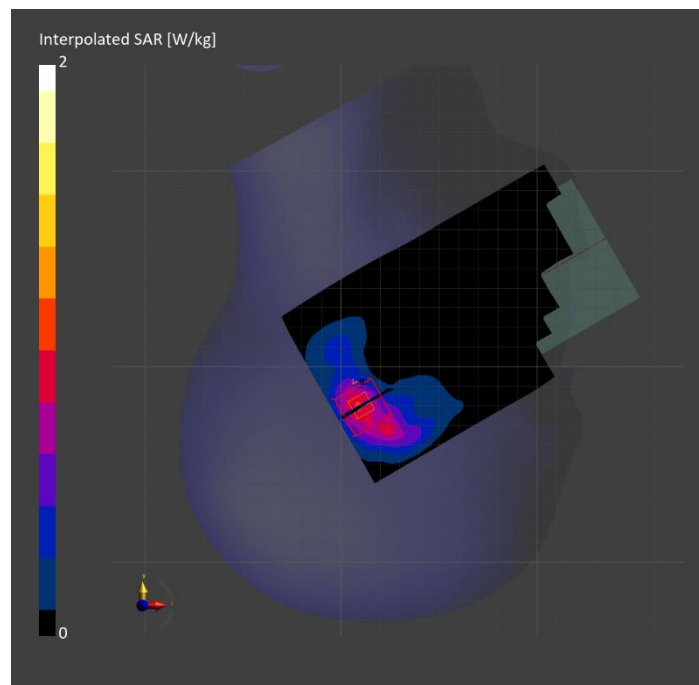
Probe Calibration Date	EX3DV4 - SN7448 2025-02-10	Phantom	Twin-SAM V5.0 (30deg probe tilt)
DAE Calibration Date	DAE4 Sn1377 2024-09-04	TSL Type	HBBL-600-10000
Software Version	16.4.0.5005		

Scan Setup

	Area Scan	Zoom Scan
Grid Extents [mm]	100.0 x 180.0	30.0 x 30.0 x 29.1
Grid Steps [mm]	10.0 x 10.0	5.0 x 5.0 x 1.4
Sensor Surface [mm]	3.0	1.4
Graded Grid	N/A	Yes
M2/M1 [> 30%]		75.9
Dist 3dB Peak [> Grid Steps Δx, Δy mm]		8.1
Peak SAR [W/kg], SAR Peak Location [mm]	N/A	2.00, 9.8, -319.7, -168.8

Measurement Results

	Area Scan	Zoom Scan
psSAR1g [W/Kg]	0.740	0.796
psSAR10g [W/Kg]	0.327	0.328
Power Drift [±0.2 dB]	N/A	-0.09



Band 30: LTE-FDD (SC-FDMA, 100% RB, 10 MHz, QPSK) AntennaCfg:SISO, BACK

Exposure Conditions

Band	Band 30	TSL Permittivity	40.5
Frequency [MHz] Channel Number	2310.000 27710	TSL Conductivity [S/m]	1.63
Group UID	LTE-FDD 10108-CAH	Phantom Section TSL	Flat HSL
Conversion Factor	7.02	Test Distance [mm]	5.00

Hardware Setup

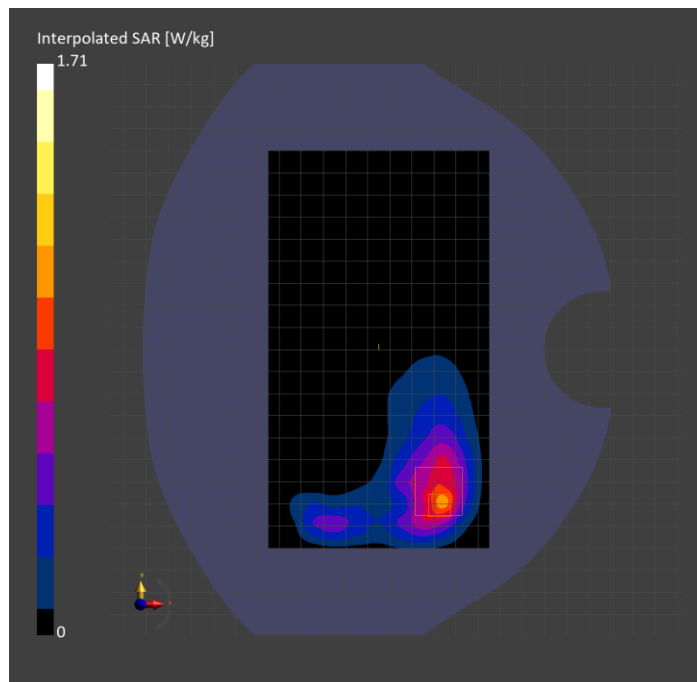
Probe Calibration Date	EX3DV4 - SN7779 2025-05-08	Phantom	Twin-SAM V8.0 (30deg probe tilt)
DAE Calibration Date	DAE4 Sn1787 2025-05-09	TSL Type	HBBL-600-10000
Software Version	16.4.0.5005		

Scan Setup

	Area Scan	Zoom Scan
Grid Extents [mm]	100.0 x 180.0	30.0 x 35.0 x 31.2
Grid Steps [mm]	10.0 x 10.0	5.0 x 5.0 x 1.5
Sensor Surface [mm]	3.0	1.4
Graded Grid	N/A	Yes
M2/M1 [> 30%]		79.5
Dist 3dB Peak [> Grid Steps Δx, Δy mm]		8.5
Peak SAR [W/kg], SAR Peak Location [mm]	N/A	1.71, 2.5, -70.6, -202.0

Measurement Results

	Area Scan	Zoom Scan
psSAR1g [W/Kg]	0.793	0.801
psSAR10g [W/Kg]	0.399	0.396
Power Drift [±0.2 dB]	N/A	-0.01



WLAN 5GHz: IEEE 802.11ac WiFi (80MHz, MCS0, 99pc duty cycle), BACK

Exposure Conditions

Band	WLAN 5GHz	TSL Permittivity	36.1
Frequency [MHz] Channel Number	5610.000 122	TSL Conductivity [S/m]	4.93
Group UID	WLAN 10544-AAD	Phantom Section TSL	Flat HSL
Conversion Factor	5.27	Test Distance [mm]	5.00

Hardware Setup

Probe Calibration Date	EX3DV4 - SN7501 2025-03-12	Phantom	Twin-SAM V8.0 (30deg probe tilt)
DAE Calibration Date	DAE4 Sn1352 2025-04-14	TSL Type	HBBL-600-10000
Software Version	16.4.0.5005		

Scan Setup

	Area Scan	Zoom Scan
Grid Extents [mm]	100.0 x 180.0	26.6 x 30.4 x 22.9
Grid Steps [mm]	10.0 x 10.0	3.8 x 3.8 x 1.4
Sensor Surface [mm]	3.0	1.4
Graded Grid	N/A	Yes
M2/M1 [> 30%]		54.4
Dist 3dB Peak [> Grid Steps Δx, Δy mm]		4.9
Peak SAR [W/kg], SAR Peak Location [mm]	N/A	4.44, -41.8, -55.4, -202.0

Measurement Results

	Area Scan	Zoom Scan
psSAR1g [W/Kg]	0.806	0.879
psSAR10g [W/Kg]	0.273	0.275
Power Drift [±0.2 dB]	N/A	0.00

