

**Band n77: 5G NR (DFT-s-OFDM, 50% RB, 100 MHz, QPSK, 30 kHz) RBPosition:Mid  
AntennaCfg:SISO, CHEEK**

**Exposure Conditions**

Band	Band n77	TSL Permittivity	35.4
Frequency [MHz]   Channel Number	3500.010   633334	TSL Conductivity [S/m]	2.77
Group   UID	5G NR FR1 TDD   10917-AAD	Phantom Section   TSL	LeftHead   HSL
Conversion Factor	6.21	Test Distance [mm]	0.00

**Hardware Setup**

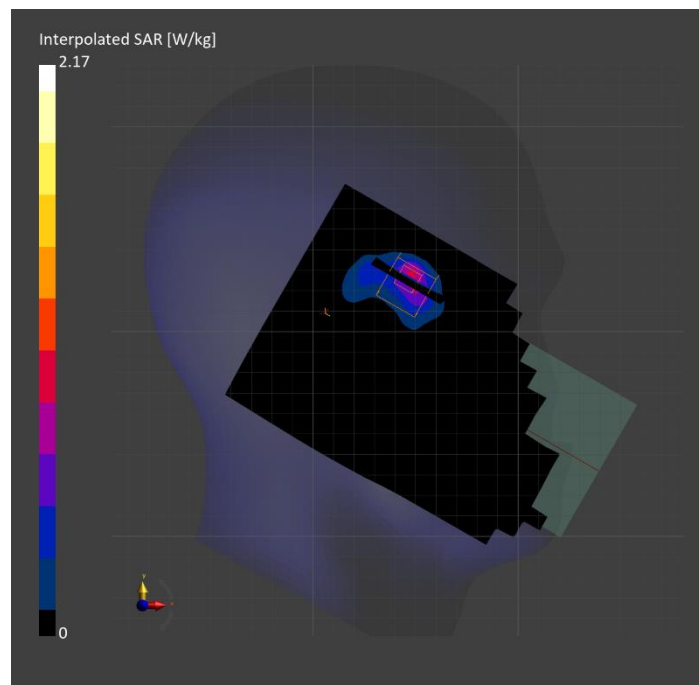
Probe   Calibration Date	EX3DV4 - SN7897   2024-10-30	Phantom	Twin-SAM V8.0 (30deg probe tilt)
DAE   Calibration Date	DAE4 Sn1798   2025-05-09	TSL Type	HBBL-600-10000
Software Version	16.4.0.5005		

**Scan Setup**

	Area Scan	Zoom Scan
Grid Extents [mm]	120.0 x 200.0	39.2 x 39.2 x 29.1
Grid Steps [mm]	10.0 x 10.0	4.9 x 4.9 x 1.4
Sensor Surface [mm]	3.0	1.4
Graded Grid	N/A	Yes
M2/M1 [> 30%]		68.2
Dist 3dB Peak [> Grid Steps Δx, Δy mm]		6.1
Peak SAR [W/kg], SAR Peak Location [mm]	N/A	2.17, 46.7, 326.2, -169.7

**Measurement Results**

	Area Scan	Zoom Scan
psSAR1g [W/Kg]	0.627	<b>0.690</b>
psSAR10g [W/Kg]	0.253	<b>0.254</b>
Power Drift [±0.2 dB]	N/A	0.12



# Band 4: UMTS-FDD (WCDMA), BACK

## Exposure Conditions

Band	Band 4	TSL Permittivity	40.2
Frequency [MHz]   Channel Number	1752.600   1513	TSL Conductivity [S/m]	1.35
Group   UID	WCDMA   10011-CAC	Phantom Section   TSL	Flat   HSL
Conversion Factor	8.15	Test Distance [mm]	5.00

## Hardware Setup

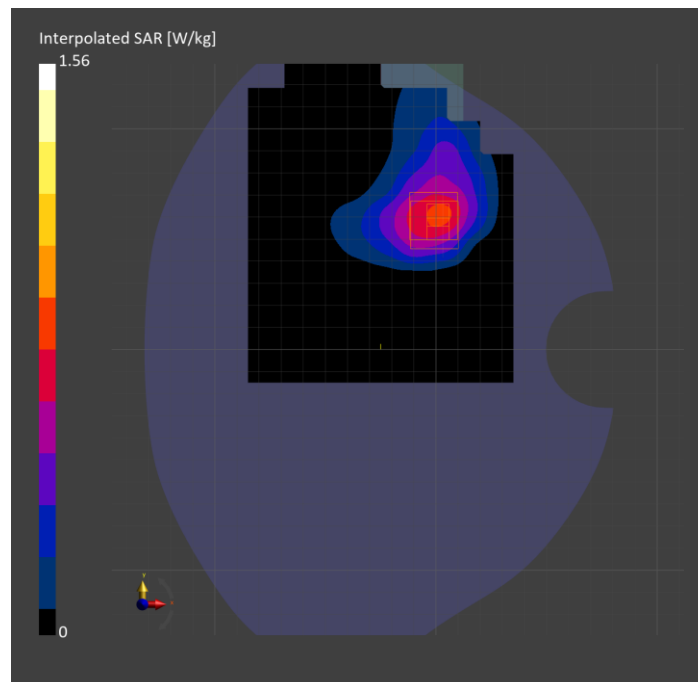
Probe   Calibration Date	EX3DV4 - SN7335   2025-01-13	Phantom	Twin-SAM V8.0 (30deg probe tilt)
DAE   Calibration Date	DAE4ip Sn1892   2025-03-04	TSL Type	HBBL-600-10000
Software Version	16.4.0.5005		

## Scan Setup

	Area Scan	Zoom Scan
Grid Extents [mm]	120.0 x 210.0	36.0 x 30.0 x 31.2
Grid Steps [mm]	15.0 x 15.0	6.0 x 6.0 x 1.5
Sensor Surface [mm]	3.0	1.4
Graded Grid	N/A	Yes
M2/M1 [> 30%]		79.1
Dist 3dB Peak [> Grid Steps Δx, Δy mm]		8.7
Peak SAR [W/kg], SAR Peak Location [mm]	N/A	1.56, 0.9, 54.6, -202.0

## Measurement Results

	Area Scan	Zoom Scan
psSAR1g [W/Kg]	0.693	<b>0.747</b>
psSAR10g [W/Kg]	0.402	<b>0.386</b>
Power Drift [±0.2 dB]	0.01	0.02



# Custom Band: CW, EDGE LEFT

## Exposure Conditions

Band	Custom Band	TSL Permittivity	40.4
Frequency [MHz]   Channel Number	1626.000   1626000	TSL Conductivity [S/m]	1.29
Group   UID	CW   0--	Phantom Section   TSL	Flat   HSL
Conversion Factor	8.16	Test Distance [mm]	0.00

## Hardware Setup

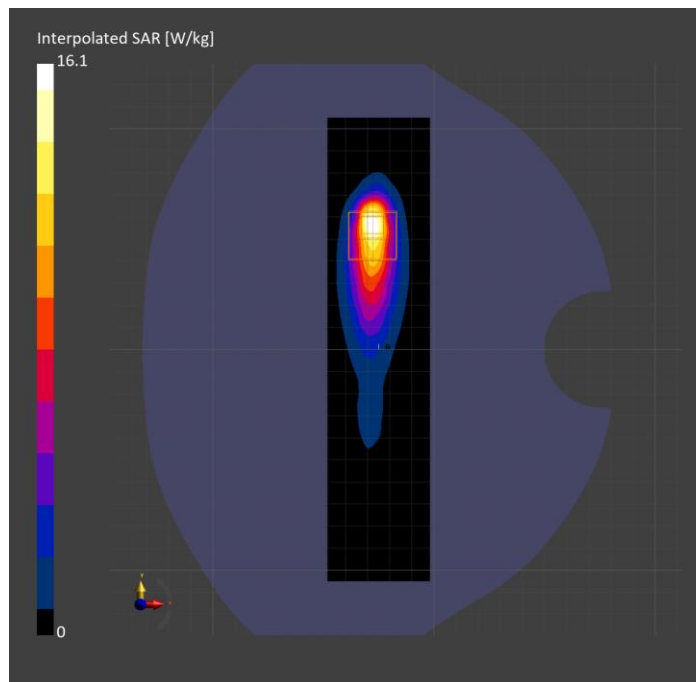
Probe   Calibration Date	EX3DV4 - SN7335   2025-01-13	Phantom	Twin-SAM V8.0 (30deg probe tilt)
DAE   Calibration Date	DAE4ip Sn1892   2025-03-04	TSL Type	HBBL-600-10000
Software Version	16.4.0.5005		

## Scan Setup

	Area Scan	Zoom Scan
Grid Extents [mm]	46.4 x 210.0	30.0 x 40.0 x 31.2
Grid Steps [mm]	5.8 x 15.0	2.5 x 2.5 x 1.2
Sensor Surface [mm]	3.0	1.4
Graded Grid	N/A	Yes
M2/M1 [> 30%]		68.8
Dist 3dB Peak [> Grid Steps Δx, Δy mm]		4.3
Peak SAR [W/kg], SAR Peak Location [mm]	N/A	16.1, -28.0, 51.3, -196.2

## Measurement Results

	Area Scan	Zoom Scan
psSAR1g [W/Kg]	4.36	4.22
psSAR10g [W/Kg]	1.98	1.87
Power Drift [±0.2 dB]	-0.05	0.18



**Band n77: 5G NR (DFT-s-OFDM, 50% RB, 100 MHz, QPSK, 30 kHz) RBPosition:Mid  
AntennaCfg:SISO, CHEEK**

**Exposure Conditions**

<b>Band</b>	Band n77	<b>TSL Permittivity</b>	35.4
<b>Frequency [MHz]   Channel Number</b>	3500.010   633334	<b>TSL Conductivity [S/m]</b>	2.77
<b>Group   UID</b>	5G NR FR1 TDD   10917-AAD	<b>Phantom Section   TSL</b>	LeftHead   HSL
<b>Conversion Factor</b>	6.21	<b>Test Distance [mm]</b>	0.00

**Hardware Setup**

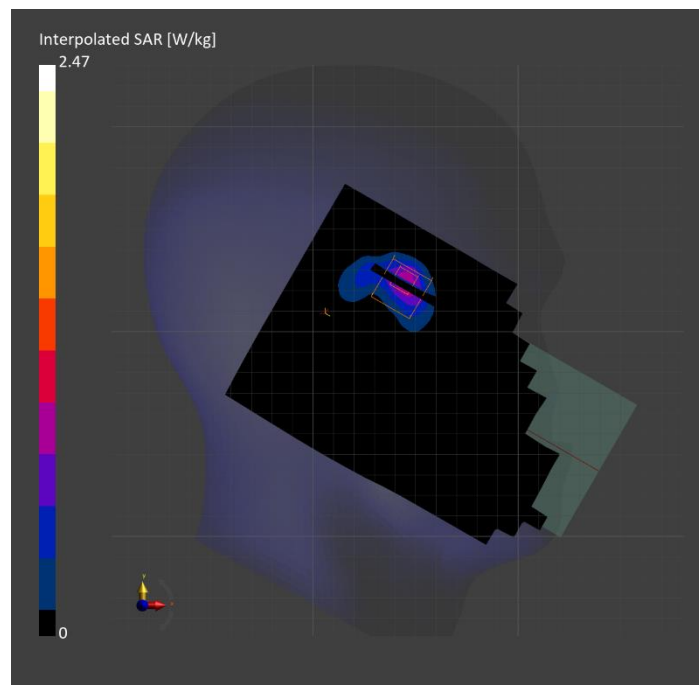
<b>Probe   Calibration Date</b>	EX3DV4 - SN7897   2024-10-30	<b>Phantom</b>	Twin-SAM V8.0 (30deg probe tilt)
<b>DAE   Calibration Date</b>	DAE4 Sn1798   2025-05-09	<b>TSL Type</b>	HBBL-600-10000
<b>Software Version</b>	16.4.0.5005		

**Scan Setup**

	<b>Area Scan</b>	<b>Zoom Scan</b>
<b>Grid Extents [mm]</b>	120.0 x 200.0	36.8 x 36.8 x 29.1
<b>Grid Steps [mm]</b>	10.0 x 10.0	4.6 x 4.6 x 1.4
<b>Sensor Surface [mm]</b>	3.0	1.4
<b>Graded Grid</b>	N/A	Yes
<b>M2/M1 [&gt; 30%]</b>		73.6
<b>Dist 3dB Peak [&gt; Grid Steps Δx, Δy mm]</b>		4.8
<b>Peak SAR [W/kg], SAR Peak Location [mm]</b>	N/A	2.47, 44.6, 325.5, -170.0

**Measurement Results**

	<b>Area Scan</b>	<b>Zoom Scan</b>
<b>psSAR1g [W/Kg]</b>	0.690	<b>0.818</b>
<b>psSAR10g [W/Kg]</b>	0.277	<b>0.290</b>
<b>Power Drift [±0.2 dB]</b>	N/A	0.03



# Band 4: UMTS-FDD (WCDMA), BACK

## Exposure Conditions

Band	Band 4	TSL Permittivity	40.2
Frequency [MHz]   Channel Number	1752.600   1513	TSL Conductivity [S/m]	1.35
Group   UID	WCDMA   10011-CAC	Phantom Section   TSL	Flat   HSL
Conversion Factor	8.15	Test Distance [mm]	5.00

## Hardware Setup

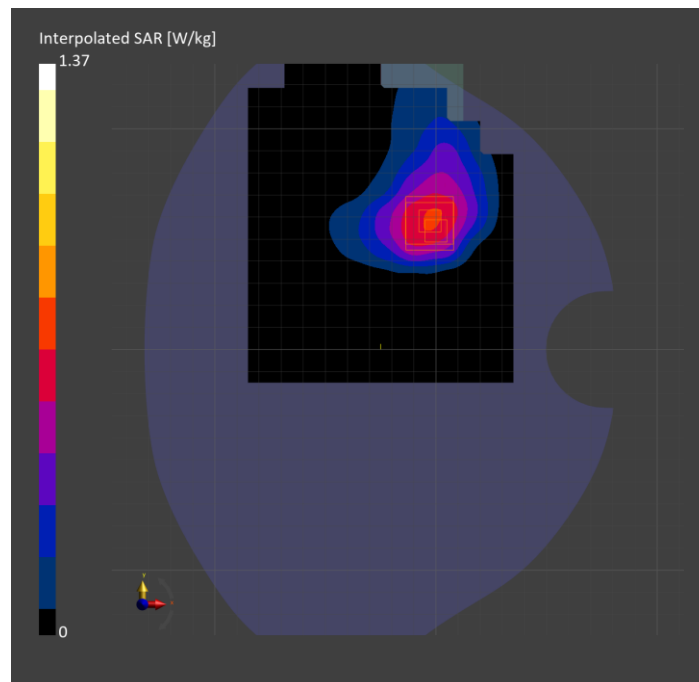
Probe   Calibration Date	EX3DV4 - SN7335   2025-01-13	Phantom	Twin-SAM V8.0 (30deg probe tilt)
DAE   Calibration Date	DAE4ip Sn1892   2025-03-04	TSL Type	HBBL-600-10000
Software Version	16.4.0.5005		

## Scan Setup

	Area Scan	Zoom Scan
Grid Extents [mm]	120.0 x 210.0	42.0 x 42.0 x 31.2
Grid Steps [mm]	15.0 x 15.0	6.0 x 6.0 x 1.5
Sensor Surface [mm]	3.0	1.4
Graded Grid	N/A	Yes
M2/M1 [> 30%]		80.4
Dist 3dB Peak [> Grid Steps Δx, Δy mm]		8.5
Peak SAR [W/kg], SAR Peak Location [mm]	N/A	1.37, 0.0, 53.7, -202.0

## Measurement Results

	Area Scan	Zoom Scan
psSAR1g [W/Kg]	0.594	<b>0.683</b>
psSAR10g [W/Kg]	0.359	<b>0.358</b>
Power Drift [±0.2 dB]	-0.01	0.01



# Custom Band: CW, EDGE LEFT

## Exposure Conditions

Band	Custom Band	TSL Permittivity	40.4
Frequency [MHz]   Channel Number	1626.000   1626000	TSL Conductivity [S/m]	1.29
Group   UID	CW   0--	Phantom Section   TSL	Flat   HSL
Conversion Factor	8.16	Test Distance [mm]	0.00

## Hardware Setup

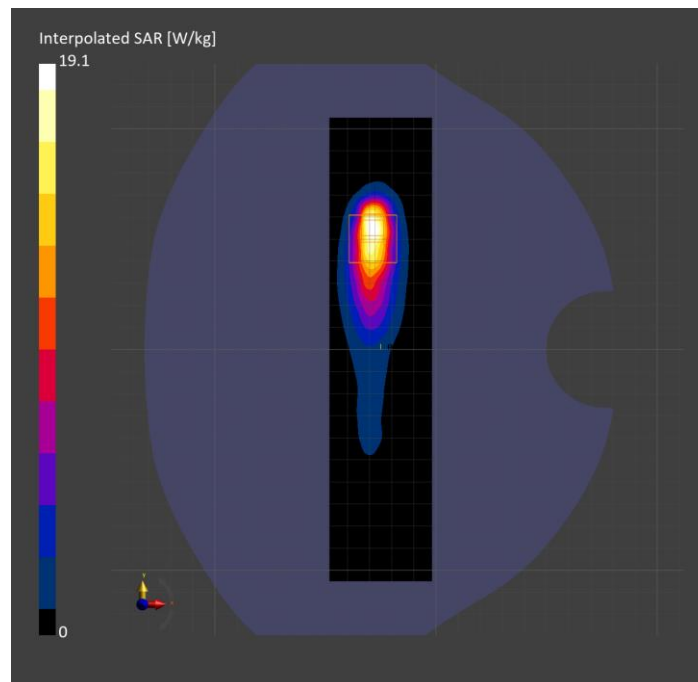
Probe   Calibration Date	EX3DV4 - SN7335   2025-01-13	Phantom	Twin-SAM V8.0 (30deg probe tilt)
DAE   Calibration Date	DAE4ip Sn1892   2025-03-04	TSL Type	HBBL-600-10000
Software Version	16.4.0.5005		

## Scan Setup

	Area Scan	Zoom Scan
Grid Extents [mm]	46.4 x 210.0	31.5 x 38.5 x 33.4
Grid Steps [mm]	5.8 x 15.0	3.5 x 3.5 x 1.4
Sensor Surface [mm]	3.0	1.4
Graded Grid	N/A	Yes
M2/M1 [> 30%]		61.5
Dist 3dB Peak [> Grid Steps Δx, Δy mm]		4.2
Peak SAR [W/kg], SAR Peak Location [mm]	N/A	19.1, -28.5, 50.2, -196.2

## Measurement Results

	Area Scan	Zoom Scan
psSAR1g [W/Kg]	5.24	5.12
psSAR10g [W/Kg]	2.37	2.18
Power Drift [±0.2 dB]	-0.00	-0.05



**Band n77: 5G NR (DFT-s-OFDM, 50% RB, 100 MHz, QPSK, 30 kHz) RBPosition:Mid  
AntennaCfg:SISO, CHEEK**

**Exposure Conditions**

<b>Band</b>	Band n77	<b>TSL Permittivity</b>	41.5
<b>Frequency [MHz]   Channel Number</b>	3500.010   633334	<b>TSL Conductivity [S/m]</b>	2.76
<b>Group   UID</b>	5G NR FR1 TDD   10917-AAD	<b>Phantom Section   TSL</b>	LeftHead   HSL
<b>Conversion Factor</b>	6.58	<b>Test Distance [mm]</b>	0.00

**Hardware Setup**

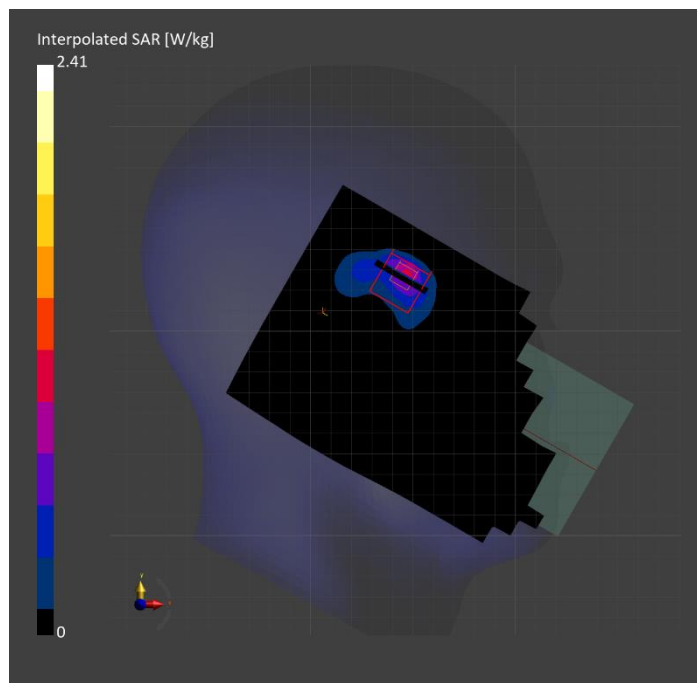
<b>Probe   Calibration Date</b>	EX3DV4 - SN3990 Sensor X Disabled   2025-02-07	<b>Phantom</b>	Twin-SAM V5.0 (30deg probe tilt)
<b>DAE   Calibration Date</b>	DAE4 Sn1545   2025-02-06	<b>TSL Type</b>	HBBL-600-10000
<b>Software Version</b>	16.4.0.5005		

**Scan Setup**

	<b>Area Scan</b>	<b>Zoom Scan</b>
<b>Grid Extents [mm]</b>	120.0 x 200.0	28.8 x 28.8 x 29.1
<b>Grid Steps [mm]</b>	10.0 x 10.0	4.8 x 4.8 x 1.4
<b>Sensor Surface [mm]</b>	3.0	1.4
<b>Graded Grid</b>	N/A	Yes
<b>M2/M1 [&gt; 30%]</b>		69.6
<b>Dist 3dB Peak [&gt; Grid Steps Δx, Δy mm]</b>		4.9
<b>Peak SAR [W/kg], SAR Peak Location [mm]</b>	N/A	2.41, 45.8, 327.5, -169.7

**Measurement Results**

	<b>Area Scan</b>	<b>Zoom Scan</b>
<b>psSAR1g [W/Kg]</b>	0.694	<b>0.746</b>
<b>psSAR10g [W/Kg]</b>	0.266	<b>0.276</b>
<b>Power Drift [±0.2 dB]</b>	N/A	0.02



# Band 4: UMTS-FDD (WCDMA), BACK

## Exposure Conditions

Band	Band 4	TSL Permittivity	40.2
Frequency [MHz]   Channel Number	1752.600   1513	TSL Conductivity [S/m]	1.35
Group   UID	WCDMA   10011-CAC	Phantom Section   TSL	Flat   HSL
Conversion Factor	8.15	Test Distance [mm]	5.00

## Hardware Setup

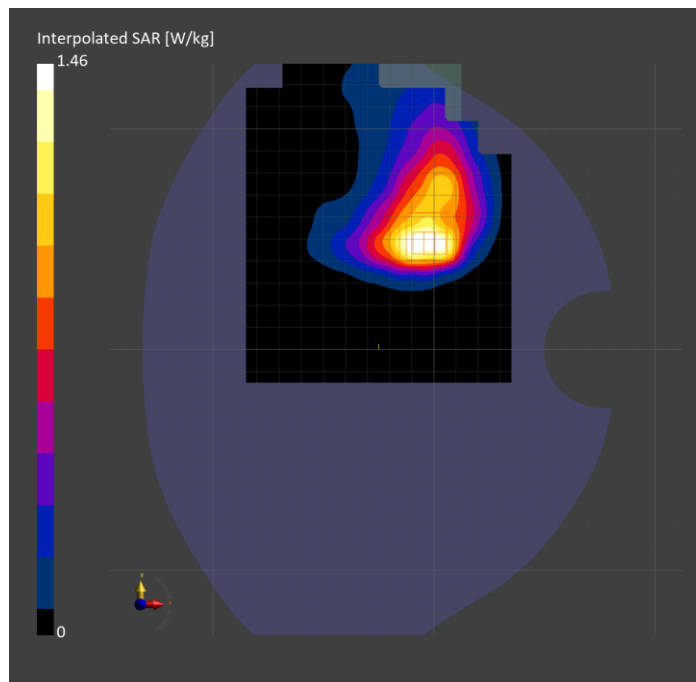
Probe   Calibration Date	EX3DV4 - SN7335   2025-01-13	Phantom	Twin-SAM V8.0 (30deg probe tilt)
DAE   Calibration Date	DAE4ip Sn1892   2025-03-04	TSL Type	HBBL-600-10000
Software Version	16.4.0.5005		

## Scan Setup

	Area Scan	Zoom Scan
Grid Extents [mm]	120.0 x 210.0	30.0 x 30.0 x 31.2
Grid Steps [mm]	15.0 x 15.0	6.0 x 6.0 x 1.5
Sensor Surface [mm]	3.0	1.4
Graded Grid	N/A	Yes
M2/M1 [> 30%]		76.8
Dist 3dB Peak [> Grid Steps Δx, Δy mm]		8.5
Peak SAR [W/kg], SAR Peak Location [mm]	N/A	1.46, 0.5, 48.2, -202.0

## Measurement Results

	Area Scan	Zoom Scan
psSAR1g [W/Kg]	0.686	<b>0.688</b>
psSAR10g [W/Kg]	0.384	<b>0.356</b>
Power Drift [±0.2 dB]	0.01	-0.02





# U-NII-7: IEEE 802.11ax (160MHz, MCS0, 99pc duty cycle), BACK

## Exposure Conditions

Band	U-NII-7	Phantom Section	5G
Frequency [MHz]   Channel Number	6665.0   143	Conversion Factor	1.0
Group   UID	WLAN, 10755-AAC	Position   Test Distance [mm]	BACK   2.00

## Hardware Setup

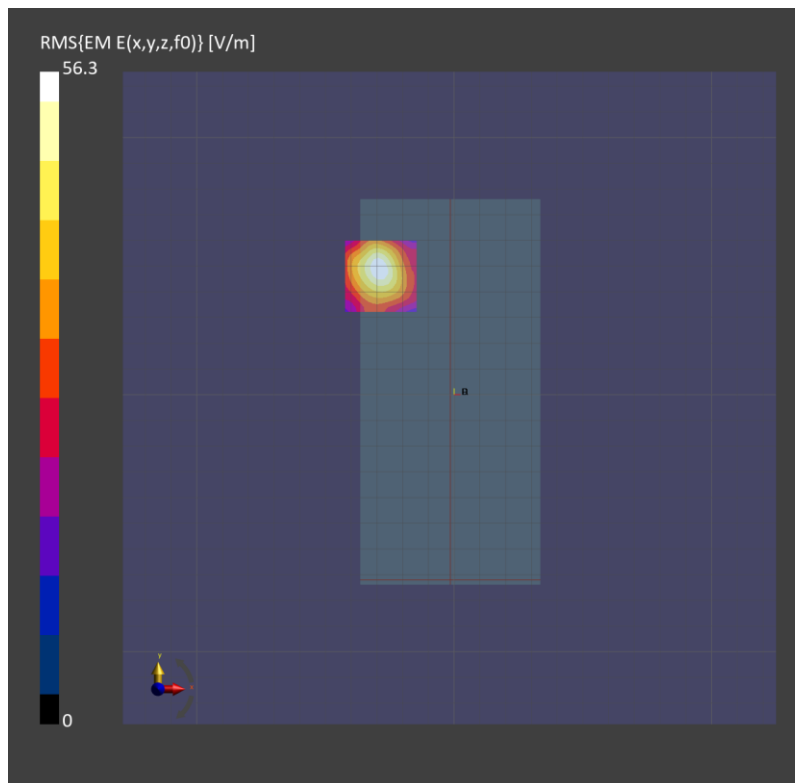
Probe   Calibration Date	EUmmWV4 - SN9619_F1-55GHz   2025-03-05	Phantom	mmWave   xxxx
DAE   Calibration Date	DAE4 Sn1540   2025-01-08	Medium	Air   -
Software Version	3.2.0.1840		

## Scan Setup

Scan Type	5G Scan	Grid Extents [mm]	25.0 x 25.0
Grid Steps [lambda]	0.0412 x 0.0412	Sensor Surface [mm]	2.0

## Measurement Results

Avg. Area [cm <sup>2</sup> ]	4.00
psPDn+ [W/m <sup>2</sup> ]	2.79
psPDtot+ [W/m <sup>2</sup> ]	3.34
psPDmod+ [W/m <sup>2</sup> ]	4.04
E <sub>max</sub> [V/m]	56.3
Power Drift [dB]	-0.08



# U-NII-5: IEEE 802.11ax (160MHz, MCS0, 99pc duty cycle), BACK

## Exposure Conditions

Band	U-NII-5	Phantom Section	5G
Frequency [MHz]   Channel Number	6025.0   15	Conversion Factor	1.0
Group   UID	WLAN, 10755-AAC	Position   Test Distance [mm]	BACK   2.00

## Hardware Setup

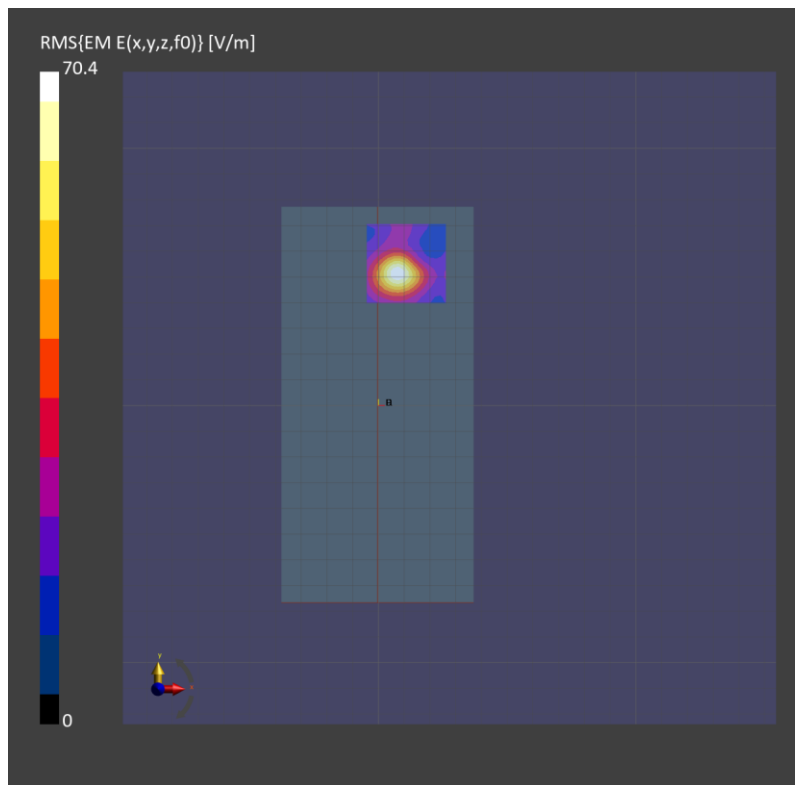
Probe   Calibration Date	EUmmWV4 - SN9619_F1-55GHz   2025-03-05	Phantom	mmWave   xxxx
DAE   Calibration Date	DAE4 Sn1540   2025-01-08	Medium	Air   -
Software Version	3.2.0.1840		

## Scan Setup

Scan Type	5G Scan	Grid Extents [mm]	25.0 x 25.0
Grid Steps [lambda]	0.0412 x 0.0412	Sensor Surface [mm]	2.0

## Measurement Results

Avg. Area [cm <sup>2</sup> ]	4.00
psPDn+ [W/m <sup>2</sup> ]	2.76
psPDtot+ [W/m <sup>2</sup> ]	3.41
psPDmod+ [W/m <sup>2</sup> ]	4.80
E <sub>max</sub> [V/m]	70.4
Power Drift [dB]	-0.09



# U-NII-5: IEEE 802.11ax (160MHz, MCS0, 99pc duty cycle), BACK

## Exposure Conditions

Band	U-NII-5	Phantom Section	5G
Frequency [MHz]   Channel Number	6025.0   15	Conversion Factor	1.0
Group   UID	WLAN, 10755-AAC	Position   Test Distance [mm]	BACK   2.00

## Hardware Setup

Probe   Calibration Date	EUmmWV4 - SN9619_F1-55GHz   2025-03-05	Phantom	mmWave   xxxx
DAE   Calibration Date	DAE4 Sn1540   2025-01-08	Medium	Air   -
Software Version	3.2.0.1840		

## Scan Setup

Scan Type	5G Scan	Grid Extents [mm]	25.0 x 25.0
Grid Steps [lambda]	0.0412 x 0.0412	Sensor Surface [mm]	2.0

## Measurement Results

Avg. Area [cm <sup>2</sup> ]	4.00
psPDn+ [W/m <sup>2</sup> ]	2.59
psPDtot+ [W/m <sup>2</sup> ]	2.89
psPDmod+ [W/m <sup>2</sup> ]	3.79
E <sub>max</sub> [V/m]	55.2
Power Drift [dB]	0.17

