

PCS 1900 RF Interference Potential Test Report

Hardware Setup

Probe | Calibration Date EF3DV3 - SN4041 | March 04, 2025
DAE | Calibration Date DAE4ip Sn1621 | April 10, 2025
Software Version 1.2.6.2199

Communication Systems

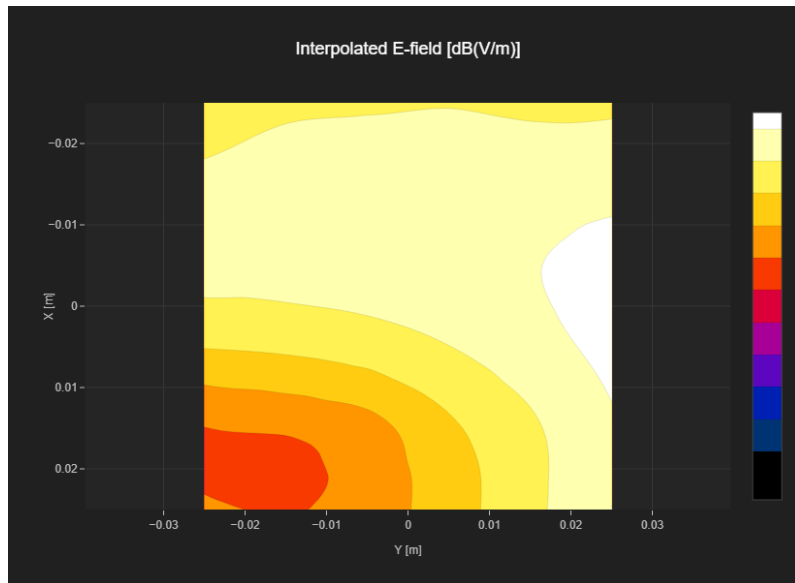
MIF 3.8
Channel | Frequency [MHz] 512 | 1850.2
Communication Systems' Name GPRS-FDD (TDMA, GMSK, TN 0)

Grid Settings

Extent X [mm]	50.0	Step X [mm]	10.0
Extent Y [mm]	50.0	Step Y [mm]	10.0
Distance [mm]	15.0		

Results

E _{max} [dBV/m]	21.0	E _{avg 50x50 Max} [dBV/m]	19.83
Drift [dB]	0.09	RFail [dBV/m]	23.63



PCS 1900 RF Interference Potential Test Report

Hardware Setup

Probe | Calibration Date EF3DV3 - SN4041 | March 04, 2025
DAE | Calibration Date DAE4ip Sn1621 | April 10, 2025
Software Version 1.2.6.2199

Communication Systems

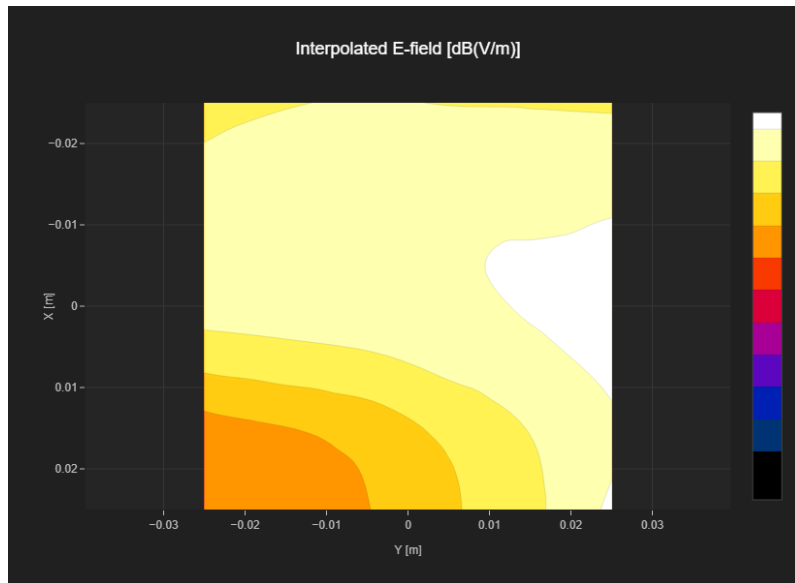
MIF 3.8
Channel | Frequency [MHz] 661 | 1880.0
Communication Systems' Name GPRS-FDD (TDMA, GMSK, TN 0)

Grid Settings

Extent X [mm]	50.0	Step X [mm]	10.0
Extent Y [mm]	50.0	Step Y [mm]	10.0
Distance [mm]	15.0		

Results

E _{max} [dBV/m]	20.9	E _{avg} 50x50 Max [dBV/m]	19.61
Drift [dB]	0.27	RFail [dBV/m]	23.41



PCS 1900 RF Interference Potential Test Report

Hardware Setup

Probe | Calibration Date EF3DV3 - SN4041 | March 04, 2025
DAE | Calibration Date DAE4ip Sn1621 | April 10, 2025
Software Version 1.2.6.2199

Communication Systems

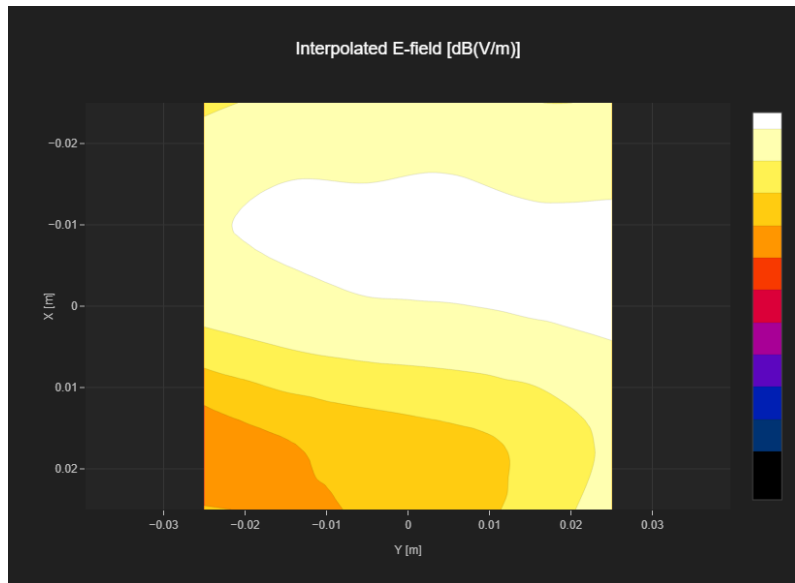
MIF 3.8
Channel | Frequency [MHz] 810 | 1909.8
Communication Systems' Name GPRS-FDD (TDMA, GMSK, TN 0)

Grid Settings

Extent X [mm]	50.0	Step X [mm]	10.0
Extent Y [mm]	50.0	Step Y [mm]	10.0
Distance [mm]	15.0		

Results

E _{max} [dBV/m]	21.5	E _{avg 50x50 Max} [dBV/m]	19.66
Drift [dB]	0.24	RFail [dBV/m]	23.46



PCS 1900 RF Interference Potential Test Report

Hardware Setup

Probe | Calibration Date EF3DV3 - SN4041 | March 04, 2025
DAE | Calibration Date DAE4ip Sn1621 | April 10, 2025
Software Version 1.2.6.2199

Communication Systems

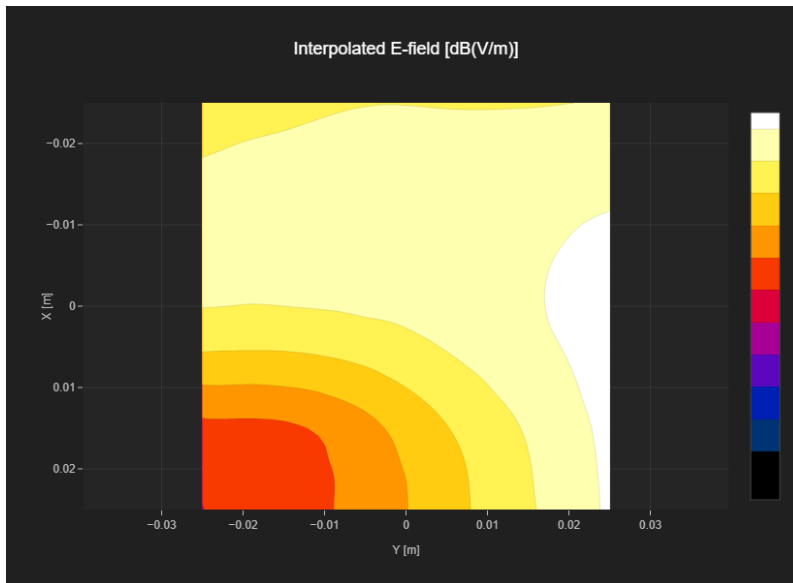
MIF 1.15
Channel | Frequency [MHz] 512 | 1850.2
Communication Systems' Name GPRS-FDD (TDMA, GMSK, TN 0-1)

Grid Settings

Extent X [mm]	50.0	Step X [mm]	10.0
Extent Y [mm]	50.0	Step Y [mm]	10.0
Distance [mm]	15.0		

Results

E _{max} [dBV/m]	23.21	E _{avg 50x50 Max} [dBV/m]	21.87
Drift [dB]	0.12	RFail [dBV/m]	23.02



PCS 1900 RF Interference Potential Test Report

Hardware Setup

Probe | Calibration Date EF3DV3 - SN4041 | March 04, 2025
DAE | Calibration Date DAE4ip Sn1621 | April 10, 2025
Software Version 1.2.6.2199

Communication Systems

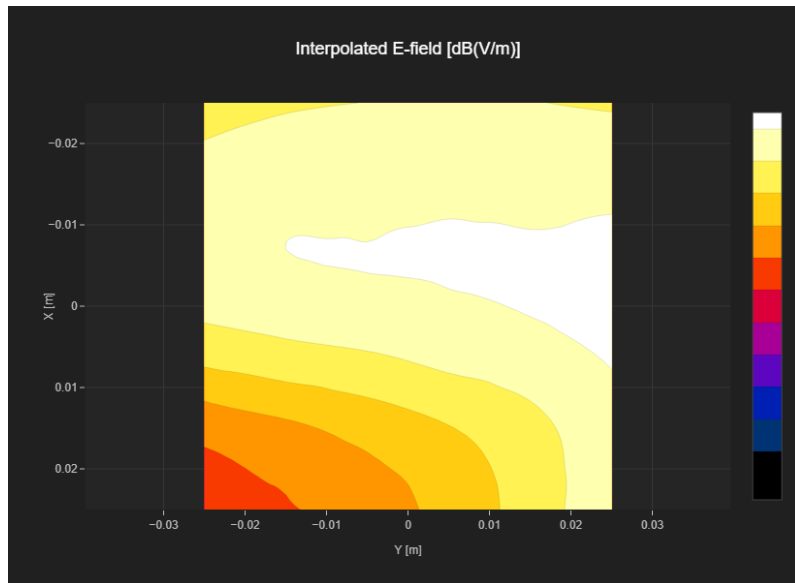
MIF 1.15
Channel | Frequency [MHz] 661 | 1880.0
Communication Systems' Name GPRS-FDD (TDMA, GMSK, TN 0-1)

Grid Settings

Extent X [mm]	50.0	Step X [mm]	10.0
Extent Y [mm]	50.0	Step Y [mm]	10.0
Distance [mm]	15.0		

Results

E _{max} [dBV/m]	23.28	E _{avg 50x50 Max} [dBV/m]	21.71
Drift [dB]	0.23	RFail [dBV/m]	22.86



PCS 1900 RF Interference Potential Test Report

Hardware Setup

Probe | Calibration Date EF3DV3 - SN4041 | March 04, 2025
DAE | Calibration Date DAE4ip Sn1621 | April 10, 2025
Software Version 1.2.6.2199

Communication Systems

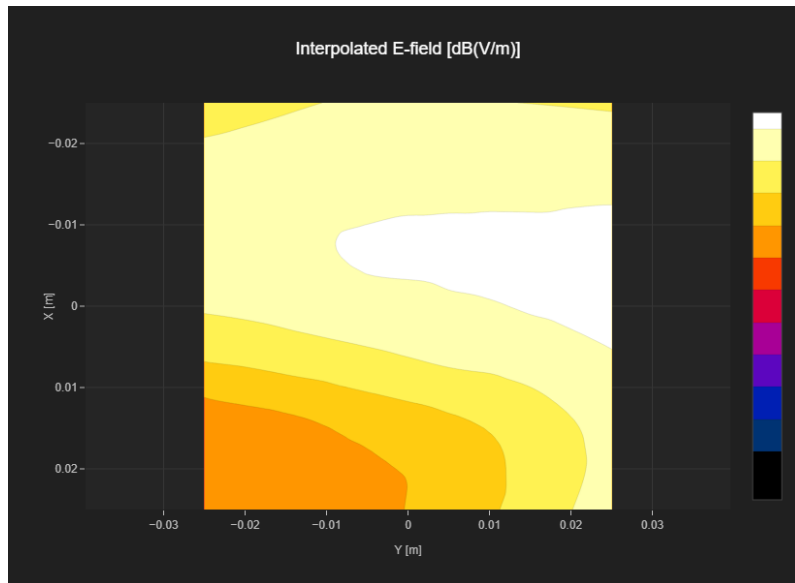
MIF 1.15
Channel | Frequency [MHz] 810 | 1909.8
Communication Systems' Name GPRS-FDD (TDMA, GMSK, TN 0-1)

Grid Settings

Extent X [mm]	50.0	Step X [mm]	10.0
Extent Y [mm]	50.0	Step Y [mm]	10.0
Distance [mm]	15.0		

Results

E _{max} [dBV/m]	23.5	E _{avg 50x50 Max} [dBV/m]	21.15
Drift [dB]	0.06	RFail [dBV/m]	22.3



PCS 1900 RF Interference Potential Test Report

Hardware Setup

Probe | Calibration Date EF3DV3 - SN4041 | March 04, 2025
DAE | Calibration Date DAE4ip Sn1621 | April 10, 2025
Software Version 1.2.6.2199

Communication Systems

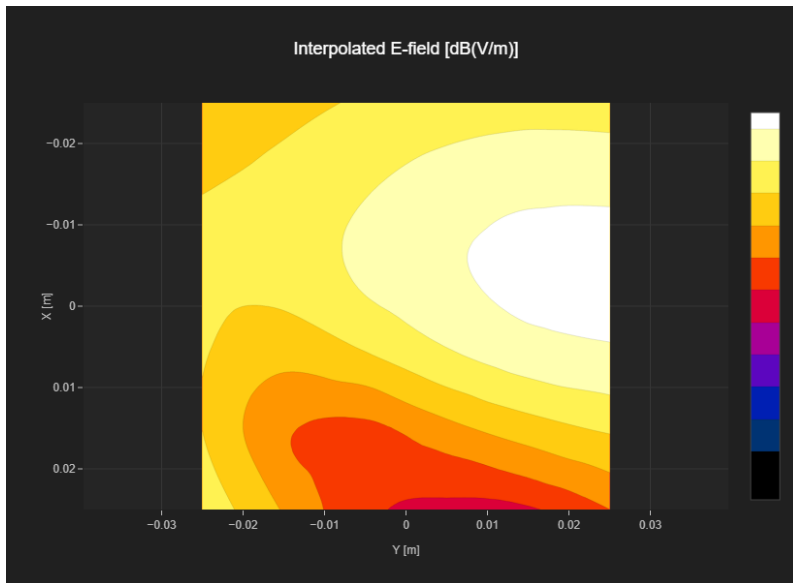
MIF 3.8
Channel | Frequency [MHz] 512 | 1850.2
Communication Systems' Name GPRS-FDD (TDMA, GMSK, TN 0)

Grid Settings

Extent X [mm]	50.0	Step X [mm]	10.0
Extent Y [mm]	50.0	Step Y [mm]	10.0
Distance [mm]	15.0		

Results

E _{max} [dBV/m]	26.31	E _{avg 50x50 Max} [dBV/m]	22.81
Drift [dB]	-0.01	RFail [dBV/m]	26.61



PCS 1900 RF Interference Potential Test Report

Hardware Setup

Probe | Calibration Date EF3DV3 - SN4041 | March 04, 2025
DAE | Calibration Date DAE4ip Sn1621 | April 10, 2025
Software Version 1.2.6.2199

Communication Systems

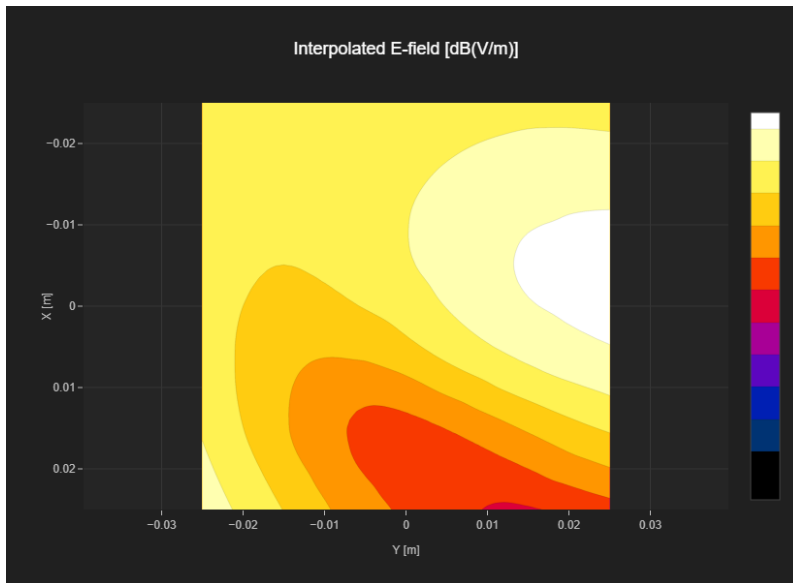
MIF 3.8
Channel | Frequency [MHz] 661 | 1880.0
Communication Systems' Name GPRS-FDD (TDMA, GMSK, TN 0)

Grid Settings

Extent X [mm]	50.0	Step X [mm]	10.0
Extent Y [mm]	50.0	Step Y [mm]	10.0
Distance [mm]	15.0		

Results

E _{max} [dBV/m]	26.73	E _{avg 50x50 Max} [dBV/m]	23.01
Drift [dB]	0.08	RFail [dBV/m]	26.81



PCS 1900 RF Interference Potential Test Report

Hardware Setup

Probe | Calibration Date EF3DV3 - SN4041 | March 04, 2025
DAE | Calibration Date DAE4ip Sn1621 | April 10, 2025
Software Version 1.2.6.2199

Communication Systems

MIF 3.8
Channel | Frequency [MHz] 810 | 1909.8
Communication Systems' Name GPRS-FDD (TDMA, GMSK, TN 0)

Grid Settings

Extent X [mm]	50.0	Step X [mm]	10.0
Extent Y [mm]	50.0	Step Y [mm]	10.0
Distance [mm]	15.0		

Results

E _{max} [dBV/m]	26.22	E _{avg 50x50 Max} [dBV/m]	22.68
Drift [dB]	0.16	RFail [dBV/m]	26.48

