

# Band 48: LTE-TDD (SC-FDMA, 100% RB, 20 MHz, QPSK, UL Subframe=2,3,4,7,8,9) AntennaCfg:SISO, CHEEK

## Exposure Conditions

Band	Band 48	TSL Permittivity	41.3
Frequency [MHz]   Channel Number	3646.700   56207	TSL Conductivity [S/m]	2.81
Group   UID	LTE-TDD   10512-AAG	Phantom Section   TSL	RightHead   HSL
Conversion Factor	6.46	Test Distance [mm]	0.00

## Hardware Setup

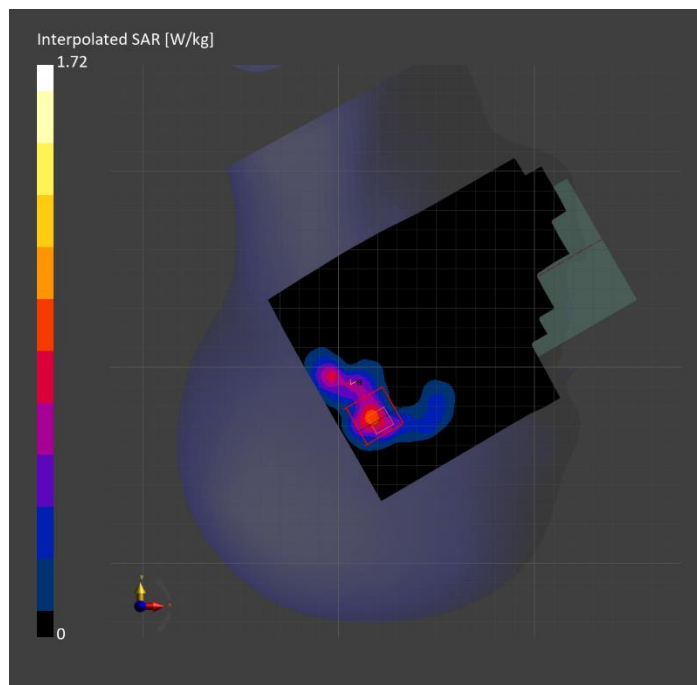
Probe   Calibration Date	EX3DV4 - SN3990 Sensor X Disabled   2025-02-07	Phantom	Twin-SAM V5.0 (30deg probe tilt)
DAE   Calibration Date	DAE4 Sn1545   2025-02-06	TSL Type	HBBL-600-10000
Software Version	16.4.0.5005		

## Scan Setup

	Area Scan	Zoom Scan
Grid Extents [mm]	120.0 x 180.0	34.4 x 34.4 x 29.1
Grid Steps [mm]	10.0 x 10.0	4.3 x 4.3 x 1.4
Sensor Surface [mm]	3.0	1.4
Graded Grid	N/A	Yes
M2/M1 [> 30%]		78.1
Dist 3dB Peak [> Grid Steps Δx, Δy mm]		6.9
Peak SAR [W/kg], SAR Peak Location [mm]	N/A	1.72, 21.0, -327.5, -169.6

## Measurement Results

	Area Scan	Zoom Scan
psSAR1g [W/Kg]	0.658	<b>0.701</b>
psSAR10g [W/Kg]	0.255	<b>0.282</b>
Power Drift [±0.2 dB]	N/A	0.06



**Band 66: LTE-FDD (SC-FDMA, 1 RB, 20 MHz, QPSK) RBPosition:Mid  
AntennaCfg:SISO, BACK**

**Exposure Conditions**

Band	Band 66	TSL Permittivity	38.8
Frequency [MHz]   Channel Number	1745.000   132322	TSL Conductivity [S/m]	1.31
Group   UID	LTE-FDD   10169-CAF	Phantom Section   TSL	Flat   HSL
Conversion Factor	8.15	Test Distance [mm]	5.00

**Hardware Setup**

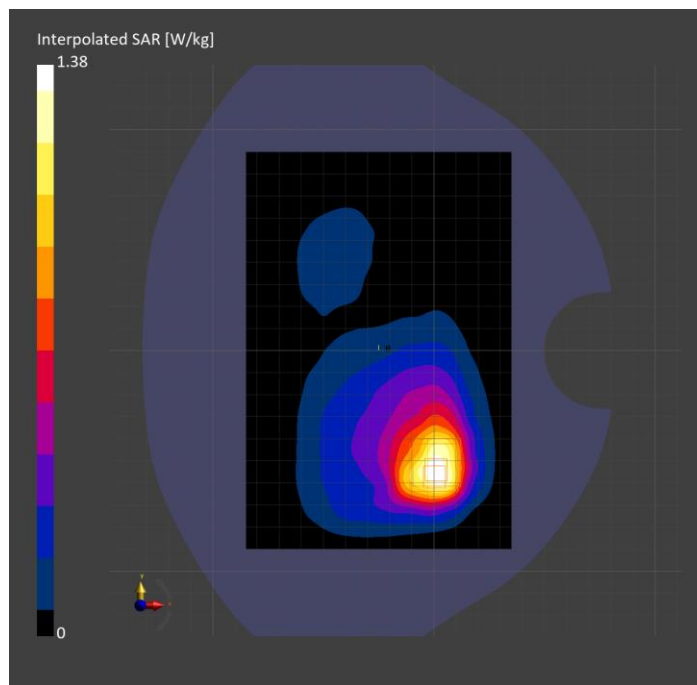
Probe   Calibration Date	EX3DV4 - SN7335   2025-01-13	Phantom	Twin-SAM V8.0 (30deg probe tilt)
DAE   Calibration Date	DAE4ip Sn1892   2025-03-04	TSL Type	HBBL-600-10000
Software Version	16.4.0.5005		

**Scan Setup**

	Area Scan	Zoom Scan
Grid Extents [mm]	120.0 x 180.0	30.0 x 36.0 x 31.2
Grid Steps [mm]	15.0 x 15.0	6.0 x 6.0 x 1.5
Sensor Surface [mm]	3.0	1.4
Graded Grid	N/A	Yes
M2/M1 [> 30%]		77.9
Dist 3dB Peak [> Grid Steps Δx, Δy mm]		10.2
Peak SAR [W/kg], SAR Peak Location [mm]	N/A	1.38, 0.2, -57.3, -202.0

**Measurement Results**

	Area Scan	Zoom Scan
psSAR1g [W/Kg]	0.715	<b>0.675</b>
psSAR10g [W/Kg]	0.404	<b>0.385</b>
Power Drift [±0.2 dB]	0.04	0.03



# Band 41: LTE-TDD (SC-FDMA, 100% RB, 20 MHz, QPSK, UL Subframe=2,3,4,7,8,9) AntennaCfg:SISO, EDGE LEFT

## Exposure Conditions

Band	Band 41	TSL Permittivity	42.1
Frequency [MHz]   Channel Number	2593.000   40620	TSL Conductivity [S/m]	1.90
Group   UID	LTE-TDD   10512-AAG	Phantom Section   TSL	Flat   HSL
Conversion Factor	6.17	Test Distance [mm]	5.00

## Hardware Setup

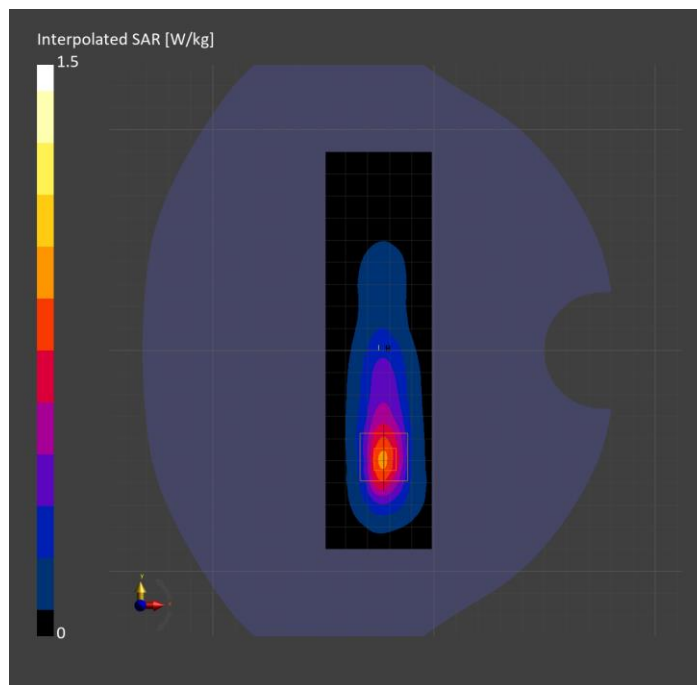
Probe   Calibration Date	EX3DV4 - SN3686   2025-01-13	Phantom	Twin-SAM V5.0 (30deg probe tilt)
DAE   Calibration Date	DAE4 Sn1357   2025-01-13	TSL Type	HBBL-600-10000
Software Version	16.4.0.5005		

## Scan Setup

	Area Scan	Zoom Scan
Grid Extents [mm]	48.0 x 180.0	30.0 x 30.0 x 31.2
Grid Steps [mm]	8.0 x 10.0	5.0 x 5.0 x 1.5
Sensor Surface [mm]	3.0	1.4
Graded Grid	N/A	Yes
M2/M1 [> 30%]		82.9
Dist 3dB Peak [> Grid Steps Δx, Δy mm]		8.0
Peak SAR [W/kg], SAR Peak Location [mm]	N/A	1.51, -22.1, -49.3, -202.0

## Measurement Results

	Area Scan	Zoom Scan
psSAR1g [W/Kg]	0.684	<b>0.741</b>
psSAR10g [W/Kg]	0.313	<b>0.348</b>
Power Drift [±0.2 dB]	N/A	0.09



# Custom Band: CW, FRONT

## Exposure Conditions

Band	Custom Band	TSL Permittivity	40.1
Frequency [MHz]   Channel Number	1610.17   1610200	TSL Conductivity [S/m]	1.19
Group   UID	CW   0--	Phantom Section   TSL	Flat   HSL
Conversion Factor	8.8	Test Distance [mm]	0.00

## Hardware Setup

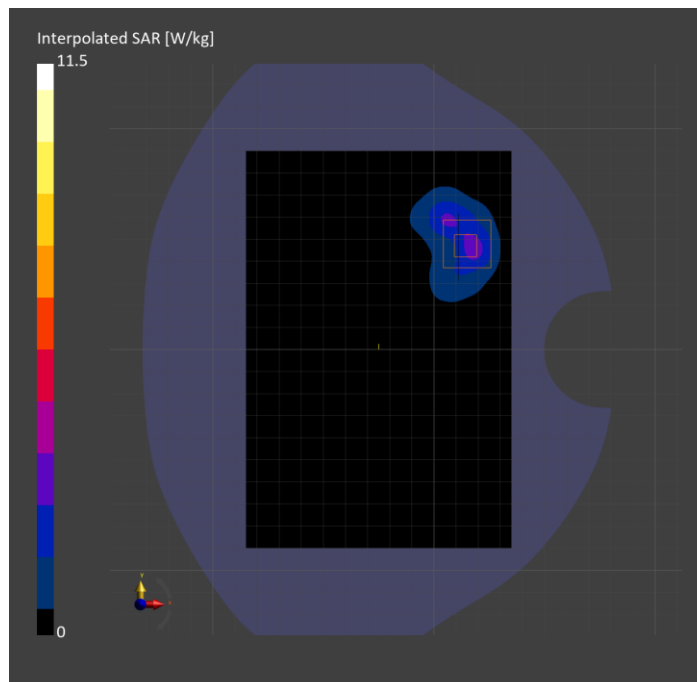
Probe   Calibration Date	EX3DV4 - SN7356   2025-03-10	Phantom	Twin-SAM V8.0 (30deg probe tilt)
DAE   Calibration Date	DAE4 Sn1239   2025-03-10	TSL Type	HBBL-600-10000
Software Version	16.4.0.5005		

## Scan Setup

	Area Scan	Zoom Scan
Grid Extents [mm]	120.0 x 180.0	30.6 x 30.6 x 33.4
Grid Steps [mm]	15.0 x 15.0	3.4 x 3.4 x 1.4
Sensor Surface [mm]	3.0	1.4
Graded Grid	N/A	Yes
M2/M1 [> 30%]		66.9
Dist 3dB Peak [> Grid Steps Δx, Δy mm]		4.1
Peak SAR [W/kg], SAR Peak Location [mm]	N/A	11.5, 15.0, 47.8, -196.2

## Measurement Results

	Area Scan	Zoom Scan
psSAR1g [W/Kg]	2.50	<b>3.97</b>
psSAR10g [W/Kg]	1.39	<b>1.70</b>
Power Drift [±0.2 dB]	N/A	0.02



# Custom Band: IEEE 802.15.1 Bluetooth (GFSK, DH5), BACK

## Exposure Conditions

Band	Custom Band	TSL Permittivity	35.1
Frequency [MHz]   Channel Number	5788.000   5788000	TSL Conductivity [S/m]	4.95
Group   UID	CW   10032-CAA	Phantom Section   TSL	Flat   HSL
Conversion Factor	5.52	Test Distance [mm]	5.00

## Hardware Setup

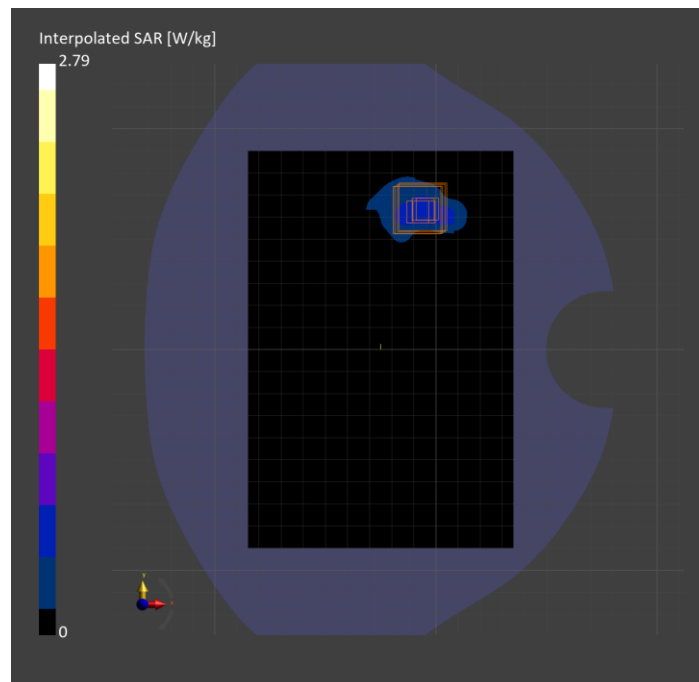
Probe   Calibration Date	EX3DV4 - SN7914   2025-03-17	Phantom	Twin-SAM V8.0 (30deg probe tilt)
DAE   Calibration Date	DAE4ip Sn1893   2025-03-18	TSL Type	HBBL-600-10000
Software Version	16.4.0.5005		

## Scan Setup

	Area Scan	Zoom Scan
Grid Extents [mm]	120.0 x 180.0	32.0 x 32.0 x 22.9
Grid Steps [mm]	10.0 x 10.0	4.0 x 4.0 x 1.4
Sensor Surface [mm]	3.0	1.4
Graded Grid	N/A	Yes
M2/M1 [> 30%]		57.0
Dist 3dB Peak [> Grid Steps Δx, Δy mm]		6.4
Peak SAR [W/kg], SAR Peak Location [mm]	N/A	2.60, -3.9, 63.6, -202.0

## Measurement Results

	Area Scan	Zoom Scan
psSAR1g [W/Kg]	0.480	<b>0.583</b>
psSAR10g [W/Kg]	0.175	<b>0.195</b>
Power Drift [±0.2 dB]	N/A	-0.13



# Band 48: LTE-TDD (SC-FDMA, 100% RB, 20 MHz, QPSK, UL Subframe=2,3,4,7,8,9) AntennaCfg:SISO, CHEEK

## Exposure Conditions

Band	Band 48	TSL Permittivity	41.3
Frequency [MHz]   Channel Number	3646.700   56207	TSL Conductivity [S/m]	2.81
Group   UID	LTE-TDD   10512-AAG	Phantom Section   TSL	RightHead   HSL
Conversion Factor	6.46	Test Distance [mm]	0.00

## Hardware Setup

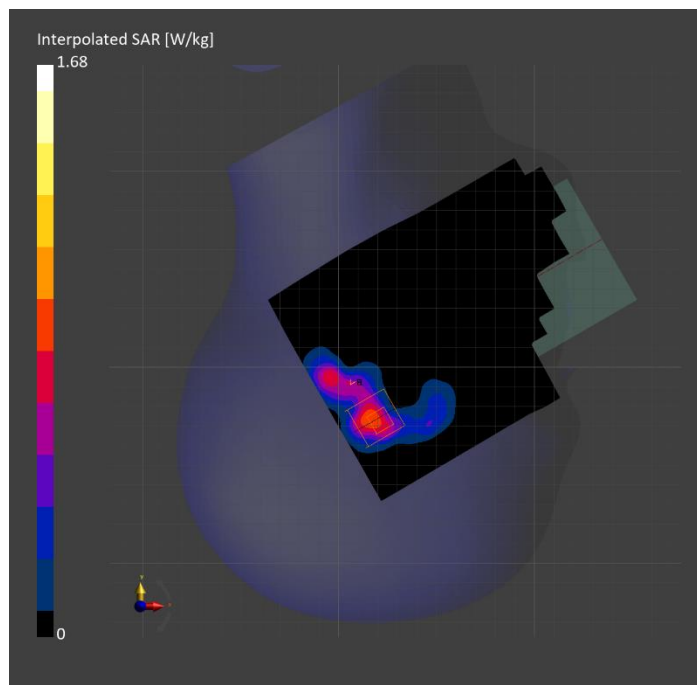
Probe   Calibration Date	EX3DV4 - SN3990 Sensor X Disabled   2025-02-07	Phantom	Twin-SAM V5.0 (30deg probe tilt)
DAE   Calibration Date	DAE4 Sn1545   2025-02-06	TSL Type	HBBL-600-10000
Software Version	16.4.0.5005		

## Scan Setup

	Area Scan	Zoom Scan
Grid Extents [mm]	120.0 x 180.0	36.8 x 36.8 x 29.1
Grid Steps [mm]	10.0 x 10.0	4.6 x 4.6 x 1.4
Sensor Surface [mm]	3.0	1.4
Graded Grid	N/A	Yes
M2/M1 [> 30%]		78.4
Dist 3dB Peak [> Grid Steps Δx, Δy mm]		6.2
Peak SAR [W/kg], SAR Peak Location [mm]	N/A	1.68, 21.0, -327.5, -169.6

## Measurement Results

	Area Scan	Zoom Scan
psSAR1g [W/Kg]	0.685	<b>0.699</b>
psSAR10g [W/Kg]	0.269	<b>0.280</b>
Power Drift [±0.2 dB]	N/A	0.00



# Band 66: LTE-FDD (SC-FDMA, 1 RB, 20 MHz, QPSK) RBPosition:Mid AntennaCfg:SISO, BACK

## Exposure Conditions

Band	Band 66	TSL Permittivity	38.8
Frequency [MHz]   Channel Number	1745.000   132322	TSL Conductivity [S/m]	1.31
Group   UID	LTE-FDD   10169-CAF	Phantom Section   TSL	Flat   HSL
Conversion Factor	8.15	Test Distance [mm]	5.00

## Hardware Setup

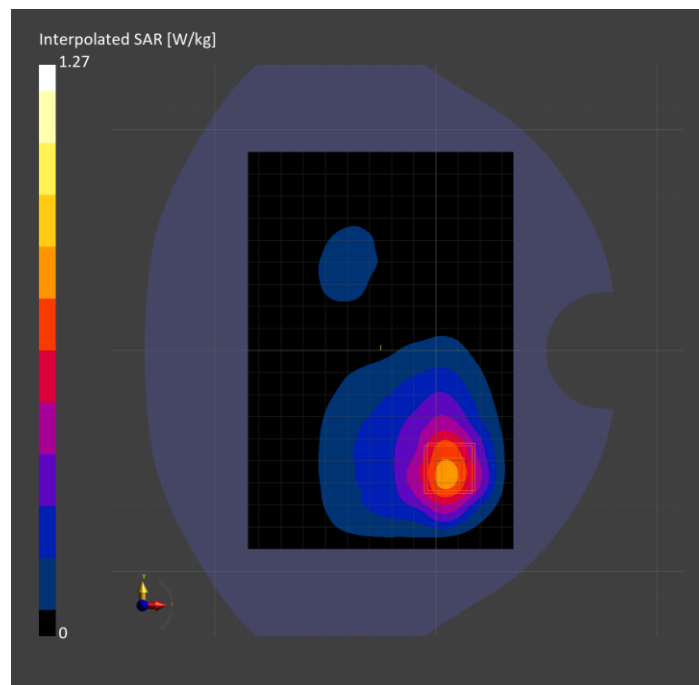
Probe   Calibration Date	EX3DV4 - SN7335   2025-01-13	Phantom	Twin-SAM V8.0 (30deg probe tilt)
DAE   Calibration Date	DAE4ip Sn1892   2025-03-04	TSL Type	HBBL-600-10000
Software Version	16.4.0.5005		

## Scan Setup

	Area Scan	Zoom Scan
Grid Extents [mm]	120.0 x 180.0	54.0 x 54.0 x 31.2
Grid Steps [mm]	15.0 x 15.0	6.0 x 6.0 x 1.5
Sensor Surface [mm]	3.0	1.4
Graded Grid	N/A	Yes
M2/M1 [> 30%]		81.5
Dist 3dB Peak [> Grid Steps Δx, Δy mm]		10.8
Peak SAR [W/kg], SAR Peak Location [mm]	N/A	1.27, 7.6, -53.6, -202.0

## Measurement Results

	Area Scan	Zoom Scan
psSAR1g [W/Kg]	0.673	<b>0.669</b>
psSAR10g [W/Kg]	0.387	<b>0.391</b>
Power Drift [±0.2 dB]	-0.04	-0.03



# Band 41: LTE-TDD (SC-FDMA, 100% RB, 20 MHz, QPSK, UL Subframe=2,3,4,7,8,9) AntennaCfg:SISO, EDGE LEFT

## Exposure Conditions

Band	Band 41	TSL Permittivity	42.1
Frequency [MHz]   Channel Number	2593.000   40620	TSL Conductivity [S/m]	1.90
Group   UID	LTE-TDD   10512-AAG	Phantom Section   TSL	Flat   HSL
Conversion Factor	6.17	Test Distance [mm]	5.00

## Hardware Setup

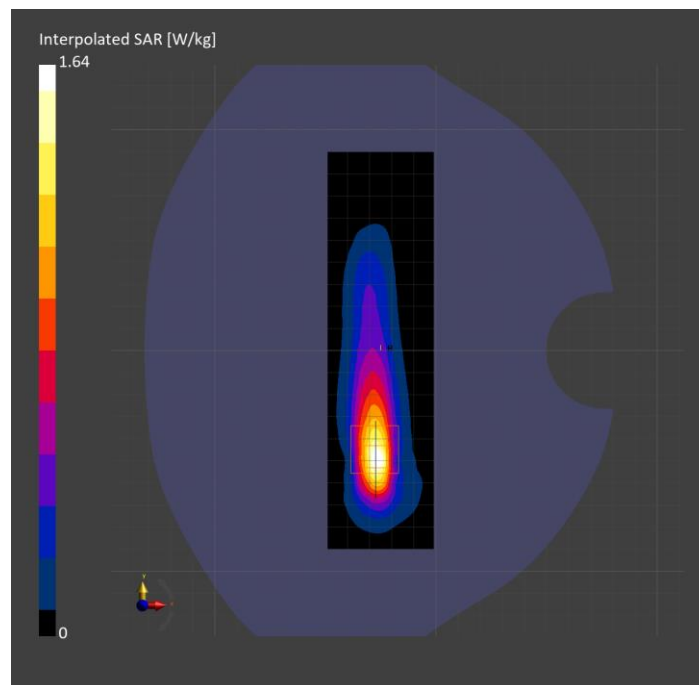
Probe   Calibration Date	EX3DV4 - SN3686   2025-01-13	Phantom	Twin-SAM V5.0 (30deg probe tilt)
DAE   Calibration Date	DAE4 Sn1357   2025-01-13	TSL Type	HBBL-600-10000
Software Version	16.4.0.5005		

## Scan Setup

	Area Scan	Zoom Scan
Grid Extents [mm]	48.0 x 180.0	30.0 x 35.0 x 31.2
Grid Steps [mm]	8.0 x 10.0	5.0 x 5.0 x 1.5
Sensor Surface [mm]	3.0	1.4
Graded Grid	N/A	Yes
M2/M1 [> 30%]		81.4
Dist 3dB Peak [> Grid Steps Δx, Δy mm]		6.4
Peak SAR [W/kg], SAR Peak Location [mm]	N/A	1.64, -27.3, -48.1, -202.0

## Measurement Results

	Area Scan	Zoom Scan
psSAR1g [W/Kg]	0.755	<b>0.772</b>
psSAR10g [W/Kg]	0.319	<b>0.332</b>
Power Drift [±0.2 dB]	N/A	-0.02





# Custom Band: CW, FRONT

## Exposure Conditions

Band	Custom Band	TSL Permittivity	40.1
Frequency [MHz]   Channel Number	1610.200   1610200	TSL Conductivity [S/m]	1.19
Group   UID	CW   0--	Phantom Section   TSL	Flat   HSL
Conversion Factor	8.8	Test Distance [mm]	0.00

## Hardware Setup

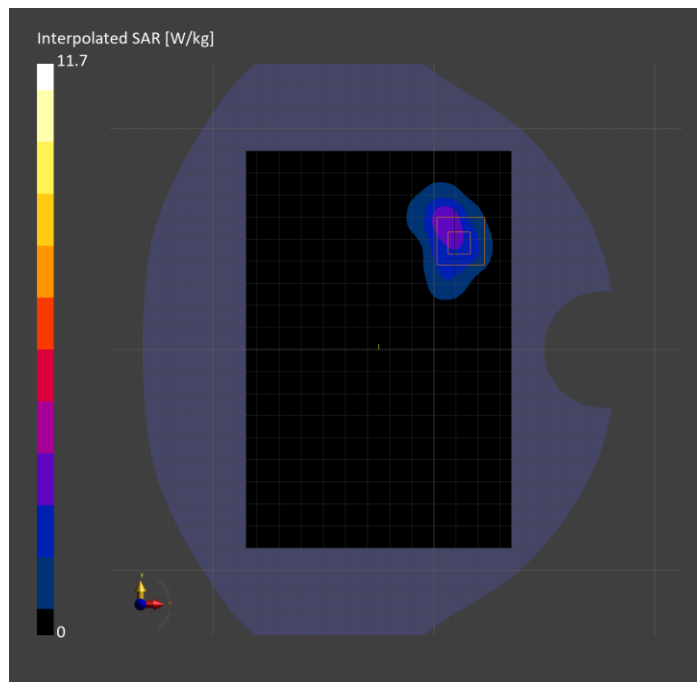
Probe   Calibration Date	EX3DV4 - SN7356   2025-03-10	Phantom	Twin-SAM V8.0 (30deg probe tilt)
DAE   Calibration Date	DAE4 Sn1239   2025-03-10	TSL Type	HBBL-600-10000
Software Version	16.4.0.5005		

## Scan Setup

	Area Scan	Zoom Scan
Grid Extents [mm]	120.0 x 180.0	34.2 x 34.2 x 33.4
Grid Steps [mm]	15.0 x 15.0	3.8 x 3.8 x 1.4
Sensor Surface [mm]	3.0	1.4
Graded Grid	N/A	Yes
M2/M1 [> 30%]		74.1
Dist 3dB Peak [> Grid Steps Δx, Δy mm]		5.4
Peak SAR [W/kg], SAR Peak Location [mm]	N/A	11.2, 13.1, 47.1, -202.0

## Measurement Results

	Area Scan	Zoom Scan
psSAR1g [W/Kg]	2.51	4.15
psSAR10g [W/Kg]	1.47	1.77
Power Drift [±0.2 dB]	N/A	-0.02



# Custom Band: IEEE 802.15.1 Bluetooth (GFSK, DH5), BACK

## Exposure Conditions

Band	Custom Band	TSL Permittivity	33.5
Frequency [MHz]   Channel Number	5788.000   Mid	TSL Conductivity [S/m]	4.99
Group   UID	CW   10032-CAA	Phantom Section   TSL	Flat   HSL
Conversion Factor	5.54	Test Distance [mm]	5.00

## Hardware Setup

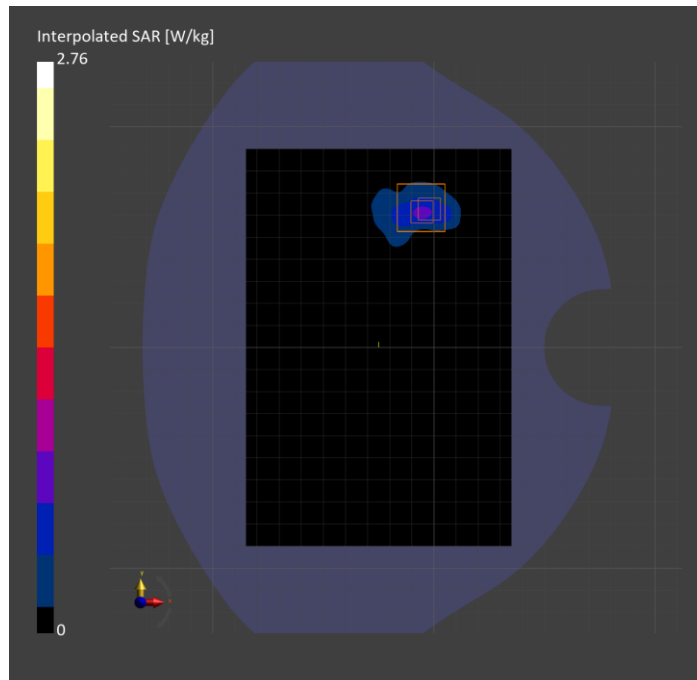
Probe   Calibration Date	EX3DV4 - SN7914   2025-03-17	Phantom	Twin-SAM V8.0 (30deg probe tilt)
DAE   Calibration Date	DAE4ip Sn1893   2025-03-18	TSL Type	HBBL-600-10000
Software Version	16.4.0.5005		

## Scan Setup

	Area Scan	Zoom Scan
Grid Extents [mm]	120.0 x 180.0	32.0 x 32.0 x 22.9
Grid Steps [mm]	10.0 x 10.0	4.0 x 4.0 x 1.4
Sensor Surface [mm]	3.0	1.4
Graded Grid	N/A	Yes
M2/M1 [> 30%]		57.7
Dist 3dB Peak [> Grid Steps Δx, Δy mm]		5.1
Peak SAR [W/kg], SAR Peak Location [mm]	N/A	2.76, -2.1, 62.7, -202.0

## Measurement Results

	Area Scan	Zoom Scan
psSAR1g [W/Kg]	0.525	<b>0.600</b>
psSAR10g [W/Kg]	0.179	<b>0.187</b>
Power Drift [±0.2 dB]	N/A	0.00



# Band 48: LTE-TDD (SC-FDMA, 100% RB, 20 MHz, QPSK, UL Subframe=2,3,4,7,8,9) AntennaCfg:SISO, CHEEK

## Exposure Conditions

Band	Band 48	TSL Permittivity	41.3
Frequency [MHz]   Channel Number	3646.700   56207	TSL Conductivity [S/m]	2.81
Group   UID	LTE-TDD   10512-AAG	Phantom Section   TSL	RightHead   HSL
Conversion Factor	6.46	Test Distance [mm]	0.00

## Hardware Setup

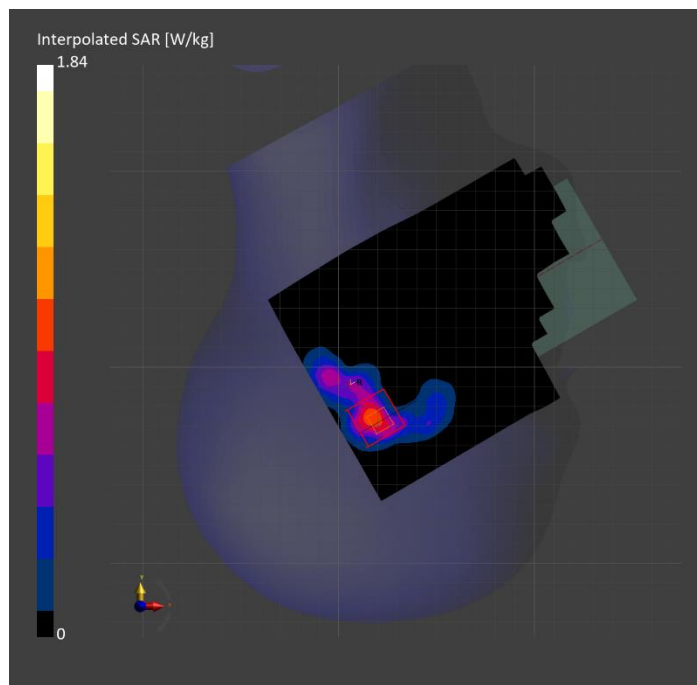
Probe   Calibration Date	EX3DV4 - SN3990 Sensor X Disabled   2025-02-07	Phantom	Twin-SAM V5.0 (30deg probe tilt)
DAE   Calibration Date	DAE4 Sn1545   2025-02-06	TSL Type	HBBL-600-10000
Software Version	16.4.0.5005		

## Scan Setup

	Area Scan	Zoom Scan
Grid Extents [mm]	120.0 x 180.0	34.4 x 34.4 x 29.1
Grid Steps [mm]	10.0 x 10.0	4.3 x 4.3 x 1.4
Sensor Surface [mm]	3.0	1.4
Graded Grid	N/A	Yes
M2/M1 [> 30%]		79.0
Dist 3dB Peak [> Grid Steps Δx, Δy mm]		6.6
Peak SAR [W/kg], SAR Peak Location [mm]	N/A	1.84, 21.0, -327.5, -169.6

## Measurement Results

	Area Scan	Zoom Scan
psSAR1g [W/Kg]	0.750	<b>0.760</b>
psSAR10g [W/Kg]	0.290	<b>0.299</b>
Power Drift [±0.2 dB]	N/A	-0.02



# Band 66: LTE-FDD (SC-FDMA, 1 RB, 20 MHz, QPSK) RBPosition:Mid AntennaCfg:SISO, BACK

## Exposure Conditions

Band	Band 66	TSL Permittivity	38.8
Frequency [MHz]   Channel Number	1745.000   132322	TSL Conductivity [S/m]	1.31
Group   UID	LTE-FDD   10169-CAF	Phantom Section   TSL	Flat   HSL
Conversion Factor	8.15	Test Distance [mm]	5.00

## Hardware Setup

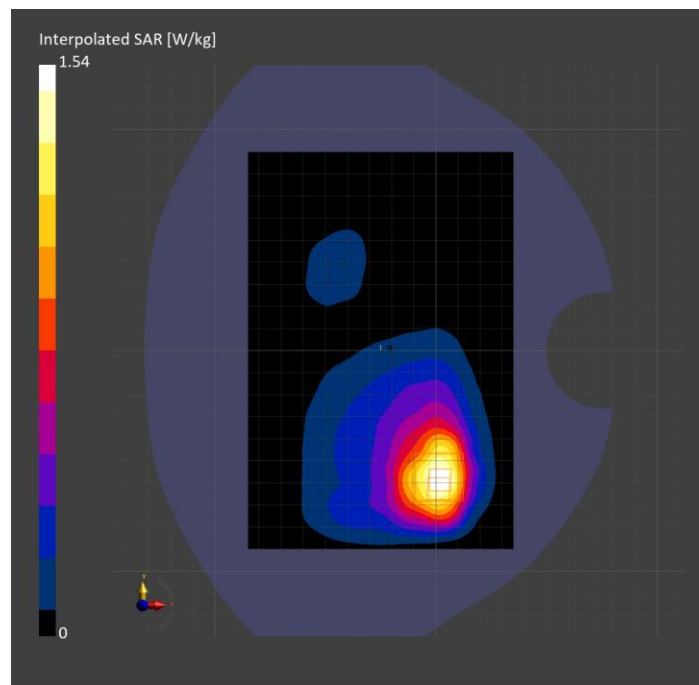
Probe   Calibration Date	EX3DV4 - SN7335   2025-01-13	Phantom	Twin-SAM V8.0 (30deg probe tilt)
DAE   Calibration Date	DAE4ip Sn1892   2025-03-04	TSL Type	HBBL-600-10000
Software Version	16.4.0.5005		

## Scan Setup

	Area Scan	Zoom Scan
Grid Extents [mm]	120.0 x 180.0	30.0 x 42.0 x 31.2
Grid Steps [mm]	15.0 x 15.0	6.0 x 6.0 x 1.5
Sensor Surface [mm]	3.0	1.4
Graded Grid	N/A	Yes
M2/M1 [> 30%]		80.9
Dist 3dB Peak [> Grid Steps Δx, Δy mm]		9.2
Peak SAR [W/kg], SAR Peak Location [mm]	N/A	1.54, 1.1, -62.6, -202.0

## Measurement Results

	Area Scan	Zoom Scan
psSAR1g [W/Kg]	0.763	<b>0.753</b>
psSAR10g [W/Kg]	0.430	<b>0.430</b>
Power Drift [±0.2 dB]	-0.04	0.05



# Custom Band: IEEE 802.15.1 Bluetooth (GFSK, DH5), BACK

## Exposure Conditions

Band	Custom Band	TSL Permittivity	33.5
Frequency [MHz]   Channel Number	5788.000   Mid	TSL Conductivity [S/m]	4.99
Group   UID	CW   10032-CAA	Phantom Section   TSL	Flat   HSL
Conversion Factor	5.54	Test Distance [mm]	5.00

## Hardware Setup

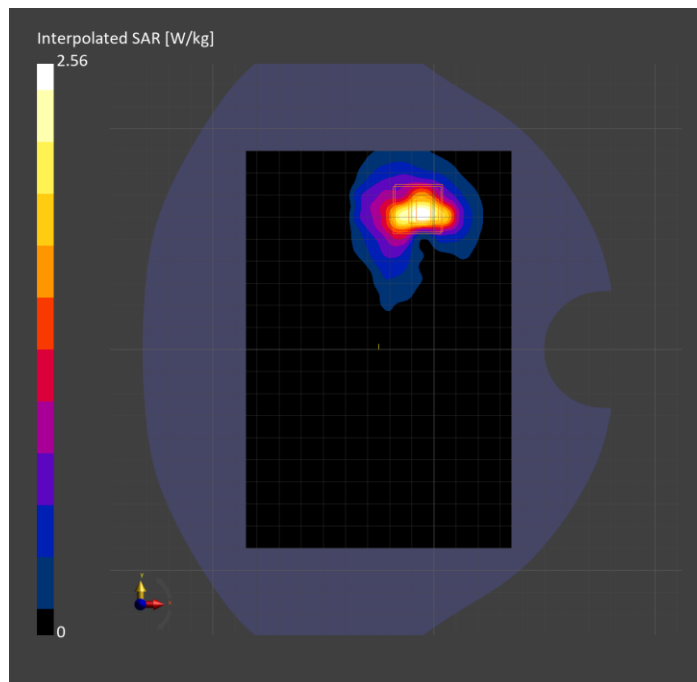
Probe   Calibration Date	EX3DV4 - SN7914   2025-03-17	Phantom	Twin-SAM V8.0 (30deg probe tilt)
DAE   Calibration Date	DAE4ip Sn1893   2025-03-18	TSL Type	HBBL-600-10000
Software Version	16.4.0.5005		

## Scan Setup

	Area Scan	Zoom Scan
Grid Extents [mm]	120.0 x 180.0	28.0 x 24.0 x 22.9
Grid Steps [mm]	10.0 x 10.0	4.0 x 4.0 x 1.4
Sensor Surface [mm]	3.0	1.4
Graded Grid	N/A	Yes
M2/M1 [> 30%]		57.4
Dist 3dB Peak [> Grid Steps Δx, Δy mm]		5.4
Peak SAR [W/kg], SAR Peak Location [mm]	N/A	2.56, -3.0, 63.2, -202.0

## Measurement Results

	Area Scan	Zoom Scan
psSAR1g [W/Kg]	0.469	<b>0.555</b>
psSAR10g [W/Kg]	0.163	<b>0.173</b>
Power Drift [±0.2 dB]	N/A	0.02



# U-NII-8: IEEE 802.11ax (160MHz, MCS0, 99pc duty cycle), BACK

## Exposure Conditions

Band	U-NII-8	Phantom Section	5G
Frequency [MHz]   Channel Number	6985.0   207	Conversion Factor	1.0
Group   UID	WLAN, 10755-AAC	Position   Test Distance [mm]	BACK   2.00

## Hardware Setup

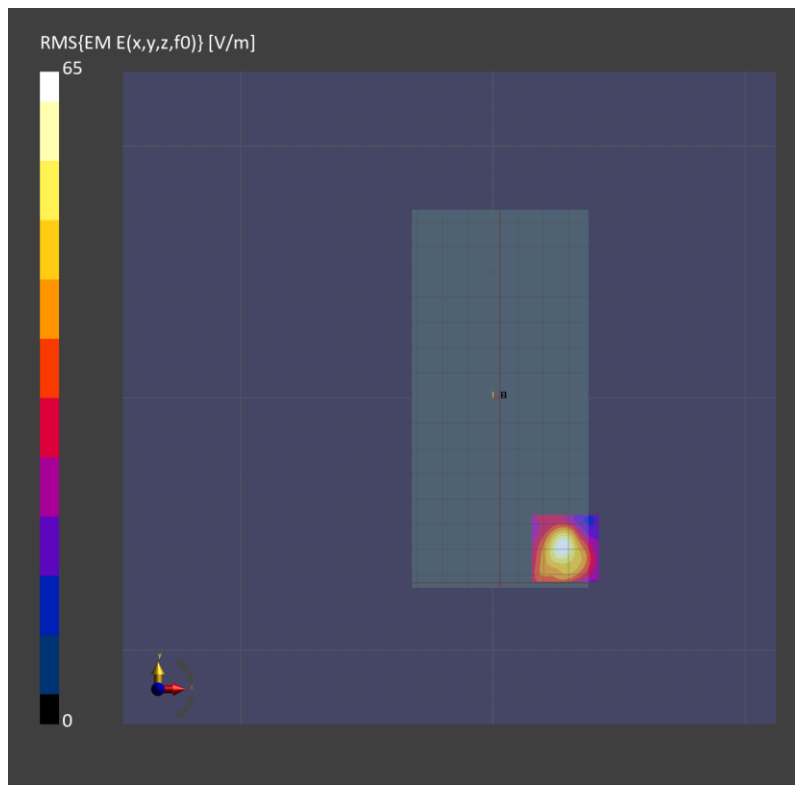
Probe   Calibration Date	EUmmWV4 - SN9493_F1-55GHz   2025-01-13	Phantom	mmWave   xxxx
DAE   Calibration Date	DAE4 Sn1716   2025-03-11	Medium	Air   -
Software Version	3.2.0.1840		

## Scan Setup

Scan Type	5G Scan	Grid Extents [mm]	25.0 x 25.0
Grid Steps [lambda]	0.0412 x 0.0412	Sensor Surface [mm]	2.0

## Measurement Results

Avg. Area [cm <sup>2</sup> ]	4.00
psPDn+ [W/m <sup>2</sup> ]	3.32
psPDtot+ [W/m <sup>2</sup> ]	3.77
psPDmod+ [W/m <sup>2</sup> ]	4.89
E <sub>max</sub> [V/m]	65.0
Power Drift [dB]	0.04



# U-NII-5: IEEE 802.11ax (160MHz, MCS0, 99pc duty cycle), BACK

## Exposure Conditions

Band	U-NII-5	Phantom Section	5G
Frequency [MHz]   Channel Number	6345.0   79	Conversion Factor	1.0
Group   UID	WLAN, 10755-AAC	Position   Test Distance [mm]	BACK   2.00

## Hardware Setup

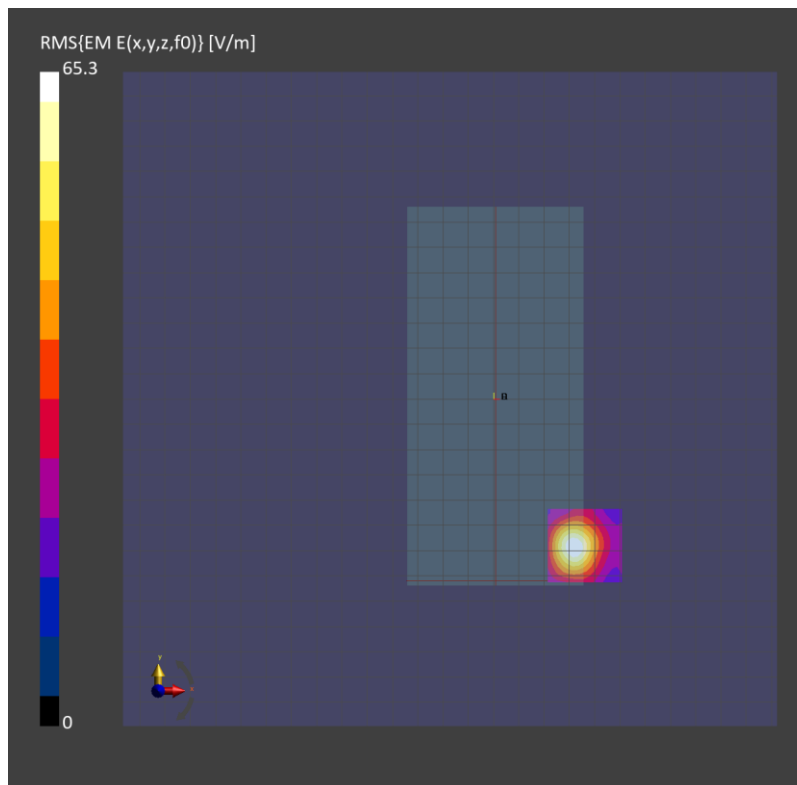
Probe   Calibration Date	EUmmWV4 - SN9619_F1-55GHz   2025-03-05	Phantom	mmWave   xxxx
DAE   Calibration Date	DAE4 Sn1540   2025-01-08	Medium	Air   -
Software Version	3.2.0.1840		

## Scan Setup

Scan Type	5G Scan	Grid Extents [mm]	25.0 x 25.0
Grid Steps [lambda]	0.0412 x 0.0412	Sensor Surface [mm]	2.0

## Measurement Results

Avg. Area [cm <sup>2</sup> ]	4.00
psPDn+ [W/m <sup>2</sup> ]	3.10
psPDtot+ [W/m <sup>2</sup> ]	3.64
psPDmod+ [W/m <sup>2</sup> ]	4.45
E <sub>max</sub> [V/m]	65.3
Power Drift [dB]	-0.02



# U-NII-5: IEEE 802.11ax (160MHz, MCS0, 99pc duty cycle), BACK

## Exposure Conditions

Band	U-NII-5	Phantom Section	5G
Frequency [MHz]   Channel Number	6345.0   79	Conversion Factor	1.0
Group   UID	WLAN, 10755-AAC	Position   Test Distance [mm]	BACK   2.00

## Hardware Setup

Probe   Calibration Date	EUmmWV4 - SN9619_F1-55GHz   2025-03-05	Phantom	mmWave   xxxx
DAE   Calibration Date	DAE4 Sn1540   2025-01-08	Medium	Air   -
Software Version	3.2.0.1840		

## Scan Setup

Scan Type	5G Scan	Grid Extents [mm]	25.0 x 25.0
Grid Steps [lambda]	0.0412 x 0.0412	Sensor Surface [mm]	2.0

## Measurement Results

Avg. Area [cm <sup>2</sup> ]	4.00
psPDn+ [W/m <sup>2</sup> ]	2.02
psPDtot+ [W/m <sup>2</sup> ]	3.06
psPDmod+ [W/m <sup>2</sup> ]	5.55
E <sub>max</sub> [V/m]	83.4
Power Drift [dB]	-0.10

