

PCS 1900 RF Interference Potential Test Report

Hardware Setup

Probe | Calibration Date EF3DV3 - SN4028 | September 04, 2023
 DAE | Calibration Date DAE4 Sn1546 | March 11, 2024
 Software Version 1.2.0.1713

Communication Systems

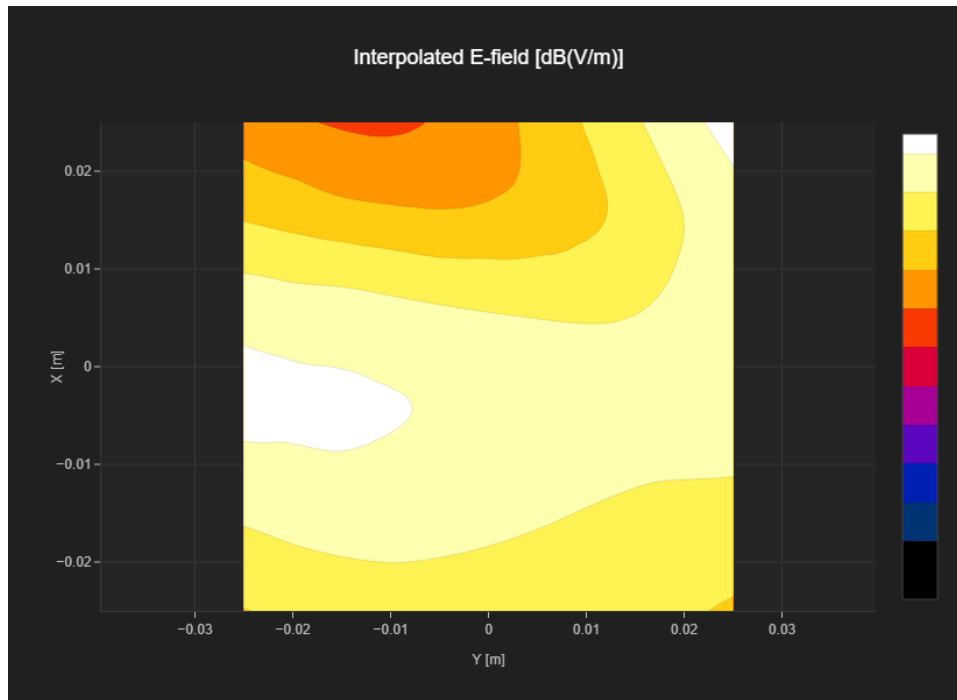
MIF 3.8
 Channel | Frequency [MHz] 512 | 1850.2
 Communication Systems' Name GPRS-FDD (TDMA, GMSK, TN 0)

Grid Settings

Extent X [mm]	50.0	Step X [mm]	10.0
Extent Y [mm]	50.0	Step Y [mm]	10.0
Distance [mm]	15.0		

Results

E _{max} [dBV/m]	23.43	E _{avg 50x50 Max} [dBV/m]	20.51
Drift [dB]	0.03	RFail [dBV/m]	24.31



PCS 1900 RF Interference Potential Test Report

Hardware Setup

Probe | Calibration Date EF3DV3 - SN4028 | September 04, 2023
 DAE | Calibration Date DAE4 Sn1546 | March 11, 2024
 Software Version 1.2.0.1713

Communication Systems

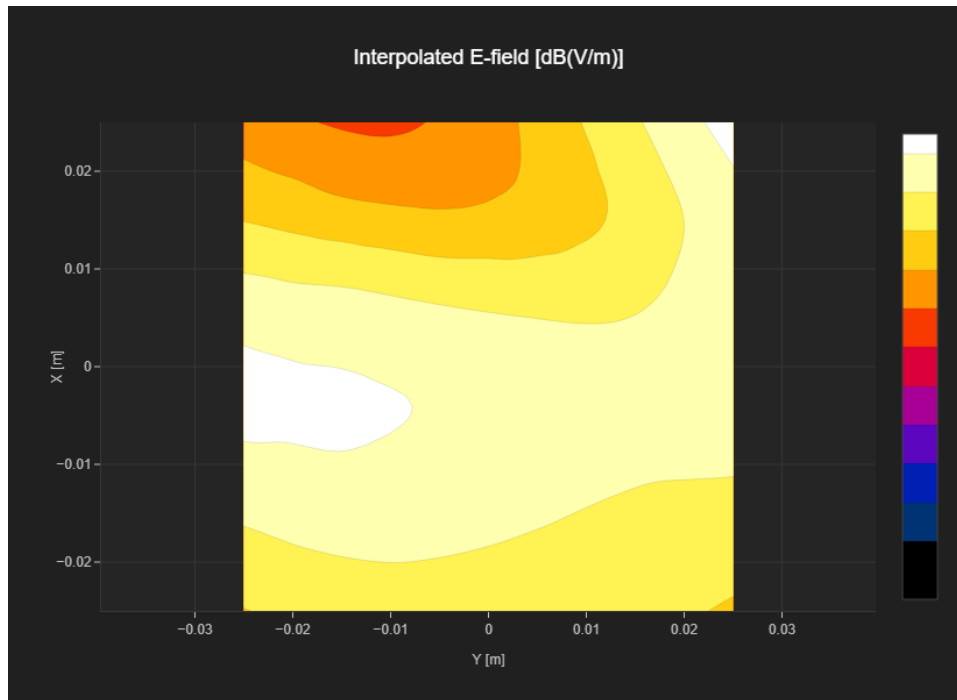
MIF 3.8
 Channel | Frequency [MHz] 661 | 1880.0
 Communication Systems' Name GPRS-FDD (TDMA, GMSK, TN 0)

Grid Settings

Extent X [mm]	50.0	Step X [mm]	10.0
Extent Y [mm]	50.0	Step Y [mm]	10.0
Distance [mm]	15.0		

Results

E _{max} [dBV/m]	22.95	E _{avg 50x50 Max} [dBV/m]	20.73
Drift [dB]	-0.08	RFail [dBV/m]	24.53



PCS 1900 RF Interference Potential Test Report

Hardware Setup

Probe | Calibration Date EF3DV3 - SN4028 | September 04, 2023
 DAE | Calibration Date DAE4 Sn1546 | March 11, 2024
 Software Version 1.2.0.1713

Communication Systems

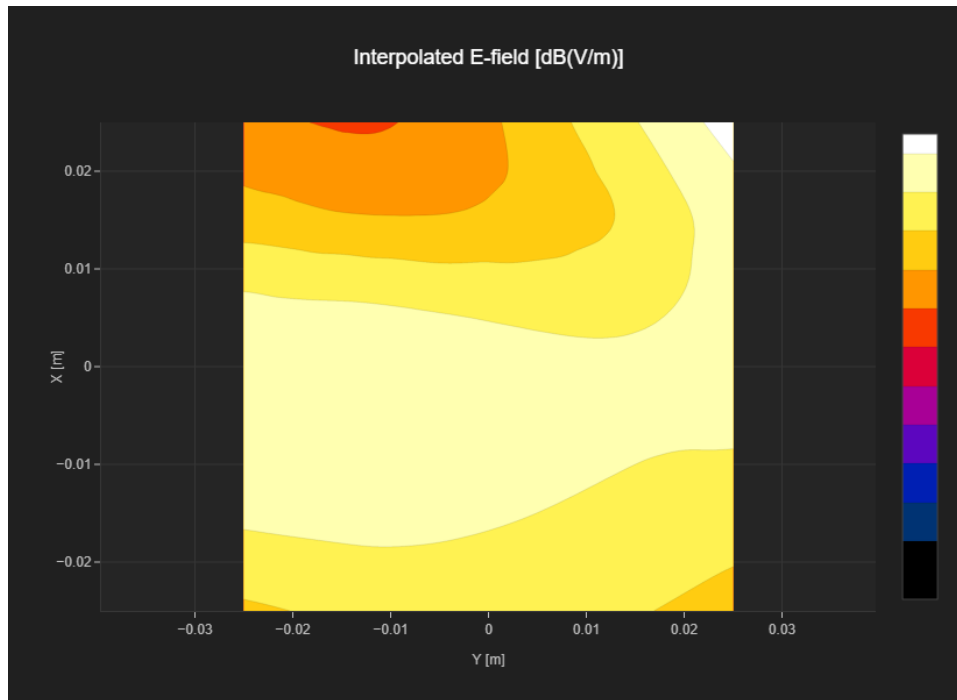
MIF 3.8
 Channel | Frequency [MHz] 810 | 1909.8
 Communication Systems' Name GPRS-FDD (TDMA, GMSK, TN 0)

Grid Settings

Extent X [mm]	50.0	Step X [mm]	10.0
Extent Y [mm]	50.0	Step Y [mm]	10.0
Distance [mm]	15.0		

Results

E _{max} [dBV/m]	22.79	E _{avg 50x50 Max} [dBV/m]	20.63
Drift [dB]	0.03	RFail [dBV/m]	24.43



PCS 1900 RF Interference Potential Test Report

Hardware Setup

Probe | Calibration Date EF3DV3 - SN4028 | September 04, 2023
DAE | Calibration Date DAE4 Sn1546 | March 11, 2024
Software Version 1.2.0.1713

Communication Systems

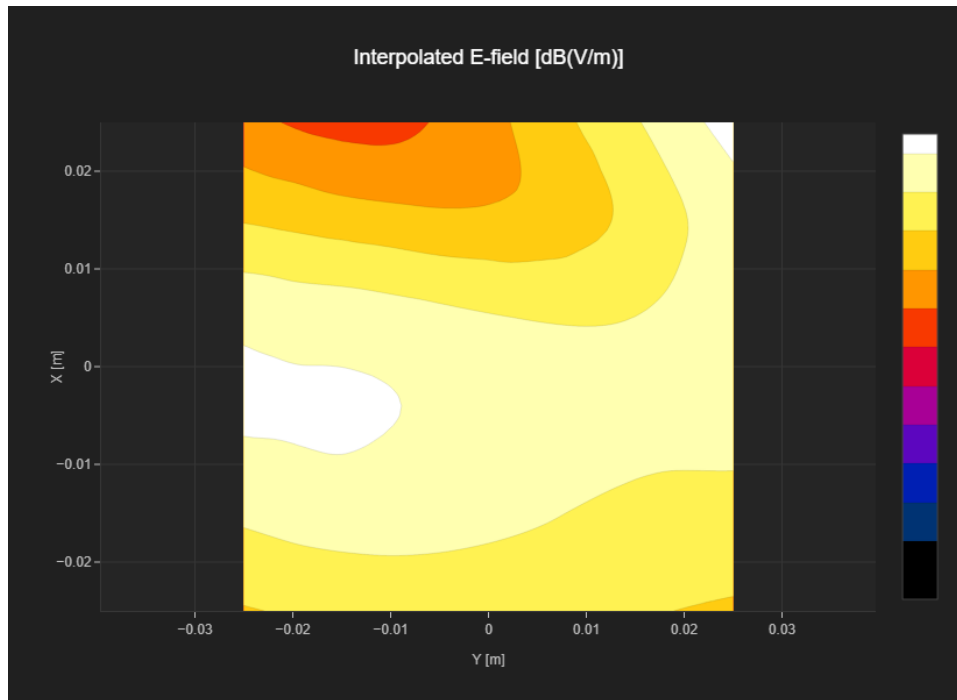
MIF 1.15
Channel | Frequency [MHz] 512 | 1850.2
Communication Systems' Name GPRS-FDD (TDMA, GMSK, TN 0-1)

Grid Settings

Extent X [mm]	50.0	Step X [mm]	10.0
Extent Y [mm]	50.0	Step Y [mm]	10.0
Distance [mm]	15.0		

Results

E _{max} [dBV/m]	24.75	E _{avg 50x50 Max} [dBV/m]	21.83
Drift [dB]	-0.12	RFail [dBV/m]	22.98



PCS 1900 RF Interference Potential Test Report

Hardware Setup

Probe | Calibration Date EF3DV3 - SN4028 | September 04, 2023
 DAE | Calibration Date DAE4 Sn1546 | March 11, 2024
 Software Version 1.2.0.1713

Communication Systems

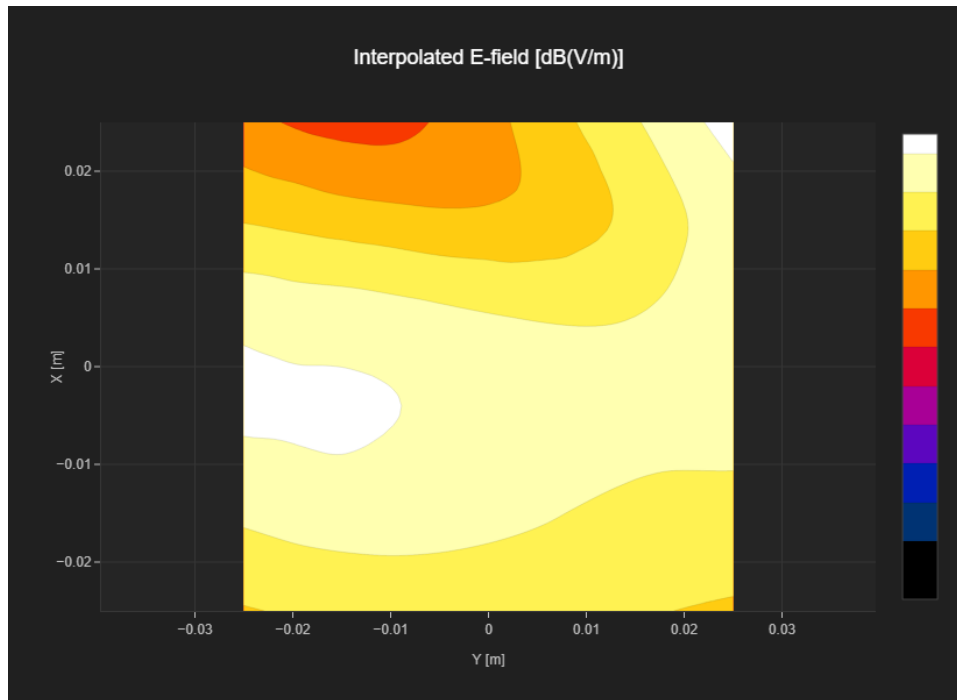
MIF 1.15
 Channel | Frequency [MHz] 661 | 1880.0
 Communication Systems' Name GPRS-FDD (TDMA, GMSK, TN 0-1)

Grid Settings

Extent X [mm]	50.0	Step X [mm]	10.0
Extent Y [mm]	50.0	Step Y [mm]	10.0
Distance [mm]	15.0		

Results

E _{max} [dBV/m]	24.86	E _{avg 50x50 Max} [dBV/m]	22.55
Drift [dB]	-0.09	RFail [dBV/m]	23.7



PCS 1900 RF Interference Potential Test Report

Hardware Setup

Probe | Calibration Date EF3DV3 - SN4028 | September 04, 2023
 DAE | Calibration Date DAE4 Sn1546 | March 11, 2024
 Software Version 1.2.0.1713

Communication Systems

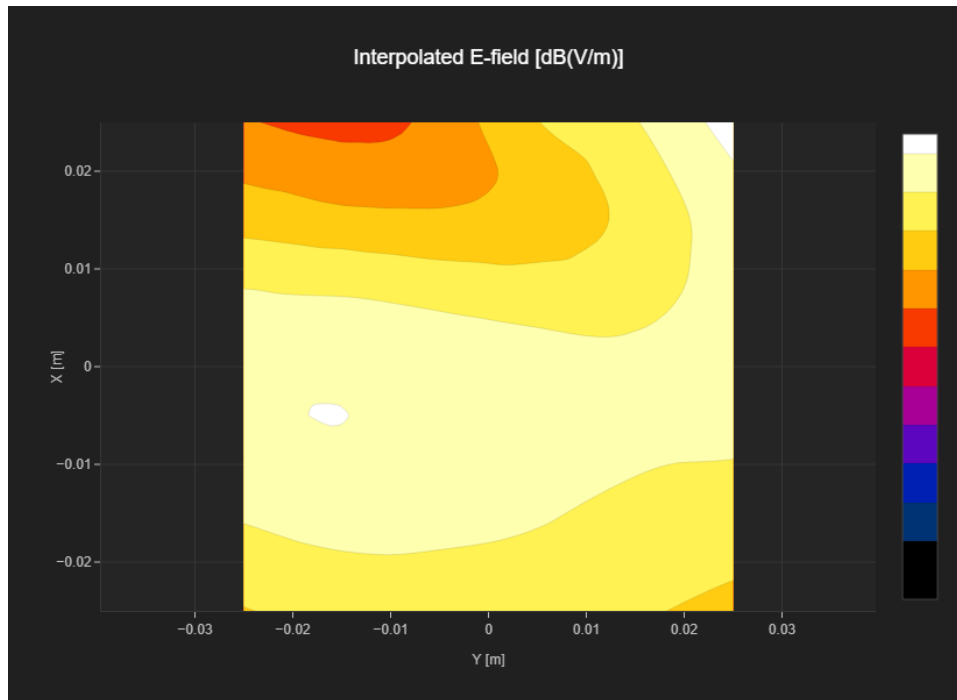
MIF 1.15
 Channel | Frequency [MHz] 810 | 1909.8
 Communication Systems' Name GPRS-FDD (TDMA, GMSK, TN 0-1)

Grid Settings

Extent X [mm]	50.0	Step X [mm]	10.0
Extent Y [mm]	50.0	Step Y [mm]	10.0
Distance [mm]	15.0		

Results

E _{max} [dBV/m]	24.63	E _{avg 50x50 Max} [dBV/m]	22.49
Drift [dB]	0.14	RFail [dBV/m]	23.64



PCS 1900 RF Interference Potential Test Report

Hardware Setup

Probe | Calibration Date EF3DV3 - SN4028 | September 04, 2023
 DAE | Calibration Date DAE4 Sn1546 | March 11, 2024
 Software Version 1.2.0.1713

Communication Systems

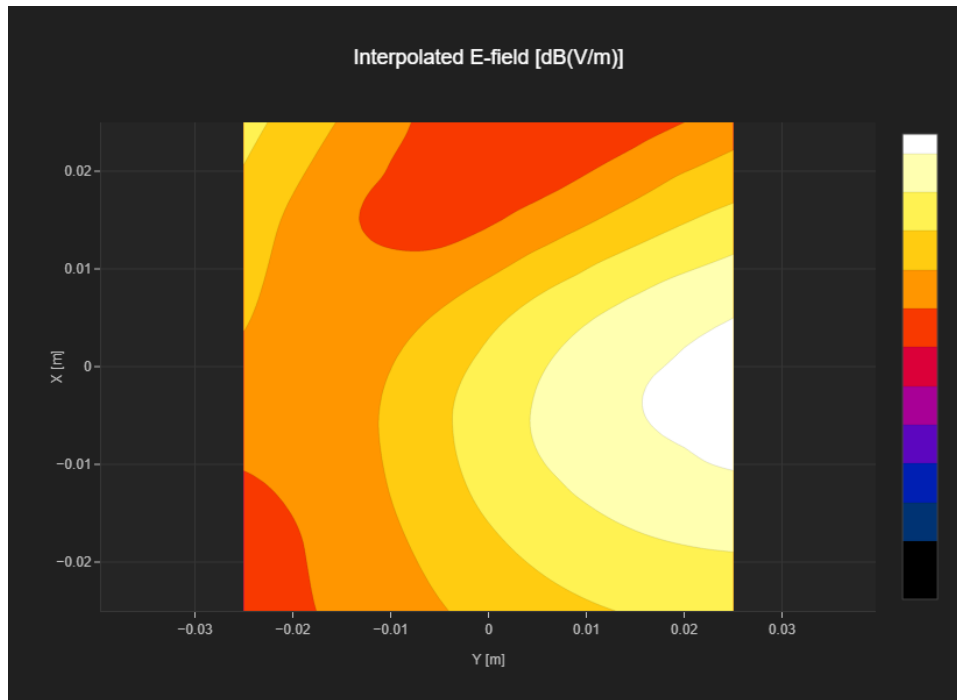
MIF 3.8
 Channel | Frequency [MHz] 512 | 1850.2
 Communication Systems' Name GPRS-FDD (TDMA, GMSK, TN 0)

Grid Settings

Extent X [mm]	50.0	Step X [mm]	10.0
Extent Y [mm]	50.0	Step Y [mm]	10.0
Distance [mm]	15.0		

Results

E _{max} [dBV/m]	28.27	E _{avg 50x50 Max} [dBV/m]	24.4
Drift [dB]	-0.76	RFail [dBV/m]	28.2



PCS 1900 RF Interference Potential Test Report

Hardware Setup

Probe | Calibration Date EF3DV3 - SN4028 | September 04, 2023
 DAE | Calibration Date DAE4 Sn1546 | March 11, 2024
 Software Version 1.2.0.1713

Communication Systems

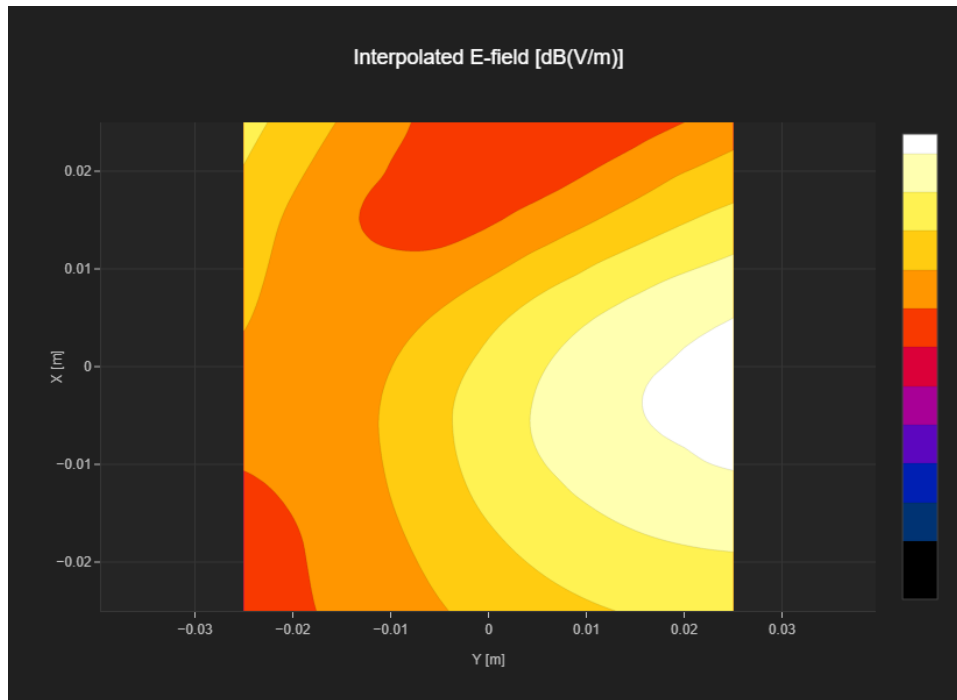
MIF 3.8
 Channel | Frequency [MHz] 661 | 1880.0
 Communication Systems' Name GPRS-FDD (TDMA, GMSK, TN 0)

Grid Settings

Extent X [mm]	50.0	Step X [mm]	10.0
Extent Y [mm]	50.0	Step Y [mm]	10.0
Distance [mm]	15.0		

Results

Emax [dBV/m]	28.43	Eavg 50x50 Max [dBV/m]	23.71
Drift [dB]	-0.01	RFail [dBV/m]	27.51



PCS 1900 RF Interference Potential Test Report

Hardware Setup

Probe | Calibration Date EF3DV3 - SN4028 | September 04, 2023
DAE | Calibration Date DAE4 Sn1546 | March 11, 2024
Software Version 1.2.0.1713

Communication Systems

MIF 3.8
Channel | Frequency [MHz] 810 | 1909.8
Communication Systems' Name GPRS-FDD (TDMA, GMSK, TN 0)

Grid Settings

Extent X [mm]	50.0	Step X [mm]	10.0
Extent Y [mm]	50.0	Step Y [mm]	10.0
Distance [mm]	15.0		

Results

E _{max} [dBV/m]	27.59	E _{avg 50x50 Max} [dBV/m]	22.75
Drift [dB]	-0.12	RFail [dBV/m]	26.55

