

# System Performance Check Report for D2600V2 - SN1006

## Exposure Conditions

Frequency [MHz]   Channel Number	2600.000   0	TSL Permittivity	41.1
Group   UID	CW   0--	TSL Conductivity [S/m]	1.85
Conversion Factor	6.46	Phantom Section   TSL	Flat   HSL

## Hardware Setup

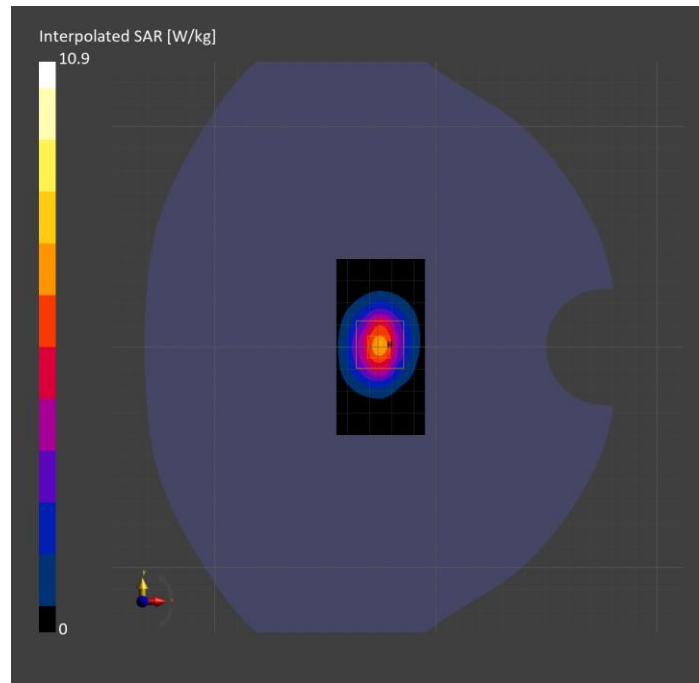
Probe   Calibration Date	EX3DV4 - SN3686   2024-01-12	Phantom	Twin-SAM V4.0 (30deg probe tilt)
DAE   Calibration Date	DAE4 Sn1547   2024-04-10	TSL Type	HBBL-600-10000
Software Version	16.2.4.2524		

## Scans Setup

	Area Scan	Zoom Scan
Grid Extents [mm]	40.0 x 80.0	30.0 x 30.0 x 30.0
Grid Steps [mm]	10.0 x 10.0	5.0 x 5.0 x 1.5
Sensor Surface [mm]	3.0	1.4
Graded Grid	N/A	Yes
M2/M1 [%]		79.9
Dist 3dB Peak [mm]		9.0

## Measurement Results

	Area Scan	Zoom Scan
psSAR1g [W/Kg]	5.30	5.26
psSAR10g [W/Kg]	2.36	2.43
Power Drift [dB]	N/A	-0.02



# System Performance Check Report for D2600V2 - SN1006

## Exposure Conditions

Frequency [MHz]   Channel Number	2600.000   0	TSL Permittivity	39.7
Group   UID	CW   0--	TSL Conductivity [S/m]	1.84
Conversion Factor	6.46	Phantom Section   TSL	Flat   HSL

## Hardware Setup

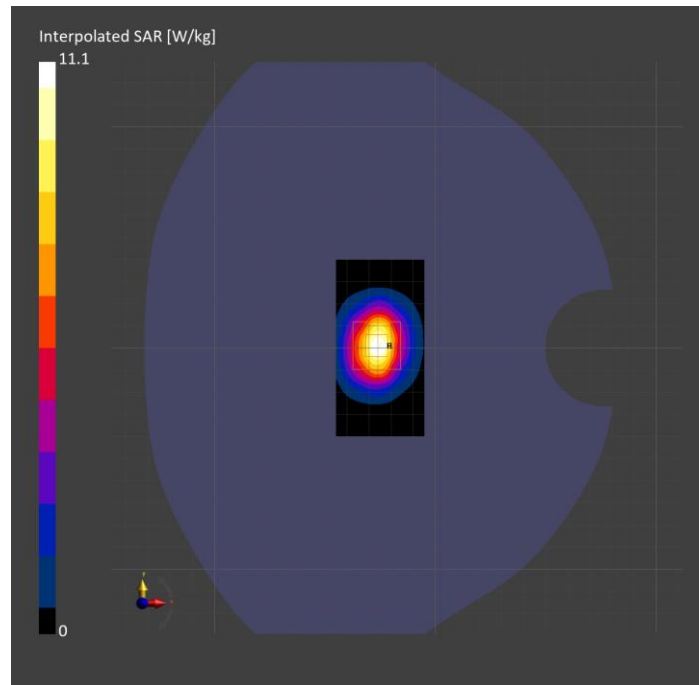
Probe   Calibration Date	EX3DV4 - SN3686   2024-01-12	Phantom	Twin-SAM V4.0 (30deg probe tilt)
DAE   Calibration Date	DAE4 Sn1547   2024-04-10	TSL Type	HBBL-600-10000
Software Version	16.2.4.2524		

## Scans Setup

	Area Scan	Zoom Scan
Grid Extents [mm]	40.0 x 80.0	30.0 x 30.0 x 30.0
Grid Steps [mm]	10.0 x 10.0	5.0 x 5.0 x 1.5
Sensor Surface [mm]	3.0	1.4
Graded Grid	N/A	Yes
M2/M1 [%]		77.2
Dist 3dB Peak [mm]		8.6

## Measurement Results

	Area Scan	Zoom Scan
psSAR1g [W/Kg]	4.79	5.05
psSAR10g [W/Kg]	2.15	2.33
Power Drift [dB]	N/A	0.03



# System Performance Check Report for D2300V2 - SN1002

## Exposure Conditions

Frequency [MHz]   Channel Number	2300.000   0	TSL Permittivity	41.8
Group   UID	CW   0--	TSL Conductivity [S/m]	1.58
Conversion Factor	6.54	Phantom Section   TSL	Flat   HSL

## Hardware Setup

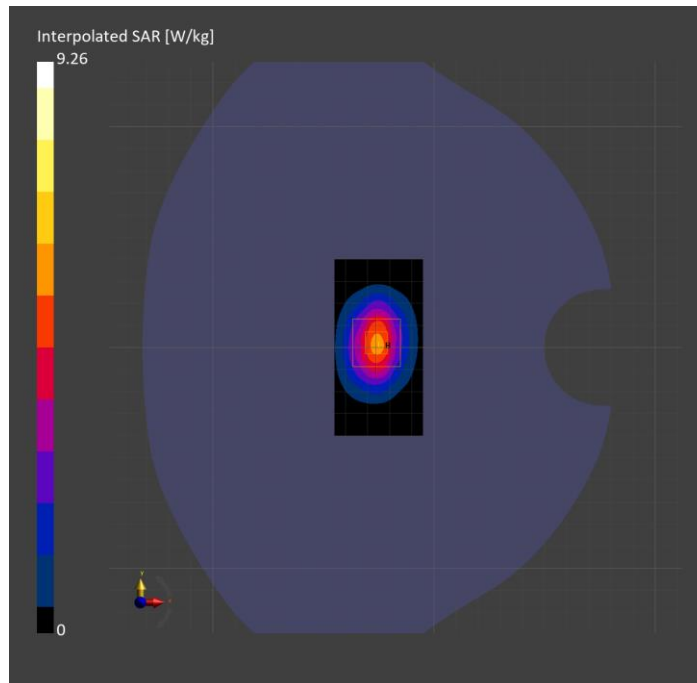
Probe   Calibration Date	EX3DV4 - SN3686   2024-01-12	Phantom	Twin-SAM V4.0 (30deg probe tilt)
DAE   Calibration Date	DAE4 Sn1547   2024-04-10	TSL Type	HBBL-600-10000
Software Version	16.2.4.2524		

## Scans Setup

	Area Scan	Zoom Scan
Grid Extents [mm]	40.0 x 80.0	30.0 x 30.0 x 30.0
Grid Steps [mm]	10.0 x 10.0	5.0 x 5.0 x 1.5
Sensor Surface [mm]	3.0	1.4
Graded Grid	N/A	Yes
M2/M1 [%]		80.3
Dist 3dB Peak [mm]		9.0

## Measurement Results

	Area Scan	Zoom Scan
psSAR1g [W/Kg]	4.48	<b>4.60</b>
psSAR10g [W/Kg]	2.13	<b>2.27</b>
Power Drift [dB]	N/A	0.02



# System Performance Check Report for D2300V2 - SN1058

## Exposure Conditions

Frequency [MHz]   Channel Number	2300.000   0	TSL Permittivity	39.1
Group   UID	CW   0--	TSL Conductivity [S/m]	1.58
Conversion Factor	6.54	Phantom Section   TSL	Flat   HSL

## Hardware Setup

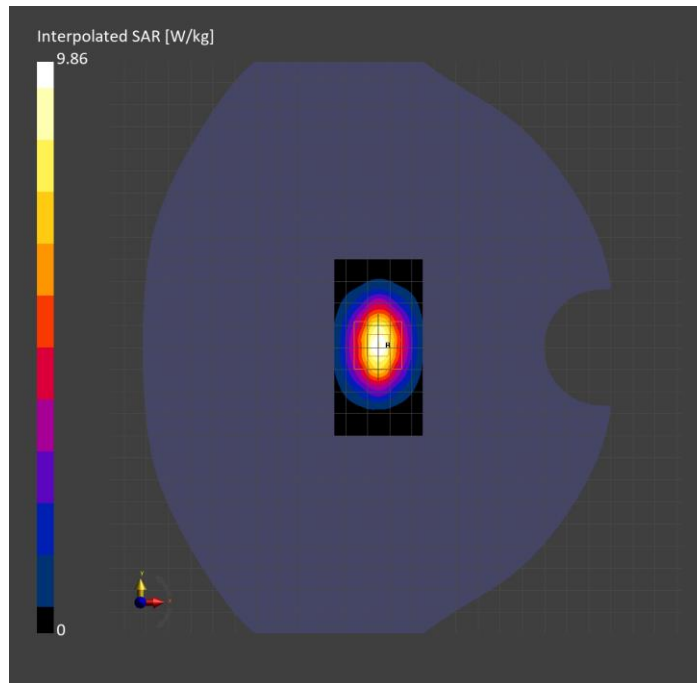
Probe   Calibration Date	EX3DV4 - SN3686   2024-01-12	Phantom	Twin-SAM V8.0 (30deg probe tilt)
DAE   Calibration Date	DAE4 Sn1547   2024-04-10	TSL Type	HBBL-600-10000
Software Version	16.2.4.2524		

## Scans Setup

	Area Scan	Zoom Scan
Grid Extents [mm]	40.0 x 80.0	30.0 x 30.0 x 30.0
Grid Steps [mm]	10.0 x 10.0	5.0 x 5.0 x 1.5
Sensor Surface [mm]	3.0	1.4
Graded Grid	N/A	Yes
M2/M1 [%]		80.8
Dist 3dB Peak [mm]		9.0

## Measurement Results

	Area Scan	Zoom Scan
psSAR1g [W/Kg]	4.99	5.02
psSAR10g [W/Kg]	2.35	2.49
Power Drift [dB]	N/A	-0.01



# System Performance Check Report for D2300V2 - SN1058

## Exposure Conditions

Frequency [MHz]   Channel Number	2300.000   0	TSL Permittivity	40.6
Group   UID	CW   0--	TSL Conductivity [S/m]	1.65
Conversion Factor	7.82	Phantom Section   TSL	Flat   HSL

## Hardware Setup

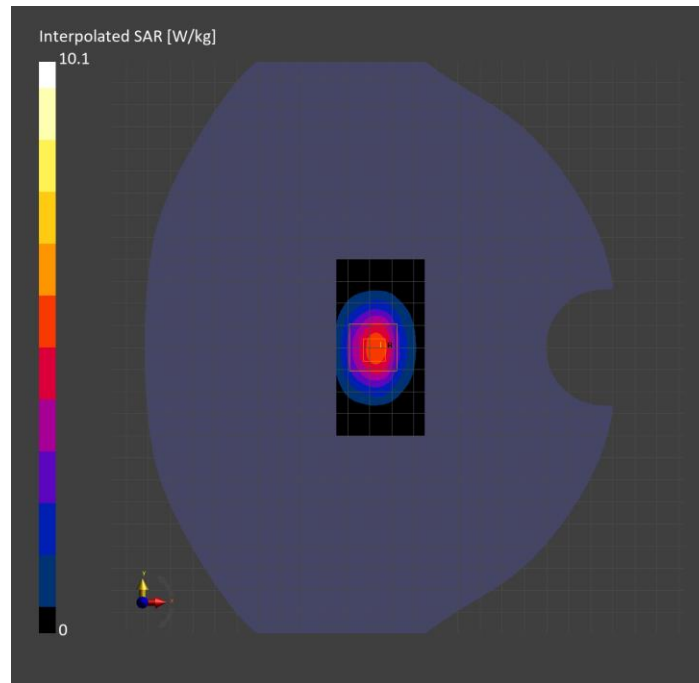
Probe   Calibration Date	EX3DV4 - SN3885   2023-10-12	Phantom	Twin-SAM V8.0 (30deg probe tilt)
DAE   Calibration Date	DAE4 Sn1359   2024-01-16	TSL Type	HBBL-600-10000
Software Version	16.2.4.2524		

## Scans Setup

	Area Scan	Zoom Scan
Grid Extents [mm]	40.0 x 80.0	30.0 x 30.0 x 30.0
Grid Steps [mm]	10.0 x 10.0	5.0 x 5.0 x 1.5
Sensor Surface [mm]	3.0	1.4
Graded Grid	N/A	Yes
M2/M1 [%]		78.2
Dist 3dB Peak [mm]		9.0

## Measurement Results

	Area Scan	Zoom Scan
psSAR1g [W/Kg]	4.55	<b>4.80</b>
psSAR10g [W/Kg]	2.24	<b>2.29</b>
Power Drift [dB]	N/A	0.00



# System Performance Check Report for D2600V2 - SN1036

## Exposure Conditions

Frequency [MHz]   Channel Number	2600.000   0	TSL Permittivity	40.5
Group   UID	CW   0--	TSL Conductivity [S/m]	1.94
Conversion Factor	7.64	Phantom Section   TSL	Flat   HSL

## Hardware Setup

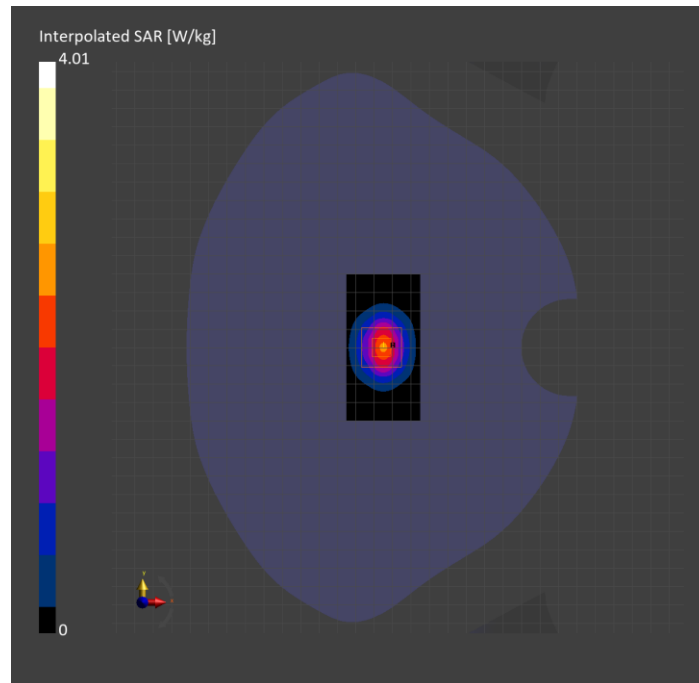
Probe   Calibration Date	EX3DV4 - SN3885   2023-10-12	Phantom	Twin-SAM V8.0 (30deg probe tilt)
DAE   Calibration Date	DAE4 Sn1359   2024-01-16	TSL Type	HBBL-600-10000
Software Version	16.2.4.2524		

## Scans Setup

	Area Scan	Zoom Scan
Grid Extents [mm]	40.0 x 80.0	30.0 x 30.0 x 30.0
Grid Steps [mm]	10.0 x 10.0	5.0 x 5.0 x 1.5
Sensor Surface [mm]	3.0	1.4
Graded Grid	N/A	Yes
M2/M1 [%]		77.7
Dist 3dB Peak [mm]		9.0

## Measurement Results

	Area Scan	Zoom Scan
psSAR1g [W/Kg]	1.81	<b>1.83</b>
psSAR10g [W/Kg]	0.809	<b>0.823</b>
Power Drift [dB]	N/A	0.00



# System Performance Check Report for D2600V2 - SN1006

## Exposure Conditions

Frequency [MHz]   Channel Number	2600.000   0	TSL Permittivity	39.0
Group   UID	CW   0--	TSL Conductivity [S/m]	1.89
Conversion Factor	7.64	Phantom Section   TSL	Flat   HSL

## Hardware Setup

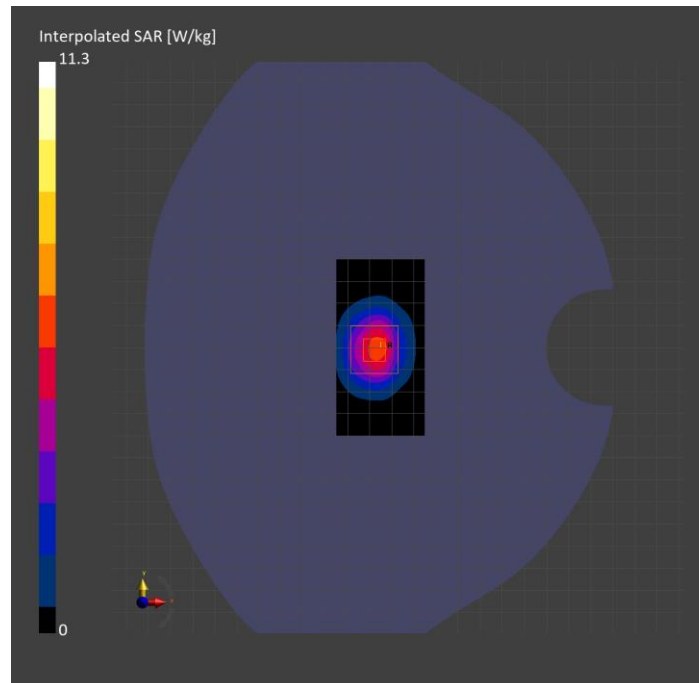
Probe   Calibration Date	EX3DV4 - SN3885   2023-10-12	Phantom	Twin-SAM V8.0 (30deg probe tilt)
DAE   Calibration Date	DAE4 Sn1359   2024-01-16	TSL Type	HBBL-600-10000
Software Version	16.2.4.2524		

## Scans Setup

	Area Scan	Zoom Scan
Grid Extents [mm]	40.0 x 80.0	30.0 x 30.0 x 30.0
Grid Steps [mm]	10.0 x 10.0	5.0 x 5.0 x 1.5
Sensor Surface [mm]	3.0	1.4
Graded Grid	N/A	Yes
M2/M1 [%]		76.5
Dist 3dB Peak [mm]		9.0

## Measurement Results

	Area Scan	Zoom Scan
psSAR1g [W/Kg]	4.84	5.10
psSAR10g [W/Kg]	2.24	2.29
Power Drift [dB]	N/A	-0.04



# System Performance Check Report for D3900V2 - SN1102

## Exposure Conditions

Frequency [MHz]   Channel Number	3900.000   0	TSL Permittivity	35.2
Group   UID	CW   0--	TSL Conductivity [S/m]	3.29
Conversion Factor	7.12	Phantom Section   TSL	Flat   HSL

## Hardware Setup

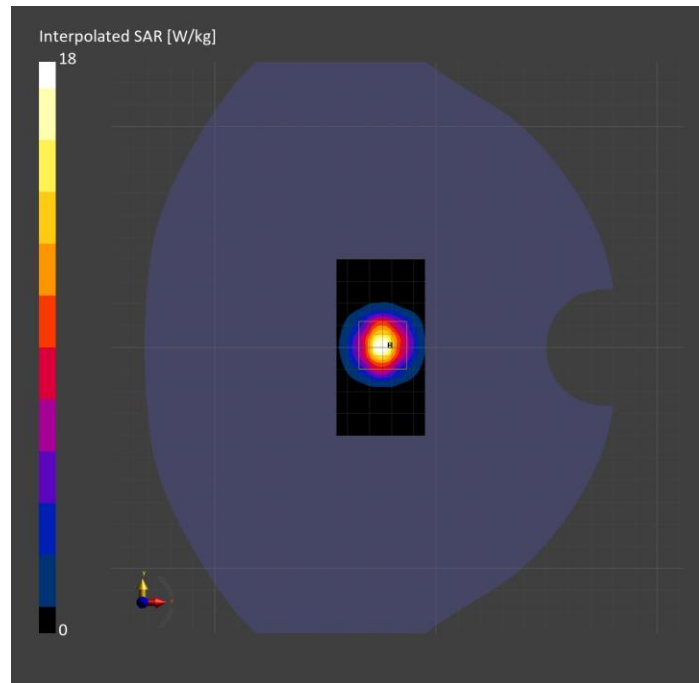
Probe   Calibration Date	EX3DV4 - SN7356   2024-03-14	Phantom	Twin-SAM V5.0 (30deg probe tilt)
DAE   Calibration Date	DAE4 Sn1259   2023-09-06	TSL Type	HBBL-600-10000
Software Version	16.2.4.2524		

## Scans Setup

	Area Scan	Zoom Scan
Grid Extents [mm]	40.0 x 80.0	28.0 x 28.0 x 28.0
Grid Steps [mm]	10.0 x 10.0	5.0 x 5.0 x 1.4
Sensor Surface [mm]	3.0	1.4
Graded Grid	N/A	Yes
M2/M1 [%]		73.4
Dist 3dB Peak [mm]		8.1

## Measurement Results

	Area Scan	Zoom Scan
psSAR1g [W/Kg]	6.13	6.26
psSAR10g [W/Kg]	2.15	2.17
Power Drift [dB]	N/A	-0.00





# System Performance Check Report for D3500V2 - SN1060

## Exposure Conditions

Frequency [MHz]   Channel Number	3500.000   0	TSL Permittivity	38.4
Group   UID	CW   0--	TSL Conductivity [S/m]	3.01
Conversion Factor	6.91	Phantom Section   TSL	Flat   HSL

## Hardware Setup

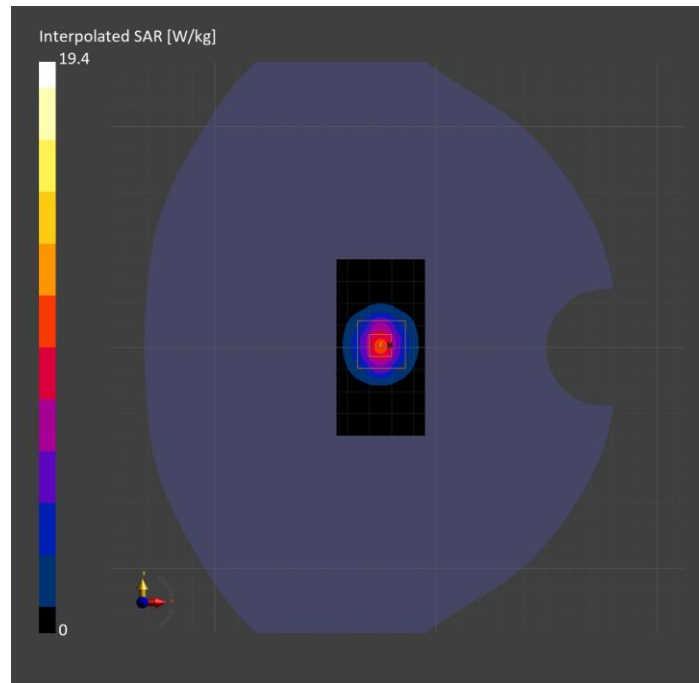
Probe   Calibration Date	EX3DV4 - SN7356   2024-03-14	Phantom	Twin-SAM V5.0 (30deg probe tilt)
DAE   Calibration Date	DAE4 Sn1259   2023-09-06	TSL Type	HBBL-600-10000
Software Version	16.2.4.2524		

## Scans Setup

	Area Scan	Zoom Scan
Grid Extents [mm]	40.0 x 80.0	28.0 x 28.0 x 28.0
Grid Steps [mm]	10.0 x 10.0	5.0 x 5.0 x 1.4
Sensor Surface [mm]	3.0	1.4
Graded Grid	N/A	Yes
M2/M1 [%]		74.0
Dist 3dB Peak [mm]		8.6

## Measurement Results

	Area Scan	Zoom Scan
psSAR1g [W/Kg]	7.43	7.19
psSAR10g [W/Kg]	2.83	2.69
Power Drift [dB]	N/A	-0.09



# System Performance Check Report for D3500V2 - SN1060

## Exposure Conditions

Frequency [MHz]   Channel Number	3500.000   0	TSL Permittivity	40.4
Group   UID	CW   0--	TSL Conductivity [S/m]	2.71
Conversion Factor	6.75	Phantom Section   TSL	Flat   HSL

## Hardware Setup

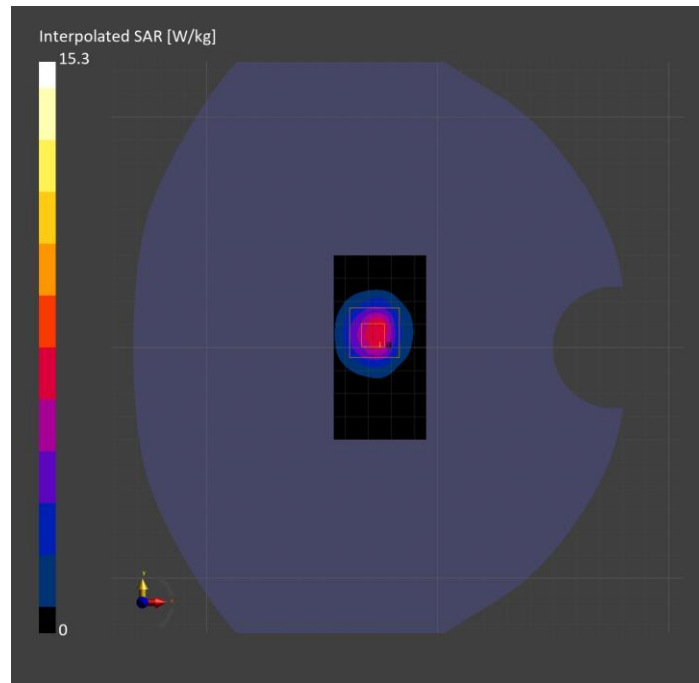
Probe   Calibration Date	EX3DV4 - SN3990   2024-02-28	Phantom	Twin-SAM V5.0 (30deg probe tilt)
DAE   Calibration Date	DAE4 Sn1540   2024-01-17	TSL Type	HBBL-600-10000
Software Version	16.2.4.2524		

## Scans Setup

	Area Scan	Zoom Scan
Grid Extents [mm]	40.0 x 80.0	28.0 x 28.0 x 28.0
Grid Steps [mm]	10.0 x 10.0	5.0 x 5.0 x 1.4
Sensor Surface [mm]	3.0	1.4
Graded Grid	N/A	Yes
M2/M1 [%]		76.4
Dist 3dB Peak [mm]		8.0

## Measurement Results

	Area Scan	Zoom Scan
psSAR1g [W/Kg]	5.59	6.09
psSAR10g [W/Kg]	2.23	2.36
Power Drift [dB]	N/A	0.01



# System Performance Check Report for D3900V2 - SN1102

## Exposure Conditions

Frequency [MHz]   Channel Number	3900.000   0	TSL Permittivity	39.8
Group   UID	CW   0--	TSL Conductivity [S/m]	3.10
Conversion Factor	6.66	Phantom Section   TSL	Flat   HSL

## Hardware Setup

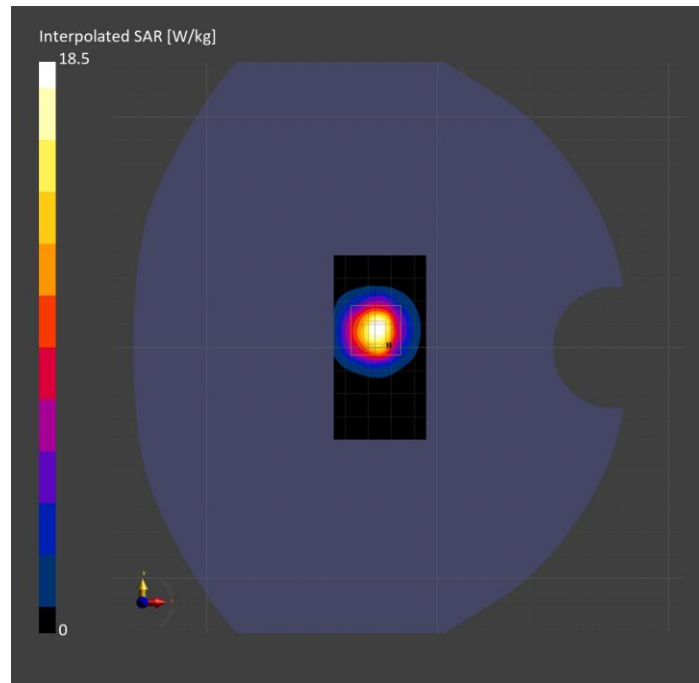
Probe   Calibration Date	EX3DV4 - SN3990   2024-02-28	Phantom	Twin-SAM V5.0 (30deg probe tilt)
DAE   Calibration Date	DAE4 Sn1540   2024-01-17	TSL Type	HBBL-600-10000
Software Version	16.2.4.2524		

## Scans Setup

	Area Scan	Zoom Scan
Grid Extents [mm]	40.0 x 80.0	28.0 x 28.0 x 28.0
Grid Steps [mm]	10.0 x 10.0	5.0 x 5.0 x 1.4
Sensor Surface [mm]	3.0	1.4
Graded Grid	N/A	Yes
M2/M1 [%]		72.7
Dist 3dB Peak [mm]		8.0

## Measurement Results

	Area Scan	Zoom Scan
psSAR1g [W/Kg]	5.89	<b>6.44</b>
psSAR10g [W/Kg]	2.13	<b>2.28</b>
Power Drift [dB]	N/A	0.01



# System Performance Check Report for CLA-13 - SN1008

## Exposure Conditions

Frequency [MHz]   Channel Number	13.000   0	TSL Permittivity	54.3
Group   UID	CW   0--	TSL Conductivity [S/m]	0.705
Conversion Factor	17.98	Phantom Section   TSL	Flat   HSL

## Hardware Setup

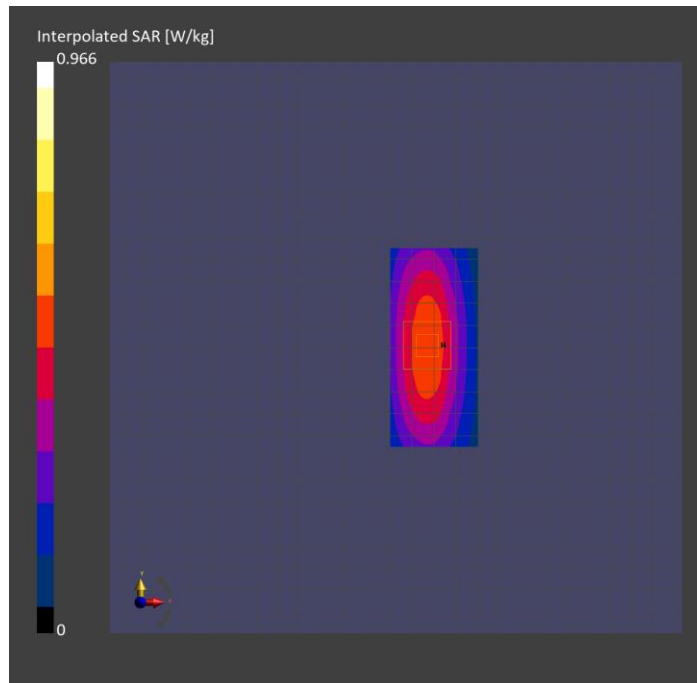
Probe   Calibration Date	EX3DV4 - SN3991   2023-10-12	Phantom	ELI V5.0 (20deg probe tilt)
DAE   Calibration Date	DAE4 Sn1380   2024-02-09	TSL Type	HBBL-600-10000
Software Version	16.2.4.2524		

## Scans Setup

	Area Scan	Zoom Scan
Grid Extents [mm]	40.0 x 90.0	30.0 x 30.0 x 30.0
Grid Steps [mm]	10.0 x 15.0	6.0 x 6.0 x 1.5
Sensor Surface [mm]	3.0	1.4
Graded Grid	N/A	Yes
M2/M1 [%]		76.8
Dist 3dB Peak [mm]		14.5

## Measurement Results

	Area Scan	Zoom Scan
psSAR1g [W/Kg]	0.522	<b>0.493</b>
psSAR10g [W/Kg]	0.421	<b>0.305</b>
Power Drift [dB]	N/A	-0.00



# System Performance Check Report for D3500V2 - SN1060

## Exposure Conditions

Frequency [MHz]   Channel Number	3500.000   0	TSL Permittivity	37.1
Group   UID	CW   0--	TSL Conductivity [S/m]	2.72
Conversion Factor	7.07	Phantom Section   TSL	Flat   HSL

## Hardware Setup

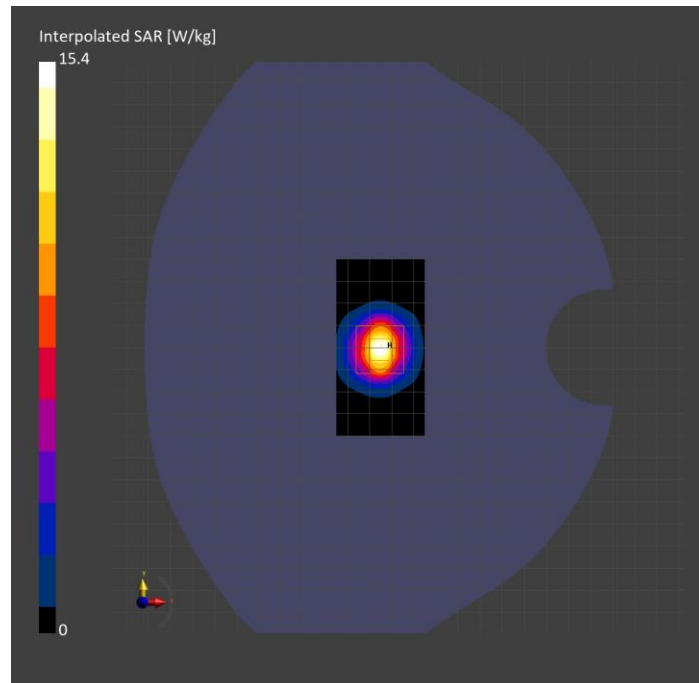
Probe   Calibration Date	EX3DV4 - SN3991   2023-10-12	Phantom	Twin-SAM V5.0 (30deg probe tilt)
DAE   Calibration Date	DAE4 Sn1380   2024-02-09	TSL Type	HBBL-600-10000
Software Version	16.2.4.2524		

## Scans Setup

	Area Scan	Zoom Scan
Grid Extents [mm]	40.0 x 80.0	28.0 x 28.0 x 28.0
Grid Steps [mm]	10.0 x 10.0	5.0 x 5.0 x 1.4
Sensor Surface [mm]	3.0	1.4
Graded Grid	N/A	Yes
M2/M1 [%]		76.8
Dist 3dB Peak [mm]		8.0

## Measurement Results

	Area Scan	Zoom Scan
psSAR1g [W/Kg]	5.91	6.10
psSAR10g [W/Kg]	2.25	2.37
Power Drift [dB]	N/A	-0.06



# System Performance Check Report for D3900V2 - SN1102

## Exposure Conditions

Frequency [MHz]   Channel Number	3900.000   0	TSL Permittivity	36.5
Group   UID	CW   0--	TSL Conductivity [S/m]	3.10
Conversion Factor	6.82	Phantom Section   TSL	Flat   HSL

## Hardware Setup

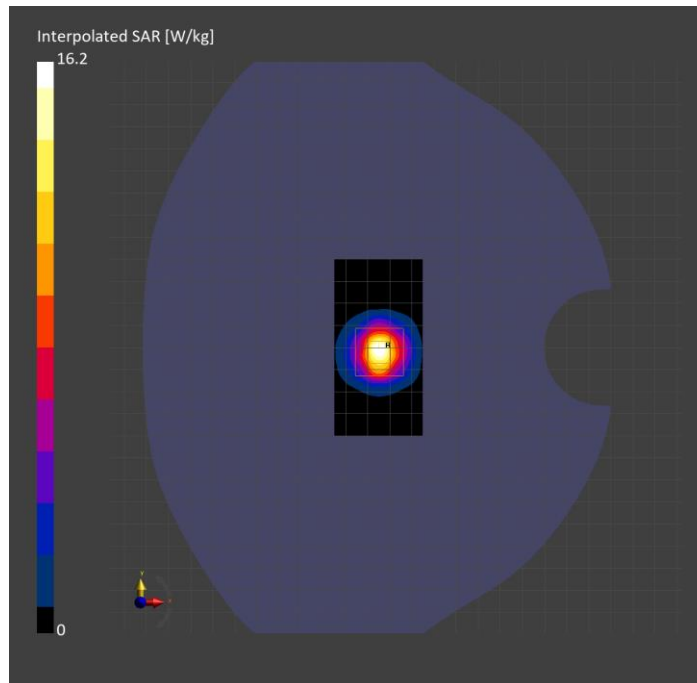
Probe   Calibration Date	EX3DV4 - SN3991   2023-10-12	Phantom	Twin-SAM V5.0 (30deg probe tilt)
DAE   Calibration Date	DAE4 Sn1380   2024-02-09	TSL Type	HBBL-600-10000
Software Version	16.2.4.2524		

## Scans Setup

	Area Scan	Zoom Scan
Grid Extents [mm]	40.0 x 80.0	28.0 x 28.0 x 28.0
Grid Steps [mm]	10.0 x 10.0	5.0 x 5.0 x 1.4
Sensor Surface [mm]	3.0	1.4
Graded Grid	N/A	Yes
M2/M1 [%]		78.8
Dist 3dB Peak [mm]		8.0

## Measurement Results

	Area Scan	Zoom Scan
psSAR1g [W/Kg]	6.06	6.31
psSAR10g [W/Kg]	2.14	2.29
Power Drift [dB]	N/A	0.01



# System Performance Check Report for D2300V2 - SN1002

## Exposure Conditions

Frequency [MHz]   Channel Number	2300.000   0	TSL Permittivity	37.1
Group   UID	CW   0--	TSL Conductivity [S/m]	1.74
Conversion Factor	7.98	Phantom Section   TSL	Flat   HSL

## Hardware Setup

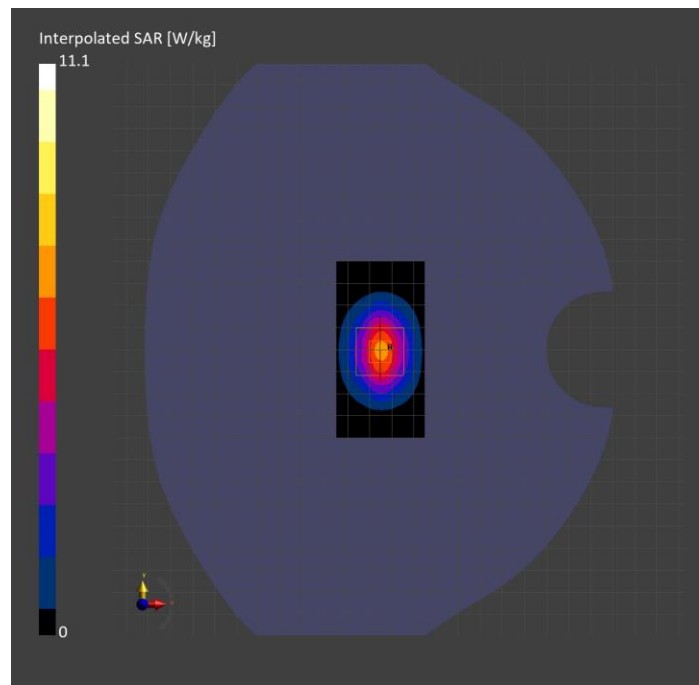
Probe   Calibration Date	EX3DV4 - SN3991   2023-10-12	Phantom	Twin-SAM V5.0 (30deg probe tilt)
DAE   Calibration Date	DAE4 Sn1380   2024-02-09	TSL Type	HBBL-600-10000
Software Version	16.2.4.2524		

## Scans Setup

	Area Scan	Zoom Scan
Grid Extents [mm]	40.0 x 80.0	30.0 x 30.0 x 30.0
Grid Steps [mm]	10.0 x 10.0	5.0 x 5.0 x 1.5
Sensor Surface [mm]	3.0	1.4
Graded Grid	N/A	Yes
M2/M1 [%]		80.0
Dist 3dB Peak [mm]		9.0

## Measurement Results

	Area Scan	Zoom Scan
psSAR1g [W/Kg]	5.34	5.30
psSAR10g [W/Kg]	2.54	2.55
Power Drift [dB]	N/A	0.01



# System Performance Check Report for D2600V2 - SN1036

## Exposure Conditions

Frequency [MHz]   Channel Number	2600.000   0	TSL Permittivity	37.0
Group   UID	CW   0--	TSL Conductivity [S/m]	2.02
Conversion Factor	7.63	Phantom Section   TSL	Flat   HSL

## Hardware Setup

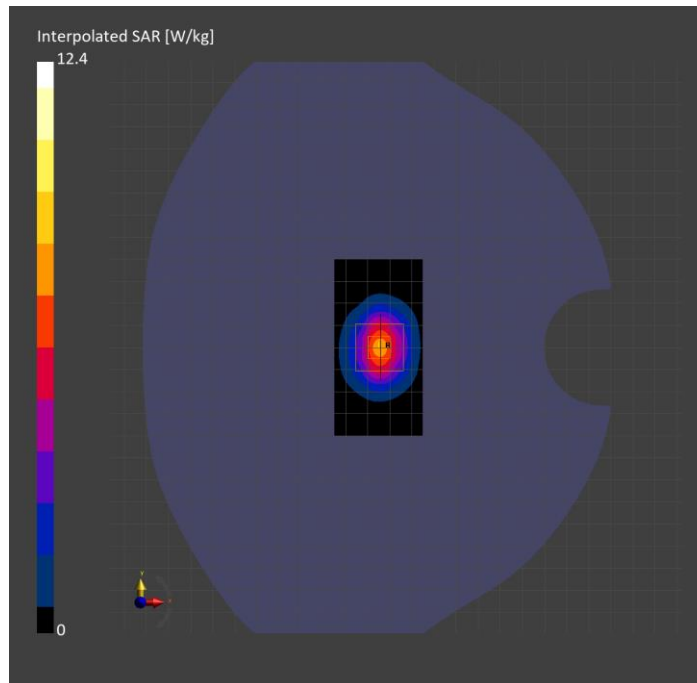
Probe   Calibration Date	EX3DV4 - SN3991   2023-10-12	Phantom	Twin-SAM V5.0 (30deg probe tilt)
DAE   Calibration Date	DAE4 Sn1380   2024-02-09	TSL Type	HBBL-600-10000
Software Version	16.2.4.2524		

## Scans Setup

	Area Scan	Zoom Scan
Grid Extents [mm]	40.0 x 80.0	30.0 x 30.0 x 30.0
Grid Steps [mm]	10.0 x 10.0	5.0 x 5.0 x 1.5
Sensor Surface [mm]	3.0	1.4
Graded Grid	N/A	Yes
M2/M1 [%]		80.0
Dist 3dB Peak [mm]		9.0

## Measurement Results

	Area Scan	Zoom Scan
psSAR1g [W/Kg]	5.93	5.83
psSAR10g [W/Kg]	2.66	2.65
Power Drift [dB]	N/A	-0.07





# System Performance Check Report for D2300V2 - SN1058

## Exposure Conditions

Frequency [MHz]   Channel Number	2300.000   0	TSL Permittivity	39.6
Group   UID	CW   0--	TSL Conductivity [S/m]	1.69
Conversion Factor	7.39	Phantom Section   TSL	Flat   HSL

## Hardware Setup

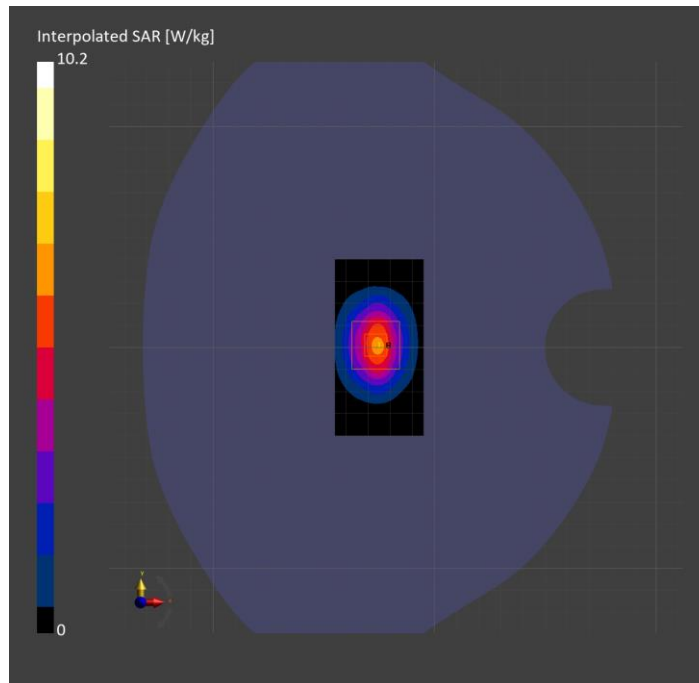
Probe   Calibration Date	EX3DV4 - SN3929   2024-03-14	Phantom	Twin-SAM V5.0 (30deg probe tilt)
DAE   Calibration Date	DAE4 Sn1546   2024-03-11	TSL Type	HBBL-600-10000
Software Version	16.2.4.2524		

## Scans Setup

	Area Scan	Zoom Scan
Grid Extents [mm]	40.0 x 80.0	30.0 x 30.0 x 30.0
Grid Steps [mm]	10.0 x 10.0	5.0 x 5.0 x 1.5
Sensor Surface [mm]	3.0	1.4
Graded Grid	N/A	Yes
M2/M1 [%]		79.4
Dist 3dB Peak [mm]		9.0

## Measurement Results

	Area Scan	Zoom Scan
psSAR1g [W/Kg]	4.85	<b>4.95</b>
psSAR10g [W/Kg]	2.33	<b>2.40</b>
Power Drift [dB]	N/A	0.00



# System Performance Check Report for D2600V2 - SN1006

## Exposure Conditions

Frequency [MHz]   Channel Number	2600.000   0	TSL Permittivity	39.1
Group   UID	CW   0--	TSL Conductivity [S/m]	1.94
Conversion Factor	7.07	Phantom Section   TSL	Flat   HSL

## Hardware Setup

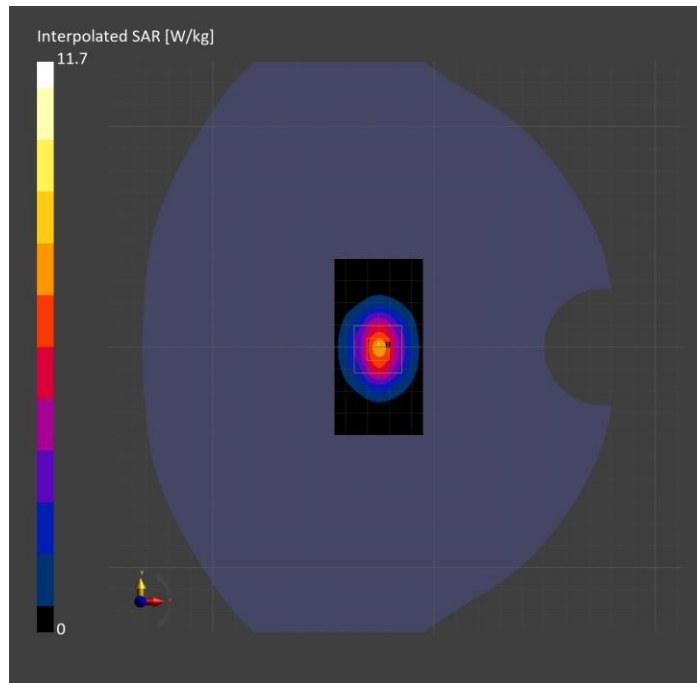
Probe   Calibration Date	EX3DV4 - SN3929   2024-03-14	Phantom	Twin-SAM V5.0 (30deg probe tilt)
DAE   Calibration Date	DAE4 Sn1546   2024-03-11	TSL Type	HBBL-600-10000
Software Version	16.2.4.2524		

## Scans Setup

	Area Scan	Zoom Scan
Grid Extents [mm]	40.0 x 80.0	30.0 x 30.0 x 30.0
Grid Steps [mm]	10.0 x 10.0	5.0 x 5.0 x 1.5
Sensor Surface [mm]	3.0	1.4
Graded Grid	N/A	Yes
M2/M1 [%]		79.5
Dist 3dB Peak [mm]		9.0

## Measurement Results

	Area Scan	Zoom Scan
psSAR1g [W/Kg]	5.52	5.48
psSAR10g [W/Kg]	2.45	2.50
Power Drift [dB]	N/A	0.01



# System Performance Check Report for D2600V2 - SN1006

## Exposure Conditions

Frequency [MHz]   Channel Number	2600.000   0	TSL Permittivity	41.2
Group   UID	CW   0--	TSL Conductivity [S/m]	1.94
Conversion Factor	7.4	Phantom Section   TSL	Flat   HSL

## Hardware Setup

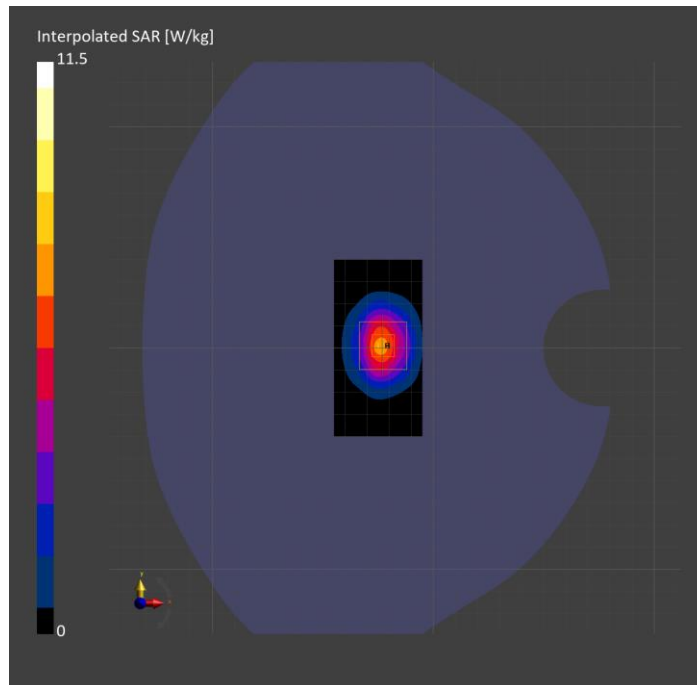
Probe   Calibration Date	EX3DV4 - SN7335   2024-01-09	Phantom	Twin-SAM V8.0 (30deg probe tilt)
DAE   Calibration Date	DAE4ip Sn1619   2024-04-11	TSL Type	HBBL-600-10000
Software Version	16.2.4.2524		

## Scans Setup

	Area Scan	Zoom Scan
Grid Extents [mm]	40.0 x 80.0	30.0 x 30.0 x 30.0
Grid Steps [mm]	10.0 x 10.0	5.0 x 5.0 x 1.5
Sensor Surface [mm]	3.0	1.4
Graded Grid	N/A	Yes
M2/M1 [%]		79.1
Dist 3dB Peak [mm]		9.0

## Measurement Results

	Area Scan	Zoom Scan
psSAR1g [W/Kg]	5.46	5.39
psSAR10g [W/Kg]	2.48	2.43
Power Drift [dB]	N/A	-0.03



# System Performance Check Report for D3500V2 - SN1060

## Exposure Conditions

Frequency [MHz]   Channel Number	3500.000   0	TSL Permittivity	38.4
Group   UID	CW   0--	TSL Conductivity [S/m]	2.76
Conversion Factor	6.8	Phantom Section   TSL	Flat   HSL

## Hardware Setup

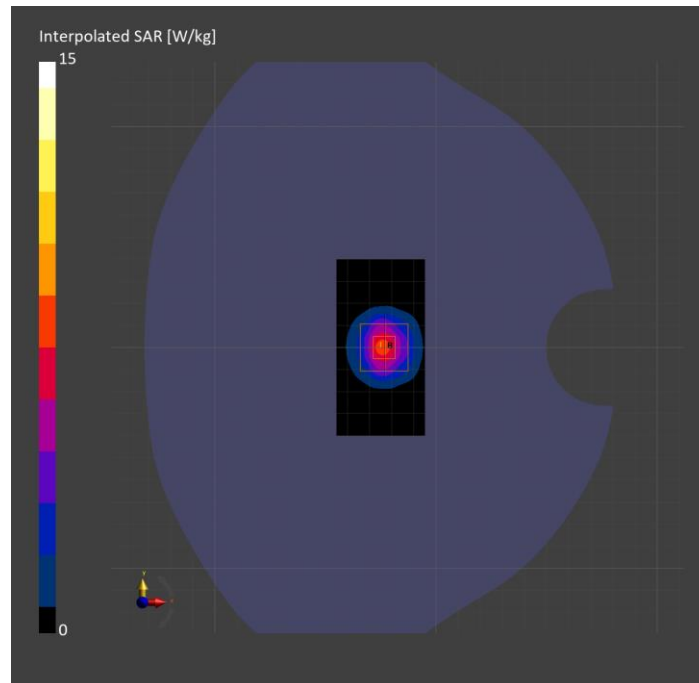
Probe   Calibration Date	EX3DV4 - SN7335   2024-01-09	Phantom	Twin-SAM V8.0 (30deg probe tilt)
DAE   Calibration Date	DAE4ip Sn1619   2024-04-11	TSL Type	HBBL-600-10000
Software Version	16.2.4.2524		

## Scans Setup

	Area Scan	Zoom Scan
Grid Extents [mm]	40.0 x 80.0	28.0 x 28.0 x 28.0
Grid Steps [mm]	10.0 x 10.0	5.0 x 5.0 x 1.4
Sensor Surface [mm]	3.0	1.4
Graded Grid	N/A	Yes
M2/M1 [%]		76.5
Dist 3dB Peak [mm]		9.0

## Measurement Results

	Area Scan	Zoom Scan
psSAR1g [W/Kg]	5.81	5.98
psSAR10g [W/Kg]	2.26	2.32
Power Drift [dB]	N/A	0.00



# System Performance Check Report for D2600V2 - SN1036

## Exposure Conditions

Frequency [MHz]   Channel Number	2600.000   0	TSL Permittivity	36.5
Group   UID	CW   0--	TSL Conductivity [S/m]	1.95
Conversion Factor	7.4	Phantom Section   TSL	Flat   HSL

## Hardware Setup

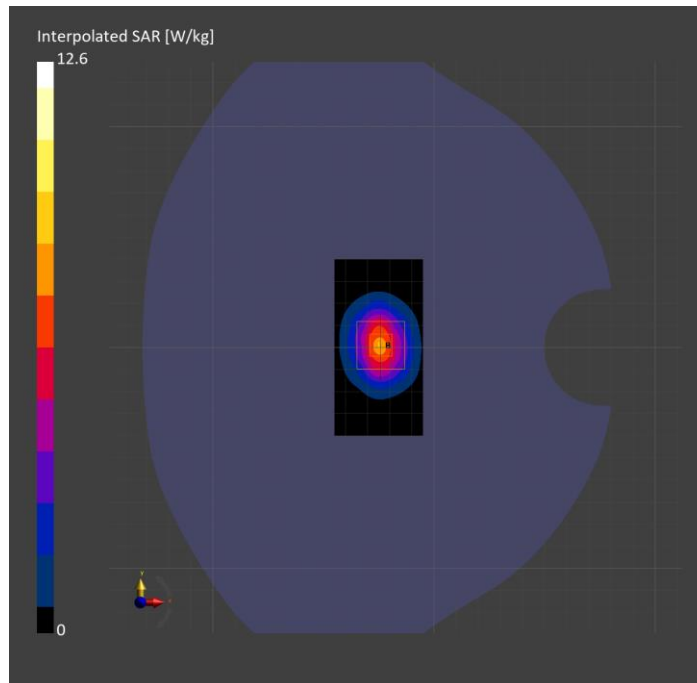
Probe   Calibration Date	EX3DV4 - SN7335   2024-01-09	Phantom	Twin-SAM V8.0 (30deg probe tilt)
DAE   Calibration Date	DAE4ip Sn1619   2024-04-11	TSL Type	HBBL-600-10000
Software Version	16.2.4.2524		

## Scans Setup

	Area Scan	Zoom Scan
Grid Extents [mm]	40.0 x 80.0	30.0 x 30.0 x 30.0
Grid Steps [mm]	10.0 x 10.0	5.0 x 5.0 x 1.5
Sensor Surface [mm]	3.0	1.4
Graded Grid	N/A	Yes
M2/M1 [%]		79.6
Dist 3dB Peak [mm]		9.0

## Measurement Results

	Area Scan	Zoom Scan
psSAR1g [W/Kg]	5.95	<b>5.98</b>
psSAR10g [W/Kg]	2.68	<b>2.72</b>
Power Drift [dB]	N/A	0.01



# System Performance Check Report for D5GHzV2 - SN1168

## Exposure Conditions

Frequency [MHz]   Channel Number	5250.000   0	TSL Permittivity	37.1
Group   UID	CW   0--	TSL Conductivity [S/m]	4.59
Conversion Factor	5.19	Phantom Section   TSL	Flat   HSL

## Hardware Setup

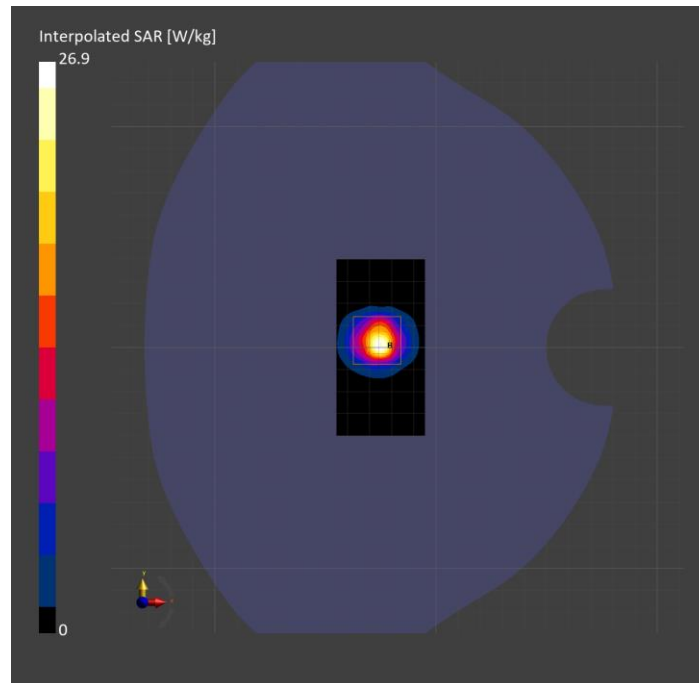
Probe   Calibration Date	EX3DV4 - SN3772   2024-02-07	Phantom	Twin-SAM V8.0 (30deg probe tilt)
DAE   Calibration Date	DAE4 Sn1258   2024-03-12	TSL Type	HBBL-600-10000
Software Version	16.2.4.2524		

## Scans Setup

	Area Scan	Zoom Scan
Grid Extents [mm]	40.0 x 80.0	22.0 x 22.0 x 22.0
Grid Steps [mm]	10.0 x 10.0	4.0 x 4.0 x 1.4
Sensor Surface [mm]	3.0	1.4
Graded Grid	N/A	Yes
M2/M1 [%]		64.8
Dist 3dB Peak [mm]		7.2

## Measurement Results

	Area Scan	Zoom Scan
psSAR1g [W/Kg]	6.22	7.04
psSAR10g [W/Kg]	1.83	2.03
Power Drift [dB]	N/A	-0.08



# System Performance Check Report for D5GHzV2 - SN1168

## Exposure Conditions

Frequency [MHz]   Channel Number	5750.000   0	TSL Permittivity	36.1
Group   UID	CW   0--	TSL Conductivity [S/m]	5.18
Conversion Factor	4.63	Phantom Section   TSL	Flat   HSL

## Hardware Setup

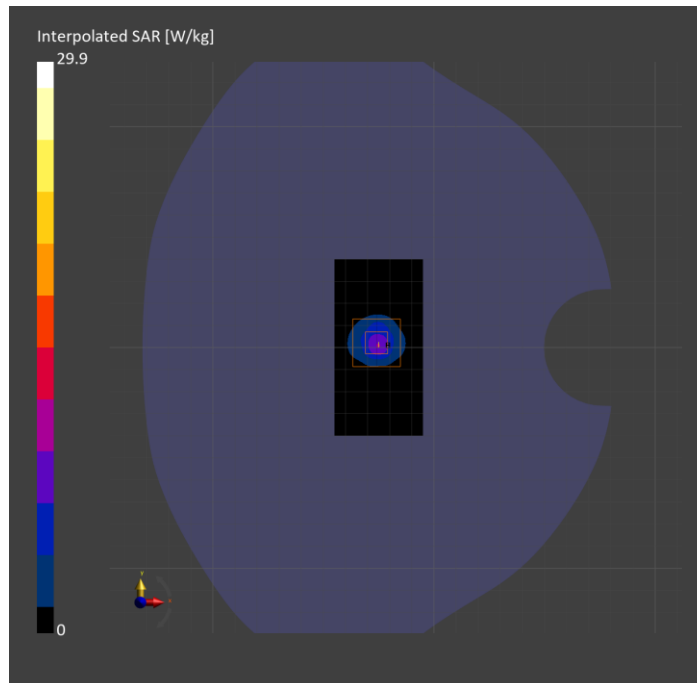
Probe   Calibration Date	EX3DV4 - SN3772   2024-02-07	Phantom	Twin-SAM V8.0 (30deg probe tilt)
DAE   Calibration Date	DAE4 Sn1258   2024-03-12	TSL Type	HBBL-600-10000
Software Version	16.2.4.2524		

## Scans Setup

	Area Scan	Zoom Scan
Grid Extents [mm]	40.0 x 80.0	22.0 x 22.0 x 22.0
Grid Steps [mm]	10.0 x 10.0	4.0 x 4.0 x 1.4
Sensor Surface [mm]	3.0	1.4
Graded Grid	N/A	Yes
M2/M1 [%]		61.9
Dist 3dB Peak [mm]		7.2

## Measurement Results

	Area Scan	Zoom Scan
psSAR1g [W/Kg]	6.52	7.23
psSAR10g [W/Kg]	1.89	2.07
Power Drift [dB]	N/A	-0.08



# System Performance Check Report for D2450V2 - SN706

## Exposure Conditions

Frequency [MHz]   Channel Number	2450.000   0	TSL Permittivity	40.4
Group   UID	CW   0--	TSL Conductivity [S/m]	1.72
Conversion Factor	7.18	Phantom Section   TSL	Flat   HSL

## Hardware Setup

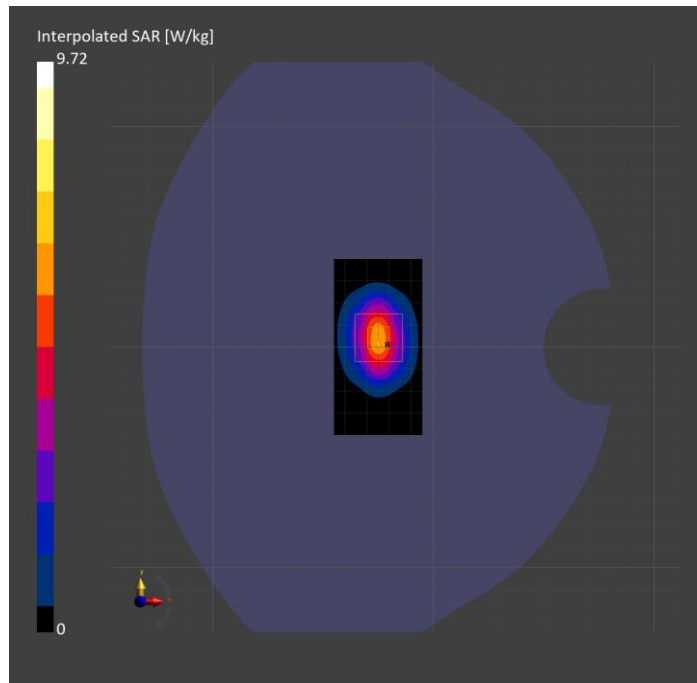
Probe   Calibration Date	EX3DV4 - SN3772   2024-02-07	Phantom	Twin-SAM V8.0 (30deg probe tilt)
DAE   Calibration Date	DAE4 Sn1258   2024-03-12	TSL Type	HBBL-600-10000
Software Version	16.2.4.2524		

## Scans Setup

	Area Scan	Zoom Scan
Grid Extents [mm]	40.0 x 80.0	30.0 x 30.0 x 30.0
Grid Steps [mm]	10.0 x 10.0	5.0 x 5.0 x 1.5
Sensor Surface [mm]	3.0	1.4
Graded Grid	N/A	Yes
M2/M1 [%]		81.0
Dist 3dB Peak [mm]		9.0

## Measurement Results

	Area Scan	Zoom Scan
psSAR1g [W/Kg]	4.85	<b>4.86</b>
psSAR10g [W/Kg]	2.23	<b>2.30</b>
Power Drift [dB]	N/A	0.00





# System Performance Check Report for D5GHzV2 - SN1003

## Exposure Conditions

Frequency [MHz]   Channel Number	5200.000   0	TSL Permittivity	35.4
Group   UID	CW   0--	TSL Conductivity [S/m]	4.73
Conversion Factor	5.4	Phantom Section   TSL	Flat   HSL

## Hardware Setup

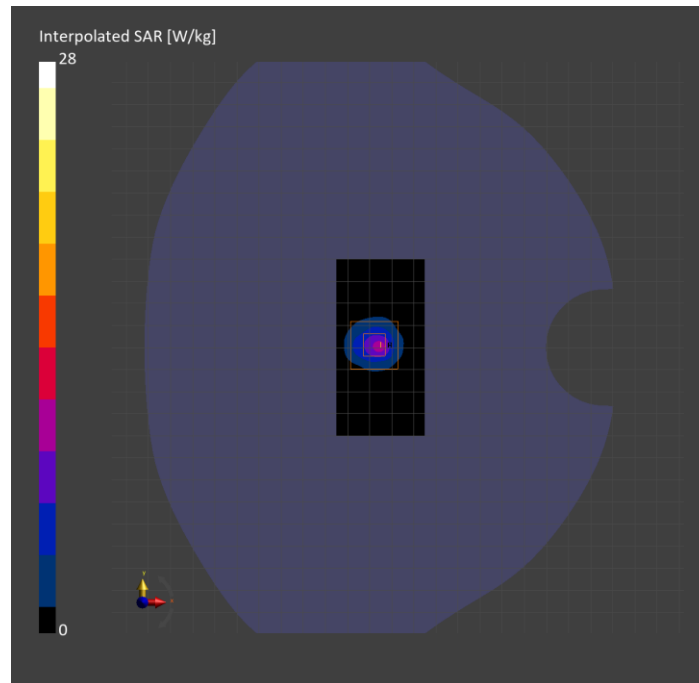
Probe   Calibration Date	EX3DV4 - SN7498   2024-03-12	Phantom	Twin-SAM V8.0 (30deg probe tilt)
DAE   Calibration Date	DAE4 Sn1796   2024-05-02	TSL Type	HBBL-600-10000
Software Version	16.2.4.2524		

## Scans Setup

	Area Scan	Zoom Scan
Grid Extents [mm]	40.0 x 80.0	22.0 x 22.0 x 22.0
Grid Steps [mm]	10.0 x 10.0	4.0 x 4.0 x 1.4
Sensor Surface [mm]	3.0	1.4
Graded Grid	N/A	Yes
M2/M1 [%]		64.8
Dist 3dB Peak [mm]		7.2

## Measurement Results

	Area Scan	Zoom Scan
psSAR1g [W/Kg]	6.68	7.35
psSAR10g [W/Kg]	1.98	2.11
Power Drift [dB]	0.00	-0.05



# System Performance Check Report for D5GHzV2 - SN1138

## Exposure Conditions

Frequency [MHz]   Channel Number	5250.000   0	TSL Permittivity	35.2
Group   UID	CW   0--	TSL Conductivity [S/m]	4.48
Conversion Factor	5.4	Phantom Section   TSL	Flat   HSL

## Hardware Setup

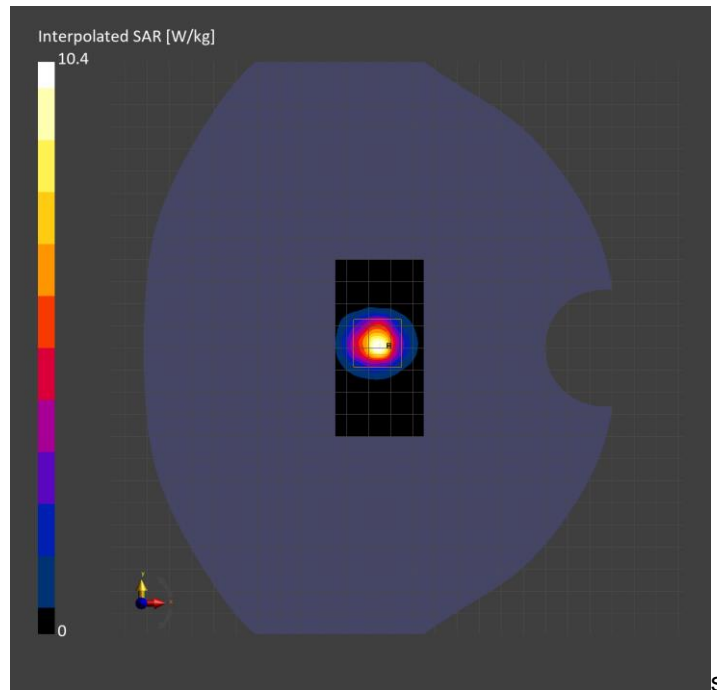
Probe   Calibration Date	EX3DV4 - SN7498   2024-03-12	Phantom	Twin-SAM V8.0 (30deg probe tilt)
DAE   Calibration Date	DAE4 Sn1796   2024-05-02	TSL Type	HBBL-600-10000
Software Version	16.2.4.2524		

## Scans Setup

	Area Scan	Zoom Scan
Grid Extents [mm]	40.0 x 80.0	22.0 x 22.0 x 22.0
Grid Steps [mm]	10.0 x 10.0	4.0 x 4.0 x 1.4
Sensor Surface [mm]	3.0	1.4
Graded Grid	N/A	Yes
M2/M1 [%]		65.0
Dist 3dB Peak [mm]		7.2

## Measurement Results

	Area Scan	Zoom Scan
psSAR1g [W/Kg]	6.73	7.32
psSAR10g [W/Kg]	1.98	2.11
Power Drift [dB]	-0.02	-0.03



# System Performance Check Report for D5GHzV2 - SN1003

## Exposure Conditions

Frequency [MHz]   Channel Number	5750.000   0	TSL Permittivity	34.1
Group   UID	CW   0--	TSL Conductivity [S/m]	4.95
Conversion Factor	4.51	Phantom Section   TSL	Flat   HSL

## Hardware Setup

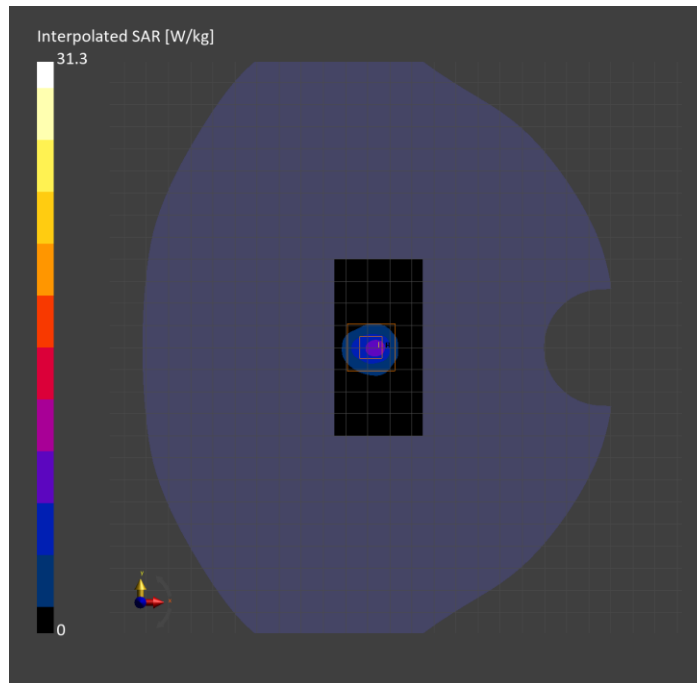
Probe   Calibration Date	EX3DV4 - SN7820   2024-05-10	Phantom	Twin-SAM V8.0 (30deg probe tilt)
DAE   Calibration Date	DAE4 Sn1544   2024-01-16	TSL Type	HBBL-600-10000
Software Version	16.2.4.2524		

## Scans Setup

	Area Scan	Zoom Scan
Grid Extents [mm]	40.0 x 80.0	22.0 x 22.0 x 22.0
Grid Steps [mm]	10.0 x 10.0	4.0 x 4.0 x 1.4
Sensor Surface [mm]	3.0	1.4
Graded Grid	N/A	Yes
M2/M1 [%]		58.1
Dist 3dB Peak [mm]		7.2

## Measurement Results

	Area Scan	Zoom Scan
psSAR1g [W/Kg]	6.36	7.29
psSAR10g [W/Kg]	1.91	2.08
Power Drift [dB]	N/A	-0.04



# System Performance Check Report for D5GHzV2 - SN1168

## Exposure Conditions

Frequency [MHz]   Channel Number	5750.000   0	TSL Permittivity	35.8
Group   UID	CW   0--	TSL Conductivity [S/m]	5.11
Conversion Factor	4.51	Phantom Section   TSL	Flat   HSL

## Hardware Setup

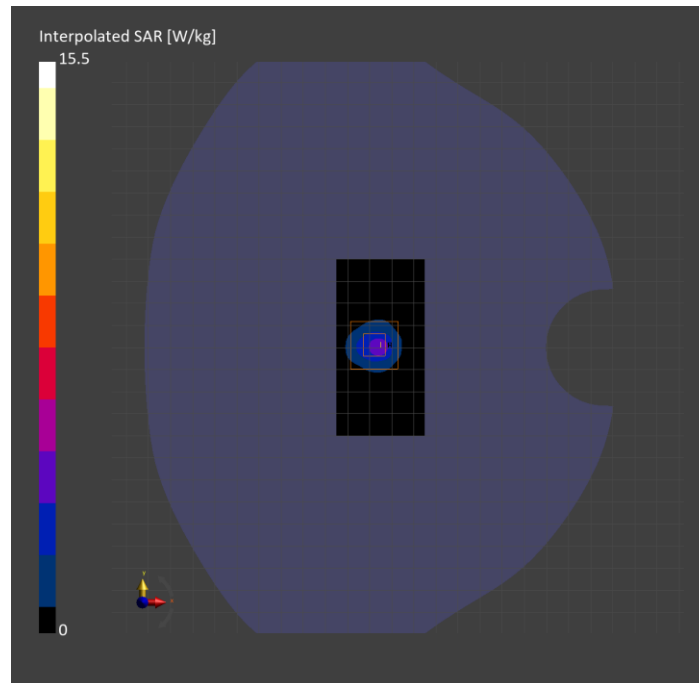
Probe   Calibration Date	EX3DV4 - SN7820   2024-05-10	Phantom	Twin-SAM V8.0 (30deg probe tilt)
DAE   Calibration Date	DAE4 Sn1544   2024-01-16	TSL Type	HBBL-600-10000
Software Version	16.2.4.2524		

## Scans Setup

	Area Scan	Zoom Scan
Grid Extents [mm]	40.0 x 80.0	22.0 x 22.0 x 22.0
Grid Steps [mm]	10.0 x 10.0	4.0 x 4.0 x 1.4
Sensor Surface [mm]	3.0	1.4
Graded Grid	N/A	Yes
M2/M1 [%]		58.9
Dist 3dB Peak [mm]		7.2

## Measurement Results

	Area Scan	Zoom Scan
psSAR1g [W/Kg]	3.18	3.61
psSAR10g [W/Kg]	0.933	1.04
Power Drift [dB]	N/A	-0.08



# System Performance Check Report for D2450V2 - SN706

## Exposure Conditions

Frequency [MHz]   Channel Number	2450.000   0	TSL Permittivity	39.8
Group   UID	CW   0--	TSL Conductivity [S/m]	1.80
Conversion Factor	6.96	Phantom Section   TSL	Flat   HSL

## Hardware Setup

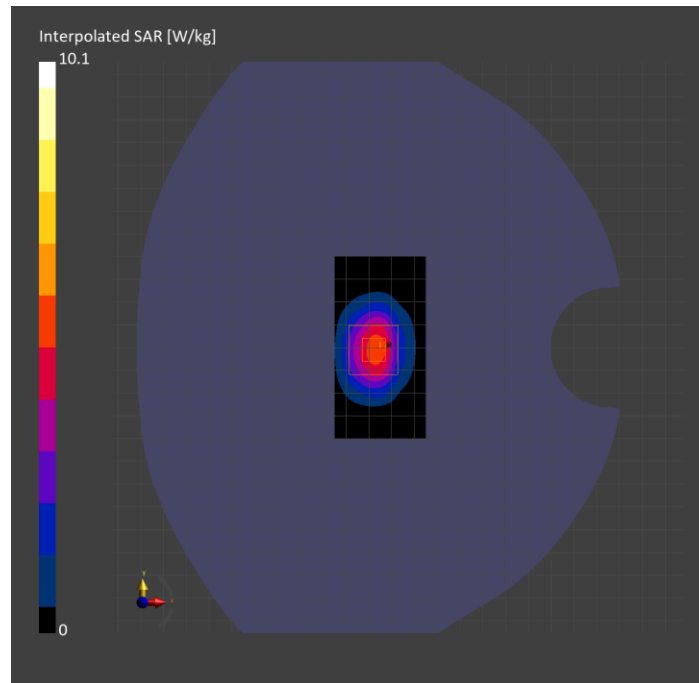
Probe   Calibration Date	EX3DV4 - SN7820   2024-05-10	Phantom	Twin-SAM V8.0 (30deg probe tilt)
DAE   Calibration Date	DAE4 Sn1544   2024-01-16	TSL Type	HBBL-600-10000
Software Version	16.2.4.2524		

## Scans Setup

	Area Scan	Zoom Scan
Grid Extents [mm]	40.0 x 80.0	30.0 x 30.0 x 30.0
Grid Steps [mm]	10.0 x 10.0	5.0 x 5.0 x 1.5
Sensor Surface [mm]	3.0	1.4
Graded Grid	N/A	Yes
M2/M1 [%]		78.3
Dist 3dB Peak [mm]		9.0

## Measurement Results

	Area Scan	Zoom Scan
psSAR1g [W/Kg]	4.45	<b>4.78</b>
psSAR10g [W/Kg]	2.10	<b>2.23</b>
Power Drift [dB]	-0.04	0.02



# System Performance Check Report for D5GHzV2 - SN1003

## Exposure Conditions

Frequency [MHz]   Channel Number	5250.000   0	TSL Permittivity	35.2
Group   UID	CW   0--	TSL Conductivity [S/m]	4.53
Conversion Factor	5.17	Phantom Section   TSL	Flat   HSL

## Hardware Setup

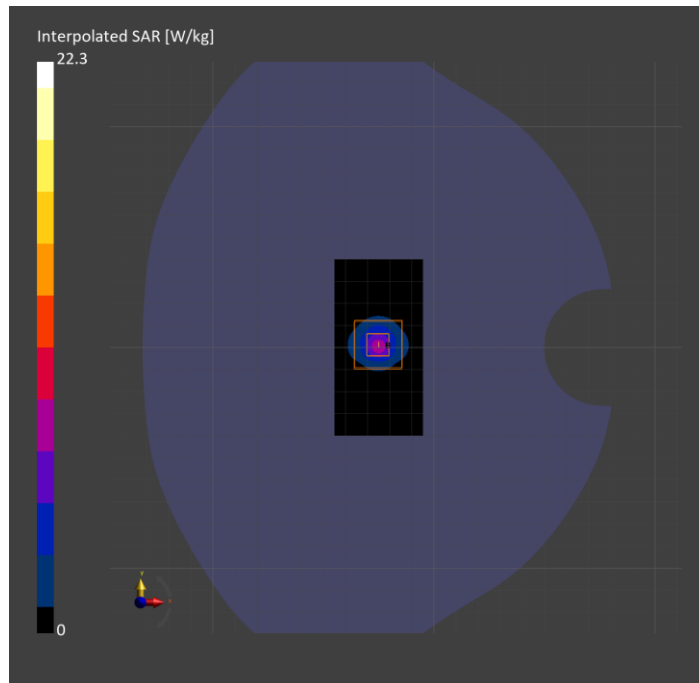
Probe   Calibration Date	EX3DV4 - SN7779   2024-05-10	Phantom	Twin-SAM V8.0 (30deg probe tilt)
DAE   Calibration Date	DAE4 Sn1439   2024-04-24	TSL Type	HBBL-600-10000
Software Version	16.2.4.2524		

## Scans Setup

	Area Scan	Zoom Scan
Grid Extents [mm]	40.0 x 80.0	22.0 x 22.0 x 22.0
Grid Steps [mm]	10.0 x 10.0	4.0 x 4.0 x 1.4
Sensor Surface [mm]	3.0	1.4
Graded Grid	N/A	Yes
M2/M1 [%]		65.3
Dist 3dB Peak [mm]		7.2

## Measurement Results

	Area Scan	Zoom Scan
psSAR1g [W/Kg]	5.34	5.87
psSAR10g [W/Kg]	1.54	1.69
Power Drift [dB]	N/A	0.06



# System Performance Check Report for D2450V2 - SN706

## Exposure Conditions

Frequency [MHz]   Channel Number	2450.000   0	TSL Permittivity	39.3
Group   UID	CW   0--	TSL Conductivity [S/m]	1.80
Conversion Factor	6.96	Phantom Section   TSL	Flat   HSL

## Hardware Setup

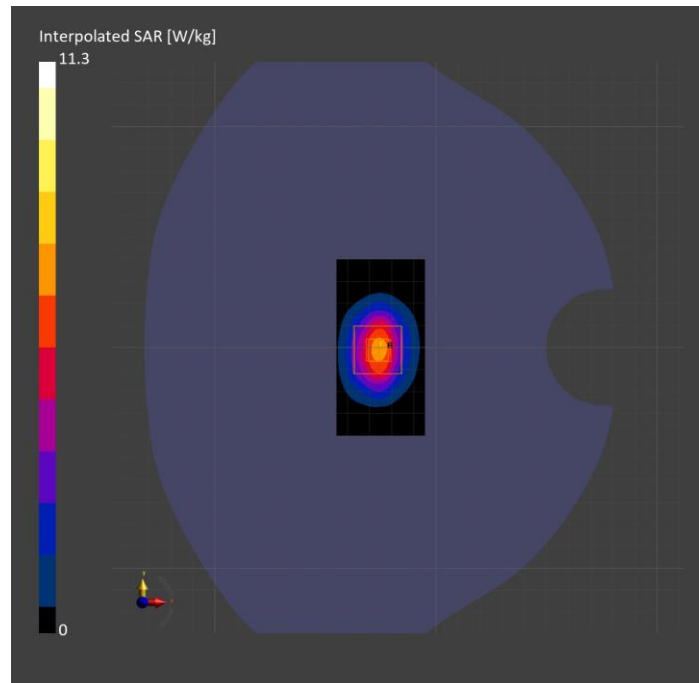
Probe   Calibration Date	EX3DV4 - SN7779   2024-05-10	Phantom	Twin-SAM V8.0 (30deg probe tilt)
DAE   Calibration Date	DAE4 Sn1439   2024-04-24	TSL Type	HBBL-600-10000
Software Version	16.2.4.2524		

## Scans Setup

	Area Scan	Zoom Scan
Grid Extents [mm]	40.0 x 80.0	30.0 x 30.0 x 30.0
Grid Steps [mm]	10.0 x 10.0	5.0 x 5.0 x 1.5
Sensor Surface [mm]	3.0	1.4
Graded Grid	N/A	Yes
M2/M1 [%]		80.9
Dist 3dB Peak [mm]		9.0

## Measurement Results

	Area Scan	Zoom Scan
psSAR1g [W/Kg]	5.59	5.65
psSAR10g [W/Kg]	2.59	2.66
Power Drift [dB]	N/A	0.00



# System Performance Check Report for D2450V2 - SN706

## Exposure Conditions

Frequency [MHz]   Channel Number	2450.000   0	TSL Permittivity	39.8
Group   UID	CW   0--	TSL Conductivity [S/m]	1.77
Conversion Factor	7.49	Phantom Section   TSL	Flat   HSL

## Hardware Setup

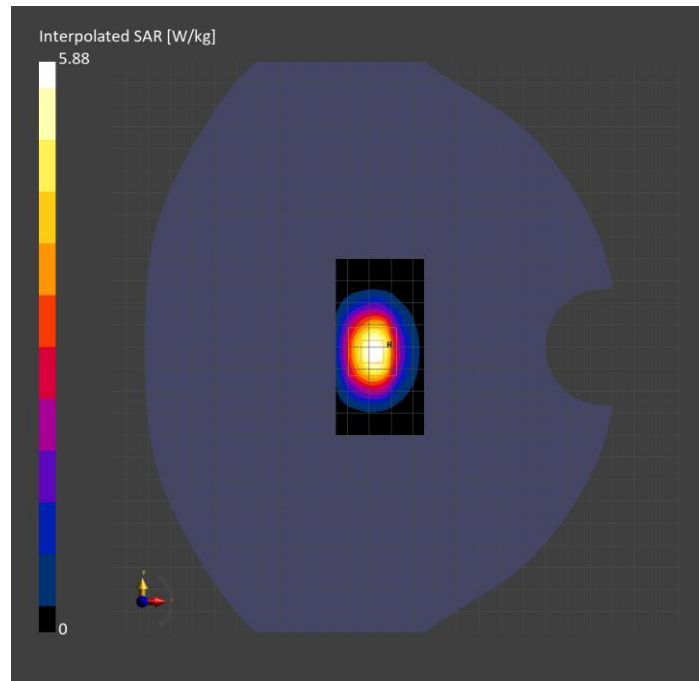
Probe   Calibration Date	EX3DV4 - SN7587   2024-04-15	Phantom	Twin-SAM V8.0 (30deg probe tilt)
DAE   Calibration Date	DAE4 Sn1797   2024-05-02	TSL Type	HBBL-600-10000
Software Version	16.2.4.2524		

## Scans Setup

	Area Scan	Zoom Scan
Grid Extents [mm]	40.0 x 80.0	30.0 x 30.0 x 30.0
Grid Steps [mm]	10.0 x 10.0	5.0 x 5.0 x 1.5
Sensor Surface [mm]	3.0	1.4
Graded Grid	N/A	Yes
M2/M1 [%]		79.1
Dist 3dB Peak [mm]		9.0

## Measurement Results

	Area Scan	Zoom Scan
psSAR1g [W/Kg]	4.59	<b>4.74</b>
psSAR10g [W/Kg]	2.19	<b>2.21</b>
Power Drift [dB]	N/A	-0.02





# System Performance Check Report for D5GHzV2 - SN1168

## Exposure Conditions

Frequency [MHz]   Channel Number	5750.000   0	TSL Permittivity	33.9
Group   UID	CW   0--	TSL Conductivity [S/m]	5.01
Conversion Factor	5.23	Phantom Section   TSL	Flat   HSL

## Hardware Setup

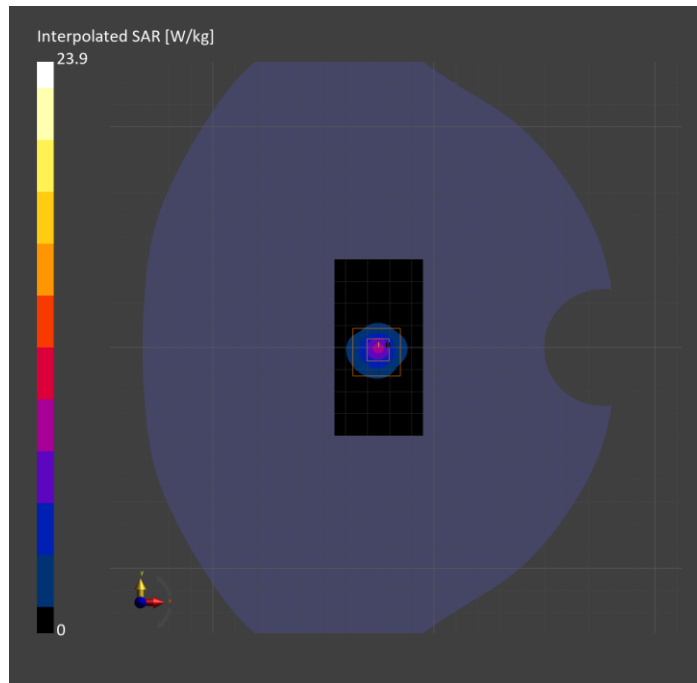
Probe   Calibration Date	EX3DV4 - SN7501   2024-03-14	Phantom	Twin-SAM V8.0 (30deg probe tilt)
DAE   Calibration Date	DAE4 Sn1357   2024-01-09	TSL Type	HBBL-600-10000
Software Version	16.2.4.2524		

## Scans Setup

	Area Scan	Zoom Scan
Grid Extents [mm]	40.0 x 80.0	22.0 x 22.0 x 22.0
Grid Steps [mm]	10.0 x 10.0	4.0 x 4.0 x 1.4
Sensor Surface [mm]	3.0	1.4
Graded Grid	N/A	Yes
M2/M1 [%]		62.5
Dist 3dB Peak [mm]		7.2

## Measurement Results

	Area Scan	Zoom Scan
psSAR1g [W/Kg]	5.49	5.93
psSAR10g [W/Kg]	1.58	1.73
Power Drift [dB]	N/A	0.06



# System Performance Check Report for D5GHzV2 - SN1003

## Exposure Conditions

Frequency [MHz]   Channel Number	5750.000   0	TSL Permittivity	33.7
Group   UID	CW   0--	TSL Conductivity [S/m]	5.04
Conversion Factor	5.23	Phantom Section   TSL	Flat   HSL

## Hardware Setup

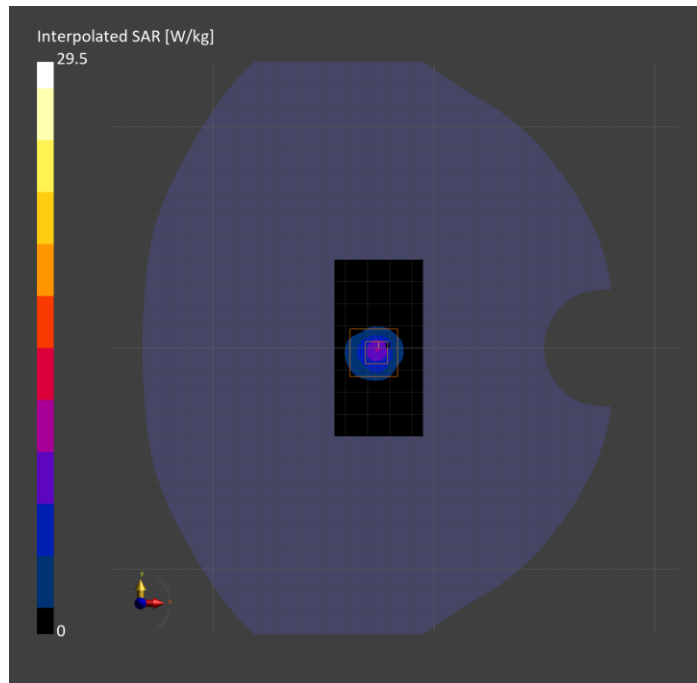
Probe   Calibration Date	EX3DV4 - SN7501   2024-03-14	Phantom	Twin-SAM V8.0 (30deg probe tilt)
DAE   Calibration Date	DAE4 Sn1357   2024-01-09	TSL Type	HBBL-600-10000
Software Version	16.2.4.2524		

## Scans Setup

	Area Scan	Zoom Scan
Grid Extents [mm]	40.0 x 80.0	22.0 x 22.0 x 22.0
Grid Steps [mm]	10.0 x 10.0	4.0 x 4.0 x 1.4
Sensor Surface [mm]	3.0	1.4
Graded Grid	N/A	Yes
M2/M1 [%]		61.1
Dist 3dB Peak [mm]		7.6

## Measurement Results

	Area Scan	Zoom Scan
psSAR1g [W/Kg]	6.49	7.22
psSAR10g [W/Kg]	1.93	2.12
Power Drift [dB]	N/A	0.05



# System Performance Check Report for D5GHzV2 - SN1003

## Exposure Conditions

Frequency [MHz]   Channel Number	5600.000   0	TSL Permittivity	34.9
Group   UID	CW   0--	TSL Conductivity [S/m]	4.91
Conversion Factor	4.96	Phantom Section   TSL	Flat   HSL

## Hardware Setup

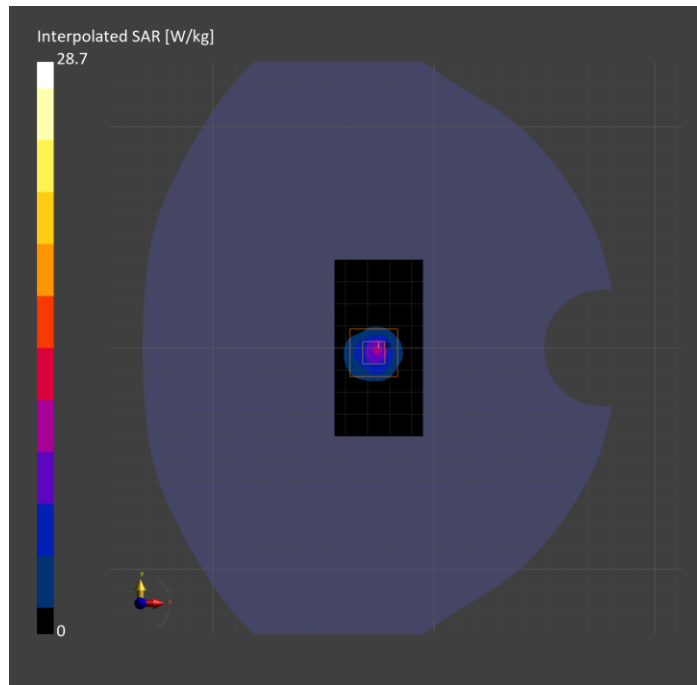
Probe   Calibration Date	EX3DV4 - SN7501   2024-03-14	Phantom	Twin-SAM V8.0 (30deg probe tilt)
DAE   Calibration Date	DAE4 Sn1357   2024-01-09	TSL Type	HBBL-600-10000
Software Version	16.2.4.2524		

## Scans Setup

	Area Scan	Zoom Scan
Grid Extents [mm]	40.0 x 80.0	22.0 x 22.0 x 22.0
Grid Steps [mm]	10.0 x 10.0	4.0 x 4.0 x 1.4
Sensor Surface [mm]	3.0	1.4
Graded Grid	N/A	Yes
M2/M1 [%]		63.4
Dist 3dB Peak [mm]		7.6

## Measurement Results

	Area Scan	Zoom Scan
psSAR1g [W/Kg]	6.65	7.49
psSAR10g [W/Kg]	1.98	2.20
Power Drift [dB]	N/A	0.03



# System Performance Check Report for D5GHzV2 - SN1168

## Exposure Conditions

Frequency [MHz]   Channel Number	5250.000   0	TSL Permittivity	37.7
Group   UID	CW   0--	TSL Conductivity [S/m]	4.83
Conversion Factor	5.75	Phantom Section   TSL	Flat   HSL

## Hardware Setup

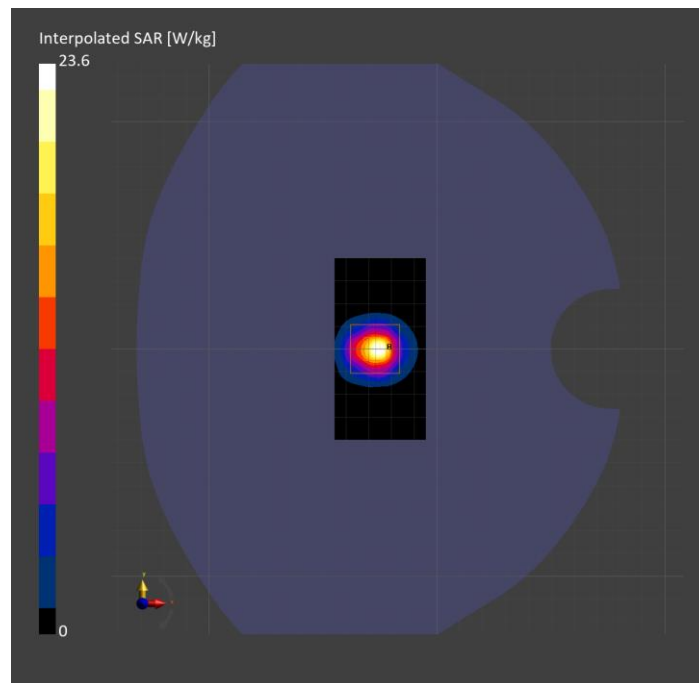
Probe   Calibration Date	EX3DV4 - SN7810   2024-05-08	Phantom	Twin-SAM V8.0 (30deg probe tilt)
DAE   Calibration Date	DAE4 Sn1787   2024-05-02	TSL Type	HBBL-600-10000
Software Version	16.2.4.2524		

## Scans Setup

	Area Scan	Zoom Scan
Grid Extents [mm]	40.0 x 80.0	22.0 x 22.0 x 22.0
Grid Steps [mm]	10.0 x 10.0	4.0 x 4.0 x 1.4
Sensor Surface [mm]	3.0	1.4
Graded Grid	N/A	Yes
M2/M1 [%]		62.5
Dist 3dB Peak [mm]		7.2

## Measurement Results

	Area Scan	Zoom Scan
psSAR1g [W/Kg]	5.32	5.77
psSAR10g [W/Kg]	1.55	1.65
Power Drift [dB]	N/A	-0.03



# System Performance Check Report for D5GHzV2 - SN1003

## Exposure Conditions

Frequency [MHz]   Channel Number	5250.000   0	TSL Permittivity	35.5
Group   UID	CW   0--	TSL Conductivity [S/m]	4.61
Conversion Factor	5.75	Phantom Section   TSL	Flat   HSL

## Hardware Setup

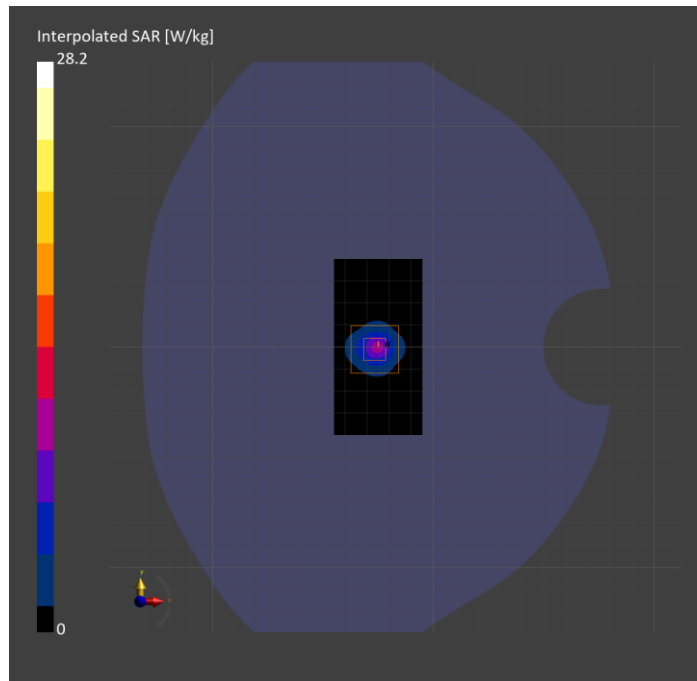
Probe   Calibration Date	EX3DV4 - SN7810   2024-05-08	Phantom	Twin-SAM V8.0 (30deg probe tilt)
DAE   Calibration Date	DAE4 Sn1787   2024-05-02	TSL Type	HBBL-600-10000
Software Version	16.2.4.2524		

## Scans Setup

	Area Scan	Zoom Scan
Grid Extents [mm]	40.0 x 80.0	22.0 x 22.0 x 22.0
Grid Steps [mm]	10.0 x 10.0	4.0 x 4.0 x 1.4
Sensor Surface [mm]	3.0	1.4
Graded Grid	N/A	Yes
M2/M1 [%]		63.2
Dist 3dB Peak [mm]		7.4

## Measurement Results

	Area Scan	Zoom Scan
psSAR1g [W/Kg]	6.48	7.25
psSAR10g [W/Kg]	1.87	2.10
Power Drift [dB]	N/A	0.05



# System Performance Check Report for D5GHzV2 - SN1003

## Exposure Conditions

Frequency [MHz]   Channel Number	5750.000   0	TSL Permittivity	33.8
Group   UID	CW   0--	TSL Conductivity [S/m]	4.91
Conversion Factor	5.2	Phantom Section   TSL	Flat   HSL

## Hardware Setup

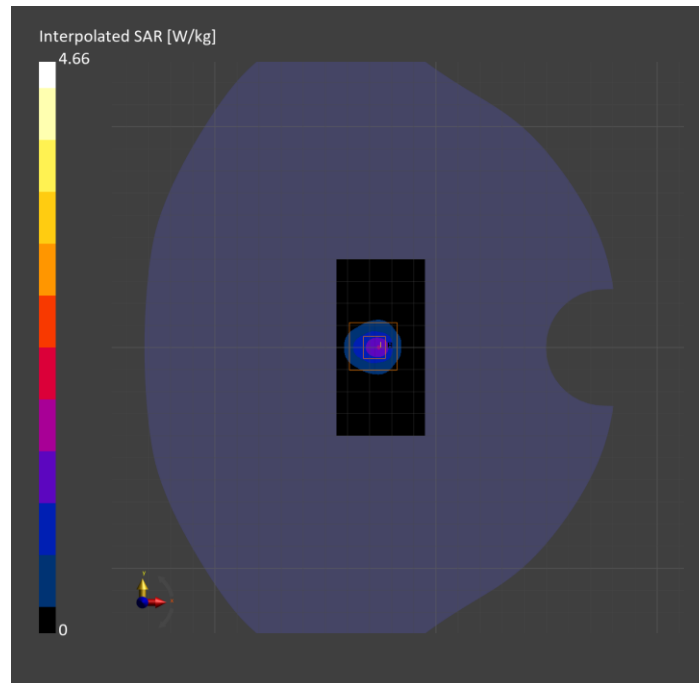
Probe   Calibration Date	EX3DV4 - SN3902   2024-03-12	Phantom	Twin-SAM V5.0 (30deg probe tilt)
DAE   Calibration Date	DAE4 Sn1799   2023-04-04	TSL Type	HBBL4-250V3
Software Version	16.2.4.2524		

## Scans Setup

	Area Scan	Zoom Scan
Grid Extents [mm]	40.0 x 80.0	22.0 x 22.0 x 22.0
Grid Steps [mm]	10.0 x 10.0	4.0 x 4.0 x 1.4
Sensor Surface [mm]	3.0	1.4
Graded Grid	N/A	Yes
M2/M1 [%]		62.7
Dist 3dB Peak [mm]		7.4

## Measurement Results

	Area Scan	Zoom Scan
psSAR1g [W/Kg]	1.02	1.14
psSAR10g [W/Kg]	0.301	0.324
Power Drift [dB]	N/A	-0.07



# System Performance Check Report for D5GHzV2 - SN1138

## Exposure Conditions

Frequency [MHz]   Channel Number	5600.000   0	TSL Permittivity	33.8
Group   UID	CW   0--	TSL Conductivity [S/m]	4.77
Conversion Factor	4.93	Phantom Section   TSL	Flat   HSL

## Hardware Setup

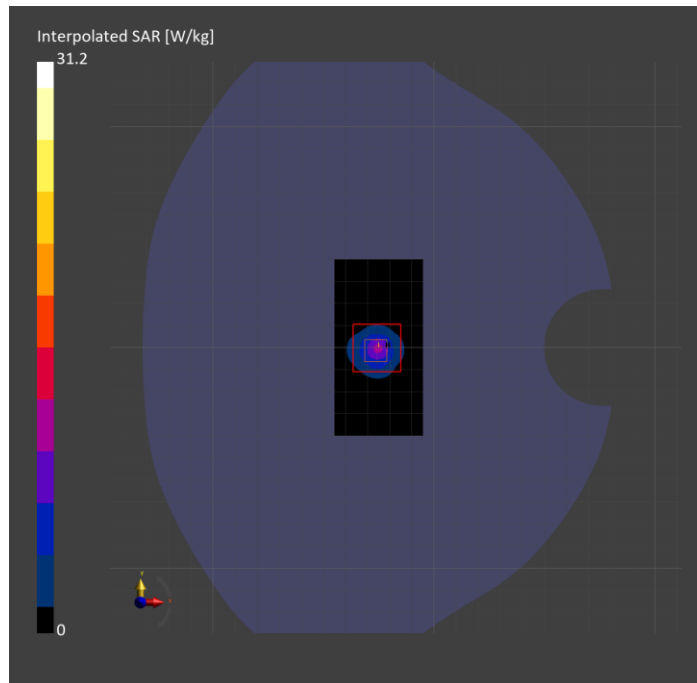
Probe   Calibration Date	EX3DV4 - SN3902   2024-03-12	Phantom	Twin-SAM V5.0 (30deg probe tilt)
DAE   Calibration Date	DAE4 Sn1799   2023-04-04	TSL Type	HBBL-600-10000
Software Version	16.2.4.2524		

## Scans Setup

	Area Scan	Zoom Scan
Grid Extents [mm]	40.0 x 80.0	22.0 x 22.0 x 22.0
Grid Steps [mm]	10.0 x 10.0	4.0 x 4.0 x 1.4
Sensor Surface [mm]	3.0	1.4
Graded Grid	N/A	Yes
M2/M1 [%]		61.9
Dist 3dB Peak [mm]		7.4

## Measurement Results

	Area Scan	Zoom Scan
psSAR1g [W/Kg]	6.96	7.62
psSAR10g [W/Kg]	1.98	2.15
Power Drift [dB]	0.05	0.06



# System Performance Check Report for D5GHzV2 - SN1003

## Exposure Conditions

Frequency [MHz]   Channel Number	5600.000   0	TSL Permittivity	33.4
Group   UID	CW   0--	TSL Conductivity [S/m]	4.83
Conversion Factor	4.93	Phantom Section   TSL	Flat   HSL

## Hardware Setup

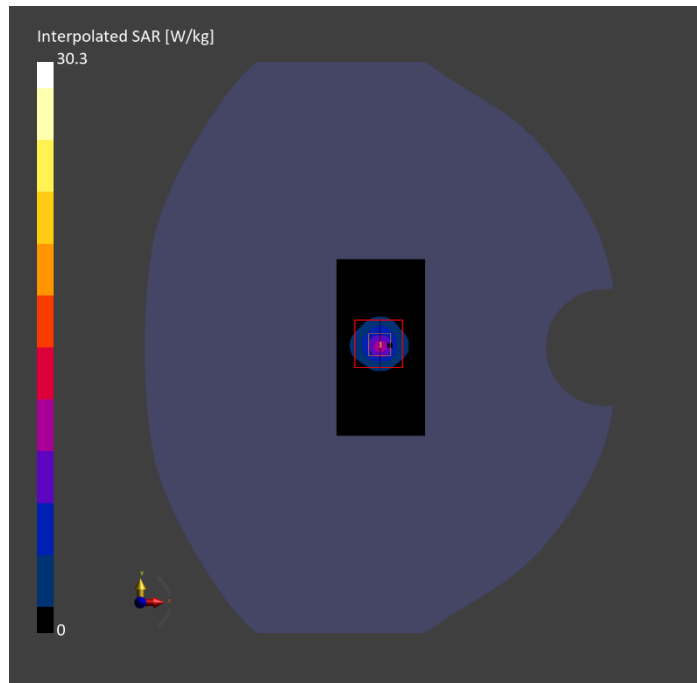
Probe   Calibration Date	EX3DV4 - SN3902   2024-03-12	Phantom	Twin-SAM V5.0 (30deg probe tilt)
DAE   Calibration Date	DAE4 Sn1799   2023-04-04	TSL Type	HBBL-600-10000
Software Version	16.2.4.2524		

## Scans Setup

	Area Scan	Zoom Scan
Grid Extents [mm]	40.0 x 80.0	22.0 x 22.0 x 22.0
Grid Steps [mm]	10.0 x 10.0	4.0 x 4.0 x 1.4
Sensor Surface [mm]	3.0	1.4
Graded Grid	N/A	Yes
M2/M1 [%]		63.2
Dist 3dB Peak [mm]		7.2

## Measurement Results

	Area Scan	Zoom Scan
psSAR1g [W/Kg]	7.07	7.60
psSAR10g [W/Kg]	1.99	2.17
Power Drift [dB]	0.00	-0.03





# System Performance Check Report for D5GHzV2 - SN1003

## Exposure Conditions

Frequency [MHz]   Channel Number	5250.000   0	TSL Permittivity	34.6
Group   UID	CW   0--	TSL Conductivity [S/m]	4.47
Conversion Factor	5.09	Phantom Section   TSL	Flat   HSL

## Hardware Setup

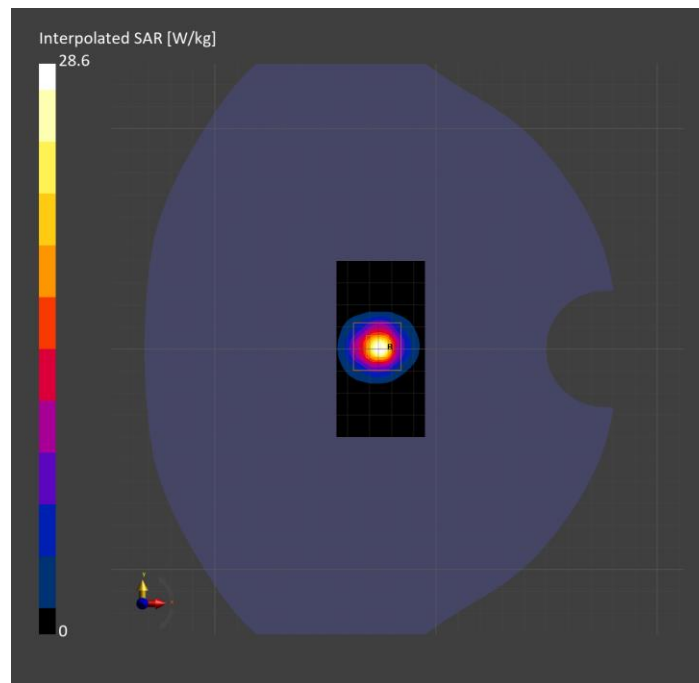
Probe   Calibration Date	EX3DV4 - SN7463   2024-04-15	Phantom	Twin-SAM V5.0 (30deg probe tilt)
DAE   Calibration Date	DAE4 Sn1548   2024-02-08	TSL Type	HBBL-600-10000
Software Version	16.2.4.2524		

## Scans Setup

	Area Scan	Zoom Scan
Grid Extents [mm]	40.0 x 80.0	22.0 x 22.0 x 22.0
Grid Steps [mm]	10.0 x 10.0	4.0 x 4.0 x 1.4
Sensor Surface [mm]	3.0	1.4
Graded Grid	N/A	Yes
M2/M1 [%]		64.8
Dist 3dB Peak [mm]		7.2

## Measurement Results

	Area Scan	Zoom Scan
psSAR1g [W/Kg]	6.81	7.31
psSAR10g [W/Kg]	1.95	2.13
Power Drift [dB]	N/A	0.02



# System Performance Check Report for D5GHzV2 - SN1138

## Exposure Conditions

Frequency [MHz]   Channel Number	5750.000   0	TSL Permittivity	33.2
Group   UID	CW   0--	TSL Conductivity [S/m]	5.05
Conversion Factor	4.64	Phantom Section   TSL	Flat   HSL

## Hardware Setup

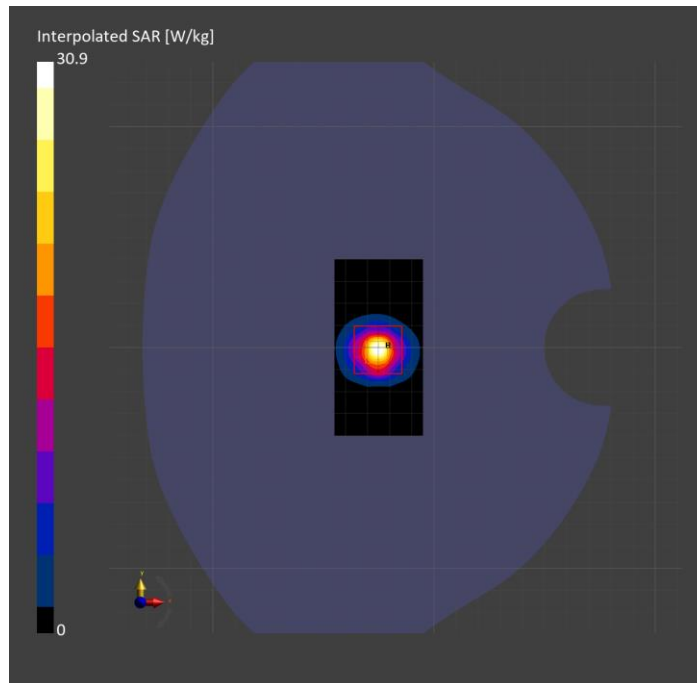
Probe   Calibration Date	EX3DV4 - SN7463   2024-04-15	Phantom	Twin-SAM V5.0 (30deg probe tilt)
DAE   Calibration Date	DAE4 Sn1548   2024-02-08	TSL Type	HBBL-600-10000
Software Version	16.2.4.2524		

## Scans Setup

	Area Scan	Zoom Scan
Grid Extents [mm]	40.0 x 80.0	22.0 x 22.0 x 22.0
Grid Steps [mm]	10.0 x 10.0	4.0 x 4.0 x 1.4
Sensor Surface [mm]	3.0	1.4
Graded Grid	N/A	Yes
M2/M1 [%]		60.9
Dist 3dB Peak [mm]		7.3

## Measurement Results

	Area Scan	Zoom Scan
psSAR1g [W/Kg]	6.67	7.17
psSAR10g [W/Kg]	1.91	2.07
Power Drift [dB]	N/A	0.00



# System Performance Check Report for D2450V2 - SN748

## Exposure Conditions

Frequency [MHz]   Channel Number	2450.000   0	TSL Permittivity	38.2
Group   UID	CW   0--	TSL Conductivity [S/m]	1.73
Conversion Factor	7.92	Phantom Section   TSL	Flat   HSL

## Hardware Setup

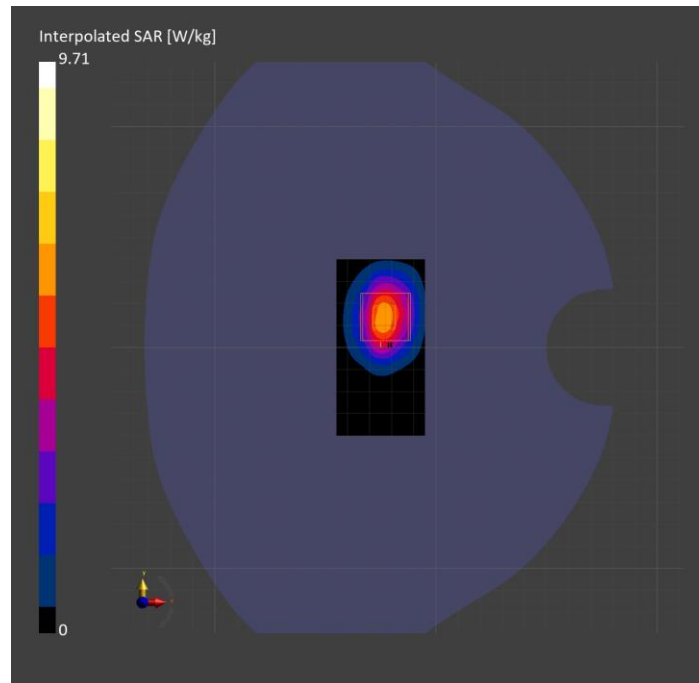
Probe   Calibration Date	EX3DV4 - SN3989   2024-01-09	Phantom	Twin-SAM V8.0 (30deg probe tilt)
DAE   Calibration Date	DAE4 Sn1433   2024-02-08	TSL Type	HBBL-600-10000
Software Version	16.2.4.2524		

## Scans Setup

	Area Scan	Zoom Scan
Grid Extents [mm]	40.0 x 80.0	30.0 x 30.0 x 30.0
Grid Steps [mm]	10.0 x 10.0	5.0 x 5.0 x 1.5
Sensor Surface [mm]	3.0	1.4
Graded Grid	N/A	Yes
M2/M1 [%]		81.4
Dist 3dB Peak [mm]		9.0

## Measurement Results

	Area Scan	Zoom Scan
psSAR1g [W/Kg]	4.93	<b>4.88</b>
psSAR10g [W/Kg]	2.33	<b>2.32</b>
Power Drift [dB]	-0.11	-0.05



# System Performance Check Report for D1640V2 - SN324

## Exposure Conditions

Frequency [MHz]   Channel Number	1640.000   0	TSL Permittivity	41.5
Group   UID	CW   0--	TSL Conductivity [S/m]	1.30
Conversion Factor	8.51	Phantom Section   TSL	Flat   HSL

## Hardware Setup

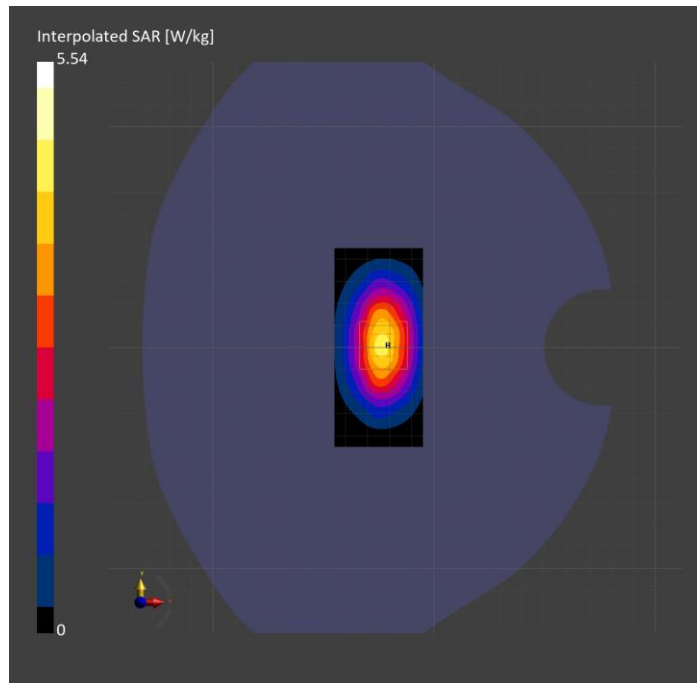
Probe   Calibration Date	EX3DV4 - SN3989   2024-01-09	Phantom	Twin-SAM V8.0 (30deg probe tilt)
DAE   Calibration Date	DAE4 Sn1433   2024-02-08	TSL Type	HBBL-600-10000
Software Version	16.2.4.2524		

## Scans Setup

	Area Scan	Zoom Scan
Grid Extents [mm]	40.0 x 90.0	30.0 x 30.0 x 30.0
Grid Steps [mm]	10.0 x 15.0	6.0 x 6.0 x 1.5
Sensor Surface [mm]	3.0	1.4
Graded Grid	N/A	Yes
M2/M1 [%]		89.3
Dist 3dB Peak [mm]		10.8

## Measurement Results

	Area Scan	Zoom Scan
psSAR1g [W/Kg]	3.59	<b>3.53</b>
psSAR10g [W/Kg]	1.98	<b>1.99</b>
Power Drift [dB]	-0.03	0.00



# System Performance Check Report for D3500V2 - SN1011

## Exposure Conditions

Frequency [MHz]   Channel Number	3500.000   0	TSL Permittivity	40.6
Group   UID	CW   0--	TSL Conductivity [S/m]	2.68
Conversion Factor	6.86	Phantom Section   TSL	Flat   HSL

## Hardware Setup

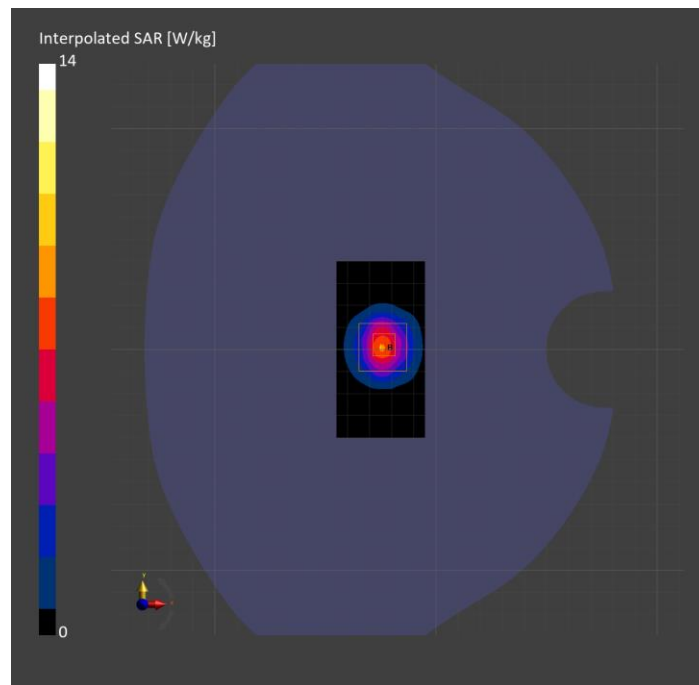
Probe   Calibration Date	EX3DV4 - SN3989   2024-01-09	Phantom	Twin-SAM V8.0 (30deg probe tilt)
DAE   Calibration Date	DAE4 Sn1433   2024-02-08	TSL Type	HBBL-600-10000
Software Version	16.2.4.2524		

## Scans Setup

	Area Scan	Zoom Scan
Grid Extents [mm]	40.0 x 80.0	28.0 x 28.0 x 28.0
Grid Steps [mm]	10.0 x 10.0	5.0 x 5.0 x 1.4
Sensor Surface [mm]	3.0	1.4
Graded Grid	N/A	Yes
M2/M1 [%]		79.1
Dist 3dB Peak [mm]		8.6

## Measurement Results

	Area Scan	Zoom Scan
psSAR1g [W/Kg]	5.90	<b>5.96</b>
psSAR10g [W/Kg]	2.29	<b>2.35</b>
Power Drift [dB]	0.02	0.02



# System Performance Check Report for D3900V2 - SN1102

## Exposure Conditions

Frequency [MHz]   Channel Number	3900.000   0	TSL Permittivity	40.0
Group   UID	CW   0--	TSL Conductivity [S/m]	3.06
Conversion Factor	7.06	Phantom Section   TSL	Flat   HSL

## Hardware Setup

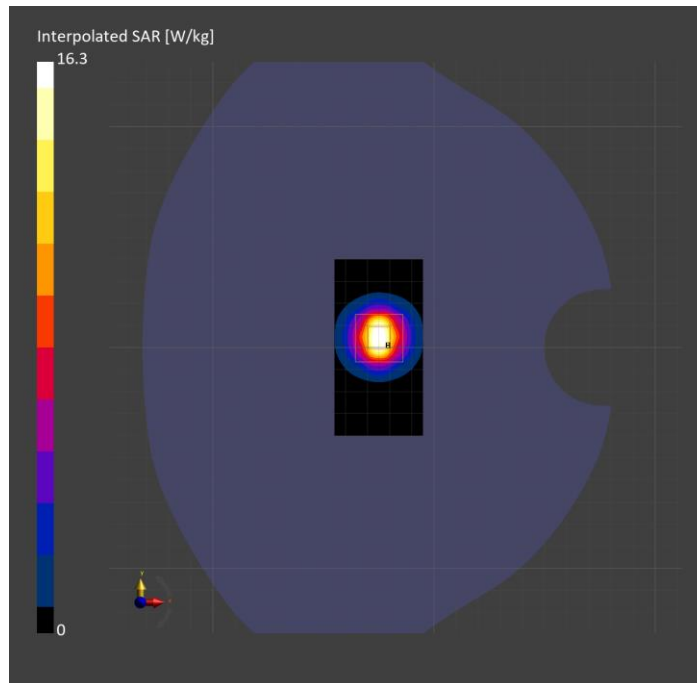
Probe   Calibration Date	EX3DV4 - SN3989   2024-01-09	Phantom	Twin-SAM V8.0 (30deg probe tilt)
DAE   Calibration Date	DAE4 Sn1433   2024-02-08	TSL Type	HBBL-600-10000
Software Version	16.2.4.2524		

## Scans Setup

	Area Scan	Zoom Scan
Grid Extents [mm]	40.0 x 80.0	28.0 x 28.0 x 28.0
Grid Steps [mm]	10.0 x 10.0	5.0 x 5.0 x 1.4
Sensor Surface [mm]	3.0	1.4
Graded Grid	N/A	Yes
M2/M1 [%]		76.6
Dist 3dB Peak [mm]		8.0

## Measurement Results

	Area Scan	Zoom Scan
psSAR1g [W/Kg]	6.08	<b>6.28</b>
psSAR10g [W/Kg]	2.17	<b>2.26</b>
Power Drift [dB]	0.01	0.01



# System Performance Check Report for D1750V2 - SN1053

## Exposure Conditions

Frequency [MHz]   Channel Number	1750.000   0	TSL Permittivity	40.2
Group   UID	CW   0--	TSL Conductivity [S/m]	1.30
Conversion Factor	8.98	Phantom Section   TSL	Flat   HSL

## Hardware Setup

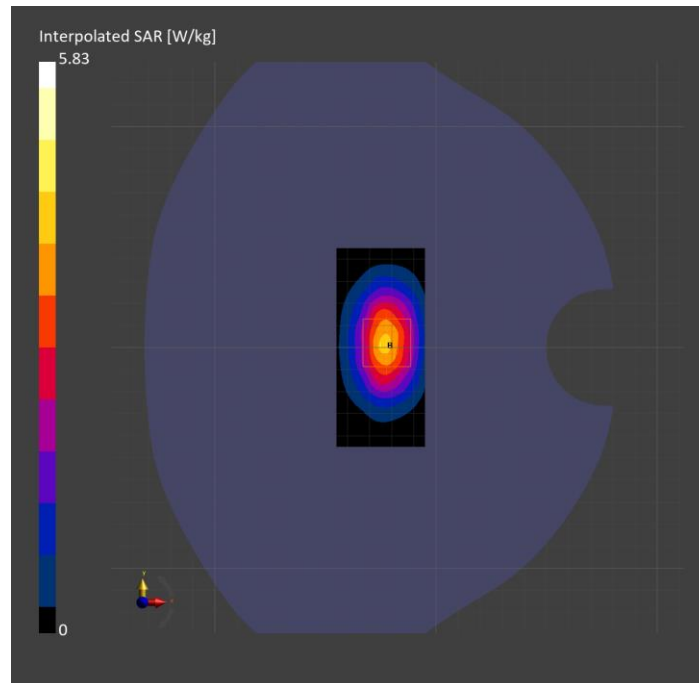
Probe   Calibration Date	EX3DV4 - SN3989   2024-01-09	Phantom	Twin-SAM V8.0 (30deg probe tilt)
DAE   Calibration Date	DAE4 Sn1433   2024-02-08	TSL Type	HBBL-600-10000
Software Version	16.2.4.2524		

## Scans Setup

	Area Scan	Zoom Scan
Grid Extents [mm]	40.0 x 90.0	30.0 x 30.0 x 30.0
Grid Steps [mm]	10.0 x 15.0	6.0 x 6.0 x 1.5
Sensor Surface [mm]	3.0	1.4
Graded Grid	N/A	Yes
M2/M1 [%]		84.7
Dist 3dB Peak [mm]		10.8

## Measurement Results

	Area Scan	Zoom Scan
psSAR1g [W/Kg]	3.29	<b>3.31</b>
psSAR10g [W/Kg]	1.79	<b>1.80</b>
Power Drift [dB]	-0.00	0.00



# System Performance Check Report for D1900V2 - SN5d140

## Exposure Conditions

Frequency [MHz]   Channel Number	1900.000   0	TSL Permittivity	39.2
Group   UID	CW   0--	TSL Conductivity [S/m]	1.42
Conversion Factor	7.98	Phantom Section   TSL	Flat   HSL

## Hardware Setup

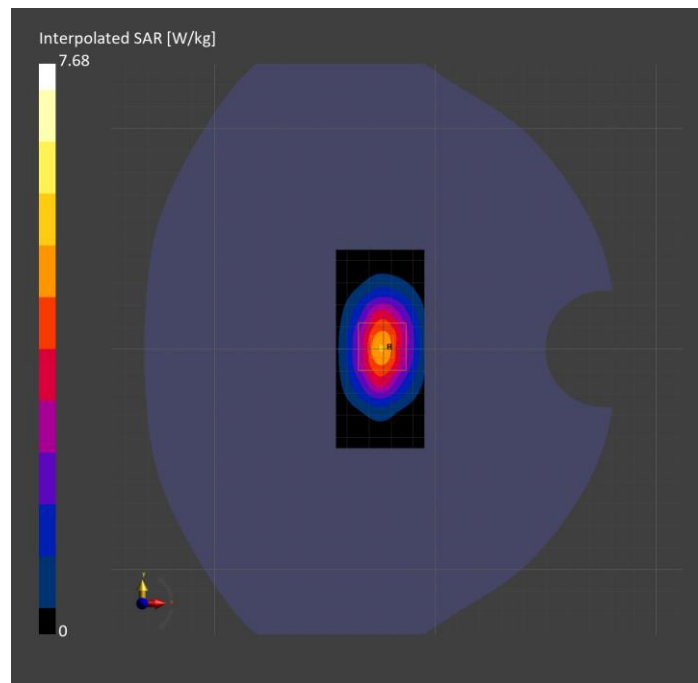
Probe   Calibration Date	EX3DV4 - SN7569   2024-04-15	Phantom	Twin-SAM V5.0 (30deg probe tilt)
DAE   Calibration Date	DAE4 Sn1545   2024-02-09	TSL Type	HBBL-600-10000
Software Version	16.2.4.2524		

## Scans Setup

	Area Scan	Zoom Scan
Grid Extents [mm]	40.0 x 90.0	30.0 x 30.0 x 30.0
Grid Steps [mm]	10.0 x 15.0	6.0 x 6.0 x 1.5
Sensor Surface [mm]	3.0	1.4
Graded Grid	N/A	Yes
M2/M1 [%]		83.4
Dist 3dB Peak [mm]		9.6

## Measurement Results

	Area Scan	Zoom Scan
psSAR1g [W/Kg]	4.09	<b>4.16</b>
psSAR10g [W/Kg]	2.13	<b>2.20</b>
Power Drift [dB]	N/A	0.01





# System Performance Check Report for D2600V2 - SN1006

## Exposure Conditions

Frequency [MHz]   Channel Number	2600.000   0	TSL Permittivity	40.1
Group   UID	CW   0--	TSL Conductivity [S/m]	1.85
Conversion Factor	7.31	Phantom Section   TSL	Flat   HSL

## Hardware Setup

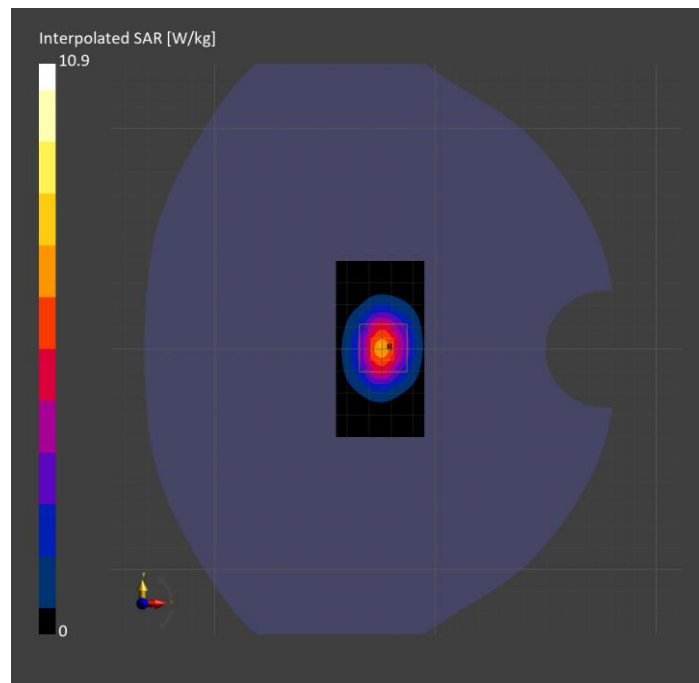
Probe   Calibration Date	EX3DV4 - SN7569   2024-04-15	Phantom	Twin-SAM V5.0 (30deg probe tilt)
DAE   Calibration Date	DAE4 Sn1545   2024-02-09	TSL Type	HBBL-600-10000
Software Version	16.2.4.2524		

## Scans Setup

	Area Scan	Zoom Scan
Grid Extents [mm]	40.0 x 80.0	30.0 x 30.0 x 30.0
Grid Steps [mm]	10.0 x 10.0	5.0 x 5.0 x 1.5
Sensor Surface [mm]	3.0	1.4
Graded Grid	N/A	Yes
M2/M1 [%]		80.0
Dist 3dB Peak [mm]		9.0

## Measurement Results

	Area Scan	Zoom Scan
psSAR1g [W/Kg]	5.22	5.27
psSAR10g [W/Kg]	2.34	2.42
Power Drift [dB]	N/A	-0.00



# System Performance Check Report for D1750V2 - SN1053

## Exposure Conditions

Frequency [MHz]   Channel Number	1750.000   0	TSL Permittivity	40.9
Group   UID	CW   0--	TSL Conductivity [S/m]	1.28
Conversion Factor	8.49	Phantom Section   TSL	Flat   HSL

## Hardware Setup

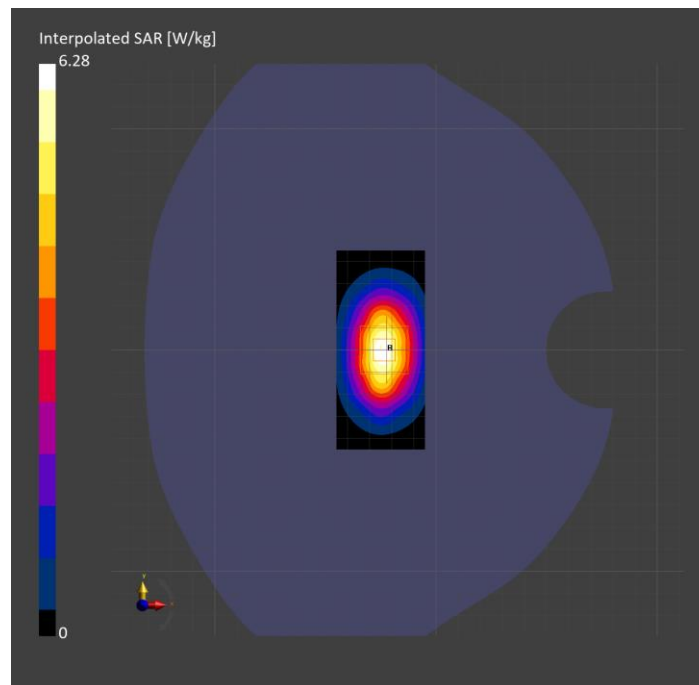
Probe   Calibration Date	EX3DV4 - SN7569   2024-04-15	Phantom	Twin-SAM V5.0 (30deg probe tilt)
DAE   Calibration Date	DAE4 Sn1545   2024-02-09	TSL Type	HBBL-600-10000
Software Version	16.2.4.2524		

## Scans Setup

	Area Scan	Zoom Scan
Grid Extents [mm]	40.0 x 90.0	30.0 x 30.0 x 30.0
Grid Steps [mm]	10.0 x 15.0	6.0 x 6.0 x 1.5
Sensor Surface [mm]	3.0	1.4
Graded Grid	N/A	Yes
M2/M1 [%]		79.6
Dist 3dB Peak [mm]		9.6

## Measurement Results

	Area Scan	Zoom Scan
psSAR1g [W/Kg]	3.18	3.30
psSAR10g [W/Kg]	1.71	1.76
Power Drift [dB]	N/A	-0.09



# System Performance Check Report for D750V3 - SN1019

## Exposure Conditions

Frequency [MHz]   Channel Number	750.000   0	TSL Permittivity	42.0
Group   UID	CW   0--	TSL Conductivity [S/m]	0.906
Conversion Factor	9.63	Phantom Section   TSL	Flat   HSL

## Hardware Setup

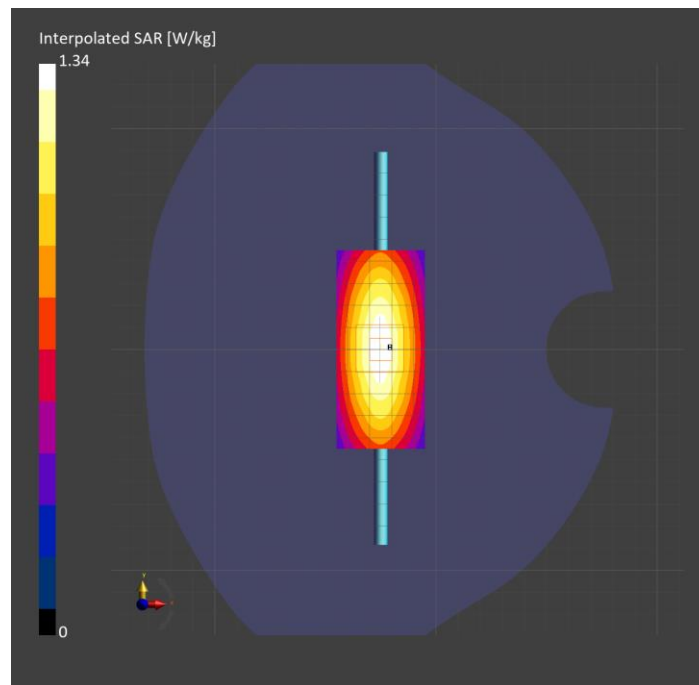
Probe   Calibration Date	EX3DV4 - SN7589   2024-04-15	Phantom	Twin-SAM V8.0 (30deg probe tilt)
DAE   Calibration Date	DAE4 Sn1798   2024-05-22	TSL Type	HBBL-600-10000
Software Version	16.2.4.2524		

## Scans Setup

	Area Scan	Zoom Scan
Grid Extents [mm]	40.0 x 90.0	30.0 x 30.0 x 30.0
Grid Steps [mm]	10.0 x 15.0	6.0 x 6.0 x 1.5
Sensor Surface [mm]	3.0	1.4
Graded Grid	N/A	Yes
M2/M1 [%]		88.7
Dist 3dB Peak [mm]		> 15.0

## Measurement Results

	Area Scan	Zoom Scan
psSAR1g [W/Kg]	0.946	<b>0.910</b>
psSAR10g [W/Kg]	0.630	<b>0.602</b>
Power Drift [dB]	N/A	-0.13



# System Performance Check Report for D835V2 - SN4d117

## Exposure Conditions

Frequency [MHz]   Channel Number	835.000   0	TSL Permittivity	41.8
Group   UID	CW   0--	TSL Conductivity [S/m]	0.942
Conversion Factor	9.5	Phantom Section   TSL	Flat   HSL

## Hardware Setup

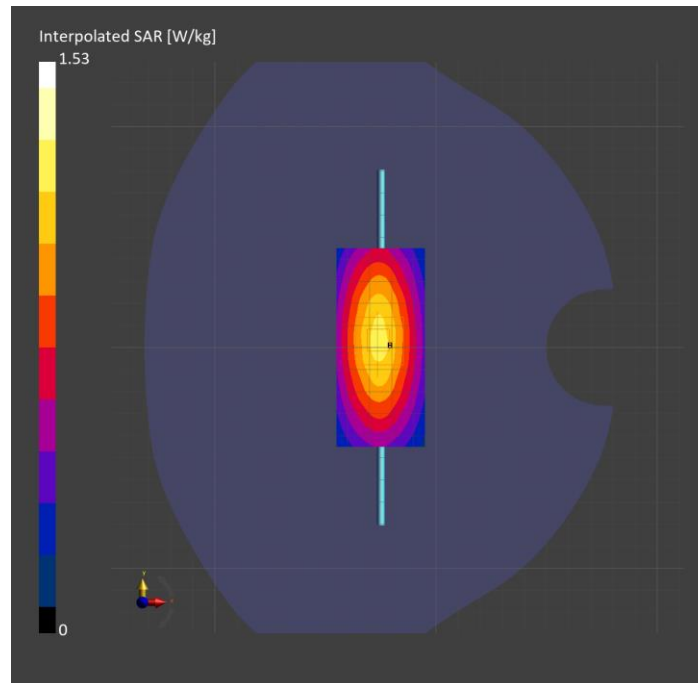
Probe   Calibration Date	EX3DV4 - SN7589   2024-04-15	Phantom	Twin-SAM V8.0 (30deg probe tilt)
DAE   Calibration Date	DAE4 Sn1798   2024-05-22	TSL Type	HBBL-600-10000
Software Version	16.2.4.2524		

## Scans Setup

	Area Scan	Zoom Scan
Grid Extents [mm]	40.0 x 90.0	30.0 x 30.0 x 30.0
Grid Steps [mm]	10.0 x 15.0	6.0 x 6.0 x 1.5
Sensor Surface [mm]	3.0	1.4
Graded Grid	N/A	Yes
M2/M1 [%]		89.2
Dist 3dB Peak [mm]		22.2

## Measurement Results

	Area Scan	Zoom Scan
psSAR1g [W/Kg]	1.04	<b>1.04</b>
psSAR10g [W/Kg]	0.685	<b>0.682</b>
Power Drift [dB]	N/A	0.00



# System Performance Check Report for D1750V2 - SN1053

## Exposure Conditions

Frequency [MHz]   Channel Number	1750.000   0	TSL Permittivity	38.0
Group   UID	CW   0--	TSL Conductivity [S/m]	1.36
Conversion Factor	8.37	Phantom Section   TSL	Flat   HSL

## Hardware Setup

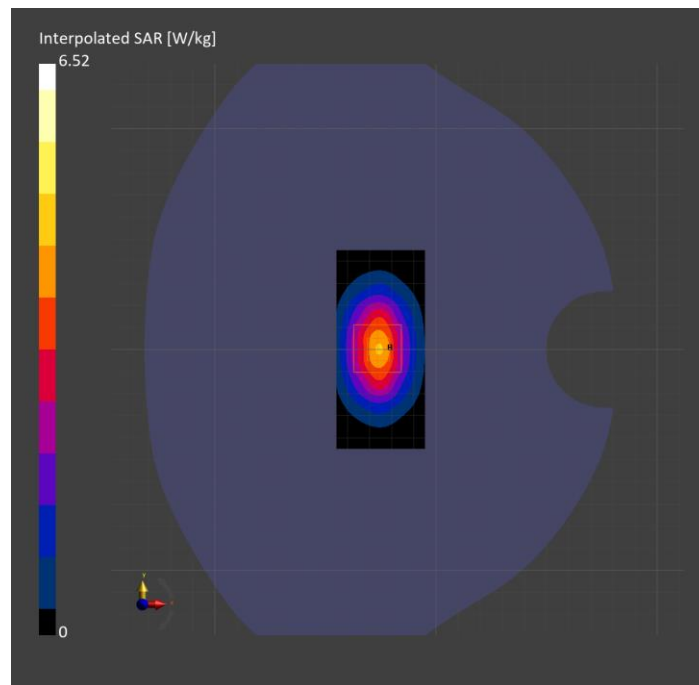
Probe   Calibration Date	EX3DV4 - SN7589   2024-04-15	Phantom	Twin-SAM V8.0 (30deg probe tilt)
DAE   Calibration Date	DAE4 Sn1798   2024-05-22	TSL Type	HBBL-600-10000
Software Version	16.2.4.2524		

## Scans Setup

	Area Scan	Zoom Scan
Grid Extents [mm]	40.0 x 90.0	30.0 x 30.0 x 30.0
Grid Steps [mm]	10.0 x 15.0	6.0 x 6.0 x 1.5
Sensor Surface [mm]	3.0	1.4
Graded Grid	N/A	Yes
M2/M1 [%]		82.8
Dist 3dB Peak [mm]		10.8

## Measurement Results

	Area Scan	Zoom Scan
psSAR1g [W/Kg]	3.55	3.55
psSAR10g [W/Kg]	1.91	1.89
Power Drift [dB]	N/A	-0.02



# System Performance Check Report for D750V3 - SN1019

## Exposure Conditions

Frequency [MHz]   Channel Number	750.000   0	TSL Permittivity	40.9
Group   UID	CW   0--	TSL Conductivity [S/m]	0.859
Conversion Factor	9.27	Phantom Section   TSL	Flat   HSL

## Hardware Setup

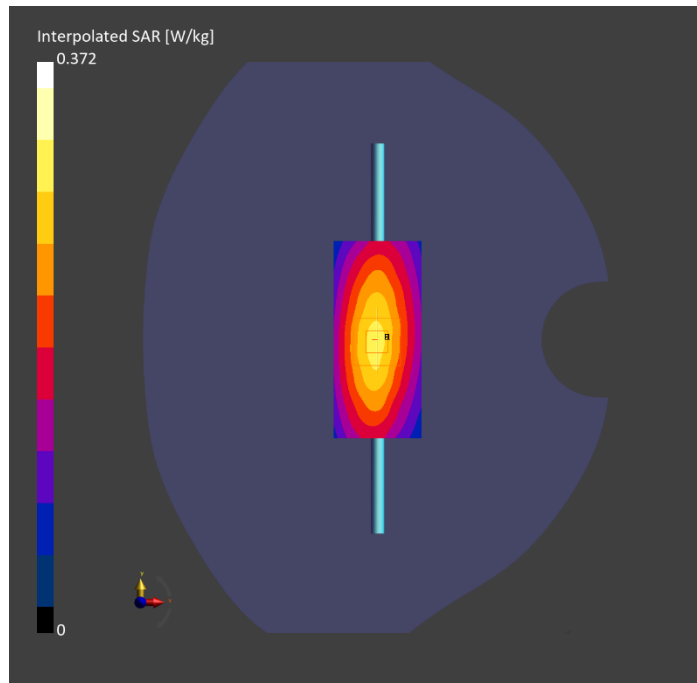
Probe   Calibration Date	EX3DV4 - SN7482   2024-04-15	Phantom	Twin-SAM V5.0 (30deg probe tilt)
DAE   Calibration Date	DAE4 Sn1239   2024-03-06	TSL Type	HBBL-600-10000
Software Version	16.2.4.2524		

## Scans Setup

	Area Scan	Zoom Scan
Grid Extents [mm]	40.0 x 90.0	30.0 x 30.0 x 30.0
Grid Steps [mm]	10.0 x 15.0	6.0 x 6.0 x 1.5
Sensor Surface [mm]	3.0	1.4
Graded Grid	N/A	Yes
M2/M1 [%]		88.9
Dist 3dB Peak [mm]		17.8

## Measurement Results

	Area Scan	Zoom Scan
psSAR1g [W/Kg]	0.254	<b>0.254</b>
psSAR10g [W/Kg]	0.170	<b>0.172</b>
Power Drift [dB]	N/A	-0.01



# System Performance Check Report for D835V2 - SN4d117

## Exposure Conditions

Frequency [MHz]   Channel Number	835.000   0	TSL Permittivity	43.0
Group   UID	CW   0--	TSL Conductivity [S/m]	0.933
Conversion Factor	8.63	Phantom Section   TSL	Flat   HSL

## Hardware Setup

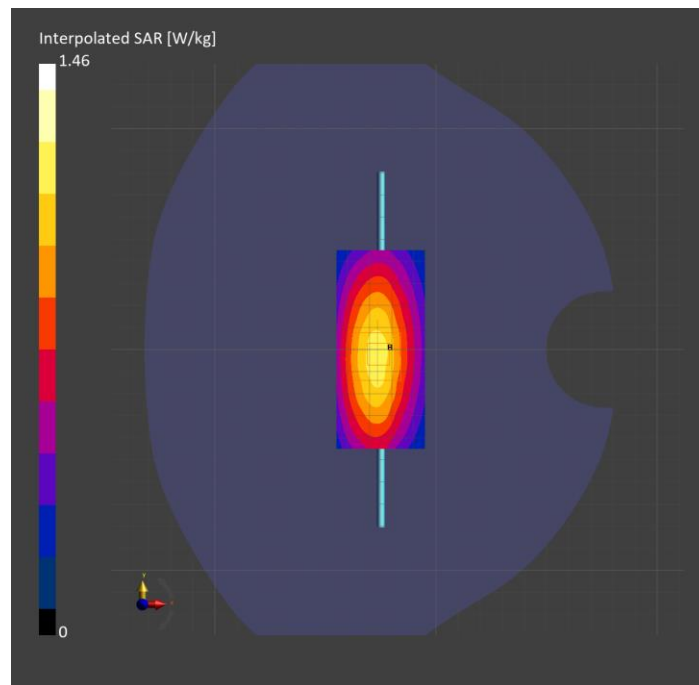
Probe   Calibration Date	EX3DV4 - SN7482   2024-04-15	Phantom	Twin-SAM V5.0 (30deg probe tilt)
DAE   Calibration Date	DAE4 Sn1239   2024-03-06	TSL Type	HBBL-600-10000
Software Version	16.2.4.2524		

## Scans Setup

	Area Scan	Zoom Scan
Grid Extents [mm]	40.0 x 90.0	30.0 x 30.0 x 30.0
Grid Steps [mm]	10.0 x 15.0	6.0 x 6.0 x 1.5
Sensor Surface [mm]	3.0	1.4
Graded Grid	N/A	Yes
M2/M1 [%]		90.0
Dist 3dB Peak [mm]		18.8

## Measurement Results

	Area Scan	Zoom Scan
psSAR1g [W/Kg]	1.02	<b>1.01</b>
psSAR10g [W/Kg]	0.670	<b>0.680</b>
Power Drift [dB]	N/A	0.01



# System Performance Check Report for D1750V2 - SN1053

## Exposure Conditions

Frequency [MHz]   Channel Number	1750.000   0	TSL Permittivity	41.4
Group   UID	CW   0--	TSL Conductivity [S/m]	1.28
Conversion Factor	7.84	Phantom Section   TSL	Flat   HSL

## Hardware Setup

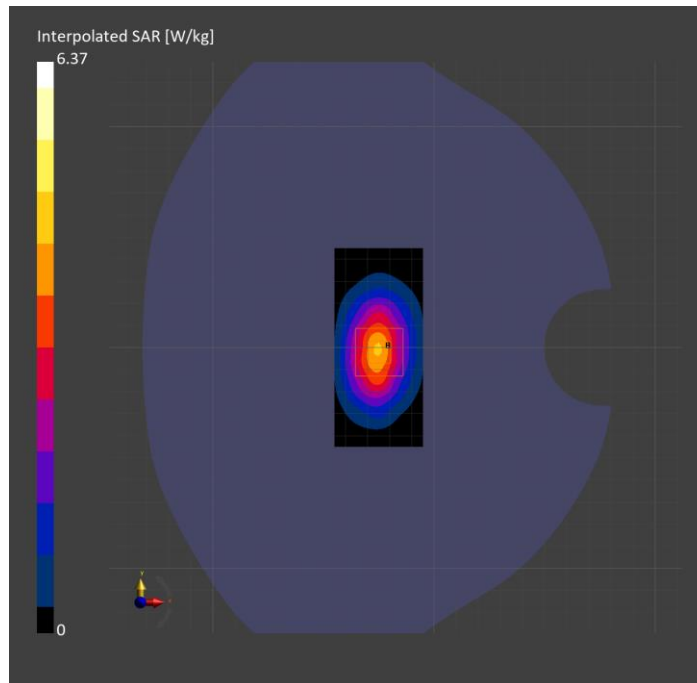
Probe   Calibration Date	EX3DV4 - SN7482   2024-04-15	Phantom	Twin-SAM V5.0 (30deg probe tilt)
DAE   Calibration Date	DAE4 Sn1239   2024-03-06	TSL Type	HBBL-600-10000
Software Version	16.2.4.2524		

## Scans Setup

	Area Scan	Zoom Scan
Grid Extents [mm]	40.0 x 90.0	30.0 x 30.0 x 30.0
Grid Steps [mm]	10.0 x 15.0	6.0 x 6.0 x 1.5
Sensor Surface [mm]	3.0	1.4
Graded Grid	N/A	Yes
M2/M1 [%]		80.5
Dist 3dB Peak [mm]		9.6

## Measurement Results

	Area Scan	Zoom Scan
psSAR1g [W/Kg]	3.49	<b>3.49</b>
psSAR10g [W/Kg]	1.86	<b>1.92</b>
Power Drift [dB]	N/A	-0.02





# System Performance Check Report for D1900V2 - SN5d140

## Exposure Conditions

Frequency [MHz]   Channel Number	1900.000   0	TSL Permittivity	41.4
Group   UID	CW   0--	TSL Conductivity [S/m]	1.35
Conversion Factor	7.48	Phantom Section   TSL	Flat   HSL

## Hardware Setup

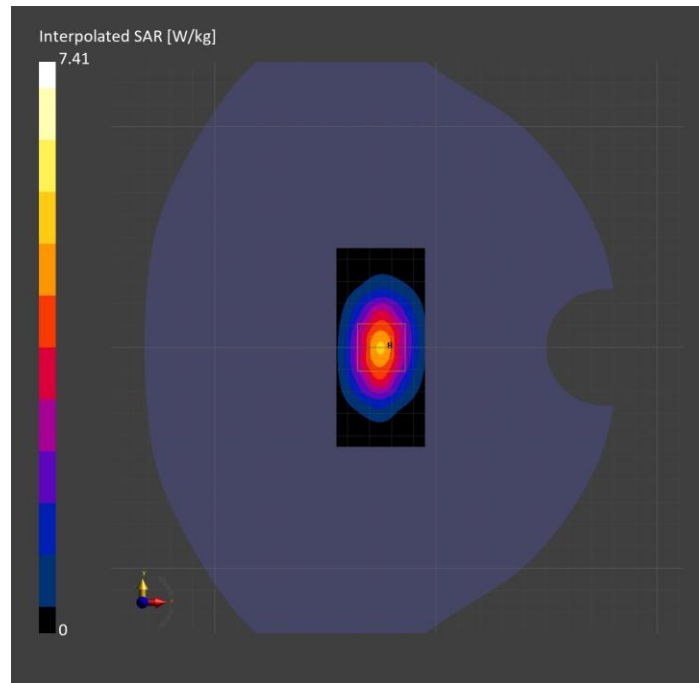
Probe   Calibration Date	EX3DV4 - SN7482   2024-04-15	Phantom	Twin-SAM V5.0 (30deg probe tilt)
DAE   Calibration Date	DAE4 Sn1239   2024-03-06	TSL Type	HBBL-600-10000
Software Version	16.2.4.2524		

## Scans Setup

	Area Scan	Zoom Scan
Grid Extents [mm]	40.0 x 90.0	30.0 x 30.0 x 30.0
Grid Steps [mm]	10.0 x 15.0	6.0 x 6.0 x 1.5
Sensor Surface [mm]	3.0	1.4
Graded Grid	N/A	Yes
M2/M1 [%]		81.0
Dist 3dB Peak [mm]		9.6

## Measurement Results

	Area Scan	Zoom Scan
psSAR1g [W/Kg]	4.01	<b>4.05</b>
psSAR10g [W/Kg]	2.07	<b>2.17</b>
Power Drift [dB]	N/A	0.00



# System Performance Check Report for D2600V2 - SN1006

## Exposure Conditions

Frequency [MHz]   Channel Number	2600.000   0	TSL Permittivity	41.2
Group   UID	CW   0--	TSL Conductivity [S/m]	1.99
Conversion Factor	7.03	Phantom Section   TSL	Flat   HSL

## Hardware Setup

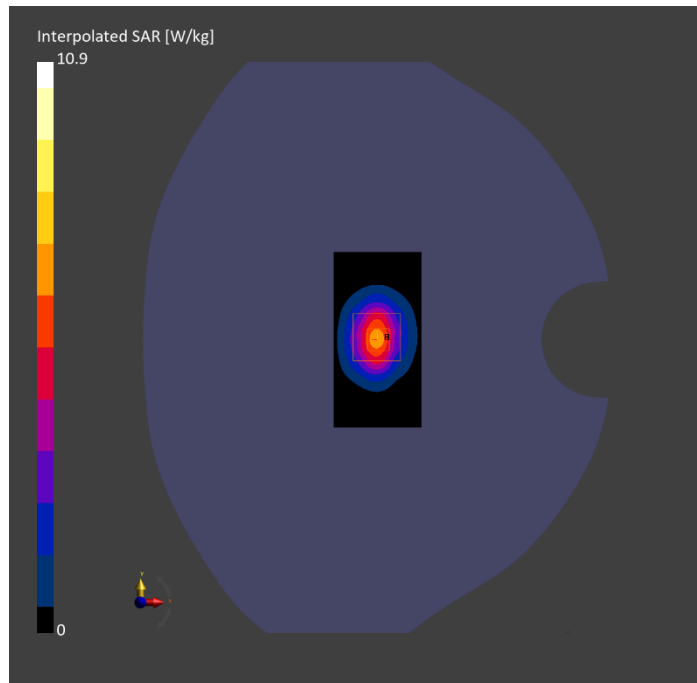
Probe   Calibration Date	EX3DV4 - SN7482   2024-04-15	Phantom	Twin-SAM V5.0 (30deg probe tilt)
DAE   Calibration Date	DAE4 Sn1239   2024-03-06	TSL Type	HBBL-600-10000
Software Version	16.2.4.2524		

## Scans Setup

	Area Scan	Zoom Scan
Grid Extents [mm]	40.0 x 80.0	30.0 x 30.0 x 30.0
Grid Steps [mm]	10.0 x 10.0	5.0 x 5.0 x 1.5
Sensor Surface [mm]	3.0	1.4
Graded Grid	N/A	Yes
M2/M1 [%]		79.9
Dist 3dB Peak [mm]		9.0

## Measurement Results

	Area Scan	Zoom Scan
psSAR1g [W/Kg]	5.24	5.17
psSAR10g [W/Kg]	2.32	2.34
Power Drift [dB]	N/A	-0.07



# System Performance Check Report for D2300V2 - SN1058

## Exposure Conditions

Frequency [MHz]   Channel Number	2300.000   0	TSL Permittivity	41.8
Group   UID	CW   0--	TSL Conductivity [S/m]	1.62
Conversion Factor	7.29	Phantom Section   TSL	Flat   HSL

## Hardware Setup

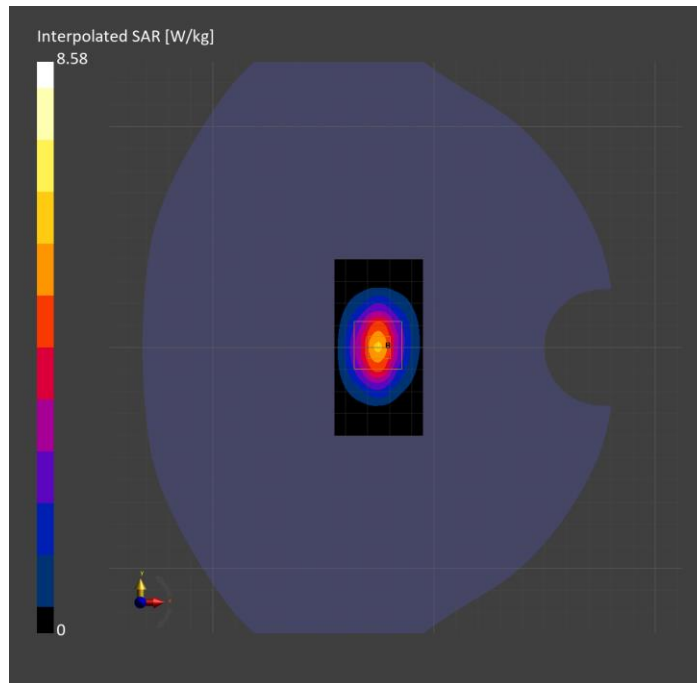
Probe   Calibration Date	EX3DV4 - SN7482   2024-04-15	Phantom	Twin-SAM V5.0 (30deg probe tilt)
DAE   Calibration Date	DAE4 Sn1239   2024-03-06	TSL Type	HBBL-600-10000
Software Version	16.2.4.2524		

## Scans Setup

	Area Scan	Zoom Scan
Grid Extents [mm]	40.0 x 80.0	30.0 x 30.0 x 30.0
Grid Steps [mm]	10.0 x 10.0	5.0 x 5.0 x 1.5
Sensor Surface [mm]	3.0	1.4
Graded Grid	N/A	Yes
M2/M1 [%]		82.9
Dist 3dB Peak [mm]		9.0

## Measurement Results

	Area Scan	Zoom Scan
psSAR1g [W/Kg]	4.47	4.51
psSAR10g [W/Kg]	2.10	2.23
Power Drift [dB]	N/A	-0.03



# System Performance Check Report for D2600V2 - SN1036

## Exposure Conditions

Frequency [MHz]   Channel Number	2600.000   0	TSL Permittivity	41.3
Group   UID	CW   0--	TSL Conductivity [S/m]	1.84
Conversion Factor	7.03	Phantom Section   TSL	Flat   HSL

## Hardware Setup

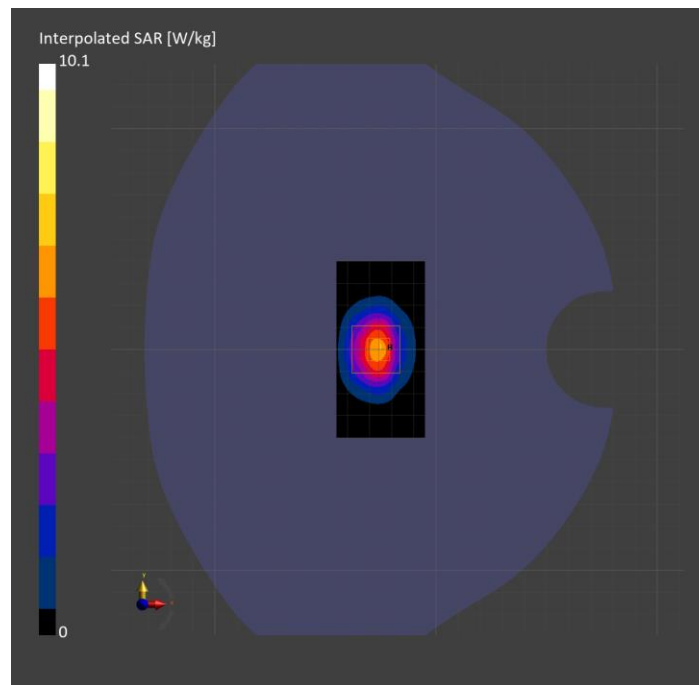
Probe   Calibration Date	EX3DV4 - SN7482   2024-04-15	Phantom	Twin-SAM V5.0 (30deg probe tilt)
DAE   Calibration Date	DAE4 Sn1239   2024-03-06	TSL Type	HBBL-600-10000
Software Version	16.2.4.2524		

## Scans Setup

	Area Scan	Zoom Scan
Grid Extents [mm]	40.0 x 80.0	30.0 x 30.0 x 30.0
Grid Steps [mm]	10.0 x 10.0	5.0 x 5.0 x 1.5
Sensor Surface [mm]	3.0	1.4
Graded Grid	N/A	Yes
M2/M1 [%]		81.0
Dist 3dB Peak [mm]		8.0

## Measurement Results

	Area Scan	Zoom Scan
psSAR1g [W/Kg]	5.01	<b>5.01</b>
psSAR10g [W/Kg]	2.24	<b>2.33</b>
Power Drift [dB]	N/A	-0.02



# System Performance Check Report for D2300V2 - SN1002

## Exposure Conditions

Frequency [MHz]   Channel Number	2300.000   0	TSL Permittivity	40.8
Group   UID	CW   0--	TSL Conductivity [S/m]	1.59
Conversion Factor	7.29	Phantom Section   TSL	Flat   HSL

## Hardware Setup

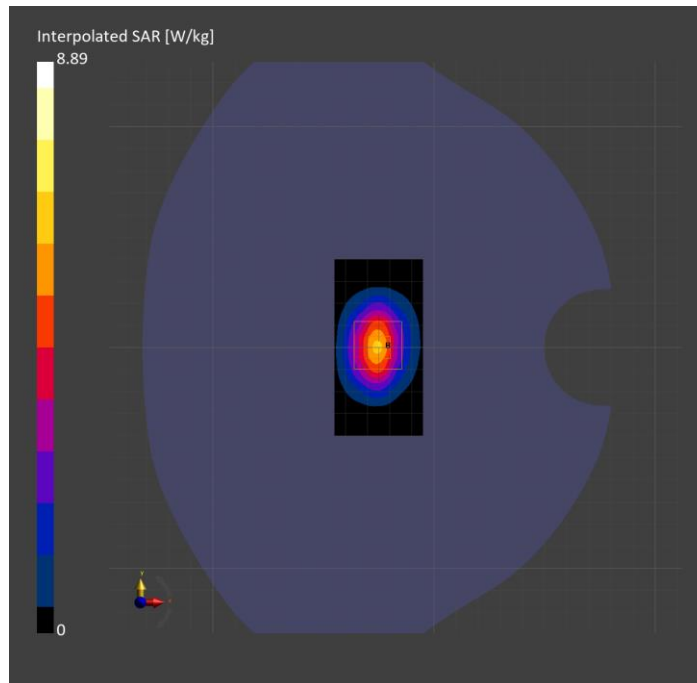
Probe   Calibration Date	EX3DV4 - SN7482   2024-04-15	Phantom	Twin-SAM V5.0 (30deg probe tilt)
DAE   Calibration Date	DAE4 Sn1239   2024-03-06	TSL Type	HBBL-600-10000
Software Version	16.2.4.2524		

## Scans Setup

	Area Scan	Zoom Scan
Grid Extents [mm]	40.0 x 80.0	30.0 x 30.0 x 30.0
Grid Steps [mm]	10.0 x 10.0	5.0 x 5.0 x 1.5
Sensor Surface [mm]	3.0	1.4
Graded Grid	N/A	Yes
M2/M1 [%]		82.7
Dist 3dB Peak [mm]		9.0

## Measurement Results

	Area Scan	Zoom Scan
psSAR1g [W/Kg]	4.72	<b>4.63</b>
psSAR10g [W/Kg]	2.24	<b>2.29</b>
Power Drift [dB]	N/A	-0.04



# System Performance Check Report for D2300V2 - SN1002

## Exposure Conditions

Frequency [MHz]   Channel Number	2300.000   0	TSL Permittivity	38.2
Group   UID	CW   0--	TSL Conductivity [S/m]	1.71
Conversion Factor	7.47	Phantom Section   TSL	Flat   HSL

## Hardware Setup

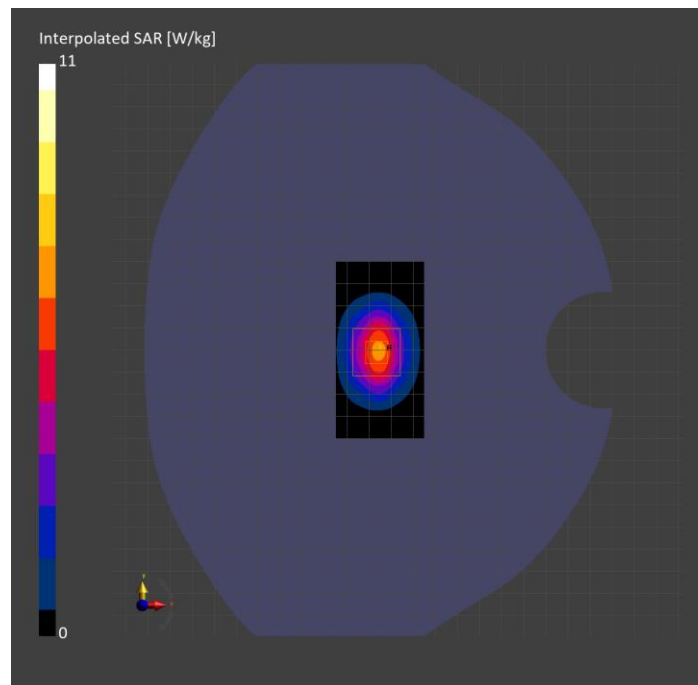
Probe   Calibration Date	EX3DV4 - SN7850   2023-10-27	Phantom	Twin-SAM V8.0 (30deg probe tilt)
DAE   Calibration Date	DAE4 Sn1673   2024-05-13	TSL Type	HBBL-600-10000
Software Version	16.2.4.2524		

## Scans Setup

	Area Scan	Zoom Scan
Grid Extents [mm]	40.0 x 80.0	30.0 x 30.0 x 30.0
Grid Steps [mm]	10.0 x 10.0	5.0 x 5.0 x 1.5
Sensor Surface [mm]	3.0	1.4
Graded Grid	N/A	Yes
M2/M1 [%]		79.3
Dist 3dB Peak [mm]		9.5

## Measurement Results

	Area Scan	Zoom Scan
psSAR1g [W/Kg]	5.33	5.32
psSAR10g [W/Kg]	2.55	2.54
Power Drift [dB]	N/A	-0.00



# System Performance Check Report for D2600V2 - SN1036

## Exposure Conditions

Frequency [MHz]   Channel Number	2600.000   0	TSL Permittivity	37.7
Group   UID	CW   0--	TSL Conductivity [S/m]	1.93
Conversion Factor	6.95	Phantom Section   TSL	Flat   HSL

## Hardware Setup

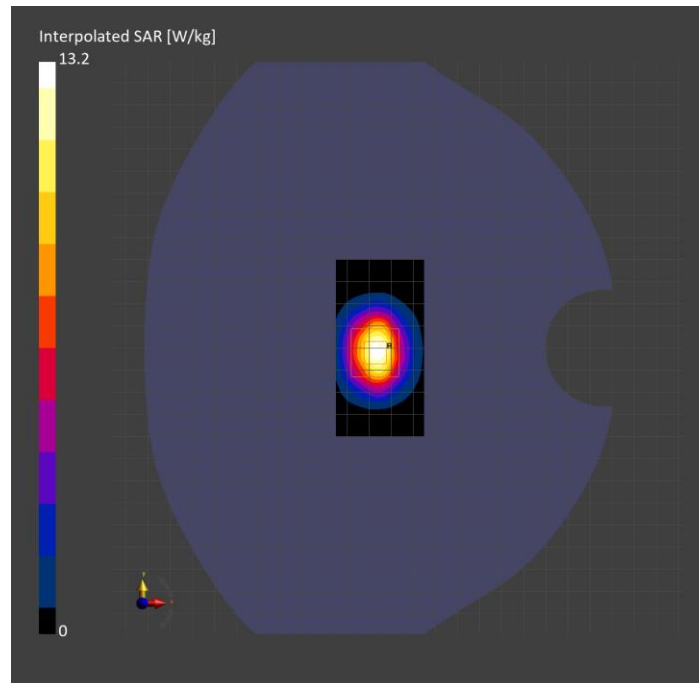
Probe   Calibration Date	EX3DV4 - SN7850   2023-10-27	Phantom	Twin-SAM V8.0 (30deg probe tilt)
DAE   Calibration Date	DAE4 Sn1673   2024-05-13	TSL Type	HBBL-600-10000
Software Version	16.2.4.2524		

## Scans Setup

	Area Scan	Zoom Scan
Grid Extents [mm]	40.0 x 80.0	30.0 x 30.0 x 30.0
Grid Steps [mm]	10.0 x 10.0	5.0 x 5.0 x 1.5
Sensor Surface [mm]	3.0	1.4
Graded Grid	N/A	Yes
M2/M1 [%]		76.8
Dist 3dB Peak [mm]		9.0

## Measurement Results

	Area Scan	Zoom Scan
psSAR1g [W/Kg]	5.93	5.95
psSAR10g [W/Kg]	2.69	2.67
Power Drift [dB]	N/A	-0.00



# System Performance Check Report for D2450V2 - SN748

## Exposure Conditions

Frequency [MHz]   Channel Number	2450.000   0	TSL Permittivity	36.5
Group   UID	CW   0--	TSL Conductivity [S/m]	1.79
Conversion Factor	7.3	Phantom Section   TSL	Flat   HSL

## Hardware Setup

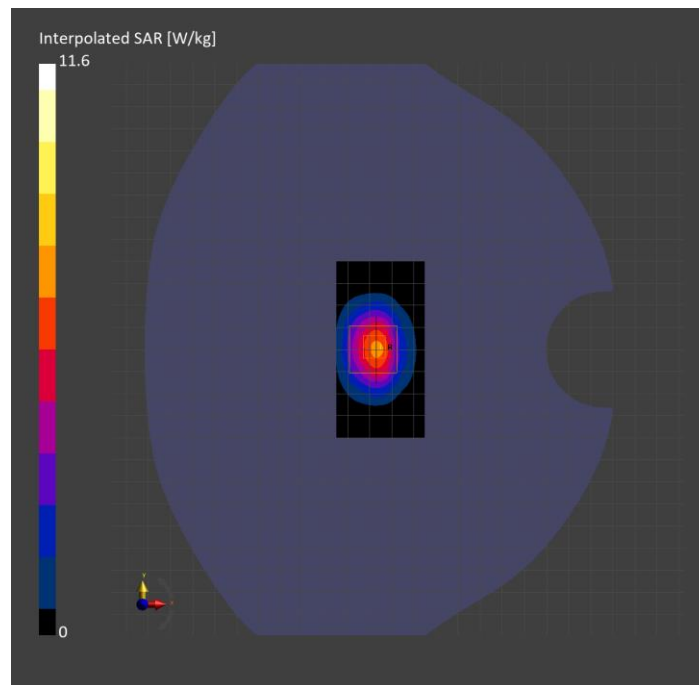
Probe   Calibration Date	EX3DV4 - SN7850   2023-10-27	Phantom	Twin-SAM V8.0 (30deg probe tilt)
DAE   Calibration Date	DAE4 Sn1673   2024-05-13	TSL Type	HBBL-600-10000
Software Version	16.2.4.2524		

## Scans Setup

	Area Scan	Zoom Scan
Grid Extents [mm]	40.0 x 80.0	30.0 x 30.0 x 30.0
Grid Steps [mm]	10.0 x 10.0	5.0 x 5.0 x 1.5
Sensor Surface [mm]	3.0	1.4
Graded Grid	N/A	Yes
M2/M1 [%]		78.7
Dist 3dB Peak [mm]		9.0

## Measurement Results

	Area Scan	Zoom Scan
psSAR1g [W/Kg]	5.50	5.48
psSAR10g [W/Kg]	2.61	2.54
Power Drift [dB]	N/A	-0.04





# System Performance Check Report for D750V3 - SN1019

## Exposure Conditions

Frequency [MHz]   Channel Number	750.000   0	TSL Permittivity	39.9
Group   UID	CW   0--	TSL Conductivity [S/m]	0.908
Conversion Factor	8.87	Phantom Section   TSL	Flat   HSL

## Hardware Setup

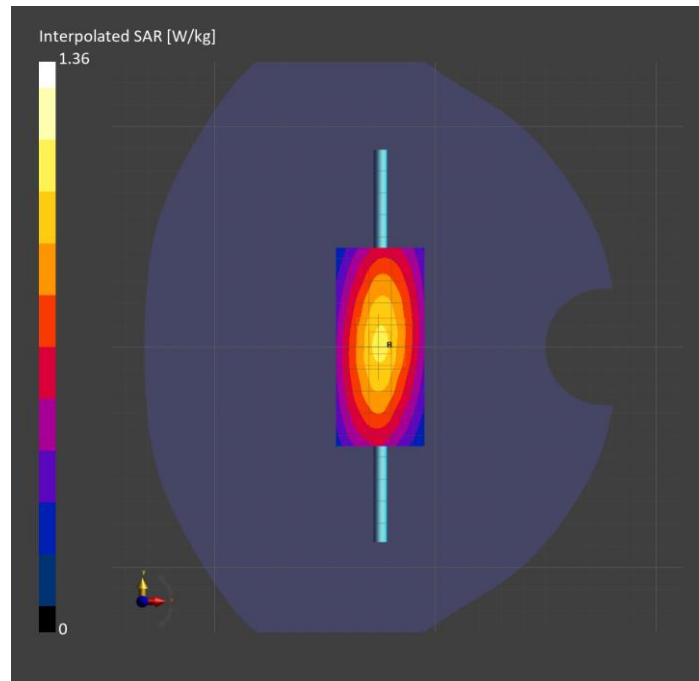
Probe   Calibration Date	EX3DV4 - SN7448   2024-02-07	Phantom	Twin-SAM V8.0 (30deg probe tilt)
DAE   Calibration Date	DAE4 Sn1784   2024-05-02	TSL Type	HBBL-600-10000
Software Version	16.2.4.2524		

## Scans Setup

	Area Scan	Zoom Scan
Grid Extents [mm]	40.0 x 90.0	30.0 x 30.0 x 30.0
Grid Steps [mm]	10.0 x 15.0	6.0 x 6.0 x 1.5
Sensor Surface [mm]	3.0	1.4
Graded Grid	N/A	Yes
M2/M1 [%]		87.6
Dist 3dB Peak [mm]		22.2

## Measurement Results

	Area Scan	Zoom Scan
psSAR1g [W/Kg]	0.917	<b>0.895</b>
psSAR10g [W/Kg]	0.610	<b>0.586</b>
Power Drift [dB]	N/A	-0.01



# System Performance Check Report for D835V2 - SN4d117

## Exposure Conditions

Frequency [MHz]   Channel Number	835.000   0	TSL Permittivity	39.7
Group   UID	CW   0--	TSL Conductivity [S/m]	0.940
Conversion Factor	9.03	Phantom Section   TSL	Flat   HSL

## Hardware Setup

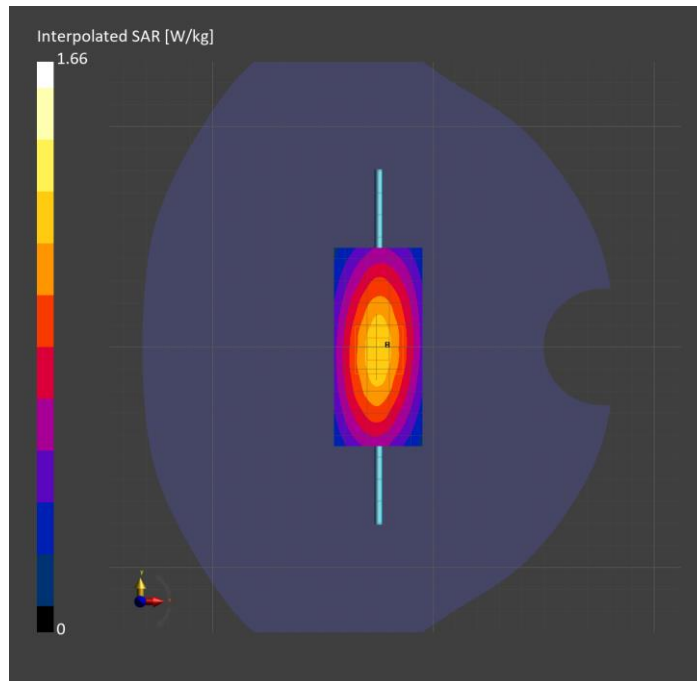
Probe   Calibration Date	EX3DV4 - SN7448   2024-02-07	Phantom	Twin-SAM V8.0 (30deg probe tilt)
DAE   Calibration Date	DAE4 Sn1784   2024-05-02	TSL Type	HBBL-600-10000
Software Version	16.2.4.2524		

## Scans Setup

	Area Scan	Zoom Scan
Grid Extents [mm]	40.0 x 90.0	30.0 x 30.0 x 30.0
Grid Steps [mm]	10.0 x 15.0	6.0 x 6.0 x 1.5
Sensor Surface [mm]	3.0	1.4
Graded Grid	N/A	Yes
M2/M1 [%]		86.0
Dist 3dB Peak [mm]		20.4

## Measurement Results

	Area Scan	Zoom Scan
psSAR1g [W/Kg]	1.06	<b>1.06</b>
psSAR10g [W/Kg]	0.696	<b>0.689</b>
Power Drift [dB]	N/A	0.01



# System Performance Check Report for D750V3 - SN1071

## Exposure Conditions

Frequency [MHz]   Channel Number	750.000   0	TSL Permittivity	39.9
Group   UID	CW   0--	TSL Conductivity [S/m]	0.929
Conversion Factor	8.87	Phantom Section   TSL	Flat   HSL

## Hardware Setup

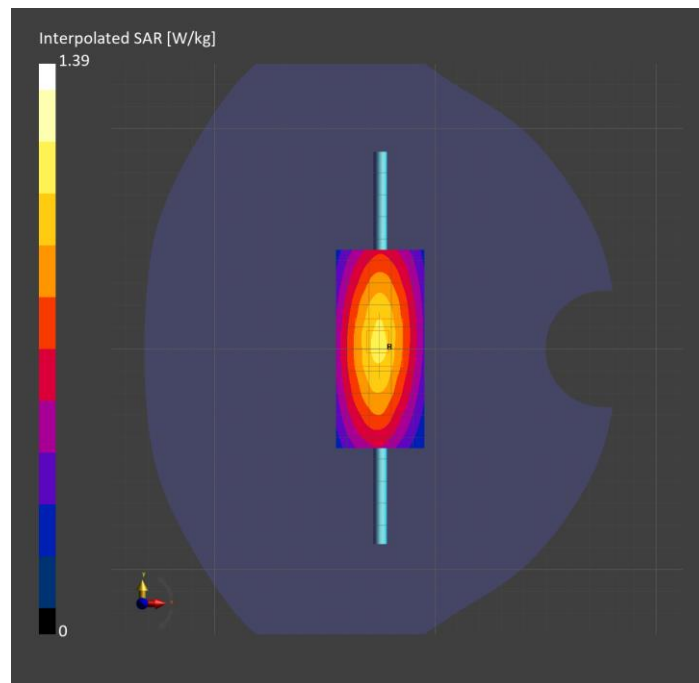
Probe   Calibration Date	EX3DV4 - SN7448   2024-02-07	Phantom	Twin-SAM V8.0 (30deg probe tilt)
DAE   Calibration Date	DAE4 Sn1784   2024-05-02	TSL Type	HBBL-600-10000
Software Version	16.2.4.2524		

## Scans Setup

	Area Scan	Zoom Scan
Grid Extents [mm]	40.0 x 90.0	30.0 x 30.0 x 30.0
Grid Steps [mm]	10.0 x 15.0	6.0 x 6.0 x 1.5
Sensor Surface [mm]	3.0	1.4
Graded Grid	N/A	Yes
M2/M1 [%]		88.0
Dist 3dB Peak [mm]		> 15.0

## Measurement Results

	Area Scan	Zoom Scan
psSAR1g [W/Kg]	0.940	<b>0.926</b>
psSAR10g [W/Kg]	0.627	<b>0.609</b>
Power Drift [dB]	N/A	-0.01



# System Performance Check Report for D1750V2 - SN1053

## Exposure Conditions

Frequency [MHz]   Channel Number	1750.000   0	TSL Permittivity	40.4
Group   UID	CW   0--	TSL Conductivity [S/m]	1.37
Conversion Factor	7.98	Phantom Section   TSL	Flat   HSL

## Hardware Setup

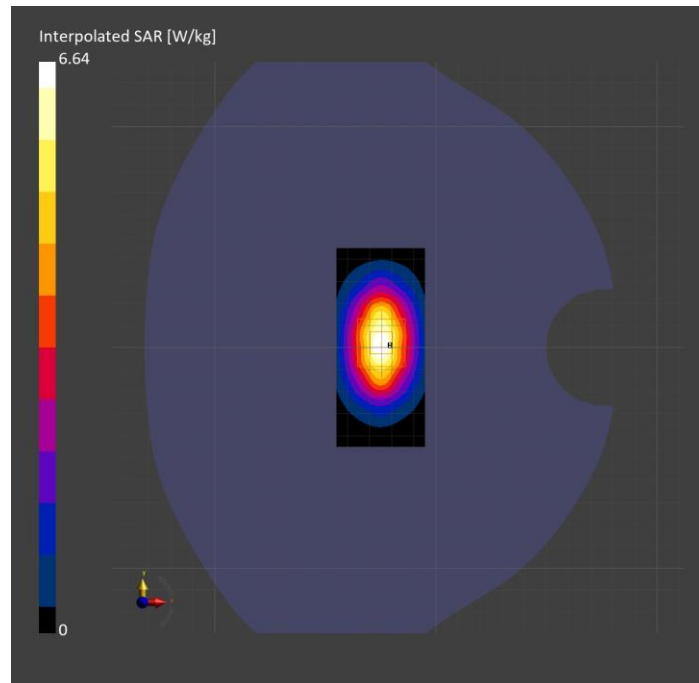
Probe   Calibration Date	EX3DV4 - SN7448   2024-02-07	Phantom	Twin-SAM V8.0 (30deg probe tilt)
DAE   Calibration Date	DAE4 Sn1784   2024-05-02	TSL Type	HBBL-600-10000
Software Version	16.2.4.2524		

## Scans Setup

	Area Scan	Zoom Scan
Grid Extents [mm]	40.0 x 90.0	30.0 x 30.0 x 30.0
Grid Steps [mm]	10.0 x 15.0	6.0 x 6.0 x 1.5
Sensor Surface [mm]	3.0	1.4
Graded Grid	N/A	Yes
M2/M1 [%]		82.9
Dist 3dB Peak [mm]		10.8

## Measurement Results

	Area Scan	Zoom Scan
psSAR1g [W/Kg]	3.61	<b>3.59</b>
psSAR10g [W/Kg]	1.92	<b>1.90</b>
Power Drift [dB]	N/A	0.01



# System Performance Check Report for D1900V2 - SN5d140

## Exposure Conditions

Frequency [MHz]   Channel Number	1900.000   0	TSL Permittivity	37.5
Group   UID	CW   0--	TSL Conductivity [S/m]	1.42
Conversion Factor	7.55	Phantom Section   TSL	Flat   HSL

## Hardware Setup

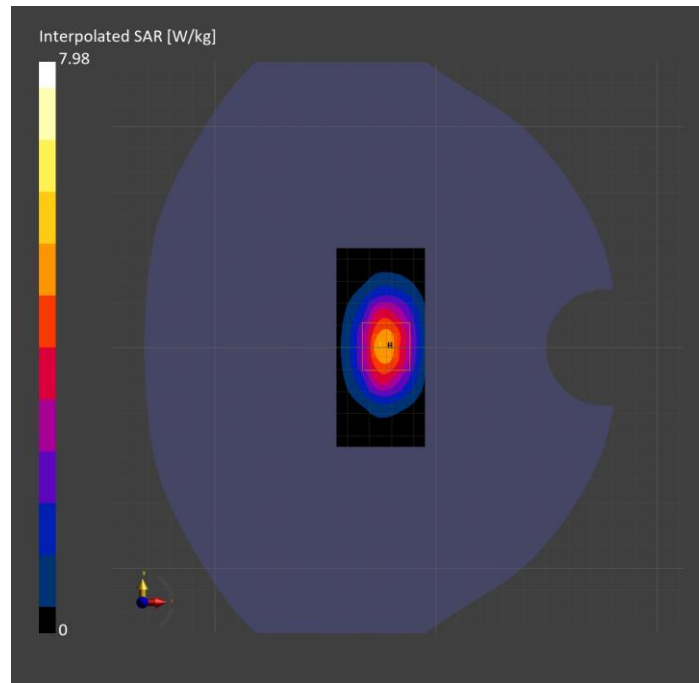
Probe   Calibration Date	EX3DV4 - SN7448   2024-02-07	Phantom	Twin-SAM V8.0 (30deg probe tilt)
DAE   Calibration Date	DAE4 Sn1784   2024-05-02	TSL Type	HBBL-600-10000
Software Version	16.2.4.2524		

## Scans Setup

	Area Scan	Zoom Scan
Grid Extents [mm]	40.0 x 90.0	30.0 x 30.0 x 30.0
Grid Steps [mm]	10.0 x 15.0	6.0 x 6.0 x 1.5
Sensor Surface [mm]	3.0	1.4
Graded Grid	N/A	Yes
M2/M1 [%]		82.7
Dist 3dB Peak [mm]		9.9

## Measurement Results

	Area Scan	Zoom Scan
psSAR1g [W/Kg]	4.24	<b>4.28</b>
psSAR10g [W/Kg]	2.22	<b>2.22</b>
Power Drift [dB]	N/A	0.02



# System Performance Check Report for D2600V2 - SN1036

## Exposure Conditions

Frequency [MHz]   Channel Number	2600.000   0	TSL Permittivity	36.5
Group   UID	CW   0--	TSL Conductivity [S/m]	1.89
Conversion Factor	7.16	Phantom Section   TSL	Flat   HSL

## Hardware Setup

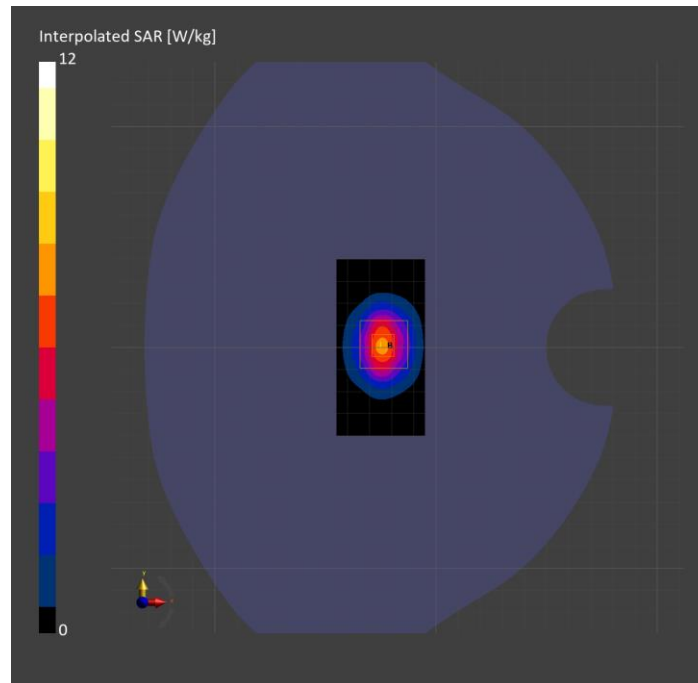
Probe   Calibration Date	EX3DV4 - SN7448   2024-02-07	Phantom	Twin-SAM V8.0 (30deg probe tilt)
DAE   Calibration Date	DAE4 Sn1784   2024-05-02	TSL Type	HBBL-600-10000
Software Version	16.2.4.2524		

## Scans Setup

	Area Scan	Zoom Scan
Grid Extents [mm]	40.0 x 80.0	30.0 x 30.0 x 30.0
Grid Steps [mm]	10.0 x 10.0	5.0 x 5.0 x 1.5
Sensor Surface [mm]	3.0	1.4
Graded Grid	N/A	Yes
M2/M1 [%]		79.5
Dist 3dB Peak [mm]		9.0

## Measurement Results

	Area Scan	Zoom Scan
psSAR1g [W/Kg]	5.64	5.70
psSAR10g [W/Kg]	2.53	2.58
Power Drift [dB]	N/A	-0.01



# System Performance Check Report for D1750V2 - SN1053

## Exposure Conditions

Frequency [MHz]   Channel Number	1750.000   0	TSL Permittivity	39.9
Group   UID	CW   0--	TSL Conductivity [S/m]	1.35
Conversion Factor	8.53	Phantom Section   TSL	Flat   HSL

## Hardware Setup

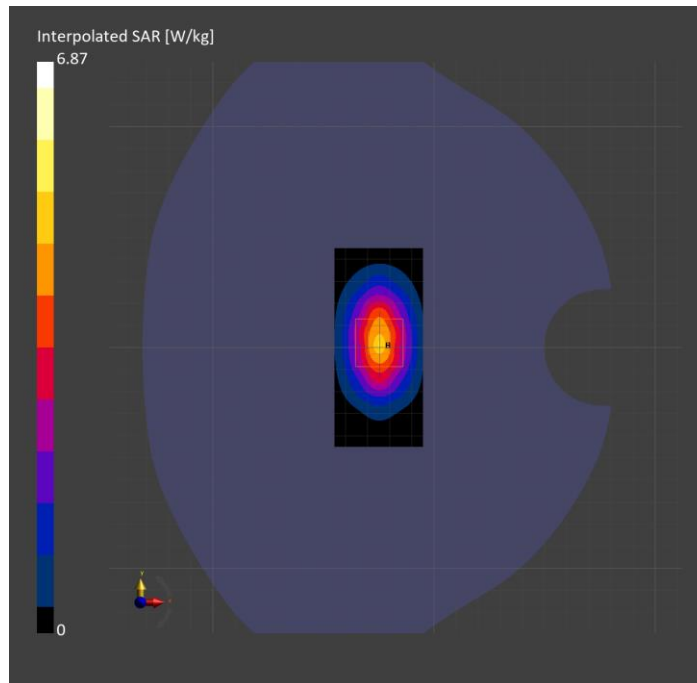
Probe   Calibration Date	EX3DV4 - SN7709   2023-11-30	Phantom	Twin-SAM V8.0 (30deg probe tilt)
DAE   Calibration Date	DAE4 Sn1714   2023-11-22	TSL Type	HBBL-600-10000
Software Version	16.2.4.2524		

## Scans Setup

	Area Scan	Zoom Scan
Grid Extents [mm]	40.0 x 90.0	30.0 x 30.0 x 30.0
Grid Steps [mm]	10.0 x 15.0	6.0 x 6.0 x 1.5
Sensor Surface [mm]	3.0	1.4
Graded Grid	N/A	Yes
M2/M1 [%]		84.0
Dist 3dB Peak [mm]		10.8

## Measurement Results

	Area Scan	Zoom Scan
psSAR1g [W/Kg]	3.85	<b>3.86</b>
psSAR10g [W/Kg]	2.05	<b>2.09</b>
Power Drift [dB]	N/A	0.01



# System Performance Check Report for D2450V2 - SN748

## Exposure Conditions

Frequency [MHz]   Channel Number	2450.000   0	TSL Permittivity	38.6
Group   UID	CW   0--	TSL Conductivity [S/m]	1.81
Conversion Factor	7.66	Phantom Section   TSL	Flat   HSL

## Hardware Setup

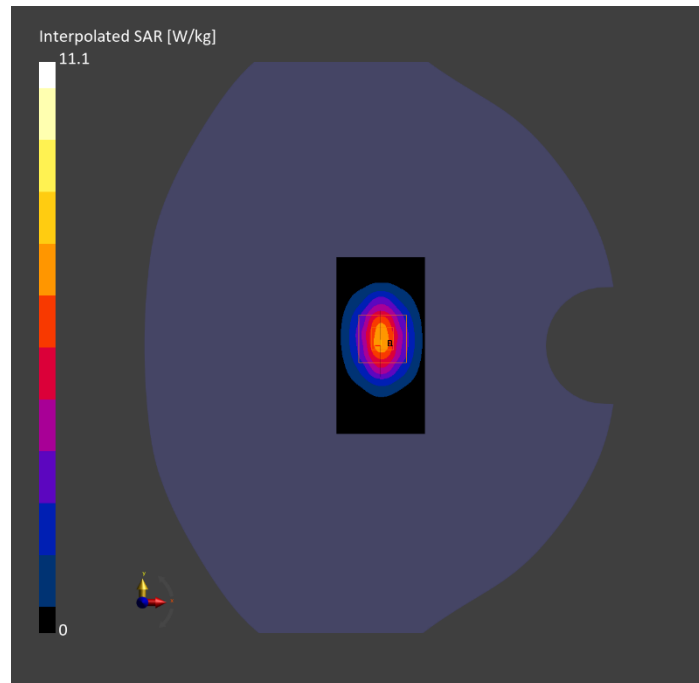
Probe   Calibration Date	EX3DV4 - SN7709   2023-11-30	Phantom	Twin-SAM V8.0 (30deg probe tilt)
DAE   Calibration Date	DAE4 Sn1714   2023-11-22	TSL Type	HBBL-600-10000
Software Version	16.2.4.2524		

## Scans Setup

	Area Scan	Zoom Scan
Grid Extents [mm]	40.0 x 80.0	30.0 x 30.0 x 30.0
Grid Steps [mm]	10.0 x 10.0	5.0 x 5.0 x 1.5
Sensor Surface [mm]	3.0	1.4
Graded Grid	N/A	Yes
M2/M1 [%]		81.5
Dist 3dB Peak [mm]		9.0

## Measurement Results

	Area Scan	Zoom Scan
psSAR1g [W/Kg]	5.52	5.56
psSAR10g [W/Kg]	2.54	2.64
Power Drift [dB]	N/A	-0.01





# System Performance Check Report for D3500V2 - SN1060

## Exposure Conditions

Frequency [MHz]   Channel Number	3500.000   0	TSL Permittivity	38.5
Group   UID	CW   0--	TSL Conductivity [S/m]	2.69
Conversion Factor	6.98	Phantom Section   TSL	Flat   HSL

## Hardware Setup

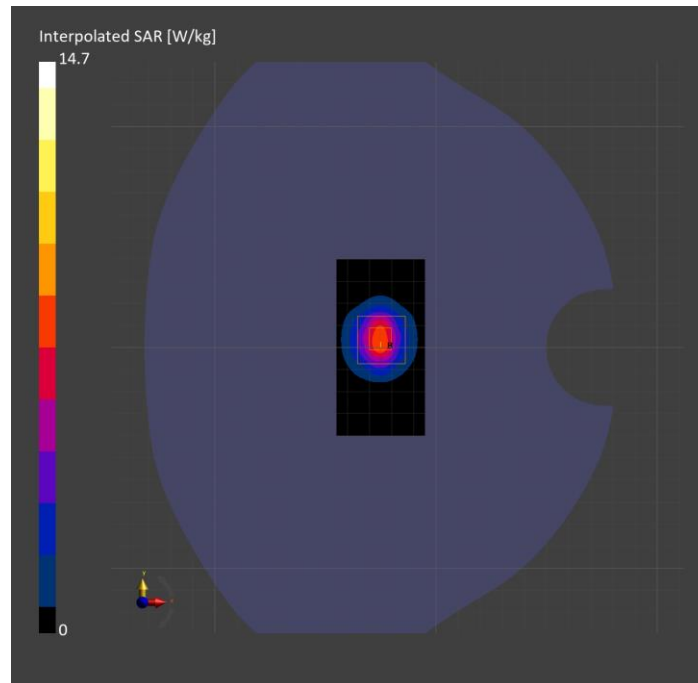
Probe   Calibration Date	EX3DV4 - SN7709   2023-11-30	Phantom	Twin-SAM V8.0 (30deg probe tilt)
DAE   Calibration Date	DAE4 Sn1714   2023-11-22	TSL Type	HBBL-600-10000
Software Version	16.2.4.2524		

## Scans Setup

	Area Scan	Zoom Scan
Grid Extents [mm]	40.0 x 80.0	28.0 x 28.0 x 28.0
Grid Steps [mm]	10.0 x 10.0	5.0 x 5.0 x 1.4
Sensor Surface [mm]	3.0	1.4
Graded Grid	N/A	Yes
M2/M1 [%]		78.4
Dist 3dB Peak [mm]		8.1

## Measurement Results

	Area Scan	Zoom Scan
psSAR1g [W/Kg]	6.08	6.17
psSAR10g [W/Kg]	2.32	2.41
Power Drift [dB]	N/A	-0.13



# System Performance Check Report for D3900V2 - SN1102

## Exposure Conditions

Frequency [MHz]   Channel Number	3900.000   0	TSL Permittivity	38.7
Group   UID	CW   0--	TSL Conductivity [S/m]	3.22
Conversion Factor	6.88	Phantom Section   TSL	Flat   HSL

## Hardware Setup

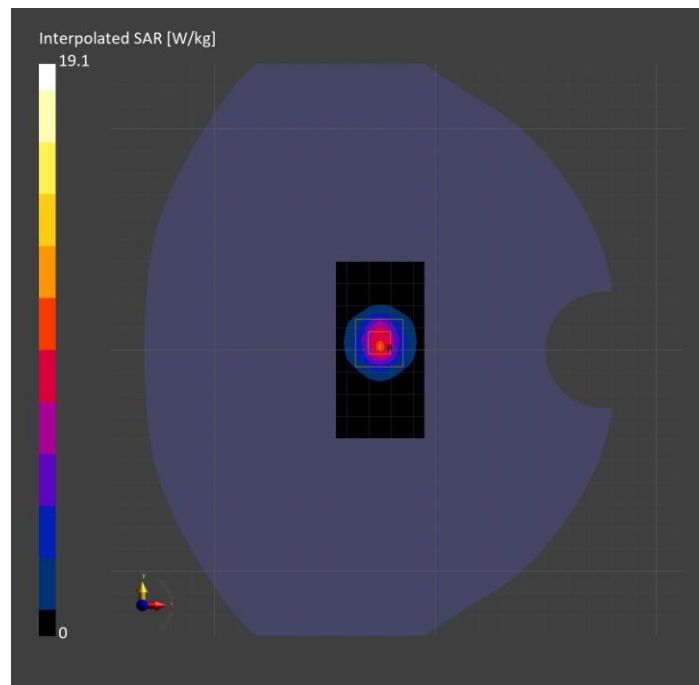
Probe   Calibration Date	EX3DV4 - SN7709   2023-11-30	Phantom	Twin-SAM V8.0 (30deg probe tilt)
DAE   Calibration Date	DAE4 Sn1714   2023-11-22	TSL Type	HBBL-600-10000
Software Version	16.2.4.2524		

## Scans Setup

	Area Scan	Zoom Scan
Grid Extents [mm]	40.0 x 80.0	28.0 x 28.0 x 28.0
Grid Steps [mm]	10.0 x 10.0	5.0 x 5.0 x 1.4
Sensor Surface [mm]	3.0	1.4
Graded Grid	N/A	Yes
M2/M1 [%]		75.7
Dist 3dB Peak [mm]		8.0

## Measurement Results

	Area Scan	Zoom Scan
psSAR1g [W/Kg]	6.97	7.19
psSAR10g [W/Kg]	2.46	2.59
Power Drift [dB]	N/A	0.00



# System Performance Check Report for D1900V2 - SN5d140

## Exposure Conditions

Frequency [MHz]   Channel Number	1900.000   0	TSL Permittivity	41.8
Group   UID	CW   0--	TSL Conductivity [S/m]	1.48
Conversion Factor	8.08	Phantom Section   TSL	Flat   HSL

## Hardware Setup

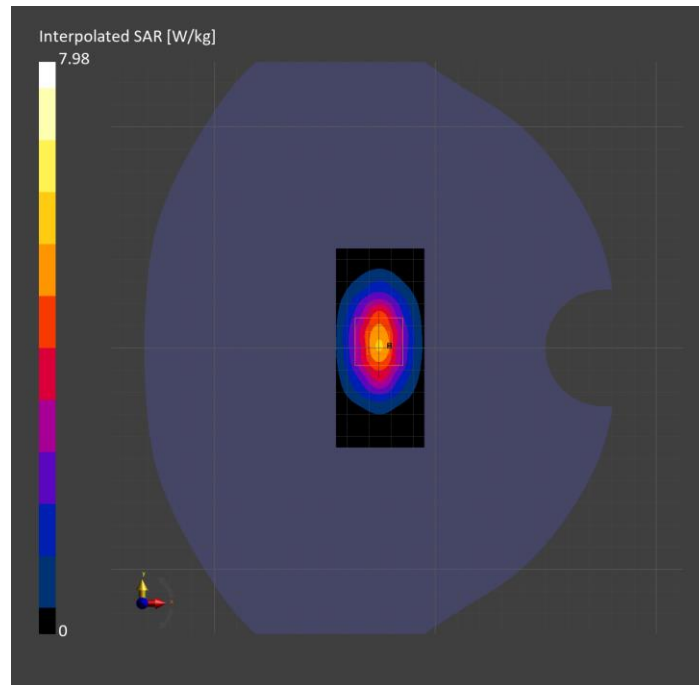
Probe   Calibration Date	EX3DV4 - SN7709   2023-11-30	Phantom	Twin-SAM V8.0 (30deg probe tilt)
DAE   Calibration Date	DAE4 Sn1714   2023-11-22	TSL Type	HBBL-600-10000
Software Version	16.2.4.2524		

## Scans Setup

	Area Scan	Zoom Scan
Grid Extents [mm]	40.0 x 90.0	30.0 x 30.0 x 30.0
Grid Steps [mm]	10.0 x 15.0	6.0 x 6.0 x 1.5
Sensor Surface [mm]	3.0	1.4
Graded Grid	N/A	Yes
M2/M1 [%]		83.1
Dist 3dB Peak [mm]		9.7

## Measurement Results

	Area Scan	Zoom Scan
psSAR1g [W/Kg]	4.30	<b>4.32</b>
psSAR10g [W/Kg]	2.21	<b>2.24</b>
Power Drift [dB]	N/A	-0.01



# System Performance Check Report for D2300V2 - SN1058

## Exposure Conditions

Frequency [MHz]   Channel Number	2300.000   0	TSL Permittivity	37.1
Group   UID	CW   0--	TSL Conductivity [S/m]	1.62
Conversion Factor	7.39	Phantom Section   TSL	Flat   HSL

## Hardware Setup

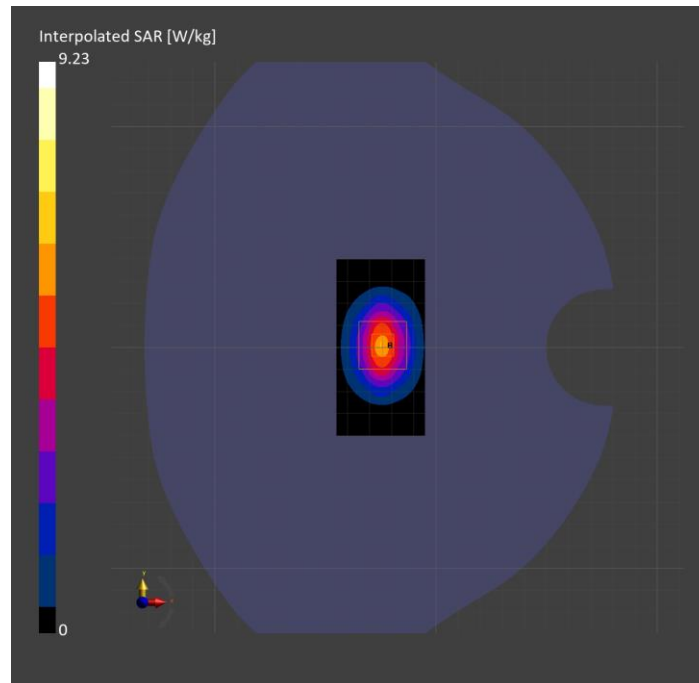
Probe   Calibration Date	EX3DV4 - SN3749   2024-01-11	Phantom	Twin-SAM V8.0 (30deg probe tilt)
DAE   Calibration Date	DAE4 Sn1674   2024-05-13	TSL Type	HBBL-600-10000
Software Version	16.2.4.2524		

## Scans Setup

	Area Scan	Zoom Scan
Grid Extents [mm]	40.0 x 80.0	30.0 x 30.0 x 30.0
Grid Steps [mm]	10.0 x 10.0	5.0 x 5.0 x 1.5
Sensor Surface [mm]	3.0	1.4
Graded Grid	N/A	Yes
M2/M1 [%]		79.8
Dist 3dB Peak [mm]		9.5

## Measurement Results

	Area Scan	Zoom Scan
psSAR1g [W/Kg]	4.50	<b>4.55</b>
psSAR10g [W/Kg]	2.15	<b>2.20</b>
Power Drift [dB]	0.01	0.01



# System Performance Check Report for D1900V2 - SN5d140

## Exposure Conditions

Frequency [MHz]   Channel Number	1900.000   0	TSL Permittivity	39.2
Group   UID	CW   0--	TSL Conductivity [S/m]	1.42
Conversion Factor	7.67	Phantom Section   TSL	Flat   HSL

## Hardware Setup

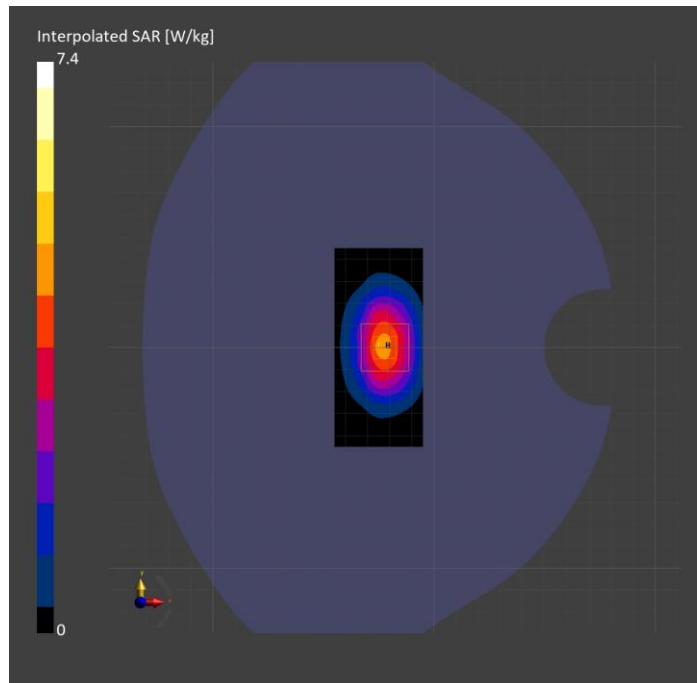
Probe   Calibration Date	EX3DV4 - SN3749   2024-01-11	Phantom	Twin-SAM V8.0 (30deg probe tilt)
DAE   Calibration Date	DAE4 Sn1674   2024-05-13	TSL Type	HBBL-600-10000
Software Version	16.2.4.2524		

## Scans Setup

	Area Scan	Zoom Scan
Grid Extents [mm]	40.0 x 90.0	30.0 x 30.0 x 30.0
Grid Steps [mm]	10.0 x 15.0	6.0 x 6.0 x 1.5
Sensor Surface [mm]	3.0	1.4
Graded Grid	N/A	Yes
M2/M1 [%]		80.6
Dist 3dB Peak [mm]		9.6

## Measurement Results

	Area Scan	Zoom Scan
psSAR1g [W/Kg]	3.73	3.82
psSAR10g [W/Kg]	1.97	1.98
Power Drift [dB]	0.01	0.01



# System Performance Check Report for D1750V2 - SN1053

## Exposure Conditions

Frequency [MHz]   Channel Number	1750.000   0	TSL Permittivity	38.5
Group   UID	CW   0--	TSL Conductivity [S/m]	1.35
Conversion Factor	7.83	Phantom Section   TSL	Flat   HSL

## Hardware Setup

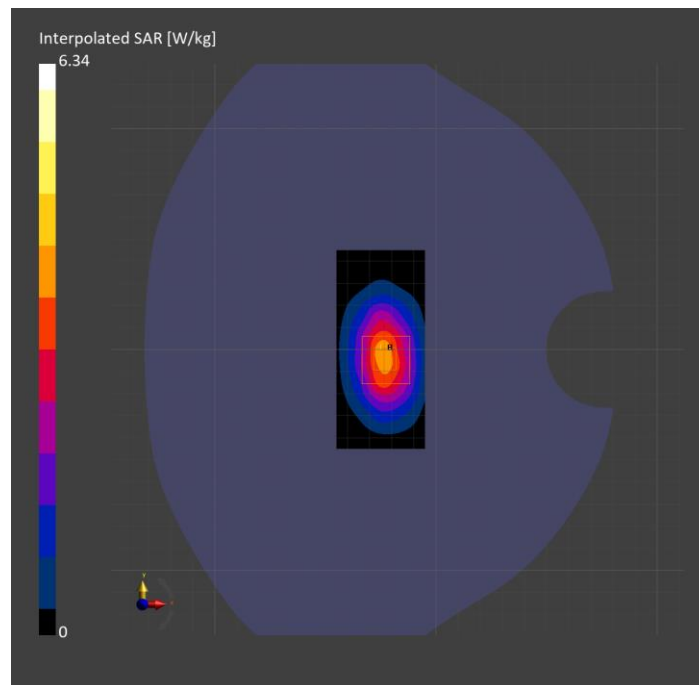
Probe   Calibration Date	EX3DV4 - SN3749   2024-01-11	Phantom	Twin-SAM V8.0 (30deg probe tilt)
DAE   Calibration Date	DAE4 Sn1674   2024-05-13	TSL Type	HBBL-600-10000
Software Version	16.2.4.2524		

## Scans Setup

	Area Scan	Zoom Scan
Grid Extents [mm]	40.0 x 90.0	30.0 x 30.0 x 30.0
Grid Steps [mm]	10.0 x 15.0	6.0 x 6.0 x 1.5
Sensor Surface [mm]	3.0	1.4
Graded Grid	N/A	Yes
M2/M1 [%]		81.6
Dist 3dB Peak [mm]		9.7

## Measurement Results

	Area Scan	Zoom Scan
psSAR1g [W/Kg]	3.31	3.39
psSAR10g [W/Kg]	1.78	1.81
Power Drift [dB]	-0.01	-0.02



# System Performance Check Report for D6.5GHzV2 - SN1032

## Exposure Conditions

Frequency [MHz]   Channel Number	6500.000   0	TSL Permittivity	32.6
Group   UID	CW   0--	TSL Conductivity [S/m]	5.84
Conversion Factor	5.24	Phantom Section   TSL	Flat   HSL

## Hardware Setup

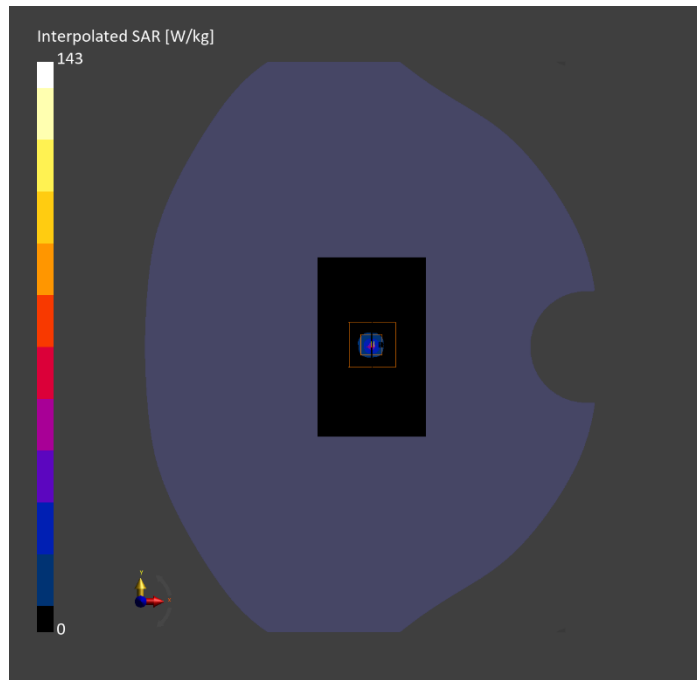
Probe   Calibration Date	EX3DV4 - SN7498   2024-03-12	Phantom	Twin-SAM V8.0 (30deg probe tilt)
DAE   Calibration Date	DAE4 Sn1796   2024-05-02	TSL Type	HBBL-600-10000
Software Version	16.2.4.2524		

## Scans Setup

	Area Scan	Zoom Scan
Grid Extents [mm]	51.0 x 85.0	22.0 x 22.0 x 22.0
Grid Steps [mm]	8.5 x 8.5	3.4 x 3.4 x 1.4
Sensor Surface [mm]	3.0	1.4
Graded Grid	N/A	Yes
M2/M1 [%]		52.1
Dist 3dB Peak [mm]		4.8

## Measurement Results

	Area Scan	Zoom Scan	APD
psSAR1g [W/Kg]	21.0	<b>23.0</b>	N/A
psSAR8g [W/Kg]	4.74	<b>5.16</b>	N/A
psSAR10g [W/Kg]	3.95	<b>4.23</b>	N/A
psAPD (4.0cm <sup>2</sup> , sq.) [W/m <sup>2</sup> ]	N/A	N/A	<b>103</b>
Power Drift [dB]	0.03	-0.03	N/A



# System Performance Check Report for D6.5GHzV2 - SN1033

## Exposure Conditions

Frequency [MHz]   Channel Number	6500.000   0	TSL Permittivity	33.7
Group   UID	CW   0--	TSL Conductivity [S/m]	5.91
Conversion Factor	5.24	Phantom Section   TSL	Flat   HSL

## Hardware Setup

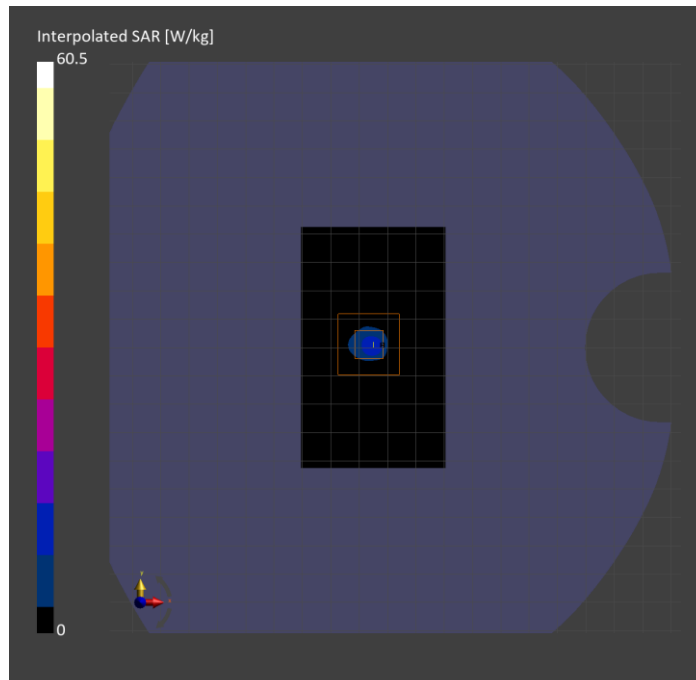
Probe   Calibration Date	EX3DV4 - SN7498   2024-03-12	Phantom	Twin-SAM V8.0 (30deg probe tilt)
DAE   Calibration Date	DAE4 Sn1796   2024-05-02	TSL Type	HBBL-600-10000
Software Version	16.2.4.2524		

## Scans Setup

	Area Scan	Zoom Scan
Grid Extents [mm]	51.0 x 85.0	22.0 x 22.0 x 22.0
Grid Steps [mm]	8.5 x 8.5	3.4 x 3.4 x 1.4
Sensor Surface [mm]	3.0	1.4
Graded Grid	N/A	Yes
M2/M1 [%]		52.6
Dist 3dB Peak [mm]		4.8

## Measurement Results

	Area Scan	Zoom Scan	APD
psSAR1g [W/Kg]	8.52	<b>9.82</b>	N/A
psSAR8g [W/Kg]	2.05	<b>2.25</b>	N/A
psSAR10g [W/Kg]	1.70	<b>1.84</b>	N/A
psAPD (4.0cm <sup>2</sup> , sq.) [W/m <sup>2</sup> ]	N/A	N/A	<b>44.9</b>
Power Drift [dB]	-0.02	-0.04	N/A





# System Performance Check Report for D6.5GHzV2 - SN1033

## Exposure Conditions

Frequency [MHz]   Channel Number	6500.000   0	TSL Permittivity	33.6
Group   UID	CW   0--	TSL Conductivity [S/m]	6.24
Conversion Factor	4.63	Phantom Section   TSL	Flat   HSL

## Hardware Setup

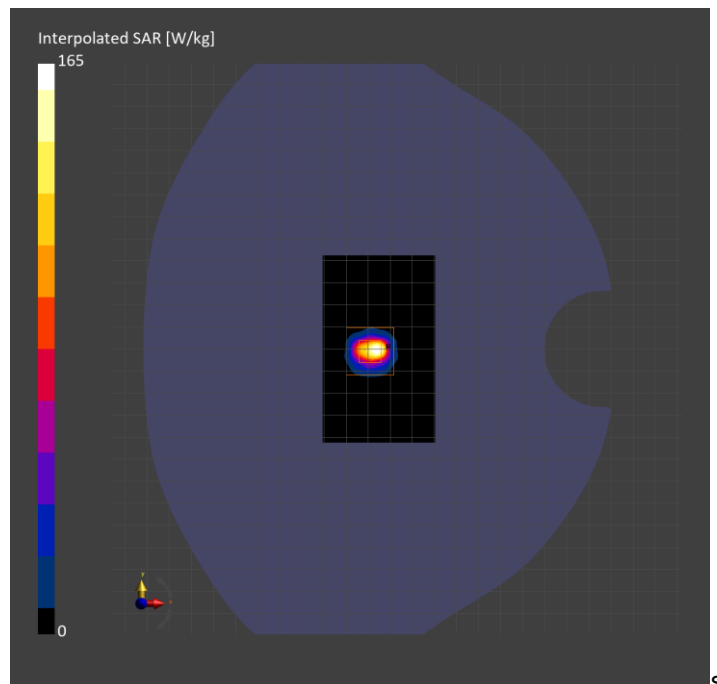
Probe   Calibration Date	EX3DV4 - SN7587   2024-04-15	Phantom	Twin-SAM V8.0 (30deg probe tilt)
DAE   Calibration Date	DAE4 Sn1797   2024-05-02	TSL Type	HBBL-600-10000
Software Version	16.2.4.2524		

## Scans Setup

	Area Scan	Zoom Scan
Grid Extents [mm]	51.0 x 85.0	22.0 x 22.0 x 22.0
Grid Steps [mm]	8.5 x 8.5	3.4 x 3.4 x 1.4
Sensor Surface [mm]	3.0	1.4
Graded Grid	N/A	Yes
M2/M1 [%]		51.0
Dist 3dB Peak [mm]		4.6

## Measurement Results

	Area Scan	Zoom Scan	APD
psSAR1g [W/Kg]	18.5	<b>24.8</b>	N/A
psSAR8g [W/Kg]	4.79	<b>5.52</b>	N/A
psSAR10g [W/Kg]	3.98	<b>4.52</b>	N/A
psAPD (4.0cm <sup>2</sup> , sq.) [W/m <sup>2</sup> ]	N/A	N/A	<b>110</b>
Power Drift [dB]	N/A	-0.04	N/A



# System Performance Check Report for D6.5GHzV2 - SN1033

## Exposure Conditions

Frequency [MHz]   Channel Number	6500.000   0	TSL Permittivity	32.7
Group   UID	CW   0--	TSL Conductivity [S/m]	5.93
Conversion Factor	5.35	Phantom Section   TSL	Flat   HSL

## Hardware Setup

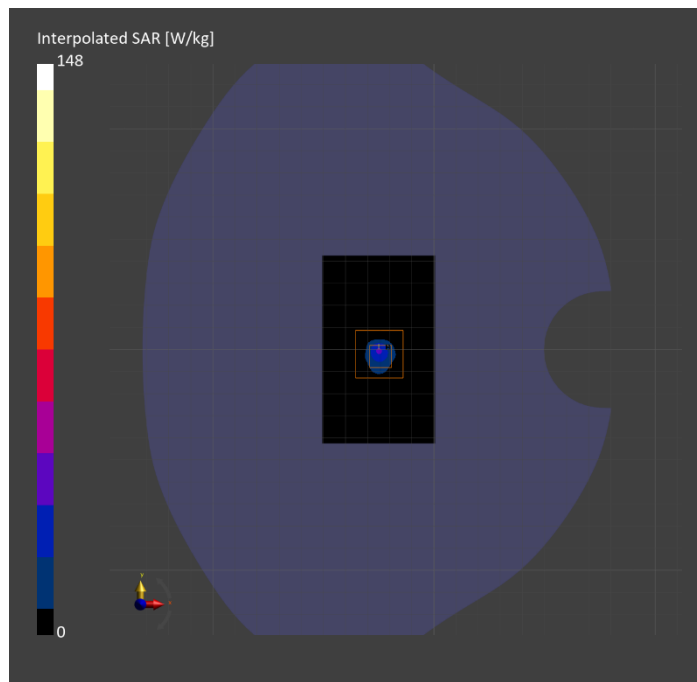
Probe   Calibration Date	EX3DV4 - SN7501   2024-03-14	Phantom	Twin-SAM V8.0 (30deg probe tilt)
DAE   Calibration Date	DAE4 Sn1357   2024-01-09	TSL Type	HBBL-600-10000
Software Version	16.2.4.2524		

## Scans Setup

	Area Scan	Zoom Scan
Grid Extents [mm]	51.0 x 85.0	22.0 x 22.0 x 22.0
Grid Steps [mm]	8.5 x 8.5	3.4 x 3.4 x 1.4
Sensor Surface [mm]	3.0	1.4
Graded Grid	N/A	Yes
M2/M1 [%]		58.1
Dist 3dB Peak [mm]		5.0

## Measurement Results

	Area Scan	Zoom Scan	APD
psSAR1g [W/Kg]	22.4	26.2	N/A
psSAR8g [W/Kg]	5.70	6.33	N/A
psSAR10g [W/Kg]	4.74	5.23	N/A
psAPD (4.0cm <sup>2</sup> , sq.) [W/m <sup>2</sup> ]	N/A	N/A	127
Power Drift [dB]	N/A	-0.01	N/A



# System Performance Check Report for D6.5GHzV2 - SN1033

## Exposure Conditions

Frequency [MHz]   Channel Number	6500.000   0	TSL Permittivity	34.1
Group   UID	CW   0--	TSL Conductivity [S/m]	6.30
Conversion Factor	5.1	Phantom Section   TSL	Flat   HSL

## Hardware Setup

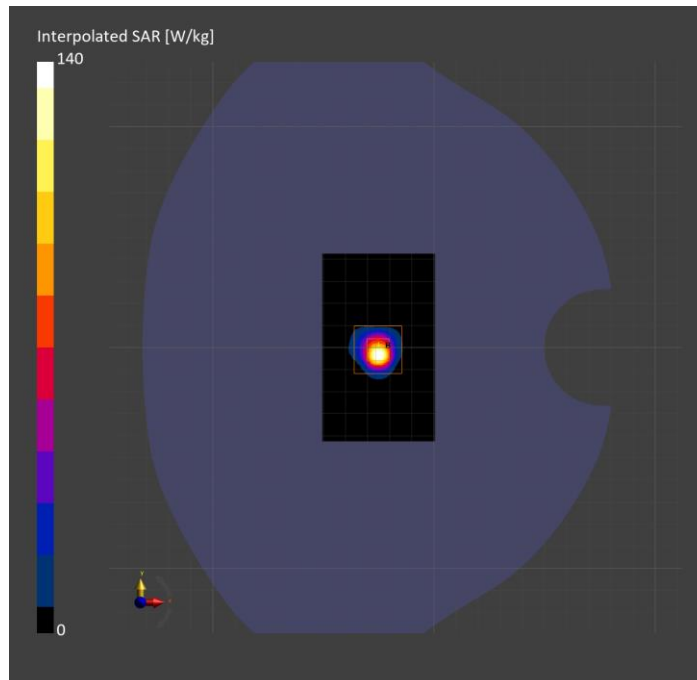
Probe   Calibration Date	EX3DV4 - SN7810   2024-05-08	Phantom	Twin-SAM V8.0 (30deg probe tilt)
DAE   Calibration Date	DAE4 Sn1787   2024-05-02	TSL Type	HBBL-600-10000
Software Version	16.2.4.2524		

## Scans Setup

	Area Scan	Zoom Scan
Grid Extents [mm]	51.0 x 85.0	22.0 x 22.0 x 22.0
Grid Steps [mm]	8.5 x 8.5	3.4 x 3.4 x 1.4
Sensor Surface [mm]	3.0	1.4
Graded Grid	N/A	Yes
M2/M1 [%]		50.2
Dist 3dB Peak [mm]		4.6

## Measurement Results

	Area Scan	Zoom Scan	APD
psSAR1g [W/Kg]	18.4	21.7	N/A
psSAR8g [W/Kg]	4.31	4.92	N/A
psSAR10g [W/Kg]	3.57	4.04	N/A
psAPD (4.0cm <sup>2</sup> , sq.) [W/m <sup>2</sup> ]	N/A	N/A	98.4
Power Drift [dB]	N/A	0.02	N/A



# Validation band: CW, FRONT

## Exposure Conditions

Band	Validation band	Phantom Section	5G
Frequency [MHz]   Channel Number	10000.0   10000	Conversion Factor	1.0
Group   UID	CW, 0--	Position   Test Distance [mm]	FRONT   10.00

## Hardware Setup

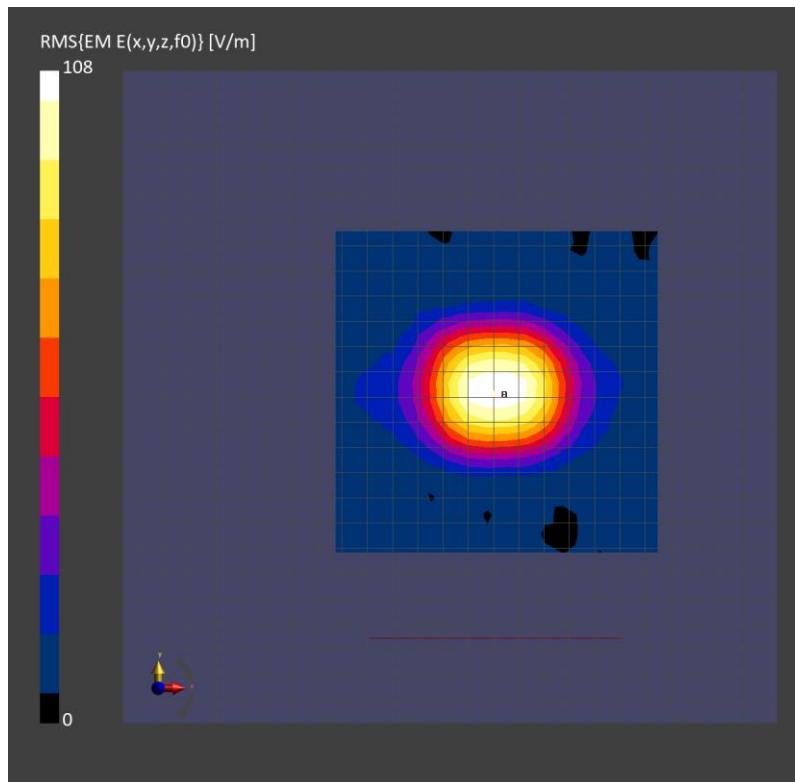
Probe   Calibration Date	EUmmWV4 - SN9589_F1-55GHz   2023-09-05	Phantom	mmWave   xxxx
DAE   Calibration Date	DAE4ip Sn1621   2024-04-12	Medium	Air   -
Software Version	3.2.0.1840		

## Scan Setup

Scan Type	5G Scan	Grid Extents [mm]	120.0 x 120.0
Grid Steps [lambda]	0.25 x 0.25	Sensor Surface [mm]	10.0

## Measurement Results

Avg. Area [cm <sup>2</sup> ]	4.00
psPDn+ [W/m <sup>2</sup> ]	25.9
psPDtot+ [W/m <sup>2</sup> ]	26.0
psPDmod+ [W/m <sup>2</sup> ]	26.1
E <sub>max</sub> [V/m]	105
H <sub>max</sub> [A/m]	0.283
Power Drift [dB]	-0.02



# Validation band: CW, FRONT

## Exposure Conditions

Band	Validation band	Phantom Section	5G
Frequency [MHz]   Channel Number	10000.0   10000	Conversion Factor	1.0
Group   UID	CW, 0--	Position   Test Distance [mm]	FRONT   10.00

## Hardware Setup

Probe   Calibration Date	EUmmWV4 - SN9619_F1-55GHz   2024-03-08	Phantom	mmWave   xxxx
DAE   Calibration Date	DAE4 Sn1472   2024-01-16	Medium	Air   -
Software Version	3.2.0.1840		

## Scan Setup

Scan Type	5G Scan	Grid Extents [mm]	120.0 x 120.0
Grid Steps [lambda]	0.25 x 0.25	Sensor Surface [mm]	10.0

## Measurement Results

Avg. Area [cm <sup>2</sup> ]	4.00
psPDn+ [W/m <sup>2</sup> ]	40.8
psPDtot+ [W/m <sup>2</sup> ]	41.0
psPDmod+ [W/m <sup>2</sup> ]	41.2
E <sub>max</sub> [V/m]	132
H <sub>max</sub> [A/m]	0.370
Power Drift [dB]	-0.02

