

Measurement Report for Band n26: 5G NR (DFT-s-OFDM, 1 RB, 20 MHz, QPSK, 15 kHz) RBPosition:Mid AntennaCfg:SISO, CHEEK

Exposure Conditions

Band	Band n26	TSL Permittivity	40.1
Frequency [MHz] Channel Number	831.500 166300	TSL Conductivity [S/m]	0.865
Group UID	5G NR FR1 FDD 10931-AAC	Phantom Section TSL	RightHead HSL
Conversion Factor	7.83	Test Distance [mm]	0.00

Hardware Setup

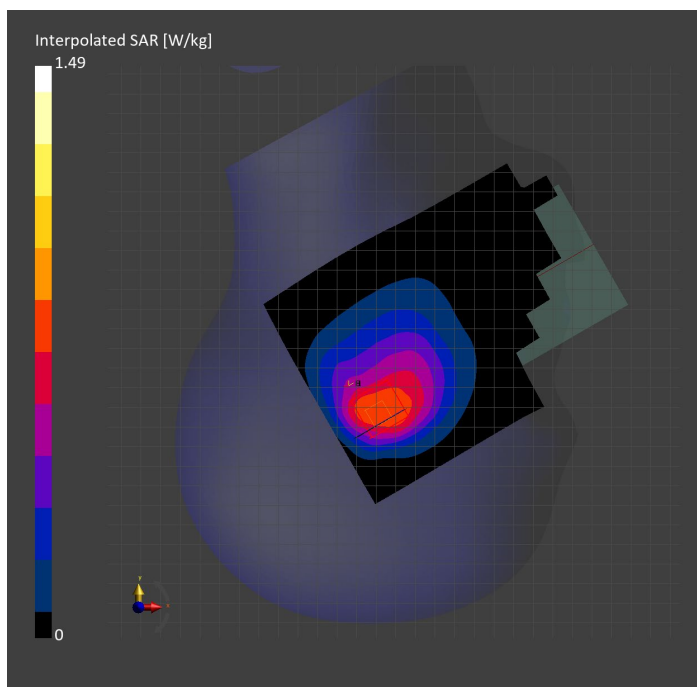
Probe Calibration Date	EX3DV4 - SN3749 2023-01-27	Phantom	Twin-SAM V8.0 (30deg probe tilt)
DAE Calibration Date	DAE4 Sn1357 2023-01-27	TSL Type	HBBL-600-10000
Software Version	16.2.4.2524		

Scan Setup

	Area Scan	Zoom Scan
Grid Extents [mm]	120.0 x 180.0	30.0 x 30.0 x 30.0
Grid Steps [mm]	15.0 x 15.0	6.0 x 6.0 x 1.5
Sensor Surface [mm]	3.0	1.4
Graded Grid	N/A	Yes
M2/M1 [%]		74.8
Dist 3dB Peak [mm]		7.7

Measurement Results

	Area Scan	Zoom Scan
psSAR1g [W/Kg]	0.740	0.771
psSAR10g [W/Kg]	0.501	0.489
Power Drift [dB]	N/A	-0.08



Measurement Report for Band n26: 5G NR (DFT-s-OFDM, 1 RB, 20 MHz, QPSK, 15 kHz) RBPosition:Mid AntennaCfg:SISO, BACK

Exposure Conditions

Band	Band n26	TSL Permittivity	40.1
Frequency [MHz] Channel Number	831.500 166300	TSL Conductivity [S/m]	0.865
Group UID	5G NR FR1 FDD 10931-AAC	Phantom Section TSL	Flat HSL
Conversion Factor	7.83	Test Distance [mm]	5.00

Hardware Setup

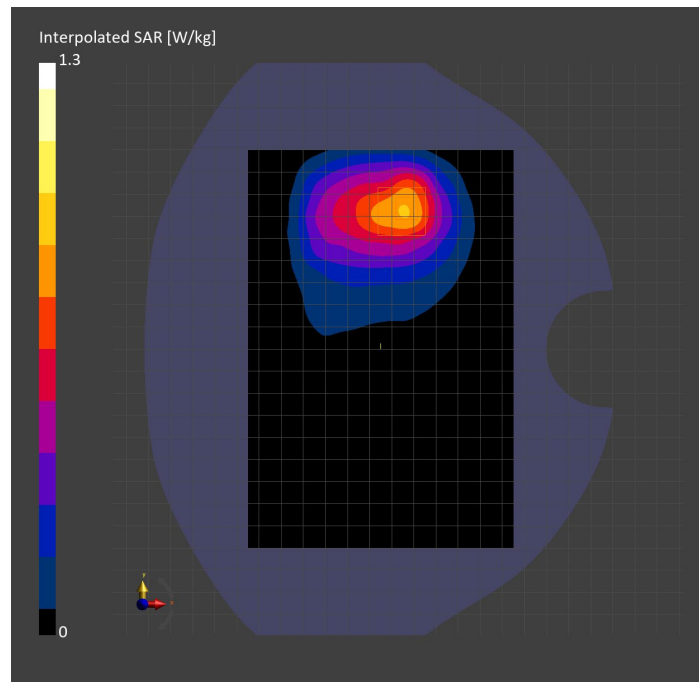
Probe Calibration Date	EX3DV4 - SN3749 2023-01-27	Phantom	Twin-SAM V8.0 (30deg probe tilt)
DAE Calibration Date	DAE4 Sn1357 2023-01-27	TSL Type	HBBL-600-10000
Software Version	16.2.4.2524		

Scan Setup

	Area Scan	Zoom Scan	Secondary Zoom Scan
Grid Extents [mm]	120.0 x 180.0	30.0 x 30.0 x 30.0	30.0 x 30.0 x 30.0
Grid Steps [mm]	15.0 x 15.0	6.0 x 6.0 x 1.5	6.0 x 6.0 x 1.5
Sensor Surface [mm]	3.0	1.4	1.4
Graded Grid	N/A	Yes	Yes
M2/M1 [%]		85.1	85.3
Dist 3dB Peak [mm]		14.0	14.0

Measurement Results

	Area Scan	Zoom Scan	Secondary Zoom Scan
psSAR1g [W/Kg]	0.762	0.770	0.767
psSAR10g [W/Kg]	0.497	0.462	0.459
Power Drift [dB]	N/A	-0.24	-0.35



Measurement Report for Band n30: 5G NR (DFT-s-OFDM, 1 RB, 10 MHz, QPSK, 15 kHz) RBPosition:Mid AntennaCfg:SISO, BACK

Exposure Conditions

Band	Band n30	TSL Permittivity	39.0
Frequency [MHz] Channel Number	2310.000 462000	TSL Conductivity [S/m]	1.72
Group UID	5G NR FR1 FDD 10929-AAD	Phantom Section TSL	Flat HSL
Conversion Factor	7.71	Test Distance [mm]	5.00

Hardware Setup

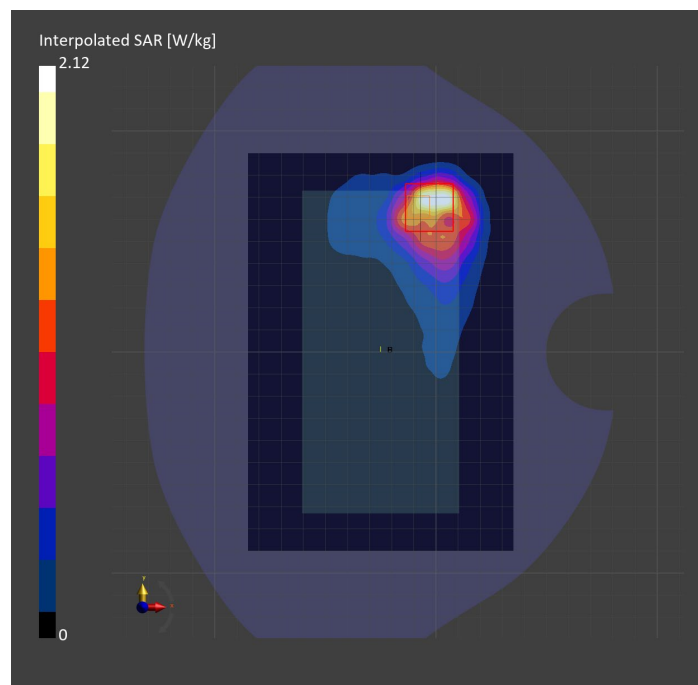
Probe Calibration Date	EX3DV4 - SN7482 2023-04-18	Phantom	Twin-SAM V8.0 (30deg probe tilt)
DAE Calibration Date	DAE4 Sn1380 2023-02-14	TSL Type	HBBL-600-10000
Software Version	16.2.4.2524		

Scan Setup

	Area Scan	Zoom Scan
Grid Extents [mm]	120.0 x 180.0	30.0 x 30.0 x 30.0
Grid Steps [mm]	10.0 x 10.0	4.5 x 4.5 x 1.5
Sensor Surface [mm]	3.0	1.4
Graded Grid	N/A	Yes
M2/M1 [%]		74.0
Dist 3dB Peak [mm]		5.8

Measurement Results

	Area Scan	Zoom Scan
psSAR1g [W/Kg]	0.889	0.791
psSAR10g [W/Kg]	0.426	0.359
Power Drift [dB]	N/A	-0.03



Measurement Report for Band n30: 5G NR (DFT-s-OFDM, 1 RB, 10 MHz, QPSK, 15 kHz) RBPosition:Mid AntennaCfg:SISO, CHEEK

Exposure Conditions

Band	Band n30	TSL Permittivity	38.1
Frequency [MHz] Channel Number	2310.000 462000	TSL Conductivity [S/m]	1.69
Group UID	5G NR FR1 FDD 10929-AAD	Phantom Section TSL	LeftHead HSL
Conversion Factor	7.71	Test Distance [mm]	0.00

Hardware Setup

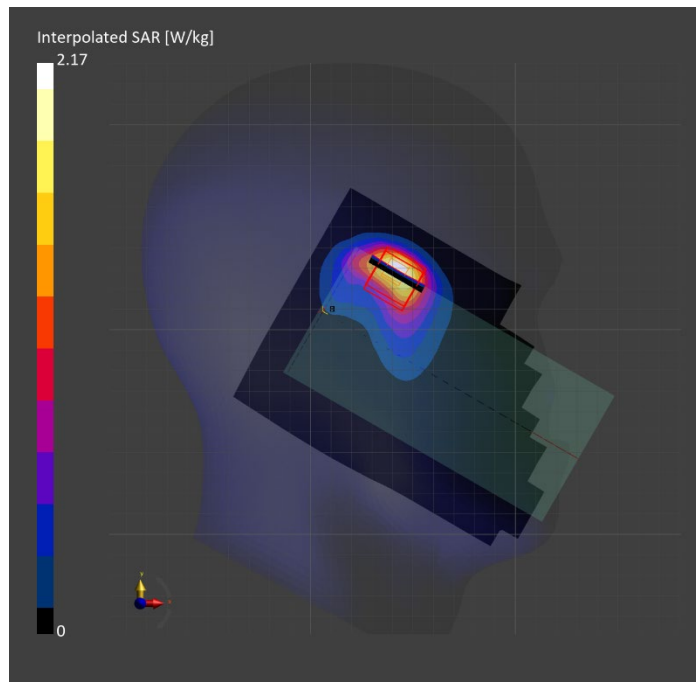
Probe Calibration Date	EX3DV4 - SN7482 2023-04-18	Phantom	Twin-SAM V8.0 (30deg probe tilt)
DAE Calibration Date	DAE4 Sn1380 2023-02-14	TSL Type	HBBL-600-10000
Software Version	16.2.4.2524		

Scan Setup

	Area Scan	Zoom Scan
Grid Extents [mm]	120.0 x 180.0	30.0 x 30.0 x 30.0
Grid Steps [mm]	10.0 x 10.0	5.0 x 5.0 x 1.5
Sensor Surface [mm]	3.0	1.4
Graded Grid	N/A	Yes
M2/M1 [%]		75.7
Dist 3dB Peak [mm]		6.8

Measurement Results

	Area Scan	Zoom Scan
psSAR1g [W/Kg]	0.814	0.885
psSAR10g [W/Kg]	0.402	0.402
Power Drift [dB]	N/A	-0.00



Measurement Report for Band n30: 5G NR (DFT-s-OFDM, 50% RB, 10 MHz, QPSK, 15 kHz) RBPosition:Mid AntennaCfg:SISO, EDGE RIGHT

Exposure Conditions

Band	Band n30	TSL Permittivity	39.3
Frequency [MHz] Channel Number	2310.000 462000	TSL Conductivity [S/m]	1.65
Group UID	5G NR FR1 FDD 10937-AAD	Phantom Section TSL	Flat HSL
Conversion Factor	7.71	Test Distance [mm]	5.00

Hardware Setup

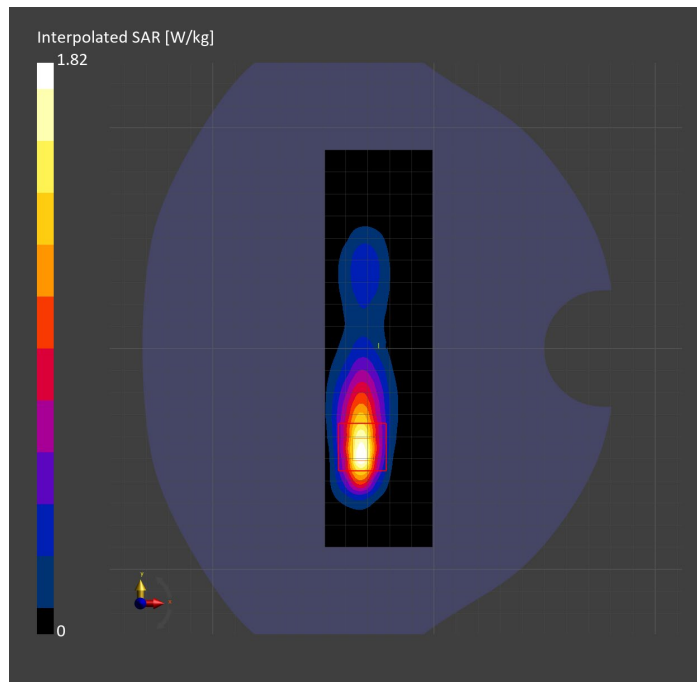
Probe Calibration Date	EX3DV4 - SN7482 2023-04-18	Phantom	Twin-SAM V8.0 (30deg probe tilt)
DAE Calibration Date	DAE4 Sn1380 2023-02-14	TSL Type	HBBL-600-10000
Software Version	16.2.4.2524		

Scan Setup

	Area Scan	Zoom Scan
Grid Extents [mm]	48.6 x 180.0	30.0 x 30.0 x 30.0
Grid Steps [mm]	8.1 x 10.0	5.0 x 5.0 x 1.5
Sensor Surface [mm]	3.0	1.4
Graded Grid	N/A	Yes
M2/M1 [%]		76.4
Dist 3dB Peak [mm]		7.0

Measurement Results

	Area Scan	Zoom Scan
psSAR1g [W/Kg]	0.739	0.753
psSAR10g [W/Kg]	0.321	0.318
Power Drift [dB]	N/A	-0.01



Measurement Report for Band n41: 5G NR (DFT-s-OFDM, 50% RB, 100 MHz, QPSK, 30 kHz) RBPosition:Mid AntennaCfg:SISO, BACK

Exposure Conditions

Band	Band n41	TSL Permittivity	37.2
Frequency [MHz] Channel Number	2592.990 518598	TSL Conductivity [S/m]	1.98
Group UID	5G NR FR1 TDD 10917-AAD	Phantom Section TSL	Flat HSL
Conversion Factor	7.32	Test Distance [mm]	5.00

Hardware Setup

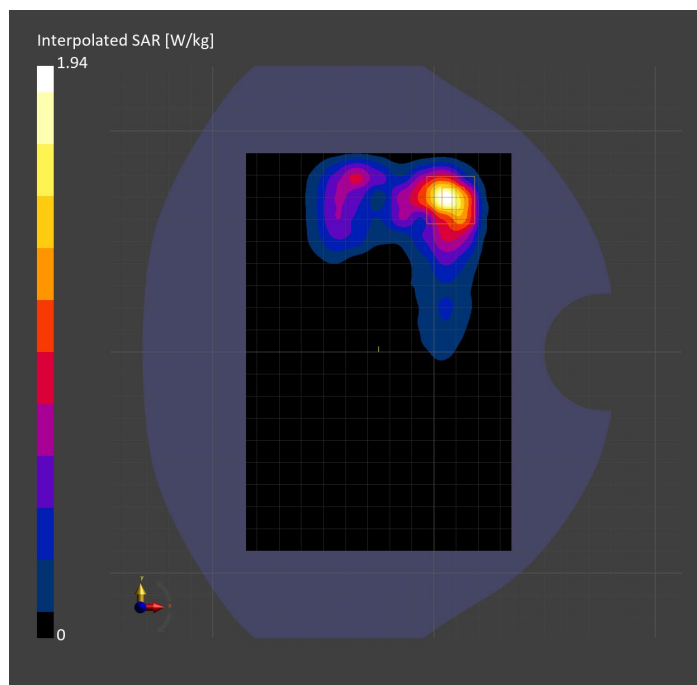
Probe Calibration Date	EX3DV4 - SN3885 2022-09-20	Phantom	Twin-SAM V5.0 (30deg probe tilt)
DAE Calibration Date	DAE4 Sn1548 2023-02-14	TSL Type	HBBL-600-10000
Software Version	16.2.4.2524		

Scan Setup

	Area Scan	Zoom Scan
Grid Extents [mm]	120.0 x 180.0	30.0 x 30.0 x 30.0
Grid Steps [mm]	10.0 x 10.0	5.0 x 5.0 x 1.5
Sensor Surface [mm]	3.0	1.4
Graded Grid	N/A	Yes
M2/M1 [%]		78.1
Dist 3dB Peak [mm]		5.7

Measurement Results

	Area Scan	Zoom Scan
psSAR1g [W/Kg]	0.767	0.771
psSAR10g [W/Kg]	0.335	0.295
Power Drift [dB]	N/A	0.02



Measurement Report for Band n41: 5G NR (DFT-s-OFDM, 50% RB, 100 MHz, QPSK, 30 kHz) RBPosition:Mid AntennaCfg:SISO, EDGE LEFT

Exposure Conditions

Band	Band n41	TSL Permittivity	37.3
Frequency [MHz] Channel Number	2592.990 518598	TSL Conductivity [S/m]	2.02
Group UID	5G NR FR1 TDD 10917-AAD	Phantom Section TSL	Flat HSL
Conversion Factor	7.32	Test Distance [mm]	5.00

Hardware Setup

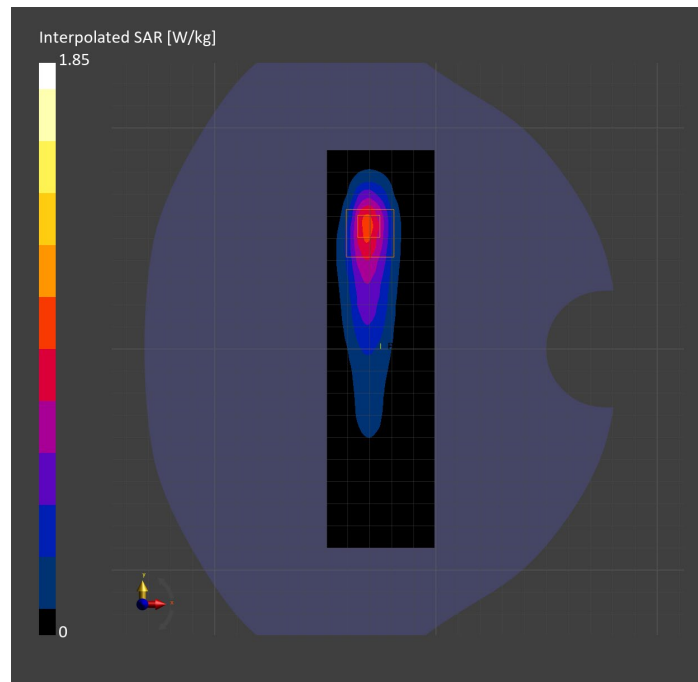
Probe Calibration Date	EX3DV4 - SN3885 2022-09-20	Phantom	Twin-SAM V5.0 (30deg probe tilt)
DAE Calibration Date	DAE4 Sn1548 2023-02-14	TSL Type	HBBL-600-10000
Software Version	16.2.4.2524		

Scan Setup

	Area Scan	Zoom Scan
Grid Extents [mm]	48.6 x 180.0	30.0 x 30.0 x 30.0
Grid Steps [mm]	8.1 x 10.0	5.0 x 5.0 x 1.5
Sensor Surface [mm]	3.0	1.4
Graded Grid	N/A	Yes
M2/M1 [%]		77.2
Dist 3dB Peak [mm]		7.0

Measurement Results

	Area Scan	Zoom Scan
psSAR1g [W/Kg]	0.736	0.772
psSAR10g [W/Kg]	0.329	0.325
Power Drift [dB]	N/A	0.00



Measurement Report for Band n41: 5G NR (DFT-s-OFDM, 1 RB, 100 MHz, QPSK, 30 kHz) RBPosition:Mid AntennaCfg:SISO, CHEEK

Exposure Conditions

Band	Band n41	TSL Permittivity	37.3
Frequency [MHz] Channel Number	2592.990 518598	TSL Conductivity [S/m]	2.02
Group UID	5G NR FR1 TDD 10866-AAF	Phantom Section TSL	LeftHead HSL
Conversion Factor	7.32	Test Distance [mm]	0.00

Hardware Setup

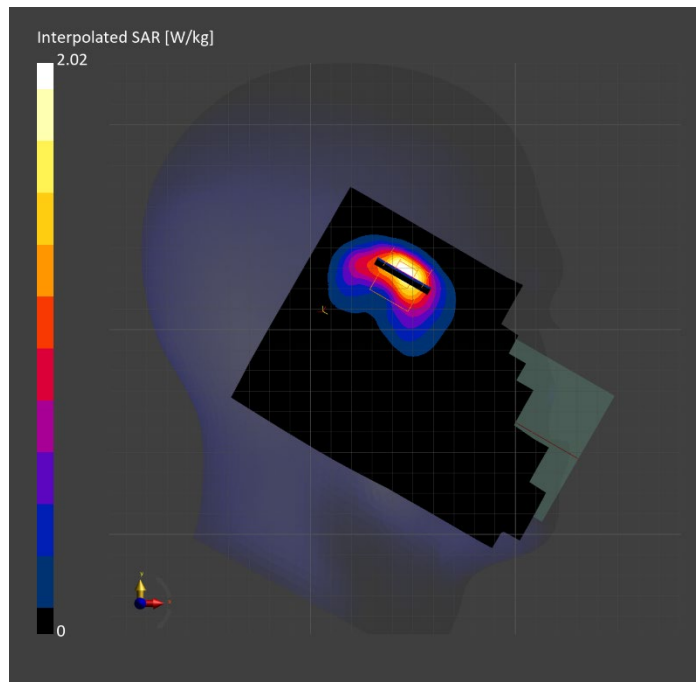
Probe Calibration Date	EX3DV4 - SN3885 2022-09-20	Phantom	Twin-SAM V5.0 (30deg probe tilt)
DAE Calibration Date	DAE4 Sn1548 2023-02-14	TSL Type	HBBL-600-10000
Software Version	16.2.4.2524		

Scan Setup

	Area Scan	Zoom Scan
Grid Extents [mm]	120.0 x 180.0	30.0 x 30.0 x 30.0
Grid Steps [mm]	10.0 x 10.0	5.0 x 5.0 x 1.5
Sensor Surface [mm]	3.0	1.4
Graded Grid	N/A	Yes
M2/M1 [%]		73.3
Dist 3dB Peak [mm]		5.5

Measurement Results

	Area Scan	Zoom Scan
psSAR1g [W/Kg]	0.641	0.743
psSAR10g [W/Kg]	0.292	0.296
Power Drift [dB]	N/A	-0.10



Measurement Report for Band n48: 5G NR (DFT-s-OFDM, 50% RB, 40 MHz, QPSK, 30 kHz) RBPosition:Mid AntennaCfg:SISO, EDGE RIGHT

Exposure Conditions

Band	Band n48	TSL Permittivity	36.9
Frequency [MHz] Channel Number	3643.315 642888	TSL Conductivity [S/m]	2.92
Group UID	5G NR FR1 TDD 10913-AAD	Phantom Section TSL	Flat HSL
Conversion Factor	6.92	Test Distance [mm]	5.00

Hardware Setup

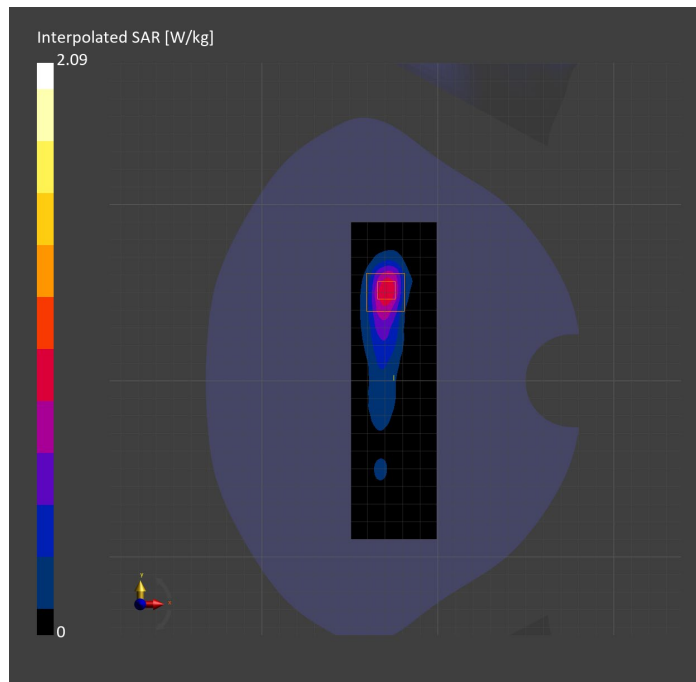
Probe Calibration Date	EX3DV4 - SN7335 2023-01-26	Phantom	Twin-SAM V8.0 (30deg probe tilt)
DAE Calibration Date	DAE4ip Sn1619 2023-04-18	TSL Type	HBBL-600-10000
Software Version	16.2.4.2524		

Scan Setup

	Area Scan	Zoom Scan
Grid Extents [mm]	48.6 x 180.0	28.0 x 28.0 x 28.0
Grid Steps [mm]	8.1 x 10.0	5.0 x 5.0 x 1.4
Sensor Surface [mm]	3.0	1.4
Graded Grid	N/A	Yes
M2/M1 [%]		73.8
Dist 3dB Peak [mm]		7.3

Measurement Results

	Area Scan	Zoom Scan
psSAR1g [W/Kg]	0.739	0.771
psSAR10g [W/Kg]	0.293	0.291
Power Drift [dB]	N/A	-0.05



Measurement Report for Band n48: 5G NR (DFT-s-OFDM, 50% RB, 40 MHz, QPSK, 30 kHz) RBPosition:Mid AntennaCfg:SISO, CHEEK

Exposure Conditions

Band	Band n48	TSL Permittivity	37.8
Frequency [MHz] Channel Number	3643.315 642888	TSL Conductivity [S/m]	3.11
Group UID	5G NR FR1 TDD 10913-AAD	Phantom Section TSL	RightHead HSL
Conversion Factor	6.66	Test Distance [mm]	0.00

Hardware Setup

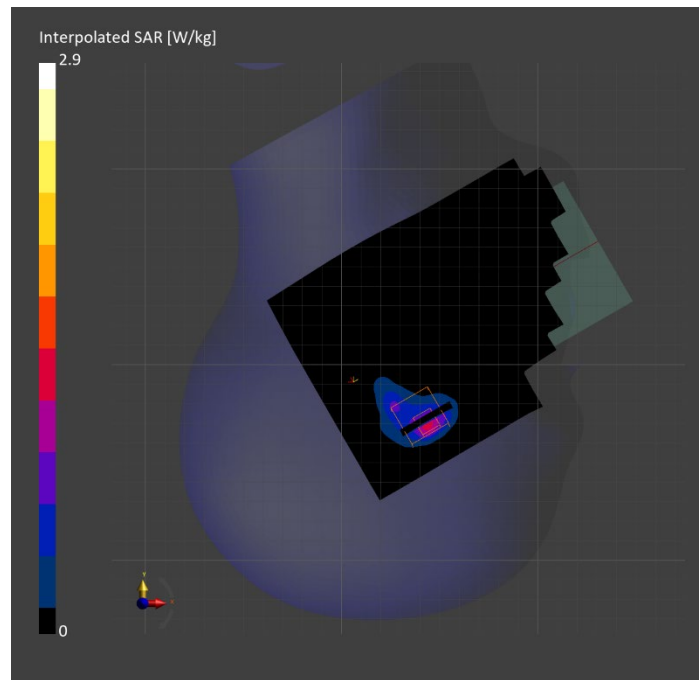
Probe Calibration Date	EX3DV4 - SN3990 2023-02-17	Phantom	Twin-SAM V5.0 (30deg probe tilt)
DAE Calibration Date	DAE4 Sn1545 2023-02-14	TSL Type	HBBL-600-10000
Software Version	16.2.4.2524		

Scan Setup

	Area Scan	Zoom Scan
Grid Extents [mm]	120.0 x 180.0	28.0 x 28.0 x 28.0
Grid Steps [mm]	10.0 x 10.0	4.2 x 4.2 x 1.4
Sensor Surface [mm]	3.0	1.4
Graded Grid	N/A	Yes
M2/M1 [%]		70.0
Dist 3dB Peak [mm]		5.1

Measurement Results

	Area Scan	Zoom Scan
psSAR1g [W/Kg]	0.811	0.895
psSAR10g [W/Kg]	0.305	0.307
Power Drift [dB]	N/A	-0.08



Measurement Report for Band n48: 5G NR (DFT-s-OFDM, 1 RB, 40 MHz, QPSK, 30 kHz) RBPosition:Mid AntennaCfg:SISO, BACK

Exposure Conditions

Band	Band n48	TSL Permittivity	38.5
Frequency [MHz] Channel Number	3643.315 642888	TSL Conductivity [S/m]	2.95
Group UID	5G NR FR1 TDD 10903-AAD	Phantom Section TSL	Flat HSL
Conversion Factor	6.92	Test Distance [mm]	5.00

Hardware Setup

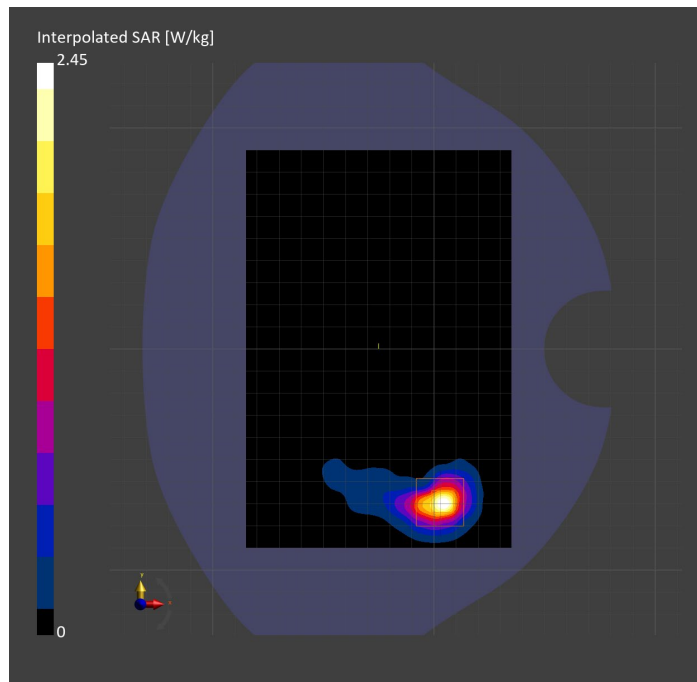
Probe Calibration Date	EX3DV4 - SN7335 2023-01-26	Phantom	Twin-SAM V8.0 (30deg probe tilt)
DAE Calibration Date	DAE4ip Sn1619 2023-04-18	TSL Type	HBBL-600-10000
Software Version	16.2.4.2524		

Scan Setup

	Area Scan	Zoom Scan
Grid Extents [mm]	120.0 x 180.0	30.0 x 30.0 x 28.0
Grid Steps [mm]	10.0 x 10.0	5.0 x 5.0 x 1.4
Sensor Surface [mm]	3.0	1.4
Graded Grid	N/A	Yes
M2/M1 [%]		74.1
Dist 3dB Peak [mm]		6.8

Measurement Results

	Area Scan	Zoom Scan
psSAR1g [W/Kg]	0.814	0.885
psSAR10g [W/Kg]	0.280	0.304
Power Drift [dB]	N/A	0.12



Measurement Report for Band n53: 5G NR (DFT-s-OFDM, 1 RB, 10 MHz, QPSK, 30 kHz) RBPosition:Mid AntennaCfg:SISO, CHEEK

Exposure Conditions

Band	Band n53	TSL Permittivity	40.8
Frequency [MHz] Channel Number	2489.200 497840	TSL Conductivity [S/m]	1.90
Group UID	5G NR FR1 TDD 10898-AAC	Phantom Section TSL	RightHead HSL
Conversion Factor	7.64	Test Distance [mm]	0.00

Hardware Setup

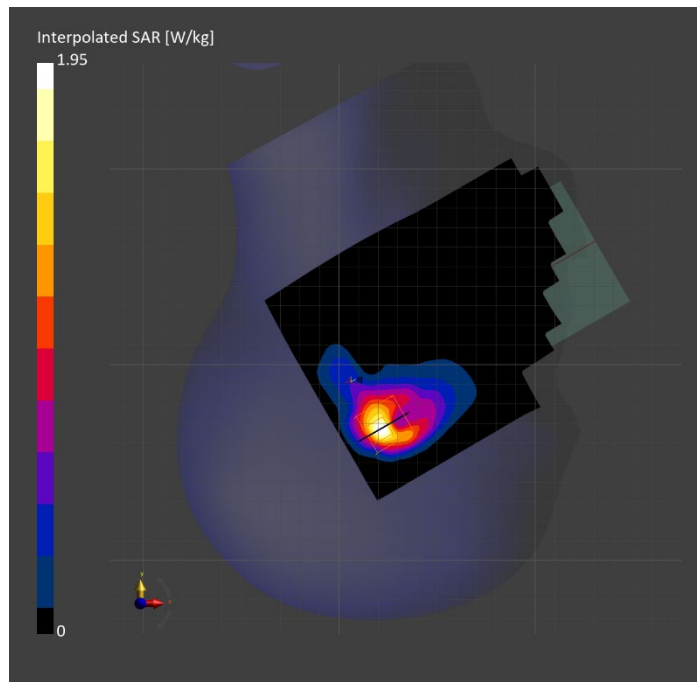
Probe Calibration Date	EX3DV4 - SN7587 2023-04-18	Phantom	Twin-SAM V8.0 (30deg probe tilt)
DAE Calibration Date	DAE4 Sn1239 2023-03-16	TSL Type	HBBL-600-10000
Software Version	16.2.4.2524		

Scan Setup

	Area Scan	Zoom Scan
Grid Extents [mm]	120.0 x 180.0	30.0 x 30.0 x 30.0
Grid Steps [mm]	10.0 x 10.0	5.0 x 5.0 x 1.5
Sensor Surface [mm]	3.0	1.4
Graded Grid	N/A	Yes
M2/M1 [%]		75.0
Dist 3dB Peak [mm]		6.1

Measurement Results

	Area Scan	Zoom Scan
psSAR1g [W/Kg]	0.796	0.802
psSAR10g [W/Kg]	0.361	0.361
Power Drift [dB]	N/A	-0.00



Measurement Report for Band n53: 5G NR (DFT-s-OFDM, 1 RB, 10 MHz, QPSK, 30 kHz) RBPosition:Mid AntennaCfg:SISO, BACK

Exposure Conditions

Band	Band n53	TSL Permittivity	39.3
Frequency [MHz] Channel Number	2489.200 497840	TSL Conductivity [S/m]	1.77
Group UID	5G NR FR1 TDD 10898-AAC	Phantom Section TSL	Flat HSL
Conversion Factor	7.64	Test Distance [mm]	5.00

Hardware Setup

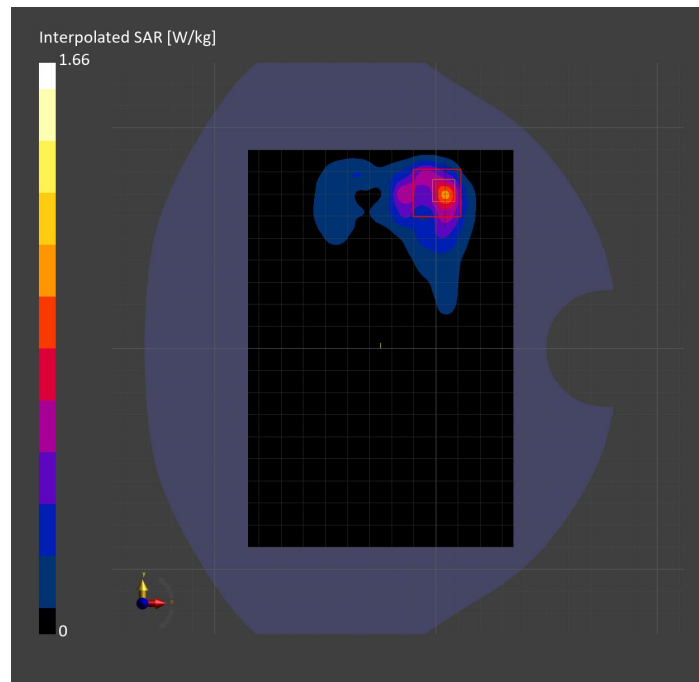
Probe Calibration Date	EX3DV4 - SN7587 2023-04-18	Phantom	Twin-SAM V8.0 (30deg probe tilt)
DAE Calibration Date	DAE4 Sn1239 2023-03-16	TSL Type	HBBL-600-10000
Software Version	16.2.4.2524		

Scan Setup

	Area Scan	Zoom Scan	Secondary Zoom Scan
Grid Extents [mm]	120.0 x 180.0	30.0 x 30.0 x 30.0	30.0 x 30.0 x 30.0
Grid Steps [mm]	10.0 x 10.0	5.0 x 5.0 x 1.5	5.0 x 5.0 x 1.5
Sensor Surface [mm]	3.0	1.4	1.4
Graded Grid	N/A	Yes	Yes
M2/M1 [%]		78.3	78.4
Dist 3dB Peak [mm]		5.0	5.0

Measurement Results

	Area Scan	Zoom Scan	Secondary Zoom Scan
psSAR1g [W/Kg]	0.673	0.690	0.694
psSAR10g [W/Kg]	0.298	0.280	0.281
Power Drift [dB]	N/A	-0.08	-0.36



Measurement Report for Band n53: 5G NR (DFT-s-OFDM, 1 RB, 10 MHz, QPSK, 30 kHz) RBPosition:Mid AntennaCfg:SISO, EDGE LEFT

Exposure Conditions

Band	Band n53	TSL Permittivity	39.3
Frequency [MHz] Channel Number	2489.200 497840	TSL Conductivity [S/m]	1.77
Group UID	5G NR FR1 TDD 10898-AAC	Phantom Section TSL	Flat HSL
Conversion Factor	7.64	Test Distance [mm]	5.00

Hardware Setup

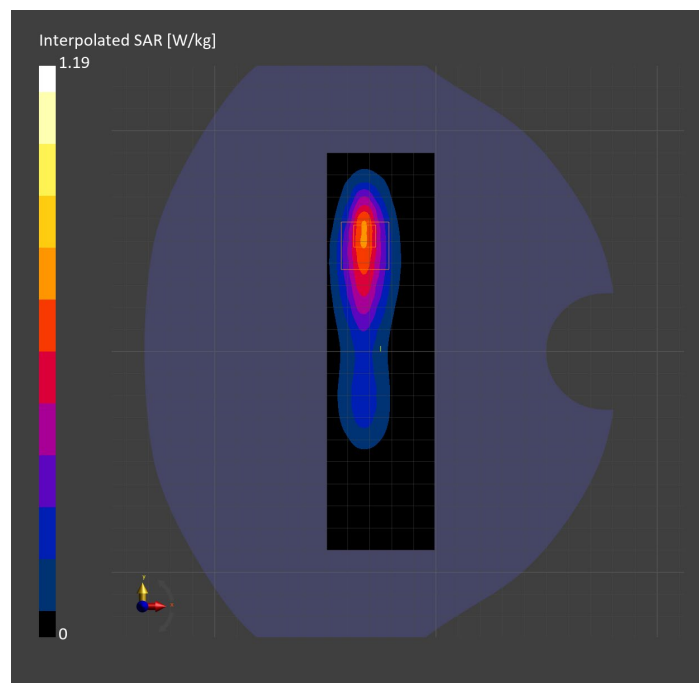
Probe Calibration Date	EX3DV4 - SN7587 2023-04-18	Phantom	Twin-SAM V8.0 (30deg probe tilt)
DAE Calibration Date	DAE4 Sn1239 2023-03-16	TSL Type	HBBL-600-10000
Software Version	16.2.4.2524		

Scan Setup

	Area Scan	Zoom Scan
Grid Extents [mm]	48.6 x 180.0	30.0 x 30.0 x 30.0
Grid Steps [mm]	8.1 x 10.0	5.0 x 5.0 x 1.5
Sensor Surface [mm]	3.0	1.4
Graded Grid	N/A	Yes
M2/M1 [%]		79.0
Dist 3dB Peak [mm]		7.0

Measurement Results

	Area Scan	Zoom Scan
psSAR1g [W/Kg]	0.535	0.552
psSAR10g [W/Kg]	0.248	0.256
Power Drift [dB]	N/A	0.05



Measurement Report for Band n66: 5G NR (DFT-s-OFDM, 1 RB, 40 MHz, QPSK, 15 kHz) RBPosition:Mid AntennaCfg:SISO, EDGE BOTTOM

Exposure Conditions

Band	Band n66	TSL Permittivity	41.8
Frequency [MHz] Channel Number	1745.000 349000	TSL Conductivity [S/m]	1.30
Group UID	5G NR FR1 FDD 10934-AAC	Phantom Section TSL	Flat HSL
Conversion Factor	8.98	Test Distance [mm]	5.00

Hardware Setup

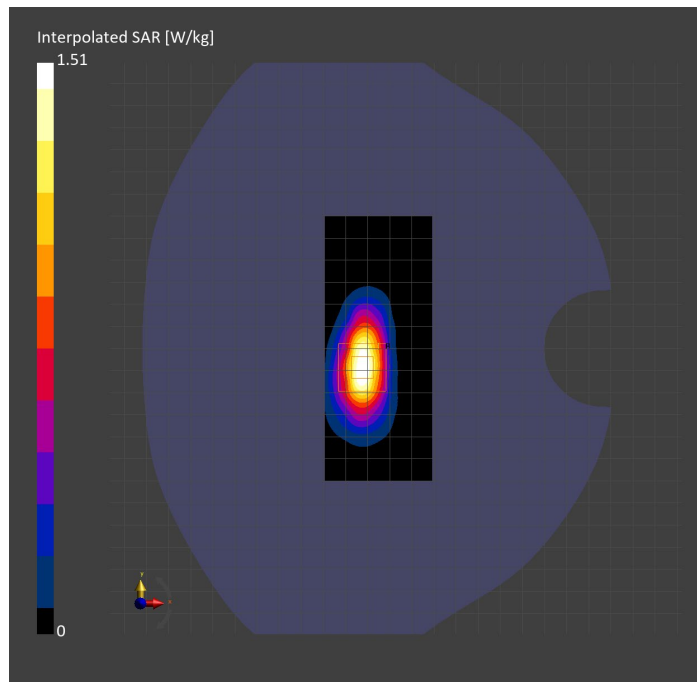
Probe Calibration Date	EX3DV4 - SN3989 2023-01-26	Phantom	Twin-SAM V8.0 (30deg probe tilt)
DAE Calibration Date	DAE4 Sn1257 2022-09-20	TSL Type	HBBL-600-10000
Software Version	16.2.4.2524		

Scan Setup

	Area Scan	Zoom Scan
Grid Extents [mm]	48.6 x 120.0	30.0 x 30.0 x 30.0
Grid Steps [mm]	8.1 x 15.0	6.0 x 6.0 x 1.5
Sensor Surface [mm]	3.0	1.4
Graded Grid	N/A	Yes
M2/M1 [%]		81.4
Dist 3dB Peak [mm]		8.4

Measurement Results

	Area Scan	Zoom Scan
psSAR1g [W/Kg]	0.784	0.786
psSAR10g [W/Kg]	0.385	0.386
Power Drift [dB]	N/A	0.03



Measurement Report for Band n66: 5G NR (DFT-s-OFDM, 1 RB, 40 MHz, QPSK, 15 kHz) RBPosition:Mid AntennaCfg:SISO, BACK

Exposure Conditions

Band	Band n66	TSL Permittivity	39.1
Frequency [MHz] Channel Number	1745.000 349000	TSL Conductivity [S/m]	1.31
Group UID	5G NR FR1 FDD 10934-AAC	Phantom Section TSL	Flat HSL
Conversion Factor	8.98	Test Distance [mm]	5.00

Hardware Setup

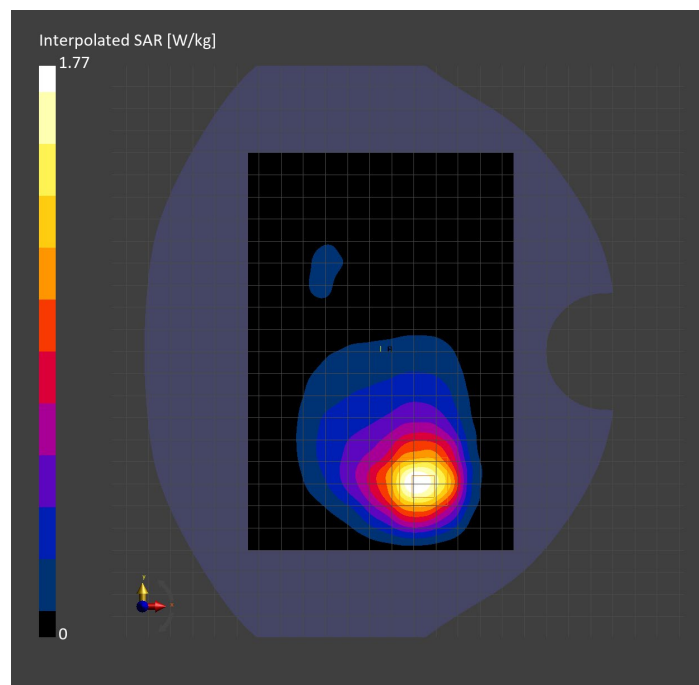
Probe Calibration Date	EX3DV4 - SN3989 2023-01-26	Phantom	Twin-SAM V8.0 (30deg probe tilt)
DAE Calibration Date	DAE4 Sn1257 2022-09-20	TSL Type	HBBL-600-10000
Software Version	16.2.4.2524		

Scan Setup

	Area Scan	Zoom Scan
Grid Extents [mm]	120.0 x 180.0	30.0 x 30.0 x 30.0
Grid Steps [mm]	15.0 x 15.0	6.0 x 6.0 x 1.5
Sensor Surface [mm]	3.0	1.4
Graded Grid	N/A	Yes
M2/M1 [%]		79.8
Dist 3dB Peak [mm]		10.8

Measurement Results

	Area Scan	Zoom Scan
psSAR1g [W/Kg]	0.794	0.849
psSAR10g [W/Kg]	0.448	0.444
Power Drift [dB]	N/A	-0.00



Measurement Report for Band n66: 5G NR (DFT-s-OFDM, 50% RB, 40 MHz, QPSK, 15 kHz) RBPosition:Mid AntennaCfg:SISO, CHEEK

Exposure Conditions

Band	Band n66	TSL Permittivity	41.0
Frequency [MHz] Channel Number	1745.000 349000	TSL Conductivity [S/m]	1.32
Group UID	5G NR FR1 FDD 10942-AAC	Phantom Section TSL	LeftHead HSL
Conversion Factor	8.66	Test Distance [mm]	0.00

Hardware Setup

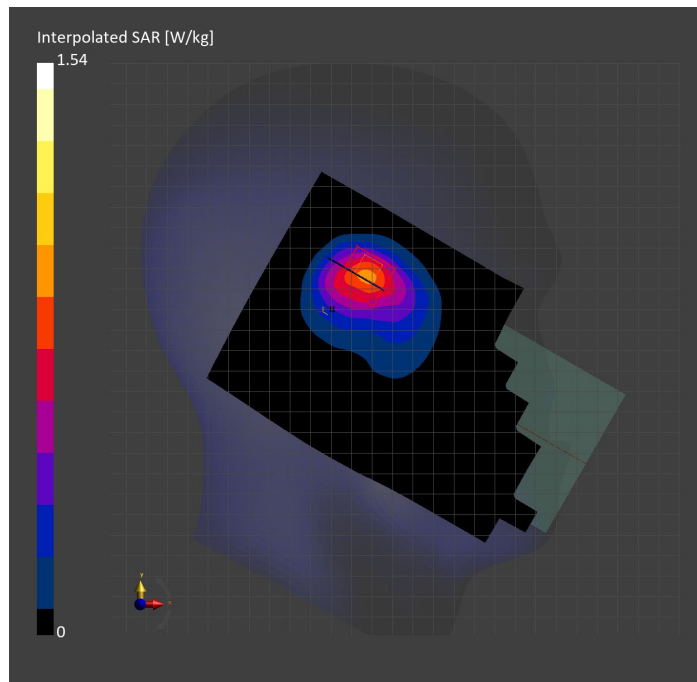
Probe Calibration Date	EX3DV4 - SN7569 2023-04-18	Phantom	Twin-SAM V8.0 (30deg probe tilt)
DAE Calibration Date	DAE4 Sn1547 2023-04-18	TSL Type	HBBL-600-10000
Software Version	16.2.4.2524		

Scan Setup

	Area Scan	Zoom Scan
Grid Extents [mm]	120.0 x 210.0	30.0 x 30.0 x 30.0
Grid Steps [mm]	15.0 x 15.0	5.3 x 5.3 x 1.5
Sensor Surface [mm]	3.0	1.4
Graded Grid	N/A	Yes
M2/M1 [%]		74.9
Dist 3dB Peak [mm]		7.5

Measurement Results

	Area Scan	Zoom Scan
psSAR1g [W/Kg]	0.752	0.724
psSAR10g [W/Kg]	0.427	0.405
Power Drift [dB]	N/A	0.01



Measurement Report for Band n70: 5G NR (DFT-s-OFDM, 50% RB, 15 MHz, QPSK, 15 kHz) RBPosition:Mid AntennaCfg:SISO, EDGE BOTTOM

Exposure Conditions

Band	Band n70	TSL Permittivity	41.8
Frequency [MHz] Channel Number	1702.500 340500	TSL Conductivity [S/m]	1.28
Group UID	5G NR FR1 FDD 10938-AAC	Phantom Section TSL	Flat HSL
Conversion Factor	8.98	Test Distance [mm]	5.00

Hardware Setup

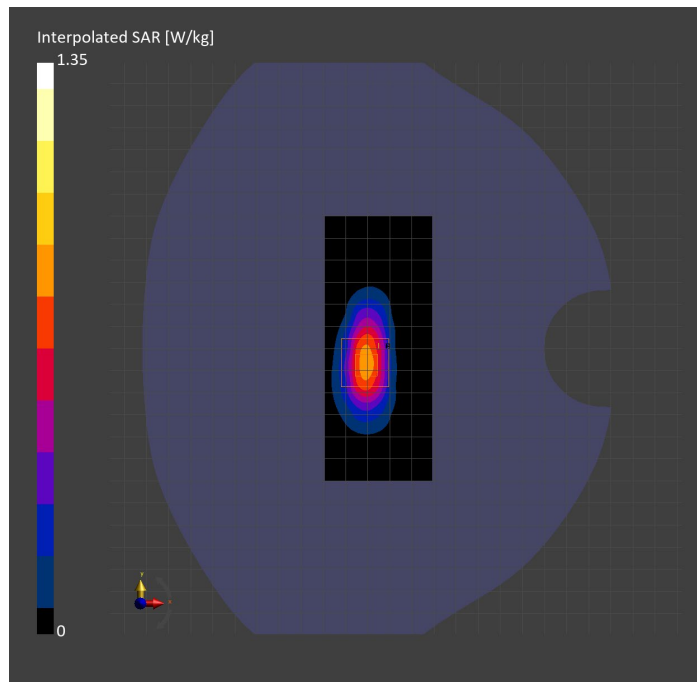
Probe Calibration Date	EX3DV4 - SN3989 2023-01-26	Phantom	Twin-SAM V8.0 (30deg probe tilt)
DAE Calibration Date	DAE4 Sn1257 2022-09-20	TSL Type	HBBL-600-10000
Software Version	16.2.4.2524		

Scan Setup

	Area Scan	Zoom Scan
Grid Extents [mm]	48.6 x 120.0	30.0 x 30.0 x 30.0
Grid Steps [mm]	8.1 x 15.0	6.0 x 6.0 x 1.5
Sensor Surface [mm]	3.0	1.4
Graded Grid	N/A	Yes
M2/M1 [%]		82.1
Dist 3dB Peak [mm]		7.3

Measurement Results

	Area Scan	Zoom Scan
psSAR1g [W/Kg]	0.689	0.699
psSAR10g [W/Kg]	0.338	0.338
Power Drift [dB]	N/A	0.01



Measurement Report for Band n70: 5G NR (DFT-s-OFDM, 1 RB, 15 MHz, QPSK, 15 kHz) RBPosition:Mid AntennaCfg:SISO, TILT

Exposure Conditions

Band	Band n70	TSL Permittivity	38.4
Frequency [MHz] Channel Number	1702.500 340500	TSL Conductivity [S/m]	1.29
Group UID	5G NR FR1 FDD 10930-AAC	Phantom Section TSL	RightHead HSL
Conversion Factor	8.66	Test Distance [mm]	0.00

Hardware Setup

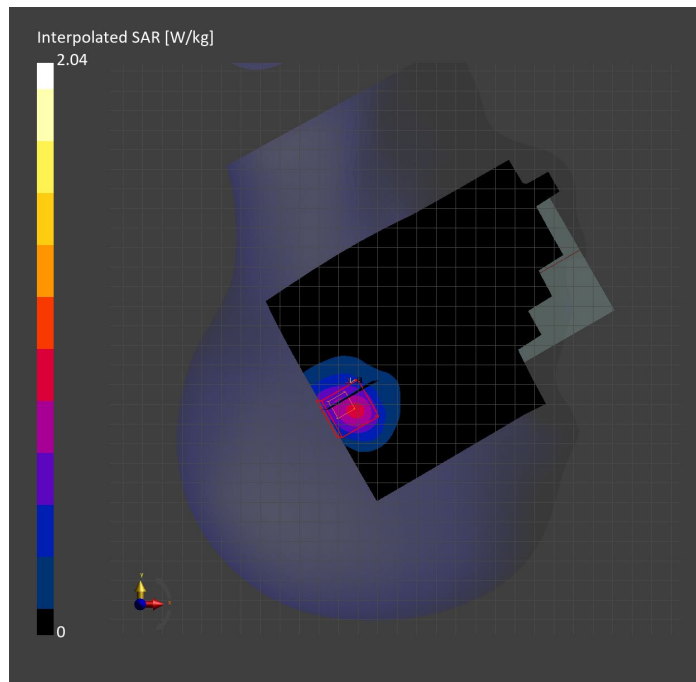
Probe Calibration Date	EX3DV4 - SN7569 2023-04-18	Phantom	Twin-SAM V8.0 (30deg probe tilt)
DAE Calibration Date	DAE4 Sn1547 2023-04-18	TSL Type	HBBL-600-10000
Software Version	16.2.4.2524		

Scan Setup

	Area Scan	Zoom Scan
Grid Extents [mm]	120.0 x 180.0	30.0 x 30.0 x 30.0
Grid Steps [mm]	15.0 x 15.0	6.0 x 6.0 x 1.5
Sensor Surface [mm]	3.0	1.4
Graded Grid	N/A	Yes
M2/M1 [%]		74.6
Dist 3dB Peak [mm]		6.0

Measurement Results

	Area Scan	Zoom Scan
psSAR1g [W/Kg]	0.717	0.908
psSAR10g [W/Kg]	0.389	0.423
Power Drift [dB]	N/A	-0.02



Measurement Report for Band n70: 5G NR (DFT-s-OFDM, 1 RB, 15 MHz, QPSK, 15 kHz) RBPosition:Mid AntennaCfg:SISO, BACK

Exposure Conditions

Band	Band n70	TSL Permittivity	39.1
Frequency [MHz] Channel Number	1702.500 340500	TSL Conductivity [S/m]	1.29
Group UID	5G NR FR1 FDD 10930-AAC	Phantom Section TSL	Flat HSL
Conversion Factor	8.98	Test Distance [mm]	5.00

Hardware Setup

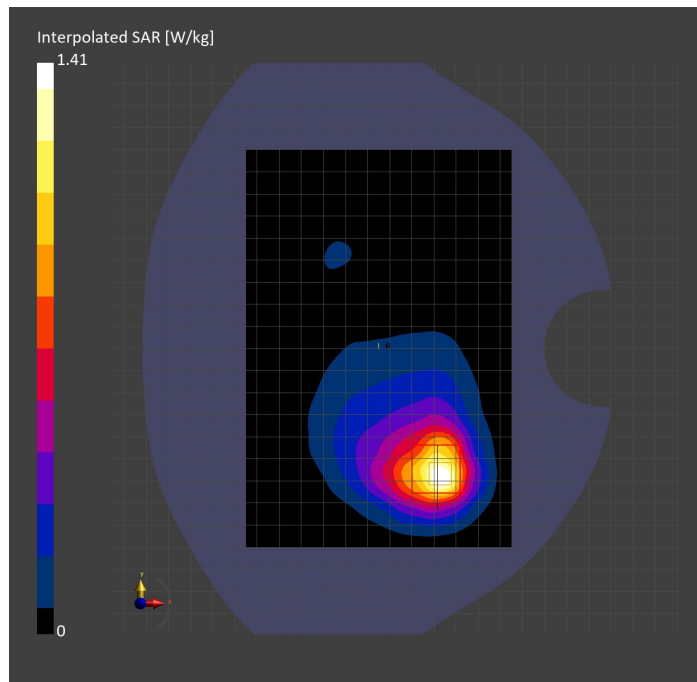
Probe Calibration Date	EX3DV4 - SN3989 2023-01-26	Phantom	Twin-SAM V8.0 (30deg probe tilt)
DAE Calibration Date	DAE4 Sn1257 2022-09-20	TSL Type	HBBL-600-10000
Software Version	16.2.4.2524		

Scan Setup

	Area Scan	Zoom Scan
Grid Extents [mm]	120.0 x 180.0	30.0 x 30.0 x 30.0
Grid Steps [mm]	15.0 x 15.0	6.0 x 6.0 x 1.5
Sensor Surface [mm]	3.0	1.4
Graded Grid	N/A	Yes
M2/M1 [%]		78.4
Dist 3dB Peak [mm]		11.4

Measurement Results

	Area Scan	Zoom Scan
psSAR1g [W/Kg]	0.691	0.697
psSAR10g [W/Kg]	0.378	0.370
Power Drift [dB]	N/A	-0.09



Measurement Report for Band n71: 5G NR (DFT-s-OFDM, 50% RB, 20 MHz, QPSK, 15 kHz) RBPosition:Mid AntennaCfg:SISO, EDGE RIGHT

Exposure Conditions

Band	Band n71	TSL Permittivity	43.4
Frequency [MHz] Channel Number	680.500 136100	TSL Conductivity [S/m]	0.854
Group UID	5G NR FR1 FDD 10939-AAC	Phantom Section TSL	Flat HSL
Conversion Factor	10.62	Test Distance [mm]	5.00

Hardware Setup

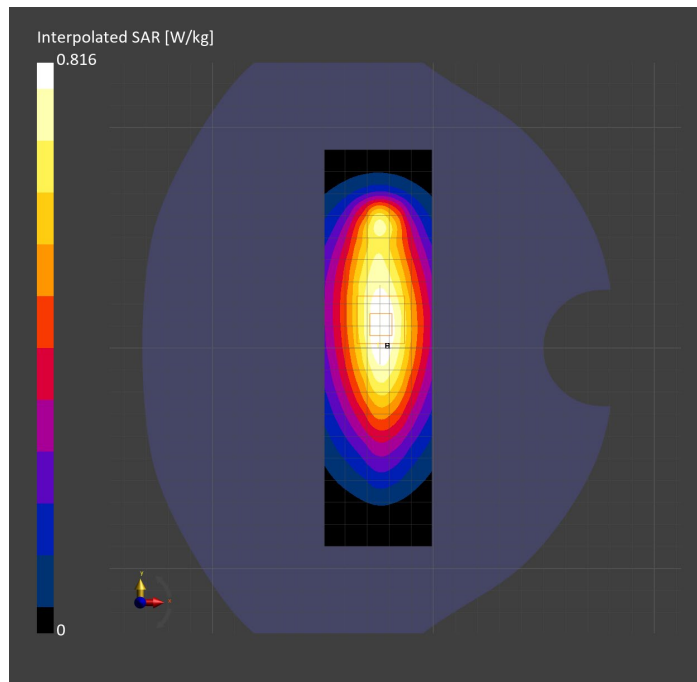
Probe Calibration Date	EX3DV4 - SN7589 2023-04-18	Phantom	Twin-SAM V5.0 (30deg probe tilt)
DAE Calibration Date	DAE4 Sn1544 2023-01-24	TSL Type	HBBL-600-10000
Software Version	16.2.4.2524		

Scan Setup

	Area Scan	Zoom Scan
Grid Extents [mm]	48.6 x 180.0	30.0 x 30.0 x 30.0
Grid Steps [mm]	8.1 x 15.0	6.0 x 6.0 x 1.5
Sensor Surface [mm]	3.0	1.4
Graded Grid	N/A	Yes
M2/M1 [%]		85.8
Dist 3dB Peak [mm]		> 15.0

Measurement Results

	Area Scan	Zoom Scan
psSAR1g [W/Kg]	0.514	0.517
psSAR10g [W/Kg]	0.346	0.348
Power Drift [dB]	N/A	0.05



Measurement Report for Band n71: 5G NR (DFT-s-OFDM, 50% RB, 20 MHz, QPSK, 15 kHz) RBPosition:Mid AntennaCfg:SISO, CHEEK

Exposure Conditions

Band	Band n71	TSL Permittivity	43.5
Frequency [MHz] Channel Number	680.500 136100	TSL Conductivity [S/m]	0.852
Group UID	5G NR FR1 FDD 10939-AAC	Phantom Section TSL	RightHead HSL
Conversion Factor	8.93	Test Distance [mm]	0.00

Hardware Setup

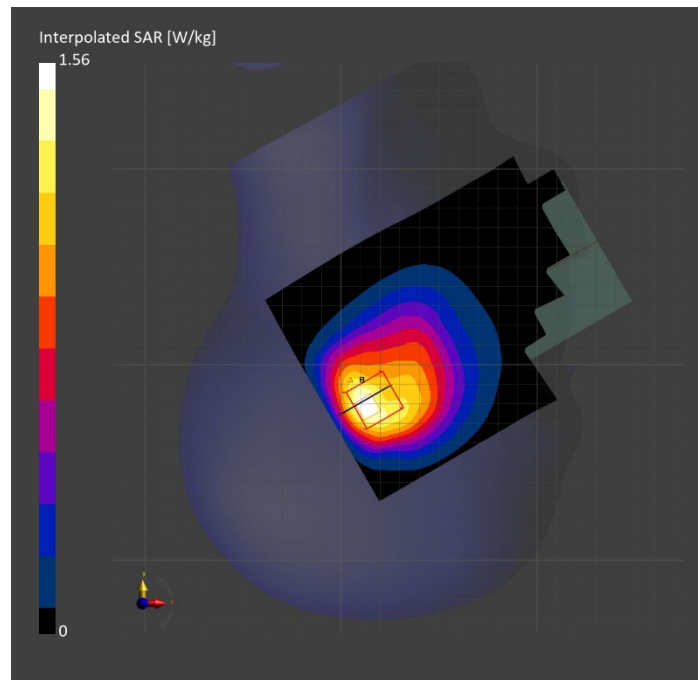
Probe Calibration Date	EX3DV4 - SN7448 2023-02-14	Phantom	Twin-SAM V5.0 (30deg probe tilt)
DAE Calibration Date	DAE4 Sn1472 2023-01-23	TSL Type	HBBL-600-10000
Software Version	16.2.4.2524		

Scan Setup

	Area Scan	Zoom Scan
Grid Extents [mm]	120.0 x 180.0	30.0 x 30.0 x 30.0
Grid Steps [mm]	15.0 x 15.0	6.0 x 6.0 x 1.5
Sensor Surface [mm]	3.0	1.4
Graded Grid	N/A	Yes
M2/M1 [%]		73.6
Dist 3dB Peak [mm]		7.3

Measurement Results

	Area Scan	Zoom Scan
psSAR1g [W/Kg]	0.730	0.685
psSAR10g [W/Kg]	0.475	0.408
Power Drift [dB]	N/A	-0.00



Measurement Report for Band n71: 5G NR (DFT-s-OFDM, 50% RB, 20 MHz, QPSK, 15 kHz) RBPosition:Mid AntennaCfg:SISO, BACK

Exposure Conditions

Band	Band n71	TSL Permittivity	43.5
Frequency [MHz] Channel Number	680.500 136100	TSL Conductivity [S/m]	0.852
Group UID	5G NR FR1 FDD 10939-AAC	Phantom Section TSL	Flat HSL
Conversion Factor	8.93	Test Distance [mm]	5.00

Hardware Setup

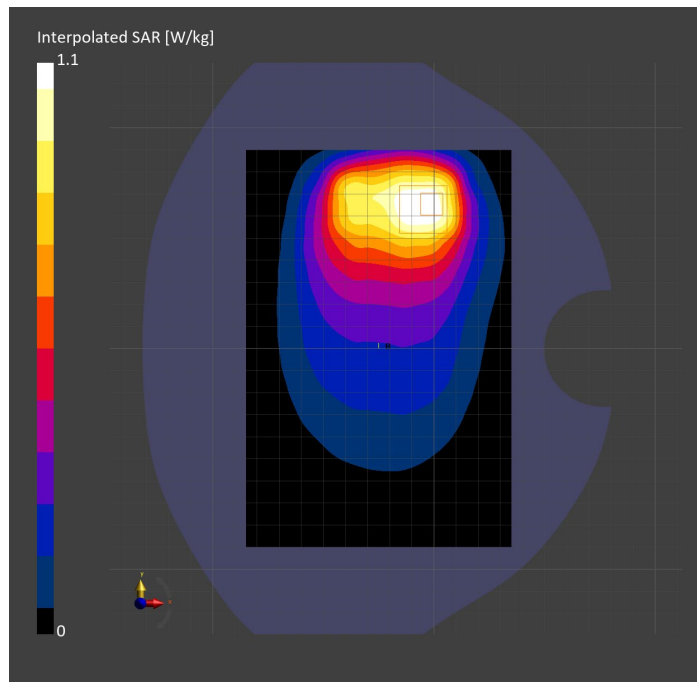
Probe Calibration Date	EX3DV4 - SN7448 2023-02-14	Phantom	Twin-SAM V5.0 (30deg probe tilt)
DAE Calibration Date	DAE4 Sn1472 2023-01-23	TSL Type	HBBL-600-10000
Software Version	16.2.4.2524		

Scan Setup

	Area Scan	Zoom Scan
Grid Extents [mm]	120.0 x 180.0	30.0 x 30.0 x 30.0
Grid Steps [mm]	15.0 x 15.0	6.0 x 6.0 x 1.5
Sensor Surface [mm]	3.0	1.4
Graded Grid	N/A	Yes
M2/M1 [%]		78.6
Dist 3dB Peak [mm]		12.4

Measurement Results

	Area Scan	Zoom Scan
psSAR1g [W/Kg]	0.539	0.548
psSAR10g [W/Kg]	0.368	0.306
Power Drift [dB]	N/A	-0.00



Measurement Report for Band n77: 5G NR (DFT-s-OFDM, 1 RB, 100 MHz, QPSK, 30 kHz) RBPosition:Mid AntennaCfg:SISO, EDGE RIGHT

Exposure Conditions

Band	Band n77	TSL Permittivity	39.3
Frequency [MHz] Channel Number	3499.980 633332	TSL Conductivity [S/m]	2.80
Group UID	5G NR FR1 TDD 10866-AAF	Phantom Section TSL	Flat HSL
Conversion Factor	6.87	Test Distance [mm]	5.00

Hardware Setup

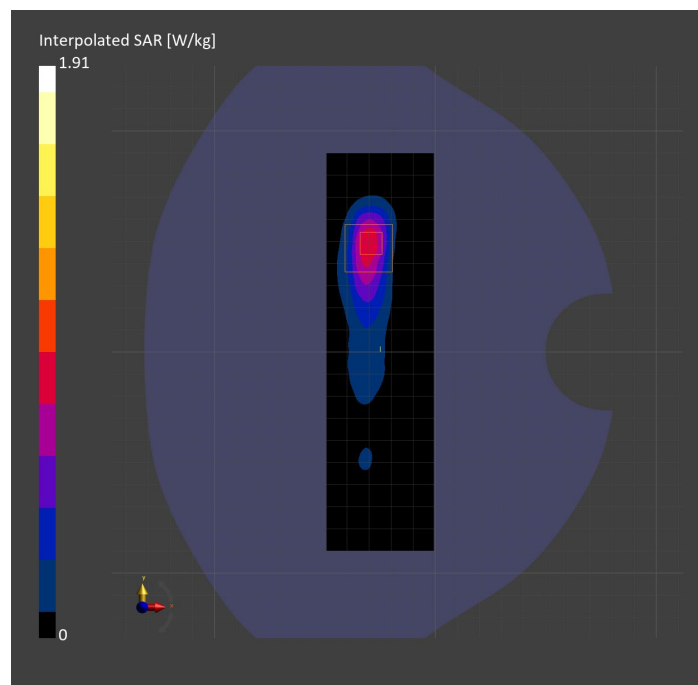
Probe Calibration Date	EX3DV4 - SN7335 2023-01-26	Phantom	Twin-SAM V8.0 (30deg probe tilt)
DAE Calibration Date	DAE4ip Sn1619 2023-04-18	TSL Type	HBBL-600-10000
Software Version	16.2.4.2524		

Scan Setup

	Area Scan	Zoom Scan
Grid Extents [mm]	48.6 x 180.0	28.0 x 28.0 x 28.0
Grid Steps [mm]	8.1 x 10.0	5.0 x 5.0 x 1.4
Sensor Surface [mm]	4.0	1.4
Graded Grid	N/A	Yes
M2/M1 [%]		74.3
Dist 3dB Peak [mm]		7.0

Measurement Results

	Area Scan	Zoom Scan
psSAR1g [W/Kg]	0.677	0.708
psSAR10g [W/Kg]	0.266	0.267
Power Drift [dB]	N/A	-0.05



Measurement Report for Band n77: 5G NR (DFT-s-OFDM, 1 RB, 100 MHz, QPSK, 30 kHz) RBPosition:Mid AntennaCfg:SISO, BACK

Exposure Conditions

Band	Band n77	TSL Permittivity	38.7
Frequency [MHz] Channel Number	3499.980 633332	TSL Conductivity [S/m]	2.82
Group UID	5G NR FR1 TDD 10866-AAF	Phantom Section TSL	Flat HSL
Conversion Factor	6.87	Test Distance [mm]	5.00

Hardware Setup

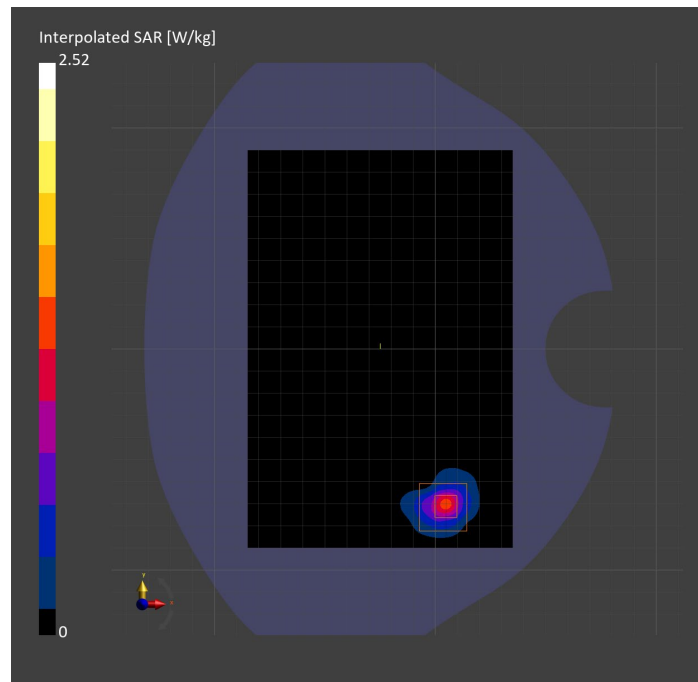
Probe Calibration Date	EX3DV4 - SN7335 2023-01-26	Phantom	Twin-SAM V8.0 (30deg probe tilt)
DAE Calibration Date	DAE4ip Sn1619 2023-04-18	TSL Type	HBBL-600-10000
Software Version	16.2.4.2524		

Scan Setup

	Area Scan	Zoom Scan
Grid Extents [mm]	120.0 x 180.0	30.0 x 30.0 x 28.0
Grid Steps [mm]	10.0 x 10.0	5.0 x 5.0 x 1.4
Sensor Surface [mm]	3.0	1.4
Graded Grid	N/A	Yes
M2/M1 [%]		74.4
Dist 3dB Peak [mm]		5.7

Measurement Results

	Area Scan	Zoom Scan
psSAR1g [W/Kg]	0.873	0.898
psSAR10g [W/Kg]	0.292	0.300
Power Drift [dB]	N/A	-0.19



Measurement Report for Band n77: 5G NR (DFT-s-OFDM, 1 RB, 100 MHz, QPSK, 30 kHz) RBPosition:Mid AntennaCfg:SISO, CHEEK

Exposure Conditions

Band	Band n77	TSL Permittivity	38.1
Frequency [MHz] Channel Number	3499.980 633332	TSL Conductivity [S/m]	2.95
Group UID	5G NR FR1 TDD 10866-AAF	Phantom Section TSL	LeftHead HSL
Conversion Factor	6.79	Test Distance [mm]	0.00

Hardware Setup

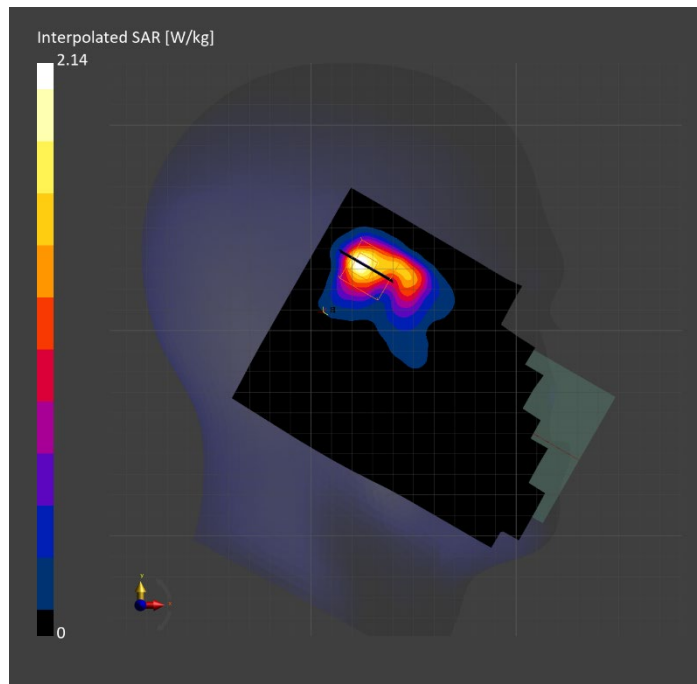
Probe Calibration Date	EX3DV4 - SN3990 2023-02-17	Phantom	Twin-SAM V5.0 (30deg probe tilt)
DAE Calibration Date	DAE4 Sn1545 2023-02-14	TSL Type	HBBL-600-10000
Software Version	16.2.4.2524		

Scan Setup

	Area Scan	Zoom Scan
Grid Extents [mm]	120.0 x 180.0	28.0 x 28.0 x 28.0
Grid Steps [mm]	10.0 x 10.0	5.0 x 5.0 x 1.4
Sensor Surface [mm]	3.0	1.4
Graded Grid	N/A	Yes
M2/M1 [%]		75.5
Dist 3dB Peak [mm]		7.3

Measurement Results

	Area Scan	Zoom Scan
psSAR1g [W/Kg]	0.756	0.869
psSAR10g [W/Kg]	0.315	0.334
Power Drift [dB]	N/A	-0.06



Measurement Report for Band n77: 5G NR (DFT-s-OFDM, 50% RB, 100 MHz, QPSK, 30 kHz) RBPosition:Mid AntennaCfg:SISO, BACK

Exposure Conditions

Band	Band n77	TSL Permittivity	38.5
Frequency [MHz] Channel Number	3858.000 657200	TSL Conductivity [S/m]	3.15
Group UID	5G NR FR1 TDD 10917-AAD	Phantom Section TSL	Flat HSL
Conversion Factor	6.15	Test Distance [mm]	5.00

Hardware Setup

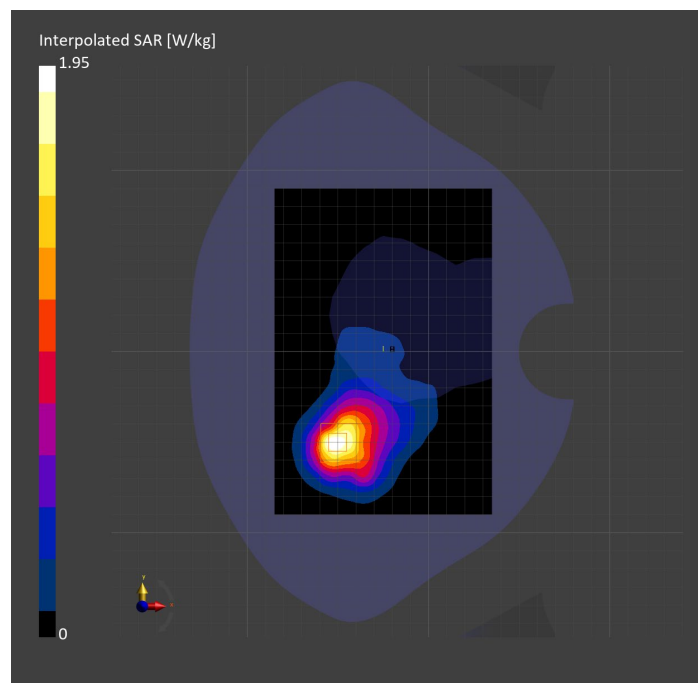
Probe Calibration Date	EX3DV4 - SN7463 2023-04-19	Phantom	Twin-SAM V8.0 (30deg probe tilt)
DAE Calibration Date	DAE4 Sn1673 2023-05-12	TSL Type	HBBL-600-10000
Software Version	16.2.4.2524		

Scan Setup

	Area Scan	Zoom Scan
Grid Extents [mm]	120.0 x 180.0	30.0 x 30.0 x 28.0
Grid Steps [mm]	10.0 x 10.0	5.0 x 5.0 x 1.4
Sensor Surface [mm]	3.0	1.4
Graded Grid	N/A	Yes
M2/M1 [%]		73.3
Dist 3dB Peak [mm]		9.5

Measurement Results

	Area Scan	Zoom Scan
psSAR1g [W/Kg]	0.704	0.746
psSAR10g [W/Kg]	0.311	0.313
Power Drift [dB]	N/A	-0.03



Measurement Report for Band n77: 5G NR (DFT-s-OFDM, 1 RB, 100 MHz, QPSK, 30 kHz) RBPosition:Mid AntennaCfg:SISO, CHEEK

Exposure Conditions

Band	Band n77	TSL Permittivity	38.5
Frequency [MHz] Channel Number	3858.000 657200	TSL Conductivity [S/m]	3.15
Group UID	5G NR FR1 TDD 10866-AAF	Phantom Section TSL	LeftHead HSL
Conversion Factor	6.15	Test Distance [mm]	0.00

Hardware Setup

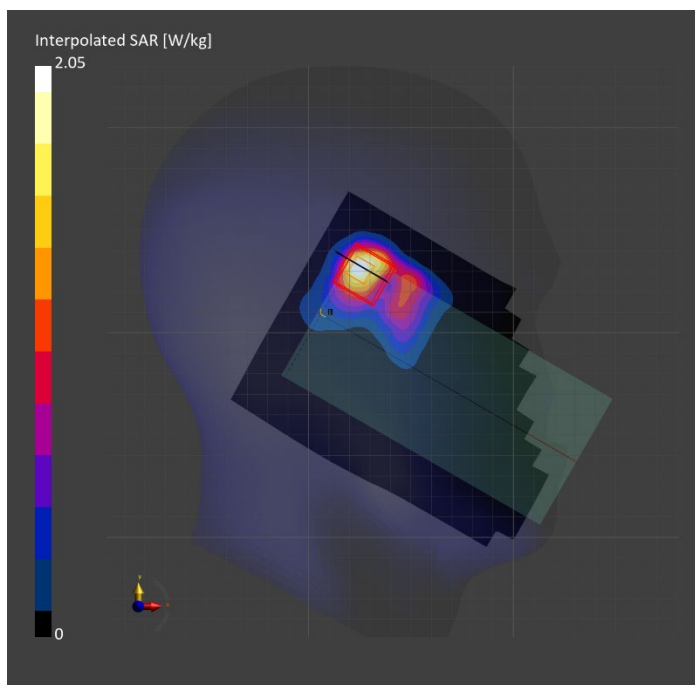
Probe Calibration Date	EX3DV4 - SN7463 2023-04-19	Phantom	Twin-SAM V8.0 (30deg probe tilt)
DAE Calibration Date	DAE4 Sn1673 2023-05-12	TSL Type	HBBL-600-10000
Software Version	16.2.4.2524		

Scan Setup

	Area Scan	Zoom Scan
Grid Extents [mm]	120.0 x 180.0	30.0 x 30.0 x 28.0
Grid Steps [mm]	10.0 x 10.0	5.0 x 5.0 x 1.4
Sensor Surface [mm]	3.0	1.4
Graded Grid	N/A	Yes
M2/M1 [%]		72.8
Dist 3dB Peak [mm]		8.0

Measurement Results

	Area Scan	Zoom Scan
psSAR1g [W/Kg]	0.615	0.710
psSAR10g [W/Kg]	0.252	0.261
Power Drift [dB]	N/A	-0.02



Measurement Report for Band n77: 5G NR (DFT-s-OFDM, 50% RB, 100 MHz, QPSK, 30 kHz) RBPosition:Mid AntennaCfg:SISO, EDGE RIGHT

Exposure Conditions

Band	Band n77	TSL Permittivity	37.0
Frequency [MHz] Channel Number	3858.000 657200	TSL Conductivity [S/m]	3.14
Group UID	5G NR FR1 TDD 10917-AAD	Phantom Section TSL	Flat HSL
Conversion Factor	6.15	Test Distance [mm]	5.00

Hardware Setup

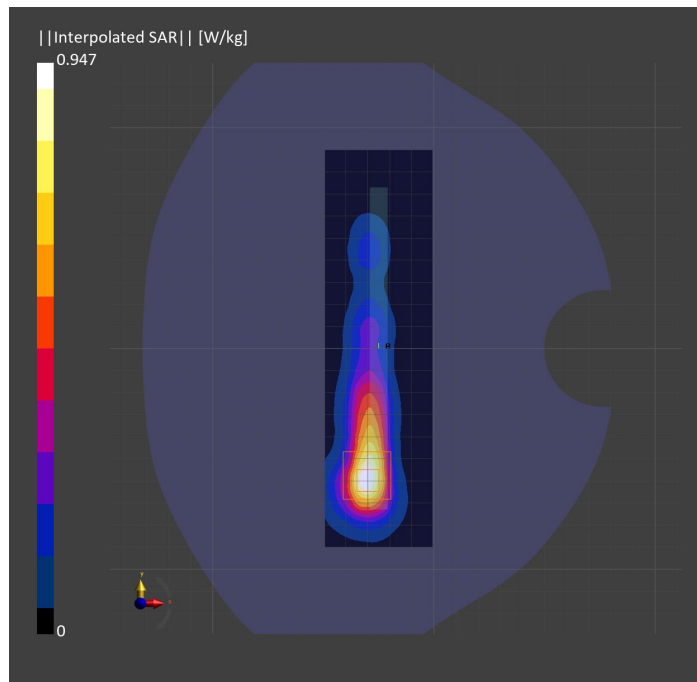
Probe Calibration Date	EX3DV4 - SN7463 2023-04-19	Phantom	Twin-SAM V8.0 (30deg probe tilt)
DAE Calibration Date	DAE4 Sn1673 2023-05-12	TSL Type	HBBL-600-10000
Software Version	16.2.4.2524		

Scan Setup

	Area Scan	Zoom Scan
Grid Extents [mm]	48.6 x 180.0	30.0 x 30.0 x 28.0
Grid Steps [mm]	8.1 x 10.0	5.0 x 5.0 x 1.4
Sensor Surface [mm]	3.0	1.4
Graded Grid	N/A	Yes
M2/M1 [%]		69.8
Dist 3dB Peak [mm]		8.0

Measurement Results

	Area Scan	Zoom Scan
psSAR1g [W/Kg]	0.681	0.714
psSAR10g [W/Kg]	0.270	0.279
Power Drift [dB]	N/A	0.15



THIS PAGE INTENTIONALLY LEFT BLANK

THIS PAGE INTENTIONALLY LEFT BLANK

THIS PAGE INTENTIONALLY LEFT BLANK

THIS PAGE INTENTIONALLY LEFT BLANK

THIS PAGE INTENTIONALLY LEFT BLANK

THIS PAGE INTENTIONALLY LEFT BLANK

Measurement Report for WLAN 2.4GHz: IEEE 802.11b WiFi 2.4 GHz (DSSS, 1 Mbps, 99pc duty cycle), BACK

Exposure Conditions

Band	WLAN 2.4GHz	TSL Permittivity	38.5
Frequency [MHz] Channel Number	2437.000 6	TSL Conductivity [S/m]	1.72
Group UID	WLAN 10415-AAA	Phantom Section TSL	Flat HSL
Conversion Factor	7.64	Test Distance [mm]	5.00

Hardware Setup

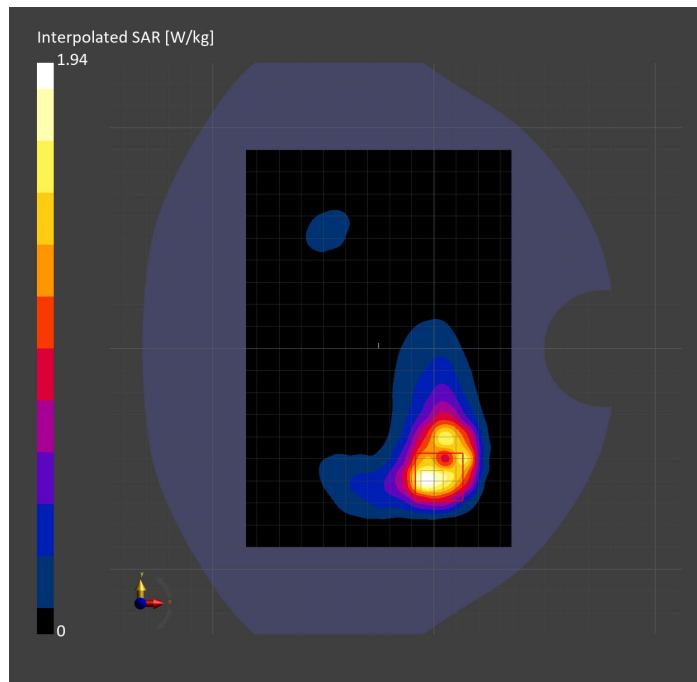
Probe Calibration Date	EX3DV4 - SN7587 2023-04-18	Phantom	Twin-SAM V8.0 (30deg probe tilt)
DAE Calibration Date	DAE4 Sn1239 2023-03-16	TSL Type	HBBL-600-10000
Software Version	16.2.4.2524		

Scan Setup

	Area Scan	Zoom Scan
Grid Extents [mm]	120.0 x 180.0	30.0 x 30.0 x 30.0
Grid Steps [mm]	10.0 x 10.0	5.0 x 5.0 x 1.5
Sensor Surface [mm]	3.0	1.4
Graded Grid	N/A	Yes
M2/M1 [%]		76.8
Dist 3dB Peak [mm]		6.8

Measurement Results

	Area Scan	Zoom Scan
psSAR1g [W/Kg]	0.772	0.824
psSAR10g [W/Kg]	0.383	0.363
Power Drift [dB]	N/A	0.02



Measurement Report for WLAN 2.4GHz: IEEE 802.11b WiFi 2.4 GHz (DSSS, 1 Mbps, 99pc duty cycle), CHEEK

Exposure Conditions

Band	WLAN 2.4GHz	TSL Permittivity	40.7
Frequency [MHz] Channel Number	2437.000 6	TSL Conductivity [S/m]	1.77
Group UID	WLAN 10415-AAA	Phantom Section TSL	LeftHead HSL
Conversion Factor	7.64	Test Distance [mm]	0.00

Hardware Setup

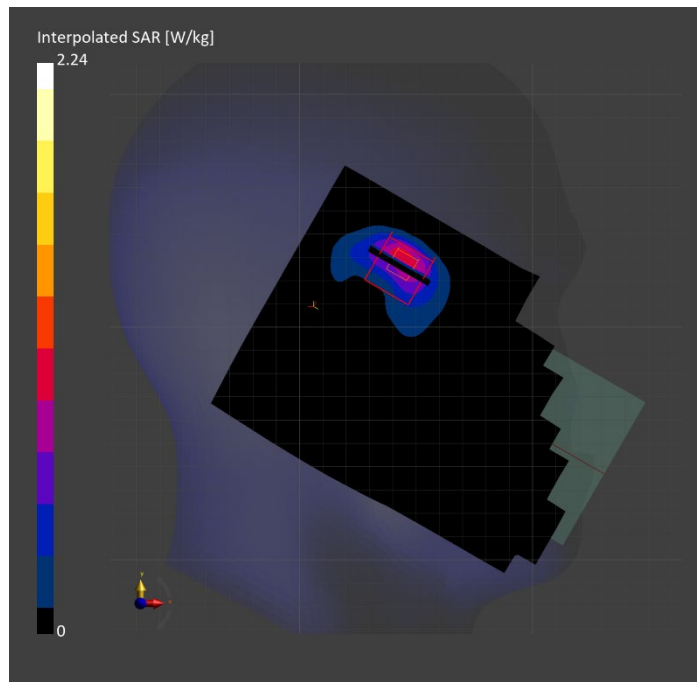
Probe Calibration Date	EX3DV4 - SN7587 2023-04-18	Phantom	Twin-SAM V8.0 (30deg probe tilt)
DAE Calibration Date	DAE4 Sn1239 2023-03-16	TSL Type	HBBL-600-10000
Software Version	16.2.4.2524		

Scan Setup

	Area Scan	Zoom Scan
Grid Extents [mm]	120.0 x 180.0	30.0 x 30.0 x 30.0
Grid Steps [mm]	10.0 x 10.0	5.0 x 5.0 x 1.5
Sensor Surface [mm]	3.0	1.4
Graded Grid	N/A	Yes
M2/M1 [%]		77.1
Dist 3dB Peak [mm]		6.1

Measurement Results

	Area Scan	Zoom Scan
psSAR1g [W/Kg]	0.790	0.899
psSAR10g [W/Kg]	0.360	0.367
Power Drift [dB]	N/A	-0.05



Measurement Report for WLAN 2.4GHz: IEEE 802.11b WiFi 2.4 GHz (DSSS, 1 Mbps, 99pc duty cycle), EDGE RIGHT

Exposure Conditions

Band	WLAN 2.4GHz	TSL Permittivity	40.7
Frequency [MHz] Channel Number	2417.000 2	TSL Conductivity [S/m]	1.75
Group UID	WLAN 10415-AAA	Phantom Section TSL	Flat HSL
Conversion Factor	7.64	Test Distance [mm]	5.00

Hardware Setup

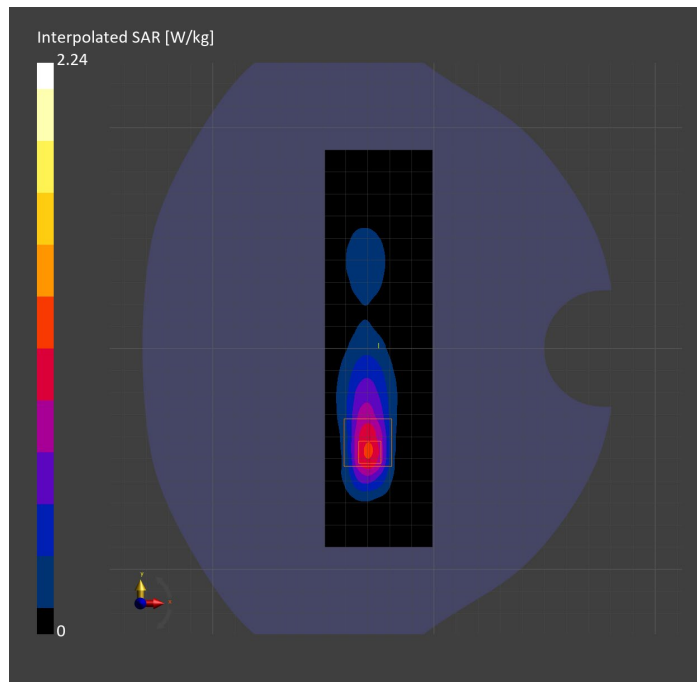
Probe Calibration Date	EX3DV4 - SN7587 2023-04-18	Phantom	Twin-SAM V8.0 (30deg probe tilt)
DAE Calibration Date	DAE4 Sn1239 2023-03-16	TSL Type	HBBL-600-10000
Software Version	16.2.4.2524		

Scan Setup

	Area Scan	Zoom Scan
Grid Extents [mm]	48.6 x 180.0	30.0 x 30.0 x 30.0
Grid Steps [mm]	8.1 x 10.0	5.0 x 5.0 x 1.5
Sensor Surface [mm]	3.0	1.4
Graded Grid	N/A	Yes
M2/M1 [%]		77.6
Dist 3dB Peak [mm]		6.0

Measurement Results

	Area Scan	Zoom Scan
psSAR1g [W/Kg]	0.875	0.961
psSAR10g [W/Kg]	0.386	0.401
Power Drift [dB]	N/A	-0.17



Measurement Report for U-NII-1, U-NII-2A: IEEE 802.11n (HT Greenfield, 13.5 Mbps, BPSK), EDGE LEFT

Exposure Conditions

Band	U-NII-1, U-NII-2A	TSL Permittivity	34.4
Frequency [MHz] Channel Number	5270.000 54	TSL Conductivity [S/m]	4.55
Group UID	WLAN 10114-CAE	Phantom Section TSL	Flat HSL
Conversion Factor	5.14	Test Distance [mm]	5.00

Hardware Setup

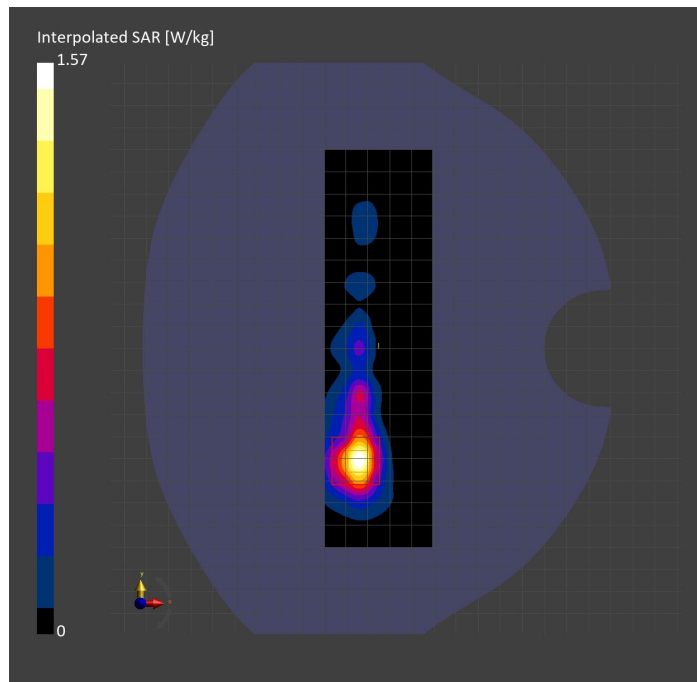
Probe Calibration Date	EX3DV4 - SN3773 2023-02-13	Phantom	Twin-SAM V5.0 (30deg probe tilt)
DAE Calibration Date	DAE4 Sn1258 2023-03-16	TSL Type	HBBL-600-10000
Software Version	16.2.4.2524		

Scan Setup

	Area Scan	Zoom Scan
Grid Extents [mm]	48.6 x 180.0	24.0 x 24.0 x 22.0
Grid Steps [mm]	8.1 x 10.0	4.0 x 4.0 x 1.4
Sensor Surface [mm]	3.0	1.4
Graded Grid	N/A	Yes
M2/M1 [%]		64.3
Dist 3dB Peak [mm]		7.4

Measurement Results

	Area Scan	Zoom Scan
psSAR1g [W/Kg]	0.403	0.424
psSAR10g [W/Kg]	0.133	0.136
Power Drift [dB]	N/A	0.10



Measurement Report for U-NII-1, U-NII-2A: IEEE 802.11n (HT Greenfield, 13.5 Mbps, BPSK), CHEEK

Exposure Conditions

Band	U-NII-1, U-NII-2A	TSL Permittivity	35.6
Frequency [MHz] Channel Number	5270.000 54	TSL Conductivity [S/m]	4.55
Group UID	WLAN 10114-CAE	Phantom Section TSL	RightHead HSL
Conversion Factor	5.59	Test Distance [mm]	0.00

Hardware Setup

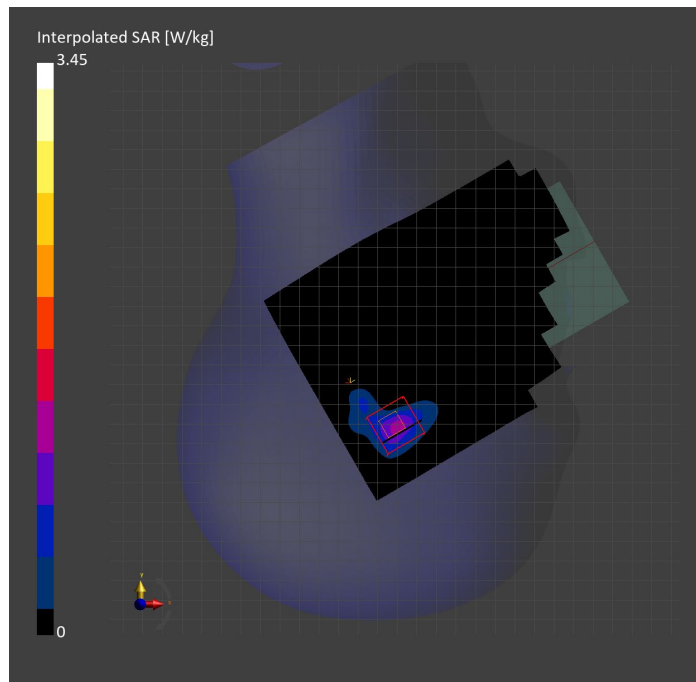
Probe Calibration Date	EX3DV4 - SN3929 2023-04-26	Phantom	Twin-SAM V5.0 (30deg probe tilt)
DAE Calibration Date	DAE4 Sn1675 2023-05-11	TSL Type	HBBL-600-10000
Software Version	16.2.4.2524		

Scan Setup

	Area Scan	Zoom Scan
Grid Extents [mm]	120.0 x 180.0	24.0 x 24.0 x 22.0
Grid Steps [mm]	10.0 x 10.0	4.0 x 4.0 x 1.4
Sensor Surface [mm]	3.0	1.4
Graded Grid	N/A	Yes
M2/M1 [%]		66.4
Dist 3dB Peak [mm]		5.2

Measurement Results

	Area Scan	Zoom Scan
psSAR1g [W/Kg]	0.861	0.840
psSAR10g [W/Kg]	0.291	0.292
Power Drift [dB]	N/A	0.01



Measurement Report for U-NII-1, U-NII-2A: IEEE 802.11n (HT Greenfield, 13.5 Mbps, BPSK), BACK

Exposure Conditions

Band	U-NII-1, U-NII-2A	TSL Permittivity	35.2
Frequency [MHz] Channel Number	5270.000 54	TSL Conductivity [S/m]	4.71
Group UID	WLAN 10114-CAE	Phantom Section TSL	Flat HSL
Conversion Factor	5.14	Test Distance [mm]	5.00

Hardware Setup

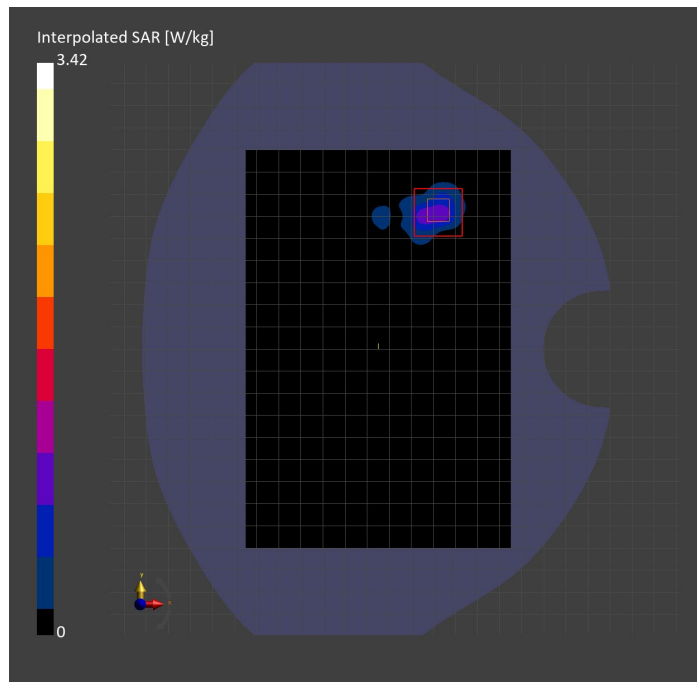
Probe Calibration Date	EX3DV4 - SN3773 2023-02-13	Phantom	Twin-SAM V5.0 (30deg probe tilt)
DAE Calibration Date	DAE4 Sn1258 2023-03-16	TSL Type	HBBL-600-10000
Software Version	16.2.4.2524		

Scan Setup

	Area Scan	Zoom Scan
Grid Extents [mm]	120.0 x 180.0	24.0 x 24.0 x 22.0
Grid Steps [mm]	10.0 x 10.0	4.0 x 4.0 x 1.4
Sensor Surface [mm]	3.0	1.4
Graded Grid	N/A	Yes
M2/M1 [%]		61.2
Dist 3dB Peak [mm]		5.8

Measurement Results

	Area Scan	Zoom Scan
psSAR1g [W/Kg]	0.755	0.827
psSAR10g [W/Kg]	0.242	0.245
Power Drift [dB]	N/A	0.07



Measurement Report for WLAN 5GHz: IEEE 802.11ac WiFi (80MHz, MCS0, 99pc duty cycle), CHEEK

Exposure Conditions

Band	WLAN 5GHz	TSL Permittivity	35.6
Frequency [MHz] Channel Number	5610.000 122	TSL Conductivity [S/m]	4.87
Group UID	WLAN 10544-AAD	Phantom Section TSL	RightHead HSL
Conversion Factor	4.46	Test Distance [mm]	0.00

Hardware Setup

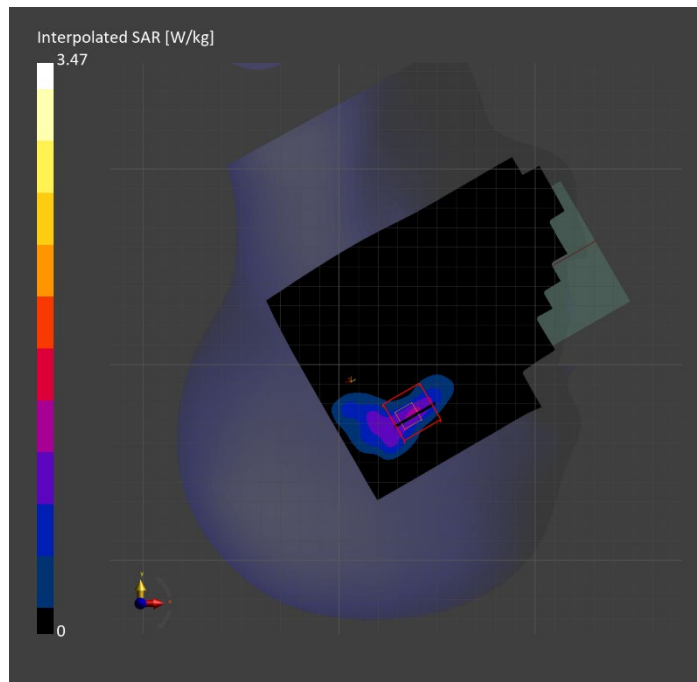
Probe Calibration Date	EX3DV4 - SN7585 2023-04-18	Phantom	Twin-SAM V5.0 (30deg probe tilt)
DAE Calibration Date	DAE4 Sn1797 2023-04-03	TSL Type	HBBL-600-10000
Software Version	16.2.4.2524		

Scan Setup

	Area Scan	Zoom Scan
Grid Extents [mm]	120.0 x 180.0	24.0 x 24.0 x 22.0
Grid Steps [mm]	10.0 x 10.0	4.0 x 4.0 x 1.4
Sensor Surface [mm]	3.0	1.4
Graded Grid	N/A	Yes
M2/M1 [%]		64.8
Dist 3dB Peak [mm]		5.4

Measurement Results

	Area Scan	Zoom Scan
psSAR1g [W/Kg]	0.823	0.868
psSAR10g [W/Kg]	0.324	0.284
Power Drift [dB]	N/A	-0.02



Measurement Report for WLAN 5GHz: IEEE 802.11ac WiFi (80MHz, MCS0, 99pc duty cycle), BACK

Exposure Conditions

Band	WLAN 5GHz	TSL Permittivity	35.4
Frequency [MHz] Channel Number	5690.000 138	TSL Conductivity [S/m]	4.91
Group UID	WLAN 10544-AAD	Phantom Section TSL	Flat HSL
Conversion Factor	4.69	Test Distance [mm]	5.00

Hardware Setup

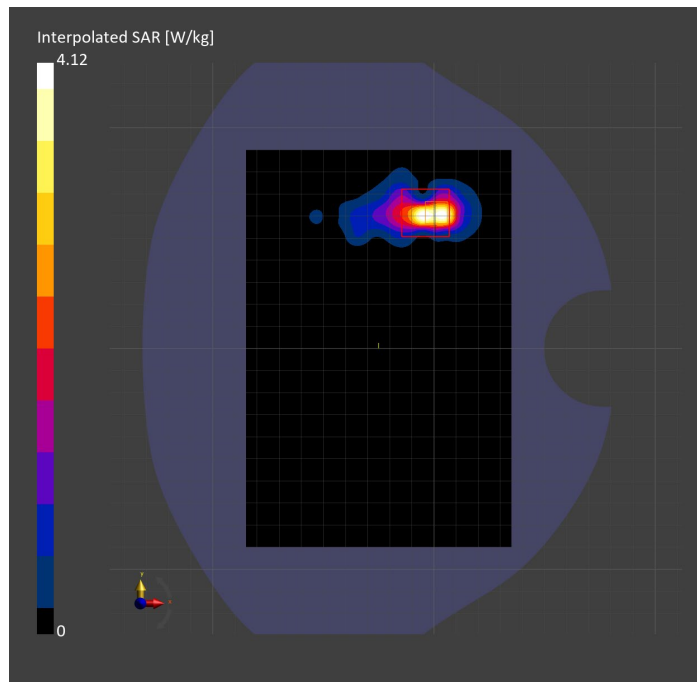
Probe Calibration Date	EX3DV4 - SN7585 2023-04-18	Phantom	Twin-SAM V5.0 (30deg probe tilt)
DAE Calibration Date	DAE4 Sn1797 2023-04-03	TSL Type	HBBL-600-10000
Software Version	16.2.4.2524		

Scan Setup

	Area Scan	Zoom Scan
Grid Extents [mm]	120.0 x 180.0	24.0 x 24.0 x 22.0
Grid Steps [mm]	10.0 x 10.0	4.0 x 4.0 x 1.4
Sensor Surface [mm]	3.0	1.4
Graded Grid	N/A	Yes
M2/M1 [%]		57.5
Dist 3dB Peak [mm]		4.1

Measurement Results

	Area Scan	Zoom Scan
psSAR1g [W/Kg]	0.721	0.817
psSAR10g [W/Kg]	0.209	0.203
Power Drift [dB]	N/A	-0.03



Measurement Report for WLAN 5GHz: IEEE 802.11ac WiFi (80MHz, MCS0, 99pc duty cycle), EDGE LEFT

Exposure Conditions

Band	WLAN 5GHz	TSL Permittivity	35.6
Frequency [MHz] Channel Number	5610.000 122	TSL Conductivity [S/m]	4.87
Group UID	WLAN 10544-AAD	Phantom Section TSL	Flat HSL
Conversion Factor	4.46	Test Distance [mm]	5.00

Hardware Setup

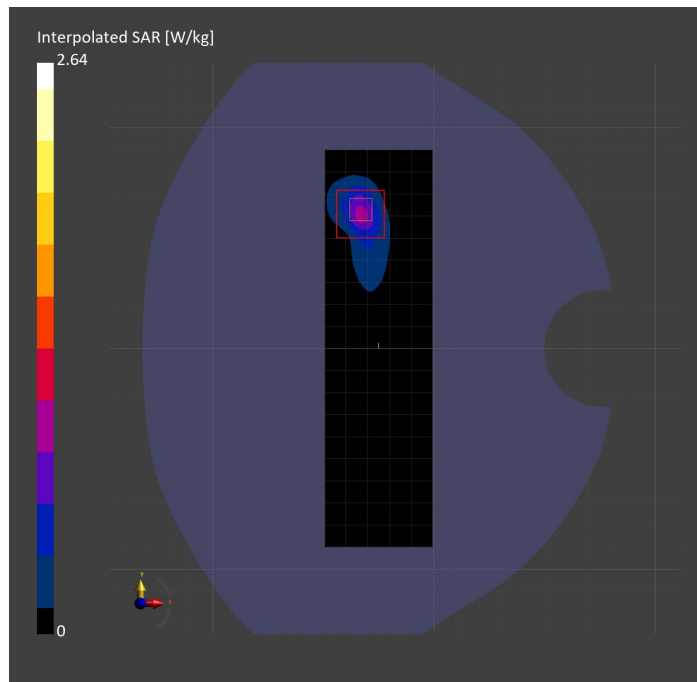
Probe Calibration Date	EX3DV4 - SN7585 2023-04-18	Phantom	Twin-SAM V5.0 (30deg probe tilt)
DAE Calibration Date	DAE4 Sn1797 2023-04-03	TSL Type	HBBL-600-10000
Software Version	16.2.4.2524		

Scan Setup

	Area Scan	Zoom Scan
Grid Extents [mm]	48.6 x 180.0	24.0 x 24.0 x 22.0
Grid Steps [mm]	8.1 x 10.0	4.0 x 4.0 x 1.4
Sensor Surface [mm]	3.0	1.4
Graded Grid	N/A	Yes
M2/M1 [%]		63.5
Dist 3dB Peak [mm]		6.6

Measurement Results

	Area Scan	Zoom Scan
psSAR1g [W/Kg]	0.646	0.659
psSAR10g [W/Kg]	0.205	0.199
Power Drift [dB]	N/A	-0.10



Measurement Report for WLAN 5GHz: IEEE 802.11ac WiFi (80MHz, MCS0, 99pc duty cycle), BACK

Exposure Conditions

Band	WLAN 5GHz	TSL Permittivity	35.7
Frequency [MHz] Channel Number	5775.000 155	TSL Conductivity [S/m]	5.17
Group UID	WLAN 10544-AAD	Phantom Section TSL	Flat HSL
Conversion Factor	5.15	Test Distance [mm]	5.00

Hardware Setup

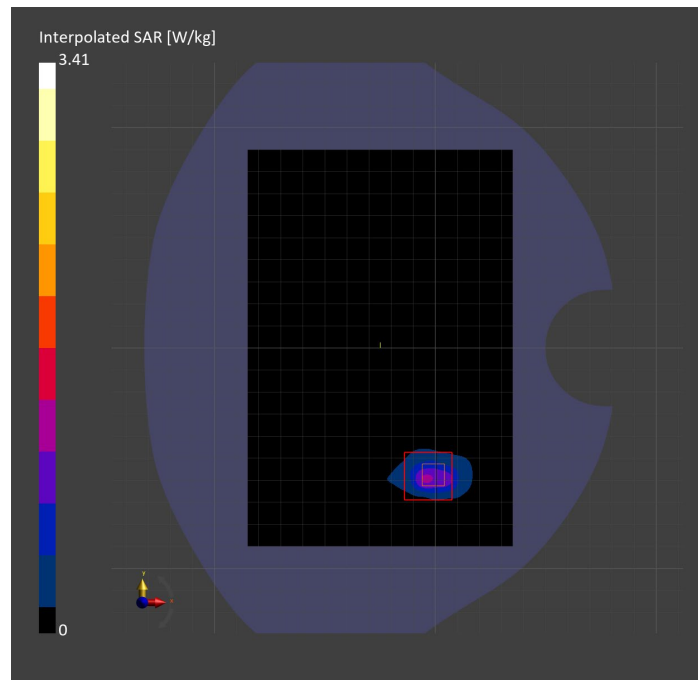
Probe Calibration Date	EX3DV4 - SN3902 2023-03-17	Phantom	Twin-SAM V5.0 (30deg probe tilt)
DAE Calibration Date	DAE4 Sn1439 2023-03-16	TSL Type	HBBL-600-10000
Software Version	16.2.4.2524		

Scan Setup

	Area Scan	Zoom Scan	Secondary Zoom Scan
Grid Extents [mm]	120.0 x 180.0	24.0 x 24.0 x 22.0	24.0 x 24.0 x 22.0
Grid Steps [mm]	10.0 x 10.0	4.0 x 4.0 x 1.4	4.0 x 4.0 x 1.4
Sensor Surface [mm]	3.0	1.4	1.4
Graded Grid	N/A	Yes	Yes
M2/M1 [%]		63.9	63.6
Dist 3dB Peak [mm]		6.1	6.1

Measurement Results

	Area Scan	Zoom Scan	Secondary Zoom Scan
psSAR1g [W/Kg]	0.810	0.864	0.847
psSAR10g [W/Kg]	0.250	0.256	0.246
Power Drift [dB]	N/A	-6.92	0.97



Measurement Report for WLAN 5GHz: IEEE 802.11ac WiFi (80MHz, MCS0, 99pc duty cycle), CHEEK

Exposure Conditions

Band	WLAN 5GHz	TSL Permittivity	35.4
Frequency [MHz] Channel Number	5775.000 155	TSL Conductivity [S/m]	5.25
Group UID	WLAN 10544-AAD	Phantom Section TSL	RightHead HSL
Conversion Factor	5.15	Test Distance [mm]	0.00

Hardware Setup

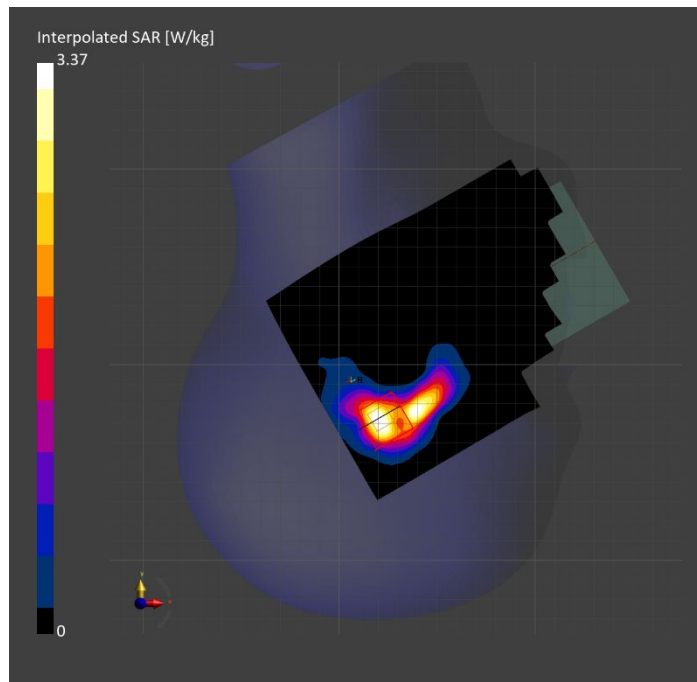
Probe Calibration Date	EX3DV4 - SN3902 2023-03-17	Phantom	Twin-SAM V5.0 (30deg probe tilt)
DAE Calibration Date	DAE4 Sn1439 2023-03-16	TSL Type	HBBL-600-10000
Software Version	16.2.4.2524		

Scan Setup

	Area Scan	Zoom Scan
Grid Extents [mm]	120.0 x 180.0	24.0 x 24.0 x 22.0
Grid Steps [mm]	10.0 x 10.0	4.0 x 4.0 x 1.4
Sensor Surface [mm]	3.0	1.4
Graded Grid	N/A	Yes
M2/M1 [%]		62.1
Dist 3dB Peak [mm]		6.4

Measurement Results

	Area Scan	Zoom Scan
psSAR1g [W/Kg]	0.769	0.849
psSAR10g [W/Kg]	0.280	0.297
Power Drift [dB]	N/A	0.12



Measurement Report for WLAN 5GHz: IEEE 802.11ac WiFi (80MHz, MCS0, 99pc duty cycle), EDGE LEFT

Exposure Conditions

Band	WLAN 5GHz	TSL Permittivity	34.2
Frequency [MHz] Channel Number	5775.000 155	TSL Conductivity [S/m]	5.14
Group UID	WLAN 10544-AAD	Phantom Section TSL	Flat HSL
Conversion Factor	4.86	Test Distance [mm]	5.00

Hardware Setup

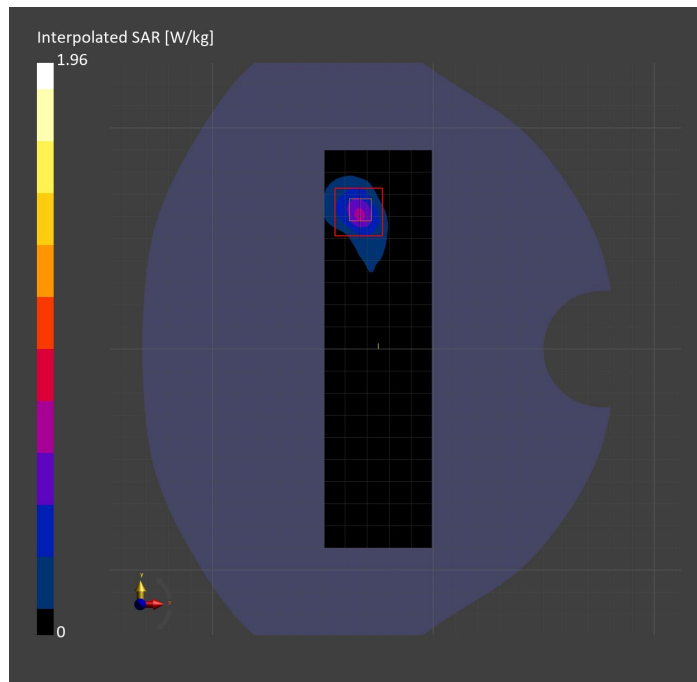
Probe Calibration Date	EX3DV4 - SN7810 2023-04-25	Phantom	Twin-SAM V8.0 (30deg probe tilt)
DAE Calibration Date	DAE4 Sn1797 2023-04-03	TSL Type	HBBL-600-10000
Software Version	16.2.4.2524		

Scan Setup

	Area Scan	Zoom Scan	Secondary Zoom Scan
Grid Extents [mm]	48.6 x 180.0	24.0 x 24.0 x 22.0	24.0 x 24.0 x 22.0
Grid Steps [mm]	8.1 x 10.0	4.0 x 4.0 x 1.4	4.0 x 4.0 x 1.4
Sensor Surface [mm]	3.0	1.4	1.4
Graded Grid	N/A	Yes	Yes
M2/M1 [%]		57.7	57.9
Dist 3dB Peak [mm]		6.9	6.9

Measurement Results

	Area Scan	Zoom Scan	Secondary Zoom Scan
psSAR1g [W/Kg]	0.459	0.455	0.452
psSAR10g [W/Kg]	0.147	0.131	0.128
Power Drift [dB]	N/A	-0.51	-0.20



Measurement Report for ISM 2.4 GHz Band: IEEE 802.15.1 Bluetooth (GFSK, DH5), BACK

Exposure Conditions

Band	ISM 2.4 GHz Band	TSL Permittivity	37.7
Frequency [MHz] Channel Number	2441.000 39	TSL Conductivity [S/m]	1.72
Group UID	Bluetooth 10032-CAA	Phantom Section TSL	Flat HSL
Conversion Factor	7.64	Test Distance [mm]	5.00

Hardware Setup

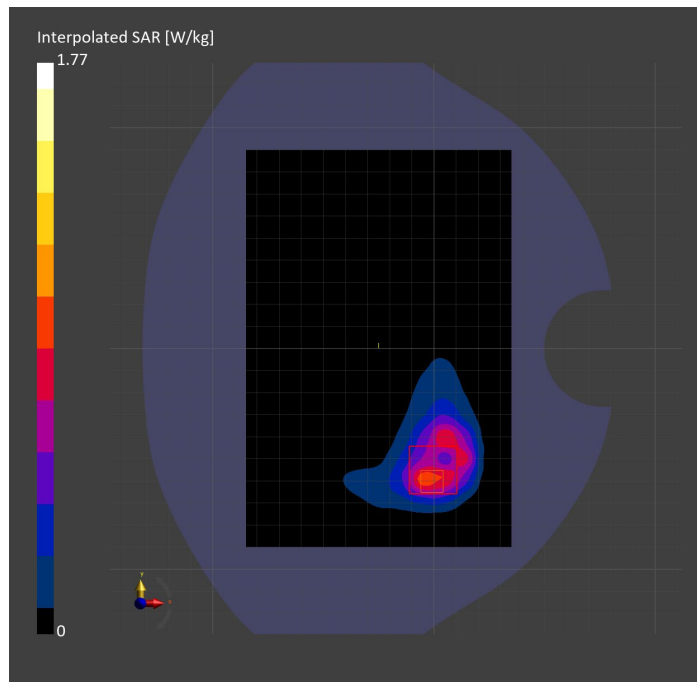
Probe Calibration Date	EX3DV4 - SN7587 2023-04-18	Phantom	Twin-SAM V8.0 (30deg probe tilt)
DAE Calibration Date	DAE4 Sn1239 2023-03-16	TSL Type	HBBL-600-10000
Software Version	16.2.4.2524		

Scan Setup

	Area Scan	Zoom Scan
Grid Extents [mm]	120.0 x 180.0	30.0 x 30.0 x 30.0
Grid Steps [mm]	10.0 x 10.0	5.0 x 5.0 x 1.5
Sensor Surface [mm]	3.0	1.4
Graded Grid	N/A	Yes
M2/M1 [%]		78.2
Dist 3dB Peak [mm]		6.8

Measurement Results

	Area Scan	Zoom Scan
psSAR1g [W/Kg]	0.724	0.725
psSAR10g [W/Kg]	0.367	0.316
Power Drift [dB]	N/A	-0.05



Measurement Report for ISM 2.4 GHz Band: IEEE 802.15.1 Bluetooth (GFSK, DH5), EDGE LEFT

Exposure Conditions

Band	ISM 2.4 GHz Band	TSL Permittivity	37.7
Frequency [MHz] Channel Number	2441.000 39	TSL Conductivity [S/m]	1.72
Group UID	Bluetooth 10032-CAA	Phantom Section TSL	Flat HSL
Conversion Factor	7.64	Test Distance [mm]	5.00

Hardware Setup

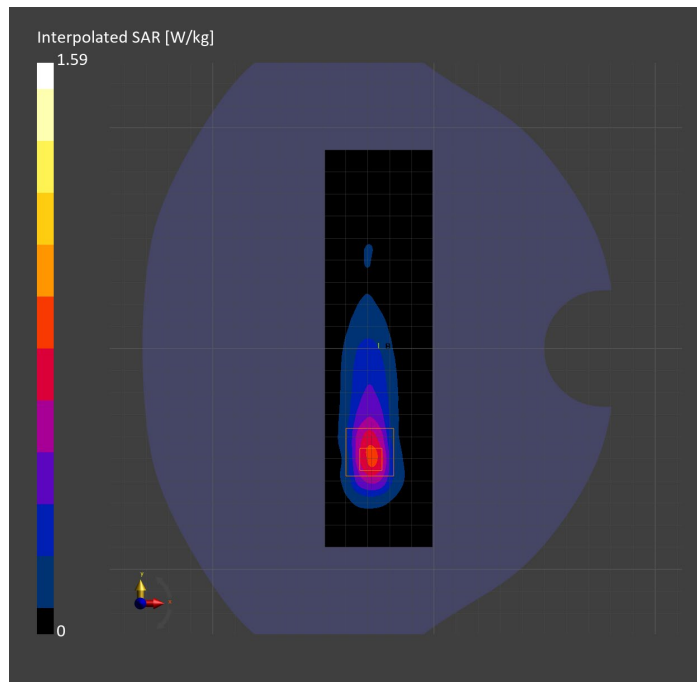
Probe Calibration Date	EX3DV4 - SN7587 2023-04-18	Phantom	Twin-SAM V8.0 (30deg probe tilt)
DAE Calibration Date	DAE4 Sn1239 2023-03-16	TSL Type	HBBL-600-10000
Software Version	16.2.4.2524		

Scan Setup

	Area Scan	Zoom Scan
Grid Extents [mm]	48.6 x 180.0	30.0 x 30.0 x 30.0
Grid Steps [mm]	8.1 x 10.0	5.0 x 5.0 x 1.5
Sensor Surface [mm]	3.0	1.4
Graded Grid	N/A	Yes
M2/M1 [%]		78.4
Dist 3dB Peak [mm]		7.0

Measurement Results

	Area Scan	Zoom Scan
psSAR1g [W/Kg]	0.642	0.722
psSAR10g [W/Kg]	0.286	0.307
Power Drift [dB]	N/A	0.03



Measurement Report for ISM 2.4 GHz Band: IEEE 802.15.1 Bluetooth (GFSK, DH5), CHEEK

Exposure Conditions

Band	ISM 2.4 GHz Band	TSL Permittivity	37.3
Frequency [MHz] Channel Number	2441.000 39	TSL Conductivity [S/m]	1.87
Group UID	Bluetooth 10032-CAA	Phantom Section TSL	LeftHead HSL
Conversion Factor	7.33	Test Distance [mm]	0.00

Hardware Setup

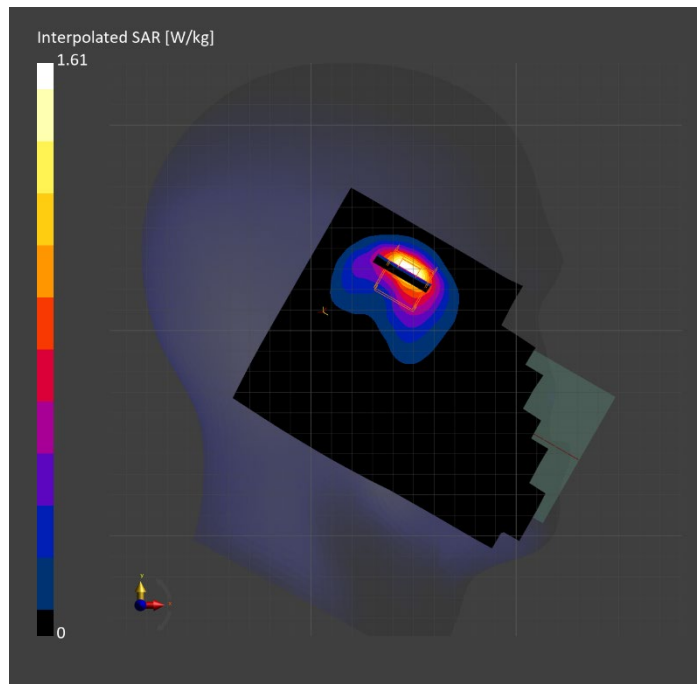
Probe Calibration Date	EX3DV4 - SN3772 2023-02-13	Phantom	Twin-SAM V8.0 (30deg probe tilt)
DAE Calibration Date	DAE4 Sn1359 2023-01-24	TSL Type	HBBL-600-10000
Software Version	16.2.4.2524		

Scan Setup

	Area Scan	Zoom Scan
Grid Extents [mm]	120.0 x 180.0	30.0 x 30.0 x 30.0
Grid Steps [mm]	10.0 x 10.0	5.0 x 5.0 x 1.5
Sensor Surface [mm]	3.0	1.4
Graded Grid	N/A	Yes
M2/M1 [%]		74.8
Dist 3dB Peak [mm]		6.2

Measurement Results

	Area Scan	Zoom Scan
psSAR1g [W/Kg]	0.577	0.621
psSAR10g [W/Kg]	0.255	0.257
Power Drift [dB]	N/A	-0.05



Measurement Report for Custom Band: IEEE 802.15.1 Bluetooth (GFSK, DH5), CHEEK

Exposure Conditions

Band	Custom Band	TSL Permittivity	34.6
Frequency [MHz] Channel Number	5230.000 5230000	TSL Conductivity [S/m]	4.75
Group UID	CW 10032-CAA	Phantom Section TSL	RightHead HSL
Conversion Factor	5.14	Test Distance [mm]	0.00

Hardware Setup

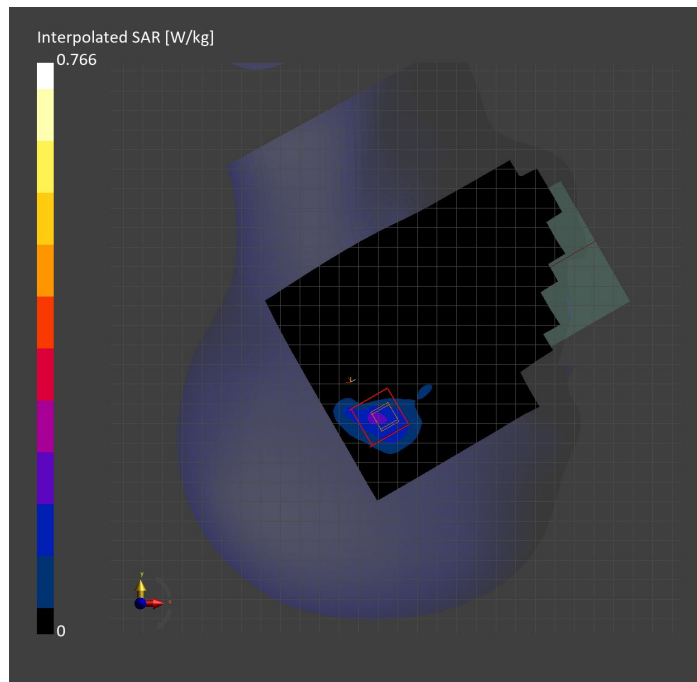
Probe Calibration Date	EX3DV4 - SN3773 2023-02-13	Phantom	Twin-SAM V5.0 (30deg probe tilt)
DAE Calibration Date	DAE4 Sn1258 2023-03-16	TSL Type	HBBL-600-10000
Software Version	16.2.4.2524		

Scan Setup

	Area Scan	Zoom Scan	Secondary Zoom Scan
Grid Extents [mm]	120.0 x 180.0	22.0 x 22.0 x 22.0	24.0 x 24.0 x 22.0
Grid Steps [mm]	10.0 x 10.0	4.0 x 4.0 x 1.4	4.0 x 4.0 x 1.4
Sensor Surface [mm]	3.0	1.4	1.4
Graded Grid	N/A	Yes	Yes
M2/M1 [%]		59.0	55.6
Dist 3dB Peak [mm]		5.7	4.0

Measurement Results

	Area Scan	Zoom Scan	Secondary Zoom Scan
psSAR1g [W/Kg]	0.147	0.157	0.155
psSAR10g [W/Kg]	0.057	0.050	0.052
Power Drift [dB]	N/A	-0.33	-0.02



Measurement Report for Custom Band: IEEE 802.15.1 Bluetooth (GFSK, DH5), BACK

Exposure Conditions

Band	Custom Band	TSL Permittivity	34.6
Frequency [MHz] Channel Number	5230.000 5230000	TSL Conductivity [S/m]	4.75
Group UID	CW 10032-CAA	Phantom Section TSL	Flat HSL
Conversion Factor	5.14	Test Distance [mm]	5.00

Hardware Setup

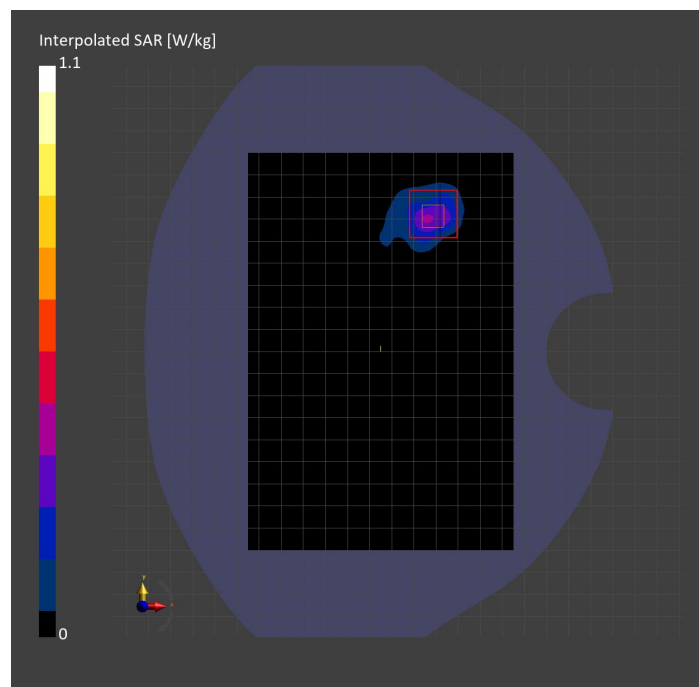
Probe Calibration Date	EX3DV4 - SN3773 2023-02-13	Phantom	Twin-SAM V5.0 (30deg probe tilt)
DAE Calibration Date	DAE4 Sn1258 2023-03-16	TSL Type	HBBL-600-10000
Software Version	16.2.4.2524		

Scan Setup

	Area Scan	Zoom Scan
Grid Extents [mm]	120.0 x 180.0	22.0 x 22.0 x 22.0
Grid Steps [mm]	10.0 x 10.0	4.0 x 4.0 x 1.4
Sensor Surface [mm]	3.0	1.4
Graded Grid	N/A	Yes
M2/M1 [%]		61.3
Dist 3dB Peak [mm]		6.4

Measurement Results

	Area Scan	Zoom Scan
psSAR1g [W/Kg]	0.271	0.277
psSAR10g [W/Kg]	0.093	0.092
Power Drift [dB]	N/A	-0.01



Measurement Report for Custom Band: IEEE 802.15.1 Bluetooth (GFSK, DH5), EDGE LEFT

Exposure Conditions

Band	Custom Band	TSL Permittivity	36.4
Frequency [MHz] Channel Number	5230.000 5230000	TSL Conductivity [S/m]	4.49
Group UID	CW 10032-CAA	Phantom Section TSL	Flat HSL
Conversion Factor	5.59	Test Distance [mm]	5.00

Hardware Setup

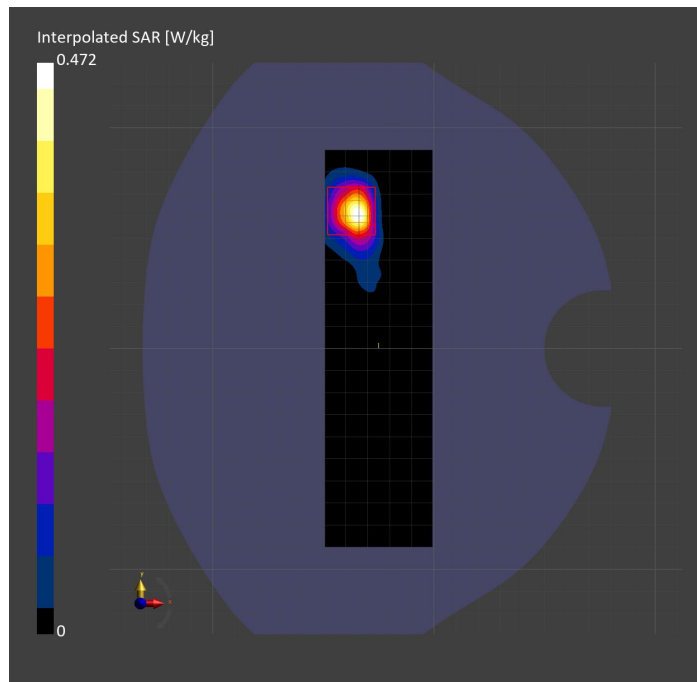
Probe Calibration Date	EX3DV4 - SN3929 2023-04-26	Phantom	Twin-SAM V5.0 (30deg probe tilt)
DAE Calibration Date	DAE4 Sn1675 2023-05-11	TSL Type	HBBL-600-10000
Software Version	16.2.4.2524		

Scan Setup

	Area Scan	Zoom Scan
Grid Extents [mm]	48.6 x 180.0	22.0 x 22.0 x 22.0
Grid Steps [mm]	8.1 x 10.0	4.0 x 4.0 x 1.4
Sensor Surface [mm]	3.0	1.4
Graded Grid	N/A	Yes
M2/M1 [%]		61.5
Dist 3dB Peak [mm]		5.6

Measurement Results

	Area Scan	Zoom Scan
psSAR1g [W/Kg]	0.109	0.107
psSAR10g [W/Kg]	0.034	0.023
Power Drift [dB]	N/A	0.04



Measurement Report for Custom Band: IEEE 802.15.1 Bluetooth (GFSK, DH5), BACK

Exposure Conditions

Band	Custom Band	TSL Permittivity	35.1
Frequency [MHz] Channel Number	5788.000 5788000	TSL Conductivity [S/m]	5.05
Group UID	CW 10032-CAA	Phantom Section TSL	Flat HSL
Conversion Factor	5.15	Test Distance [mm]	5.00

Hardware Setup

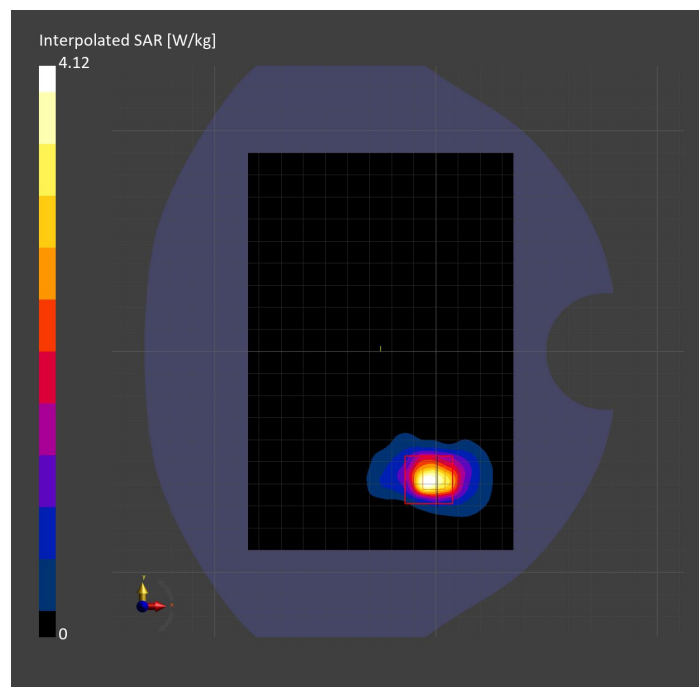
Probe Calibration Date	EX3DV4 - SN3902 2023-03-17	Phantom	Twin-SAM V5.0 (30deg probe tilt)
DAE Calibration Date	DAE4 Sn1797 2023-04-03	TSL Type	HBBL-600-10000
Software Version	16.2.4.2524		

Scan Setup

	Area Scan	Zoom Scan
Grid Extents [mm]	120.0 x 180.0	24.0 x 24.0 x 22.0
Grid Steps [mm]	10.0 x 10.0	4.0 x 4.0 x 1.4
Sensor Surface [mm]	3.0	1.4
Graded Grid	N/A	Yes
M2/M1 [%]		64.3
Dist 3dB Peak [mm]		6.4

Measurement Results

	Area Scan	Zoom Scan
psSAR1g [W/Kg]	0.953	1.05
psSAR10g [W/Kg]	0.302	0.294
Power Drift [dB]	N/A	0.09



Measurement Report for Custom Band: IEEE 802.15.1 Bluetooth (GFSK, DH5), TILT

Exposure Conditions

Band	Custom Band	TSL Permittivity	35.1
Frequency [MHz] Channel Number	5788.000 5788000	TSL Conductivity [S/m]	5.05
Group UID	CW 10032-CAA	Phantom Section TSL	RightHead HSL
Conversion Factor	5.15	Test Distance [mm]	0.00

Hardware Setup

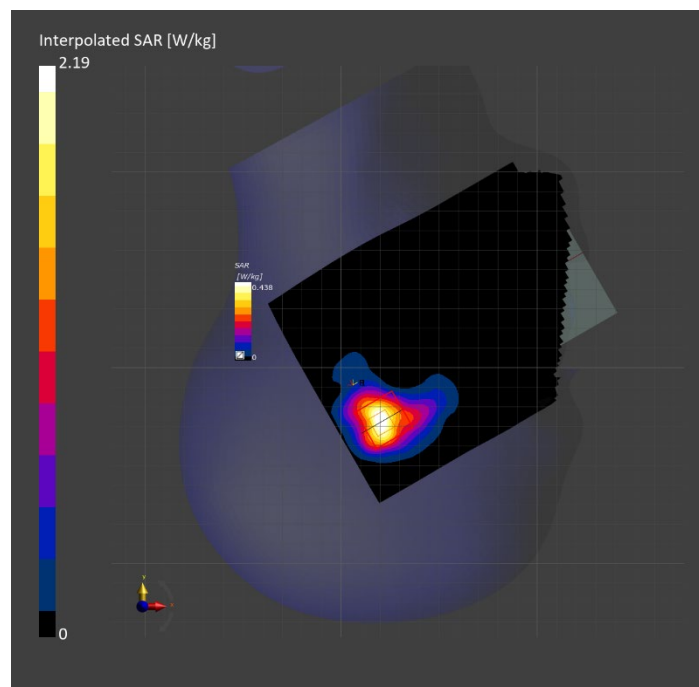
Probe Calibration Date	EX3DV4 - SN3902 2023-03-17	Phantom	Twin-SAM V5.0 (30deg probe tilt)
DAE Calibration Date	DAE4 Sn1797 2023-04-03	TSL Type	HBBL-600-10000
Software Version	16.2.4.2524		

Scan Setup

	Area Scan	Zoom Scan
Grid Extents [mm]	120.0 x 180.0	24.0 x 24.0 x 22.0
Grid Steps [mm]	10.0 x 10.0	4.0 x 4.0 x 1.4
Sensor Surface [mm]	3.0	1.4
Graded Grid	N/A	Yes
M2/M1 [%]		60.0
Dist 3dB Peak [mm]		6.1

Measurement Results

	Area Scan	Zoom Scan
psSAR1g [W/Kg]	0.464	0.506
psSAR10g [W/Kg]	0.157	0.157
Power Drift [dB]	N/A	-0.03



Measurement Report for Custom Band: IEEE 802.15.1 Bluetooth (GFSK, DH5), EDGE LEFT

Exposure Conditions

Band	Custom Band	TSL Permittivity	35.1
Frequency [MHz] Channel Number	5788.000 5788000	TSL Conductivity [S/m]	5.05
Group UID	CW 10032-CAA	Phantom Section TSL	Flat HSL
Conversion Factor	5.15	Test Distance [mm]	5.00

Hardware Setup

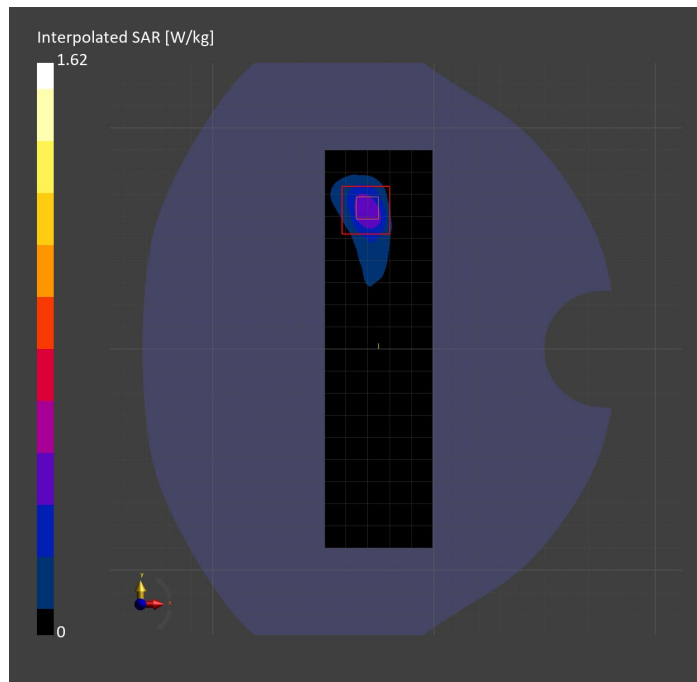
Probe Calibration Date	EX3DV4 - SN3902 2023-03-17	Phantom	Twin-SAM V5.0 (30deg probe tilt)
DAE Calibration Date	DAE4 Sn1797 2023-04-03	TSL Type	HBBL-600-10000
Software Version	16.2.4.2524		

Scan Setup

	Area Scan	Zoom Scan
Grid Extents [mm]	48.6 x 180.0	24.0 x 24.0 x 22.0
Grid Steps [mm]	8.1 x 10.0	4.0 x 4.0 x 1.4
Sensor Surface [mm]	3.0	1.4
Graded Grid	N/A	Yes
M2/M1 [%]		63.2
Dist 3dB Peak [mm]		6.5

Measurement Results

	Area Scan	Zoom Scan
psSAR1g [W/Kg]	0.378	0.400
psSAR10g [W/Kg]	0.124	0.112
Power Drift [dB]	N/A	-0.03



Measurement Report for Custom Band: CW, BACK

Exposure Conditions

Band	Custom Band	TSL Permittivity	40.4
Frequency [MHz] Channel Number	1617.600 1617600	TSL Conductivity [S/m]	1.23
Group UID	CW 0--	Phantom Section TSL	Flat HSL
Conversion Factor	8.86	Test Distance [mm]	5.00

Hardware Setup

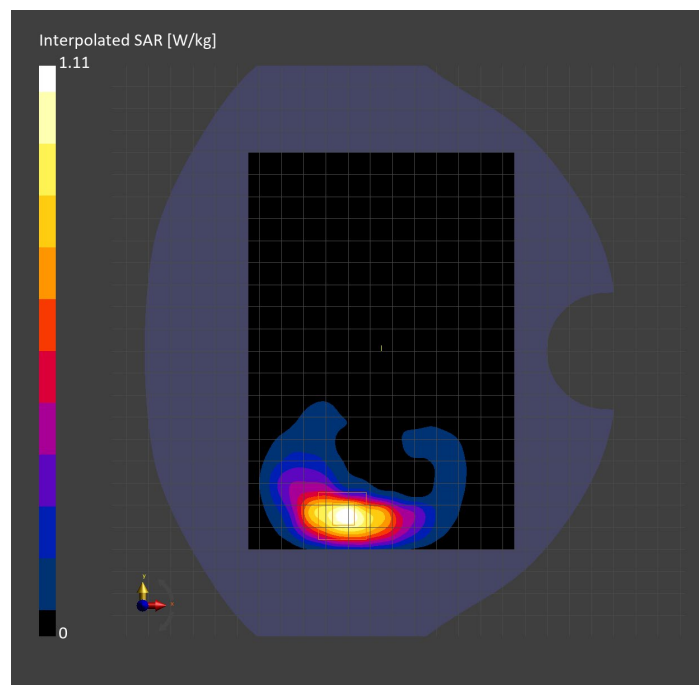
Probe Calibration Date	EX3DV4 - SN3989 2023-01-26	Phantom	Twin-SAM V8.0 (30deg probe tilt)
DAE Calibration Date	DAE4 Sn1257 2022-09-20	TSL Type	HBBL-600-10000
Software Version	16.2.4.2524		

Scan Setup

	Area Scan	Zoom Scan
Grid Extents [mm]	120.0 x 180.0	30.0 x 30.0 x 30.0
Grid Steps [mm]	15.0 x 15.0	6.0 x 6.0 x 1.5
Sensor Surface [mm]	3.0	1.4
Graded Grid	N/A	Yes
M2/M1 [%]		82.8
Dist 3dB Peak [mm]		7.6

Measurement Results

	Area Scan	Zoom Scan
psSAR1g [W/Kg]	0.600	0.596
psSAR10g [W/Kg]	0.313	0.306
Power Drift [dB]	N/A	-0.04



Measurement Report for Custom Band: CW, EDGE RIGHT

Exposure Conditions

Band	Custom Band	TSL Permittivity	40.4
Frequency [MHz] Channel Number	1625.100 1625100	TSL Conductivity [S/m]	1.24
Group UID	CW 0--	Phantom Section TSL	Flat HSL
Conversion Factor	8.86	Test Distance [mm]	5.00

Hardware Setup

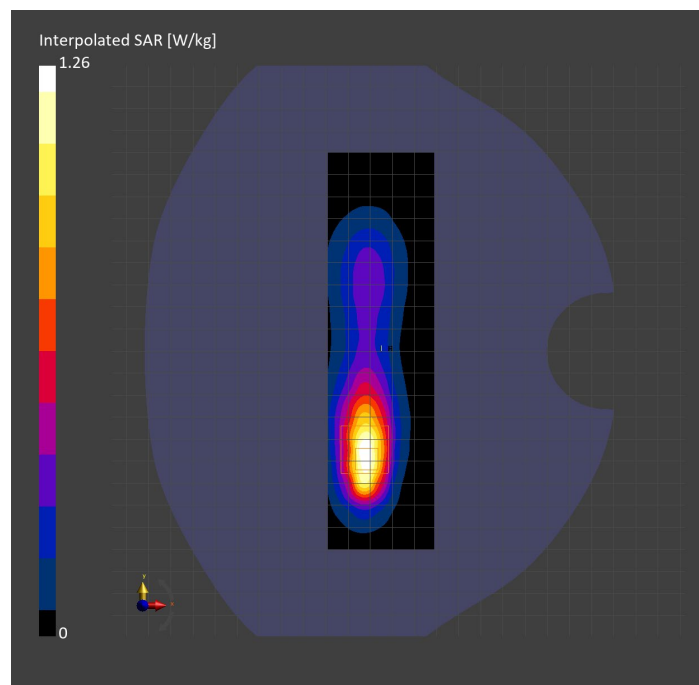
Probe Calibration Date	EX3DV4 - SN3989 2023-01-26	Phantom	Twin-SAM V8.0 (30deg probe tilt)
DAE Calibration Date	DAE4 Sn1257 2022-09-20	TSL Type	HBBL-600-10000
Software Version	16.2.4.2524		

Scan Setup

	Area Scan	Zoom Scan
Grid Extents [mm]	48.0 x 180.0	30.0 x 30.0 x 30.0
Grid Steps [mm]	8.0 x 15.0	6.0 x 6.0 x 1.5
Sensor Surface [mm]	3.0	1.4
Graded Grid	N/A	Yes
M2/M1 [%]		86.1
Dist 3dB Peak [mm]		8.1

Measurement Results

	Area Scan	Zoom Scan
psSAR1g [W/Kg]	0.713	0.706
psSAR10g [W/Kg]	0.364	0.365
Power Drift [dB]	N/A	-0.03



Measurement Report for Thread 2.4 GHz (802.15.4): CW, CHEEK

Exposure Conditions

Band	Thread 2.4 GHz (802.15.4)	TSL Permittivity	37.3
Frequency [MHz] Channel Number	2440.000 Mid	TSL Conductivity [S/m]	1.87
Group UID	CW 0--	Phantom Section TSL	LeftHead HSL
Conversion Factor	7.33	Test Distance [mm]	0.00

Hardware Setup

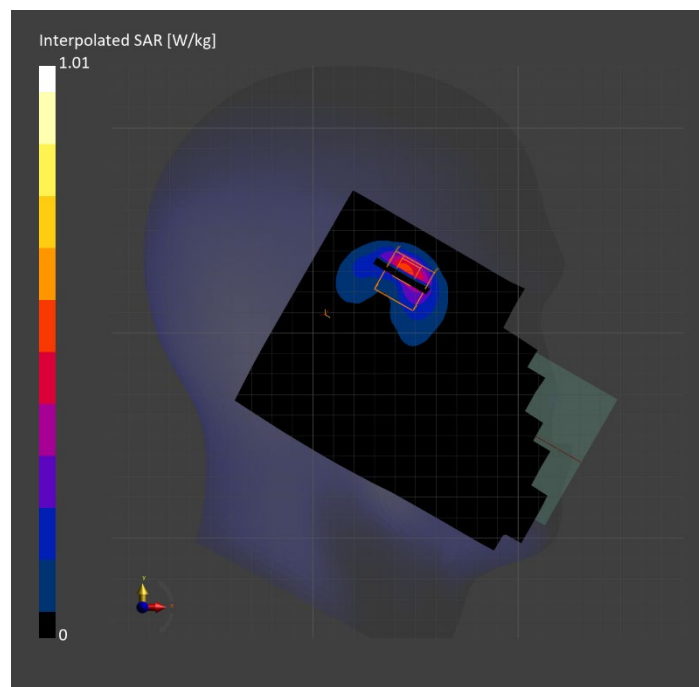
Probe Calibration Date	EX3DV4 - SN3772 2023-02-13	Phantom	Twin-SAM V8.0 (30deg probe tilt)
DAE Calibration Date	DAE4 Sn1359 2023-01-24	TSL Type	HBBL-600-10000
Software Version	16.2.4.2524		

Scan Setup

	Area Scan	Zoom Scan
Grid Extents [mm]	120.0 x 180.0	30.0 x 30.0 x 30.0
Grid Steps [mm]	10.0 x 10.0	5.0 x 5.0 x 1.5
Sensor Surface [mm]	3.0	1.4
Graded Grid	N/A	Yes
M2/M1 [%]		75.9
Dist 3dB Peak [mm]		6.1

Measurement Results

	Area Scan	Zoom Scan
psSAR1g [W/Kg]	0.377	0.402
psSAR10g [W/Kg]	0.164	0.165
Power Drift [dB]	N/A	0.04



Measurement Report for Thread 2.4 GHz (802.15.4): CW, BACK

Exposure Conditions

Band	Thread 2.4 GHz (802.15.4)	TSL Permittivity	37.3
Frequency [MHz] Channel Number	2440.000 Mid	TSL Conductivity [S/m]	1.87
Group UID	CW 0--	Phantom Section TSL	Flat HSL
Conversion Factor	7.33	Test Distance [mm]	5.00

Hardware Setup

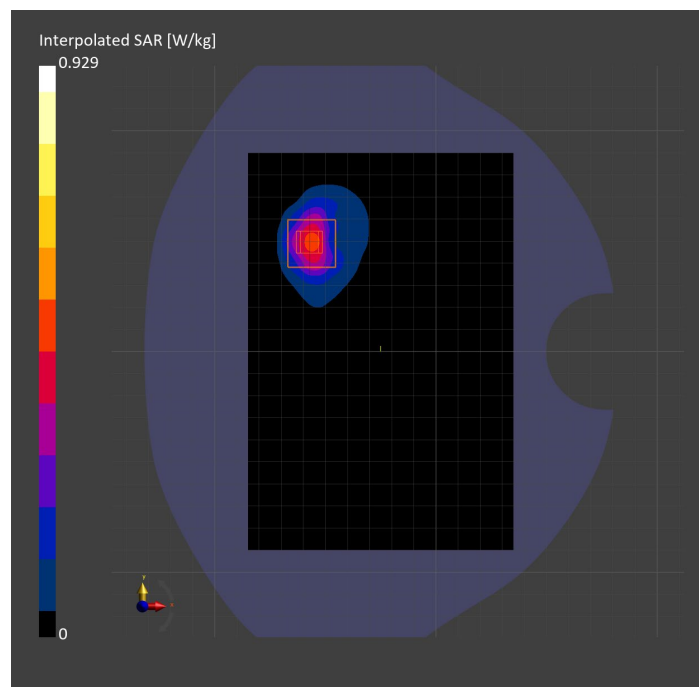
Probe Calibration Date	EX3DV4 - SN3772 2023-02-13	Phantom	Twin-SAM V8.0 (30deg probe tilt)
DAE Calibration Date	DAE4 Sn1359 2023-01-24	TSL Type	HBBL-600-10000
Software Version	16.2.4.2524		

Scan Setup

	Area Scan	Zoom Scan
Grid Extents [mm]	120.0 x 180.0	30.0 x 30.0 x 30.0
Grid Steps [mm]	10.0 x 10.0	5.0 x 5.0 x 1.5
Sensor Surface [mm]	3.0	1.4
Graded Grid	N/A	Yes
M2/M1 [%]		76.7
Dist 3dB Peak [mm]		6.4

Measurement Results

	Area Scan	Zoom Scan
psSAR1g [W/Kg]	0.386	0.401
psSAR10g [W/Kg]	0.172	0.166
Power Drift [dB]	N/A	-0.00



Measurement Report for Thread 2.4 GHz (802.15.4): CW, EDGE RIGHT

Exposure Conditions

Band	Thread 2.4 GHz (802.15.4)	TSL Permittivity	37.3
Frequency [MHz] Channel Number	2440.000 Mid	TSL Conductivity [S/m]	1.87
Group UID	CW 0--	Phantom Section TSL	Flat HSL
Conversion Factor	7.33	Test Distance [mm]	5.00

Hardware Setup

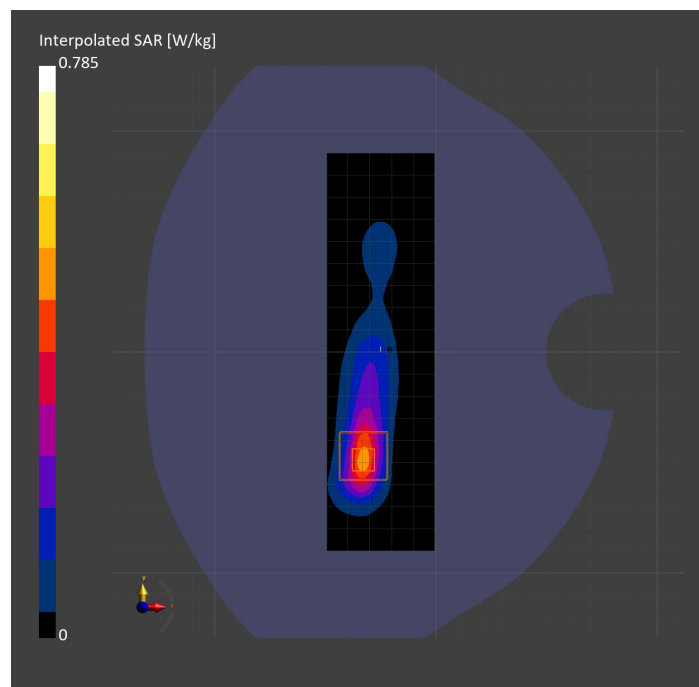
Probe Calibration Date	EX3DV4 - SN3772 2023-02-13	Phantom	Twin-SAM V8.0 (30deg probe tilt)
DAE Calibration Date	DAE4 Sn1359 2023-01-24	TSL Type	HBBL-600-10000
Software Version	16.2.4.2524		

Scan Setup

	Area Scan	Zoom Scan
Grid Extents [mm]	48.6 x 180.0	30.0 x 30.0 x 30.0
Grid Steps [mm]	8.1 x 10.0	5.0 x 5.0 x 1.5
Sensor Surface [mm]	3.0	1.4
Graded Grid	N/A	Yes
M2/M1 [%]		79.7
Dist 3dB Peak [mm]		7.0

Measurement Results

	Area Scan	Zoom Scan
psSAR1g [W/Kg]	0.365	0.358
psSAR10g [W/Kg]	0.156	0.150
Power Drift [dB]	N/A	-0.06



Measurement Report for 802.15.4ab: Pulse Waveform (200Hz, 10%), BACK

Exposure Conditions

Band	802.15.4ab	TSL Permittivity	34.2
Frequency [MHz] Channel Number	5786.300 18	TSL Conductivity [S/m]	5.01
Group UID	CW 10658-AAB	Phantom Section TSL	Flat HSL
Conversion Factor	4.86	Test Distance [mm]	5.00

Hardware Setup

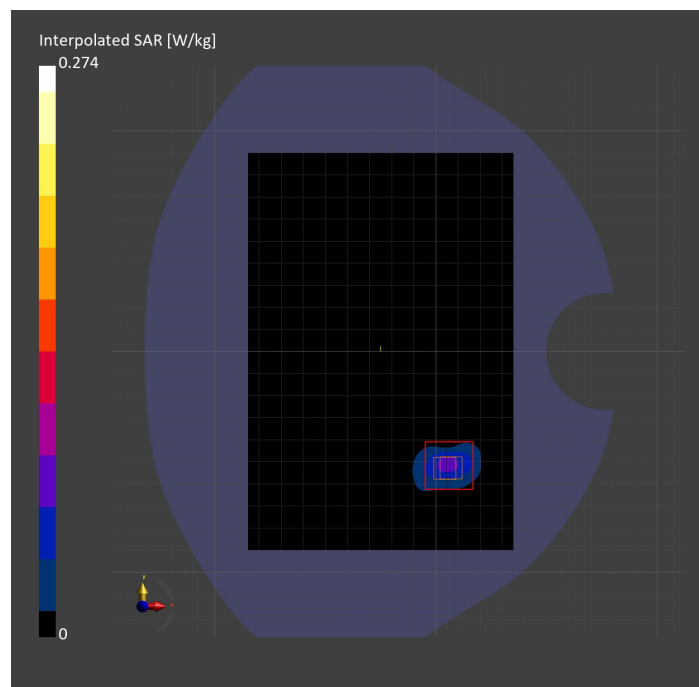
Probe Calibration Date	EX3DV4 - SN7810 2023-04-25	Phantom	Twin-SAM V8.0 (30deg probe tilt)
DAE Calibration Date	DAE4 Sn1439 2023-03-16	TSL Type	HBBL-600-10000
Software Version	16.2.4.2524		

Scan Setup

	Area Scan	Zoom Scan	Secondary Zoom Scan
Grid Extents [mm]	120.0 x 180.0	24.0 x 24.0 x 22.0	24.0 x 24.0 x 22.0
Grid Steps [mm]	10.0 x 10.0	4.0 x 4.0 x 1.4	4.0 x 4.0 x 1.4
Sensor Surface [mm]	3.0	1.4	1.4
Graded Grid	N/A	Yes	Yes
M2/M1 [%]		64.6	62.3
Dist 3dB Peak [mm]		6.4	5.6

Measurement Results

	Area Scan	Zoom Scan	Secondary Zoom Scan
psSAR1g [W/Kg]	0.055	0.066	0.064
psSAR10g [W/Kg]	0.017	0.019	0.017
Power Drift [dB]	N/A	0.33	0.11



Measurement Report for 802.15.4ab: Pulse Waveform (200Hz, 10%), CHEEK

Exposure Conditions

Band	802.15.4ab	TSL Permittivity	34.2
Frequency [MHz] Channel Number	5786.300 18	TSL Conductivity [S/m]	5.01
Group UID	CW 10658-AAB	Phantom Section TSL	RightHead HSL
Conversion Factor	4.86	Test Distance [mm]	0.00

Hardware Setup

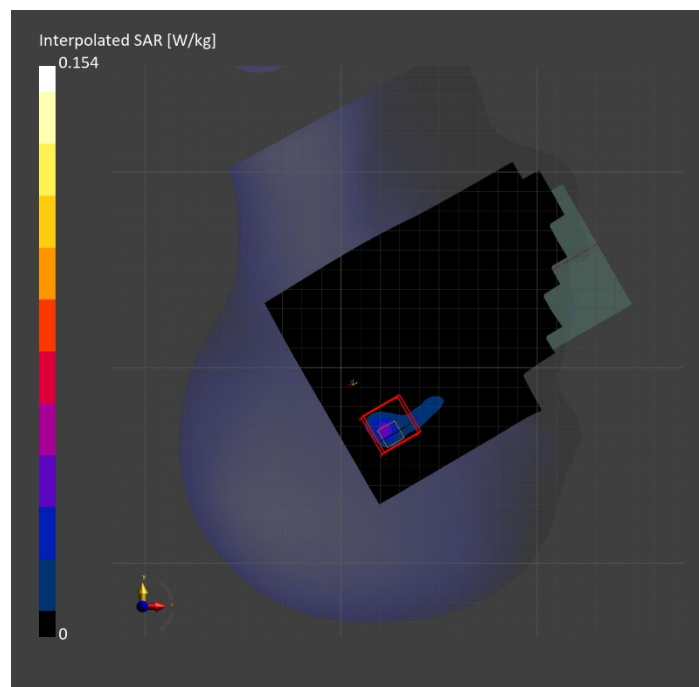
Probe Calibration Date	EX3DV4 - SN7810 2023-04-25	Phantom	Twin-SAM V8.0 (30deg probe tilt)
DAE Calibration Date	DAE4 Sn1439 2023-03-16	TSL Type	HBBL-600-10000
Software Version	16.2.4.2524		

Scan Setup

	Area Scan	Zoom Scan	Secondary Zoom Scan
Grid Extents [mm]	120.0 x 180.0	24.0 x 24.0 x 22.0	24.0 x 24.0 x 22.0
Grid Steps [mm]	10.0 x 10.0	4.0 x 4.0 x 1.4	4.0 x 4.0 x 1.4
Sensor Surface [mm]	3.0	1.4	1.4
Graded Grid	N/A	Yes	Yes
M2/M1 [%]		60.5	56.6
Dist 3dB Peak [mm]		3.4	3.4

Measurement Results

	Area Scan	Zoom Scan	Secondary Zoom Scan
psSAR1g [W/Kg]	0.029	0.025	0.026
psSAR10g [W/Kg]	0.008	0.005	0.005
Power Drift [dB]	N/A	-0.51	1.77



Measurement Report for 802.15.4ab: Pulse Waveform (200Hz, 10%), EDGE LEFT

Exposure Conditions

Band	802.15.4ab	TSL Permittivity	34.2
Frequency [MHz] Channel Number	5786.300 18	TSL Conductivity [S/m]	5.01
Group UID	CW 10658-AAB	Phantom Section TSL	Flat HSL
Conversion Factor	4.86	Test Distance [mm]	5.00

Hardware Setup

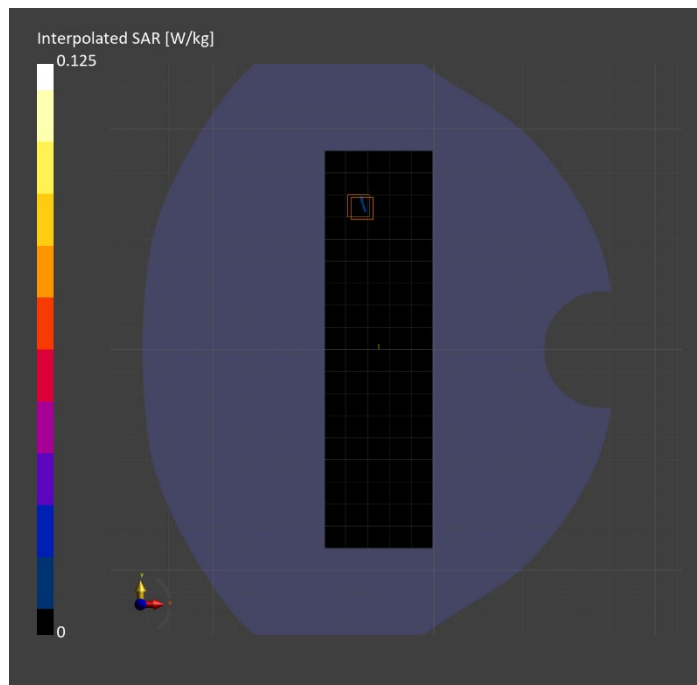
Probe Calibration Date	EX3DV4 - SN7810 2023-04-25	Phantom	Twin-SAM V8.0 (30deg probe tilt)
DAE Calibration Date	DAE4 Sn1439 2023-03-16	TSL Type	HBBL-600-10000
Software Version	16.2.4.2524		

Scan Setup

	Area Scan	Zoom Scan	Secondary Zoom Scan
Grid Extents [mm]	48.6 x 180.0	24.0 x 24.0 x 22.0	24.0 x 24.0 x 22.0
Grid Steps [mm]	8.1 x 10.0	4.0 x 4.0 x 1.4	4.0 x 4.0 x 1.4
Sensor Surface [mm]	3.0	1.4	1.4
Graded Grid	N/A	Yes	Yes
M2/M1 [%]		71.0	25.7
Dist 3dB Peak [mm]		2.3	1.8

Measurement Results

	Area Scan	Zoom Scan	Secondary Zoom Scan
psSAR1g [W/Kg]	0.005	0.003	0
psSAR10g [W/Kg]	0	0	0
Power Drift [dB]	N/A	-8.26	-1.54



Measurement Report for Custom Band: CW, EDGE TOP

Exposure Conditions

Band	Custom Band	TSL Permittivity	57.2
Frequency [MHz] Channel Number	13.600 13600	TSL Conductivity [S/m]	0.727
Group UID	CW 0--	Phantom Section TSL	Flat HSL
Conversion Factor	19.03	Test Distance [mm]	0.00

Hardware Setup

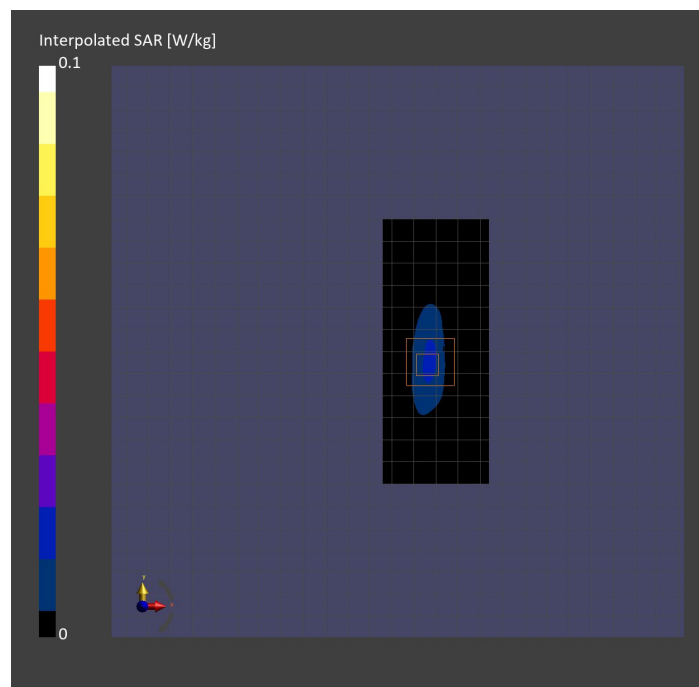
Probe Calibration Date	EX3DV4 - SN3989 2023-01-26	Phantom	ELI V8.0 (20deg probe tilt)
DAE Calibration Date	DAE4 Sn1257 2022-09-20	TSL Type	HBBL4-250V3
Software Version	16.2.4.2524		

Scan Setup

	Area Scan	Zoom Scan
Grid Extents [mm]	48.0 x 120.0	30.0 x 30.0 x 30.0
Grid Steps [mm]	8.0 x 15.0	6.0 x 6.0 x 1.5
Sensor Surface [mm]	3.0	1.4
Graded Grid	N/A	Yes
M2/M1 [%]		59.0
Dist 3dB Peak [mm]		6.0

Measurement Results

	Area Scan	Zoom Scan
psSAR1g [W/Kg]	0.016	0.016
psSAR10g [W/Kg]	0.01	0.005
Power Drift [dB]	N/A	-0.02



Band 14: LTE-FDD (SC-FDMA, 1 RB, 10 MHz, QPSK) RBPosition:Mid AntennaCfg:SISO, BACK

Exposure Conditions

Band	Band 14	TSL Permittivity	43.5
Frequency [MHz] Channel Number	793.000 23330	TSL Conductivity [S/m]	0.891
Group UID	LTE-FDD 10175-CAH	Phantom Section TSL	Flat HSL
Conversion Factor	8.6	Test Distance [mm]	25.00

Hardware Setup

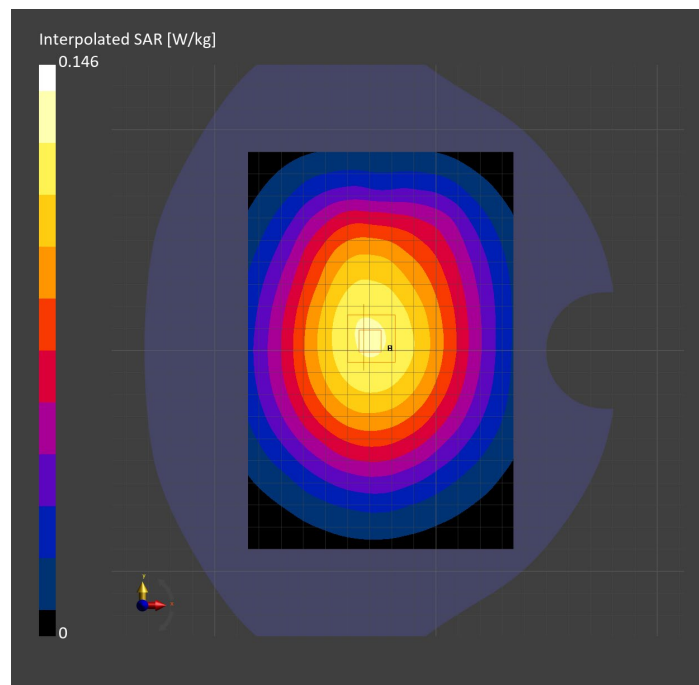
Probe Calibration Date	EX3DV4 - SN3749 2023-01-27	Phantom	Twin-SAM V8.0 (30deg probe tilt)
DAE Calibration Date	DAE4 Sn1784 2023-04-03	TSL Type	HBBL-600-10000
Software Version	16.2.4.2524		

Scan Setup

	Area Scan	Zoom Scan
Grid Extents [mm]	120.0 x 180.0	30.0 x 30.0 x 30.0
Grid Steps [mm]	15.0 x 15.0	6.0 x 6.0 x 1.5
Sensor Surface [mm]	3.0	1.4
Graded Grid	N/A	Yes
M2/M1 [%]		92.4
Dist 3dB Peak [mm]		> 15.0
Peak SAR [W/kg] SAR Peak Location [mm]	N/A	0.146 [-32.5, -1.8, -207.0]

Measurement Results

	Area Scan	Zoom Scan
psSAR1g [W/Kg]	0.110	0.115
psSAR10g [W/Kg]	0.078	0.089
Power Drift [dB]	N/A	0.01



Band n77: 5G NR (DFT-s-OFDM, 1 RB, 100 MHz, QPSK, 30 kHz) RBPosition:Mid AntennaCfg:SISO, BACK

Exposure Conditions

Band	Band n77	TSL Permittivity	39.6
Frequency [MHz] Channel Number	3499.980 633332	TSL Conductivity [S/m]	2.79
Group UID	5G NR FR1 TDD 10866-AAF	Phantom Section TSL	Flat HSL
Conversion Factor	6.78	Test Distance [mm]	25.00

Hardware Setup

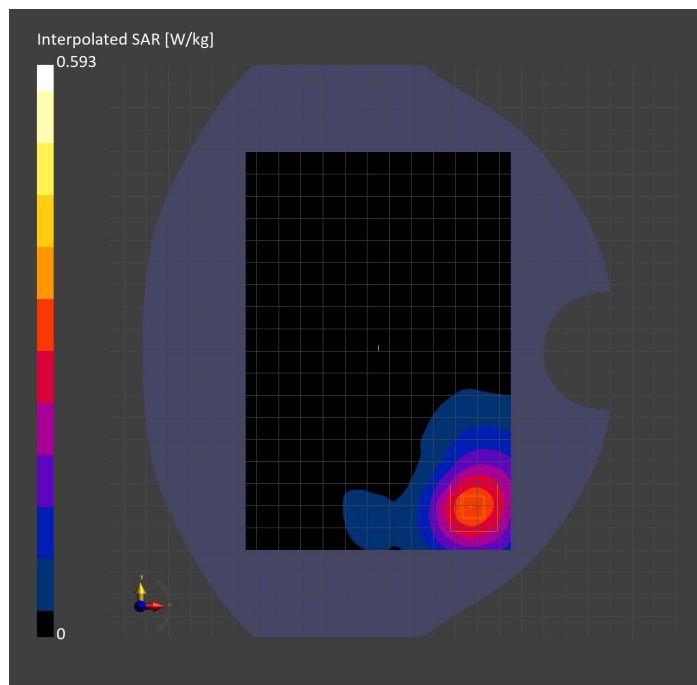
Probe Calibration Date	EX3DV4 - SN3989 2023-01-26	Phantom	Twin-SAM V8.0 (30deg probe tilt)
DAE Calibration Date	DAE4 Sn1547 2023-04-18	TSL Type	HBBL-600-10000
Software Version	16.2.4.2524		

Scan Setup

	Area Scan	Zoom Scan	Secondary Zoom Scan
Grid Extents [mm]	120.0 x 180.0	30.0 x 30.0 x 28.0	30.0 x 30.0 x 28.0
Grid Steps [mm]	10.0 x 10.0	5.0 x 5.0 x 1.4	5.0 x 5.0 x 1.4
Sensor Surface [mm]	3.0	1.4	1.4
Graded Grid	N/A	Yes	Yes
M2/M1 [%]		77.7	78.1
Dist 3dB Peak [mm]		17.3	16.5
Peak SAR [W/kg] SAR Peak Location [mm]	N/A	0.592 [17.0, -71.0, -207.0]	0.581 [17.0, -71.0, -207.0]

Measurement Results

	Area Scan	Zoom Scan	Secondary Zoom Scan
psSAR1g [W/Kg]	0.266	0.277	0.275
psSAR10g [W/Kg]	0.132	0.139	0.139
Power Drift [dB]	N/A	5.70	N/A



Custom Band: CW, EDGE BOTTOM

Exposure Conditions

Band	Custom Band	TSL Permittivity	40.9
Frequency [MHz] Channel Number	1617.600 262391	TSL Conductivity [S/m]	1.23
Group UID	CW 0--	Phantom Section TSL	Flat HSL
Conversion Factor	8.86	Test Distance [mm]	25.00

Hardware Setup

Probe Calibration Date	EX3DV4 - SN3989 2023-01-26	Phantom	Twin-SAM V8.0 (30deg probe tilt)
DAE Calibration Date	DAE4 Sn1547 2023-04-18	TSL Type	HBBL-600-10000
Software Version	16.2.4.2524		

Scan Setup

	Area Scan	Zoom Scan
Grid Extents [mm]	48.6 x 120.0	30.0 x 30.0 x 30.0
Grid Steps [mm]	8.1 x 15.0	6.0 x 6.0 x 1.5
Sensor Surface [mm]	3.0	1.4
Graded Grid	N/A	Yes
M2/M1 [%]		86.6
Dist 3dB Peak [mm]		16.7
Peak SAR [W/kg] SAR Peak Location [mm]	N/A	0.642 [-28.5, -9.9, -207.0]

Measurement Results

	Area Scan	Zoom Scan
psSAR1g [W/Kg]	0.407	0.419
psSAR10g [W/Kg]	0.244	0.266
Power Drift [dB]	N/A	-0.03

