

FIGURE 1
PRINTER (M/N: RICOH Ri 100)
COVER REMOVED #1



FIGURE 2
PRINTER (M/N: RICOH Ri 100)
COVER REMOVED #2



FIGURE 3
PRINTER (M/N: RICOH Ri 100)
FAN LABEL



FIGURE 4
PRINTER (M/N: RICOH RI 100)
MAIN BOARD (COMPONENT SIDE)



FIGURE 5
PRINTER (M/N: RICOH RI 100)
MAIN BOARD (SOLDERED SIDE)



FIGURE 6
PRINTER (M/N: RICOH Ri 100)
CHIP#1 AND CRYSTAL#1 ON MAIN BOARD

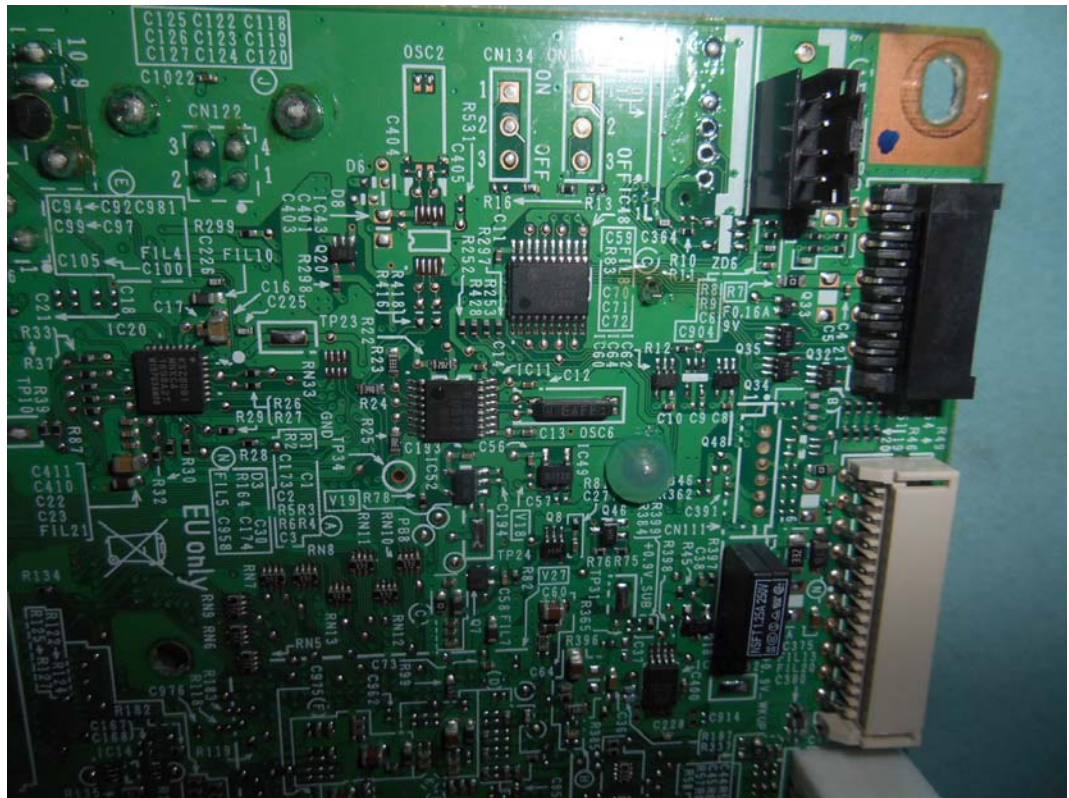


FIGURE 7
PRINTER (M/N: RICOH Ri 100)
CHIP #2 AND CRYSTAL #2 ON MAIN BOARD

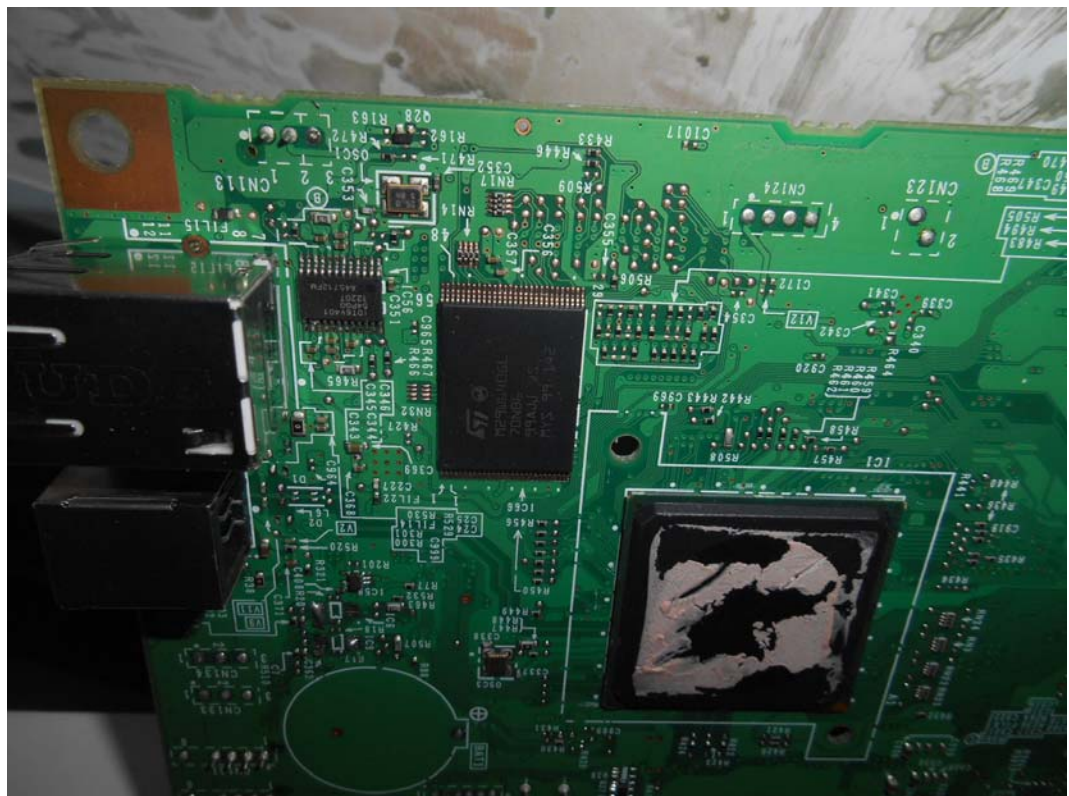


FIGURE 8
PRINTER (M/N: RICOH RI 100)
CHIP #3 AND CRYSTAL #3 ON MAIN BOARD

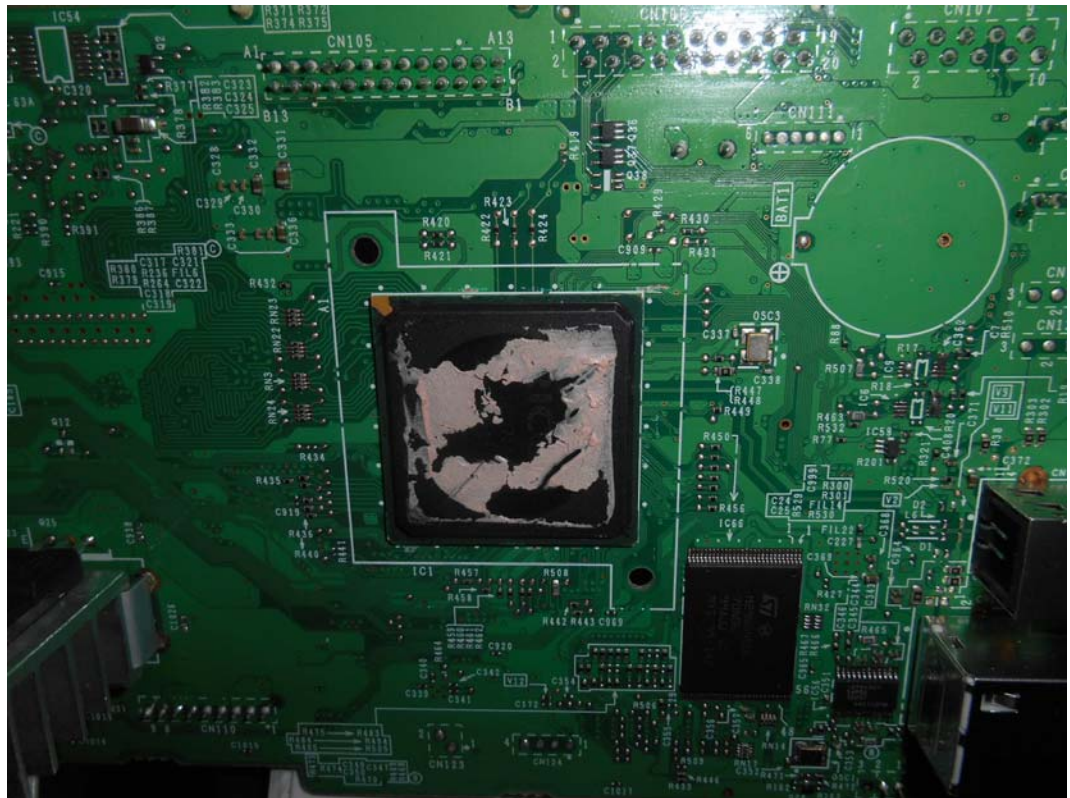


FIGURE 9
PRINTER (M/N: RICOH Ri 100)
POWER BOARD (COMPONENT SIDE)

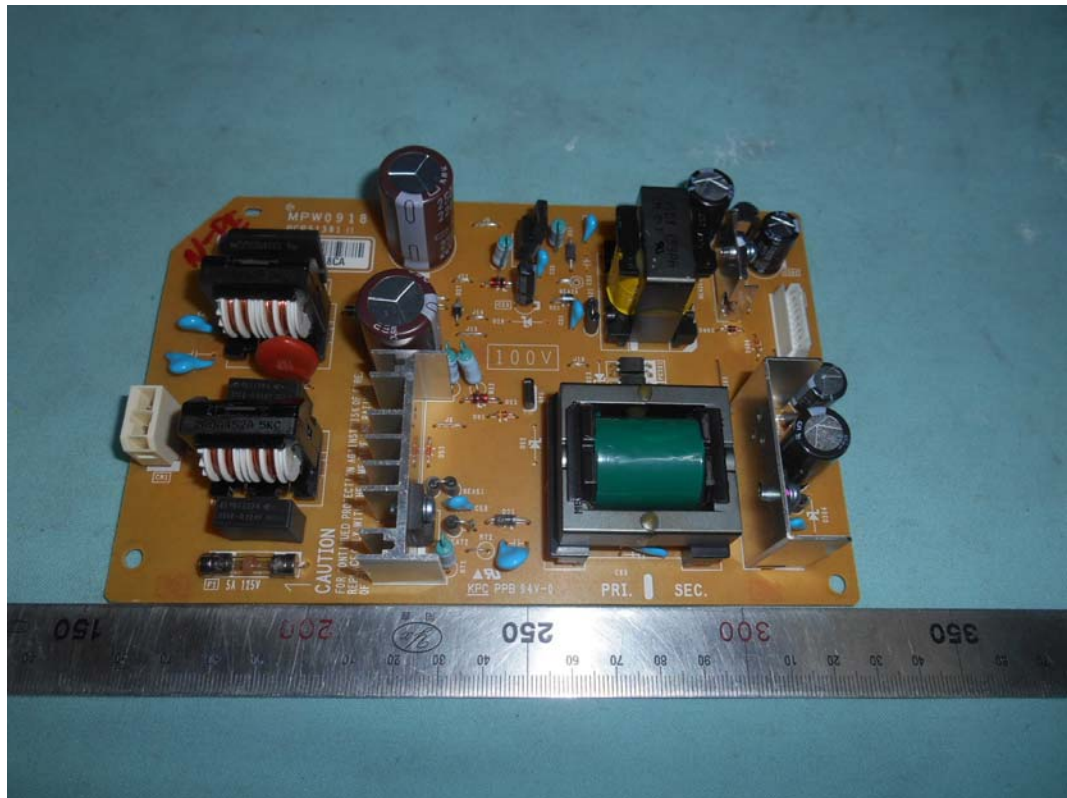


FIGURE 10
PRINTER (M/N: RICOH Ri 100)
POWER BOARD (SOLDERED SIDE)

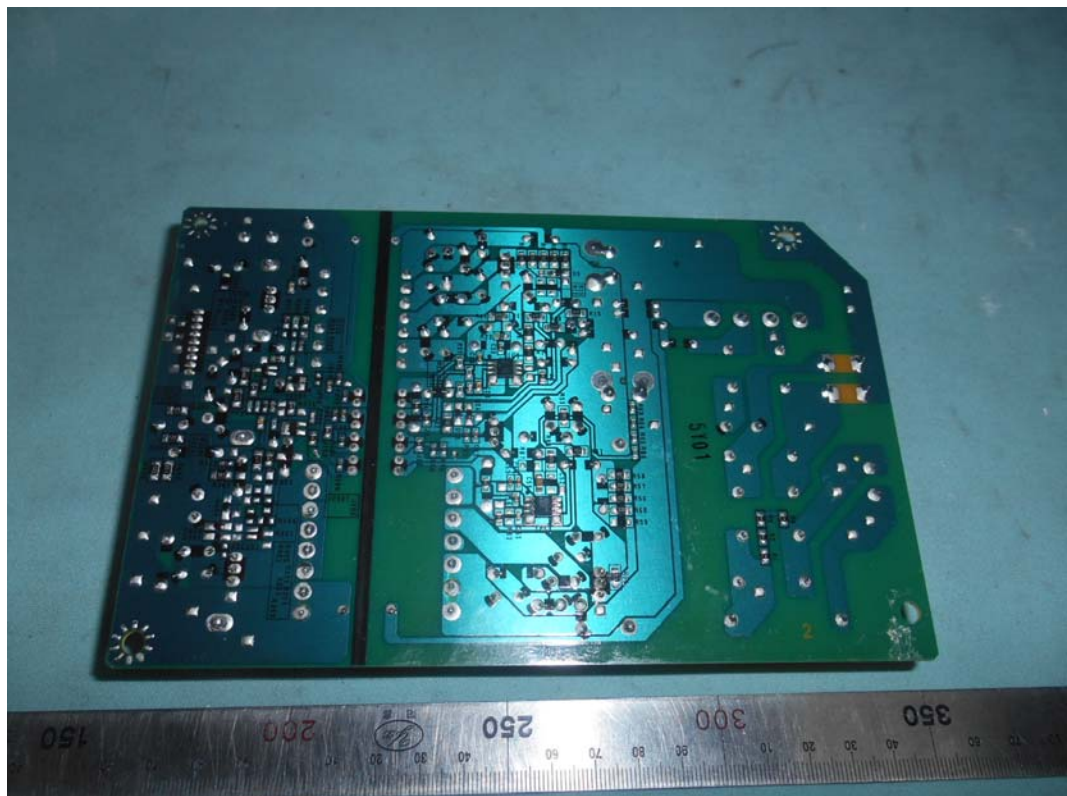


FIGURE 11
PRINTER (M/N: RICOH RI 100)
WIFI BOARD (COMPONENT SIDE)



FIGURE 12
PRINTER (M/N: RICOH RI 100)
WIFI BOARD (SOLDERED SIDE)



FIGURE 13
PRINTER (M/N: RICOH Ri 100)
WIFI LABEL



FIGURE 14
PRINTER (M/N: RICOH Ri 100)
PANEL COVER REMOVED

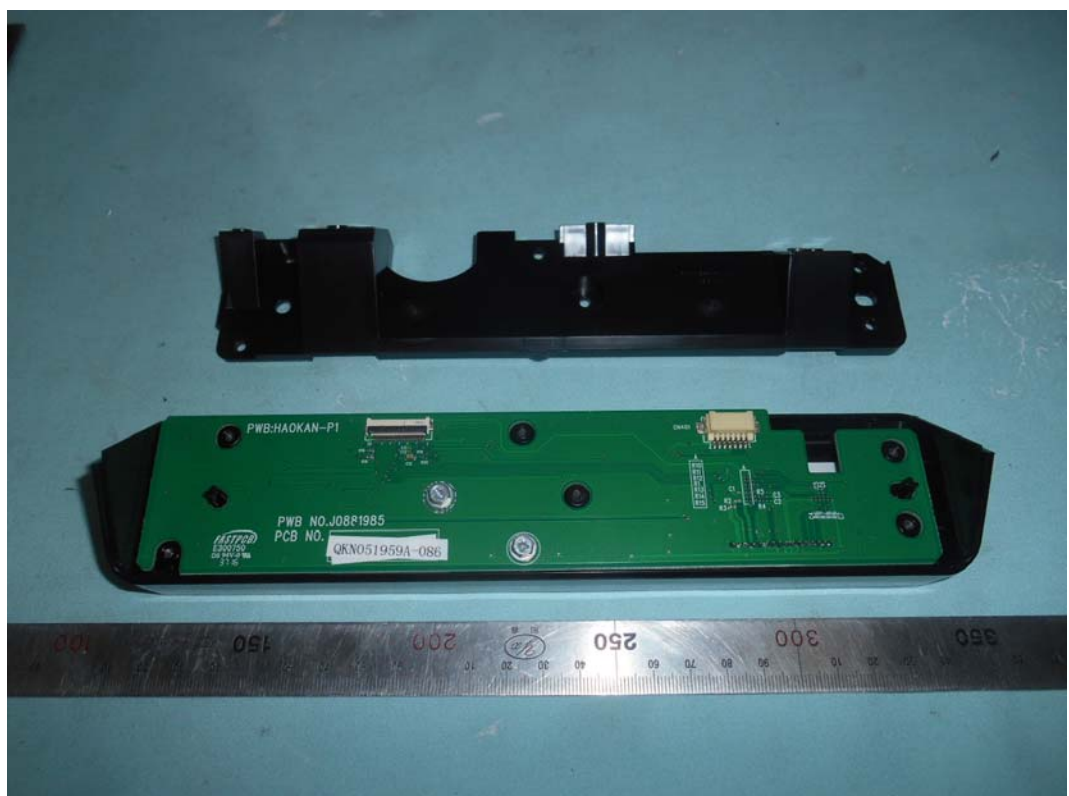


FIGURE 15
PRINTER (M/N: RICOH Ri 100)
PANEL BOARD (COMPONENT SIDE)

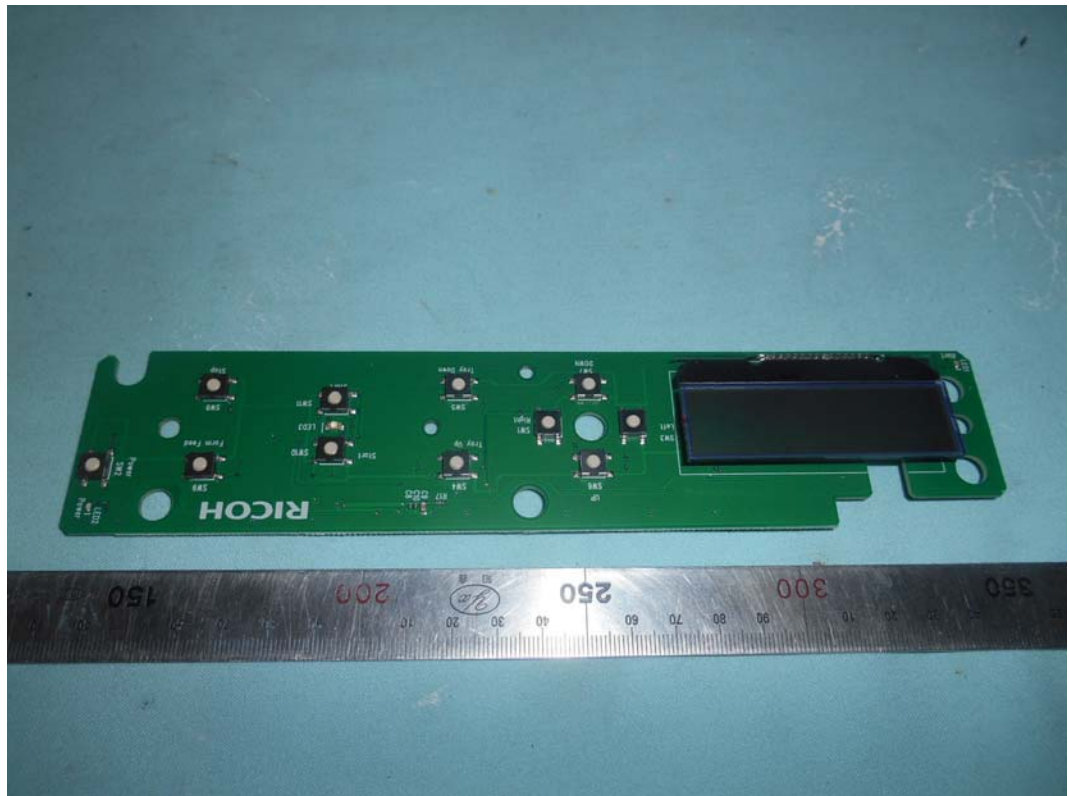


FIGURE 16
PRINTER (M/N: RICOH Ri 100)
PANEL BOARD (SOLDERED SIDE)

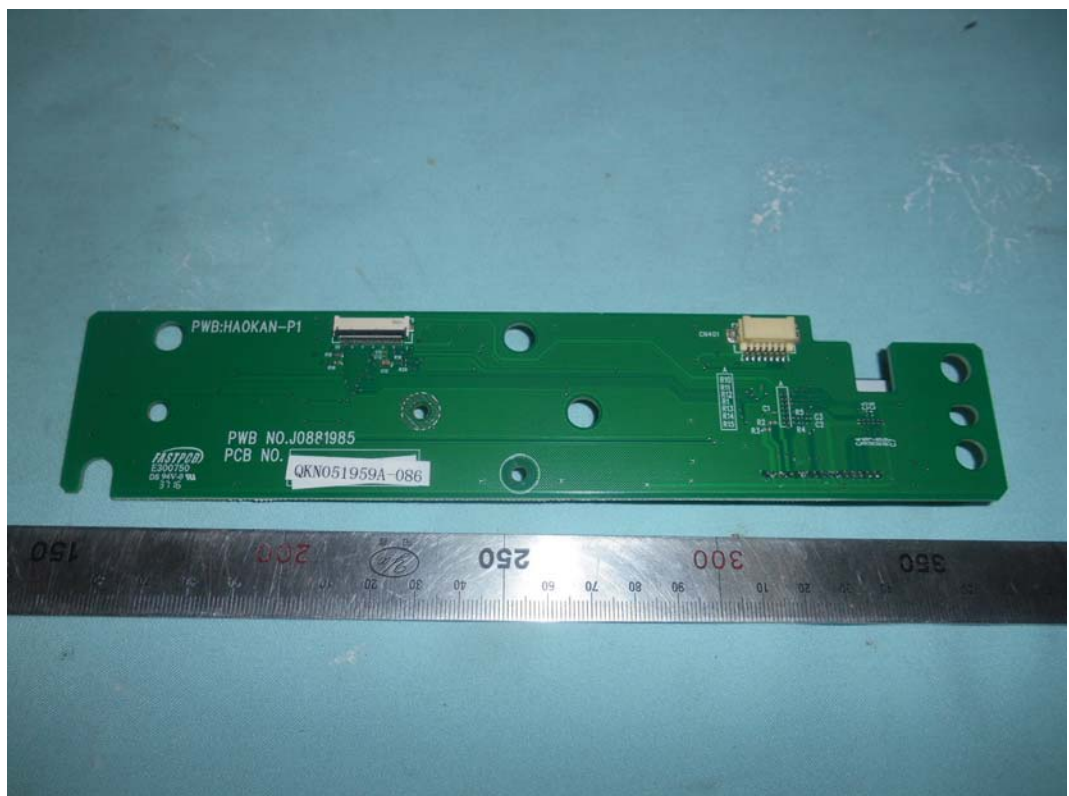
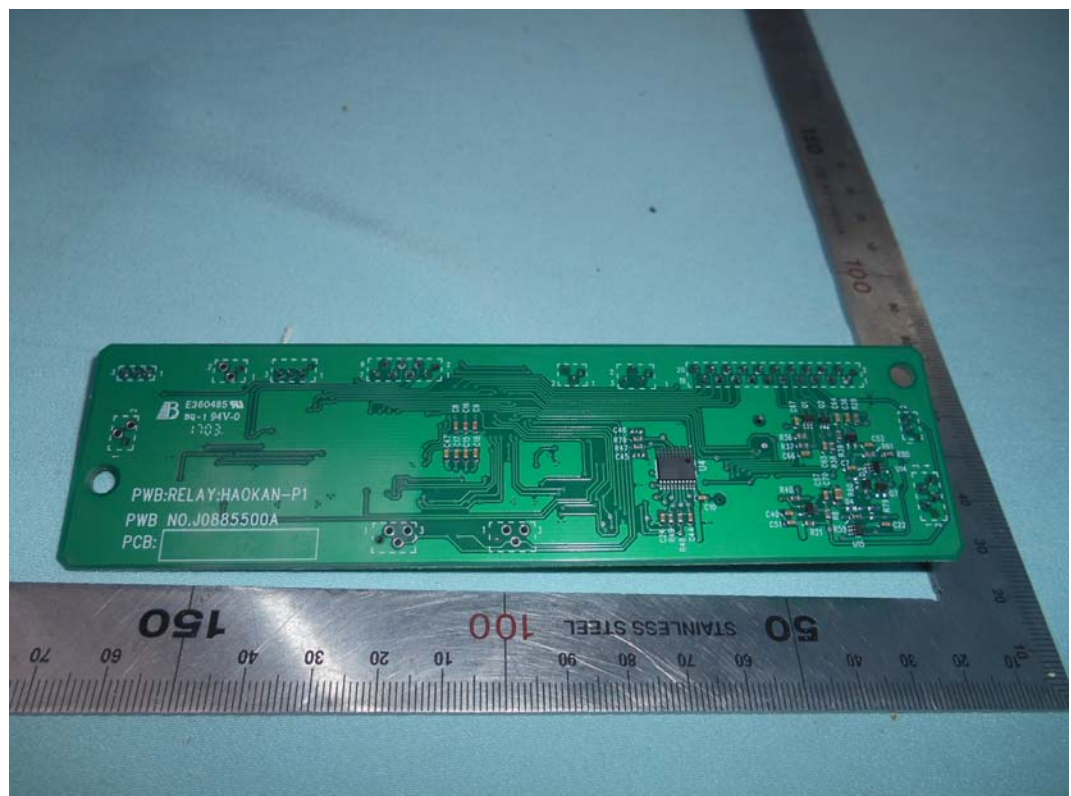


FIGURE 17
PRINTER (M/N: RICOH Ri 100)
BOARD#1 (COMPONENT SIDE)



FIGURE 18
PRINTER (M/N: RICOH Ri 100)
BOARD#1 (SOLDERED SIDE)



The image shows a custom green printed circuit board (PCB) with a complex, irregular shape featuring a large central circular cutout. The board is populated with various electronic components including resistors, capacitors, and integrated circuits. A large silver heat sink is mounted on the left side. The PCB is placed on a blue surface next to a wooden ruler for scale. Text labels on the board include "PWB NO. J0885512A", "PCB:", "PWB: LIT-HAOKAN-PI", and "CN931".

FIGURE 21
PRINTER (M/N: RICOH Ri 100)
DEBUG#1



FIGURE 22
PRINTER (M/N: RICOH Ri 100)
DEBUG#2

