

**Battery Cavity, location of labels.**

Model RD02-0330  
 852B-RD02D330  
 MM01BRD02D330

GNX-RD02-0330

**ANATEL** NTC  
 Type Approved  
 0450 - 07 - 1675 No: ESD-CPE-0801233

(01) 07893552001136

**TELEPERMIT**  
 This Conexant RD02-0460  
 PSTN Modem may be  
 connected to the Telecom  
 Network.  
 PTC: 211 / 05 / 082

RN = 1

型号: RD02-0330  
 CCC  
 制造地: 中国  
 SUBTEL 3770  
 CNC- 54-4512

**NOM** NYCE  
 Approved by  
 RTA  
 2006 Year

TE-2005/189  
 ICN-5A  
 APPROVED

SCT TTDCORD06-597

CCAB06M10010T1  
 03005/POSTEL/2006  
 2025

CMA 1998  
**AT622047 G**

Contains Intel WLAN  
 Radio Model 4965AGN MM1

Contains FCC ID: B944965AGN  
 IC: 466Q-4965AGN

Complies with IDA  
 Standards:  
 DB 02941

This device complies with Part 15 of  
 the FCC Rules. Operation is subject to  
 the following two conditions:  
 (1) This device may not cause harmful  
 interference, and  
 (2) this device must accept  
 any interference received,  
 including interference  
 that may cause  
 undesired operation.

N232

CCA06LP0010T1

**KELAS**  
 CMA 1998  
**AN547223 C**





(輸入/輸入) INPUT: 18.5Vdc 3.5A



筆記型電腦/筆記本電腦  
MODEL (型號/型号): HSTNN-W26C



This Class B digital apparatus  
complies with Canadian ICES-003  
Cet appareil numérique de la classe  
B est conforme à la norme  
MB-003 du Canada



Apparatus claims of U.S. Patent Nos. 4,631,603;  
4,819,098; 4,907,093; 5,315,448; and 6,516,132.  
licensed for limited viewing uses only

R33001



LISTED 7K85  
Information  
Technology  
Equipment  
E145483



HPK-HSTNN-W26C(B) 廢電池請回收



Product of China

中國製造/中國制造 CM-2



60.4R810.001 MV1  
070609 CTC

Wireless label, behind door

Broadcom BCM92045NMD  
379191-002

30211POSTEL2005 1921	2.4GHz	2233	Complies with IDA Standards DA102885
-------------------------	--------	------	--------------------------------------------

Contains FCC ID: Q05-BRCM1018  
IC: 4324A-BRCM1018  
SCT: RCPBRBC05-734  
CM II ID: 2005DJ0891  
CNC: 16-4062

ANATEL  
N12075  
0860-05-1889

CE  
TA-2008130  
APPROVED

AP 101590 C

REPLACE WITH  
HP SPARE  
454685-001  
910765



Broadcom BCM92045NMD  
379191-002

43214A-PORTAL/3884 1891	2.4FH1	Z233	Complies with IDA Standards DA102889
----------------------------	--------	------	--------------------------------------------

Contains FCC ID: QDS-BRCM1018  
IC: 4324A-BRCM1018  
SCT: RCPBRBC05-734  
CM # ID: 2005DJ0891  
CNC: 16-4062

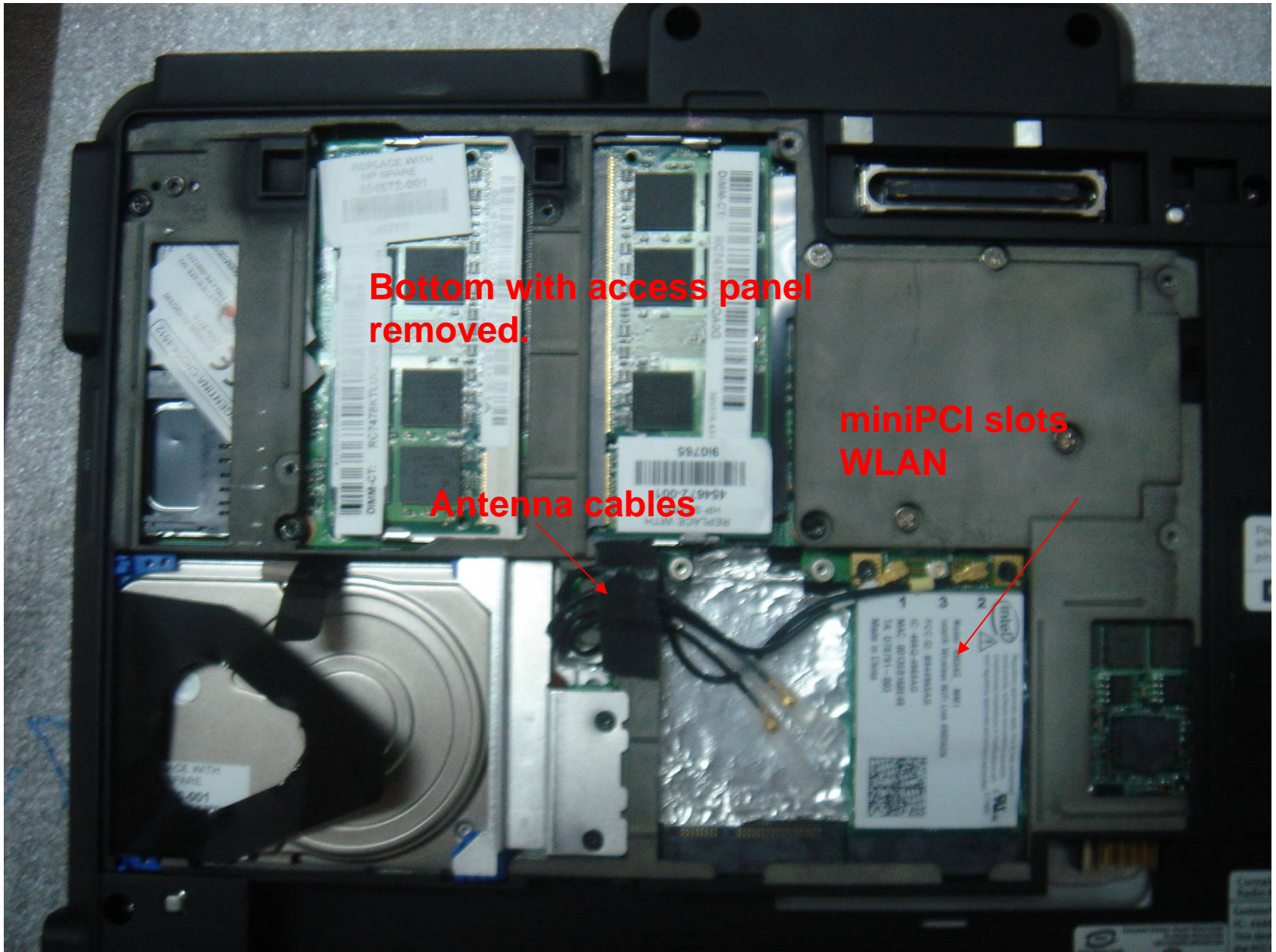
 N12075  
0860-05-1869

  
(01) 0789355200075-7

   
AP 101590 C

REPLACE WITH  
HP SPARE  
454685-001  
  
9i0765



Bottom with access panel removed.

miniPCI slots  
WLAN

Antenna cables





Regulatory approvals apply only to Intel authorized components, software and antenna solutions. Unauthorized installations or modifications will void regulatory approvals and product warranties. E178692

**intel**  
c **RU** us

**1** Model: 4965AG\_MM1  
**2** Intel® Wireless WiFi Link 4965AGN  
**3** FCC ID: B944965AG  
IC: 466Q-4965AG  
MAC: 0013E8168E49  
TA: D78791 - 003  
Made in China



REPLACE WITH  
HP SPARE  
454672-001

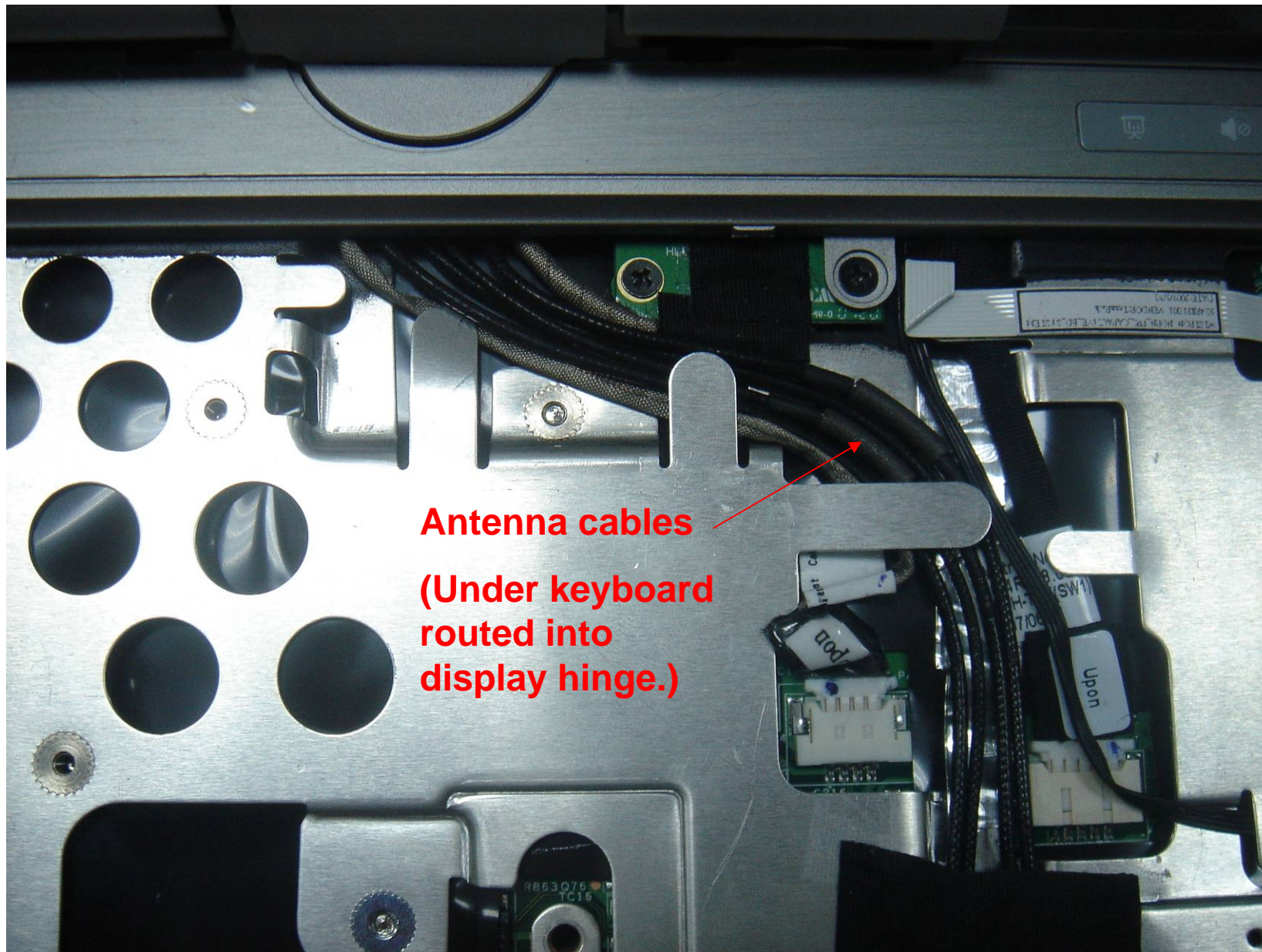






HP Confidential





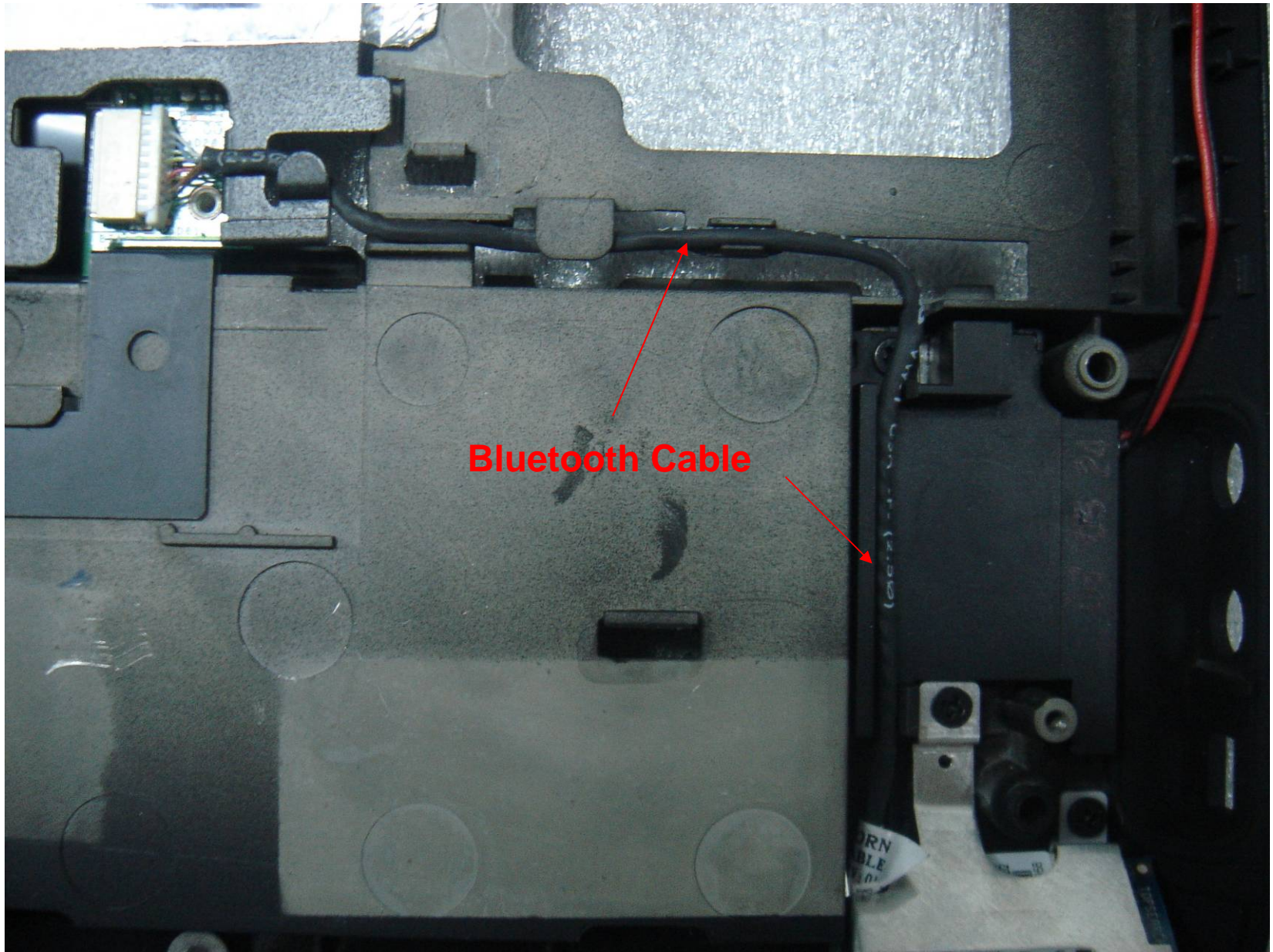
**Antenna cables**  
**(Under keyboard**  
**routed into**  
**display hinge.)**





HP Confidential





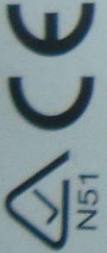
**Bluetooth Cable**







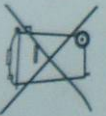
ARGENTINA:CNC54-4512



IC:3652B-RD02D330  
Chile:3770



CERTIFICATE NO.  
ESD-CPE-0601233



CCAB06M10010T1

TEC/MR/IMOD-08/02/113.NOV/05

CONEXANT  
Model:RD02-D330



中国制造



1406-05-1575



05-5016 201



(01)07886349860825

Brand Name : Conexant  
Model Name : RD02-D330  
Paraguay Cert n - 2006-06-I-0002

2006 04127 -0 90153 7-12856-0-102853 2700 330 31878  
2006 04127 -0 90153 53-12856-0-102856 2700 330 31878  
1110574 1110573 1110572 1110571 293 280  
08-5364818 : 31300  
08-5364818 : 31300  
RD02-D330 : 017  
CONEXANT SYSTEMS INC 31731  
31731 31731 31731 31731  
31731 31731 31731 31731

**FCC**  
Tested to Comply  
with FCC Standards  
**FOR HOME OR OFFICE USE**  
Trade Name : Conexant  
Model Name : RD02-D330  
US : CXSMM01BRD02D330

Modem Label



HP Confidential





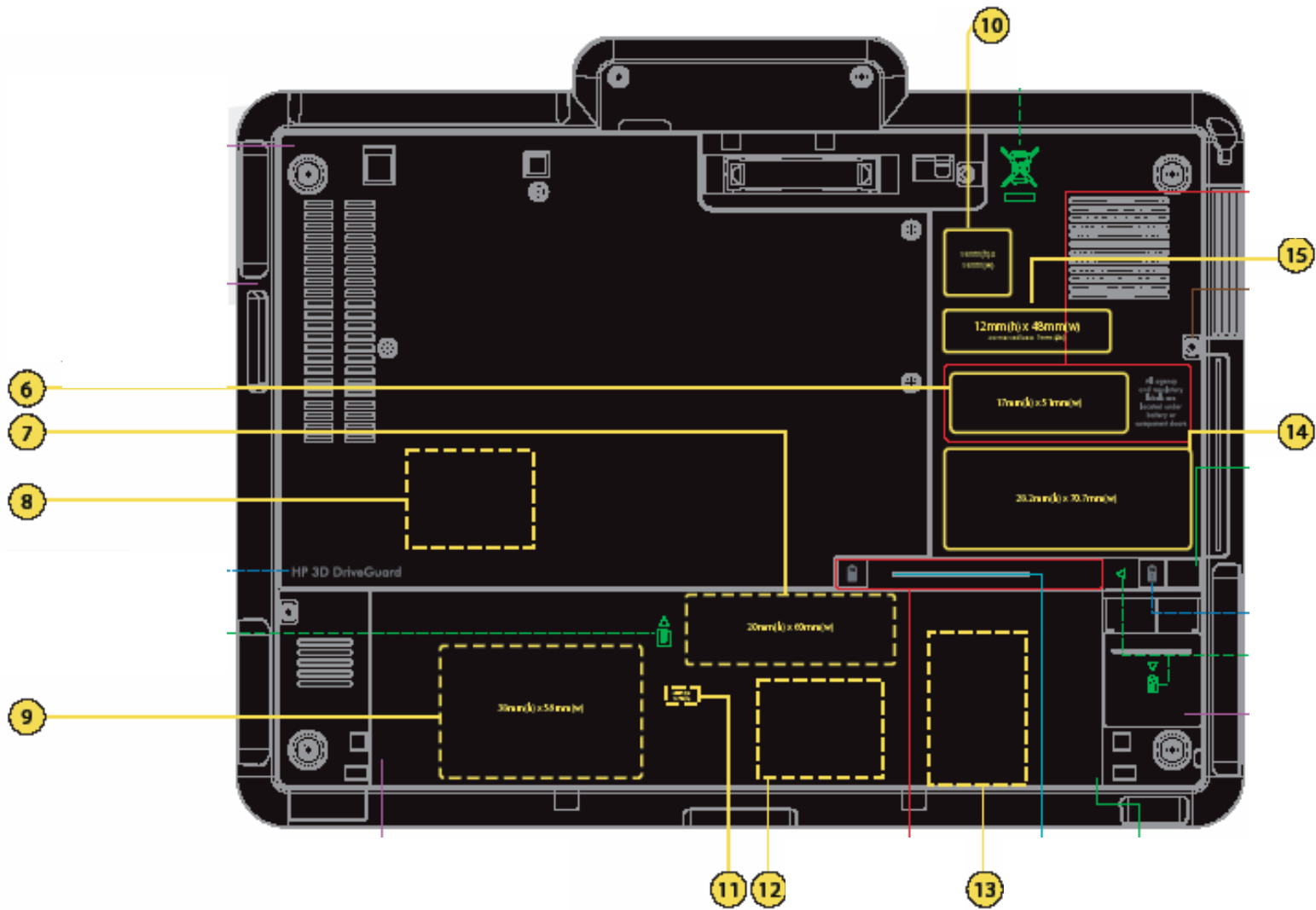
**WLAN left Antenna**





HP Confidential





HP Confide



# LABELS

- ① Service (Taiwan only)
- ② Keyboard
- ③ Processor
- ④ MS OS (MS OS only)
- ⑤ WWAN Instruction (all countries except Taiwan)
- ⑥ Service Tag
- ⑦ WWAN Regulatory (Reverse Printing)  
(after battery on board)
- ⑧ Bluetooth Regulatory (Reverse Printing)
- ⑨ System Regulatory (Reverse Printing)  
(after battery on board)
- ⑩ Country Recycle
- ⑪ Qualcomm Regulatory (Reverse Printing)
- ⑫ Wireless Regulatory (Reverse Printing)
- ⑬ Modem Regulatory (Reverse Printing)
- ⑭ MS COA (MS OS only)
- ⑮ Environmental HG
- ⑯ Battery (on bag)

+ Center label using crosshair.

▀ Apply label starting in this corner.

**(Reverse Printing)** Bkgd is Carbonite and Printing is 430C

HP Confidential