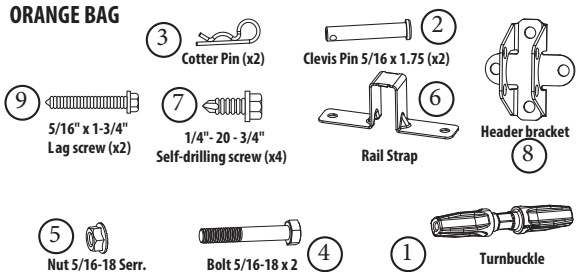


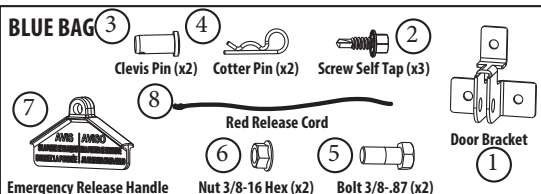
8 REPLACEMENT PARTS

ORANGE BAG



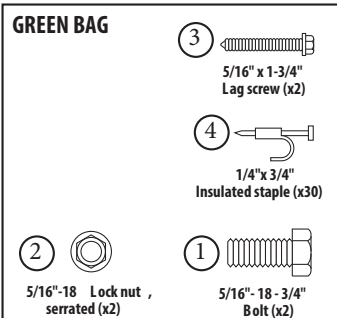
Item #	Part Number	Description.....	Qty.
A	39010R.S	PARTS PK,MOUNTING,ORANGE ...	1
1		TURNBUCKLE.....	1
2		PIN,CLEVIS,5/16 X 1-3/4	2
3		COTTER,HAIRPIN,.0725 DI	2
4		BOLT,HH,PLD,5/16-18 X 2	1
5		NUT,5/16-18 HX SERR FLG	1
6		STRAP,RAIL,RECT	1
7		SCR,SERR HWH,AB,1/4-14.....	4
8		BRKT,HEADER,RECT RAIL	1
9		SCR,LAG,HWH,TPG,5/16"X1	2

BLUE BAG



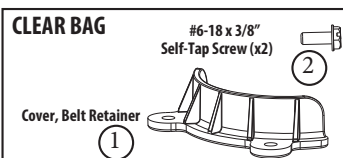
Item #	Part Number	Description.....	Qty.
B	39011R.S	PARTS PK,MOUNTING,BLUE.....	1
1		TURNBUCKLE.....	1
2		PIN,CLEVIS,5/16 X 1-3/4	2
3		COTTER,HAIRPIN,.0725 DI	2
4		BOLT,HH,PLD,5/16-18 X 2	1
5		NUT,5/16-18 HX SERR FLG	1
6		STRAP,RAIL,RECT	1
7		SCR,SERR HWH,AB,1/4-14.....	4
8		BRKT,HEADER,RECT RAIL	1
9		SCR,LAG,HWH,TPG,5/16"X1	2

GREEN BAG



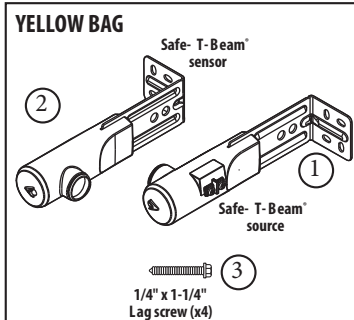
Item #	Part Number	Description	Qty.
C	37105S.S	PARTS PK, INSTALL, GREEN	1
1		BOLT,HH,PLD,5/16-18 X 3	2
2		NUT,5/16-18 HX SERR FLG	2
3		SCR,LAG,HWH,TPG,5/16"X1	2
4		PARTS PK,INSULATED STAP	30

CLEAR BAG



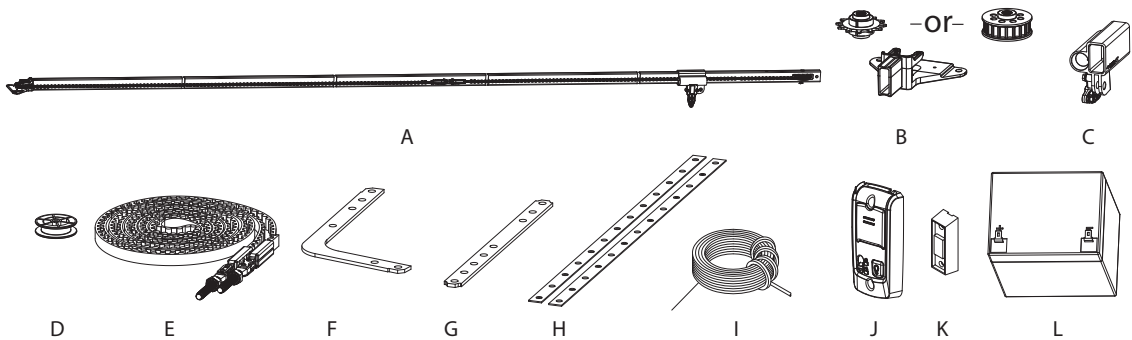
Item #	Part Number	Description	Qty.
D	39012R.S	PARTS PACK, CLEAR, BELT RETN....	1
1		COVER,BELT RETAINER	1
2		SCR,SF TP #6-18 X 3/8	2

YELLOW BAG



Item #	Part Number	Description	Qty.
E	37220R	Safe-T-Beam Set	1
1		XMTR ASSY,STB	1
2		RCVR ASSY,STB	1
3		SCR,#10-16 X 1.25.....	4

RAIL PARTS



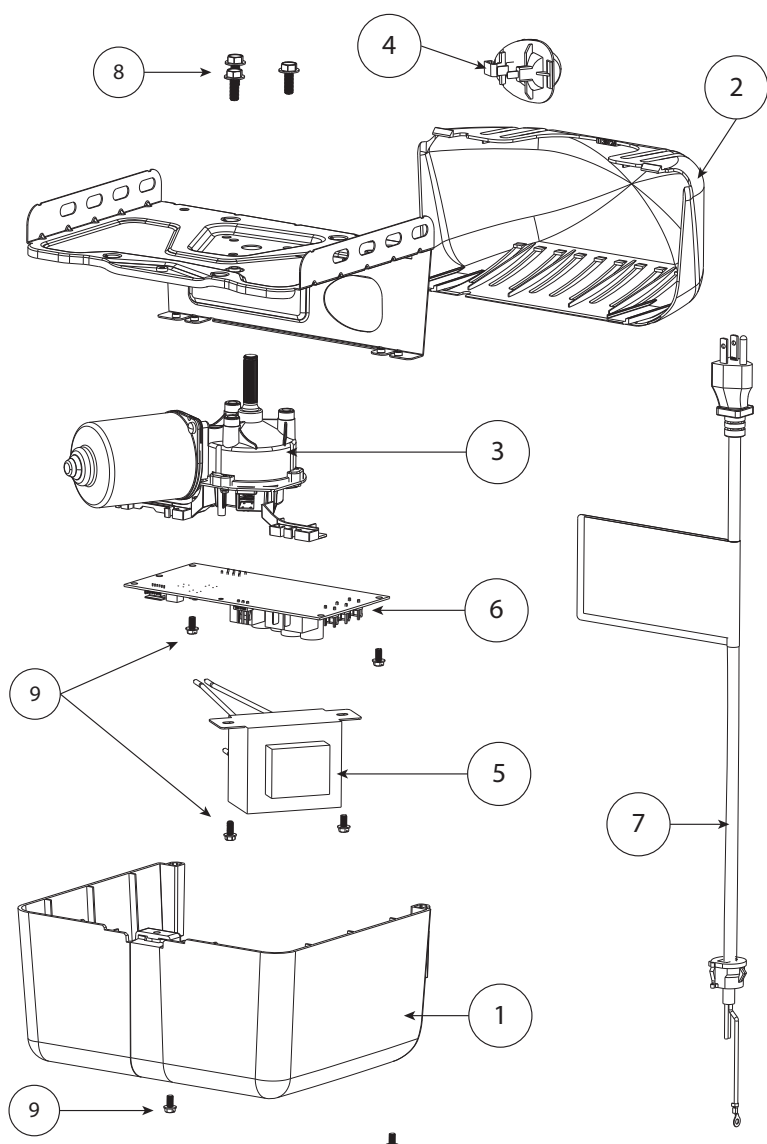
Item #	Part Number	Description	Qty.
A	39410R.S	5-pcs. Rail Assembly Complete (Chain)	1
	39411R.S	5-pcs. Rail Assembly Complete (Belt)	1
B	39277R.S	Sprocket Support Assembly (Chain)	1
	39278R.S	Sprocket Support Assembly (Belt)	1
C	38893R.S	Carriage Assembly	1
D	39276R.S	Idler Pulley	1
E	39352R.S	Chain Assembly (7Ft)	1
	39354R.S	Belt Assembly(7Ft)	1
F	37476A.S	Door Arm,Curved	1
G	37475A.S	Door Arm,Straight	1
H	21243B.S	Strap,Hanging,3/4 X 25	2
I	35265B.S	90 Ft. Wire Spool	1
J	39165R	Wall Console	1
K	29599S.S	Wall Button	1
L	111658.0002.S	Battery Backup Battery (Cover not included)	1
N/S	39027R	Rail Extension Kit (Chain)	
N/S	39026R	Rail Extension Kit (Belt)	

NOTE: The following kits will include all necessary harnesses, and/or hardware required for reassembly and detailed assembly instructions.

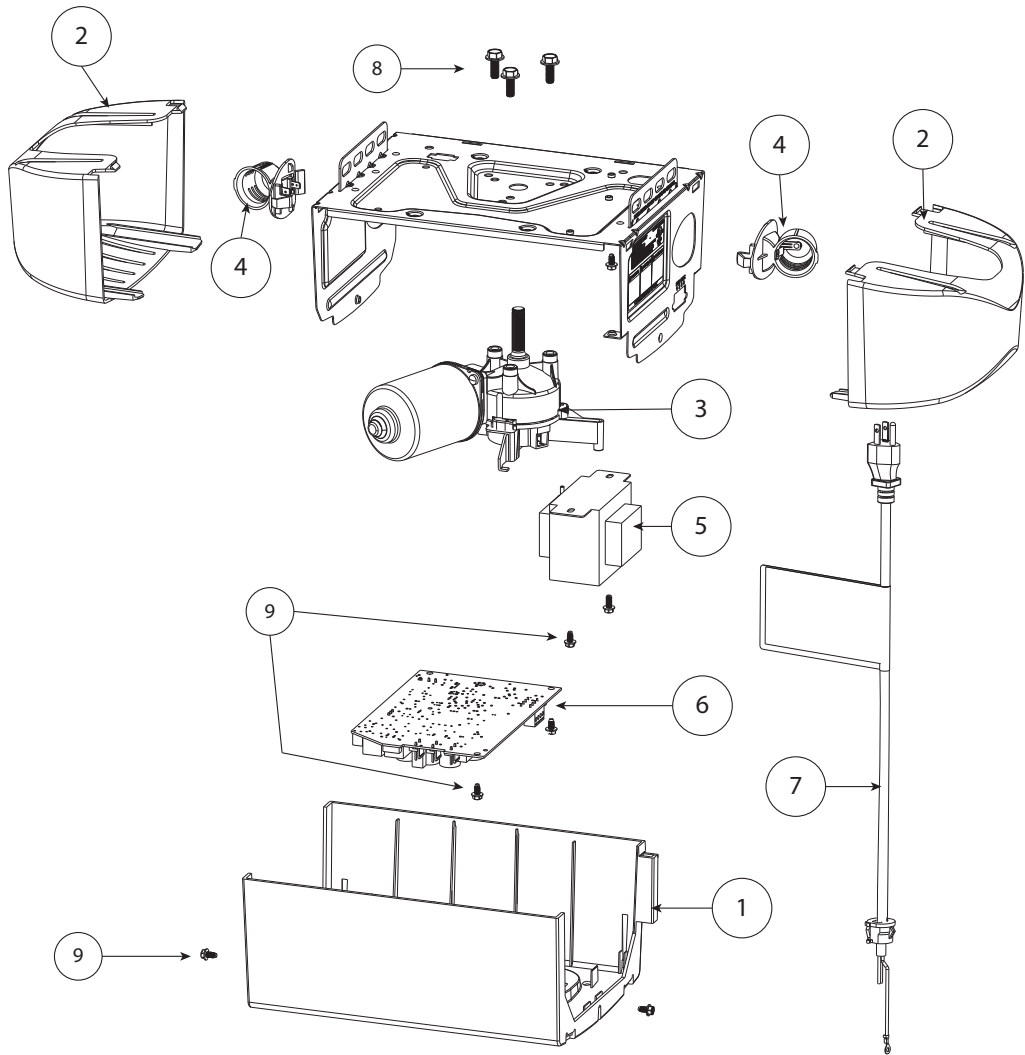
Motor Assemblies	PCB DC Controllers	Light Sockets
Idler Pulley Assembly	Transformer Assembly	Chain & Belt Kits
Covers		

SINGLE BULB POWERHEAD

Item #	Part Number	Description	QTY.
1	39355R.S	COVER,SINGLE BULB (1035)	1
	39417R.S	COVER, SINGLE BULB (2036)	1
2	38126A.S	LENS.....	1
3	38644R.S	MOTOR ASSEMBLY (1035, 2036).....	1
4	38645R.S	SOCKET,LIGHT,30 DEG ANG	1
5	39342R.S	TRANSFORMER,120VAC.....	1
6	38647S.S	PCBA,DC CONTROLLER (1035)	1
	39340R.S	PCB, DC CONTROLLER (2036)	1
7	38240A.S	POWER CORD,45"	1
8	38437A.S	SCR,M6-1 X 12 HWH THDF (3pk.)	1
9	8706G04.S	SCR,HHD,SLTD,TAP,#8X5/1 (3pk).....	2



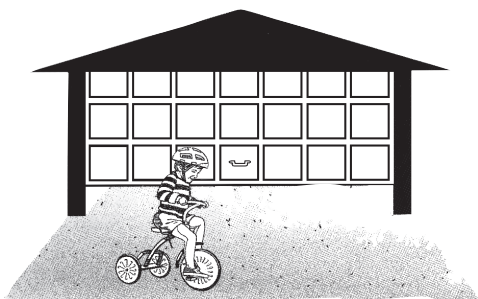
DUAL BULB POWERHEAD



Item #	Part Number	Description	QTY.
1	39356R.S	COVER, DUAL BULB (2035)	1
	39356S.S	COVER, DUAL BULB (2055)	1
	39356V.S	COVER, DUAL BULB (3055)	1
	39356T.S	COVER, DUAL BULB (7055)	1
	39356U.S	COVER, DUAL BULB (7035)	1
2	38911A.S	LENS,RTP,DUAL BULB.....	2
3	39338R.S	MOTOR ASSEMBLY (2035, 2055, 3055).....	1
	39338S.S	MOTOR ASSEMBLY BBU MODELS (7035, 7055).....	1
4	39344R.S	SOCKET,ANGLED LIGHT	2
5	39342R.S	TRANSFORMER,120VAC.....	1
6	39340R.S	PCBA,DC CONTROLLER (2035, 2055, 3055)	1
	39340S.S	PCB, DC CONTROLLER WITH BBU (7035, 7055)	1
7	39346R.S	POWER CORD,45"	1
8	38437A.S	SCR,M6-1 X 12 HWH THDF (3pk)	1
9	8706G04.S	SCR,HHD,SLTD,TAP,#8X5/1 (3pk).....	2

IMPORTANT INFORMATION

Automatic Garage Door Opener and Garage Door Safety and Maintenance Guide



Garage Door Openers Are Not Toys



Do not stand or walk under a moving door! Do not let children or adults play "beat the door."

It is dangerous and can result in serious injury or death. Adults should set a good example.

Know how to use the emergency release, in case someone is pinned by the door.

Garage Door System Safety- An Automatic Decision

A garage door is the largest moving object in the home. They are often operated by electric door openers. Proper installation, operation and maintenance and testing of the garage door and automatic opener are necessary to provide safe, trouble-free operation. An improperly adjusted garage door or automatic opener can exert deadly force when the door closes. This could lead to serious injury or death from being hit by a closing garage door or from being trapped under the door.



Safety if Everyone's Business

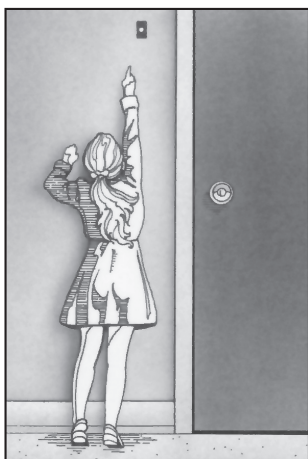
A few simple precautions can protect our family and friends from potential harm. Please take a few minutes to read the following safety and maintenance tips. Refer to your garage door and opener owner's manual for details specific to your garage door and automatic opener.



Do not let children play with or use the transmitters or remote controls. Always place or store them out of the reach of children.



Some of the following precautions and warnings are identified with this "Safety and Alert Symbol." This symbol indicates a potential personal safety hazard that can result in injury or death.



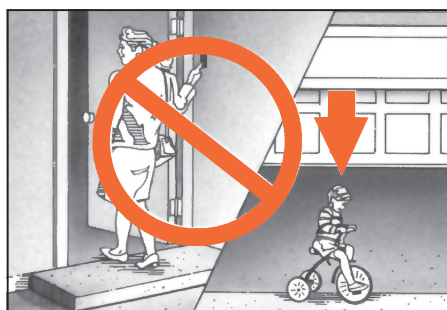
The pushbutton wall control should be out of the reach of children (at least 5 feet from the floor) and away from all moving parts. Mount and use the button where you can clearly see the moving garage door



Teach children to keep their hands and fingers clear of section joints, hinges, track, springs and other door parts. Contact with a moving door or its hardware could cause serious injury. These injuries can also happen with garage doors that don't have automatic openers.

Teach Your Children About Garage Door and Opener Safety

Garage door openers are not toys. Careless operation and allowing children to play with or use garage door opener controls can lead to tragic results. Discuss garage door safety with your children. Explain the danger of being trapped under the door.



When using the pushbutton or transmitter, keep the door in sight until it completely stops moving. Teach children never to play under or near an open garage door.

Routine Maintenance Can Prevent Tragedies

Take a few minutes to inspect and test your complete garage door system. Make monthly inspection and testing a part of your regular routine. Safety is everyone's business. Make garage door and garage door opener safety automatic in your home.

Monthly Maintenance Checklist.

Garage Door Opener

- Reversal Test
- Force Setting Test
- Additional safety devices

Garage Door

- Visual inspection-springs, rollers, pulleys, cables and track
- Lubrication
- Door balance test

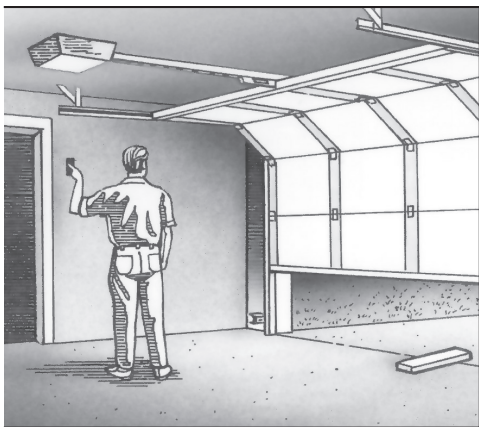
Consult owner's manual for additional recommended maintenance for your models of door and manual.

Testing and Maintaining The Garage Door Opener

There are routine Safety and Maintenance steps that you should follow once a month. Review your owner's manual for the door opener. If you don't have the owner's manual, look for the opener model number on the back of the power unit and request a manual from the manufacturer

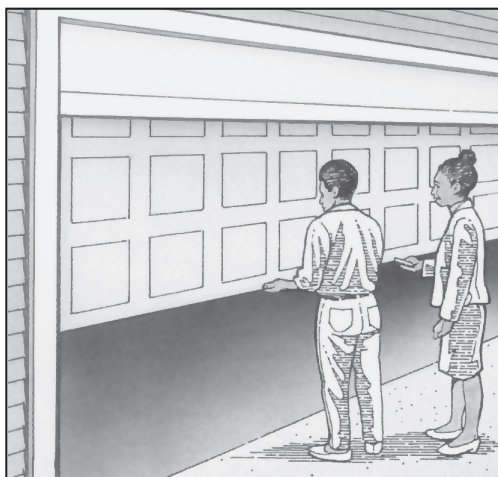
Reversal Test

Make sure your opener has a reversing feature. If a reversing feature is not present, it should be replaced. Garage door openers manufactured after January 1, 1993 are required by federal law to have advanced safety features which comply with the latest UL 325 Standards. Contact your manufacturer or installer for additional information.



Test the Reversing Feature every month.

- First test the balance of the door (see “Testing and Maintaining the Garage Door”). If the door is properly balanced, proceed.
- With the door fully open, place a 101/2” thick piece of wood (a 2” x 4” laid flat) on the floor in the center of the door opening.
- Push the transmitter or wall button to close the door. The door must reverse when it strikes the wood. (Note that the bottom part of “one-piece doors” must be rigid so that the door will not close without reversing.)
- If the door does not reverse, have it repaired or replaced. Have a qualified individual adjust, repair or replace the opener or door.



Force Setting Test

Test the force setting of your garage door opener by holding the bottom of the door as it closes. If the door does not reverse readily, the force may be excessive and need adjusting. See your owner’s manual for details on how to make the adjustment. Test the reversing feature after any adjustment.

Additional Safety Devices

Many garage door openers can be equipped with additional safety devices. Consider adding a photo eye or edge sensor as an extra measure of safety to protect against entrapment. Keep in mind that adding more safety devices will not make an old opener meet current UL Standards.

Make sure the additional safety devices, such as photo eyes or edge sensors, are properly installed and adjusted (see owner’s manual).

Testing and Maintaining The Garage Door

Perform routine maintenance steps once a month. Review your owner’s manual for the garage door. If you don’t have a manual, look for the model number on the back of the door, or check the lock handle, hinges or other hardware for the manufacturer’s name and request a manual from the manufacturer.

Visual Inspection

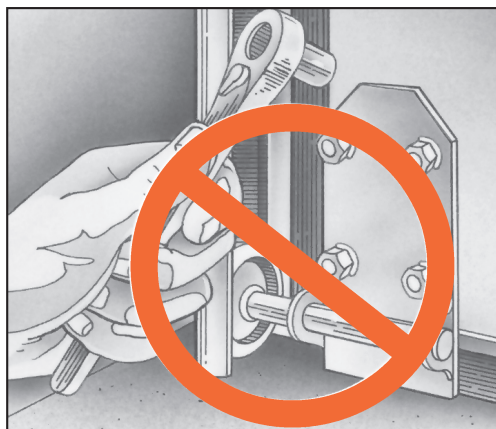
Look at the garage door springs, cables, rollers, pulleys and other door hardware for signs of wear.

If you suspect problems, have a qualified person make repairs.

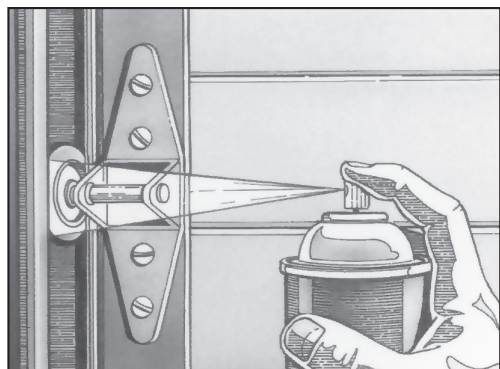


WARNING - Springs are under high tension. Only qualified persons should adjust them.

Garage door springs, cables, brackets and other hardware attached to the springs, are under very high tension and, if handled improperly, can cause serious injury. Only a qualified professional or a mechanically experienced person carefully following the manufacturer’s instructions should adjust them. The torsion springs (the springs above the door) should only be adjusted by a professional. Do not attempt to repair or adjust torsion springs yourself. A restraining cable or other device should be installed on the extension spring (the spring along the side of the door) to help contain the spring if it breaks.



Never remove, adjust or loosen the screws on the bottom brackets of the door. These brackets are connected to the spring by the lift cable and are under extreme tension.



Lubrication

Regularly lubricate the moving parts of the door. However, do not lubricate plastic parts such as plastic rollers and plastic idler bearing. Consult the door owner's manual for the manufacturer's recommendation.



Door Balance

Periodically test the balance of your door.

- Start with the door closed.
- If you have a garage door opener, use the release mechanism so you can operate the door by hand when doing this test.
- You should be able to lift the door smoothly and with little resistance. It should stay open around three or four feet above the floor. If it does not, it is out of adjustment. Have it adjusted by a qualified service person.

Garage Door Opener Safety- An Automatic Decision

This important information is provided by the U.S. Consumer Product Safety Commission, the National Safety Council and the Industry Coalition for Automatic Garage Door Opener Safety.



**National
Safety
Council**



Genie Models 1035, 2035, 2036, 2055, 3035, 3055, 7035, 7055 Limited Warranty

GMI Holdings, Inc. d/b/a The Genie Company ("Seller") warrants to the original purchaser of the Models 1035, 2035, 2036, 2055, 3035, 3055, 7035 or 7055 garage door opener ("Product"), subject to all of the terms and conditions hereof, that the Product and all components thereof will be free from defects in materials and workmanship for the following period(s) of time, measured from the date of purchase:

MOTOR/GEARBOX –
Models 3035, 3055, 7035 and 7055- LIMITED LIFETIME*
Models 2035 and 2055 - TEN (10) YEARS
Models 2036 - SEVEN (7) YEARS
Models 1035 - FIVE (5) YEARS

BELT - FIFTEEN (15) YEARS for Belt Drive Product
or
CHAIN - FIVE (5) YEARS for Chain Drive Product

ACCESSORIES - ONE (1) YEAR

CORE UNIT PARTS** -
Models 3035, 3055, 7035 AND 7055 - FIVE (5) YEARS.
Models 1035, 2035, 2036 AND 2055 - ONE (1) YEAR

OTHER PARTS - Parts and components not part of the Core Unit** - ONE (1) YEAR

*"Limited Lifetime" shall mean for as long as the original purchaser owns the home in which the Product is originally installed

**The "Core Unit" consists of the power head, wired wall control, Safe-T-Beam® system, J-Arm and rail.

Seller's obligation under this warranty is specifically limited to repairing or replacing, at its option, the Product or any part thereof which is determined by Seller to be defective during the applicable warranty period. Any labor charges are excluded and will be the responsibility of the purchaser.

This warranty gives you specific legal rights, and you may also have other rights which vary from state to state. This warranty is made to the original purchaser of the Product only, and is not transferable or assignable. This warranty applies only to Product installed in a residential or other non-commercial application. It does not cover any Product installed in commercial or industrial building applications. This warranty does not apply to any unauthorized or improper installation, alteration or repair of the Product, or to any Product or component which has been damaged or deteriorated due to misuse, neglect, accident, failure to provide necessary maintenance, failure to follow owner's manual instructions, normal wear and tear, or acts of God or any other cause beyond the reasonable control of Seller, and does not cover batteries, use of extension cord, missing or damaged parts from clearance or open box sales, or repairs or maintenance to door components.

ALL EXPRESS AND IMPLIED WARRANTIES FOR THE PRODUCT, INCLUDING BUT NOT LIMITED TO ANY IMPLIED WARRANTIES OF MERCHANTABILITY AND FITNESS FOR A PARTICULAR PURPOSE, ARE LIMITED IN TIME TO THE APPLICABLE WARRANTY PERIOD REFLECTED ABOVE. NO WARRANTIES, WHETHER EXPRESS OR IMPLIED, WILL APPLY AFTER THE LIMITED WARRANTY PERIOD HAS EXPIRED. Some states do not allow limitations on how long an implied warranty lasts, so the above limitation may not apply to you.

IN NO EVENT SHALL GMI HOLDINGS, INC. OR ITS PARENT OR AFFILIATES BE RESPONSIBLE FOR, OR LIABLE TO ANYONE FOR, SPECIAL, INDIRECT, COLLATERAL, PUNITIVE, INCIDENTAL OR CONSEQUENTIAL DAMAGES, even if Seller has been advised of the possibility of such damages. Such excluded damages include, but are not limited to, loss of use, cost of any substitute product, or other similar indirect financial loss. Some states do not allow the exclusion or limitation of incidental or consequential damages, so the above limitation or exclusion may not apply to you.

Claims under this warranty must be made promptly after discovery and within the applicable warranty period. To obtain warranty service, you must contact Genie® customer service toll free at 1-800-354-3643 to speak with a trained representative and attempt reasonable troubleshooting measures, as well as provide proof of the date and location of purchase, identification as the original purchaser and a description of the claimed defect. Purchaser must allow Seller a reasonable opportunity to inspect the Product claimed to be defective prior to removal or alteration of its condition. Upon determination by Seller that the Product or any part thereof is defective during the applicable warranty period (which may require purchaser to return the Product to Seller at purchaser's expense), Seller will supply the purchaser with replacement parts or, at its option, a replacement Product (shipping and handling of any replacement Product or parts also at purchaser's expense). Seller may use new or reconditioned parts, or a new or reconditioned Product of the same or similar design.

There are no established informal dispute resolution procedures of the type described in the Magnuson-Moss Warranty Act.

Register your warranty at our website. www.GenieCompany.com/support_warranty.aspx

PURCHASER: _____
INSTALLATION ADDRESS: _____
DATE PURCHASED: _____
OPENER MODEL: _____
REMOTE CONTROL MODEL: _____
DATE OF INSTALLATION: _____
NAME OF DISTRIBUTOR/INSTALLER: _____
ADDRESS OF DISTRIBUTOR/INSTALLER: _____
SERIAL NUMBER: _____

