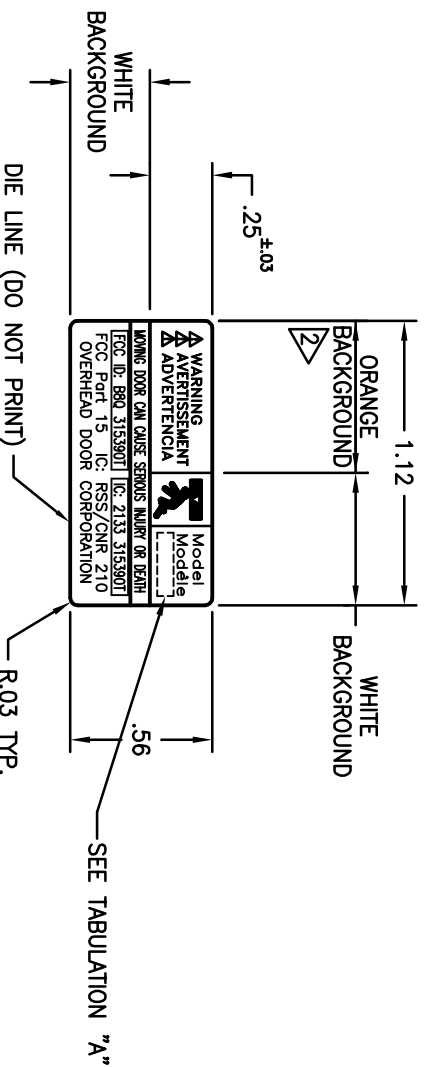


**NOTES**

1. BLACK GRAPHICS AND TYPE ON 2 MIL MYLAR WITH PRESSURE SENSITIVE PERMANENT ADHESIVE FOR USE ON ABS PLASTIC, 1 MIL CLEAR MYLAR OVERLAY.
2. COLOR PER ANSI Z535.1.
3. 6000 QTY. PER REEL WITH 3 FOOT LEADER AT BEGINNING OF REEL.






## O.T. ROLL WIND



REVISIONS				
EN	REV	DESCRIPTION	DATE	APPROVAL
35770	—	ORIGINAL ISSUE		

Plotted 09-06-05 08:55

THE DRAWINGS AND ALL OTHER INFORMATION CONTAINED HEREIN ARE THE CONFIDENTIAL AND PROPRIETARY PROPERTY OF OVERHEAD DOOR CORPORATION AND ITS AFFILIATED COMPANIES. THIS DRAWING AND INFORMATION, IN WHOLE OR IN PART, MAY NOT BE COPIED IN ANY MANNER OR DISCLOSED TO ANYONE WITHOUT THE PRIOR WRITTEN CONSENT OF OVERHEAD DOOR CORPORATION. NO DISCLOSURE OF ANY OF THIS DRAWING OR INFORMATION IS INTENDED TO OPERATE AS A LICENSE OR AUTHORIZATION TO USE IT FOR ANY PURPOSE WITHOUT THE SPECIFIC WRITTEN CONSENT OF OVERHEAD DOOR CORPORATION.

REF DWG	USED ON	 <b>HARD ANGLE PROJECTION</b>	
33068		 <b>TOLERANCES UNLESS OTHERWISE SPECIFIED</b>	
		<b>WHOLE NUMBERS:</b> ±.25	
		<b>X</b> ±.1	
		<b>.XX</b> ±.02	
		<b>.XXX</b> ±.010	
		<b>ANGLES:</b> ±1°	
		<b>HOLES:</b> ±.003	
		<b>NOTE: Y14.100 AND Y14.5 APPLICABLE UNLESS OTHERWISE SPECIFIED. DIMENSIONS ARE IN U.S. CUSTOMARY UNITS.</b>	
		<b>FINISH</b>	
		 <b>A Subsidiary of</b> <b>Overhead Door Corporation</b> 22790 Lake Park Blvd Alliance Ohio, 44601	
		<b>MATERIAL:</b>	
		<b>NAME</b>	<b>DATE</b>
		<b>DRAWN BY:</b>	<b>08/29/05</b>
		<b>KMG</b>	
		<b>CHECKED BY:</b>	<b>9/6/05</b>
		<b>DRU</b>	
		<b>APPROVED BY:</b>	<b>9/6/05</b>
		<b>LDM</b>	
		<b>DRAWING TITLE:</b> <b>LABEL, FCC/IC,</b> <b>XMTR, OHD</b>	
		<b>B - 35813</b>	
		<b>DRAWING NUMBER</b>	
		<b>SCALE:</b>	<b>2X</b>
		<b>SHEET</b>	<b>1 OF 1</b>

PART NO.	TAB. A
35813-A	OCDCD
35813-B	OCDD