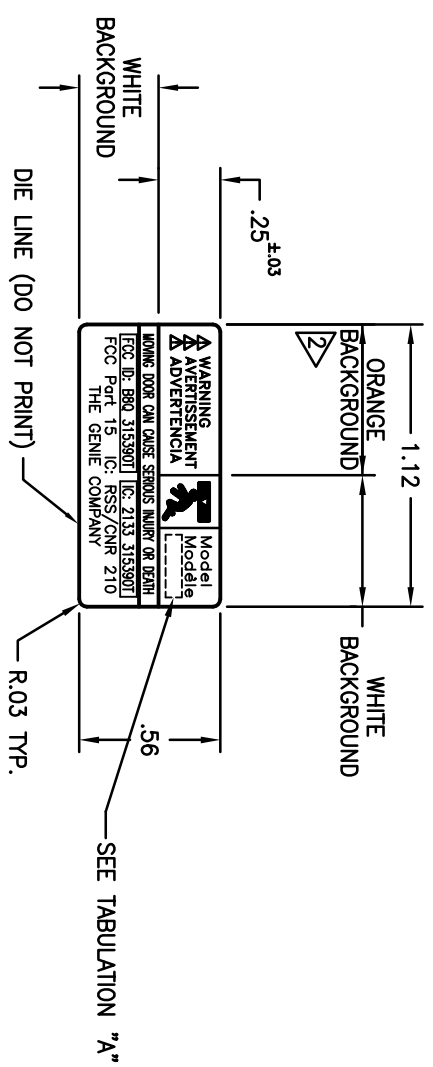


NOTES

1. BLACK GRAPHICS AND TYPE ON 2 MIL MYLAR WITH PRESSURE SENSITIVE PERMANENT ADHESIVE FOR USE ON ABS PLASTIC, 1 MIL CLEAR MYLAR OVERLAY.
2. COLOR PER ANSI Z535.1.
3. 6000 QTY. PER REEL WITH 3 FOOT LEADER AT BEGINNING OF REEL.



O.T. ROLL WIND



PART NO.	TAB. A
35812-A	GICTD
35812-B	GITD

REVISIONS			
EN	REV	DESCRIPTION	DATE
35770	-	ORIGINAL ISSUE	

Plotted 09-06-05 08:10

THE DRAWINGS AND ALL OTHER INFORMATION CONTAINED HEREIN ARE THE CONFIDENTIAL AND PROPRIETARY PROPERTY OF OVERHEAD DOOR CORPORATION AND ITS AFFILIATED COMPANIES. THIS DRAWING AND INFORMATION, IN WHOLE OR IN PART, MAY NOT BE COPIED IN ANY MANNER OR DISCLOSED TO ANYONE WITHOUT THE PRIOR WRITTEN CONSENT OF OVERHEAD DOOR CORPORATION. NO DISCLOSURE OF ANY OF THIS DRAWING OR INFORMATION IS INTENDED TO OPERATE AS A LICENSE OR AUTHORIZATION TO USE IT FOR ANY PURPOSE WITHOUT THE SPECIFIC WRITTEN CONSENT OF OVERHEAD DOOR CORPORATION.

TWO ANGLE PROJECTION		FINISH		NAME		DATE		DRAWING TITLE:	
WHOLE NUMBERS:		±.25		DRAWN BY:		08/25/05		LABEL, FCC/IC, XMTR, GENIE	
X		±.1		KMG					
XX		±.02							
XXX		±.010							
ANGLES:		±1°							
HOLES:		±.003							
UNIT OF MEASURE		INCHES		CHECKED BY:		9/6/05		DRAWING NUMBER	
MATERIAL:				APPROVED BY:		9/6/05		B-35812	
GENIE Overhead Door Corporation 22790 Lake Park Blvd Alliance Ohio, 44601				LDM				SCALE: 2X	
ASME Y14.100 AND Y14.5 APPLY, UNLESS OTHERWISE SPECIFIED DIMENSIONS ARE IN U.S. CUSTOMARY UNITS.								SHEET 1 OF 1	
REF DWG		USED ON							