

4

3

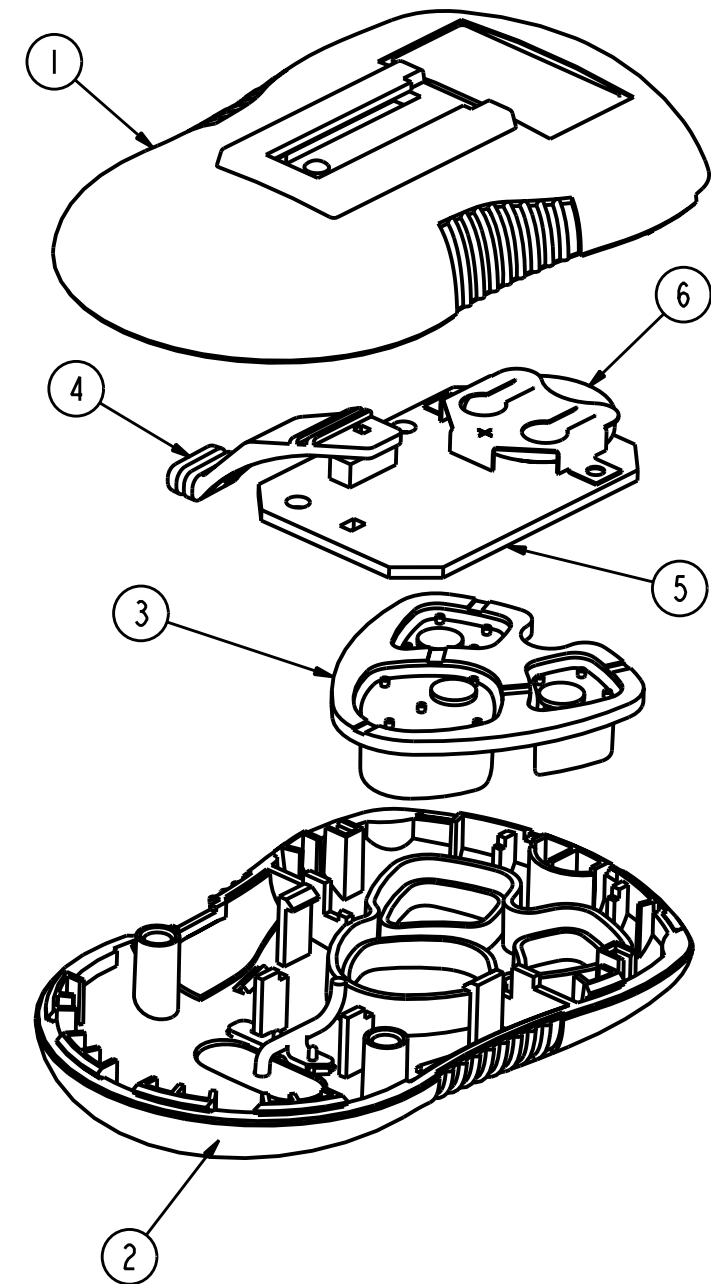
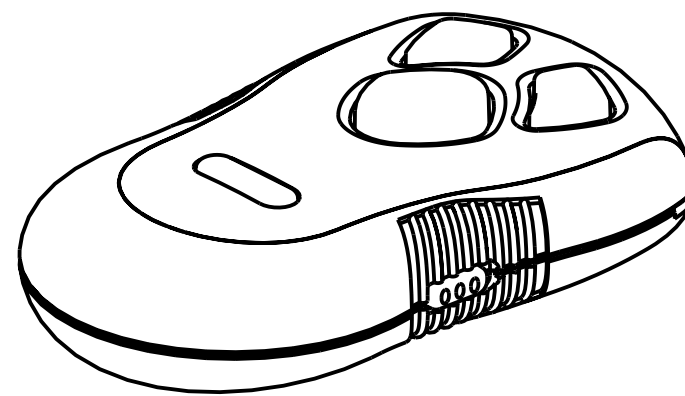
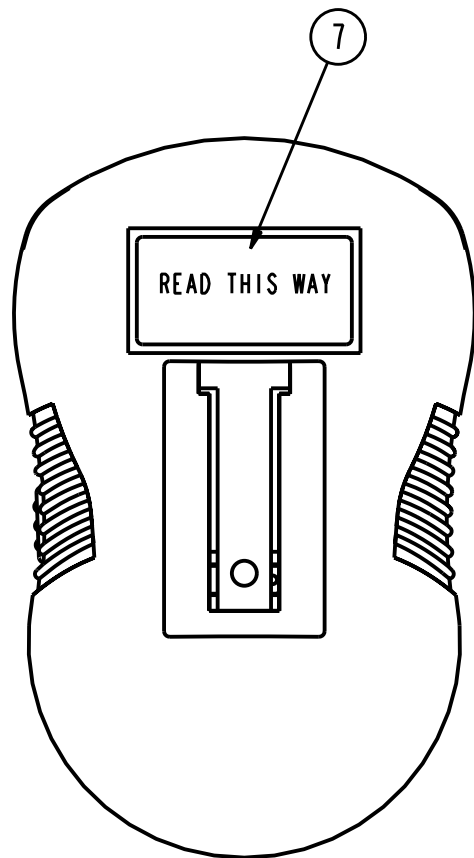
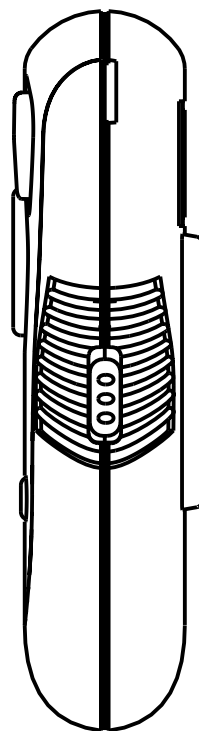
2

1

NOTES

REVISIONS


| EN    | REV | DESCRIPTION    | DATE | APPROVAL |
|-------|-----|----------------|------|----------|
| 35770 | -   | ORIGINAL ISSUE |      |          |
|       |     |                |      |          |
|       |     |                |      |          |



PRELIMINARY

PLOTTED: 09-07-05

|     |     |                  |             |                                 |
|-----|-----|------------------|-------------|---------------------------------|
| I   | I   | REF              | 25287       | TEST SPEC, XMTR, 315/390, FCTNL |
| I   |     | 7                | 35813-B     | LABEL, FCC/CAN, OCDTD, OHD      |
|     | I   | 7                | 35812-B     | LABEL, FCC/CAN, GITD, GENIE     |
| I   | I   | 6                | 34472-A     | BATTERY, 3V, COIN CELL          |
| I   | I   | 5                | 35722-R     | BD ASSY, XMTR, 315/390          |
| I   | I   | 4                | 35929-A     | SWITCH, EXT, LG XMTR            |
| I   | I   | 3                | 35773-A     | BUTTON, THREE, LG XMTR          |
| I   |     | 2                | 35770-S     | CASE, TOP, LG XMTR, 3BTN, OHD   |
|     | I   | 2                | 35770-R     | CASE, TOP, LG XMTR, 3BTN, GENIE |
| I   |     | I                | 35771-B     | CASE, BOTTOM, LG XMTR, BLACK    |
|     | I   | I                | 35771-A     | CASE, BOTTOM, LG XMTR, GRAY     |
| -S  | -R  | ITEM NO.         | PART NUMBER | PART DESCRIPTION                |
| QTY | QTY | BILL OF MATERIAL |             |                                 |

|  |         |   |  |                                       |  |        |   |              |                  |             |           |              |                              |                               |
|--|---------|---|--|---------------------------------------|--|--------|---|--------------|------------------|-------------|-----------|--------------|------------------------------|-------------------------------|
| THE DRAWINGS AND ALL OTHER INFORMATION CONTAINED HEREIN ARE THE CONFIDENTIAL AND PROPRIETARY PROPERTY OF OVERHEAD DOOR CORPORATION AND ITS AFFILIATED COMPANIES. THIS DRAWING AND INFORMATION, IN WHOLE OR IN PART, MAY NOT BE COPIED IN ANY MANNER OR DISCLOSED TO ANYONE WITHOUT THE PRIOR WRITTEN CONSENT OF OVERHEAD DOOR CORPORATION. NO DISCLOSURE OF ANY OF THIS DRAWING OR INFORMATION IS INTENDED TO OPERATE AS A LICENSE OR AUTHORIZATION TO USE IT FOR ANY PURPOSE WITHOUT THE SPECIFIC WRITTEN CONSENT OF OVERHEAD DOOR CORPORATION. |         |   |  |                                       |  |        |   |              |                  |             |           |              |                              |                               |
|  |         | THIRD ANGLE PROJECTION<br> |  | TOLERANCES UNLESS OTHERWISE SPECIFIED |  | FINISH | A Subsidiary of<br>Overhead Door Corporation<br>22790 Lake Park Blvd.<br>Alliance Ohio, 44601 |              | NAME             |             | DATE      |              | DRAWING TITLE:               |                               |
|  |         | ASME Y14.100 AND Y14.5<br>APPLY, UNLESS OTHERWISE<br>SPECIFIED DIMENSIONS ARE<br>IN U.S. CUSTOMARY UNITS.       |  | WHOLE NUMBERS: ±.25                   |  |        | UNIT OF<br>MEASURE<br>INCHES  | MATERIAL:    | DRAWN BY:<br>WDR |             | 06-Sep-05 |              | XMTR ASSY,<br>LG XMTR, 3 BTN |                               |
|  |         |   |  | .X ±.1                                |  |        |   |              |                  |             |           |              |                              |                               |
|  |         |   |  | .XX ±.01                              |  |        |   |              |                  |             |           |              |                              |                               |
|  |         |   |  | .XXX ±.005                            |  |        |   |              |                  | CHECKED BY: |           |              |                              | DRAWING<br>NUMBER<br>C- 35768 |
|  |         |   |  | ANGLES: ±1°                           |  |        |   | APPROVED BY: |                  |             |           | SCALE: 1.000 |                              | SHEET 1 OF 1                  |
| REF DWG  | USED ON |   |  | HOLES: ±.003                          |  |        |   |              |                  |             |           |              |                              |                               |
| DRAWING NUMBER C- 35768  |         |   |  |                                       |  |        |   |              |                  |             |           |              |                              |                               |
| SCALE: 1.000 SHEET 1 OF 1  |         |   |  |                                       |  |        |   |              |                  |             |           |              |                              |                               |

ORIGINAL PRO/ENGINEER MODEL

4

3

2

1