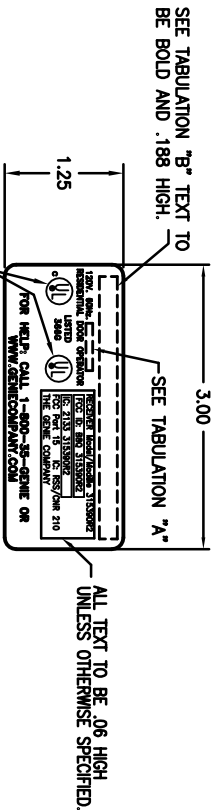


NOTES

1. 6.50" MAX. ROLL DIA.
2. LABEL TO BE DIE CUT.
3. ACCEPTABLE CORNER RADIUS TO BE WITHIN .00/.12 RANGE TYP. UNLESS SPECIFIED.
4. LABEL MATERIAL AND ADHESIVE MUST BE UL LISTED TO UL969 AND CSA CERTIFIED TO C22.2 NO. 0.15 APPROVED FOR USE ON POLYPHENYLENE OXIDE PLASTIC, FR-ABS (ACRILONITRILE BUTADIENE STYRENE) MAX. TEMP. 60°C. SUITABLE FOR EXPOSURE TO HIGH HUMIDITY OR OCCASIONAL EXPOSURE TO WATER.
5. EACH ROLL OF LABELS AND EACH CARTON OF LABELS MUST BE MARKED WITH THE MANUFACTURERS U.L. DESIGNATION FOR THIS LABEL.
6. LABEL MUST HAVE 1 MIL. MATTE INK/LAR OVERLAY.
7. LABEL MUST HAVE SILICONE RELEASE AGENT.



THE MINIMUM HEIGHT OF THE REGISTERED TRADEMARK SYMBOL ® SHALL BE 3/64 OF AN INCH, WHEN THE OVERALL DIAMETER OF THE UL MARK IS LESS THAN 3/8 OF AN INCH, THE TRADEMARK SYMBOL MAY BE OMITTED IF IT IS NOT LEGIBLE TO THE NAKED EYE.

Plotted 08-12-05 09:05

THE DRAWINGS AND ALL OTHER INFORMATION CONTAINED HEREIN ARE THE CONFIDENTIAL AND PROPRIETARY PROPERTY OF OVERHEAD DOOR CORPORATION AND ITS AFFILIATED COMPANIES. THIS DRAWING AND INFORMATION, IN WHOLE OR IN PART, MAY NOT BE COPIED IN ANY MANNER OR DISCLOSED TO ANYONE WITHOUT THE PRIOR WRITTEN CONSENT OF OVERHEAD DOOR CORPORATION. NO DISCLOSURE OF ANY OF THIS DRAWING OR INFORMATION IS INTENDED TO OPERATE AS A LICENSE OR AUTHORIZATION TO USE IT FOR ANY PURPOSE WITHOUT THE SPECIFIC WRITTEN CONSENT OF OVERHEAD DOOR CORPORATION.

TOLERANCES UNLESS OTHERWISE SPECIFIED

WHOLE NUMBERS:

±.02

XX

XXX

ANGLES:

HOLES:

FINISH

Overhead Door Corporation
A Subsidiary of
22700 Lee Park Blvd.
Atlanta, Ohio, 44011

MATERIAL:
2 MIL. INK/LAR WITH PRESSURE SENSITIVE
BACKING, PERMANENT ANKERS, BLACK
CHARACTERS ON SILVER PMS 877 BACKGROUND.

CHECKED BY:
DRU

APPROVED BY:
BO

NAME

DATE

DATE

DATE

DATE

DRAWING TITLE:

LABEL, MODEL,
CSD

DRAWING NUMBER

C-35597

SCALE: FULL

35597-B	GENIE 2060L	6 AMP.	1/2 H.P. MODEL 2060L
35597-A	GENIE 3060L	6 AMP.	1/2 H.P. MODEL 3060L
PART NO.	MODEL	TAB. "A"	TAB. "B"

REVISIONS			
EN	REV	DESCRIPTION	DATE
35770	-	ORIGINAL ISSUE	