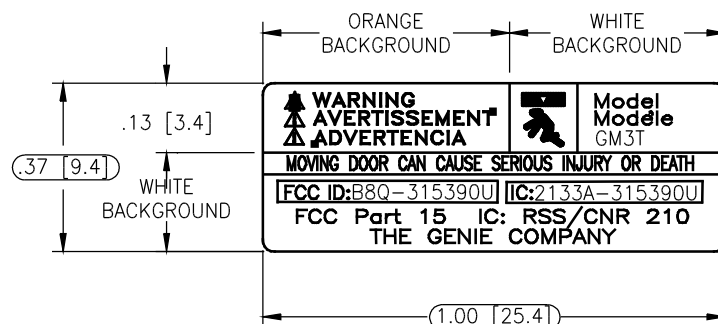


NOTES

1. BLACK GRAPHICS
2. 3M LABEL MATERIAL 7816, 2MIL GLOSS WHITE
POLYESTER FACESTOCK WITH 0.8MIL ACRYLIC ADHESIVE.
3. ORANGE BACKGROUND MATCH WITH PANTONE 151.



REVISIONS

ER	REV	DESCRIPTION	DATE	APPROVAL
500131	-	ORIGINAL ISSUE	3/19/12	DPB

P/N 38157-A

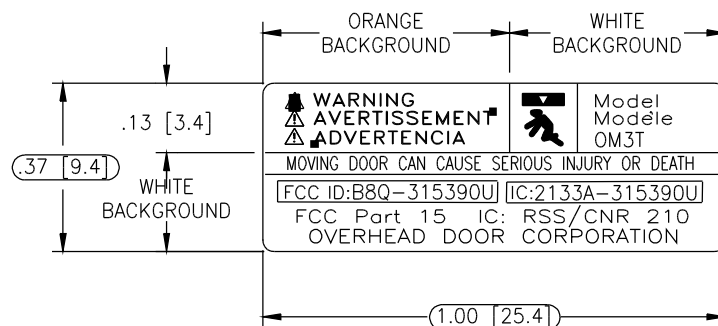
Plotted 03-19-12 09:49

THE DRAWINGS AND ALL OTHER INFORMATION CONTAINED HEREIN ARE THE CONFIDENTIAL AND PROPRIETARY PROPERTY OF OVERHEAD DOOR CORPORATION AND ITS AFFILIATED COMPANIES. THIS DRAWING AND INFORMATION, IN WHOLE OR IN PART, MAY NOT BE COPIED IN ANY MANNER OR DISCLOSED TO ANYONE WITHOUT THE PRIOR WRITTEN CONSENT OF OVERHEAD DOOR CORPORATION. NO DISCLOSURE OF ANY OF THIS DRAWING OR INFORMATION IS INTENDED TO OPERATE AS A LICENSE OR AUTHORIZATION TO USE IT FOR ANY PURPOSE WITHOUT THE SPECIFIC WRITTEN CONSENT OF OVERHEAD DOOR CORPORATION.

PART OF THIS DRAWING OR INFORMATION CONTAINED HEREIN IS TO BE RELEASED OR FURNISHED TO ANY OTHER PARTY WITHOUT THE WRITTEN CONSENT OF OVERHEAD DOOR CORPORATION.	
THIRD ANGLE PROJECTION	
TOLERANCES UNLESS OTHERWISE SPECIFIED	
WHOLE NUMBERS: ±.25	
.X ±.1	
.XX ±.01	
.XXX ±.005	
ANGLES: ±1°	
HOLE S: ±.003	
ASME Y14.100 AND Y14.5 APPLY, UNLESS OTHERWISE SPECIFIED DIMENSIONS ARE IN U.S. CUSTOMARY UNITS.	
REF DWG	USED ON
FINISH	
A Subsidiary of Overhead Door Corporation 22790 Lake Park Blvd. Alliance Ohio, 44601	
MATERIAL:	
SEE NOTES	
UNIT OF MEASURE INCHES	
NAME	
DATE	
DRAWN BY:	
KMG	
2/29/12	
CHECKED BY:	
DRU	
3/19/12	
APPROVED BY:	
DPB	
3/19/12	
DRAWING TITLE:	
LABEL, FCC/IC, GENIE GM3T	
DRAWING NUMBER	
B- 38157	
SCALE: 4X	
SHEET 1 OF 2	

NOTES

1. BLACK GRAPHICS
2. 3M LABEL MATERIAL 7816, 2MIL GLOSS WHITE
POLYESTER FACESTOCK WITH 0.8MIL ACRYLIC ADHESIVE.
3. ORANGE BACKGROUND MATCH WITH PANTONE 151.





REVISIONS

ER	REV	DESCRIPTION	DATE	APPROVAL
500131	-	ORIGINAL ISSUE	3/19/12	DPB

P/N 38157-B

Plotted 03-19-12 09:53

THE DRAWINGS AND ALL OTHER INFORMATION CONTAINED HEREIN ARE THE CONFIDENTIAL AND PROPRIETARY PROPERTY OF OVERHEAD DOOR CORPORATION AND ITS AFFILIATED COMPANIES. THIS DRAWING AND INFORMATION, IN WHOLE OR IN PART, MAY NOT BE COPIED IN ANY MANNER OR DISCLOSED TO ANYONE WITHOUT THE PRIOR WRITTEN CONSENT OF OVERHEAD DOOR CORPORATION. NO DISCLOSURE OF ANY OF THIS DRAWING OR INFORMATION IS INTENDED TO OPERATE AS A LICENSE OR AUTHORIZATION TO USE IT FOR ANY PURPOSE WITHOUT THE SPECIFIC WRITTEN CONSENT OF OVERHEAD DOOR CORPORATION.

		<div>THIRD ANGLE PROJECTION</div> <div></div> <div>ASME Y14.100 AND Y14.5 APPLY, UNLESS OTHERWISE SPECIFIED DIMENSIONS ARE IN U.S. CUSTOMARY UNITS.</div>	<div>TOLERANCES UNLESS OTHERWISE SPECIFIED</div> <div>WHOLE NUMBERS: ±.25</div> <div>.X ±.1</div> <div>.XX ±.01</div> <div>.XXX ±.005</div> <div>ANGLES: ±1°</div> <div>HOLES: ±.003</div>	<div>FINISH</div> <div></div> <div>A Subsidiary of Overhead Door Corporation 22790 Lake Park Blvd. Alliance Ohio, 44601</div> <div>MATERIAL:</div> <div>SEE NOTES</div>	<div>NAME</div>	<div>DATE</div>	<div>DRAWING TITLE:</div> <div>LABEL, FCC/IC, OHD OM3T</div>				
	<div>DRAWN BY:</div> <div>KMG</div>				<div>2/29/12</div>						
							<div>CHECKED BY:</div> <div>DRU</div>	<div>3/19/12</div>	<div>DRAWING NUMBER</div> <div>B- 38157</div>	<div>SCALE: 4X</div> <div>SHEET 2 OF 2</div>	
REF DWG	USED ON						<div>APPROVED BY:</div> <div>DPB</div>	<div>3/19/12</div>			

