

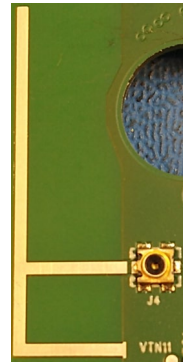
**BOSCH**

## Antenna Data Sheet for TR-1000 Belt pack

### DECT Antenna (Internal)

#### General Description

This is a Digital Enhanced Cordless Telecommunications (DECT), 0 dBi gain, omni-directional pattern, printed circuit board, inverted-F type antenna. There are two per TR-1000.



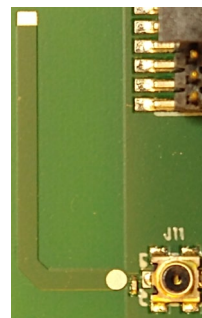
#### Specifications

Frequency	1880 – 1930 MHz
Antenna Gain	0 dBi
Horizontal Pattern	Omni-directional
VSWR	< 2:1
Polarization	Vertical, Linear
Impedance	50 Ohm

### BLE Antenna (Internal)

#### General Description

This is a Bluetooth Low Energy (BLE), 0 dBi gain, omni-directional pattern, 1/4-wave, printed circuit board antenna. There is one per TR-1000.



#### Specifications

Frequency	2400 – 2483.5 MHz
Antenna Gain	0 dBi
Horizontal Pattern	Omni-directional
VSWR	< 2:1
Polarization	Vertical, Linear
Impedance	50 Ohm

Bosch Security Systems, LLC reserves the right to make specification changes without notice.