

LLA000445000

This drawing, written description or specification represents a proprietary product of TELEX, Lincoln, NE., and shall not be released, disclosed, nor duplicated without the written permission of TELEX

LLA000445000 This drawing, written description or specification represents a proprietary product of TELEX, Lincoln, NE., and shall not be released, disclosed, nor duplicated without the written permission of	REVISIONS				
	CHG NO	LTR	DESCRIPTION	DATE	APPD
	70-001650	A	INITIAL RELEASE	2-29-10	NR
	70-001789	B	FCC AND IC NUMBERS CHANGED	7-29-10	NR

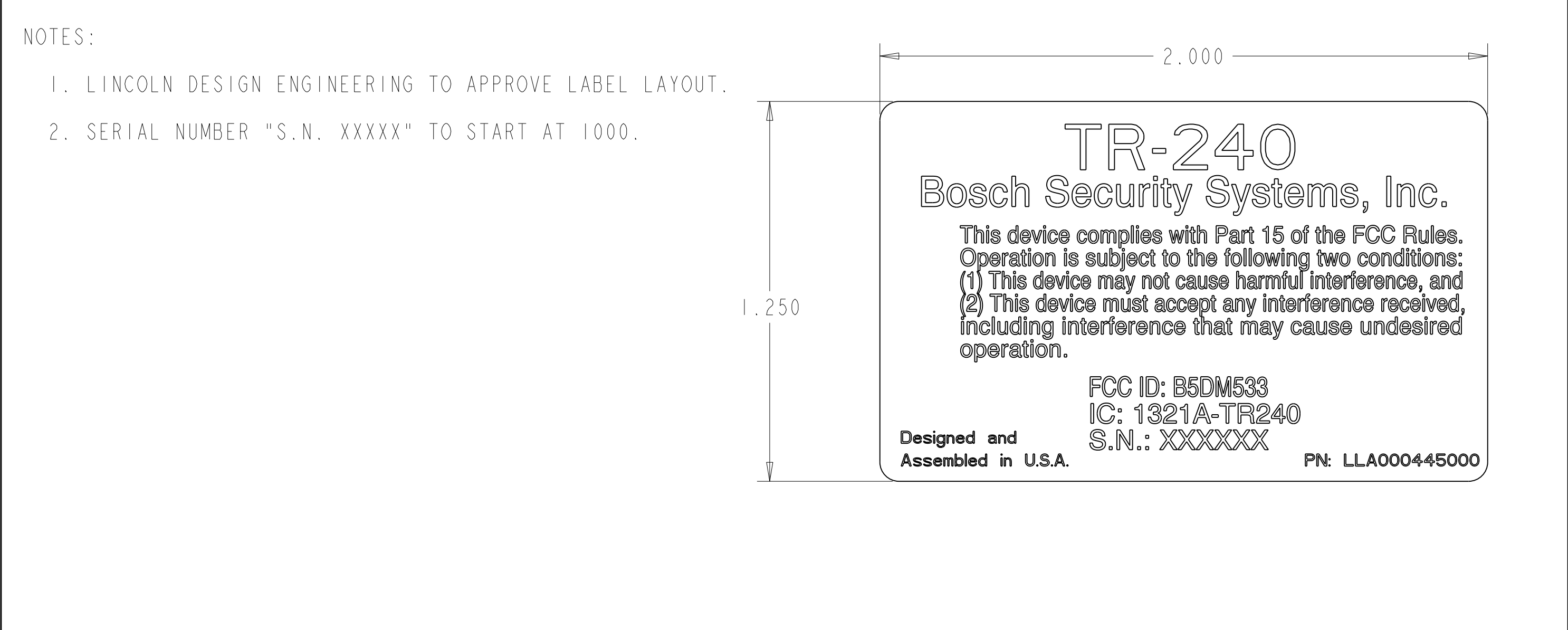
NOTES:

1. LINCOLN DESIGN ENGINEERING TO APPROVE LABEL LAYOUT.
2. SERIAL NUMBER "S.N. XXXXX" TO START AT 1000.



A vertical dimension line with arrows at both ends, indicating a height of 1.250 units. The dimension is labeled "1.250" in the center.

- NOTES:
1. LINCOLN DESIGN ENGINEERING TO APPROVE LABEL LAYOUT.
 2. SERIAL NUMBER "S.N. XXXXX" TO START AT 1000.
- 
- A vertical dimension line with arrows at both ends, indicating a height of 1.250 units. The dimension is labeled "1.250" in the center.



		QTY	DESCRIPTION	ITEM	PART NO.	SPECIFICATION		
			UNSPECIFIED LIMITS OF TOLERANCE	DATE	2-26-10	<div>Telex®</div> <div>TELEX COMMUNICATIONS INC.</div> <div>Lincoln Nebraska U.S.A.</div>		
			DECIMAL: FRACTION:	DR BY	N. ROGERS			
			.X = ±.030 IN MACHINED .XX = ±.010 IN FINISH: 64 ✓ .XXX = ±.005 IN.	CHK BY	TCN			
			ANGLES ±1°, BENDS ±2°	APPD.	JRC	LABEL, SERIAL/FCC, TR-240		
			STRAIGHTNESS AND/OR FLATNESS .005 IN./1 IN.	PROD.	----			
			CONCENTRICITY .010 TIR	<div>L-466</div> <div>2" x 1-1/2" WHITE</div> <div>LABEL STOCK</div>				
			UNMARKED ANGLES, BENDS AND INTERSECTIONS 90°			SIZE	CODE IDENT	DWG. NO.
NEXT ASSY.	USED ON		THREADS- EXT. CLASS 2A INT. CLASS 2B			B	57010	LLA000445000
APPLICATIONS				SCALE: NONE		SHEET: 1 OF 1		