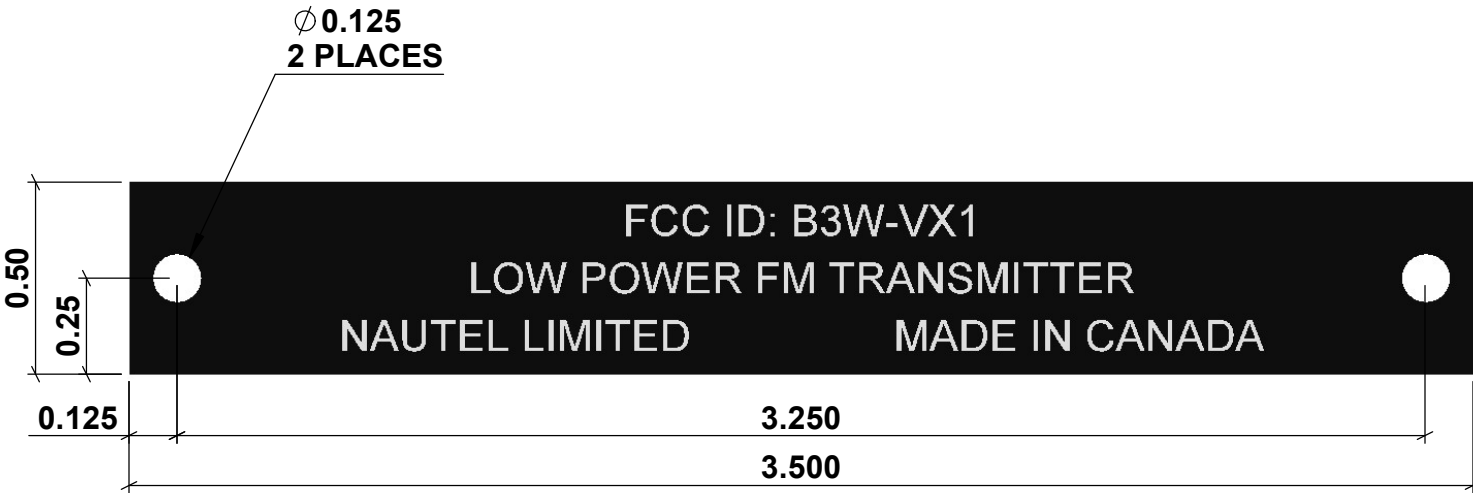




REV.	DCN#	REVISION DESCRIPTION	DWN BY	APPD BY	APPD DATE
A	SCR-7112	INITIAL ISSUE	JPD	M.WOODS	12FEB2025



NOTE:
PHOTOSENSITIVE ANODIZED ALUMINUM PROCESSED FOR
WHITE METAL CHARACTERS ON BLACK BACKGROUND

<div>MATERIAL</div> <div>.032 THK ALUM ALLOY 5052-H34</div>		<div>SURFACE FINISH: SEE NOTE</div>	
<div>ALL ELECTRONIC ASSEMBLIES ARE TO MEET LATEST REVISION OF IPC-A-610 OR IPC-A-620(CLASS 2) UNLESS OTHERWISE SPECIFIED. WHEN OTHERWISE SPECIFIED REFER TO THE NAUTEL STANDARD AS APPLICABLE.</div>		<div><div>Making Digital Broadcasting Work.</div></div>	
<div>UNLESS SPECIFIED TOLERANCE ON TORQUE VALUES SHALL BE +/-10%</div>			
<div>ALL MATERIALS SHALL MEET THE ASTM SPEC REFERENCED IN THE 'MATERIAL' SECTION OF THE TITLE BLOCK.</div>		<div>TITLE</div> <div>LABEL, ANODIZED ALUM, XMTR, LPFM, VX1</div>	
<div>UNLESS OTHERWISE STATED: DIMENSIONS ARE IN INCHES/WEIGHT IN POUNDS INSIDE BEND RAD = MATL THK FOR TOLERANCE INTERPRETATION SEE Q0001.WS or (FINISHES & FABRICATION) 3 PLACE DECIMAL ±.010 < 24 3 PLACE DECIMAL ±.020 > 24 2 PLACE DECIMAL ±.020 1 PLACE DECIMAL ±.030 FRACTIONAL ±1/32</div>	<div>PROPRIETARY & CONFIDENTIAL</div> <div>THE INFORMATION CONTAINED IN THIS DRAWING IS THE SOLE PROPERTY OF NAUTEL. ANY REPRODUCTION IN PART OR AS A WHOLE WITHOUT WRITTEN PERMISSION FROM NAUTEL IS PROHIBITED.</div>	<div>SIZE</div> <div>A</div>	<div>CODE IDENT NO</div> <div>37338</div>
	<div>3RD ANGLE PROJECTION</div> <div></div>	<div>DRAWING NO</div> <div>235-5087</div>	
	<div>DO NOT SCALE DRAWING</div>		<div>SHEET 1 OF 1</div>