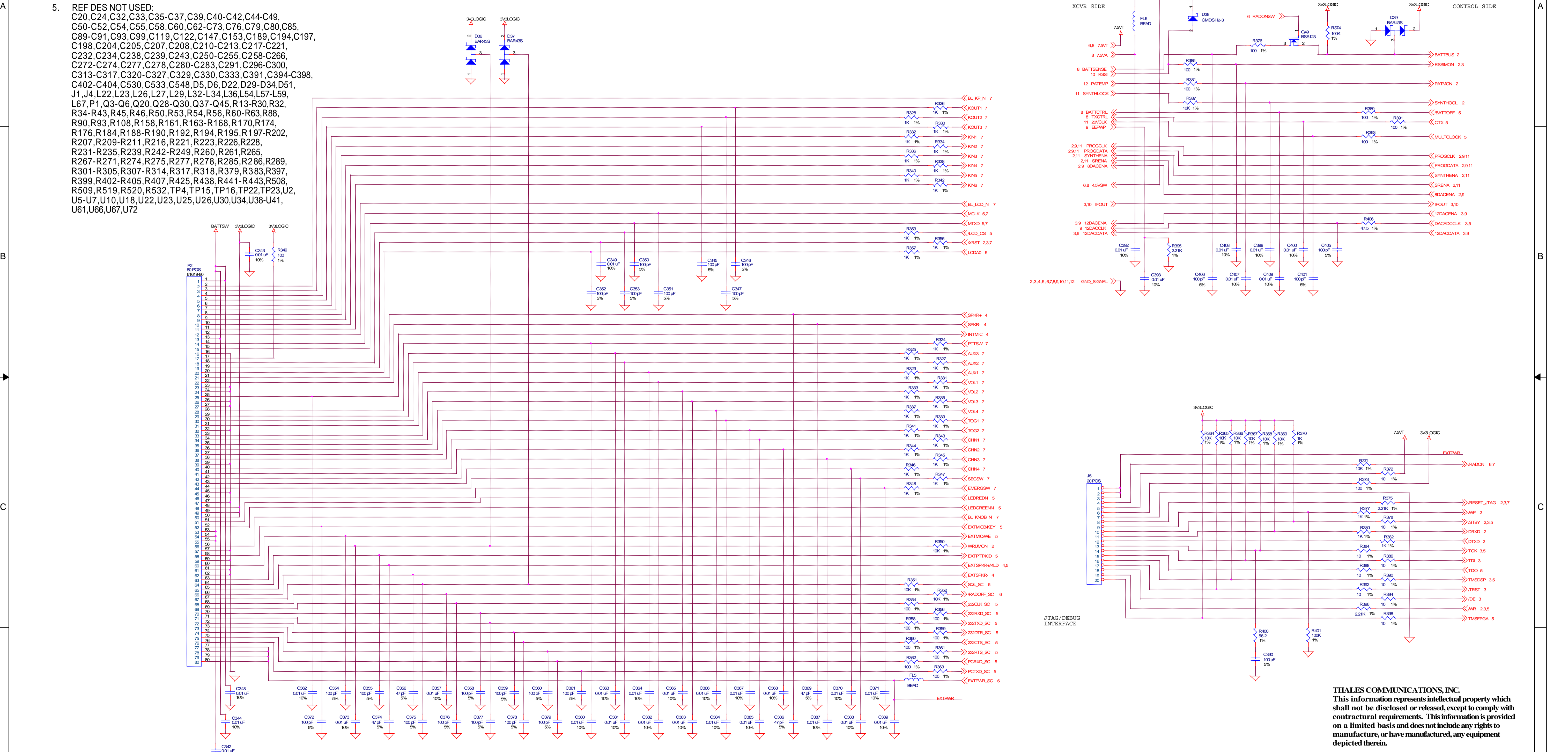


REVISIONS				
ZONE	REV	DESCRIPTION	DATE	APPROVED
	01	PREPRODUCTION RELEASE		

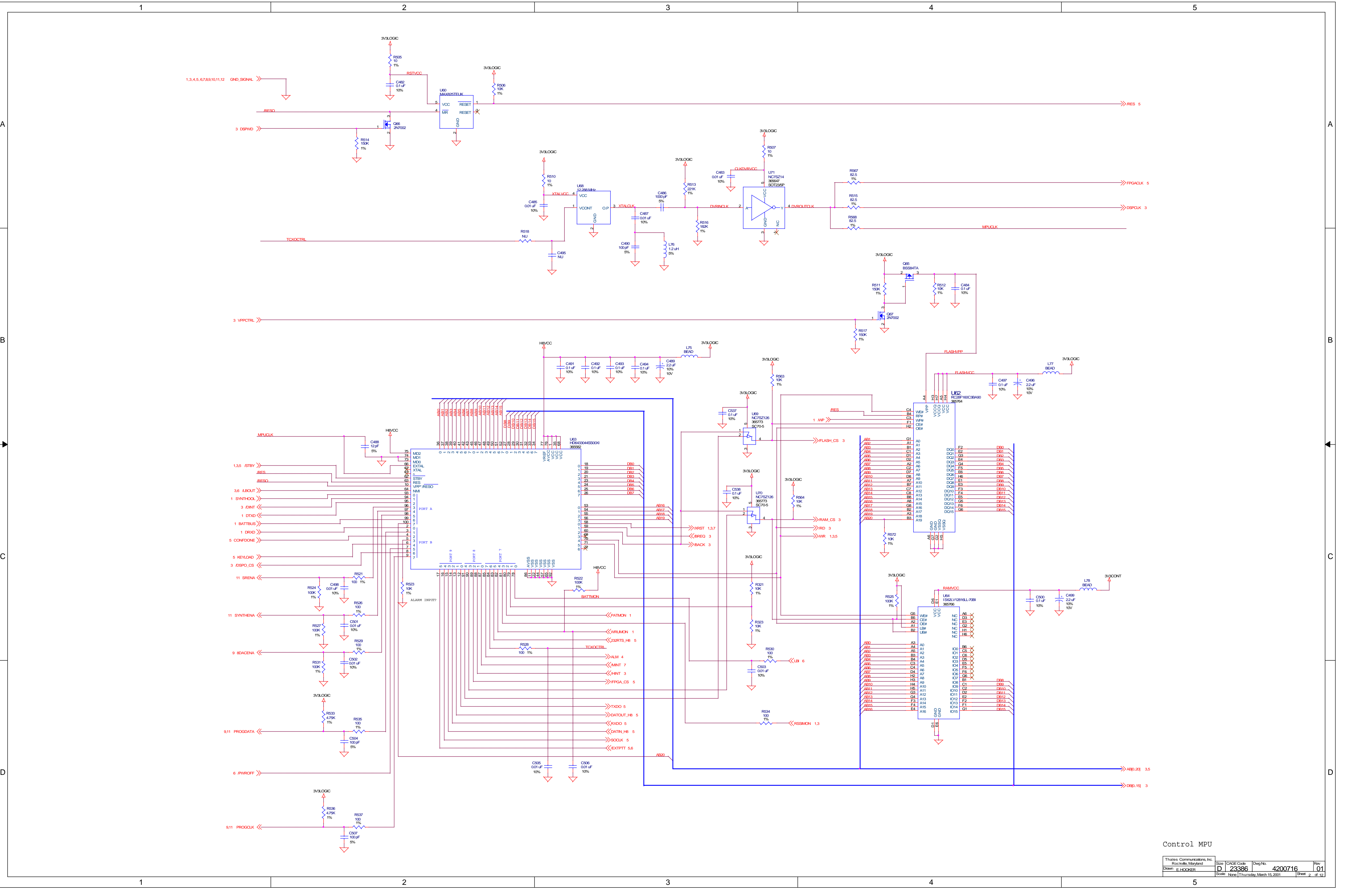
NOTES: UNLESS OTHERWISE SPECIFIED.

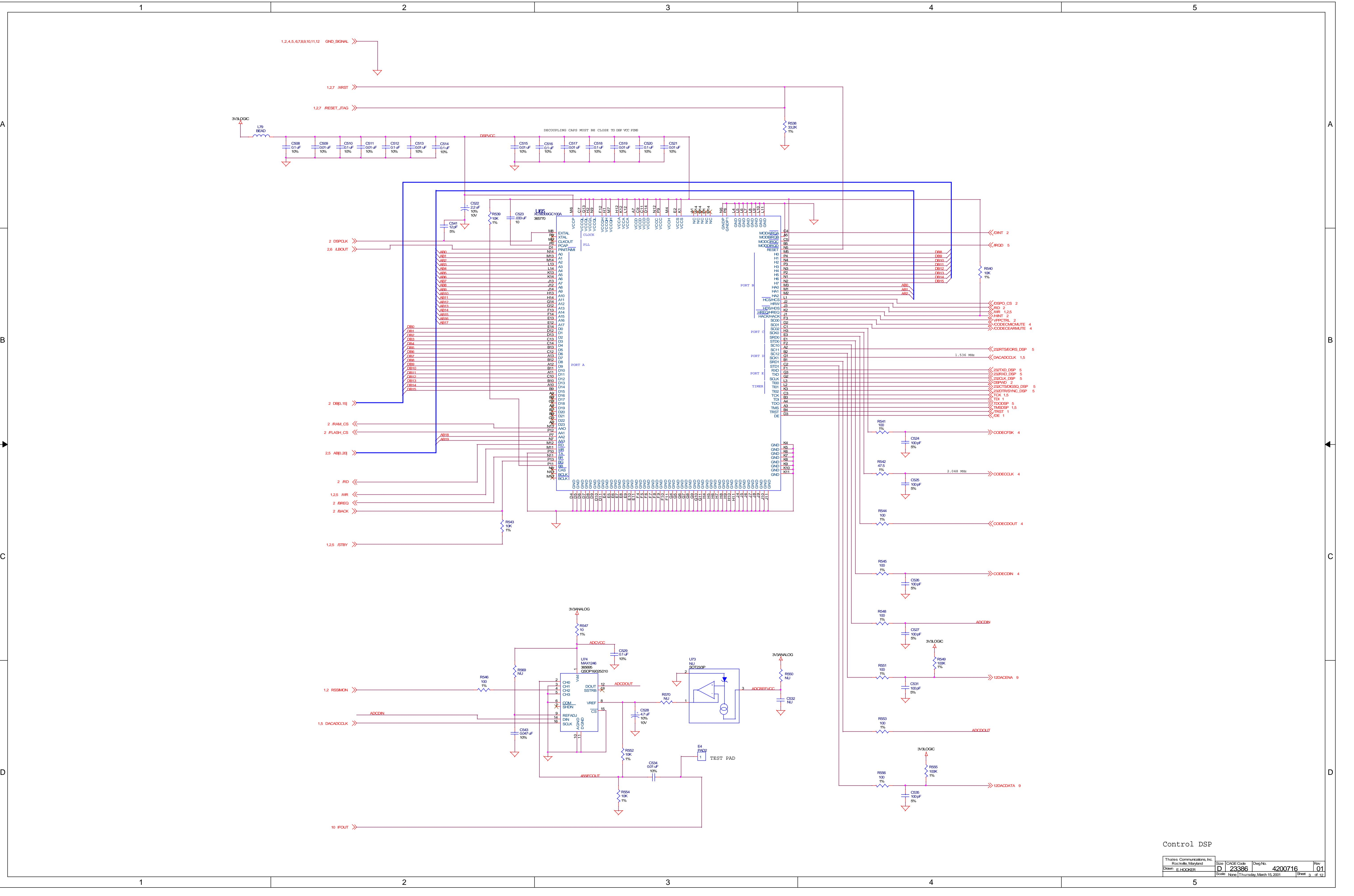
- INTERPRET DRAWING PER MIL-STD-100.
- ALL RESISTANCE VALUES ARE IN OHMS.
- CAPACITANCE VALUES ARE IN MICROFARADS.
- LAST REF DES USED:
B1,C550,D69,E4,FL6,J5,L80,P2,Q71,R578,RT1,T2,TP24,U77,Y1
- REF DES NOT USED:
C20,C24,C32,C33,C35-C37,C39,C40-C42,C44-C49,C50-C52,C54,C55,C58,C60,C62-C73,C76,C79,C80,C85,C89-C91,C93,C99,C119,C122,C147,C153,C189,C194,C197,C198,C204,C205,C207,C208,C210-C213,C217-C221,C232,C234,C238,C239,C243,C250-C255,C258-C266,C272-C274,C277,C278,C280-C283,C291,C296-C300,C313-C317,C320-C327,C329,C330,C333,C391,C394-C398,C402-C404,C530,C533,C548,D5,D6,D22,D29-D34,D51,J1,J4,L22,L23,L26,L27,L29,L32-L34,L36,L54,L57-L59,L67,P1,Q3-Q6,Q20,Q28-Q30,Q37-Q45,R13-R30,R32,R34-R43,R45,R46,R50,R53,R54,R56,R60-R63,R88,R90,R93,R108,R158,R161,R163-R168,R170,R174,R176,R184,R188-R190,R192,R194,R195,R197-R202,R207,R209-R211,R216,R221,R223,R226,R228,R231-R235,R239,R242-R249,R260,R261,R265,R267-R271,R274,R275,R277,R278,R285,R286,R289,R301-R305,R307-R314,R317,R318,R379,R383,R397,R399,R402-R405,R407,R425,R438,R441-R443,R508,R509,R519,R520,R532,TP4,TP15,TP16,TP22,TP23,U2,U5-U7,U10,U18,U22,U23,U25,U26,U30,U34,U38-U41,U61,U66,U67,U72

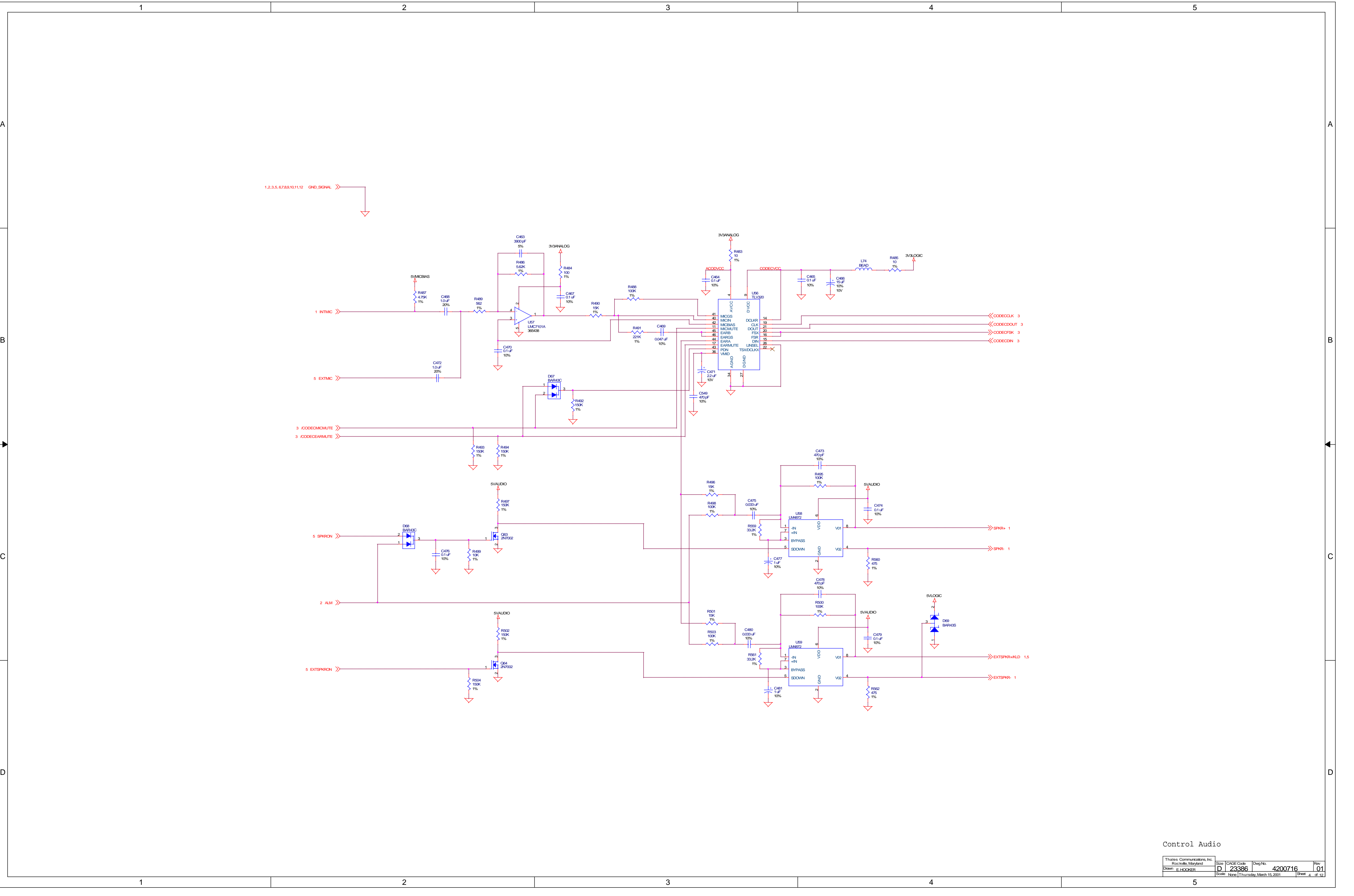


THALES COMMUNICATIONS, INC.
This information represents intellectual property which shall not be disclosed or released, except to comply with contractual requirements. This information is provided on a limited basis and does not include any rights to manufacture, or have manufactured, any equipment depicted therein.

ELEC ENG		MECH ENG		QA		MFG/TEST ENG		TECH DIR		DSGNR		ADDITIONAL APPROVALS		DATE		PART NO.		APPLICATION		SIMILAR TO		CONTRACT NO.		APPROVALS		DATE		TITLE	
																												THALES COMMUNICATIONS, INC. ROCKVILLE, MARYLAND	
																												SCHEMATIC DIAGRAM, CCA CONTROL/TRANSCIVER	
																												D 23386 4200716 01	
																												SCALE NONE Thursday, March 15, 2001 SHEET 1 OF 12	

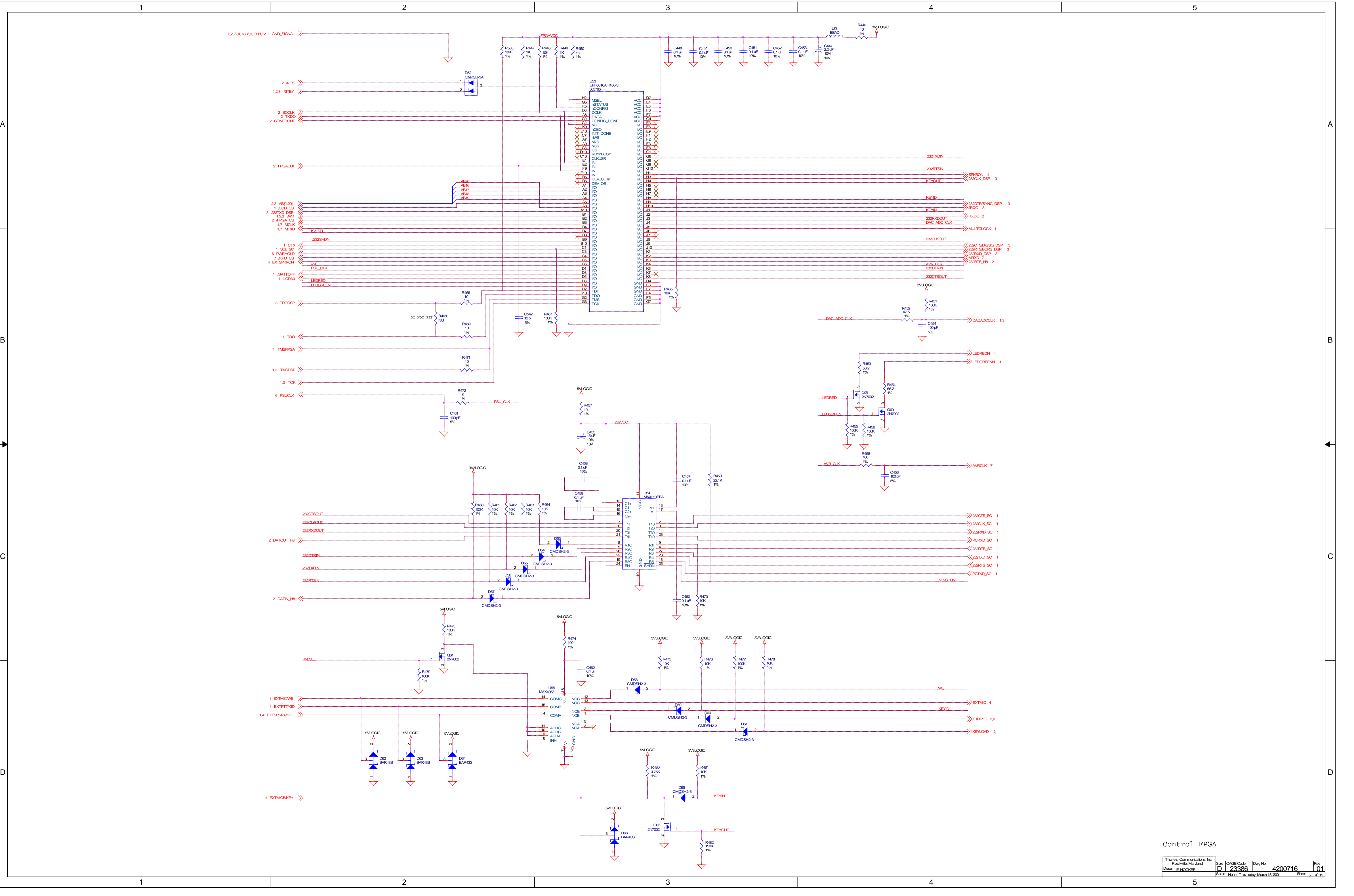


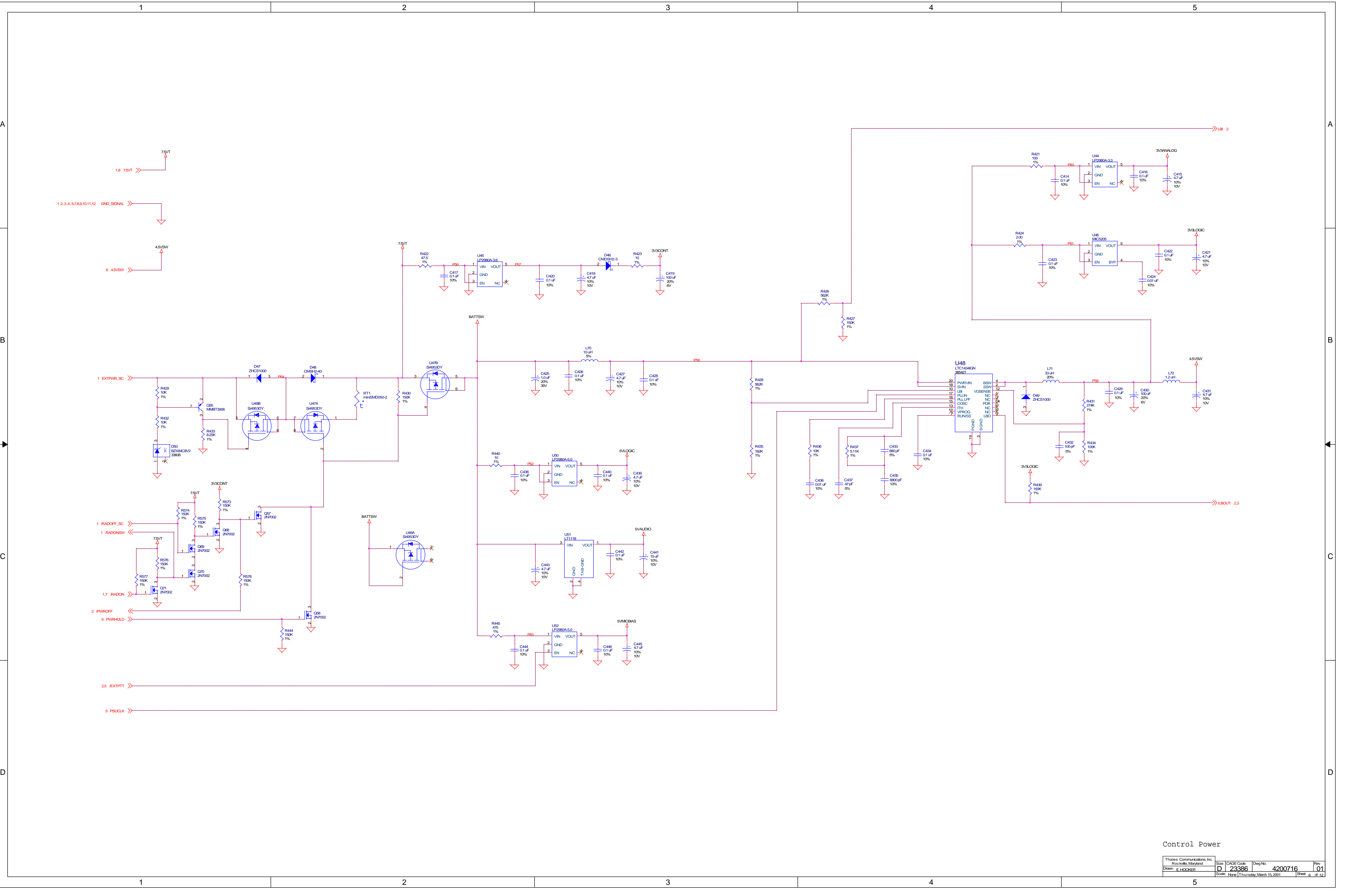


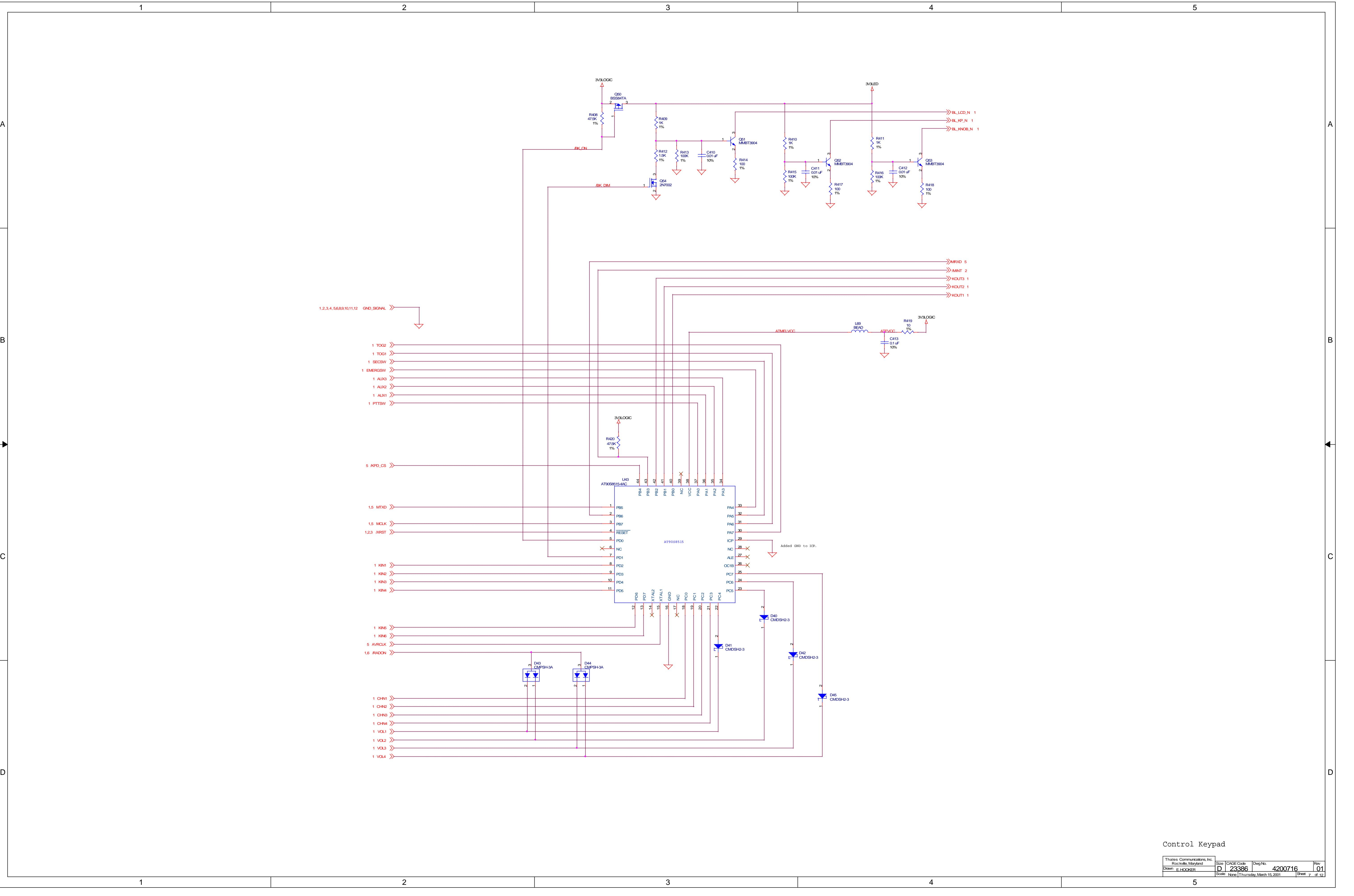


Control Audio

Thales Communications, Inc. Rochelle, Maryland	Size D	CAGE Code 23386	Dwg No. 4200716	Rev. 01
Drawn E. HOOGER	Scale None	Date Thursday, March 15, 2001	Sheet 4	of 12

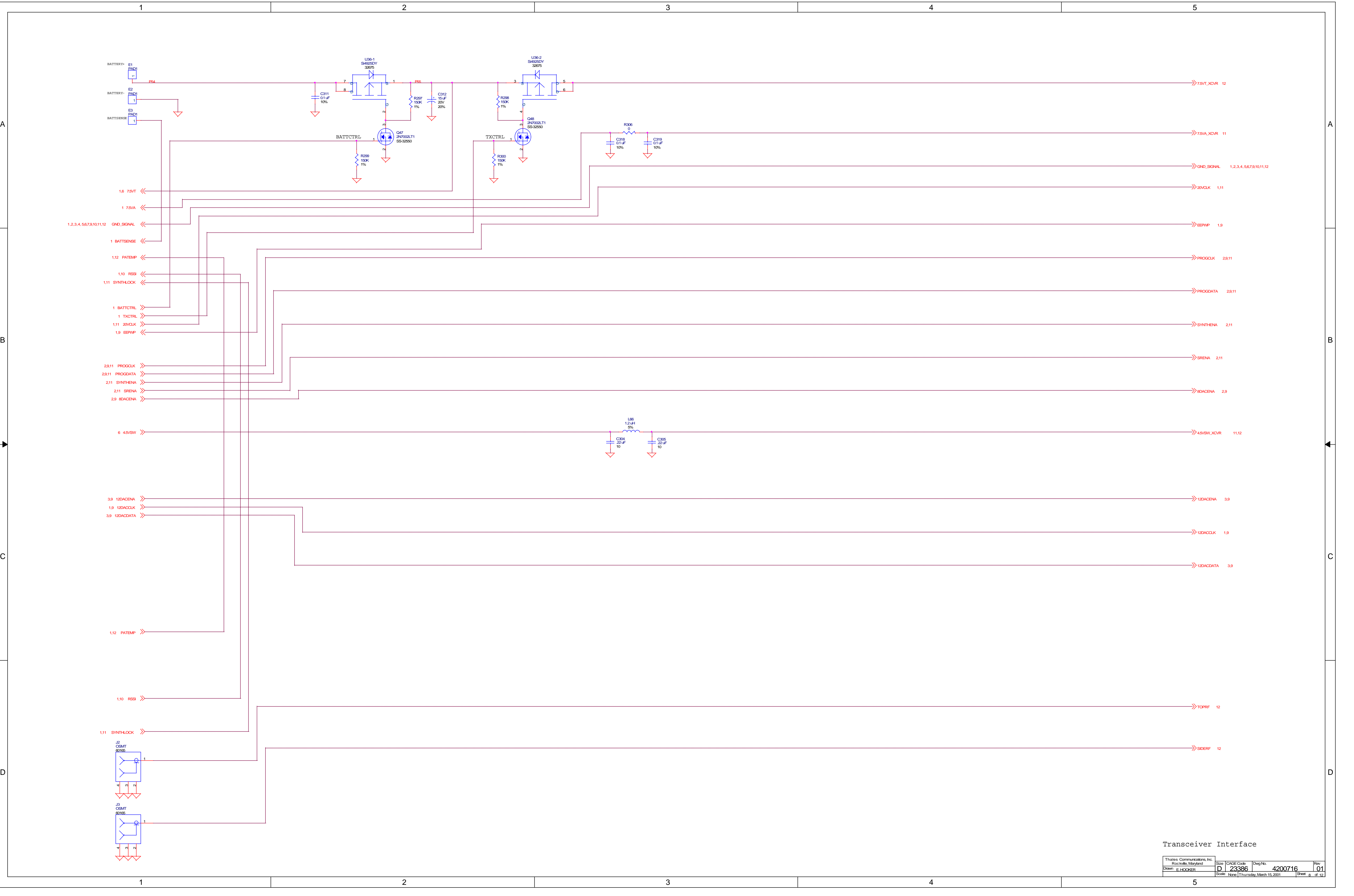


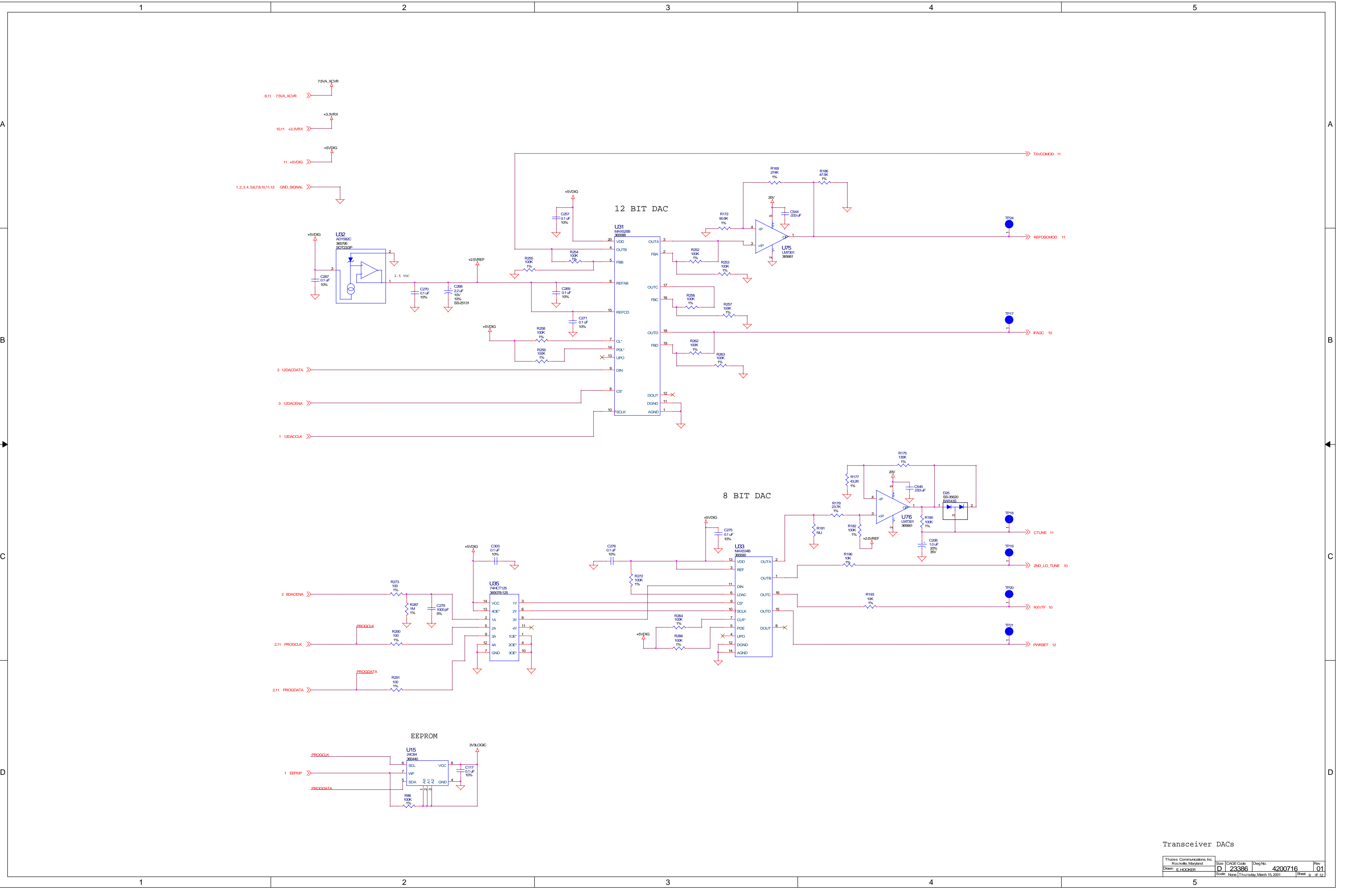


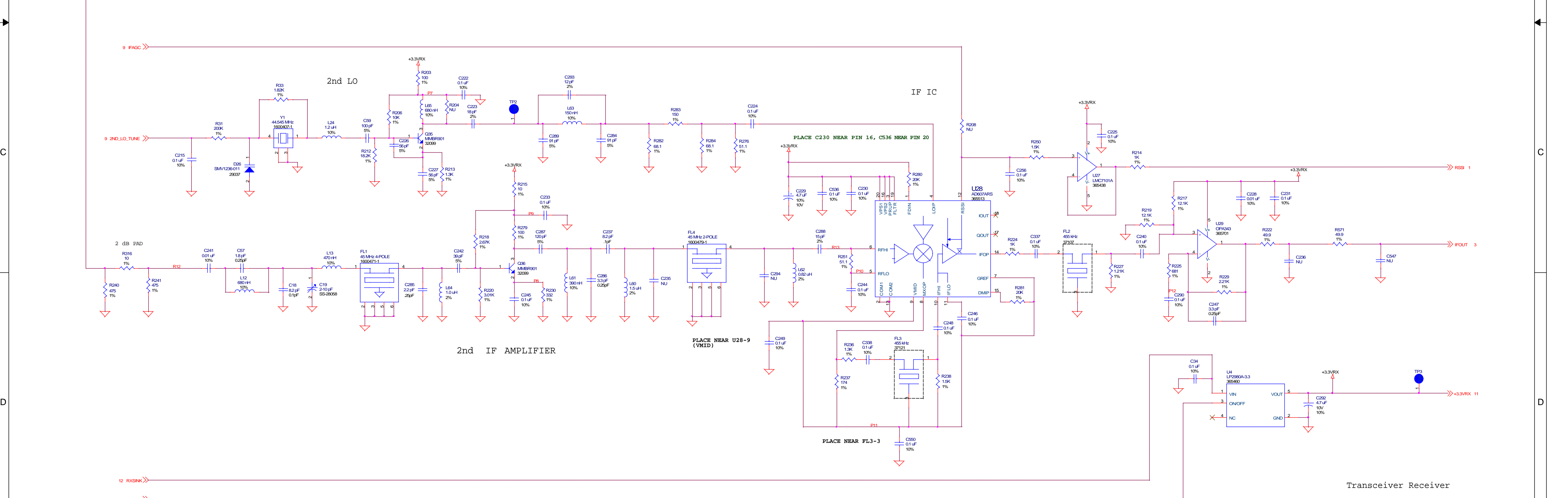
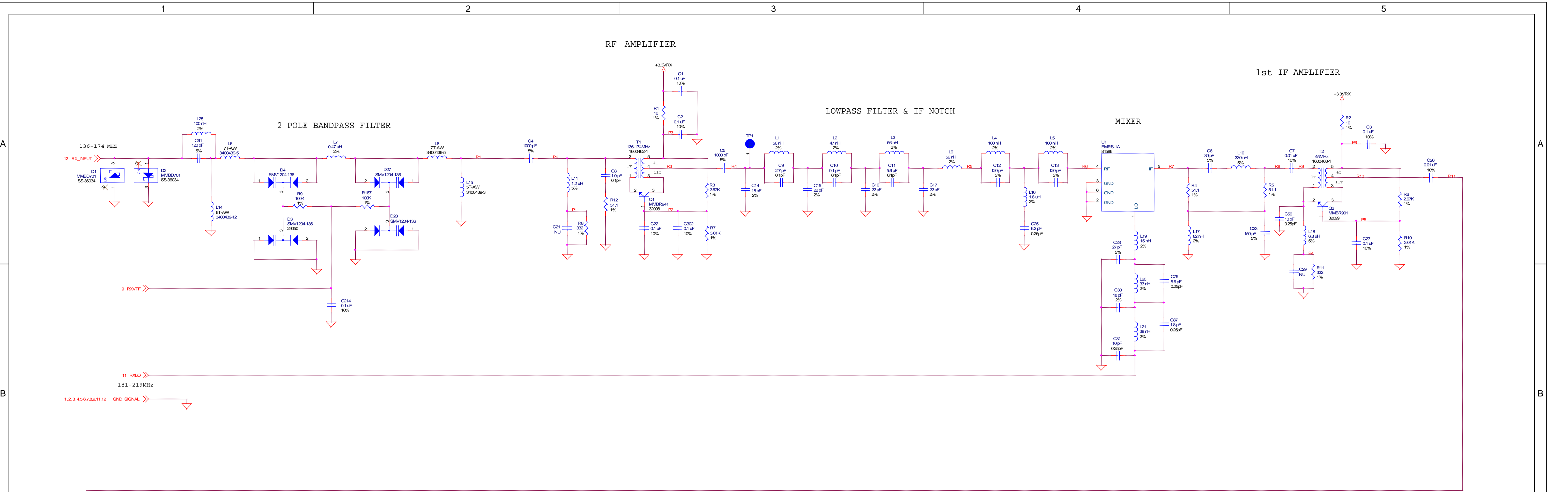


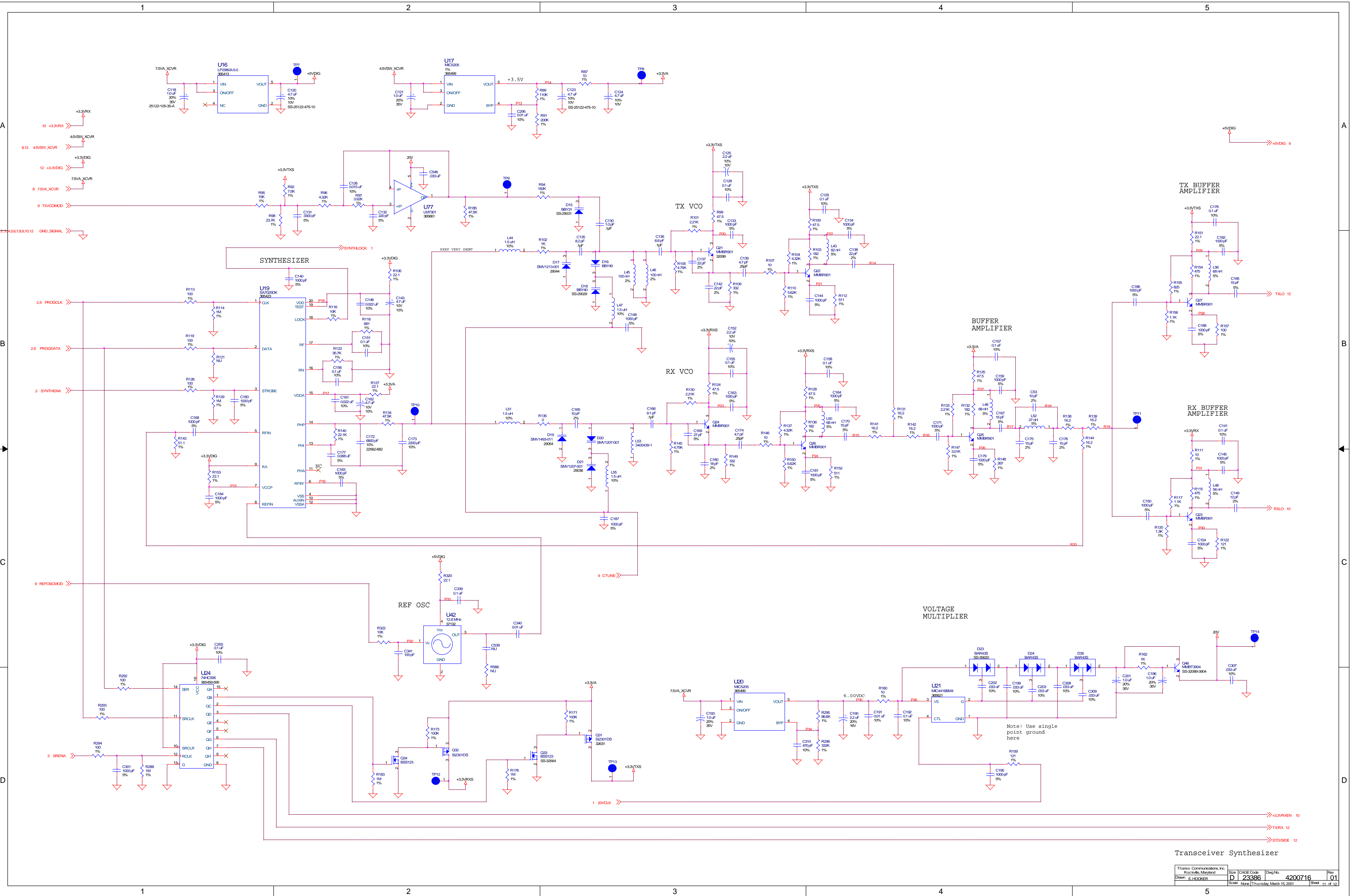
Control Keypad

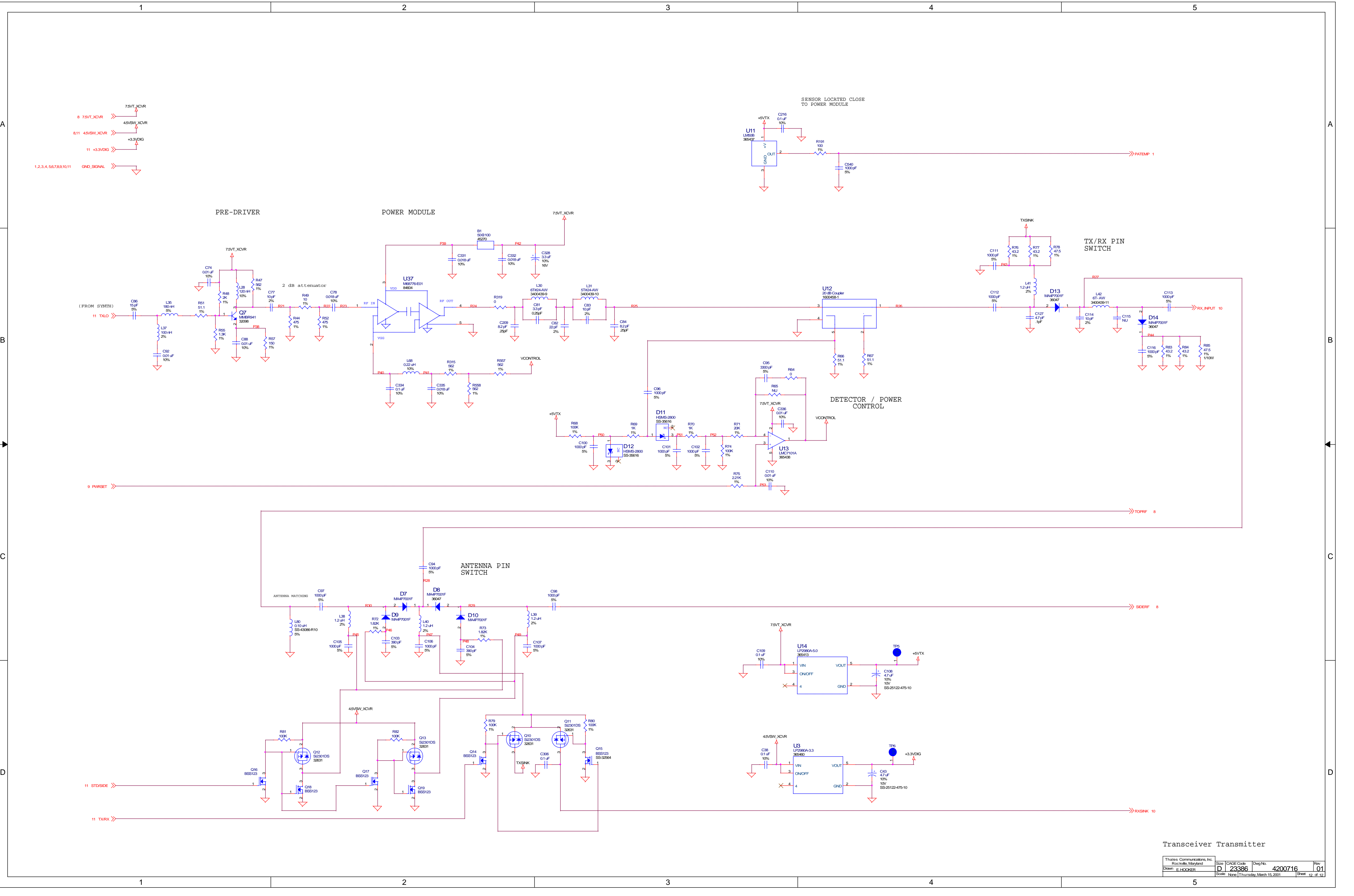
Thales Communications, Inc. Rochester, Maryland	Size D	CAGE Code 23386	Dwg No. 4200716	Rev. 01
Drawn E. HOOKER	Scale None	Date Thursday, March 15, 2001	Sheet 7	of 12











Transceiver Transmitter

Thales Communications, Inc. Rockville, Maryland	Drawn E. HOOKER	Size D	CAGE Code 23386	Dwg No. 4200716	Rev 01
Scale None Thursday, March 15, 2001					Sheet 12 of 12