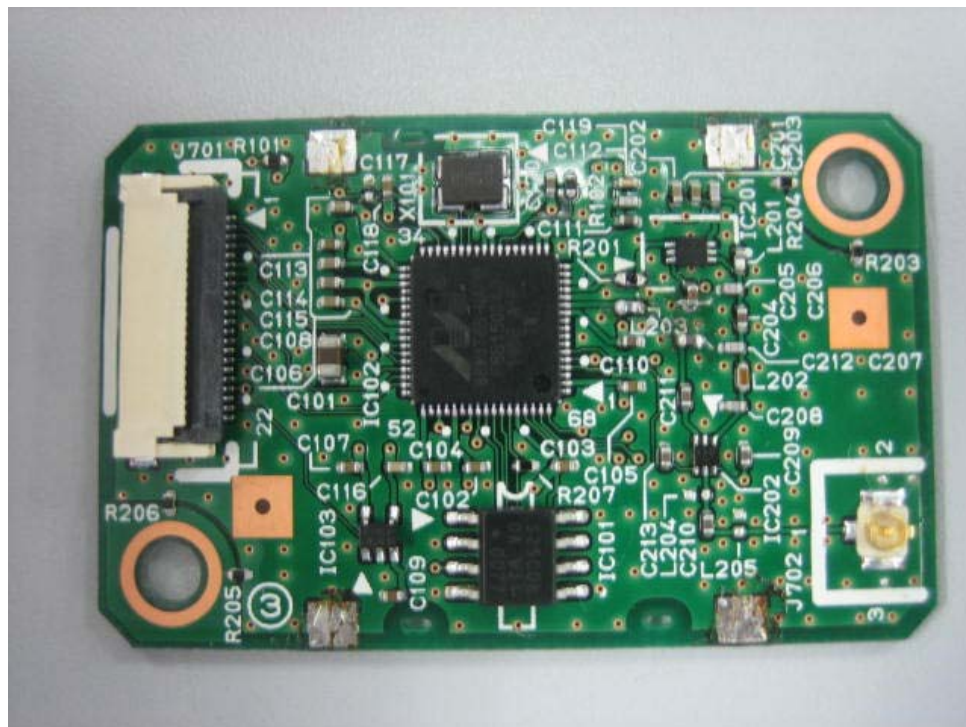




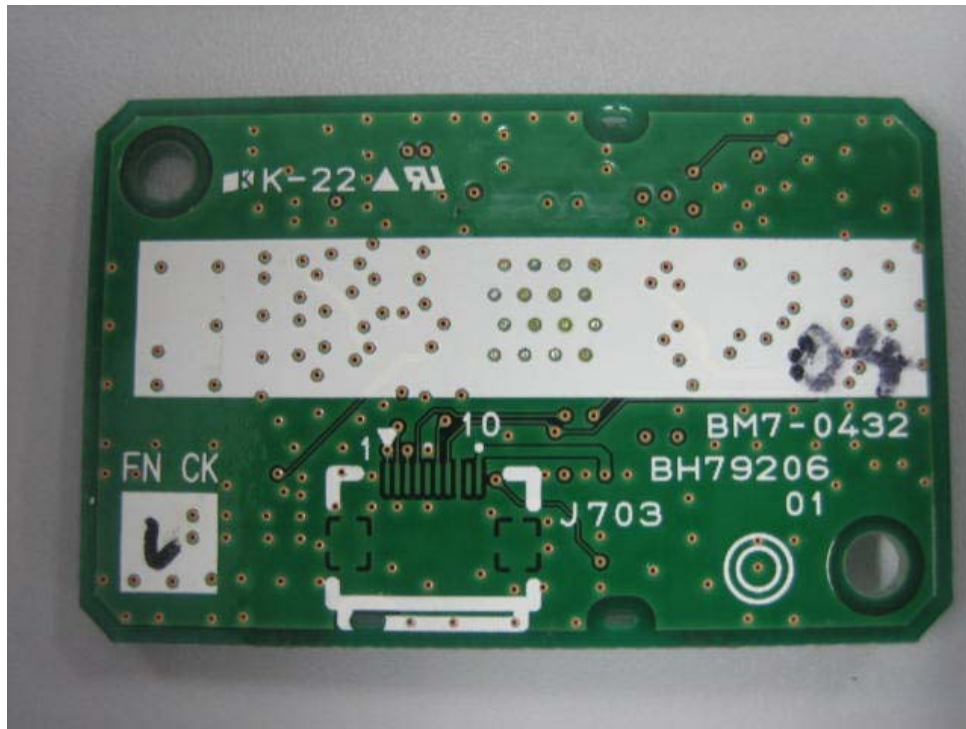
Component Side (with Shield)



Component Side (without Shield)

Photo

Canon Inc.
Wireless LAN Module [BM70432]

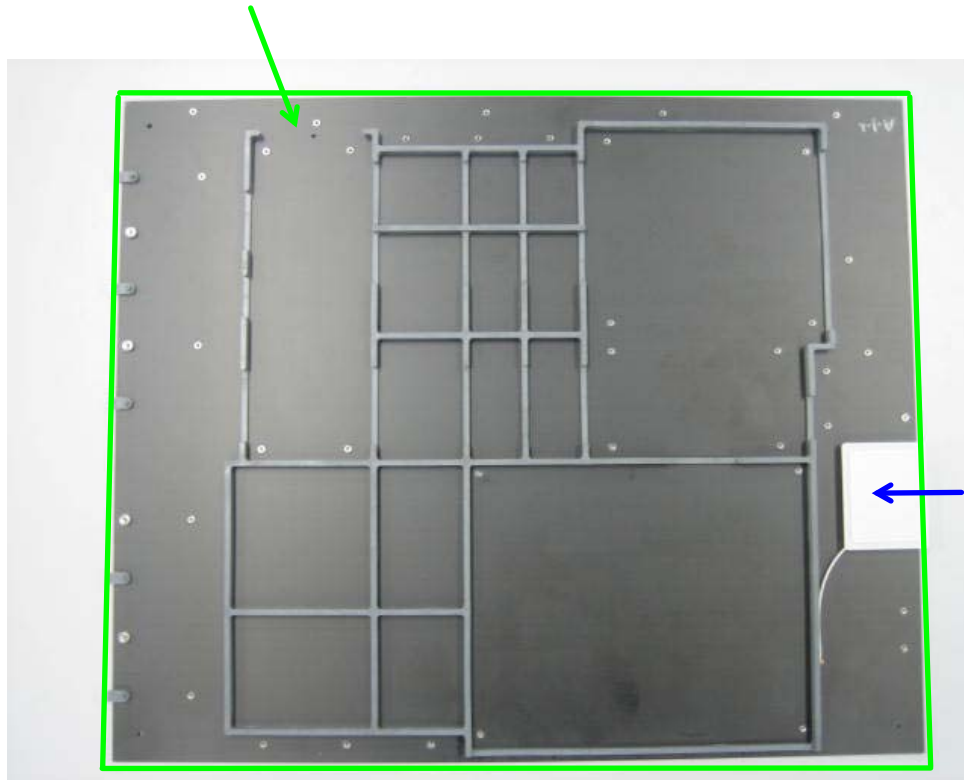


Soldering Side

Photo

Canon Inc. Wireless LAN Module [BM70432]

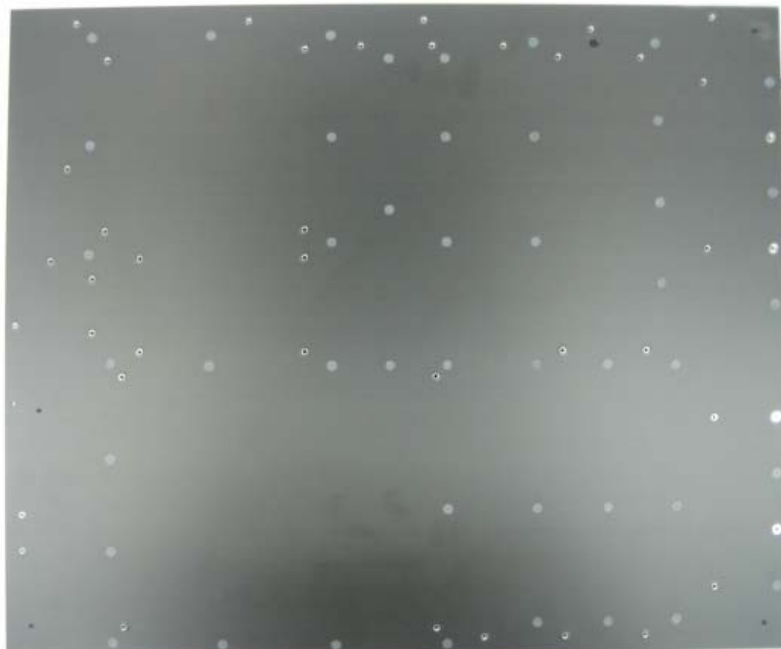
This panel is needed for impedance matching for an antenna. Without this panel, an antenna can't be operated normally.



Antenna

The radiated part is located on only an antenna. Refer to antenna specification, EMC test report and SAR test report.

Antenna (Front)



Antenna (Rear)