

Wireless Microphone

E Instructions

Part Names

- **Receiver**
 - (1) <TX1> TX1 lamp
 - (2) <MENU> Menu button
 - (3) Mounting foot locking lever
 - (4) Lock-release button
 - (5) <TX2> TX2 lamp
 - (6) Tally lamp
 - (7) Contacts
 - (8) Mounting foot locking pin
 - (9) Mounting foot
 - (10) Cover
- **Transmitter (Wireless Microphone)**
 - (1) Reset button
 - (2) Movie shooting button
 - (3) <MIC> External microphone IN terminal
 - (4) <POWER> Power lamp
 - (5) <LINK> Wireless connection lamp
 - (6) <MUTE> Power/mute button
 - (7) Microphone
 - (8) Card slot
 - (9) Access lamp
 - (10) Clip
 - (11) Digital terminal
 - (12) Wind screen

Wireless Microphone is an external movie microphone designed for cameras equipped with a multi-function shoe. Before use, also read the camera instruction manual besides these instructions.

Keep the instructions in a safe place for future reference.

- Detailed instructions are available in the Advanced User Guide. To view the guide, access it online at the website in Figure A.

■ Attaching the Receiver to a Camera

- Make sure the camera is off.
- Remove the shoe cover from the multi-function shoe (Fig. 1).
- Remove the cover from the receiver (Fig. 2).
- Insert the receiver mounting foot into the multi-function shoe until it clicks into place (Fig. 3).
- Slide the mounting foot locking lever to the <OFF> position (until it clicks) to secure the microphone (Fig. 4).

■ Detaching the Receiver from a Camera

- If you will not be using this accessory, remove the receiver before storing it.
- Make sure the receiver and camera are off.
 - Hold down the lock-release button and slide the locking lever to unlock it (Fig. 5).
 - Remove the receiver from the camera (Fig. 6) and attach the cover over the receiver contacts.

■ Using the Wireless Microphone

- To reduce the sound of wind or similar noise, attach the wind screen (Fig. 7).
- When audio will be recorded to a card, insert a card (Fig. 8).
- When using Lavalier Microphone LM-E1, connect it to the wireless microphone (Fig. 9).

Safety Instructions

Be sure to read these instructions in order to operate the product safely. Follow these instructions to prevent injury or harm to the operator of the product or others.

⚠ WARNING : Denotes the risk of serious injury or death.

- Keep the product out of the reach of young children.
The parts or provided items of cameras or accessories are dangerous if swallowed. If swallowed, seek immediate medical assistance.
- Do not disassemble or modify the product.
- Do not expose the product to strong shocks or vibration.
- Do not touch any exposed internal parts.
- Stop using the product in any case of unusual circumstances such as the presence of smoke or a strange smell.
- Do not use organic solvents such as alcohol, benzene or paint thinner to clean the product.
- Do not get the product wet. Do not insert foreign objects or liquids into the product.
- Do not use the product where flammable gases may be present.
This may cause electric shock, explosion or fire.
- Do not touch the battery charger or power connected to a power outlet during lightning storms.
This may cause electric shock.
- Observe the following instructions when using a battery charger or AC adapter.
 - Periodically remove any dust buildup from the power plug and power outlet using a dry cloth.
 - Do not plug in or unplug the product with wet hands.
 - Do not use the product if the power plug is not fully inserted into the power outlet.
 - Do not expose the power plug and terminals to dirt or let them come into contact with metallic pins or other metal objects.
 - Do not touch the battery charger or AC adapter connected to a power outlet during lightning storms.
- Do not wrap the product in cloth or other materials when in use or shortly after use when the product is still warm in temperature.
- Do not leave the product connected to a power source for long periods of time.
- Do not charge batteries/battery packs at temperatures outside the range of 5 - 40 °C (41 - 104 °F).
This may cause electric shock, explosion or fire.
- Do not allow the product to maintain contact with the same area of skin for extended periods of time during use.
- Follow any indications to turn off the product in places where its use is forbidden.
Not doing so may cause other equipment to malfunction due to the effect of electromagnetic waves and even result in accidents.

⚠ CAUTION: Follow the cautions below. Otherwise physical injury or property damage may result.

- Do not leave the product in places exposed to extremely high or low temperatures.
The product may become extremely hot/cold and cause burns or injury when touched.

■ Specifications

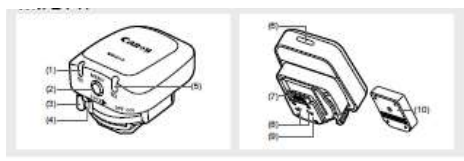
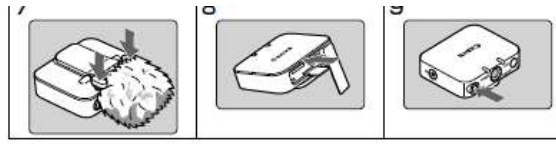
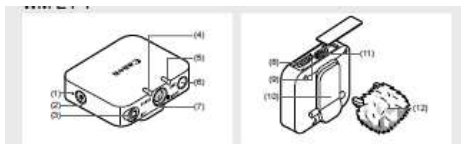
Type:	Bluetooth LE Audio support Back-electret condenser microphone
Directivity:	Omnidirectional
Frequency response:	120–20,000 Hz
Standards compliance:	Compliant with Bluetooth Specification Version 5.2
● Receiver Dimensions:	Approx. 45.4 × 36.4 × 52.8 mm /
● Wireless microphone Dimensions:	Approx. 54.0 × 23.2 × 47.5 mm /
Working humidity:	85% or less
● All data above based on Canon testing standards.	
● Product specifications and appearance are subject to change without notice.	

■ Precautions for Wireless Features

Receiver Model: DS586233

Transmitter Model: DS586234

- Countries and Regions Permitting Wireless Function Use
 - Use of wireless functions is restricted in some countries and regions, and illegal use may be punishable under national or local regulations.
To avoid violating wireless regulations, visit the Canon website to check where use is allowed.
Note that Canon cannot be held liable for any problems arising from wireless function use in other countries and regions.
- Doing any of the following may incur legal penalties:
 - Altering or modifying the product
 - Removing the certification labels from the product
- Do not use the wireless function of this product near medical equipment or other electronic equipment.
Use of the wireless function near medical equipment or other electronic equipment may affect operation of those devices.



Canon

FCC/ISED(IC) Notice
Receiver Model: DS588233 (FCC ID:AZD250, IC: 498J-250)
Transmitter Model: DS588234 (FCC ID:AZD251, IC: 498J-251)

This device contains licence-exempt transmitter(s)/receiver(s) that comply with Innovation, Science and Economic Development Canada's licence-exempt RSS(s). Operation is subject to the following two conditions:
(1) This device may not cause interference.
(2) This device must accept any interference, including interference that may cause undesired operation of the device.
This transmitter must not be co-located or operated in conjunction with any other antenna or transmitter.

The available scientific evidence does not show that any health problems are associated with using low power wireless devices. There is no proof, however, that these low power wireless devices are absolutely safe. Low power Wireless devices emit low levels of radio frequency energy (RF) in the microwave range while being used. Whereas high levels of RF can produce health effects (by heating tissue), exposure of low-level RF that does not produce heating effects causes no known adverse health effects. Many studies of low-level RF exposures have not found any biological effects. Some studies have suggested that some biological effects might occur, but such findings have not been confirmed by additional research. This model has been tested and found to comply with FCC/ISED radiation exposure limits set forth for an uncontrolled environment and meets the FCC radio frequency (RF) Exposure Guidelines and RSS-102 of the ISED radio frequency (RF) Exposure rules.

FCC Notice
Receiver Model: DS588233
Transmitter Model: DS588234
This device complies with Part 15 of the FCC Rules. Operation is subject to the following two conditions:
(1) this device may not cause harmful interference, and
(2) this device must accept any interference received, including interference that may cause undesired operation.

Note: This equipment has been tested and found to comply with the limits for Class B digital devices, pursuant to Part 15 of the FCC rules. These limits are designed to provide reasonable protection against harmful interference in a residential installation. This equipment generates, uses and can radiate radio frequency energy and, if not installed and used in accordance with the instructions, may cause harmful interference to radio communications. However, there is no guarantee that interference will not occur in a particular installation.
If this equipment does cause harmful interference to radio or television reception, which can be determined by turning the equipment off and on, the user is encouraged to try to correct the interference by one or more of the following measures:

- Reorient or relocate the receiving antenna.
- Increase the separation between the equipment and receiver.
- Connect the equipment into an outlet on a circuit different from that to which the receiver is connected.
- Consult the dealer or an experienced radio/TV technician for help.

The cable with the ferrite core provided with the digital camera must be used with this equipment in order to comply with Class B limits in Subpart B of Part 15 of the FCC rules.

Do not make any changes or modifications to the equipment unless otherwise specified in the manual. If such changes or modifications should be made, you could be required to stop operation of the equipment.

Canon U.S.A., Inc.
One Canon Park, Melville, New York 11747, U.S.A.
Tel No. 1-800-OK-CANON (1-800-652-2666)

Canadian Radio Interference Regulations
CAN ICES-3 (B)/NMB-3 (B)

Complies with
IMDA Standards
DB00671

Keep batteries out of the reach of children.

CAUTION

Observe the following precautions when using, transporting or storing batteries or battery packs, including built-in batteries.
Avoid extremely high or low temperatures. Leaving a battery in extremely hot places may cause leaks of flammable liquids or gases and present a risk of fire or explosion.

Avoid conditions of low pressure at high altitudes. Leaving a battery in extremely low pressure conditions may cause leaks of flammable liquids or gases and present a risk of fire or explosion.
Do not throw batteries or battery packs into an open fire, stove or furnace and do not crush, puncture or disassemble batteries. This may cause explosion.

Hereby, Canon Inc. declares that this equipment is in compliance with Directive 2014/53/EU.
The full text of the EU declaration of conformity is available at the following Internet address:
<http://www.canon-europe.com/ce-documentation>

Bluetooth Frequency range: 2402 – 2480 MHz
Bluetooth Maximum output power: 10 dBm

For UK

Hereby, Canon Inc. declares that this equipment is in compliance with the relevant statutory requirements.
The full text of the declaration of conformity is available at the following internet address:
<https://www.canon-europe.com/ce-documentation/>

● Use in combination with genuine Canon accessories is recommended.



USA and Canada only:

The Lithium ion/polymer battery that powers the product is recyclable.
Please call 1-800-8-BATTERY for information on how to recycle this battery.

CAUTION

DISPOSE OF USED BATTERIES ACCORDING TO LOCAL REGULATIONS.

■ Graphical symbols placed on the equipment

Direct current

CANON INC.

30-2, Shimomaruko 3-chome, Ohta-ku, Tokyo 146-8501, Japan