

EXHIBIT 9**Internal Photographs**

(Pursuant to FCC Part 2.1033(b)(7), 2.1033(c)(12) and RSP 100 Annex C)

The following photographs are attached.

	<u>Exhibit</u>
1. RF board <u>with</u> Chassis and Housing (Front Side), Model MTP8550Ex	9A
2. RF board <u>with</u> Chassis and Housing (Front Side), Model MTP8500Ex	9B
3. RF board <u>with</u> Chassis and Housing (Back Side), Model MTP8550Ex / MTP8500Ex	9C
4. RF board <u>with</u> Shields (Top), Model MTP8550Ex / MTP8500Ex	9D
5. RF board <u>without</u> Shields (Top), Model MTP8550Ex / MTP8500Ex	9E
6. RF board <u>with</u> Shields (Bottom), Model MTP8550Ex / MTP8500Ex	9F
7. RF board <u>without</u> Shields (Bottom), Model MTP8550Ex / MTP8500Ex	9G
8. Keypad Flex (Front and Back Side), Model MTP8550Ex	9H
9. Keypad Flex (Front and Back Side), Model MTP8500Ex	9I

Exhibits 9A



RF Board with Chassis and Housing (Front Side), Model MTP8550Ex

Exhibit 9B



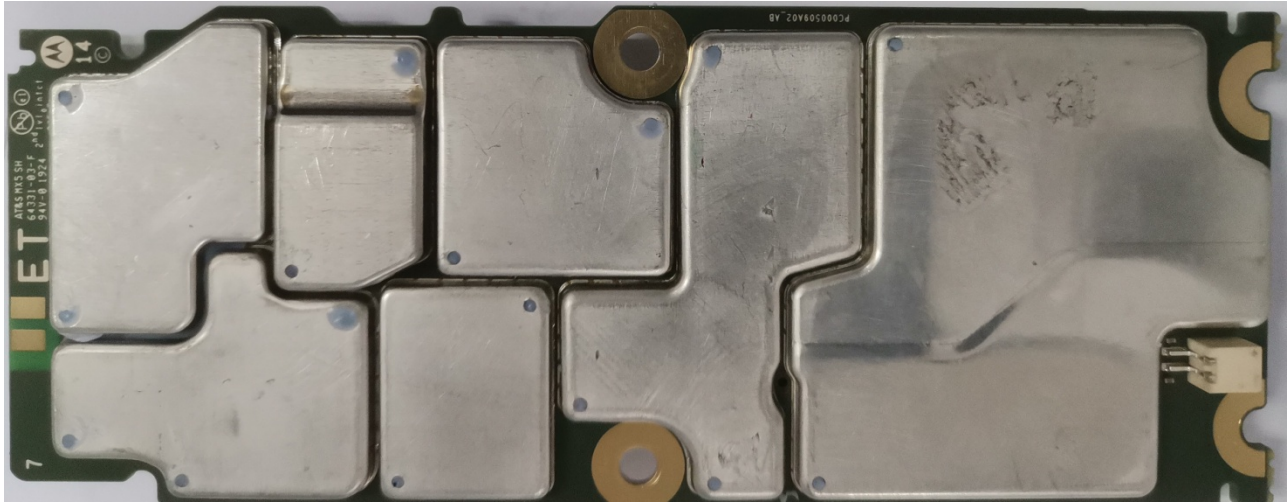
RF board with Chassis and Housing (Front Side), Model MTP8500Ex

Exhibit 9C



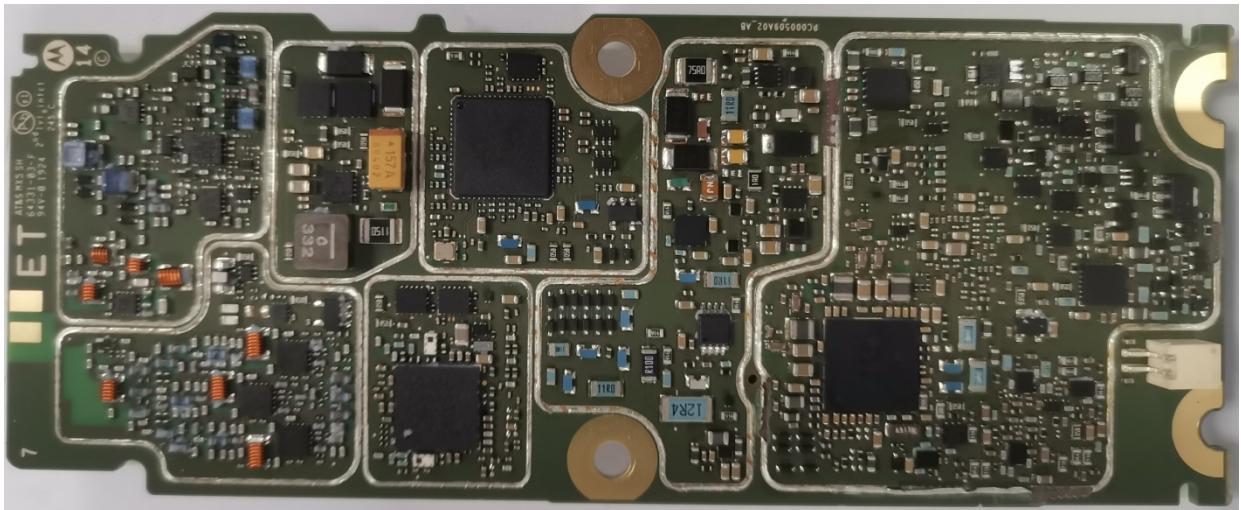
RF Board with Chassis and Housing (Back Side), Model MTP8550Ex / MTP8500Ex

Exhibit 9D



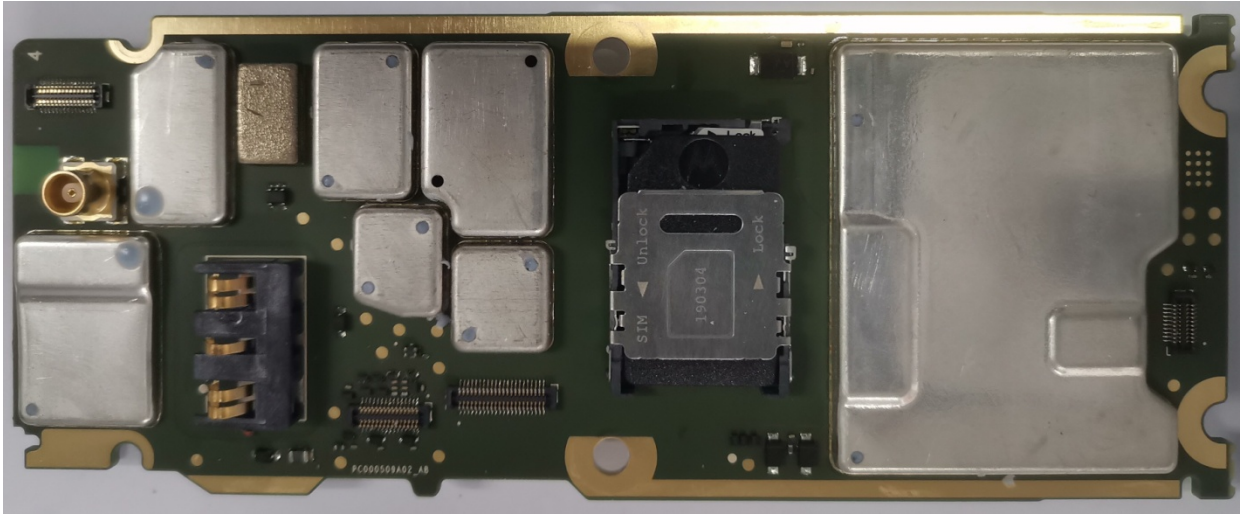
RF board with Shields (Top), Model MTP8550Ex / MTP8500Ex

Exhibit 9E



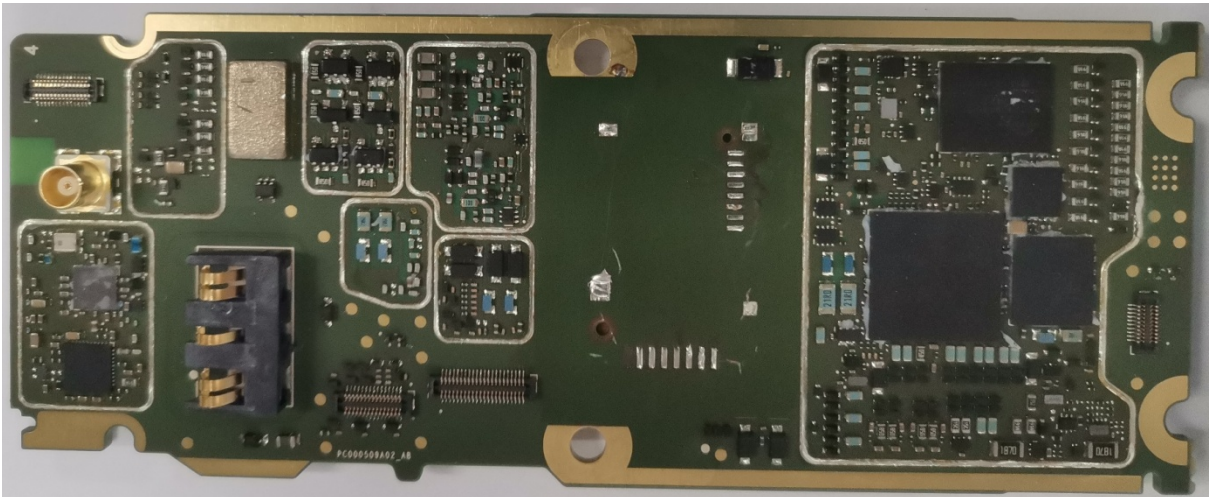
RF board without Shields (Top), Model MTP8550Ex / MTP8500Ex

Exhibit 9F



RF board with Shields (Bottom), Model MTP8550Ex / MTP8500Ex

Exhibit 9G

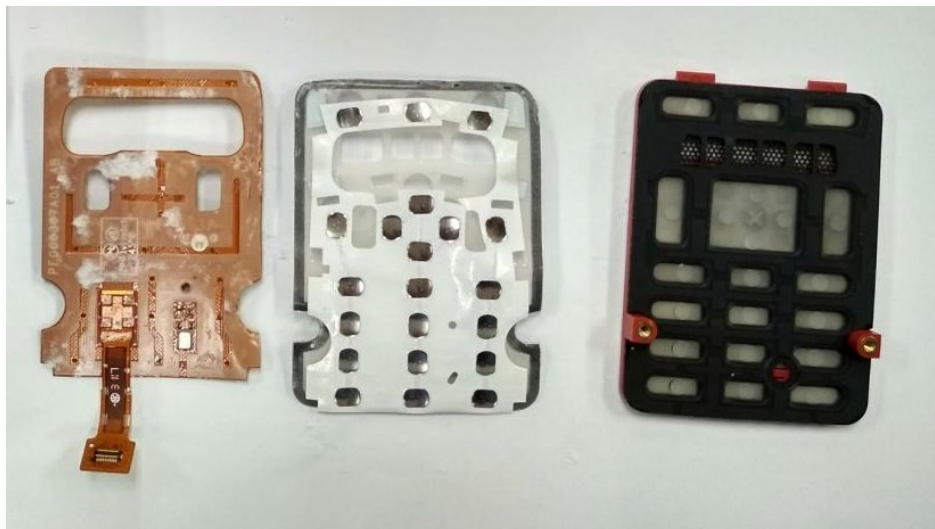


RF board without Shields (Bottom), Model MTP8550Ex / MTP8500Ex

Exhibit 9H



Front Side



Back Side

Keypad Flex (Front and Back Side), Model MTP8550Ex

Exhibit 9I



Front Side



Back Side

Keypad Flex (Front and Back Side), Model MTP8500Ex

***** END *****