

Internal Photographs

The following photographs are attached.

Exhibit

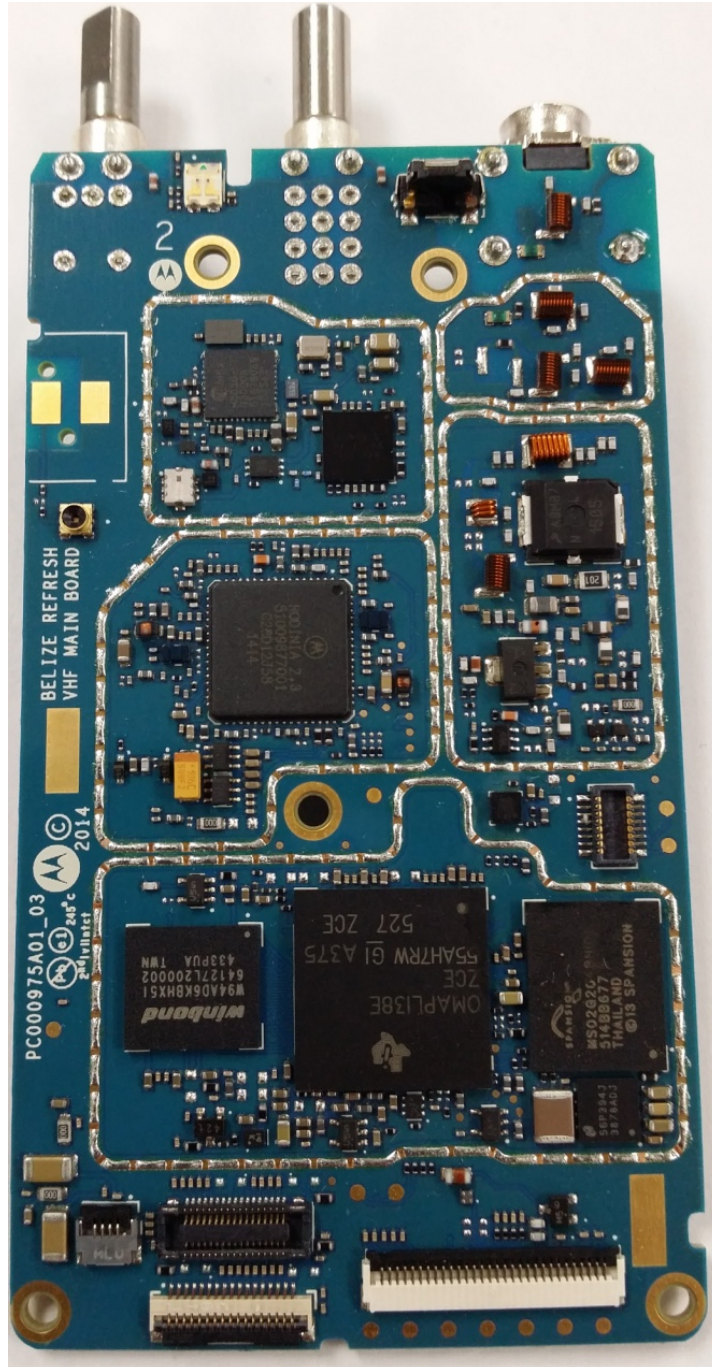
| | |
|--|----|
| 1. RF board with Shields (Top). | 9A |
| 2. RF board without Shields (Top). | 9B |
| 3. RF board with Shields (Bottom). | 9C |
| 4. RF board without Shields (Bottom). | 9D |
| 5. RF board <u>with</u> chassis and housing (front side) | 9E |
| 6. Chassis and Housing (back side) | 9F |
| 7. Keypad board (Top) | 9G |
| 8. Keypad board (Bottom). | 9H |
| 9. Interface Board (Top) | 9I |
| 10. Interface Board (Bottom) | 9J |
| 11. GOB board with Shields (Top). | 9K |
| 10. GOB board without Shields (Top). | 9L |
| 11. GOB board (Bottom). | 9M |
| 12. Exploded View of FKP radio | 9N |
| 13. Exploded View of NKP radio | 9O |

Exhibits 9A



RF board with Shields (Top)

Exhibit 9B



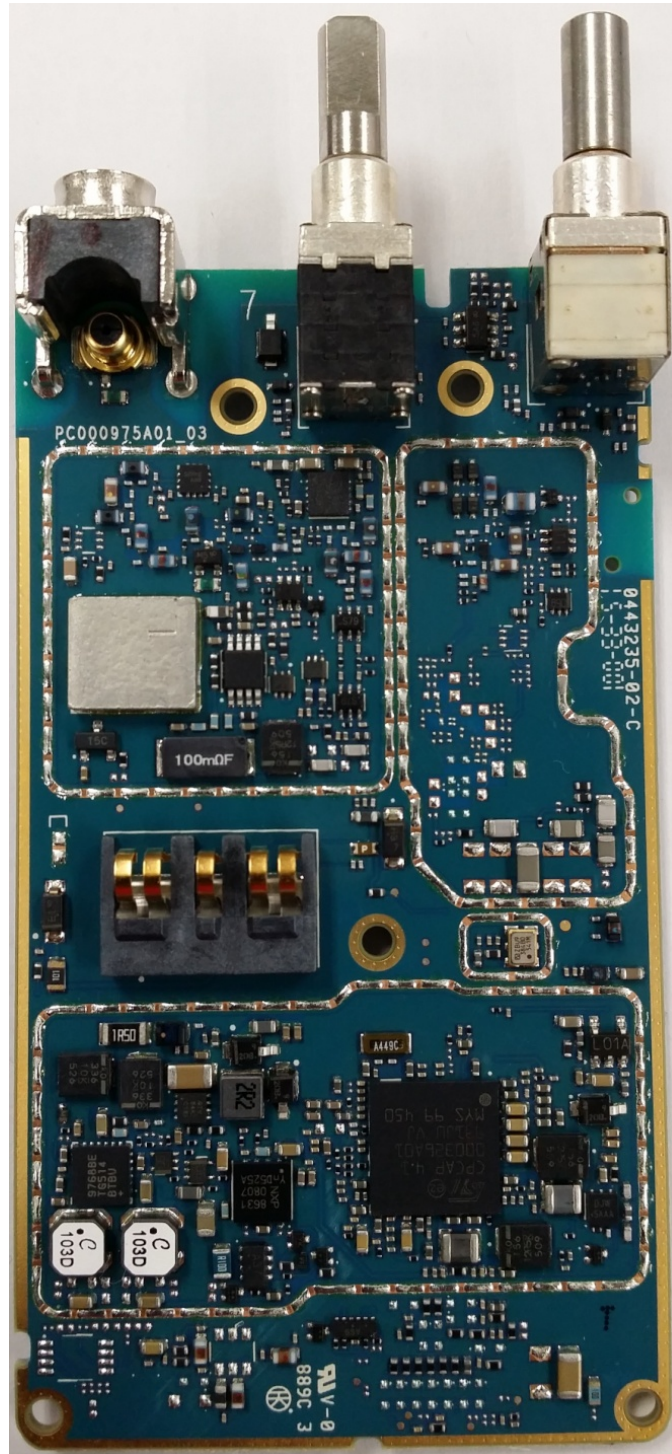
RF board without Shields (Top)

Exhibit 9C



RF board with Shields (Bottom)

Exhibit 9D



RF board without Shields (Bottom)

Exhibit 9E



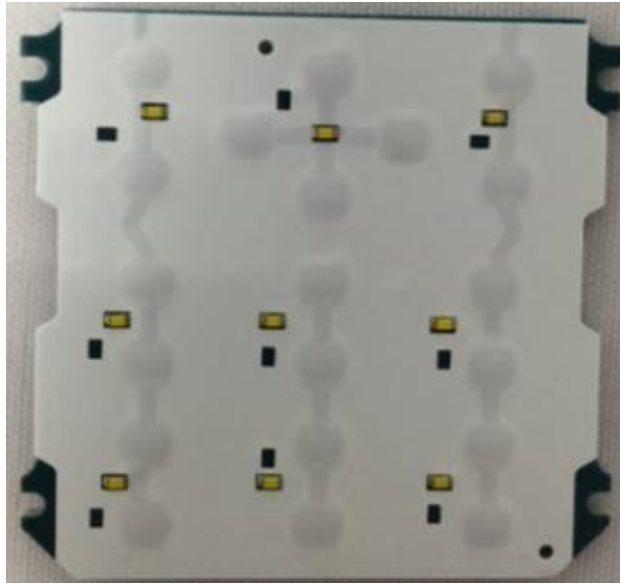
RF board with chassis and housing (front side)

Exhibit 9F



Chassis and Housing (back side)

Exhibit 9G



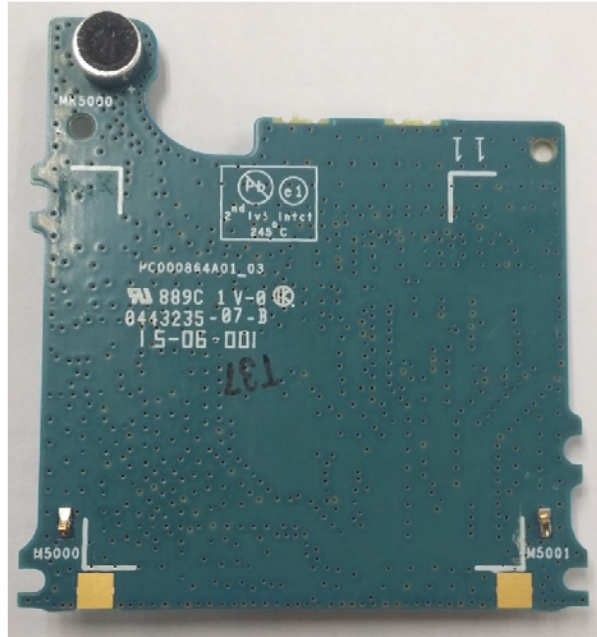
Keypad board (Top)

Exhibit 9H



Keypad board (Bottom)

Exhibit 9I



Interface board (Top)

Exhibit 9J



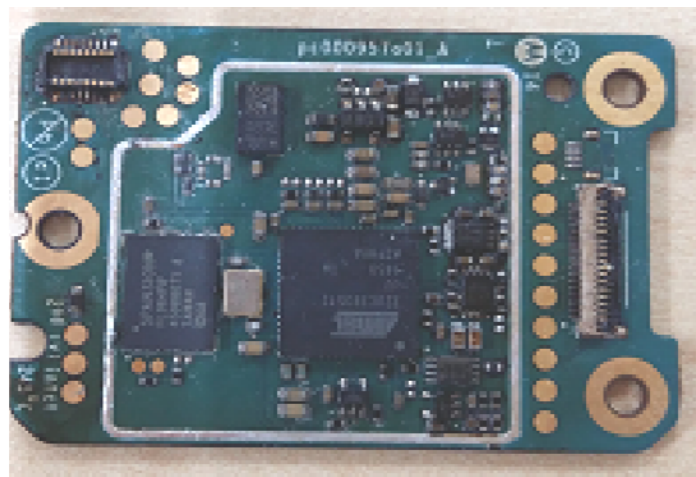
Interface board (Bottom)

Exhibit 9K



GOB board with Shields (Top)

Exhibit 9L



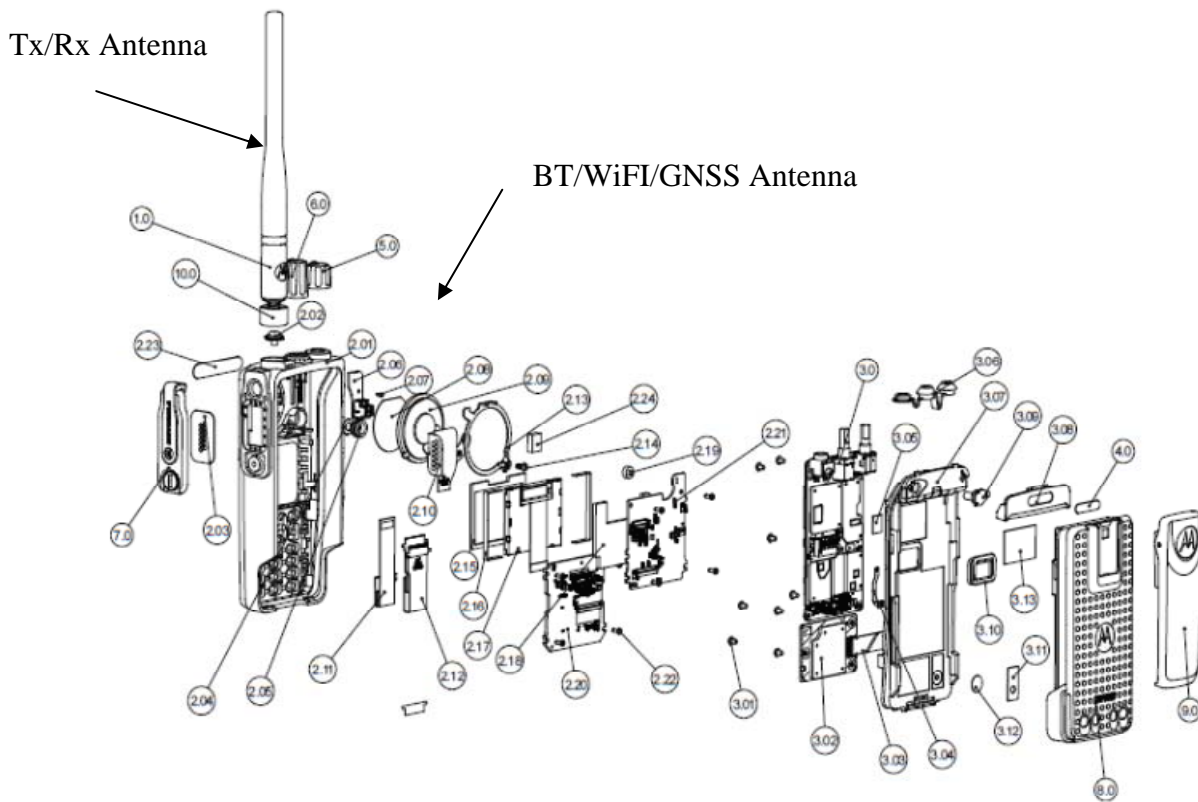
GOB board without shields (Top)

Exhibit 9M



GOB board (Bottom)

Exhibit 9N



Exploded View of FKP Radio

