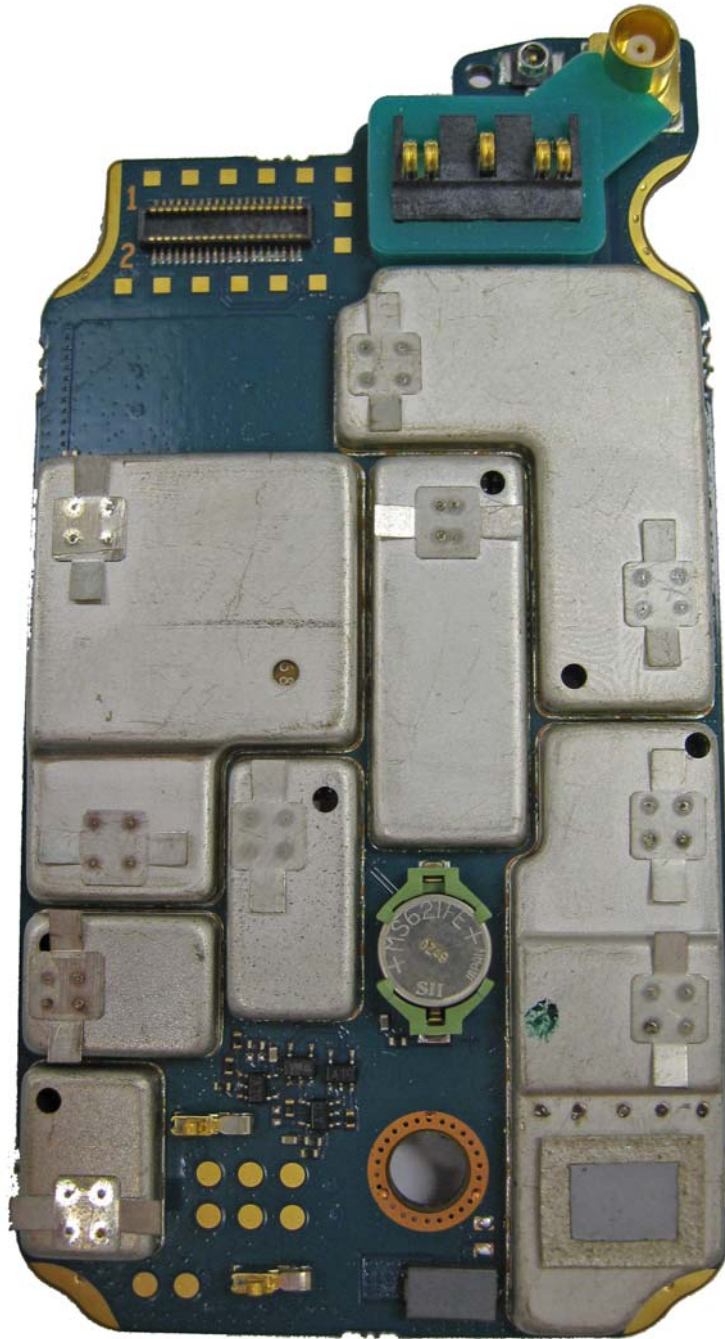


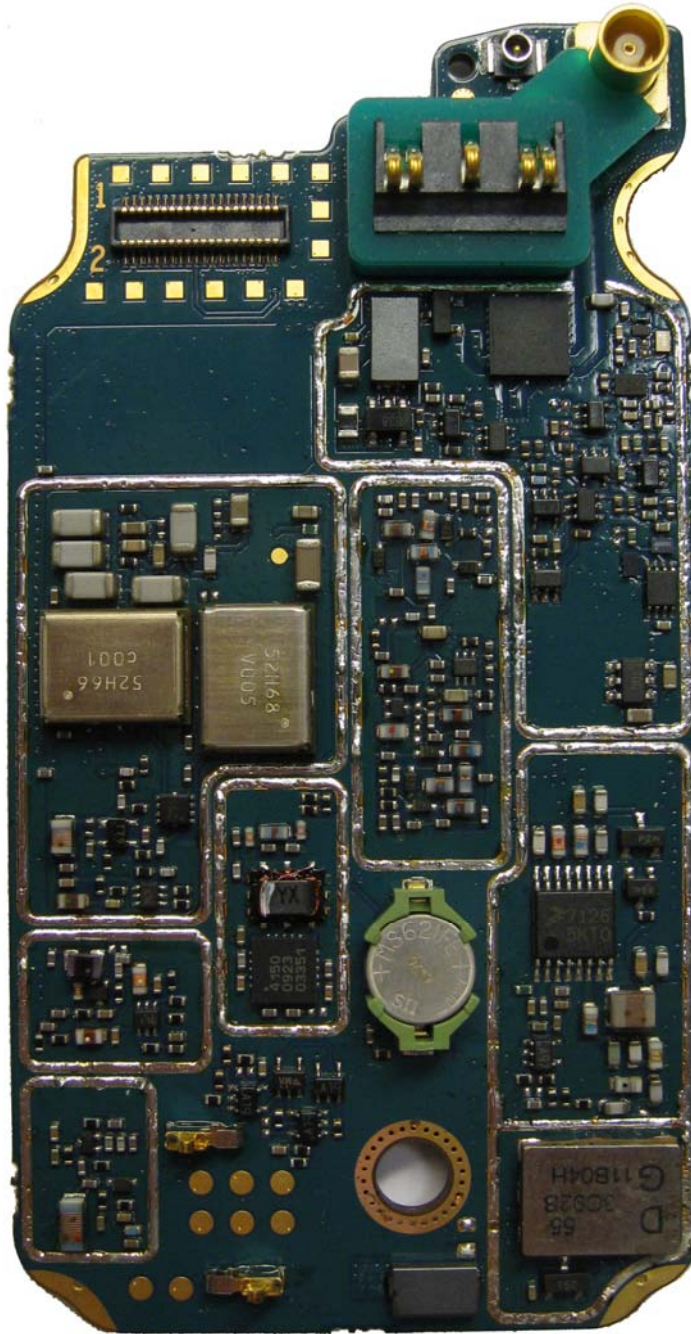
Internal Photographs

The following photographs are attached.

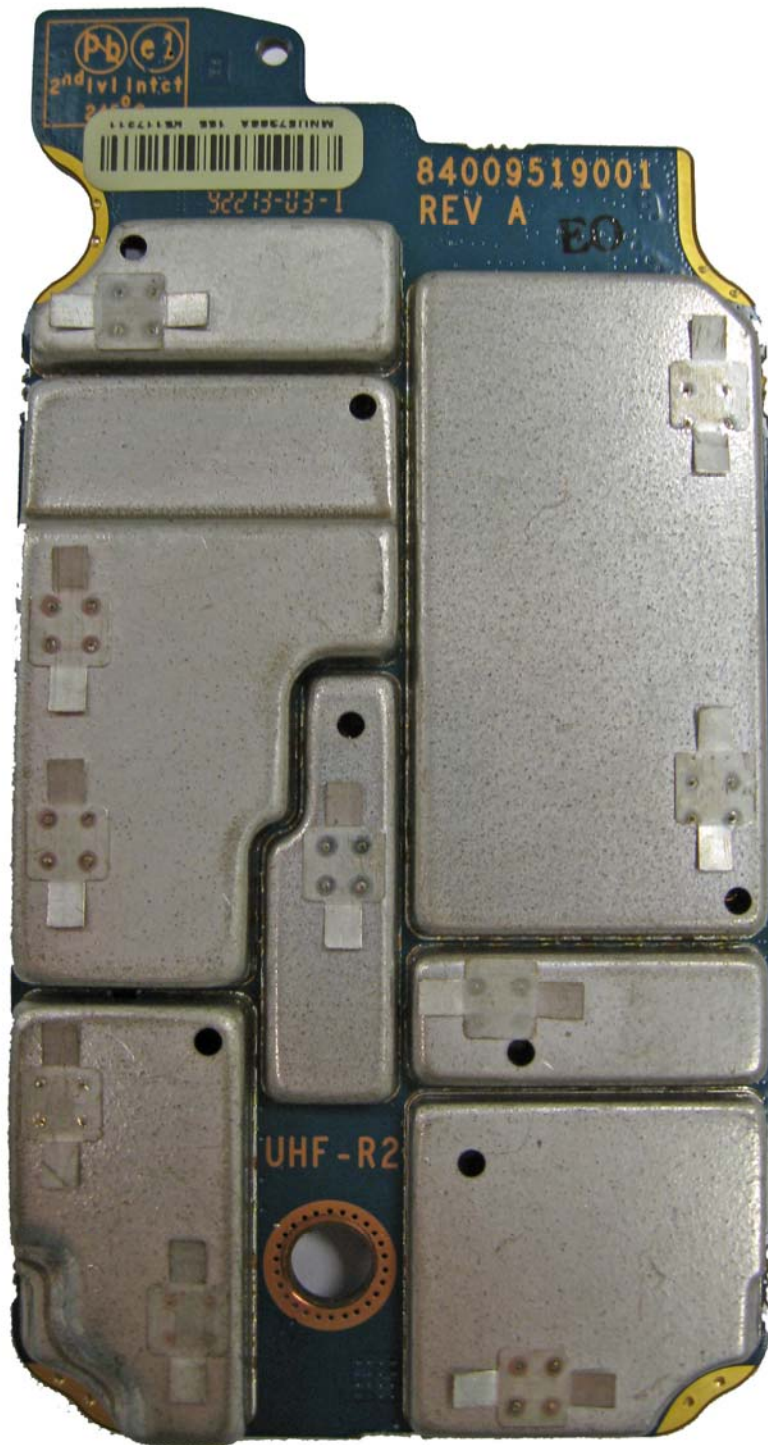
|   | <u>Exhibit</u> |
|---|----------------|
| 1. RF board <u>with</u> Shields (Top).              | 9A             |
| 2. RF board <u>without</u> Shields (Top).           | 9B             |
| 3. RF board <u>with</u> Shields (Bottom).           | 9C             |
| 4. RF board <u>without</u> Shields (Bottom).        | 9D             |
| 5. Vocon board <u>with</u> Shields (Top).           | 9E             |
| 6. Vocon board <u>without</u> Shields (Top).        | 9F             |
| 7. Vocon board <u>with</u> Shields (Bottom).        | 9G             |
| 8. Vocon board <u>without</u> Shields (Bottom).     | 9H             |
| 9. Expander board <u>with</u> Shields (Top).        | 9I             |
| 10. Expander board <u>without</u> Shields (Top).    | 9J             |
| 11. Expander board <u>with</u> Shields (Bottom).    | 9K             |
| 12. Expander board <u>without</u> Shields (Bottom). | 9L             |



RF board with Shields (Top)

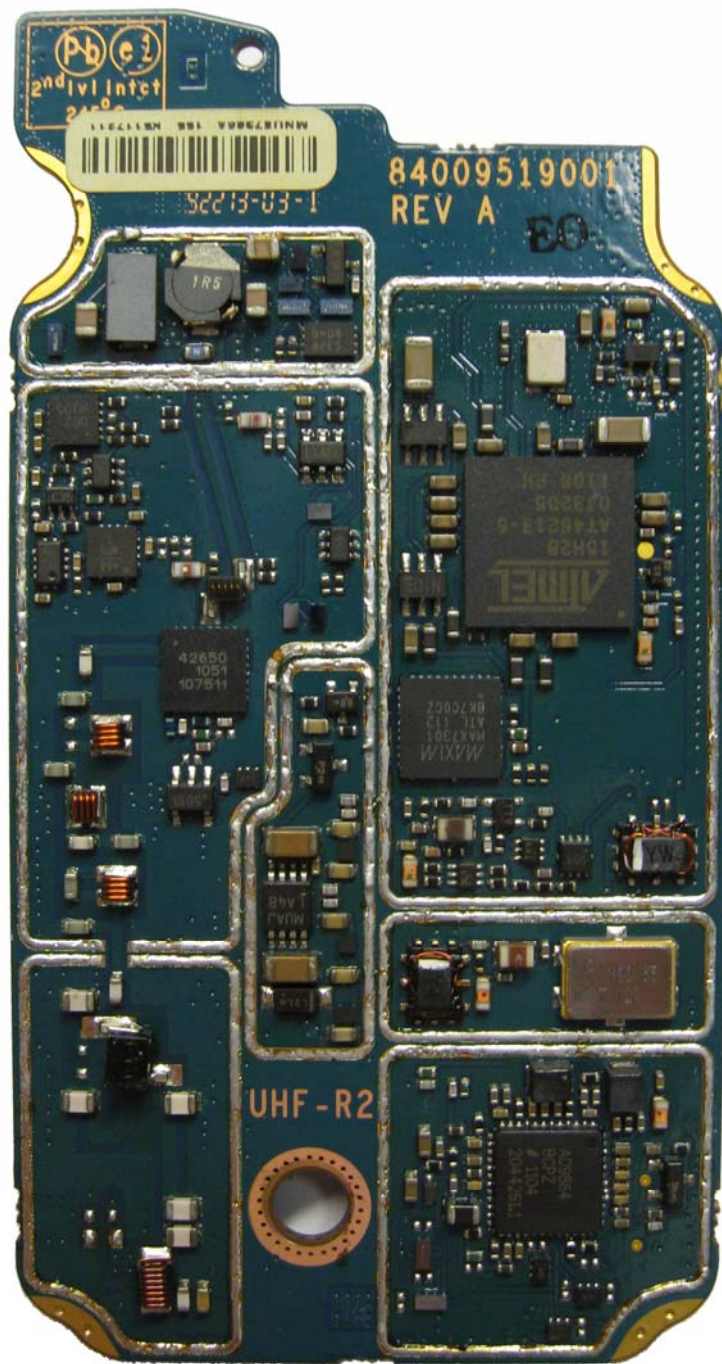


RF board without Shields (Top)



RF board with Shields (Bottom)

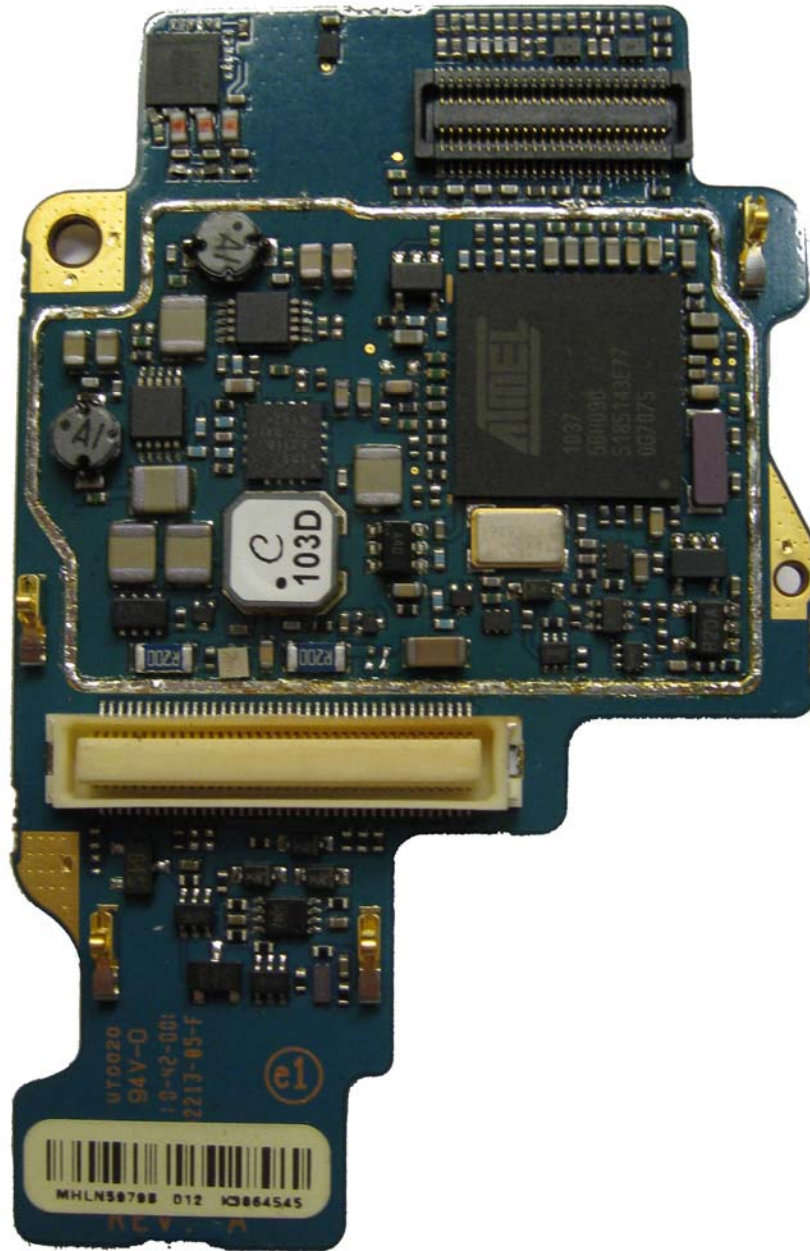




RF board without Shields (Bottom)

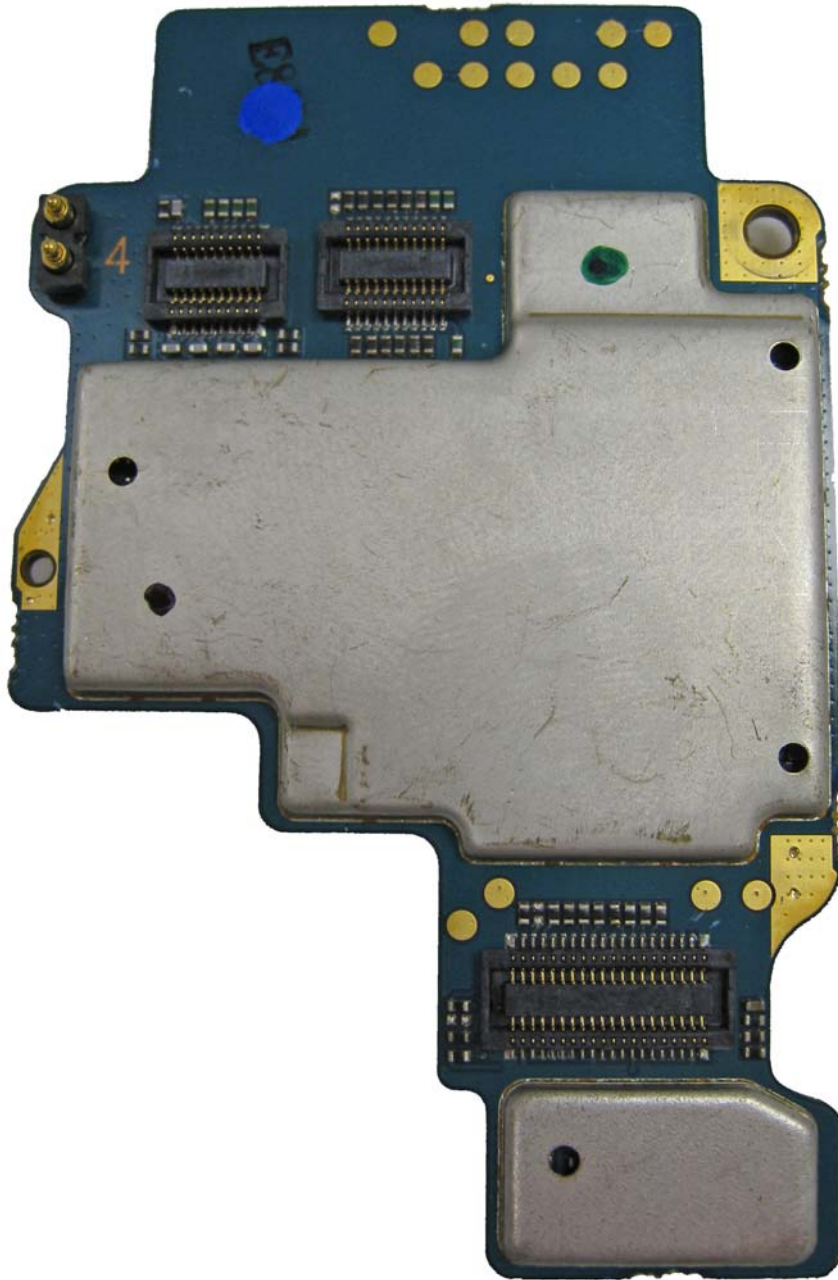


Vocon board with Shields (Top)



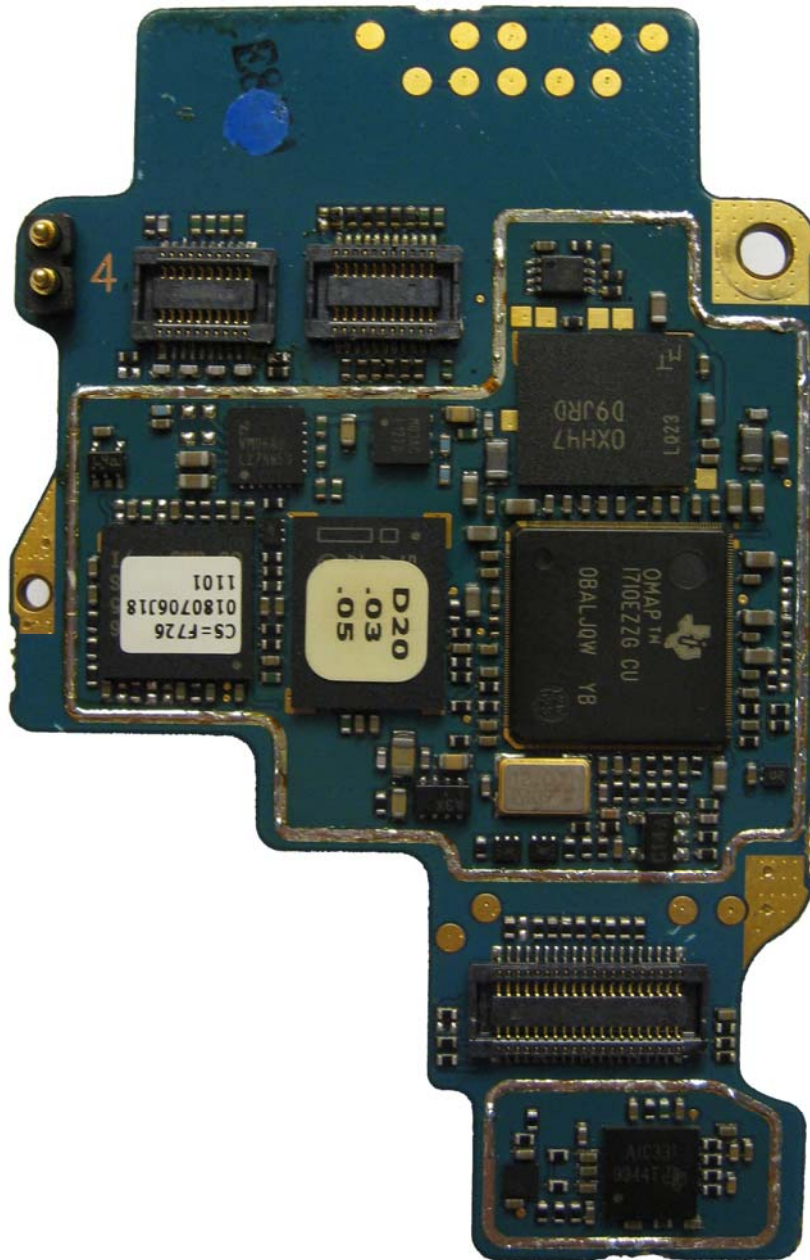
Vocon board without Shields (Top)



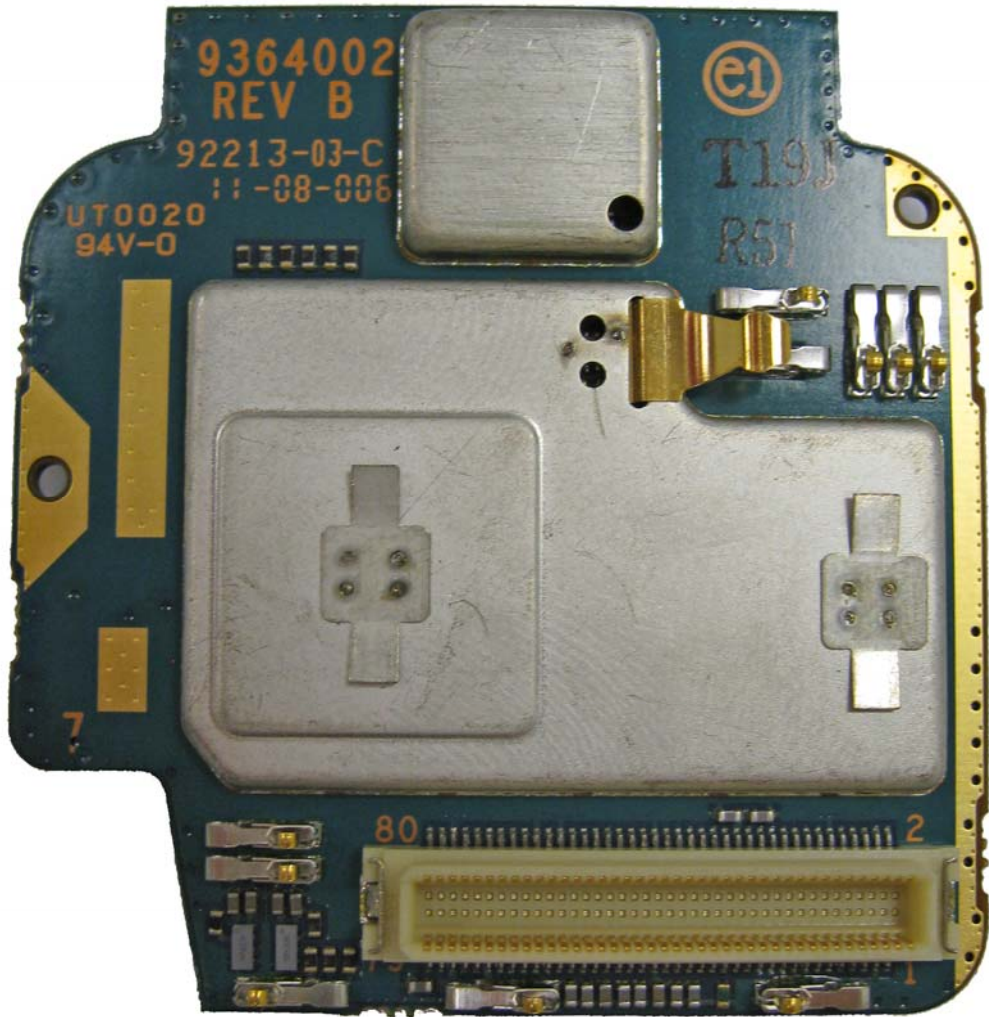


Vocon board with shields (Bottom)

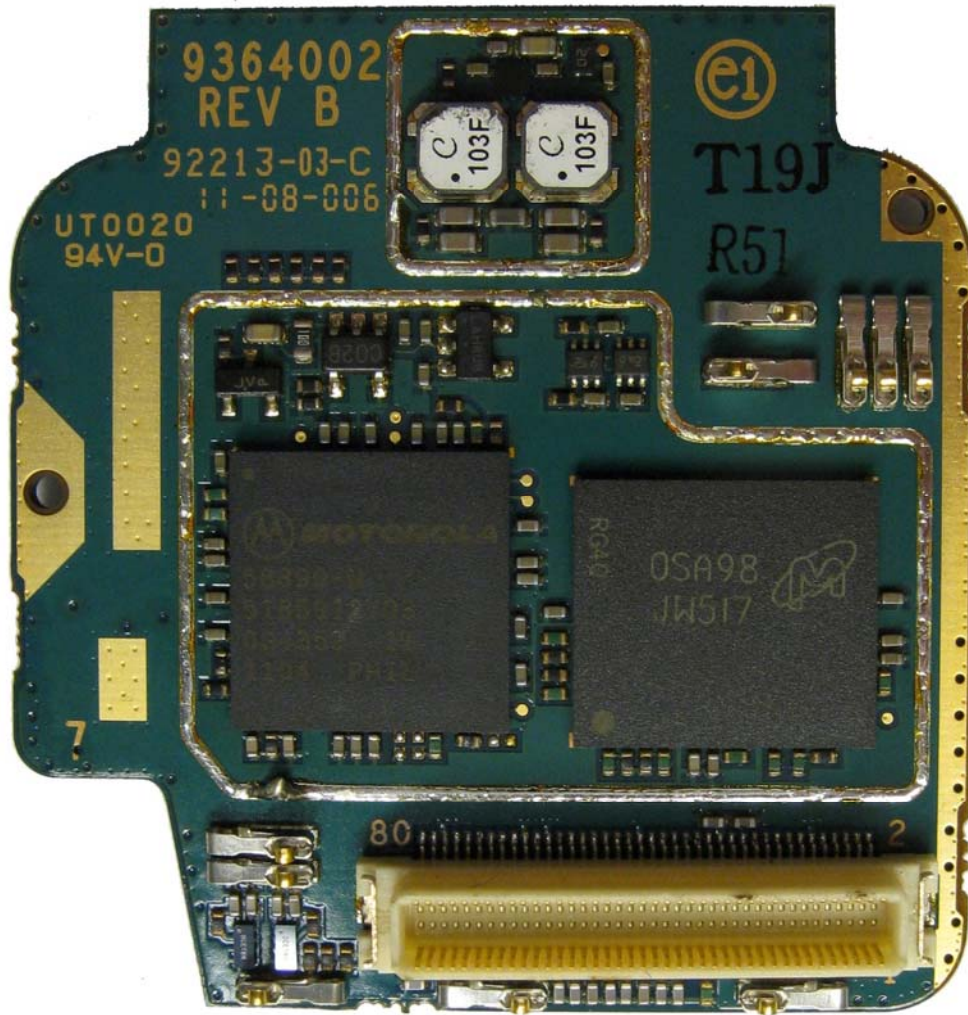




Vocon board without shields (Bottom)

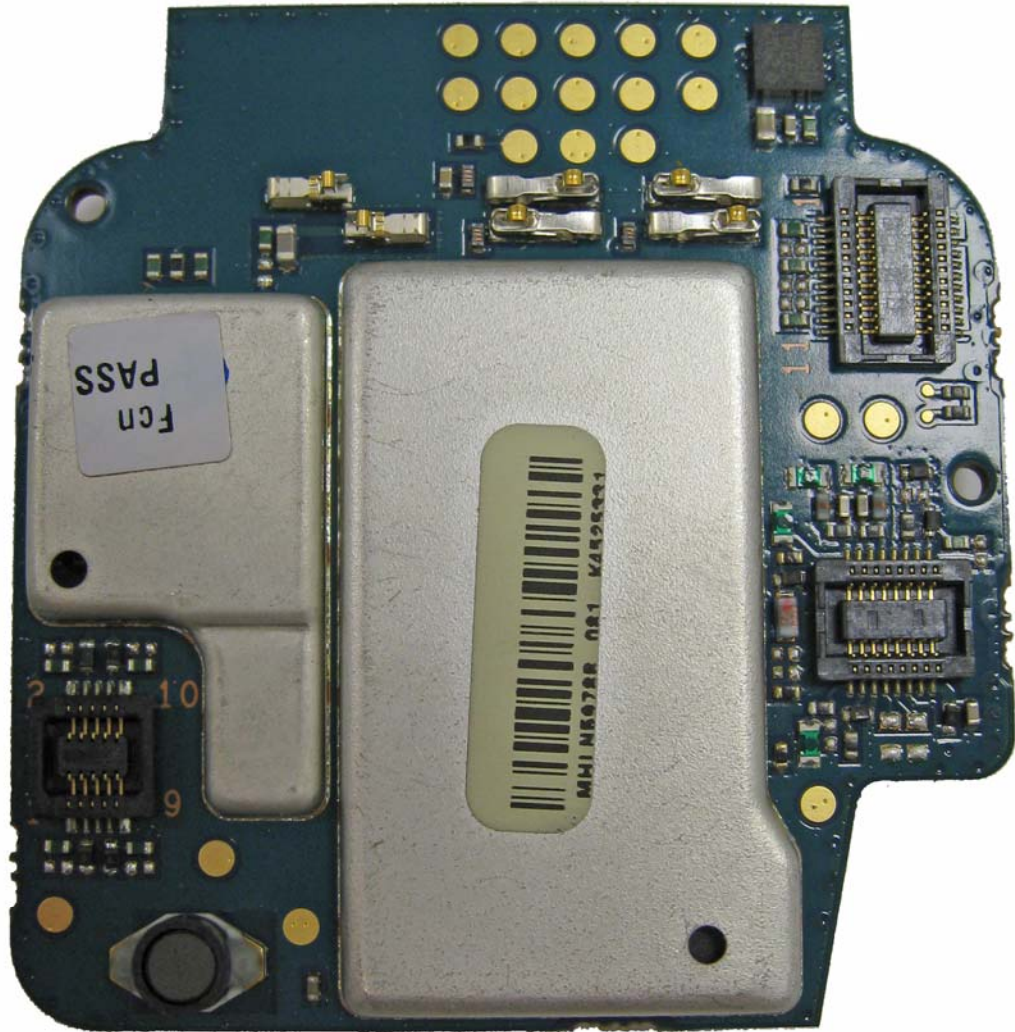


Expander board with shields (Top)



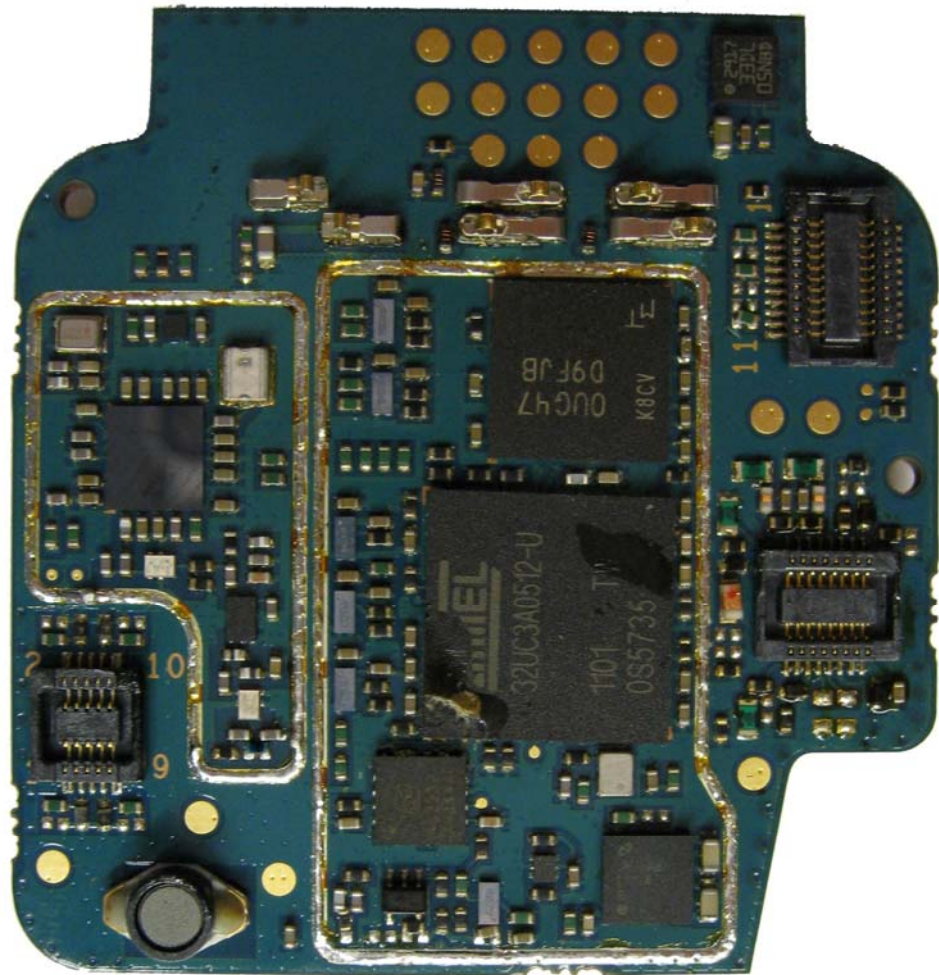
Expander board without shields (Top)





Expander board with shields (Bottom)





Expander board without shields (Bottom)