

Wireless-LAN USB Adapter Quick Install Guide

Introduction

Thank you for purchasing the Wireless-LAN USB Adapter.

Wireless-LAN USB 2.0 Adapter allows you to connect your laptop or desktop to Any Wireless-LAN networks in your home or office.

System Requirements.

Notebook or desktop PC with Pentium 1 GHz-compatible or higher Processor

.Windows 2000/XP/Vista/WIN7, MAC OS, Linux

.Available Hi-Speed USB 2.0 port

Installation

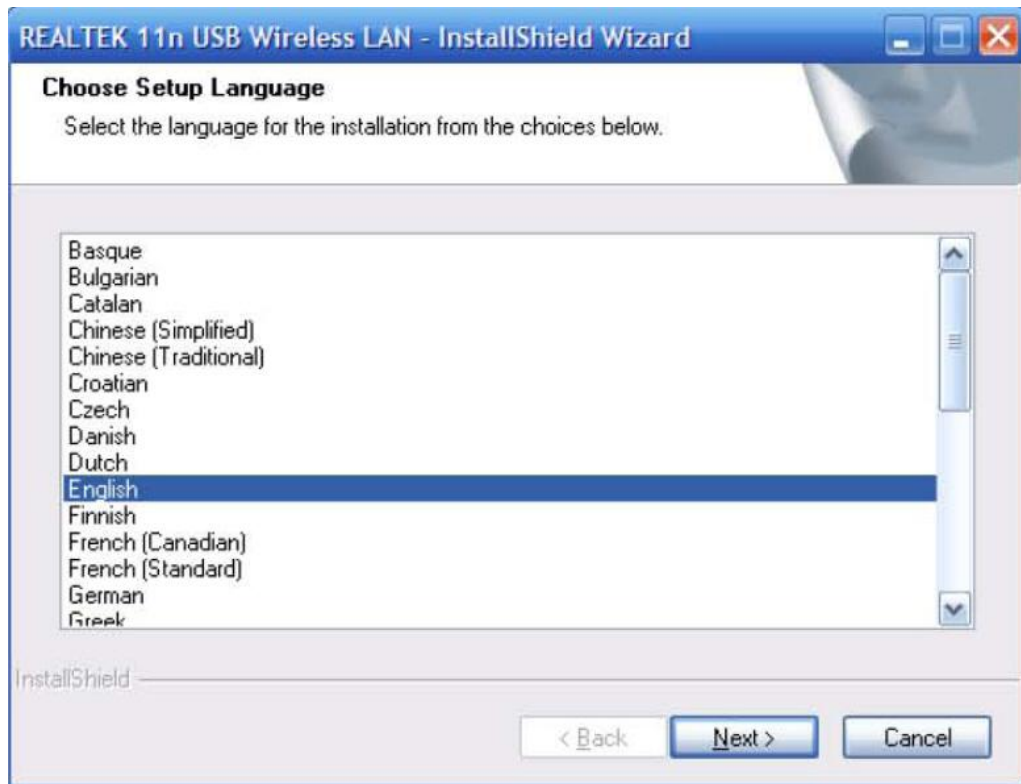
IMPORTANT: For proper operation, do not connect the Wireless-LAN USB Adapter to your computer before you install the software. If you do, wait for the Found New Hardware screen to display and click **“Cancel”**, otherwise, the installation process will likely be adversely affected.

Insert the included setup CD in the CD-ROM Drive and start the **Setup.exe** program.

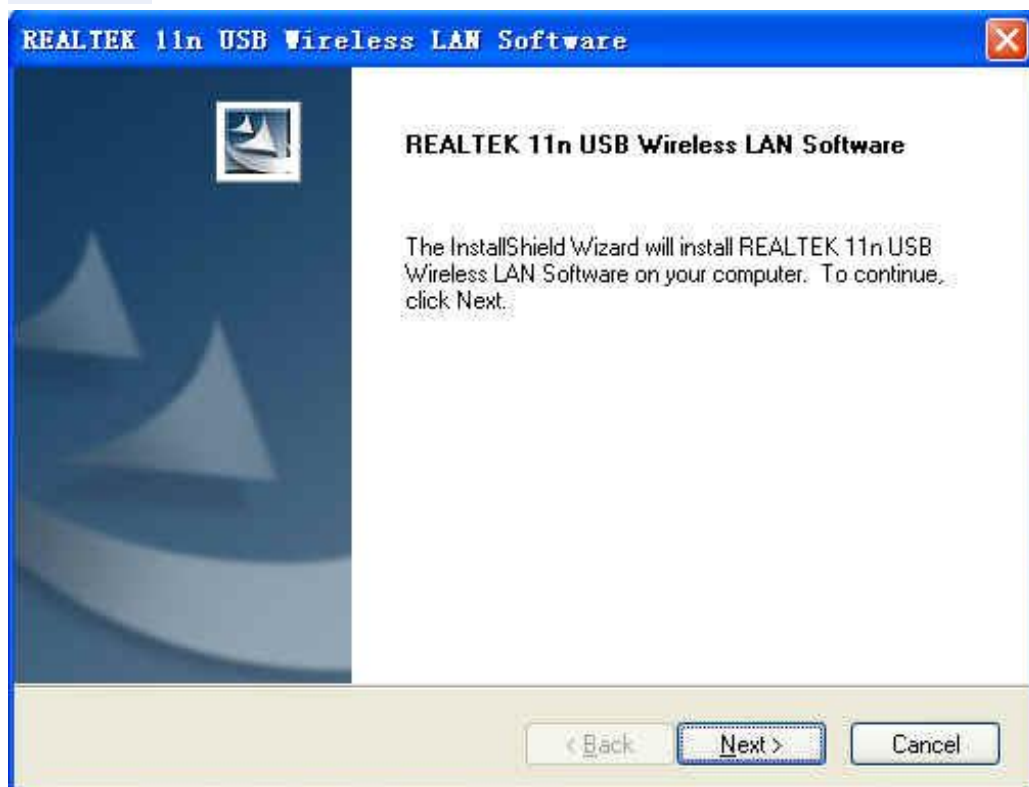
Name	Size	Type	Date Modified
DATA		File Folder	11/29/2009 9:02 PM
linux		File Folder	11/29/2009 9:02 PM
MacOS10.4_Universal_Driver...		File Folder	11/29/2009 9:02 PM
Manual		File Folder	11/29/2009 9:02 PM
Realtek_MacOS10.3_Driver1....		File Folder	11/29/2009 9:03 PM
Release notes		File Folder	11/29/2009 9:03 PM
VistaX64		File Folder	11/29/2009 9:03 PM
VistaX86		File Folder	11/29/2009 9:03 PM
Win98		File Folder	11/29/2009 9:03 PM
Win2000		File Folder	11/29/2009 9:03 PM
WinME		File Folder	11/29/2009 9:03 PM
WinXP		File Folder	11/29/2009 9:03 PM
X64		File Folder	11/29/2009 9:03 PM
_Setup.dll	365 KB	Application Extension	5/17/2006 11:21 AM
autorun.inf	1 KB	Setup Information	8/1/2007 6:18 PM
data1.cab	3,164 KB	WinRAR archive	5/18/2007 6:41 PM
data1.hdr	56 KB	HDR File	5/18/2007 6:41 PM
data2.cab	4,937 KB	WinRAR archive	5/18/2007 6:41 PM
ISSetup.dll	481 KB	Application Extension	4/5/2007 2:36 PM
layout.bin	1 KB	BIN File	5/18/2007 6:41 PM
Setup.exe	445 KB	Application	1/20/2007 3:46 AM
Setup.ini	1 KB	Configuration Settings	5/18/2007 4:37 PM
Setup.inx	263 KB	INX File	5/18/2007 6:41 PM
setup.isn	251 KB	ISN File	5/16/2006 2:44 PM
SETUP.ISS	1 KB	ISS File	12/20/2006 1:55 PM
SETUP.TXT	3 KB	Text Document	10/12/2006 11:15 AM

Wait for the installer to run

Select Language and click **“Next”** to continue with the installation



Click NEXT



The installer will automatically install the program. When done Select **Yes**, I want to restart my computer now and click **Finish** to reboot your computer.

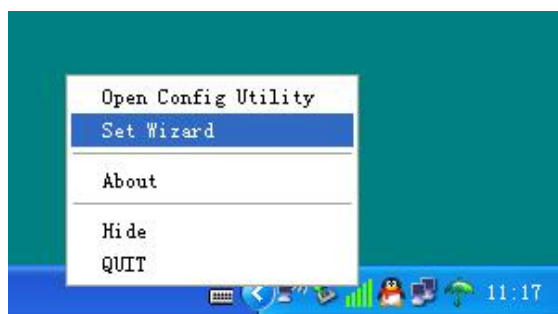


Click Finish to restart the computer after the driver installation was successful

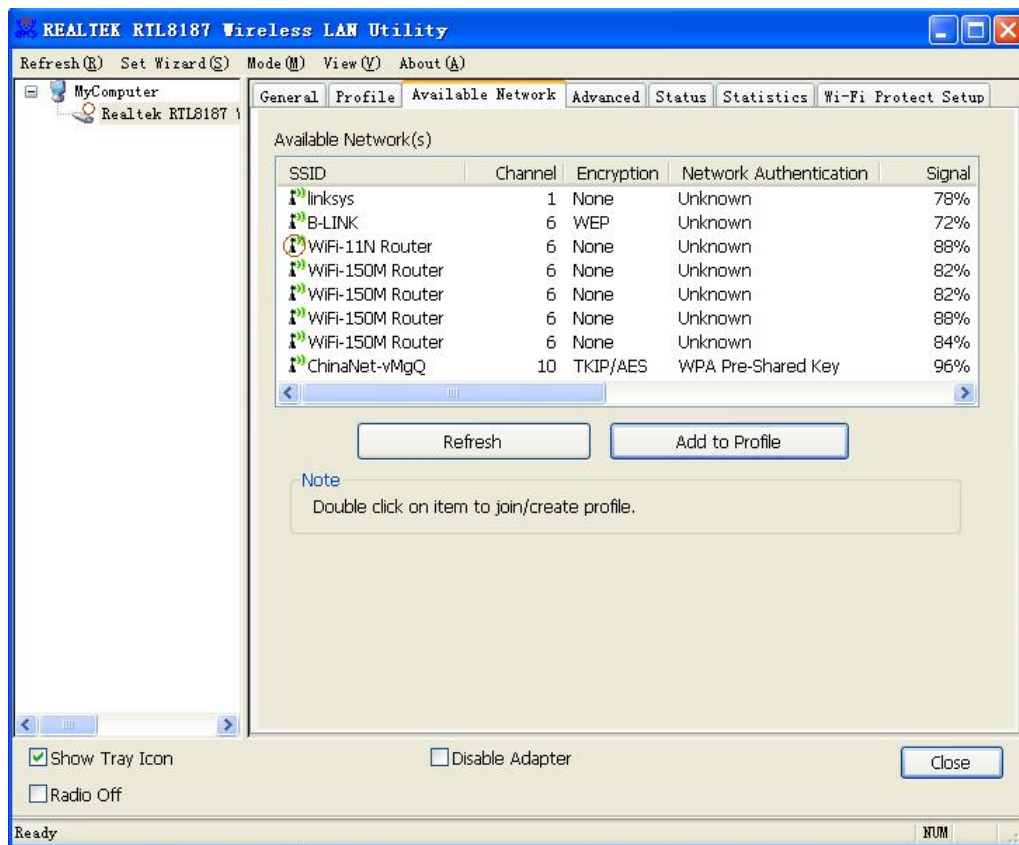
Configuration

Once the installation is complete, you can configure the Wireless-LAN USB Adapter to connect to a wireless access point(AP). The wireless configuration utility will start automatically, and you'll also find a tray icon at the lower right in your Windows systems tray.

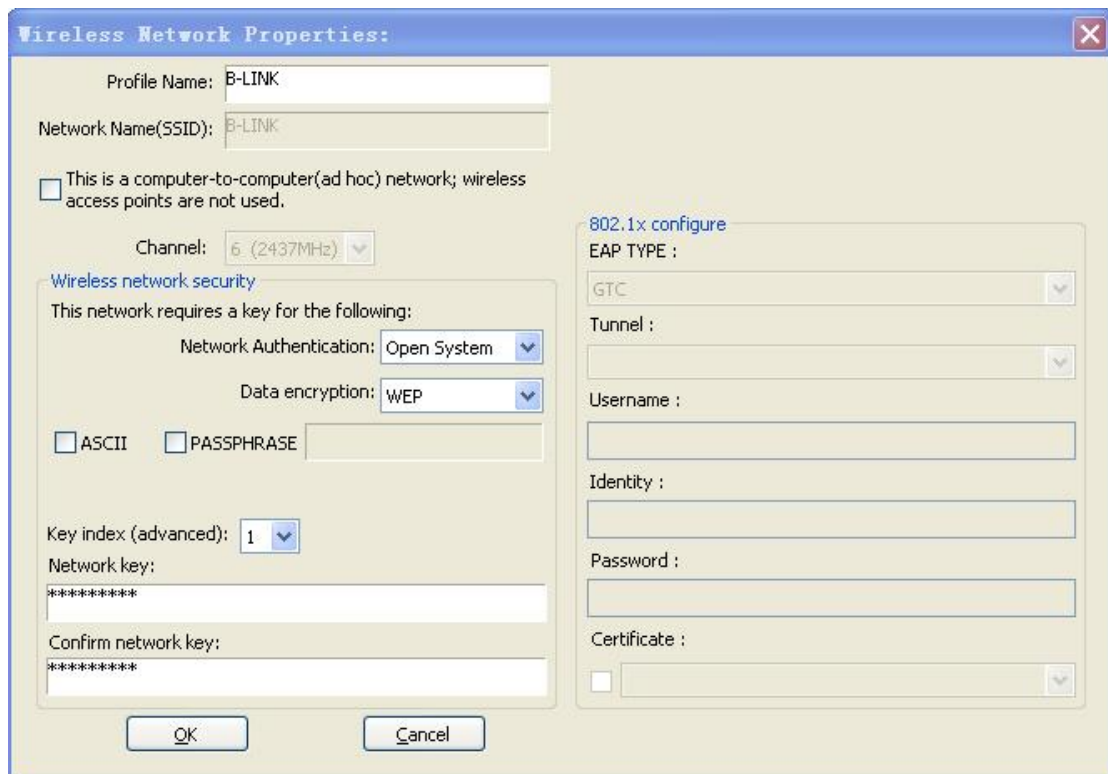
1. Right-click the Wireless tray icon and select "**Open Config Utility.**"



2. The configuration utility will scan for wireless networks within range. Click "**Refresh**" to refresh the list of available wireless networks. To join a Particular network that displays, select it and click "**Add to Profile.**"

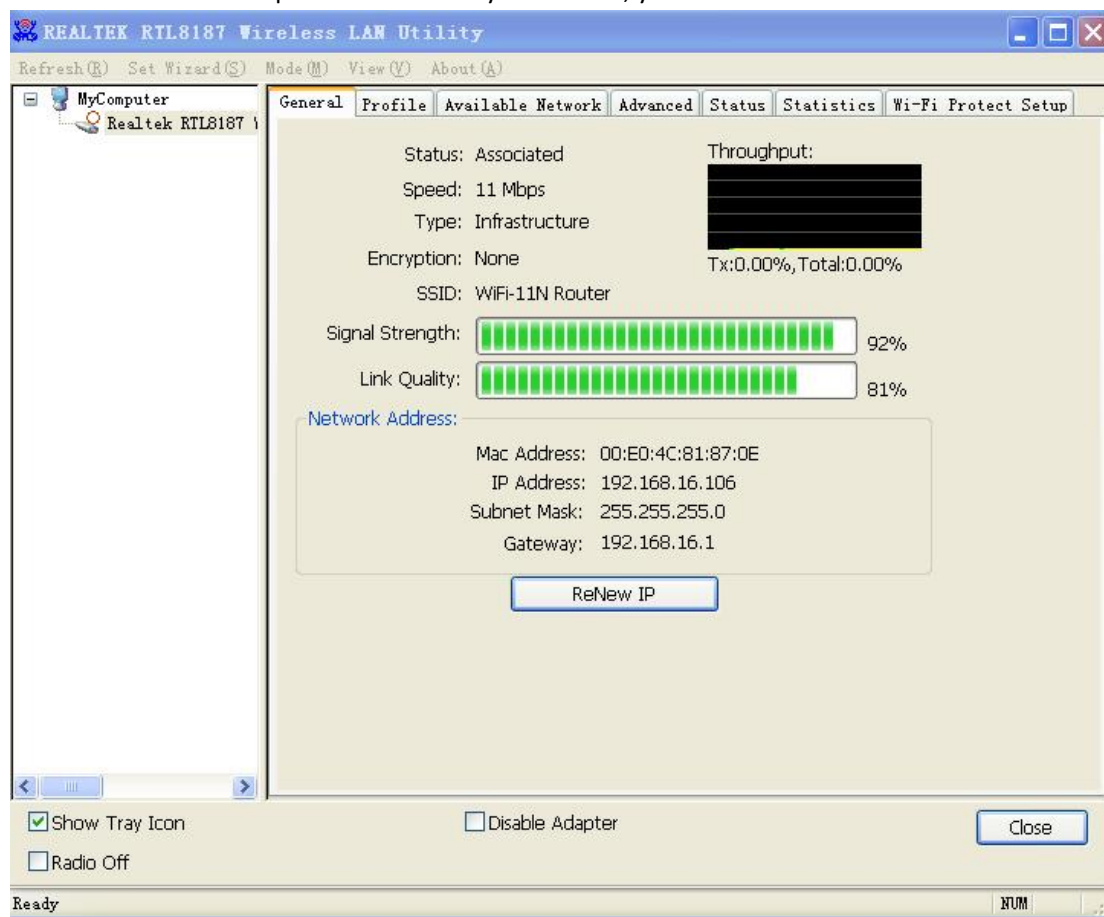


- If the wireless network uses encryption, you need to input the correct encryption key. The configuration utility automatically suggests the correct authentication type (see the drop-down list), and you should not change the suggested value.



NOTE: For WPA/WPA2 networks, you need to select the correct encryption type, as well (AES or TKIP). These settings depend on how the wireless network is set up. Only the owner of the wireless network can provide the required information.

4. If the wireless access point is successfully connected, you'll see.



NOTE: For advanced settings and additional features of the Wireless-LAN USB Adapter, refer to the user manual on the enclosed CD.

USA / FCC

Changes or modifications not expressly approved by the party responsible for compliance could void the user's authority to operate the equipment

This device complies with Part 15 of the FCC Rules.

Operation is subject to the following two conditions:

- (1) this device may not cause harmful interference, and
- (2) this device must accept any interference received, including interference that may cause undesired operation.

Note: This equipment has been tested and found to comply with the limits for a Class B digital device, pursuant to part 15 of the FCC Rules. These limits are designed to provide reasonable protection against harmful interference in a residential installation. This equipment generates, uses and can radiate radio frequency energy and, if not installed and used in accordance with the instructions, may cause harmful interference to radio communications. However, there is no guarantee that interference will not occur in a particular installation. If this equipment does cause harmful interference to radio or television reception, which can be determined by turning the equipment off and on, the user is encouraged to try to correct the interference by one or more of the following measures:

- Reorient or relocate the receiving antenna.
- Increase the separation between the equipment and receiver.
- Connect the equipment into an outlet on a circuit different from that to which the receiver is connected.
- Consult the dealer or an experienced radio/TV technician for help.

Kanada / IC

This device complies with Industry Canada licence-exempt RSS standard(s).

Operation is subject to the following two conditions:

(1) this device may not cause interference, and

(2) this device must accept any interference,

including interference that may cause undesired operation of the device.

Le présent appareil est conforme aux CNR d'Industrie Canada applicables aux appareils radio exempts de licence. L'exploitation est autorisée aux deux conditions suivantes :

(1) l'appareil ne doit pas produire de brouillage, et

(2) l'utilisateur de l'appareil doit accepter tout brouillage radioélectrique subi, même si le brouillage est susceptible d'en compromettre le fonctionnement.

This Class B digital apparatus complies with Canadian ICES-003.

Cet appareil numérique de la classe B est conforme à la norme NMB-003 du Canada.

JOY-iT® is a registered brand of JOY-IT Computer GmbH, Pascalstr. 8, 47506 Neukirchen-Vluyn, Germany

www.joy-it.net