
FCC Test Report

Report No.: AGC08F120202-2F2

FCC ID : **AYBACB-BH119A**
PRODUCT DESIGNATION : Bluetooth Mono Headset
BRAND NAME : N/A
TEST MODEL : ACB-BH119A
CLIENT : AIPO International Co., Ltd.
DATE OF ISSUE : Feb.21, 2012
STANDARD(S) : FCC Part 15 Rules

Attestation of Global Compliance Co., Ltd.

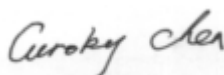
CAUTION: This report shall not be reproduced except in full without the written permission of the test laboratory and shall not be quoted out of context.


VERIFICATION OF COMPLIANCE

| | |
|---------------------|---|
| Applicant | AIPO International Co., Ltd. |
| | Floor 5, block A, NO.8 East zone, Shangxue Technology Industrial Park Bantian, Buji Town, Longgang District, ShenZhen, China |
| Manufacturer | AIPO International Co., Ltd. |
| | Floor 5, block A, NO.8 East zone, Shangxue Technology Industrial Park Bantian, Buji Town, Longgang District, ShenZhen, China |
| Product Designation | Bluetooth Mono Headset |
| Brand Name | N/A |
| Model Name | ACB-BH119A |
| FCC ID | AYBACB-BH119A |
| Report Number | AGC08F120202-2F2 |
| Date of Test | Feb.11, 2012 to Feb.21, 2012 |

WE HEREBY CERTIFY THAT:

The above equipment was tested by Attestation of Global Compliance Co., Ltd. The test data, data evaluation, test procedures, and equipment configurations shown in this report were made in accordance with the procedures given in ANSI C63.4 (2003) and the energy emitted by the sample EUT tested as described in this report is in compliance with radiated emission limits of FCC Rules Part 15.247.

Tested By: 
Curoky Chen Feb.21, 2012

Reviewed By: 
Forrest Lei Feb.21, 2012


Approved By: 
Solger Zhang Feb.21, 2012

TABLE OF CONTENTS

| | |
|--|-----------|
| 1. GENERAL INFORMATION | 4 |
| 1.1 PRODUCT DESCRIPTION | 4 |
| 1.2 TABLE OF CARRIER FREQUENCIES | 4 |
| 1.3 RECEIVER INPUT BANDWIDTH | 5 |
| 1.4 EXAMPLE OF A HOPPING SEQUENCY IN DATA MODE | 6 |
| 1.5 EQUALLY AVERAGE USE OF FREQUENCIES AND BEHAVIOUR | 6 |
| 1.6 RELATED SUBMITTAL(S) / GRANT (S) | 6 |
| 1.7 TEST METHODOLOGY | 6 |
| 1.8 MEASUREMENT UNCERTAINTY | 6 |
| 1.9 TEST FACILITY | 7 |
| 1.10 SPECIAL ACCESSORIES | 7 |
| 1.11 EQUIPMENT MODIFICATIONS | 7 |
| 2. SYSTEM TEST CONFIGURATION | 8 |
| 2.1 CONFIGURATION OF TESTED SYSTEM | 8 |
| 2.2 EQUIPMENT USED IN EUT SYSTEM | 8 |
| 3. SUMMARY OF TEST RESULTS | 9 |
| 4. DESCRIPTION OF TEST MODES | 9 |
| 5. PEAK OUTPUT POWER | 10 |
| 5.1 MEASUREMENT PROCEDURE | 10 |
| 5.2 TEST SET-UP (BLOCK DIAGRAM OF CONFIGURATION) | 10 |
| 5.3 MEASUREMENT EQUIPMENT USED | 11 |
| 5.4 LIMITS AND MEASUREMENT RESULT | 11 |
| 6. 20 DB BANDWIDTH | 12 |
| 6.1 MEASUREMENT PROCEDURE | 12 |
| 6.2 TEST SET-UP (BLOCK DIAGRAM OF CONFIGURATION) | 12 |
| 6.3 MEASUREMENT EQUIPMENT USED | 12 |
| 6.4 LIMITS AND MEASUREMENT RESULTS | 12 |
| 7. CONDUCTED SPURIOUS EMISSION | 14 |
| 7.1 MEASUREMENT PROCEDURE | 14 |
| 7.2 TEST SET-UP (BLOCK DIAGRAM OF CONFIGURATION) | 14 |
| 7.3 MEASUREMENT EQUIPMENT USED | 14 |
| 7.4 LIMITS AND MEASUREMENT RESULT | 14 |
| 8. RADIATED EMISSION | 16 |
| 8.1 MEASUREMENT PROCEDURE | 16 |
| 8.2 TEST SETUP | 17 |
| 8.3 TEST EQUIPMENT LIST | 18 |
| 8.4 TEST RESULT | 19 |
| 9. BAND EDGES EMISSION | 23 |
| 9.1 MEASUREMENT PROCEDURE | 23 |
| 9.2 TEST SET-UP | 23 |
| 9.3 TEST RESULT | 23 |
| 10. NUMBER OF HOPPING FREQUENCY | 27 |
| 10.1 MEASUREMENT PROCEDURE | 27 |
| 10.2 TEST SETUP (BLOCK DIAGRAM OF CONFIGURATION) | 27 |
| 10.3 MEASUREMENT EQUIPMENT USED | 27 |

| | |
|--|----|
| 10.4 LIMITS AND MEASUREMENT RESULT | 27 |
| 11. TIME OF OCCUPANCY (DWELL TIME)..... | 28 |
| 11.1 MEASUREMENT PROCEDURE | 28 |
| 11.2 TEST SETUP (BLOCK DIAGRAM OF CONFIGURATION) | 28 |
| 11.3 MEASUREMENT EQUIPMENT USED | 28 |
| 11.4 LIMITS AND MEASUREMENT RESULT | 28 |
| 12. FREQUENCY SEPARATION | 31 |
| 12.1 MEASUREMENT PROCEDURE | 31 |
| 12.2 TEST SETUP (BLOCK DIAGRAM OF CONFIGURATION) | 31 |
| 12.3 MEASUREMENT EQUIPMENT USED | 31 |
| 12.4 LIMITS AND MEASUREMENT RESULT | 31 |
| APPENDIX I..... | 32 |
| PHOTOGRAPHS OF THE EUT..... | 32 |
| APPENDIX II..... | 37 |
| PHOTOGRAPHS OF THE TEST SETUP | 37 |

1. GENERAL INFORMATION

1.1 PRODUCT DESCRIPTION

The EUT is a **Bluetooth Mono Headset** designed as a “Communication Device”. It is designed by way of utilizing the FHSS technology to achieve the system operation.

A major technical description of EUT is described as following:

| | |
|---------------------|-----------------------------------|
| Operation Frequency | 2.402 GHz to 2.480GHz |
| Rated Output Power | 2.84dBm(max) for GFSK modulation |
| Bluetooth Version | V3.0 with EDR |
| Modulation | GFSK, $\pi/4$ -DQPSK, 8DPSK |
| Number of channels | 79 |
| Antenna Designation | PCB Antenna |
| Antenna Gain | 0.8dBi |
| Hardware Version | BSK03-C6R |
| Software Version | BSK03-V3.0 |
| Power Supply | DC3.7V by Built-in Li-ion Battery |

****Note:** The USB port just used for charging.

1.2 TABLE OF CARRIER FREQUENCIES

| Frequency Band | Channel Number | Frequency |
|----------------|----------------|-----------|
| 2400~2483.5MHZ | 0 | 2402MHZ |
| | 1 | 2403MHZ |
| | : | : |
| | 38 | 2440 MHZ |
| | 39 | 2441 MHZ |
| | 40 | 2442 MHZ |
| | : | : |
| | 77 | 2479 MHZ |
| | 78 | 2480 MHZ |

1.3 RECEIVER INPUT BANDWIDTH

The input bandwidth of the receiver is 1.3 MHz. In every connection one Bluetooth device is the master and the other one is slave. The master determines the hopping sequence. The slave follows this sequence. Both devices shift between RX and TX time slot according to the clock of the master. Additionally the type of connection (e.g. single or multisport (packet)) is set up at the beginning of the connection. The master adapts its hopping frequency and its TX/RX timing according to the packet type of the connection. Also the slave of the connection will use these settings.

Repeating of a packet has no influence on the hopping sequence. The hopping sequence generated by the master of the connection will be followed in any case. That means, a repeated packet will not be sent on the same frequency, it is sent on the next frequency of the hopping sequence.

1.4 EXAMPLE OF A HOPPING SEQUENCY IN DATA MODE

Example of a 79 hopping sequence in data mode:
40,21,44,23,42,53,46,55,48,33,52,35,50,65,54,67
56,37,60,39,58,69,62,71,64,25,68,27,66,57,70,59
72,29,76,31,74,61,78,63,01,41,05,43,03,73,07,75
09,45,13,47,11,77,15,00,64,49,66,53,68,02,70,06
01,51,03,55,05,04

1.5 EQUALLY AVERAGE USE OF FREQUENCIES AND BEHAVIOUR

The generation of the hopping sequence in connection mode depends essentially on two input values:

1 LAP/UAP of the master of the connection

2 Internal master clock

The LAP(lower address part) are the 24 LSB's of the 48 BD_ADDRESS. The BD_ADDRESS is an unambiguous number of every Bluetooth unit. The UAP(upper address part) are the 24MSB's of the 48BD_ADDRESS

The internal clock of a Bluetooth unit is derived from a free running clock which is never adjusted and is never turned off. For synchronization with other units only offset are used. It has no relation to the time of the day. Its resolution is at least half the RX/TX slot length of 312.5us. The clock has a cycle of about One day(23h30). In most case it is implemented as 28 bit counter. For the deriving of the hopping sequence the entire.

LAP(24 bits), 4LSB's(4bits)(Input 1) and the 27MSB's of the clock(Input 2) are used. With this input values different mathematical procedures(permutations, additions, XOR-operations)are performed to generate the Sequence. This will be done at the beginning of every new transmission.

Regarding short transmissions the Bluetooth system has the following behavior:

The first connection between the two devices is established, a hopping sequence was generated. For Transmitting the wanted data the complete hopping sequence was not used. The connection ended.

The second connection will be established. A new hopping sequence is generated. Due to the fact the Bluetooth clock has a different value, because the period between the two transmission is longer(and it Cannot be shorter)than the minimum resolution of the clock(312.5us).The hopping sequence will always Differ from the first one.

1.6 RELATED SUBMITTAL(S) / GRANT (S)

This submittal(s) (test report) is intended for **FCC ID: AYBACB-BH119A** filing to comply with Section 15.247 of the FCC Part 15, Subpart C Rules.

1.7 TEST METHODOLOGY

Both conducted and radiated testing were performed according to the procedures in ANSI C63.4 (2003). Radiated testing was performed at an antenna to EUT distance 3 meters.

1.8 MEASUREMENT UNCERTAINTY

The uncertainty is calculated using the methods suggested in the "Guide to the Expression of Uncertainty in Measurement" (GUM) published by ISO.

- Uncertainty of Conducted Emission, $U_c = \pm 2.75\text{dB}$
- Uncertainty of Radiated Emission, $U_c = \pm 3.2\text{dB}$

1.9 TEST FACILITY

All measurement facilities used to collect the measurement data are located at
Attestation of Global Compliance Co., Ltd.

1F., No.2 Building, Huafeng No.1 Technical Industrial Park, Sanwei, Xixiang, Baoan District, Shenzhen
The test site is constructed and calibrated to meet the FCC requirements in documents ANSI C63.4: 2003.
FCC register No.: 259865

1.10 SPECIAL ACCESSORIES

Refer to section 2.2.

1.11 EQUIPMENT MODIFICATIONS

Not available for this EUT intended for grant.

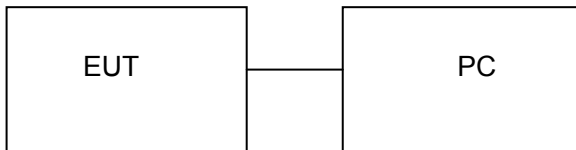
2. SYSTEM TEST CONFIGURATION

2.1 CONFIGURATION OF TESTED SYSTEM

Configure 1(Normal Hopping mode)



Configure 2 (control continuous TX through PC)



Note: All the accessories have been used during the test.

2.2 EQUIPMENT USED IN EUT SYSTEM

| Item | Equipment | Mfr/Brand | Model/Type No. | Remark |
|------|------------------------|-----------|----------------|--------|
| 1 | Bluetooth Mono Headset | N/A | ACB-BH119A | EUT |
| 2 | PC | DELL | 6DTH53X | A.E |

3. SUMMARY OF TEST RESULTS

| FCC RULES | DESCRIPTION OF TEST | RESULT |
|-----------|-----------------------------|-----------|
| §15.247 | Peak Output Power | Compliant |
| §15.247 | 20 dB Bandwidth | Compliant |
| §15.247 | Conducted Spurious Emission | Compliant |
| §15.207 | Conduction Emission | N/A |
| §15.209 | Radiated Emission | Compliant |
| §15.247 | Band Edges | Compliant |
| §15.247 | Number of Hopping Frequency | Compliant |
| §15.247 | Time of Occupancy | Compliant |
| §15.247 | Frequency Separation | Compliant |

****Note:** The Bluetooth function will reset when charging.

4. DESCRIPTION OF TEST MODES

The EUT has been operated in three modulations: GFSK, $\pi/4$ -DQPSK, 8-DPSK independently. The following operating modes were applied for the related test items. All 3axis have been tested.

| No. | TEST MODES |
|-----|--------------------|
| 1 | Low Channel(TX) |
| 2 | Middle Channel(TX) |
| 3 | High Channel(TX) |
| 4 | Normal Hopping |

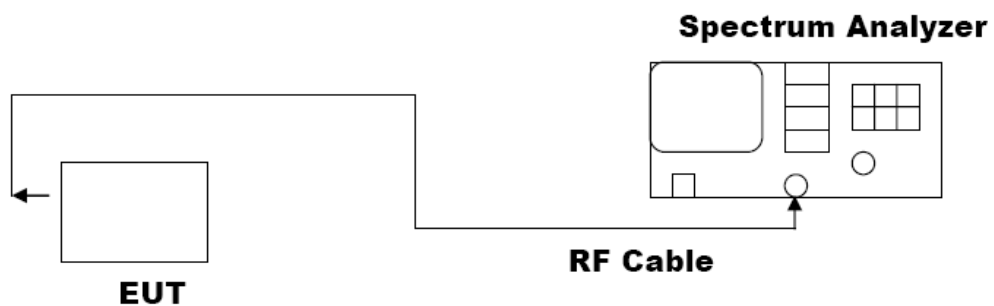
****Note:** All the test modes can be supply by Built-in Li-ion battery, and the battery is full filled, only the result of the worst case was recorded in the report.

5. PEAK OUTPUT POWER

5.1 MEASUREMENT PROCEDURE

1. The EUT was placed on a turn table which is 0.8m above ground plane.
2. Connect EUT RF output port to the Spectrum Analyzer.
3. Set the EUT Work on the top, the middle and the bottom operation frequency individually.
4. Set Span = approximately 5 times the 20 dB bandwidth, centered on a hopping channel
RBW > the 20 dB bandwidth of the emission being measured
VBW \geq RBW; Sweep = auto; Detector function = peak.
5. Set SPA Trace 1 Max hold, then View.

5.2 TEST SET-UP (BLOCK DIAGRAM OF CONFIGURATION)



5.3 MEASUREMENT EQUIPMENT USED

| Description | Manufacturer | Model | SERIAL NUMBER | Cal. Date | Cal. Due |
|-------------------|--------------|--------|---------------|------------|------------|
| Spectrum Analyzer | Agilent | E4440A | N/A | 06/27/2011 | 06/26/2012 |

5.4 LIMITS AND MEASUREMENT RESULT

| PEAK OUTPUT POWER MEASUREMENT RESULT FOR GFSK MODULATION | | | |
|--|--------------|-------------------------|--------------|
| Frequency (GHz) | Result (dBm) | Applicable Limits (dBm) | Pass or Fail |
| 2.402 | 2.84 | 30 | Pass |
| 2.441 | 2.77 | 30 | Pass |
| 2.480 | 2.71 | 30 | Pass |

| PEAK OUTPUT POWER MEASUREMENT RESULT FOR $\pi/4$ -DQPSK, 8DPSK MODULATION | | | | |
|---|--------------------------|--------------------------|-------------------------|--------------|
| Frequency (GHz) | Test Result 2 Mbps (dBm) | Test Result 3 Mbps (dBm) | Applicable Limits (dBm) | Pass or Fail |
| 2.402 | 2.79 | 2.75 | 30 | Pass |
| 2.441 | 2.73 | 2.70 | 30 | Pass |
| 2.480 | 2.69 | 2.65 | 30 | Pass |

6. 20 dB BANDWIDTH

6.1 MEASUREMENT PROCEDURE

1. The EUT was placed on a turn table which is 0.8m above ground plane.
2. Connect EUT RF output port to the Spectrum Analyzer through an RF attenuator
3. Set the EUT Work on the top, the middle and the bottom operation frequency individually.
4. Set Span = approximately 2 to 3 times the 20 dB bandwidth, centered on a hopping channel
RBW \geq 1% of the 20 dB bandwidth, VBW \geq RBW; Sweep = auto; Detector function = peak
5. Set SPA Trace 1 Max hold, then View.

6.2 TEST SET-UP (BLOCK DIAGRAM OF CONFIGURATION)

The same as described in Section 5.2

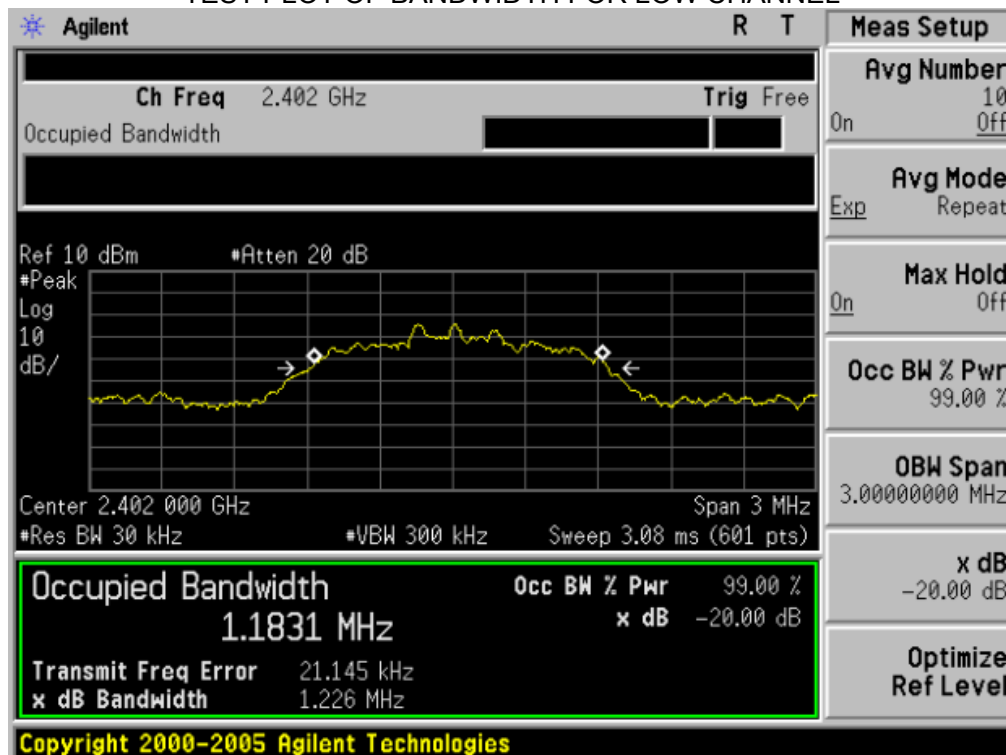
6.3 MEASUREMENT EQUIPMENT USED

The same as described in Section 5.3

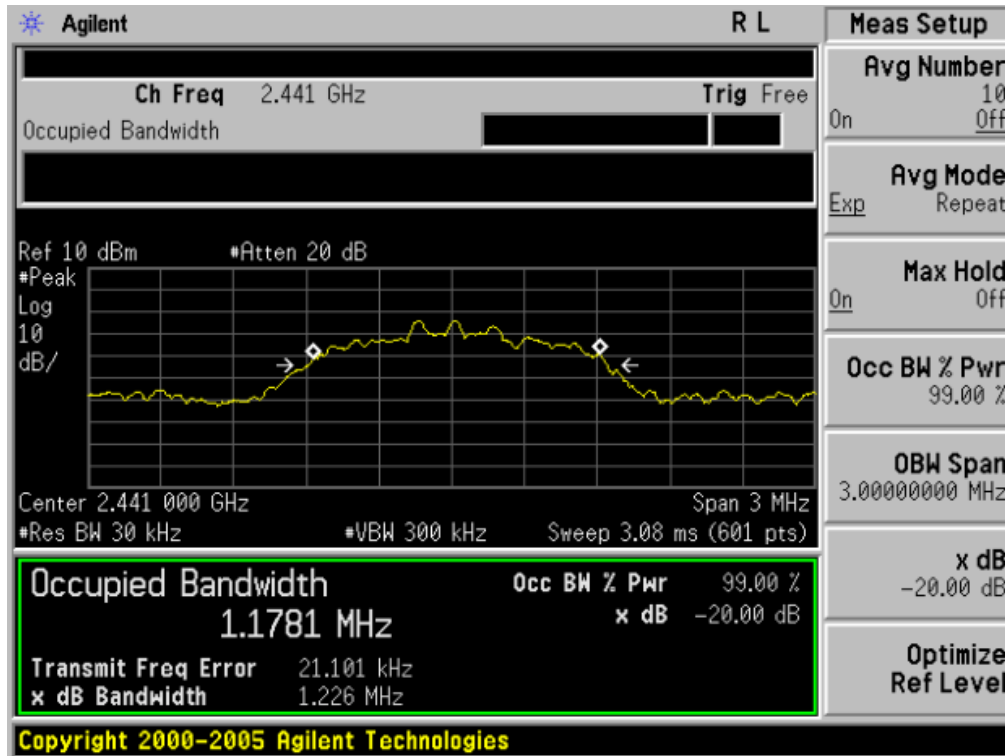
6.4 LIMITS AND MEASUREMENT RESULTS

| THE MEASUREMENT RESULT WITH THE WORST CASE OF 3MBPS FOR 8-DPSK MODULATION | | | |
|---|--------------------|-------|----------|
| Applicable Limits | Measurement Result | | |
| | Test Data (MHz) | | Criteria |
| -- | Low Channel | 1.226 | PASS |
| | Middle Channel | 1.226 | PASS |
| | High Channel | 1.222 | PASS |

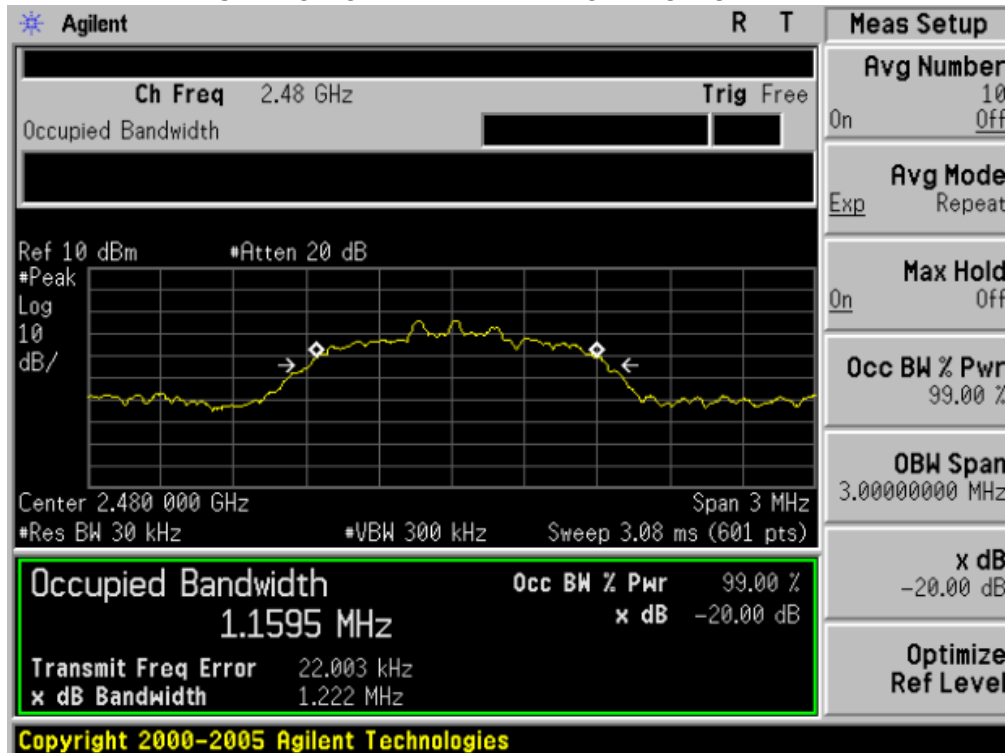
TEST PLOT OF BANDWIDTH FOR LOW CHANNEL



TEST PLOT OF BANDWIDTH FOR MIDDLE CHANNEL



TEST PLOT OF BANDWIDTH FOR HIGH CHANNEL



7. CONDUCTED SPURIOUS EMISSION

7.1 MEASUREMENT PROCEDURE

1. The EUT was placed on a turn table which is 0.8m above ground plane.
2. Connect EUT RF output port to the Spectrum Analyzer through an RF attenuator
3. Set the EUT Work on the top, the middle and the bottom operation frequency individually.
4. Set the Span = wide enough to capture the peak level of the in-band emission and all spurious emissions from the lowest frequency generated in the EUT up through the 10th harmonic.
RBW = 100 kHz; VBW \geq RBW; Sweep = auto; Detector function = peak.
5. Set SPA Trace 1 Max hold, then View.

7.2 TEST SET-UP (BLOCK DIAGRAM OF CONFIGURATION)

The same as described in section 5.2

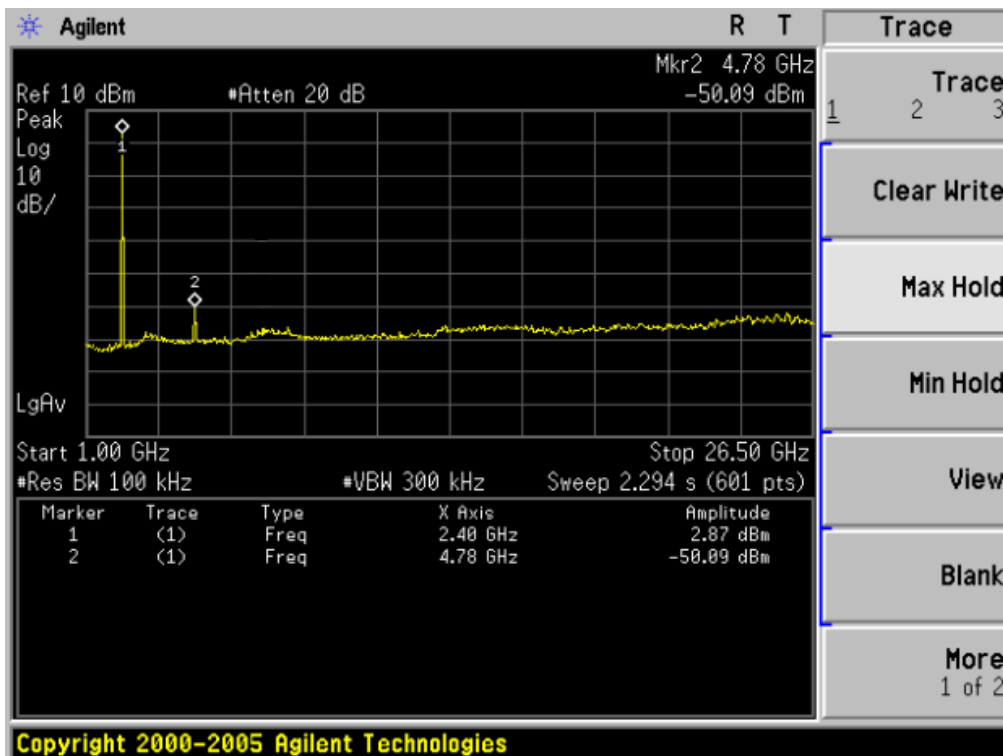
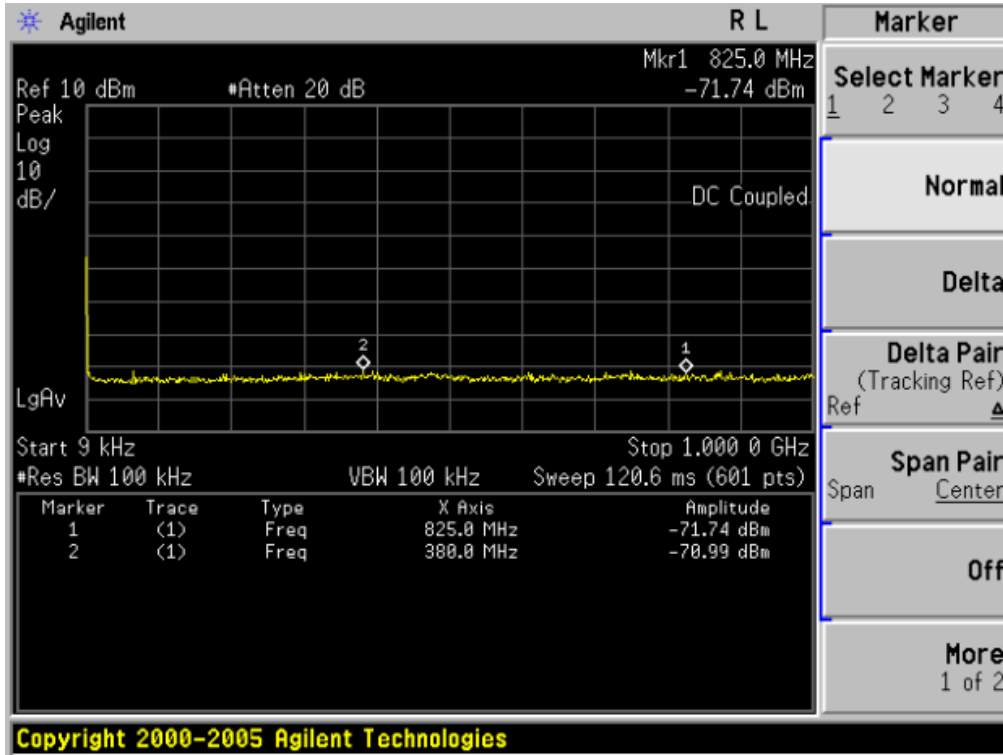
7.3 MEASUREMENT EQUIPMENT USED

The same as described in section 5.3

7.4 LIMITS AND MEASUREMENT RESULT

| LIMITS AND MEASUREMENT RESULT | | |
|--|--|----------|
| Applicable Limits | Measurement Result | |
| | Test Data | Criteria |
| In any 100 KHz Bandwidth Outside the frequency band in which the spread spectrum intentional radiator is operating, the radio frequency power that is produce by the intentional radiator shall be at least 20 dB below that in 100KHz bandwidth within the band that contains the highest level of the desired power. | At least -20dBc than the limit Specified on the BOTTOM Channel | PASS |
| In addition, radiation emissions which fall in the restricted bands, as defined in §15.205(a), must also comply with the radiated emission limits specified in§15.209(a)) | At least -20dBc than the limit Specified on the TOP Channel | PASS |

TEST PLOT OF OUT OF BAND EMISSIONS WITH THE WORST CASE
 OF 1 MBPS FOR GFSK MODULATION IN LOW CHANNEL



8. RADIATED EMISSION

8.1 MEASUREMENT PROCEDURE

1. Configure the EUT according to ANSI C63.4. The EUT was placed on the top of the turntable 0.8 meter above ground. The phase center of the receiving antenna mounted on the top of a height-variable antenna tower was placed 3 meters far away from the turntable.
2. Power on the EUT and all the supporting units. The turntable was rotated by 360 degrees to determine the position of the highest radiation.
3. The height of the broadband receiving antenna was varied between one meter and four meters above ground to find the maximum emissions field strength of both horizontal and vertical polarization.
4. For each suspected emissions, the antenna tower was scan (from 1 M to 4 M) and then the turntable was rotated (from 0 degree to 360 degrees) to find the maximum reading.
5. Set the test-receiver system to Peak or CISPR quasi-peak Detect Function with specified bandwidth under Maximum Hold Mode.
6. For emissions above 1GHz, use 1MHz VBW and RBW for peak reading. Then 1MHz RBW and 10Hz VBW for average reading in spectrum analyzer.
7. When the radiated emissions limits are expressed in terms of the average value of the emissions, and pulsed operation is employed, the measurement field strength shall be determined by averaging over one complete pulse train, including blanking intervals, as long as the pulse train does not exceed 0.1 seconds. As an alternative (provided the transmitter operates for longer than 0.1 seconds) or in cases where the pulse train exceeds 0.1 seconds, the measured field strength shall be determined from the average absolute voltage during a 0.1 second interval during which the field strength is at its maximum value.
8. If the emissions level of the EUT in peak mode was 3 dB lower than the average limit specified, then testing will be stopped and peak values of EUT will be reported, otherwise, the emissions which do not have 3 dB margin will be repeated one by one using the quasi-peak method for below 1GHz.
9. For testing above 1GHz, the emissions level of the EUT in peak mode was lower than average limit (that means the emissions level in peak mode also complies with the limit in average mode), then testing will be stopped and peak values of EUT will be reported, otherwise, the emissions will be measured in average mode again and reported.
10. In case the emission is lower than 30MHz, loop antenna has to be used for measurement and the recorded data should be QP measured by receiver. High – Low scan is not required in this case.

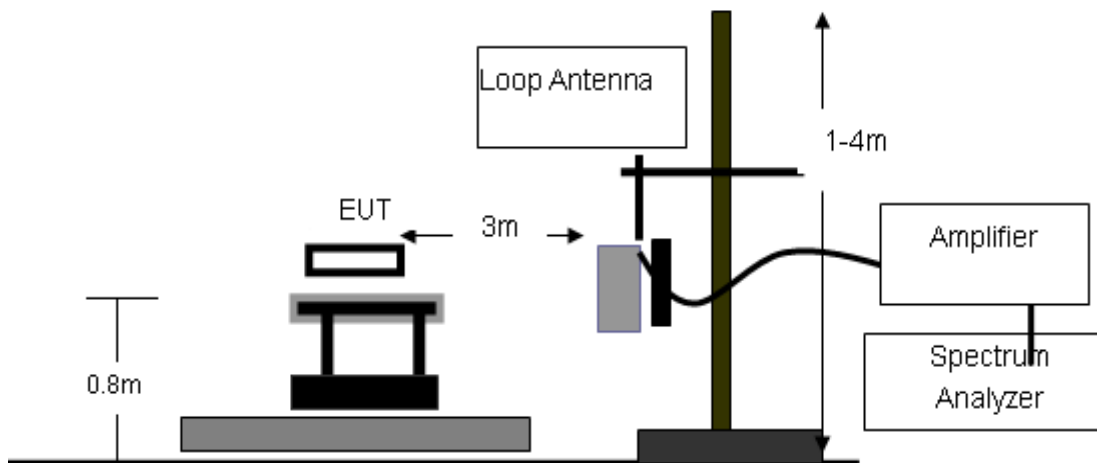
The following table is the setting of spectrum analyzer and receiver.'

| Spectrum Parameter | Setting |
|--|---|
| Start Frequency | 1GHz |
| Stop Frequency | 26.5GHz |
| RB/VB(Emission in restricted band) | 1MHz/1MHz for Peak, 1MHz/10Hz for Average |
| RB/VB(Emission in non-restricted band) | 1MHz/1MHz for Peak |

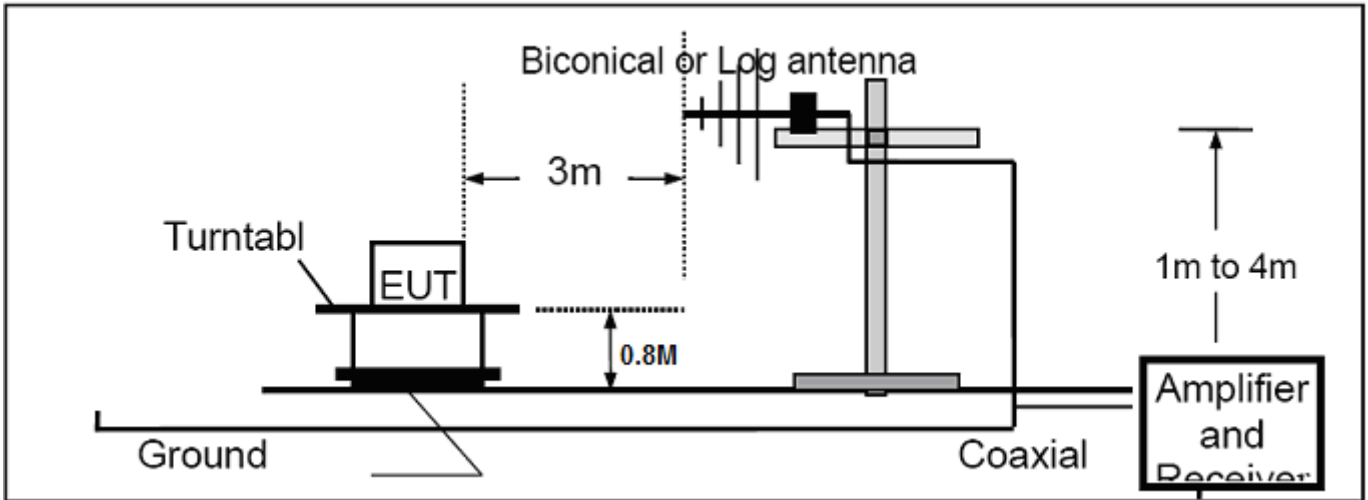
| Receiver Parameter | Setting |
|-----------------------|--------------------------------|
| Start ~Stop Frequency | 9KHz~150KHz/RB 200Hz for QP |
| Start ~Stop Frequency | 150KHz~30MHz/RB 9KHz for QP |
| Start ~Stop Frequency | 30MHz~1000MHz/RB 120KHz for QP |

8.2 TEST SETUP

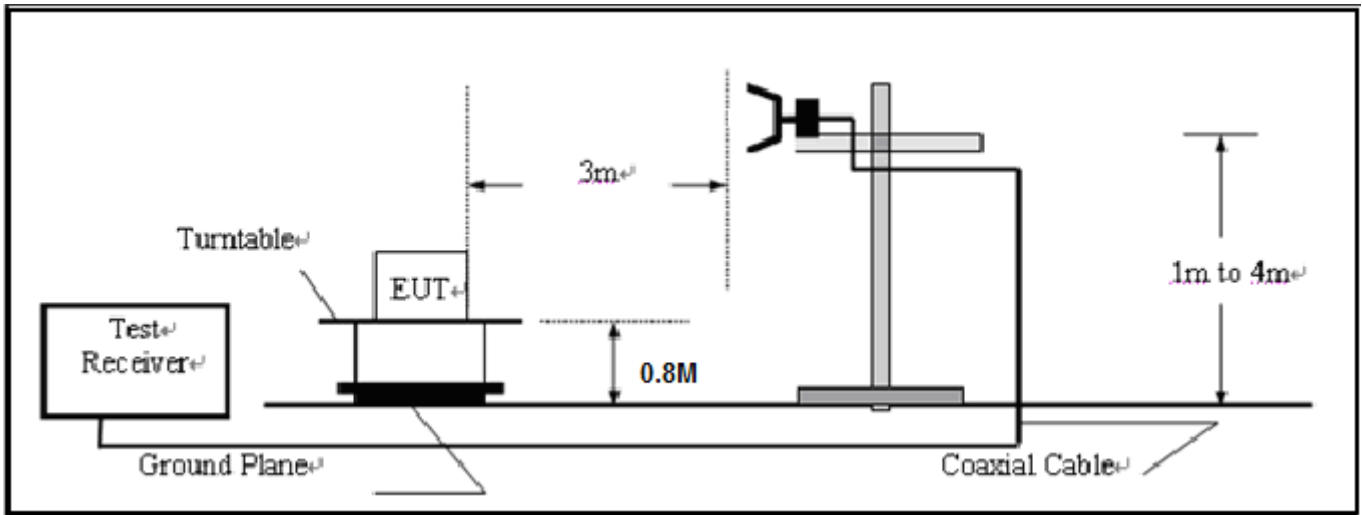
RADIATED EMISSION TEST SETUP BELOW 30MHz



RADIATED EMISSION TEST SETUP 30MHz-1000MHz



RADIATED EMISSION TEST SETUP ABOVE 1000MHz



8.3 TEST EQUIPMENT LIST

| Description | Manufacturer | Model | SERIAL NUMBER | Cal. Date | Cal. Due |
|-----------------------|-------------------|-------------|---------------|------------|------------|
| Spectrum Analyzer | Agilent | E4440A | N/A | 06/27/2011 | 06/26/2012 |
| Amplifier | EM | EM30180 | 0607030 | 06/27/2011 | 06/26/2012 |
| Horn Antenna | EM | EM-AH-10180 | N/A | 06/27/2011 | 06/26/2012 |
| EMI Test Receiver | Rohde & Schwarz | ESCI | N/A | 06/27/2011 | 06/26/2012 |
| Amplifier | EM | EM30180 | N/A | 06/27/2011 | 06/26/2012 |
| Biological Antenna | A.H. Systems Inc. | SAS-521-4 | N/A | 06/27/2011 | 06/26/2012 |
| Loop Antenna | Daze | ZN30900N | SEL0097 | 06/27/2011 | 06/26/2012 |
| Isolation Transformer | LETEAC | LTBK | -- | 06/27/2011 | 06/26/2012 |

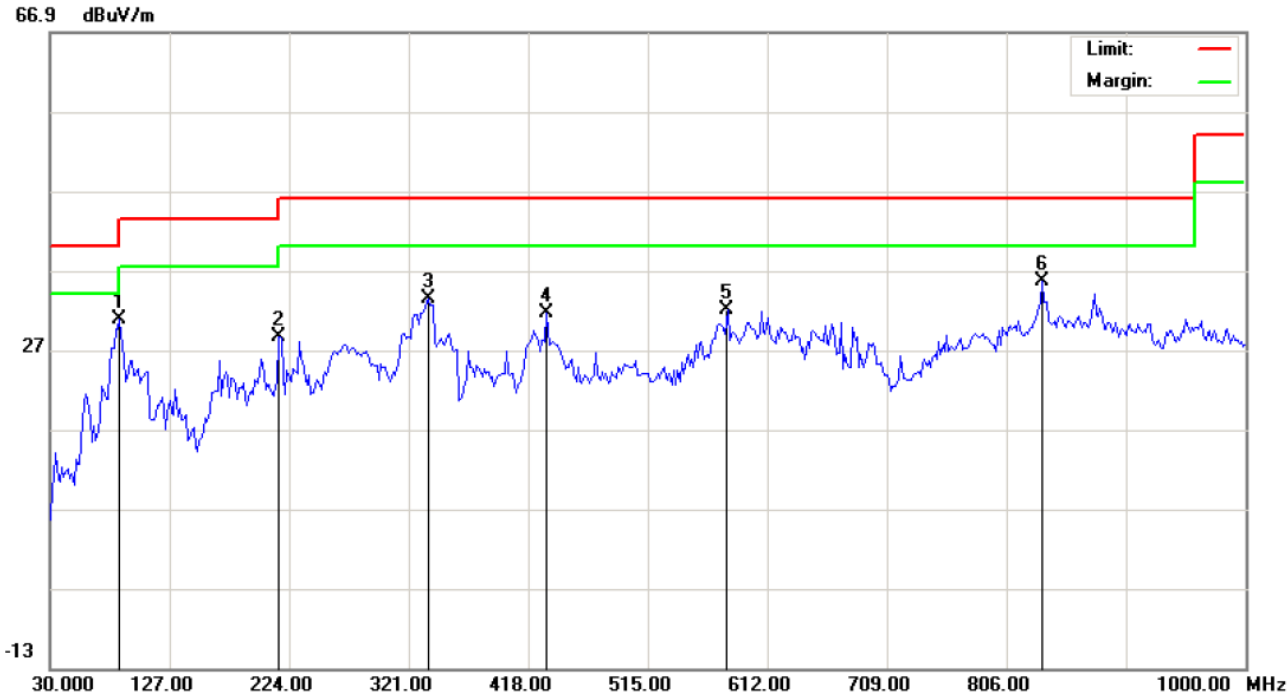
8.4 TEST RESULT

The worst case test is Normal Hopping Mode.

RADIATED EMISSION BELOW 30MHZ

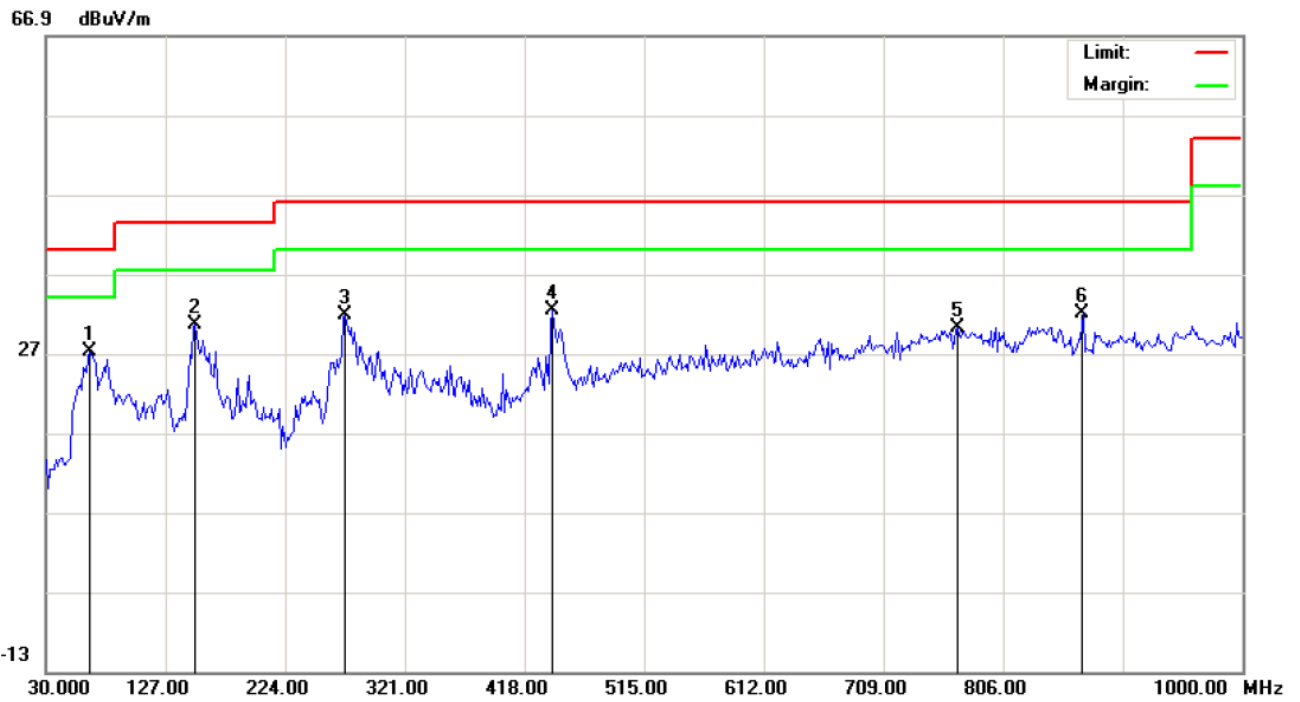
No emission found between lowest internal used/generated frequencies to 30MHz.

RADIATED EMISSION BELOW 1GHZ



| | | |
|---------------------------------|---------------------------------|-----------------|
| Site: site #1 | Polarization: <i>Horizontal</i> | Temperature: 26 |
| Limit: FCC Class B 3M Radiation | Power: | Humidity: 60 % |
| EUT: Bluetooth Mono Headset | Distance: 3m | |
| M/N: ACB-BH119A | | |
| Mode: Normal Hopping | | |
| Note: | | |

| No. | Mk | Freq. | Reading | Factor | Measurement | Limit | Over | Detector | Antenna Height | Table Degree | Comment |
|-----|----|----------|---------|--------|-------------|--------|--------|----------|----------------|--------------|---------|
| | | MHz | dBuV | dB/m | dBuV/m | dBuV/m | dB | | cm | degree | |
| 1 | * | 86.5832 | 15.85 | 14.95 | 30.80 | 40.00 | -9.20 | peak | | | |
| 2 | | 215.9166 | 17.68 | 10.93 | 28.61 | 43.50 | -14.89 | peak | | | |
| 3 | | 337.1666 | 14.48 | 18.89 | 33.37 | 46.00 | -12.63 | peak | | | |
| 4 | | 432.5500 | 10.54 | 21.09 | 31.63 | 46.00 | -14.37 | peak | | | |
| 5 | | 579.6666 | 7.32 | 24.65 | 31.97 | 46.00 | -14.03 | peak | | | |
| 6 | | 835.1000 | 5.02 | 30.55 | 35.57 | 46.00 | -10.43 | peak | | | |



Site: site #1
 Limit: FCC Class B 3M Radiation
 EUT: Bluetooth Mono Headset
 M/N: ACB-BH119A
 Mode: Normal Hopping
 Note:

Polarization: *Vertical*
 Power:
 Distance: 3m

Temperature: 26
 Humidity: 60 %

| No. | Mk | Freq. | Reading | Factor | Measurement | Limit | Over | Detector | Antenna Height | Table Degree | Comment |
|-----|----|----------|---------|--------|-------------|--------|--------|----------|----------------|--------------|---------|
| | | MHz | dBuV | dB/m | dBuV/m | dBuV/m | dB | | cm | degree | |
| 1 | * | 65.5664 | 24.55 | 2.64 | 27.19 | 40.00 | -12.81 | peak | | | |
| 2 | | 151.2500 | 12.04 | 18.55 | 30.59 | 43.50 | -12.91 | peak | | | |
| 3 | | 272.5000 | 16.14 | 15.71 | 31.85 | 46.00 | -14.15 | peak | | | |
| 4 | | 440.6333 | 10.86 | 21.48 | 32.34 | 46.00 | -13.66 | peak | | | |
| 5 | | 768.8166 | 2.89 | 27.36 | 30.25 | 46.00 | -15.75 | peak | | | |
| 6 | | 870.6666 | 2.25 | 29.82 | 32.07 | 46.00 | -13.93 | peak | | | |

9. BAND EDGES EMISSION

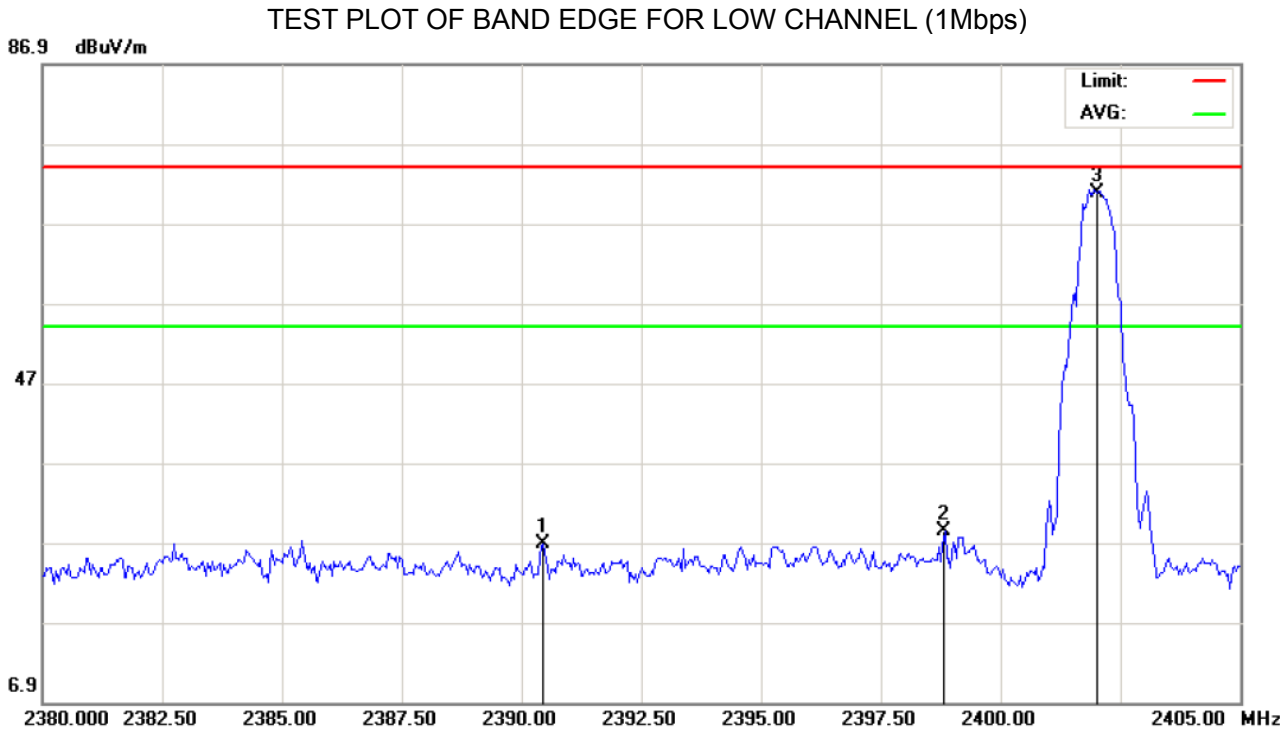
9.1 MEASUREMENT PROCEDURE

1. Set the EUT Work on the top, the bottom operation frequency individually.
2. Set SPA Start or Stop Frequency = Operation Frequency, RBW>=1%span, VBW>=RBW
3. The band edges was measured and recorded.

9.2 TEST SET-UP

The Same as described in section 8.2

9.3 TEST RESULT



| | | |
|--|---------------------------------|-----------------|
| Site: site #1 | Polarization: <i>Horizontal</i> | Temperature: 26 |
| Limit: FCC Class B 3M Radiation above 1GHZ(PK) | Power: | Humidity: 60 % |
| EUT: Bluetooth Mono Headset | Distance: 3m | |
| M/N: ACB-BH119A | | |
| Mode: Low-Channel-TX | | |
| Note: | | |

| No. | Mk | Freq. | Reading | Factor | Measurement | Limit | Over | Detector | Antenna Height | Table Degree | Comment |
|-----|----|----------|---------|--------|-------------|--------|--------|----------|----------------|--------------|---------|
| | | MHz | dBuV | dB/m | dBuV/m | dBuV/m | dB | | cm | degree | |
| 1 | | 2390.458 | 26.54 | 0.31 | 26.85 | 74.00 | -47.15 | peak | | | |
| 2 | | 2398.833 | 28.13 | 0.32 | 28.45 | 74.00 | -45.55 | peak | | | |
| 3 | * | 2402.000 | 70.39 | 0.32 | 70.71 | 74.00 | -3.29 | peak | | | |

10. NUMBER OF HOPPING FREQUENCY

10.1 MEASUREMENT PROCEDURE

1. Place the EUT on the table and set it in transmitting mode.
2. Remove the antenna from the EUT and then connect a low RF cable from the antenna port to the spectrum analyzer.
3. Set the spectrum analyzer Start = 2.4GHz Stop = 2.4835GHz
4. Set the Spectrum Analyzer as RBW>=1%span, VBW>=RBW.

10.2 TEST SETUP (BLOCK DIAGRAM OF CONFIGURATION)

Same as described in section 5.2
Conducted Method.

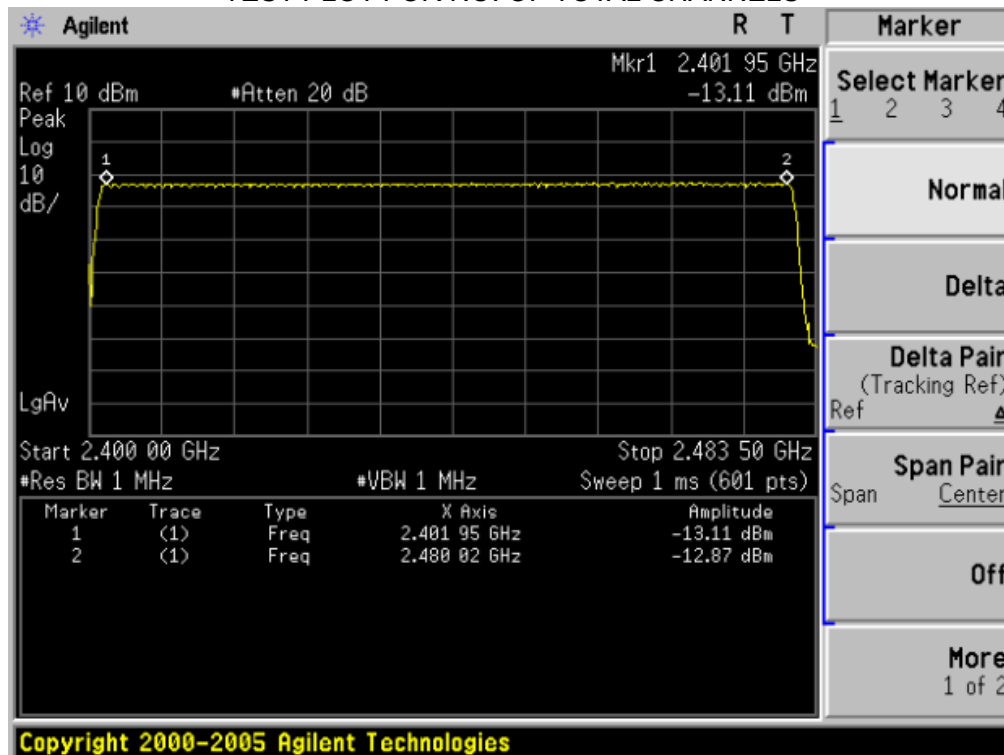
10.3 MEASUREMENT EQUIPMENT USED

The Same as described in section 5.3

10.4 LIMITS AND MEASUREMENT RESULT

| TOTAL NO. OF HOPPING CHANNEL | LIMIT (NO. OF CH) | MEASUREMENT (NO. OF CH) | RESULT |
|------------------------------|-------------------|-------------------------|--------|
| | >=15 | 79 | PASS |

TEST PLOT FOR NO. OF TOTAL CHANNELS



11. TIME OF OCCUPANCY (DWELL TIME)

11.1 MEASUREMENT PROCEDURE

1. Place the EUT on the table and set it in transmitting mode.
2. Remove the antenna from the EUT and then connect a low RF cable from the antenna port to the spectrum analyzer.
3. Set Span = zero span, centered on a hopping channel.
4. Set the spectrum analyzer as RBW=1MHz, VBW>=RBW, Span = 0 Hz.

11.2 TEST SETUP (BLOCK DIAGRAM OF CONFIGURATION)

Same as described in section 5.2
Conducted Method

11.3 MEASUREMENT EQUIPMENT USED

The same as described in section 5.3

11.4 LIMITS AND MEASUREMENT RESULT

Bluetooth 3Mbps Test Result

| Channel | Time of Pulse for DH5 (ms) | Period Time (s) | Sweep Time (ms) | Limit (ms) |
|---------|----------------------------|-----------------|-----------------|------------|
| Low | 2.910 | 31.6 | 310.85 | 400 |
| Middle | 2.910 | 31.6 | 310.85 | 400 |
| High | 2.900 | 31.6 | 309.78 | 400 |

Low Channel Time

$$2.910 * (1600/6) / 79 * 31.6 = 310.85 \text{ms}$$

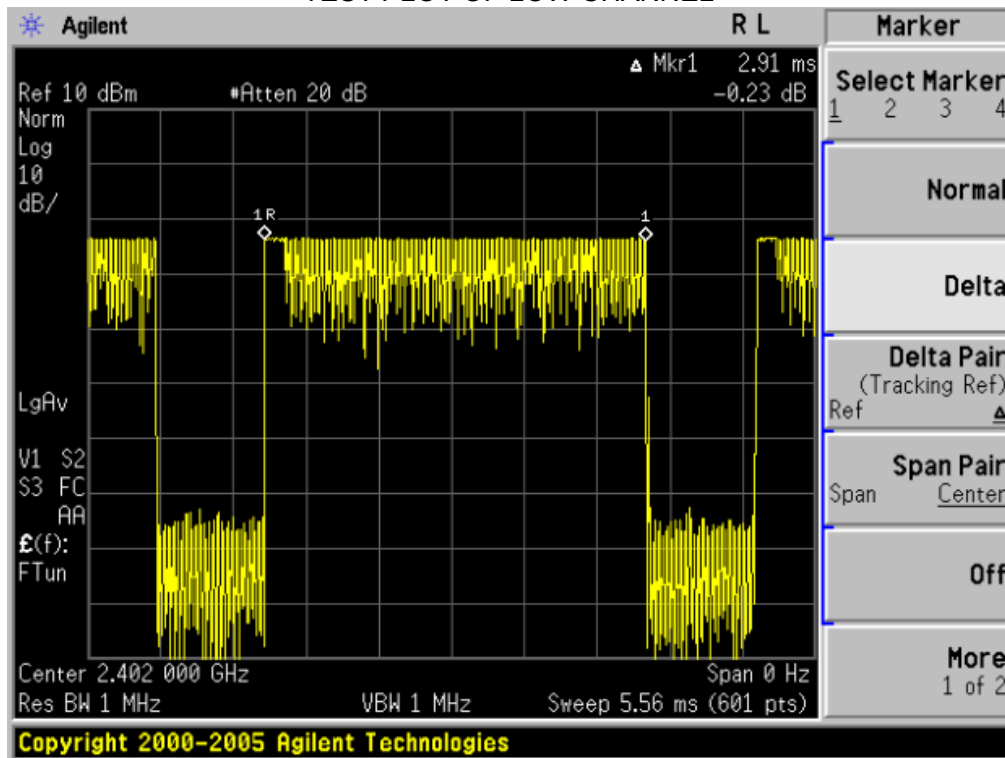
Middle Channel Time

$$2.910 * (1600/6) / 79 * 31.6 = 310.85 \text{ms}$$

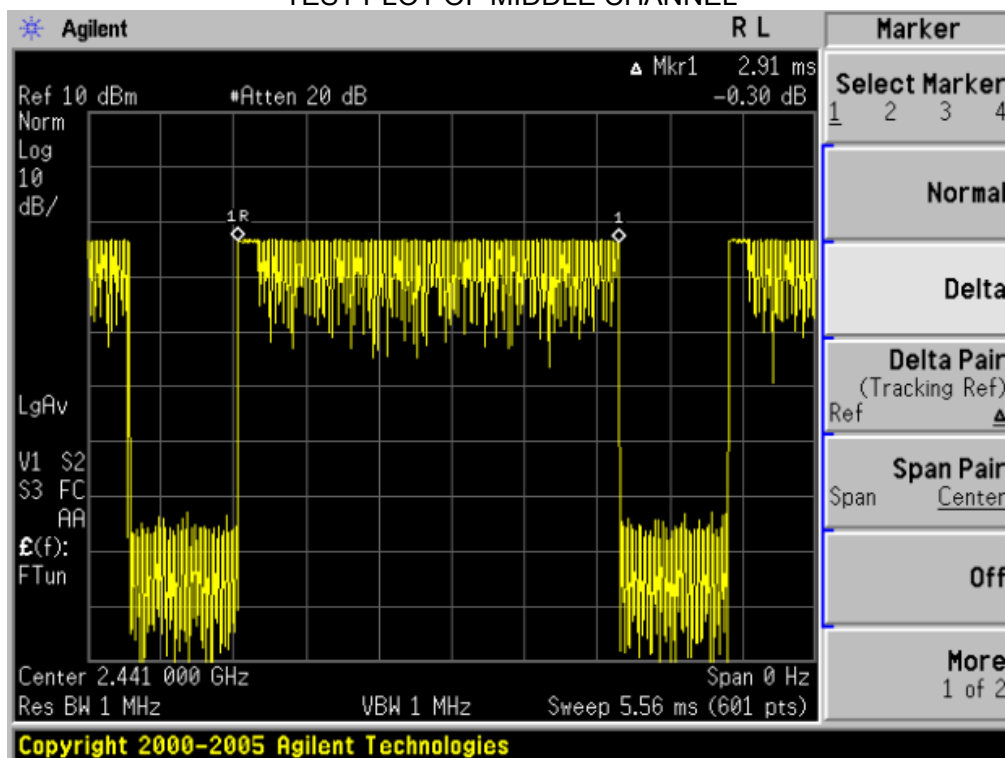
High Channel Time

$$2.900 * (1600/6) / 79 * 31.6 = 309.78 \text{ms}$$

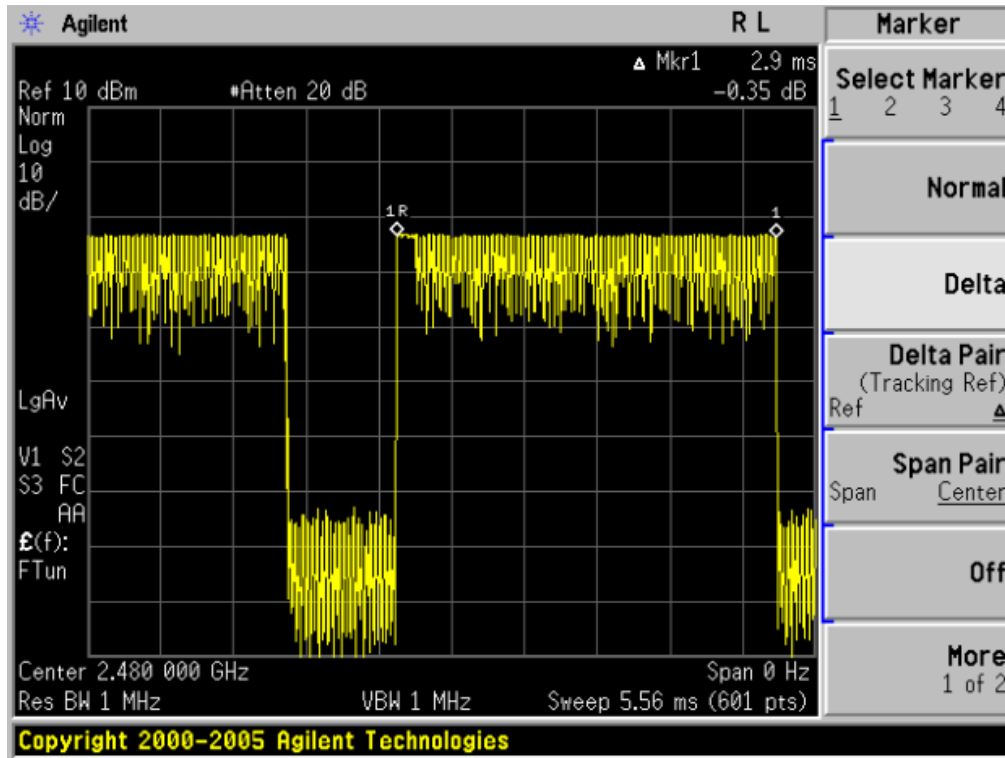
TEST PLOT OF LOW CHANNEL



TEST PLOT OF MIDDLE CHANNEL



TEST PLOT OF HIGH CHANNEL



12. FREQUENCY SEPARATION

12.1 MEASUREMENT PROCEDURE

1. Place the EUT on the table and set it in transmitting mode
2. Remove the antenna from the EUT and then connect a low RF cable from the antenna port to the spectrum analyzer
3. Set Span = wide enough to capture the peaks of two adjacent channels Resolution (or IF) Bandwidth (RBW) \geq 1% of the span Video (or Average) Bandwidth (VBW) \geq RBW; Sweep = auto; Detector function = peak; Trace = max hold

12.2 TEST SETUP (BLOCK DIAGRAM OF CONFIGURATION)

Same as described in section 5.2

12.3 MEASUREMENT EQUIPMENT USED

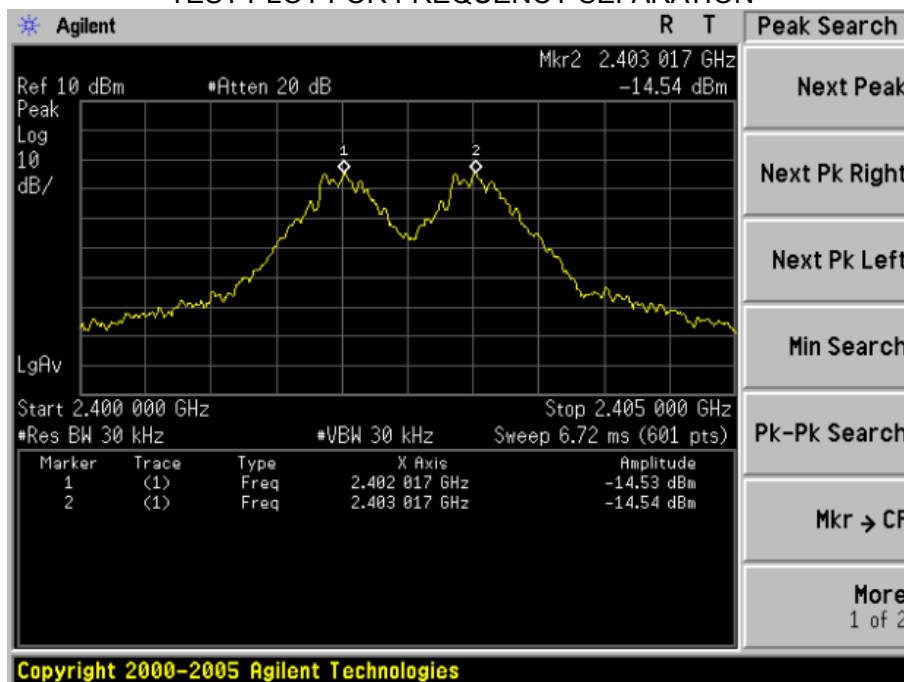
The same as described in section 5.3

12.4 LIMITS AND MEASUREMENT RESULT

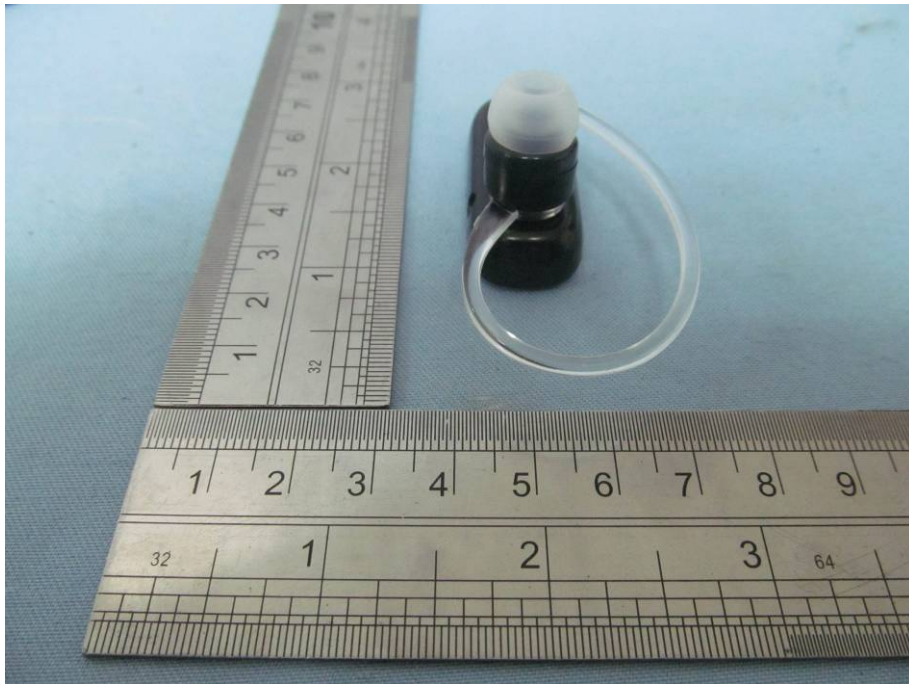
BLUETOOTH 1MBPS TEST RESULT

| CHANNEL | CHANNEL SEPARATION | LIMIT | RESULT |
|-----------|--------------------|-------------------------------|--------|
| | KHz | KHz | |
| CH00-CH01 | 1000 | \geq 25 KHz or 2/3 20 dB BW | Pass |

TEST PLOT FOR FREQUENCY SEPARATION



APPENDIX I
PHOTOGRAPHS OF THE EUT
TOP VIEW OF EUT



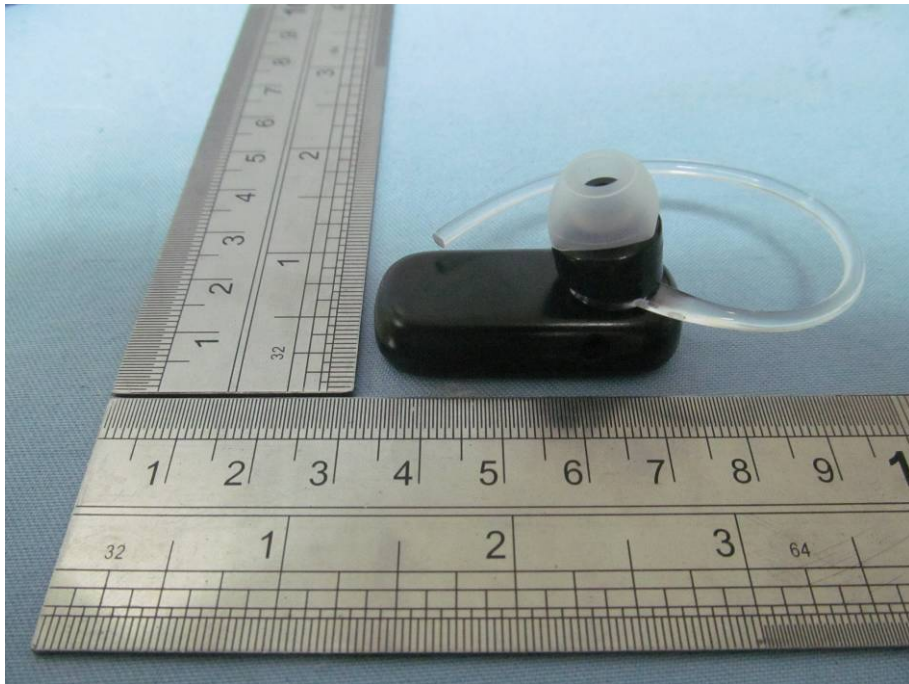
BOTTOM VIEW OF EUT



LEFT VIEW OF EUT



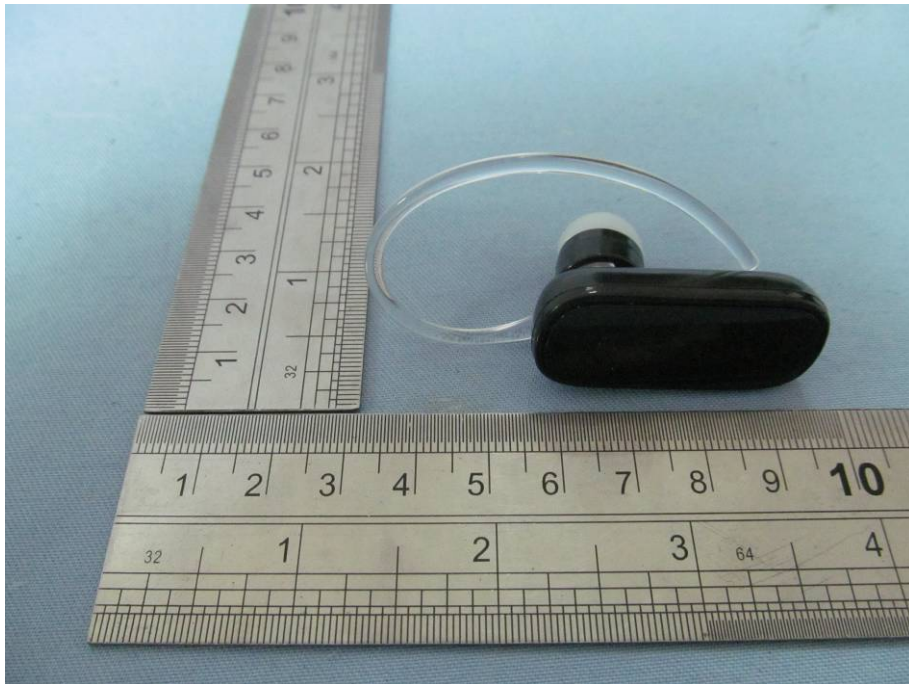
RIGHT VIEW OF EUT



FRONT VIEW OF EUT



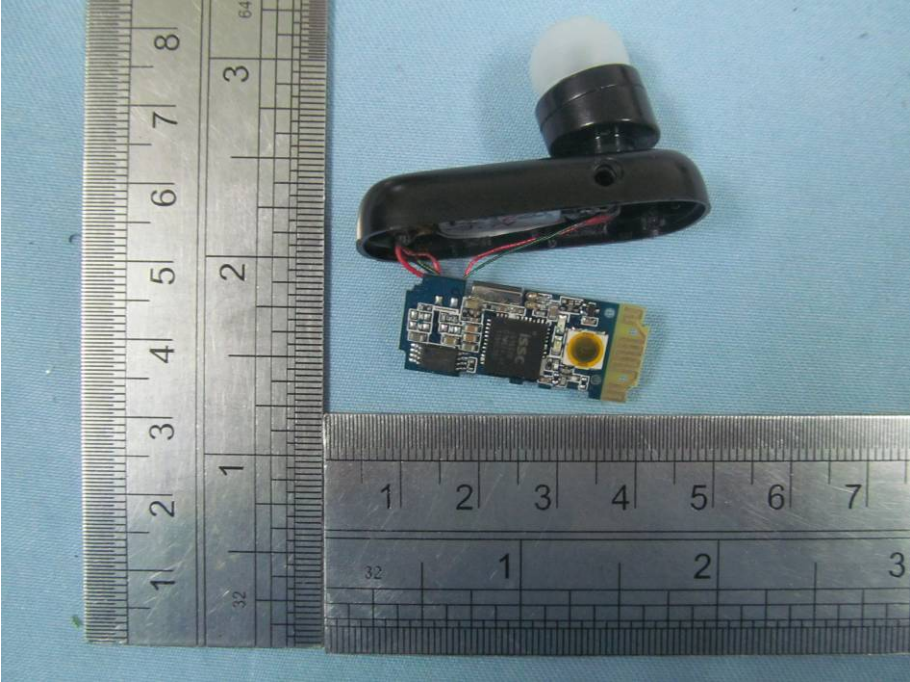
BACK VIEW OF EUT



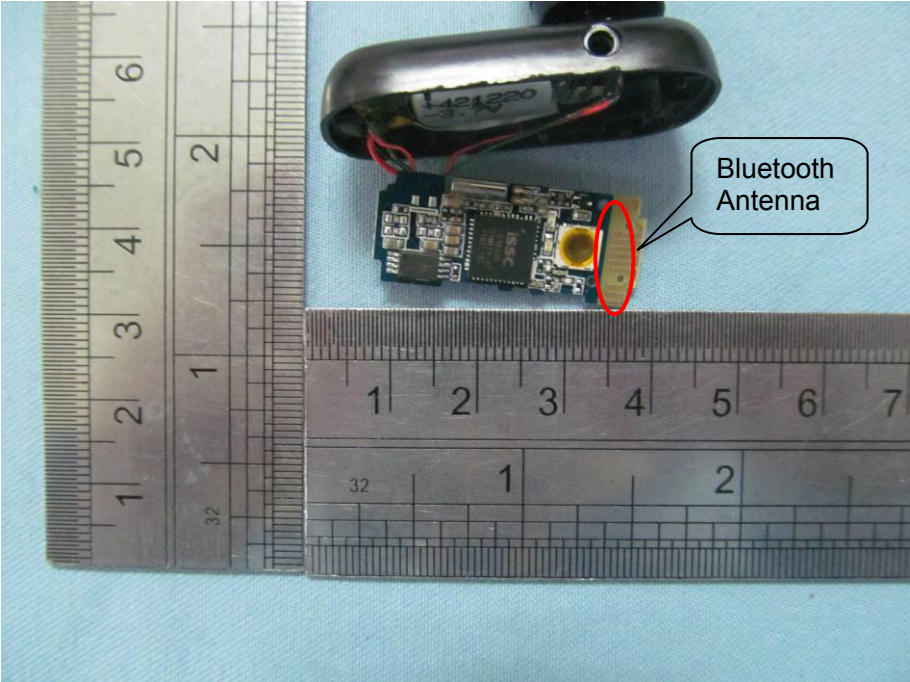
OPEN VIEW OF EUT



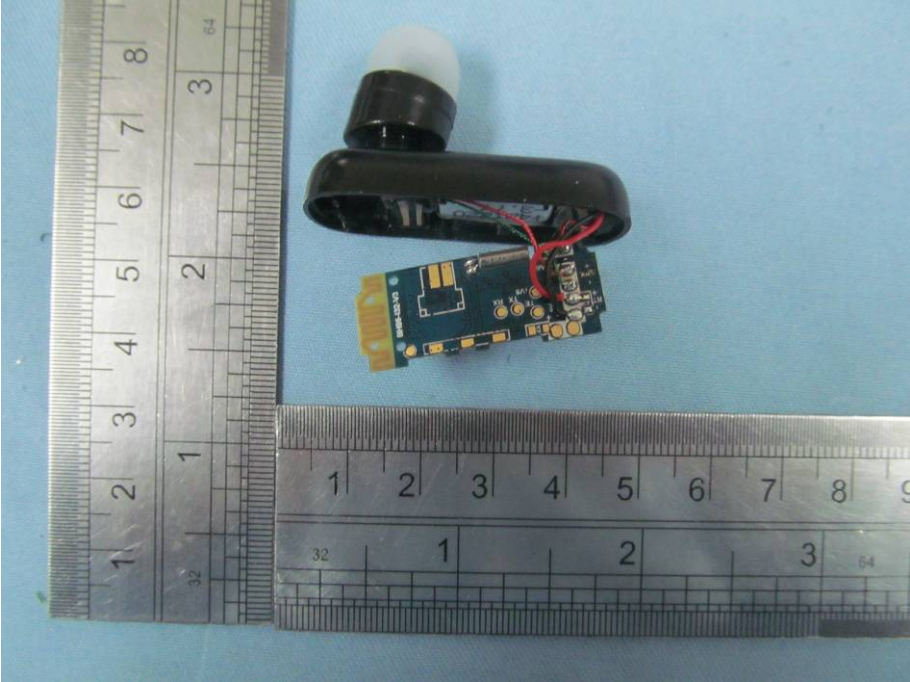
INTERNAL VIEW OF EUT



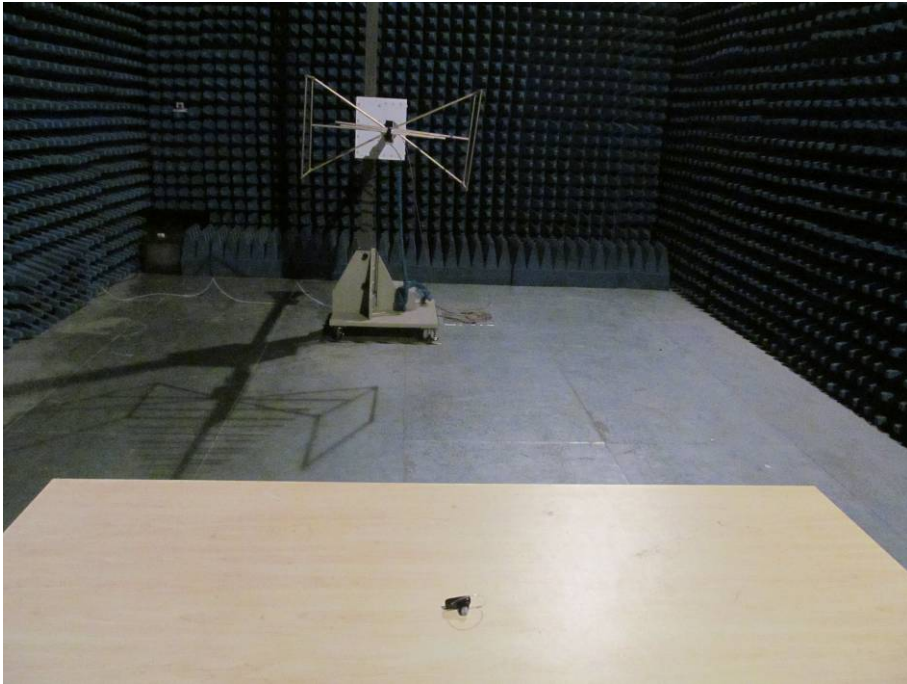
FRONT VIEW OF PCB



BACK VIEW OF PCB



APPENDIX II
PHOTOGRAPHS OF THE TEST SETUP
RADIATED SPURIOUS EMISSION



----END OF REPORT----