



深圳市民展科技开发有限公司
Shenzhen My-Power Technology Co.,Ltd.

SPECIFICATIONS

Product Name PS3 bluteeth wireless dual shock 6-axis gamepad

Product No. SZ-906

PAGE 1 of 30

VER V1.0

DATE	PREPARED	CHECKED	APPROVED
2012-2-1			

☒ SPECIFICATIONS FOR PRODUCT

☐ SPECIFICATIONS FOR SAMPLE

Note

- 1) The following information of the specification will be updated any time without notice. Please check the latest version of the specification before using it.
- 2) We will not be responsible due to the mistake or improper use for the circuit.

RECORDS OF REVISION

DATE	REVISED NO.	REVISED DESCRIPTIONS	PREPARED	CHECKED	APPROVED
2012-2-1	V1.0	The first version.			

CONTENTS

1. General Description 3

2. Features..... 3

3. Function 3

4. Upgrade process Online Operation 6

5 Electrical parameters 11

6 SZ-906 information 12

1. General Description

SZ-906 is a bluetooth gamepad application for PS3, adopt the latest motion sensing technology, can detect full range of dynamic information that Roll, Pitch, Yaw. MTF0389 not only accurately sensing the angle of gamepad, but also catch 3-axis acceleration information that three-dimensional space X Y Z, and then quickly send all of the information to game system, so player can do special operation through this technology.



2. Features

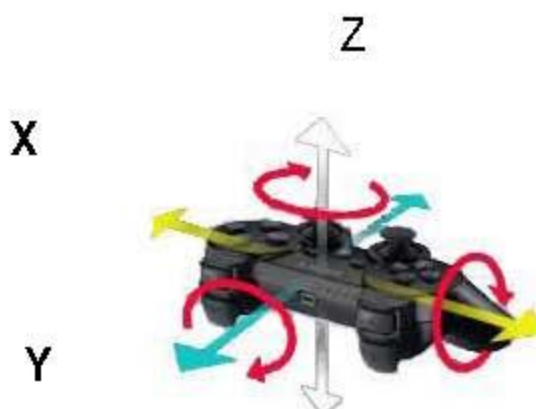
- ◆ Support any software version PS3 host
- ◆ RF_2.4G, control distance range up to 10m
- ◆ 3D accelerometer and Gyro sensor, six-axis sensor
- ◆ Seven channels LED indication, Turbo LED indication
- ◆ The mode of BT connecting is the same as SONY gamepad
- ◆ Support Li-battery provide power
- ◆ Support dual vibration motors
- ◆ Standard PS3 function(work in PC by Driver)
- ◆ Wide range operating voltage, low power consumption
- ◆ Support receiver connected to PC USB upgrade program online, and support PS3 host upgrade system, which can avoid that product not used because of host upgrade.

3. Function

3.1 PS3 platform

PS3 host function

- i. Six-axis function achieves through 3D-Sensor and G-Sensor, please look at the picture:



ii. Six-axis description:

X axis: acceleration motion X+/X- is: left → right, right → left, refer to 'NBA07'

Y axis: acceleration motion Y+/Y- is: front → later, later → front, refer to "NBA07"

Z axis: acceleration motion Z+/Z- is: up → down, down → up, refer to 'NBA07'

Roll axis(left/right tilt): Y axis is tilting center: level → left tilt, level → right tilt, refer to 'BLAZING ANG', 'TONY HAWK'S', 'GENJI', 'RIDGE RACER'

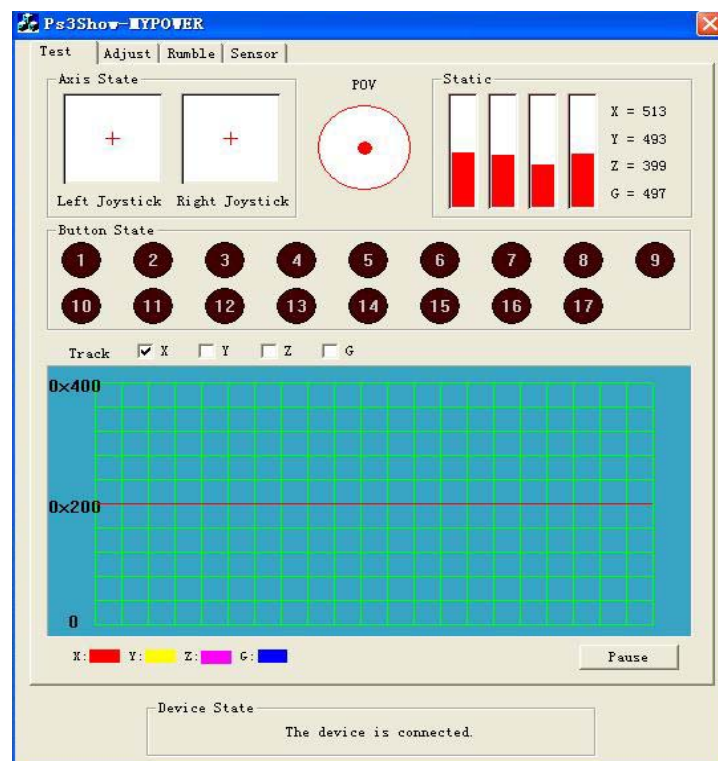
Pitch axis(front/later tilt): X axis is tilting center: level → front tilt, level → later tilt, refer to 'BLAZING ANG', 'TONY HAWK'S', 'GENJI'

Yaw axis(left/right rotation): Z axis is rotation center: level → left rotation, level → right rotation, refer to 'NBA07', 'TONY HAWK'S'.

3.2 Standard-PS3 operation mode

3.2.1 [When select Standard PS3 operation mode](#), gamepad can achieve any game functions on PS3 host, which include basic digital and analog keys, 6-axis SENSOR, channel LED display, also support vibration for specific game in PS3 software V2.0, at the same time, when testing will be display a logo that virtual 4-axis 19 keys device in PC, and the gamepad can't operated only after installed driver software, the device view please look following.

3.2.2 The default operated mode interface of 4-axis 17KEY 1POV in Windows:



3.3 Turbo and Clear setting

3.3.1 Turbo setting

Press Turbo + one key, the key enter Turbo station, △ BU ○ BR X BD □ BL L1
R1 L2 R2 which these eight can set Turbo function.

3.3.2 Turbo station clear, there have three modes to select:

- ▲ Pressing Turbo+ key can clear Turbo function;
- ▲ Pressing Turbo + Select can clear all of the Turbo function;
- ▲ Pressing the Clear mode key also can all of the Turbo function.

3.4 Sensor calibration

Product must be calibrated in order to ensure sensor effect of consistency;

Calibration mode: adjust gamepad position(face up and horizontal), first, press two keys MENU+SELECT, four channel LEDs light in the same time, then press Start key, the LEDs light off 3s →light → light off, and automatically go into connecting status, it is suggested that SENSOR successfully calibrated.

3.5 TURBO_LED indication

After Gamepad connected, when set TURBO OK, Turbo LED flash twelve one second.

3.6 Online communication instructions

The gamepad will be enter sleeping during 30s that gamepad search and can't communicated to host, and gamepad also enter sleeping status when no press, no 3D move during ten minutes in connecting station; press Menu can wake up the gamepad.

3.7 BT online mode

3.7.1 When the handle is not connected with the current PS3 console and the other had, or has been connected to the host, needs and current host connection, you first need to first with a USB cable for wired communication with the PS3 console. Communication process in the program automatically on the code, then you can use Bluetooth in wireless communication.

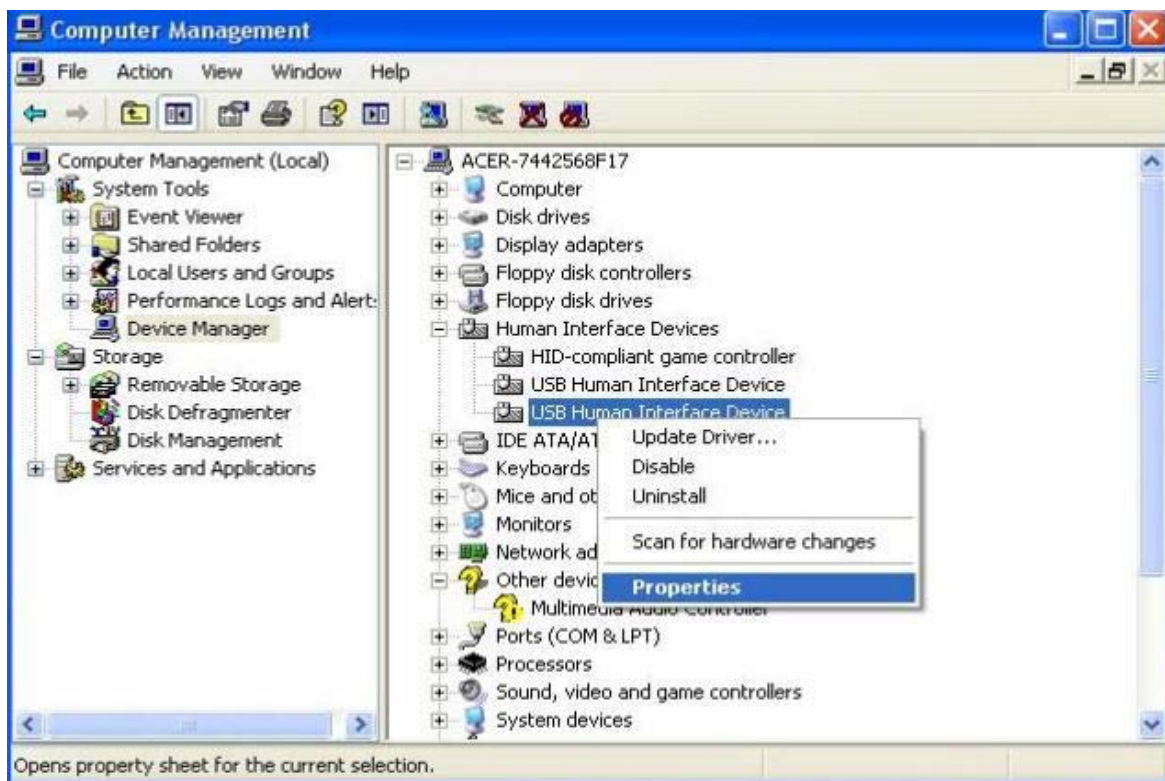
3.7.2 PS3 host only support seven BT device, the total number of BT device or gamepad are seven; the maximum number of BT device in PS3 host: one remote, one MIC, three gamepads, and three wire gamepad.

3.8 Standard _PS3 and PC keys correspondence

PS3&PC keys table													
PS3	△	○	X	□	L2	R2	L1	R1	SELEC T	STAR T	L3	R3	MENU
PC	1	2	3	4	5	6	7	8	9	10	11	12	13

4. Upgrade process Online Operation

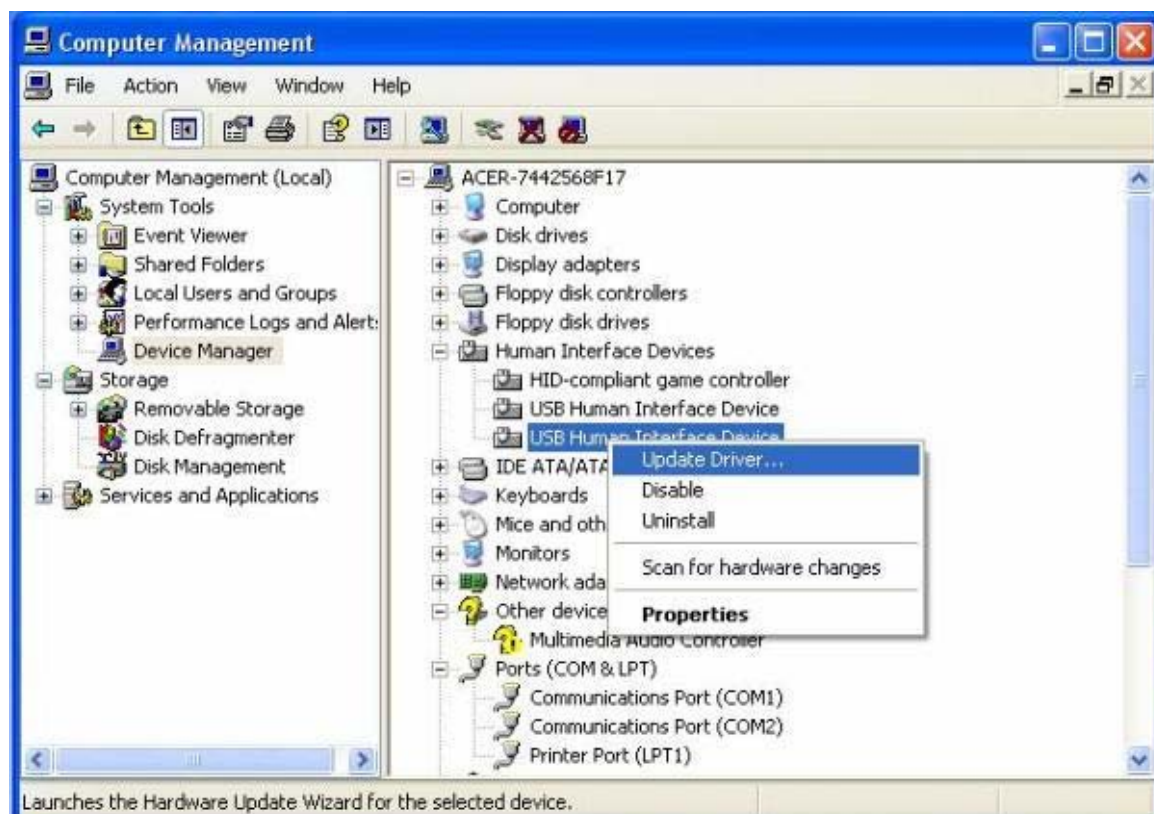
- 1) Press select + R3 button, and then plug in the USB, until the 4 LED Steady into the Update mode.
- 2) Go into the computer Device Manager, right-click Properties, as shown below.



View detailed information, to ensure the VID / PID as shown below.



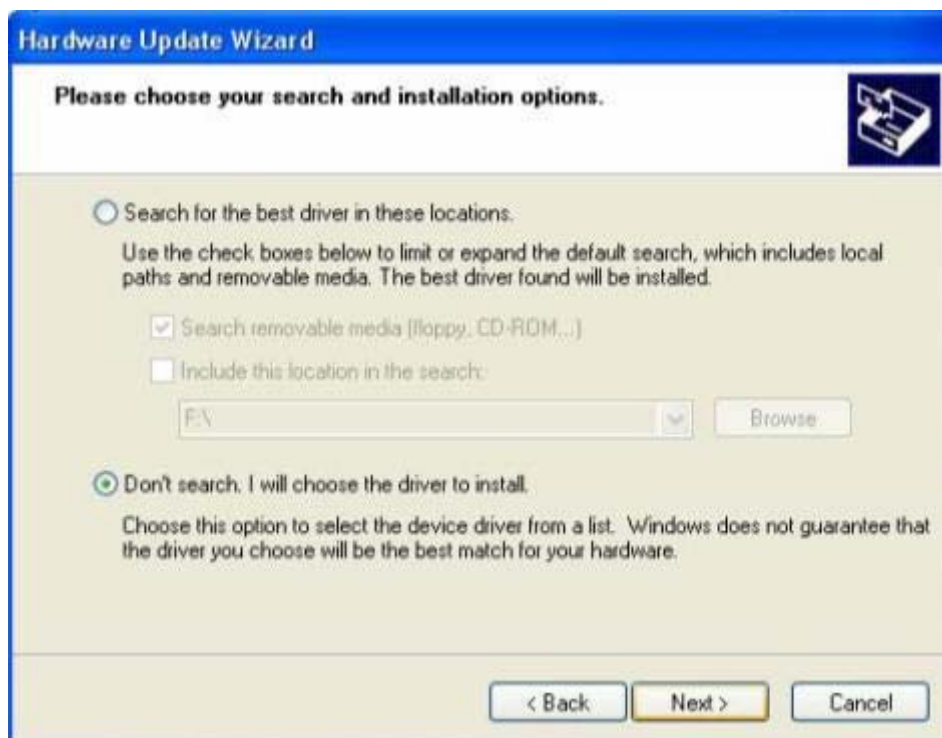
3) Right-click the Update Driver, as shown below.



Choose from a list or specific location, click Next.



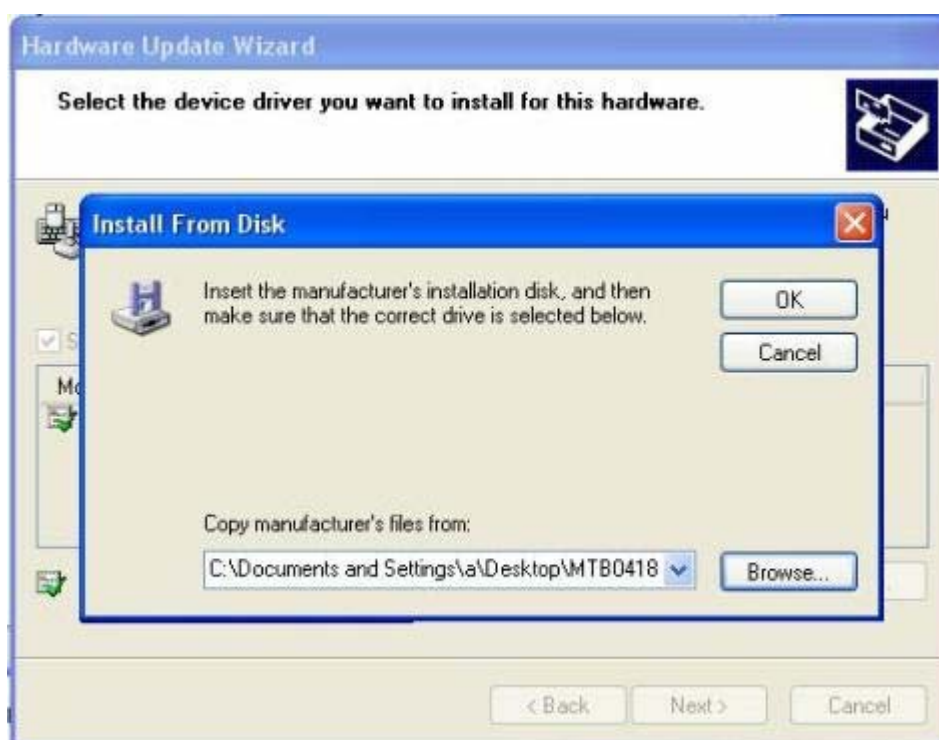
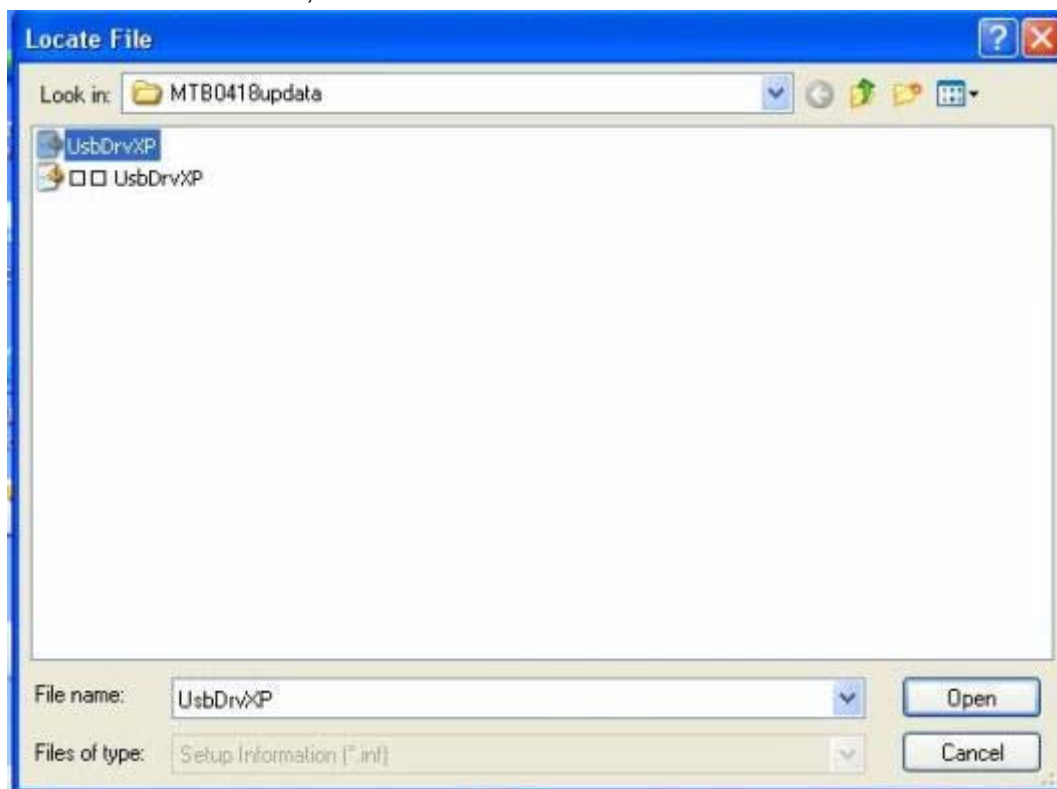
Select do not search, I will choose the driver to install, the next step.



Select Disk.



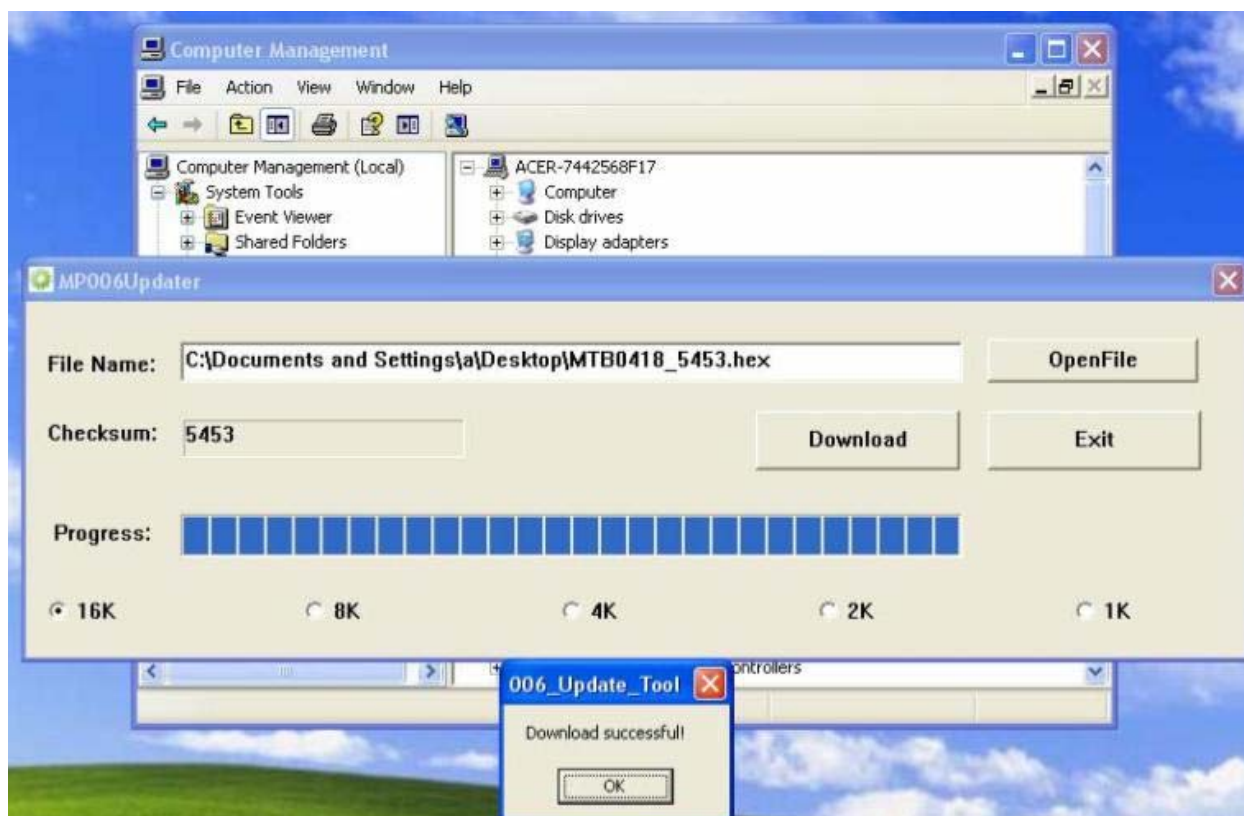
Select the installation file, determined and click Next.



4) As shown follow, the installation is complete.



5) Open the installed driver: UpdateTool.exe, select the process and download.



5 Electrical parameters

1) MTB0418 electrical parameters

Reference: GND, ambient temperature:25

Parameter	Symbol	Condition	MIN	TYP	MAX	UNIT
Operating voltage	Vo	Host				V
Searching circuit	Ish	Host				mA
Operating circuit	Io	Host				mA
Sleeping circuit	Isp	host				uA

2) MTB0418 limit rating

Reference: GND, ambient temperature:25

Parameter	Symbol	Rating	
Input voltage	USB_V _{IN}		V
Output voltage	USB_I _{IN}		mA
Working temperature range	T _J		°C
Storage temperature	T _{STG}		°C

FCC Caution: Any changes or modifications not expressly approved by the party responsible for compliance could void the user's authority to operate this equipment.

This device complies with Part 15 of the FCC Rules. Operation is subject to the following two conditions: (1) This device may not cause harmful interference, and (2) this device must accept any interference received, including interference that may cause undesired operation.

Note: This equipment has been tested and found to comply with the limits for a Class B digital device, pursuant to part 15 of the FCC Rules. These limits are designed to provide reasonable protection against harmful interference in a residential installation. This equipment generates, uses and can radiate radio frequency energy and, if not installed and used in accordance with the instructions, may cause harmful interference to radio communications. However, there is no guarantee that interference will not occur in a particular installation. If this equipment does cause harmful interference to radio or television reception, which can be determined by turning the equipment off and on, the user is encouraged to try to correct the interference by one or more of the following measures:

—Reorient or relocate the receiving antenna.

—Increase the separation between the equipment and receiver.

—Connect the equipment into an outlet on a circuit different from that to which the receiver is connected.

—Consult the dealer or an experienced radio/TV technician for help.

☐