

EXHIBIT 5: TEST SET UP PHOTOGRAPHS

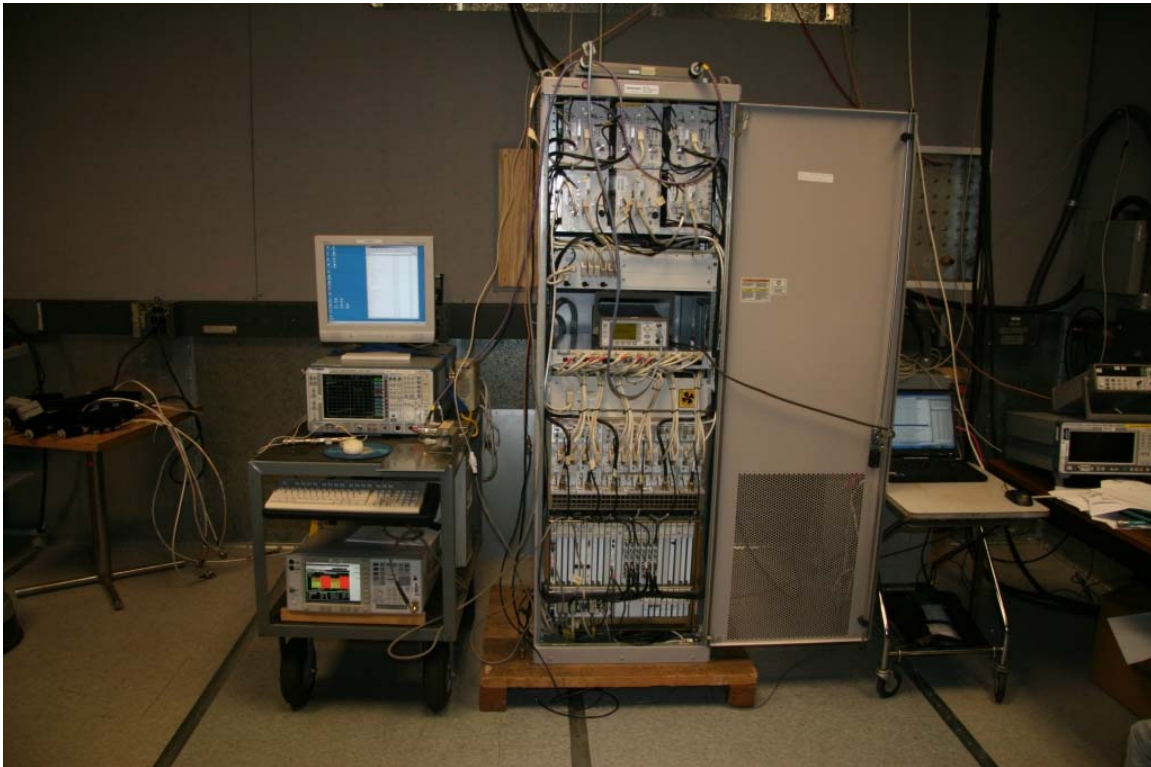
The photographs in this exhibit show the test equipment configuration for each test performed.

Alcatel-Lucent's **1900MHz High Efficiency RF Power Amplifier (HE PAM)** will be deployed in the **9391 OneBTS Macrocells**, in combination with the previously authorized **MCR 1900MHz radio** for Universal Mobile Telecommunications System (UMTS) operation in the North America Region (NAR).

The photographs displayed show the equipment under test (EUT) and test equipment configured for the corresponding tests listed.

TEST: **Measurement of RF Power Output**
 Measurement of Modulation Characteristics
 Measurement of Occupied Bandwidth
 Measurement of Spurious Emissions at the Antenna Terminals

View: **UMTS 9391 OneBTS Macrocell Base Station system front view showing all instrumentation and RMT control computer.**



TEST: Measurement of Radiated Spurious Emissions

View: UMTS 9391 OneBTS Macrocell Base Station system front view, showing test configuration in the Murray Hill Semi-Anechoic Chamber.

