

APPLICANT: LUCENT TECHNOLOGIES

FCC ID: AS5ONEBTS-05

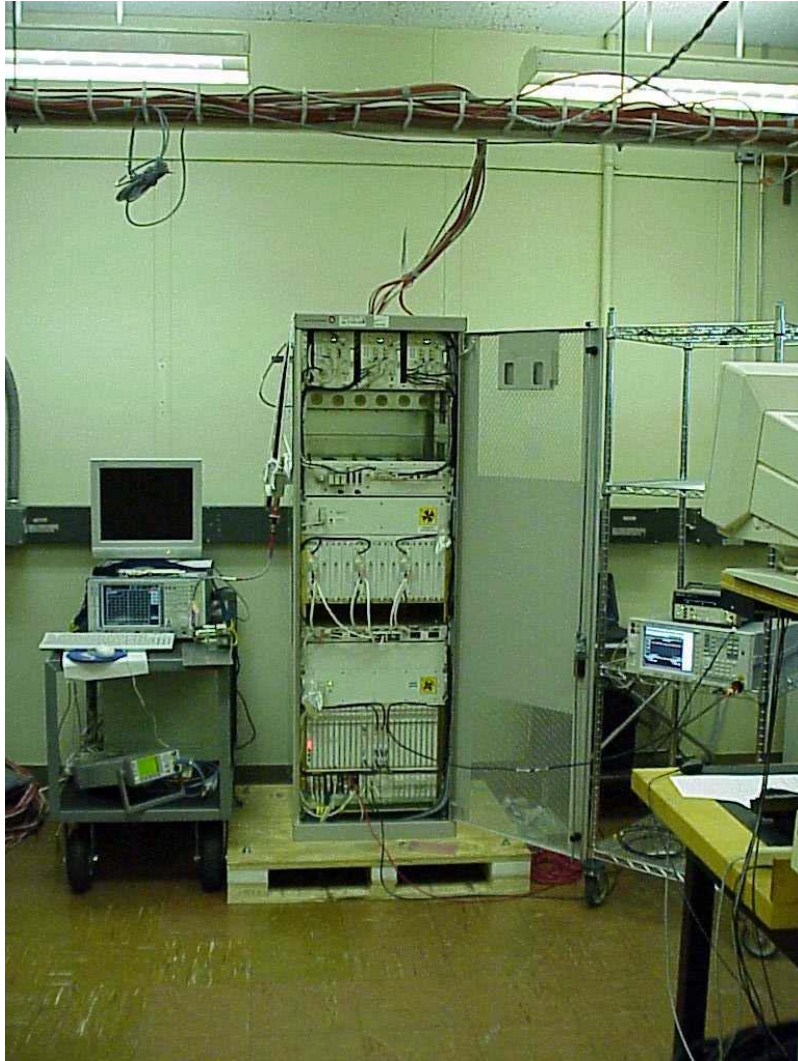
EXHIBIT 6: TEST SET UP PHOTOGRAPHS

The photographs in this exhibit show the test equipment configured for the following tests:

Lucent UMTS Flexent® OneBTS™ W1900M (SD-2R521-01) Wireless Base Station, incorporating the PCS UMTS-CDMA Radio (UCR1900), BNJ27B; the P2PAM power amplifier; and the 20 MHz wideband, low loss, A/D Dual Duplex (DDpx) bandpass filters.

TEST: **Measurement of RF Power Output**
 Measurement of Modulation Characteristics
 Measurement of Occupied Bandwidth
 Measurement of Spurious Emissions at the Antenna Terminals

View: **UMTS Equipment Frame Front View, Showing Test Configuration for**
 Measuring Emissions Conducted to the Antenna Terminal .



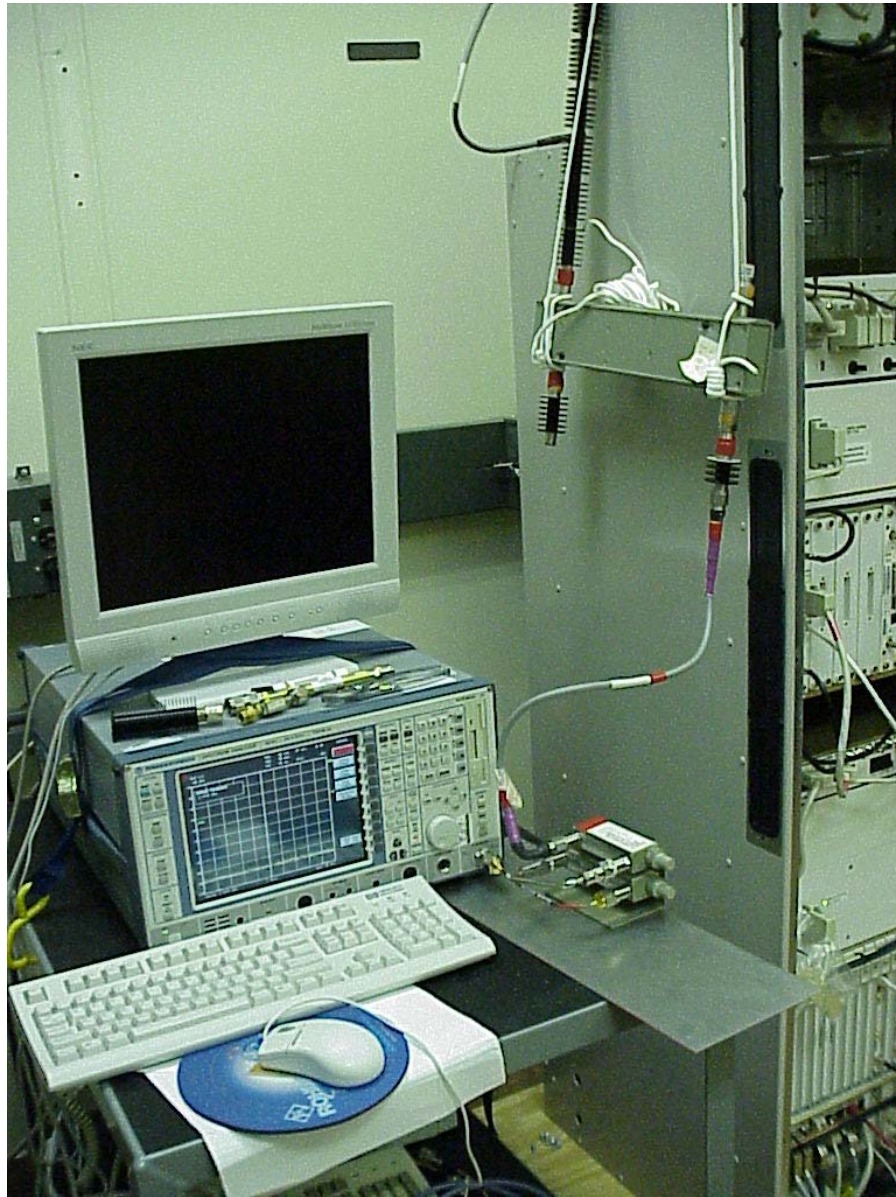
APPLICANT: LUCENT TECHNOLOGIES

FCC ID: AS5ONEBTS-05

EXHIBIT 6: TEST SET UP PHOTOGRAPHS

TEST: **Measurement of RF Power Output**
 Measurement of Modulation Characteristics
 Measurement of Occupied Bandwidth
 Measurement of Spurious Emissions at the Antenna Terminals

View: **UMTS Equipment Frame Side View, Showing Close-up of Test Configuration**
 for Measuring Emissions Conducted to the Antenna Terminal .



APPLICANT: LUCENT TECHNOLOGIES

FCC ID: AS5ONEBTS-05

EXHIBIT 6: TEST SET UP PHOTOGRAPHS

TEST: Measurement of Radiated Spurious Emissions

View: UMTS Equipment Frame Front View, Showing Test Configuration in the Whippany Semi-Anechoic Chamber.

