

## **EXHIBIT 9B: INTERNAL PHOTOGRAPHS**

### **SECTION 2.1033 (c) (12)**

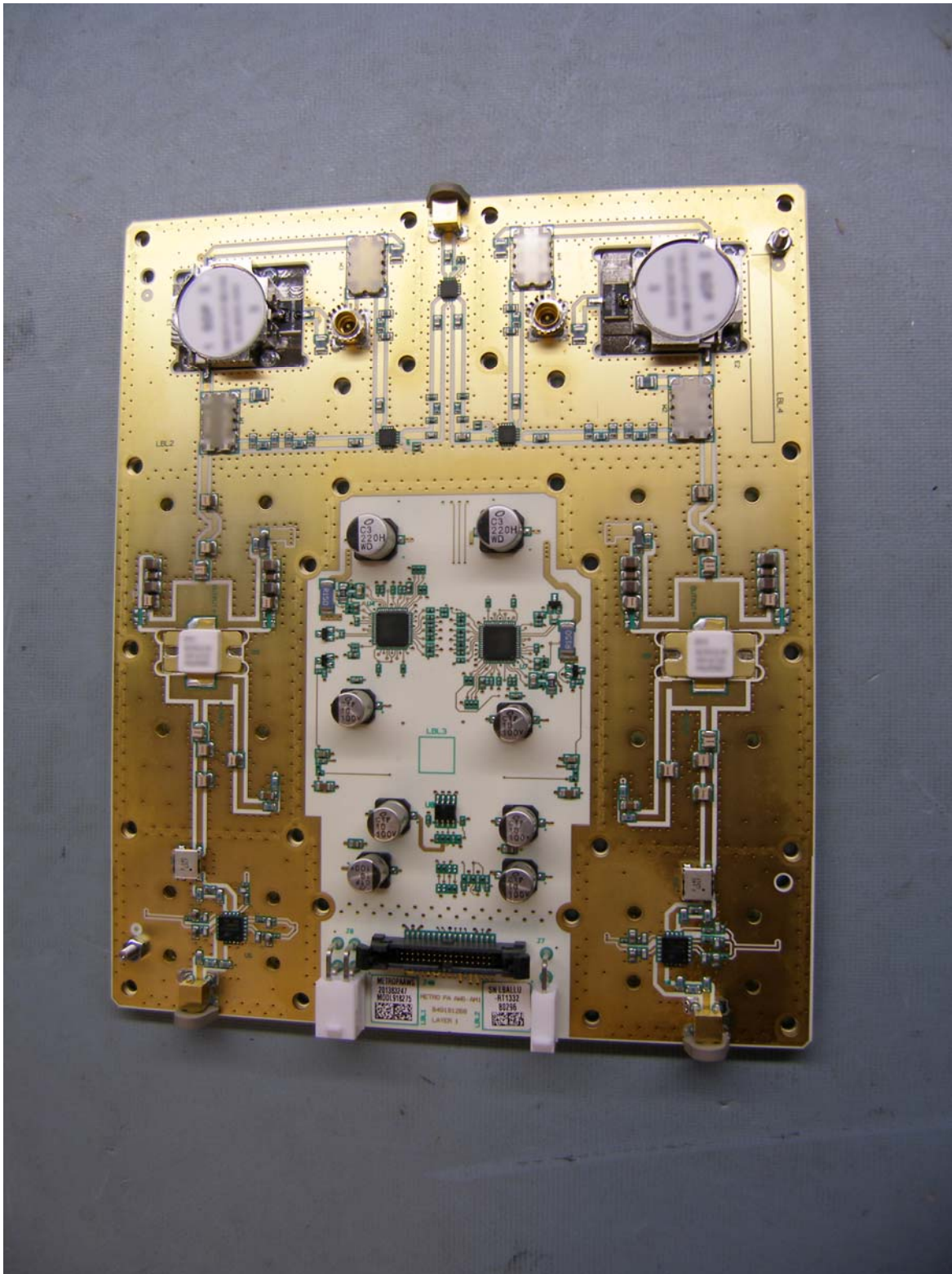
Photographs (8"x10") of the equipment of sufficient clarity to reveal equipment construction and layout, including meters, if any, and labels for controls and meters and sufficient views of the internal construction to define component placement and chassis assembly. Insofar as these requirements are met by photographs or drawings contained in the instruction manuals supplied with the product certification request, additional photographs are necessary only to complete the required showing.

#### **Response:**

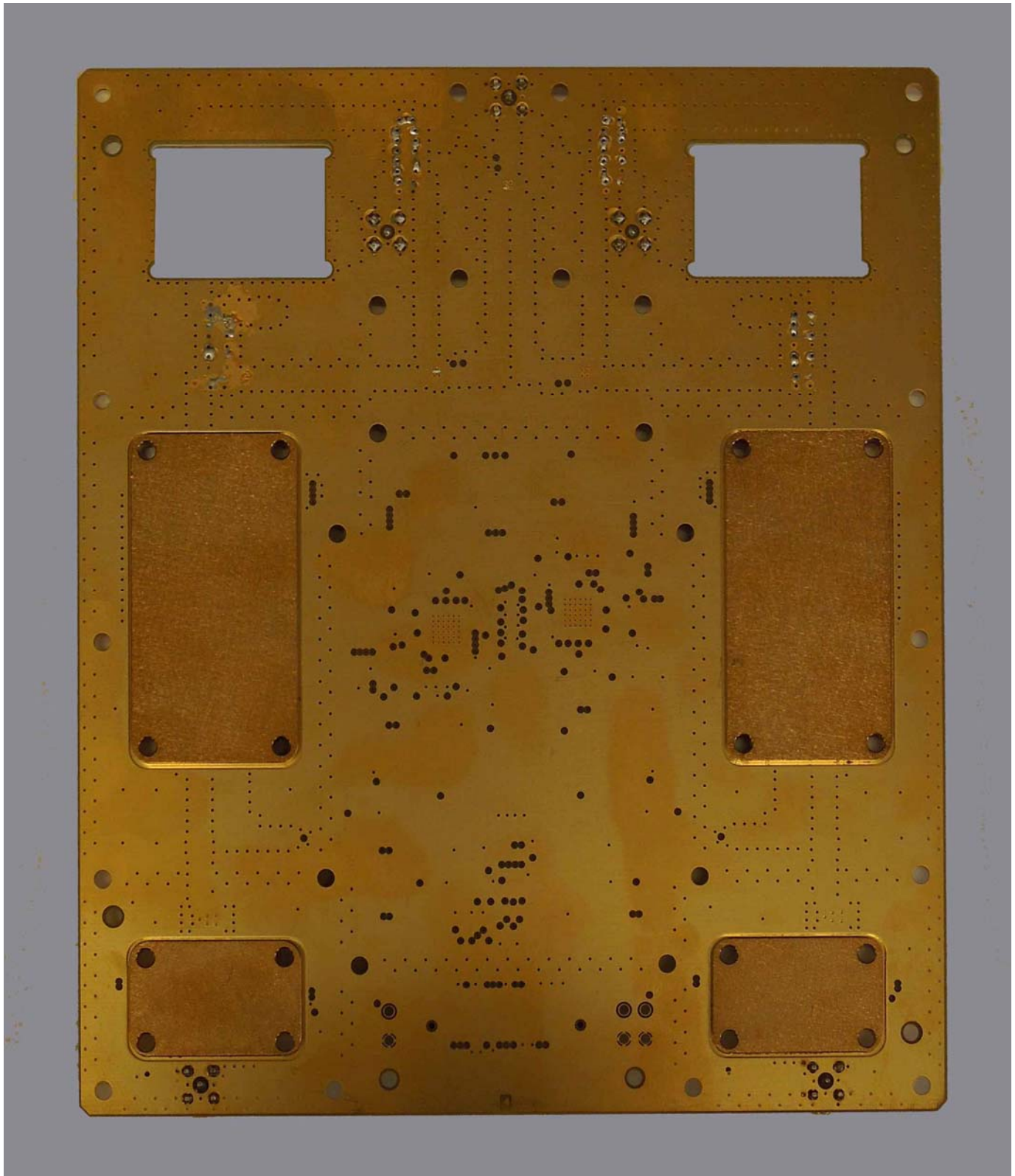
The internal photographs of the **Alcatel-Lucent's AWS LTE 9764 Metro Cell Outdoor Transceiver System FCC ID: AS5BBTRX-17** are attached.

## Internal Photographs

### Front Internal of PA Board

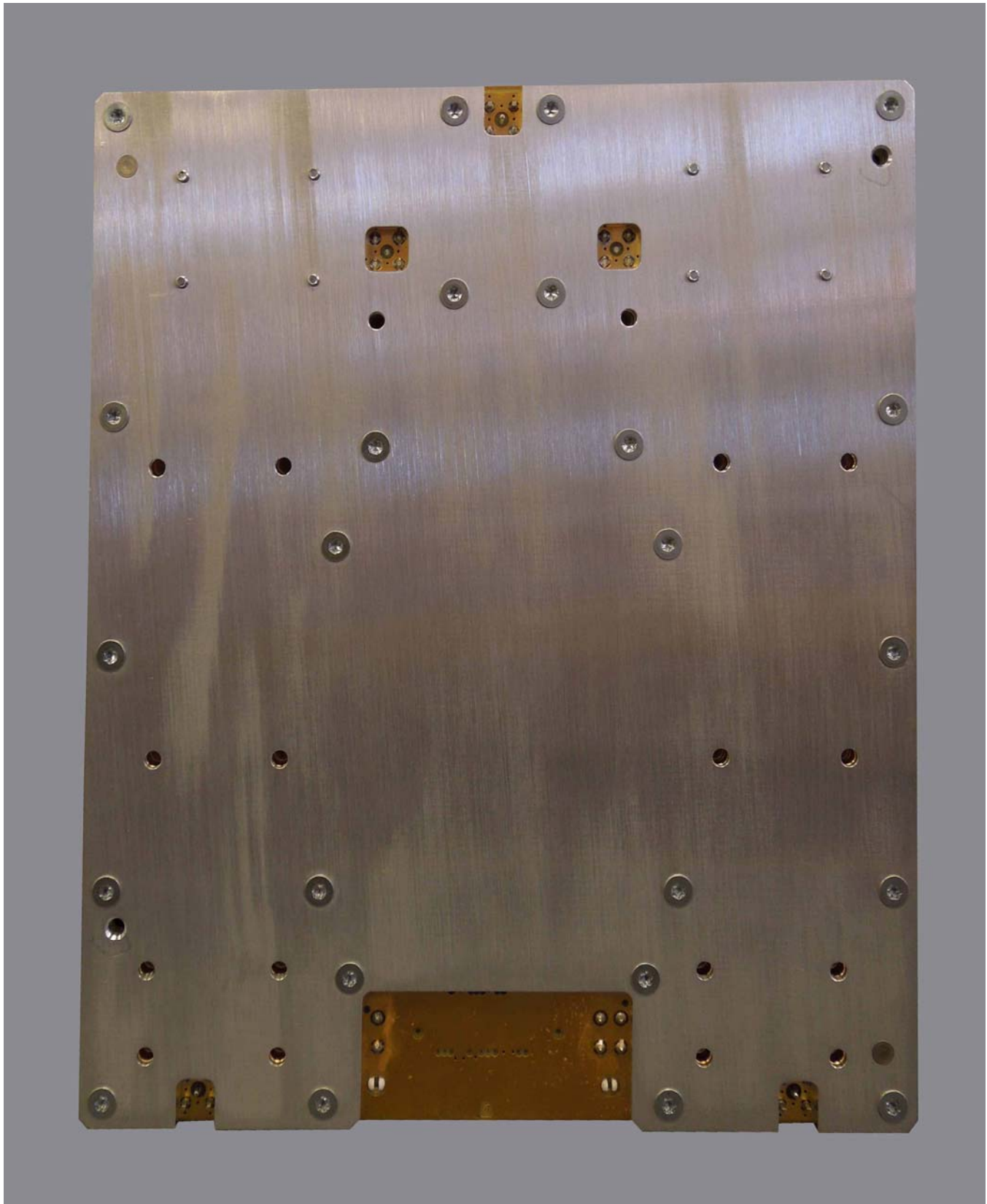


**Rear Internal of PA Board**





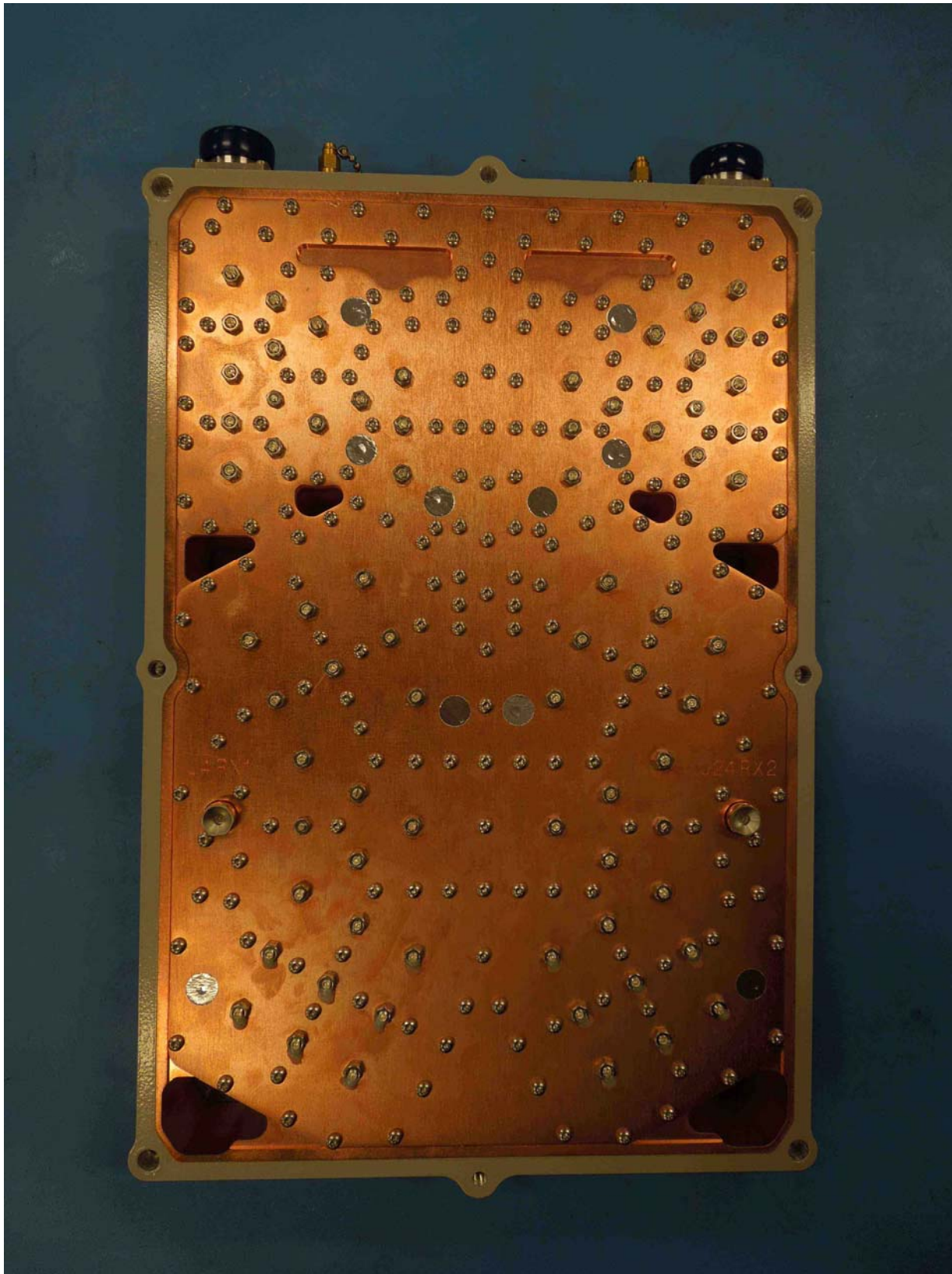
**Front Internal of PA Board with Shield**



**Front Internal of PA Board with Shield**



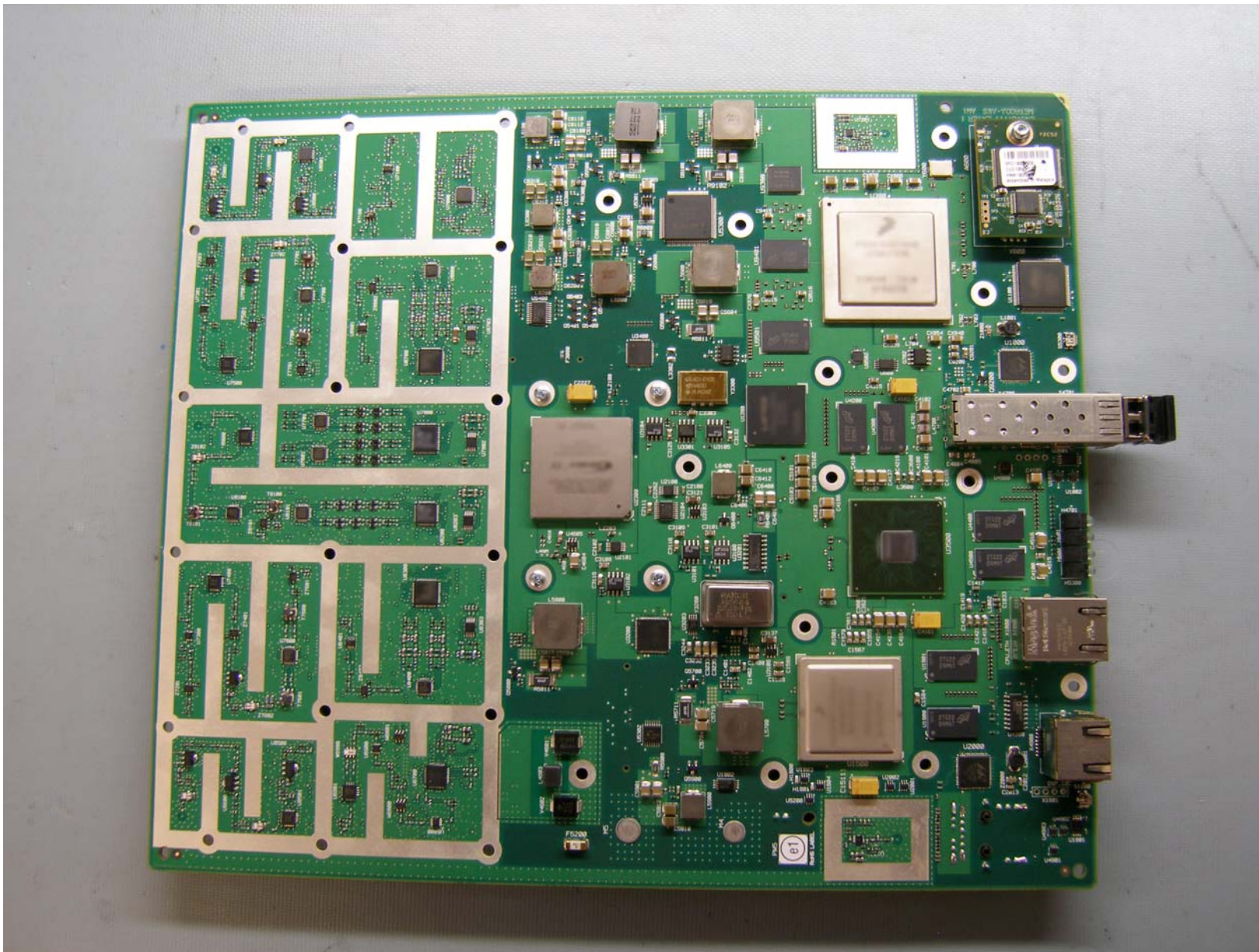
**Front Internal of Transmit Filter**





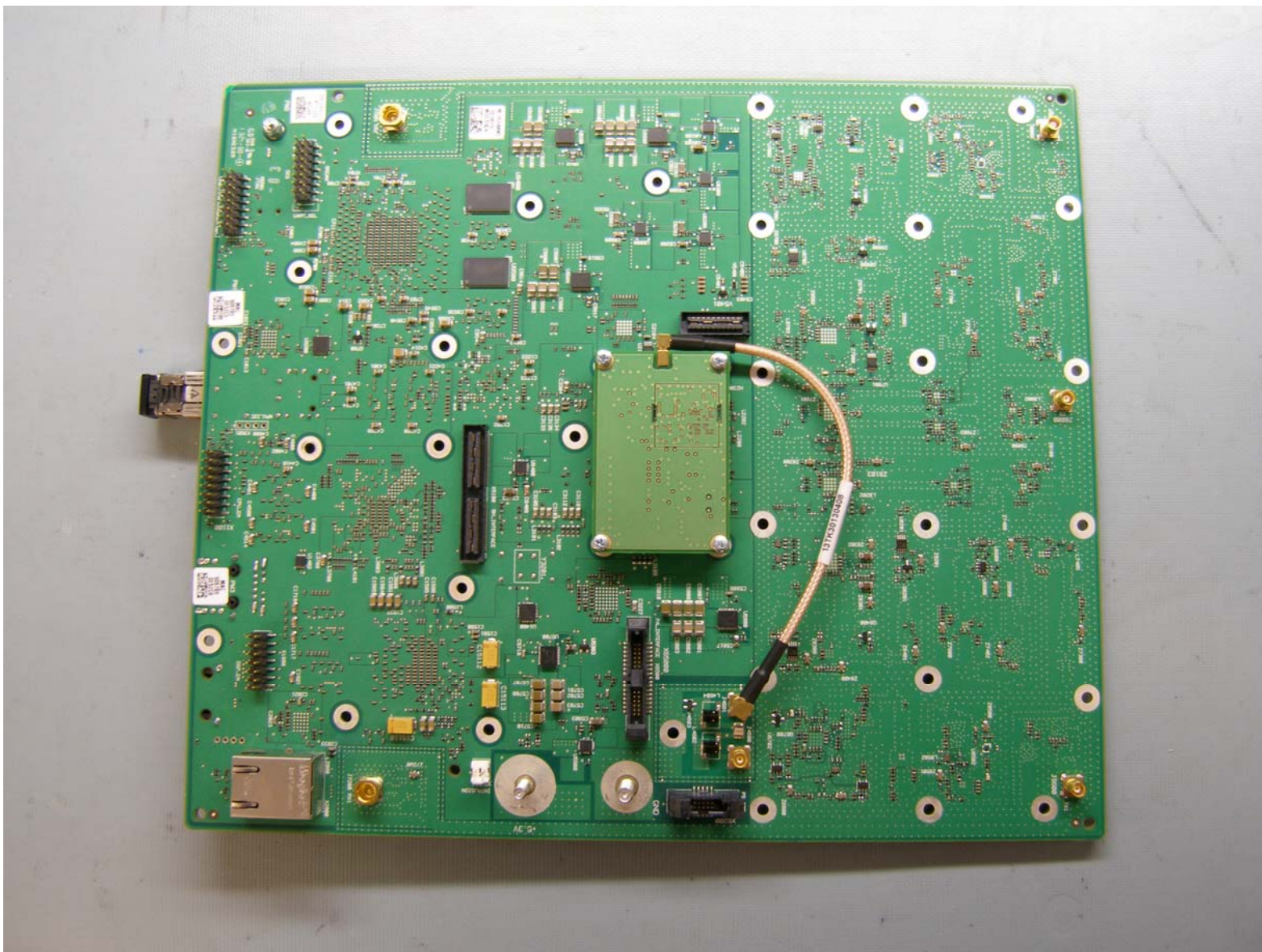
**Rear Internal of Transmit Filter**



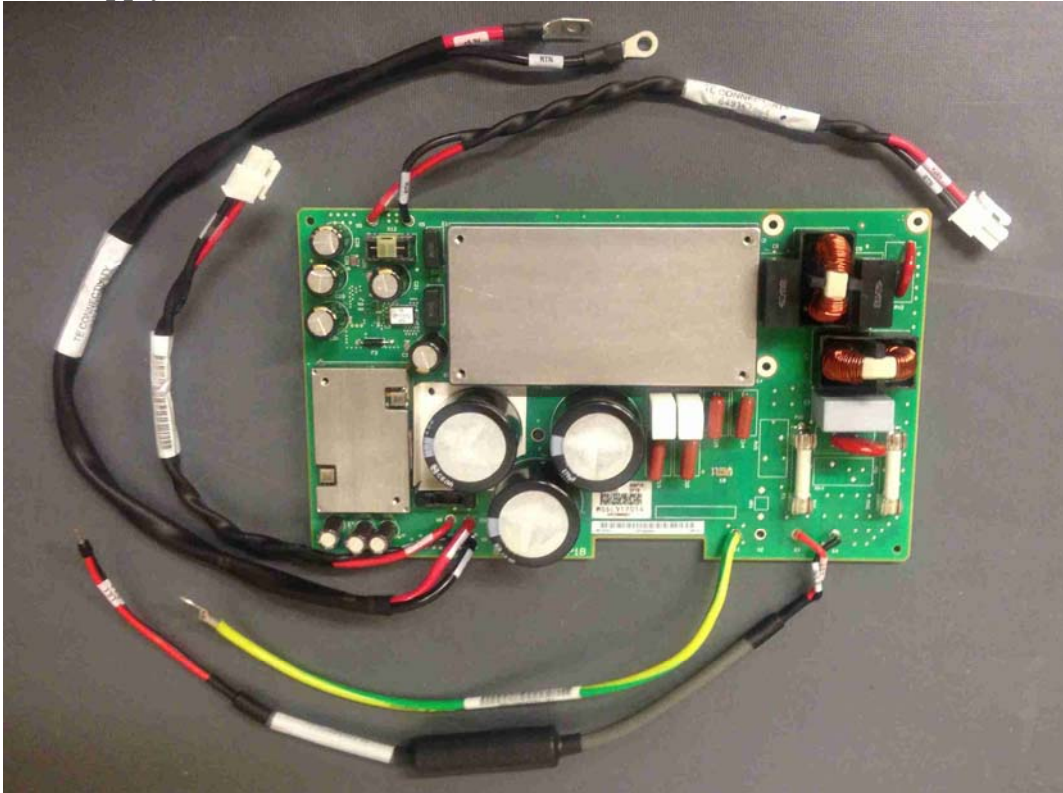




**Rear Internal of DA Board**



**Front of Power Supply**



**Rear of Power Supply**

