

**EXHIBIT 8****Section 2.1033 (b)(7) PHOTOGRAPHS OF THE EQUIPMENT   xxx**

Photographs (8 x 10) of the equipment of sufficient clarity to reveal the construction, the antenna used with device (if any), the controls available to the user, the component placement on the chassis, and the chassis assembly. Smaller photographs may be submitted provided they are sharp and clear, show the necessary detail, and are mounted on 8.5×11 inch paper.

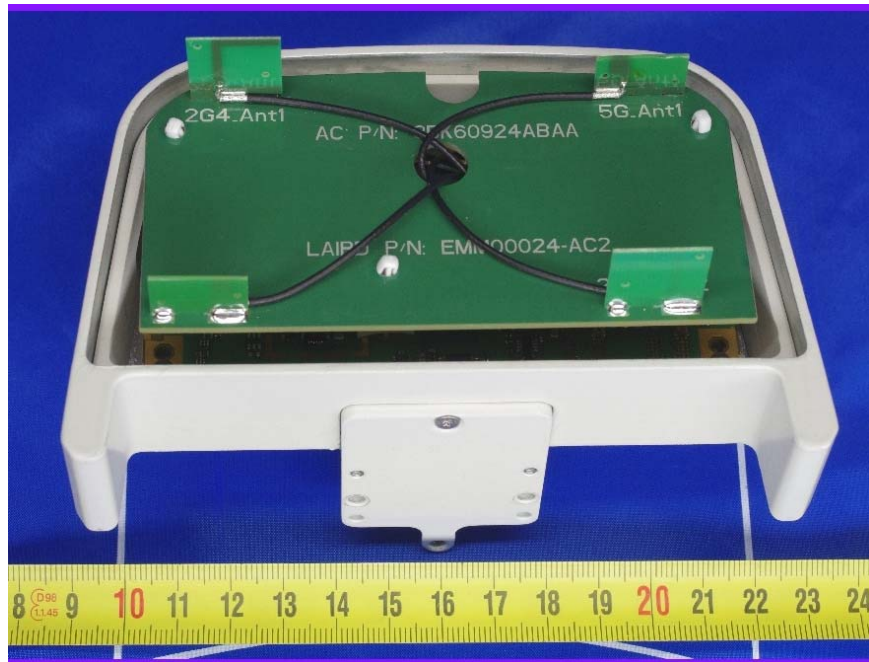
Response

The following pages contain the required photographs of the AS5BBTRX-10A MCO Wi-Fi AP, subject of this application, showing its internal views.

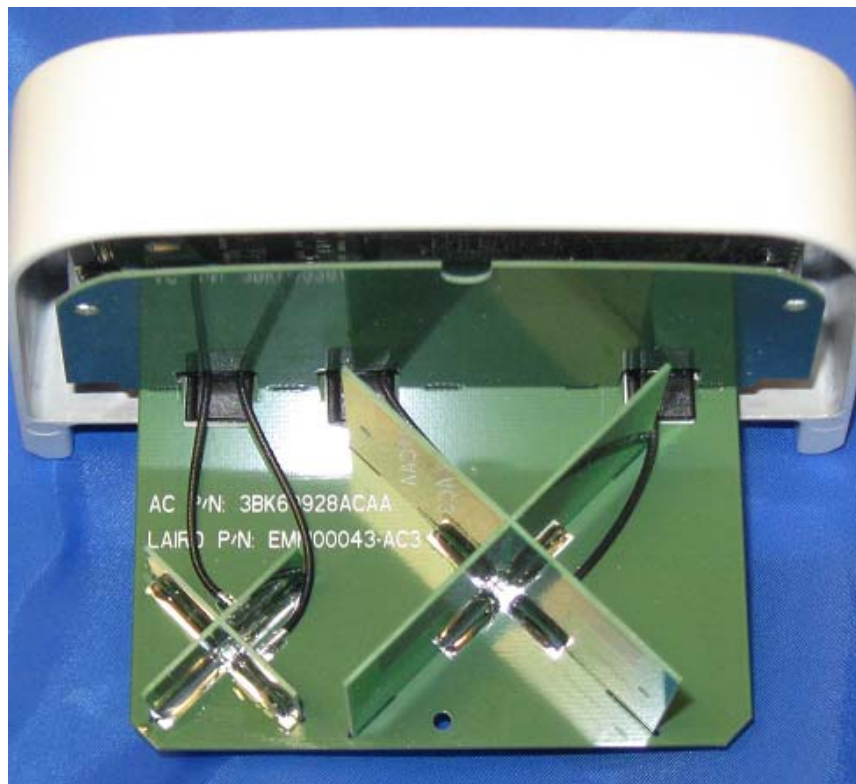
Five internal photos in total without radom are submitted, which include:

- 1) Internal View of MCO Wi-Fi AP with Medium Gain Antennas
- 2) Internal View of MCO Wi-Fi AP with High Gain Antennas
- 3) Back Side View of Medium Gain Antennas
- 4) Back Side View of High Gain Antennas
- 5) Internal View of MCO Wi-Fi AP Module Circuit Board with Antennas Removed

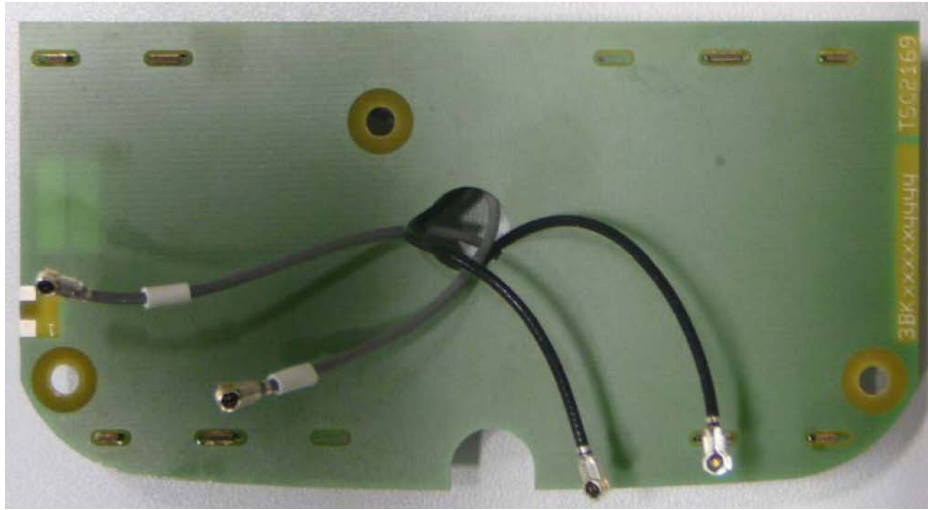
Internal View of MCO Wi-Fi AP with Medium Gain Antennas



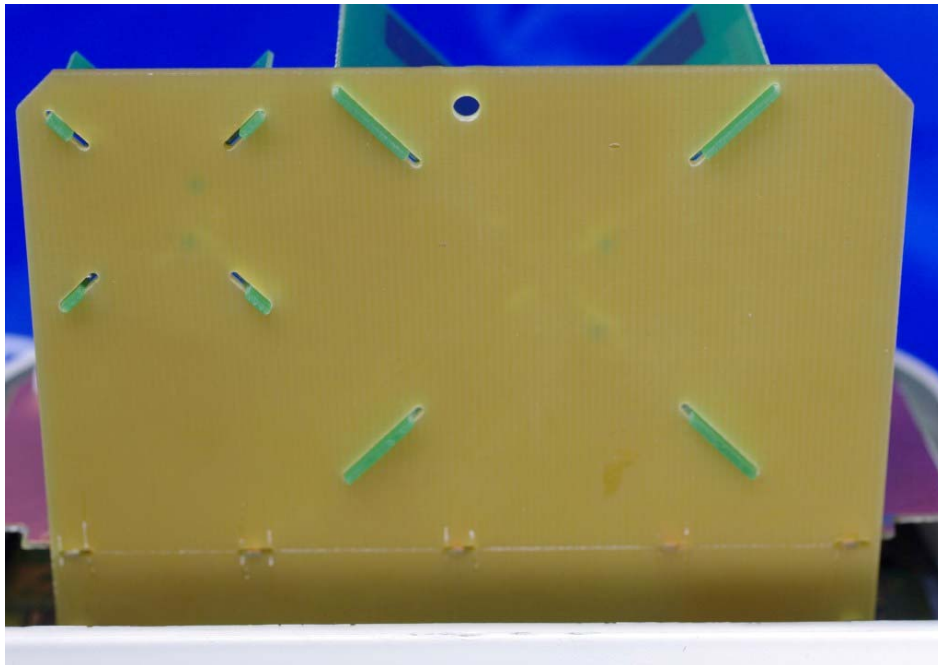
Internal View of MCO Wi-Fi AP with High Gain Antennas



Side View of Medium Gain Antennas



Back Side View of High Gain Antennas



Internal View of MCO Wi-Fi AP Module Circuit Board with Antennas Removed

