

EXHIBIT 8**Section 2.1033 (c)(12) PHOTOGRAPHS OF THE EQUIPMENT**

Photographs (8 x 10) of the equipment of sufficient clarity to reveal equipment construction and layout, including meters, if any, and labels for controls and meters and sufficient views of the internal construction to define component placement and chassis assembly. Insofar as these requirements are met by photographs or drawings contained in instruction manuals supplied with the certification request, additional photographs are necessary only to complete the required showing.

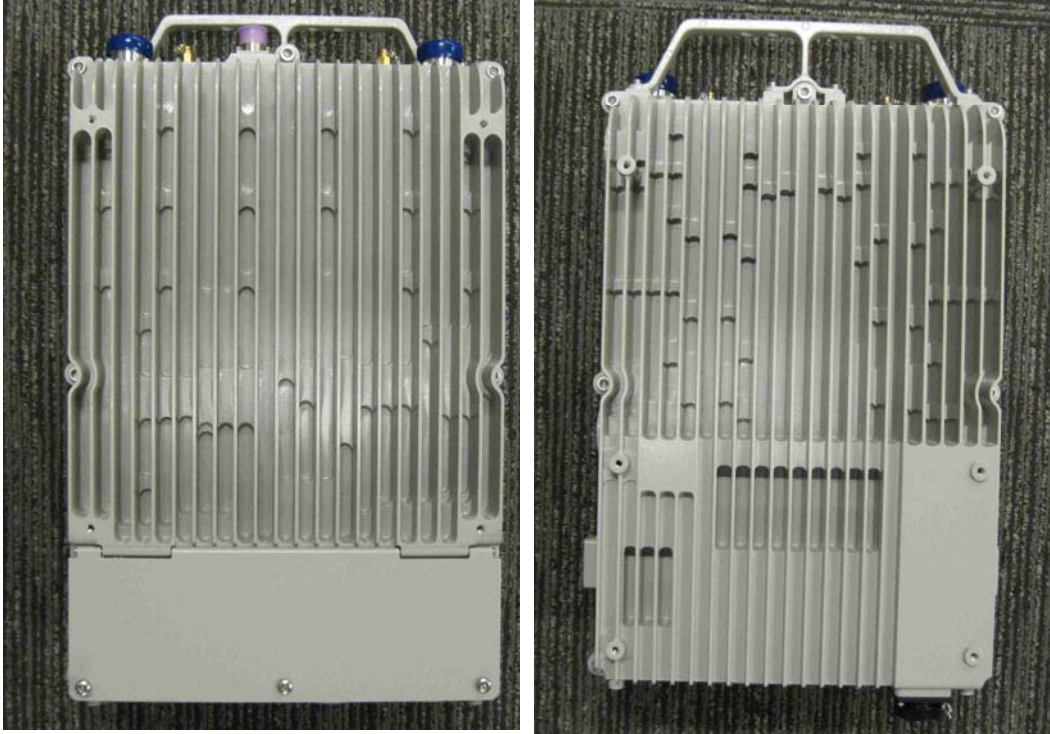
Response

The following pages contain the required external photographs of the AS5BBTRX-08 MCO, subject of this application.

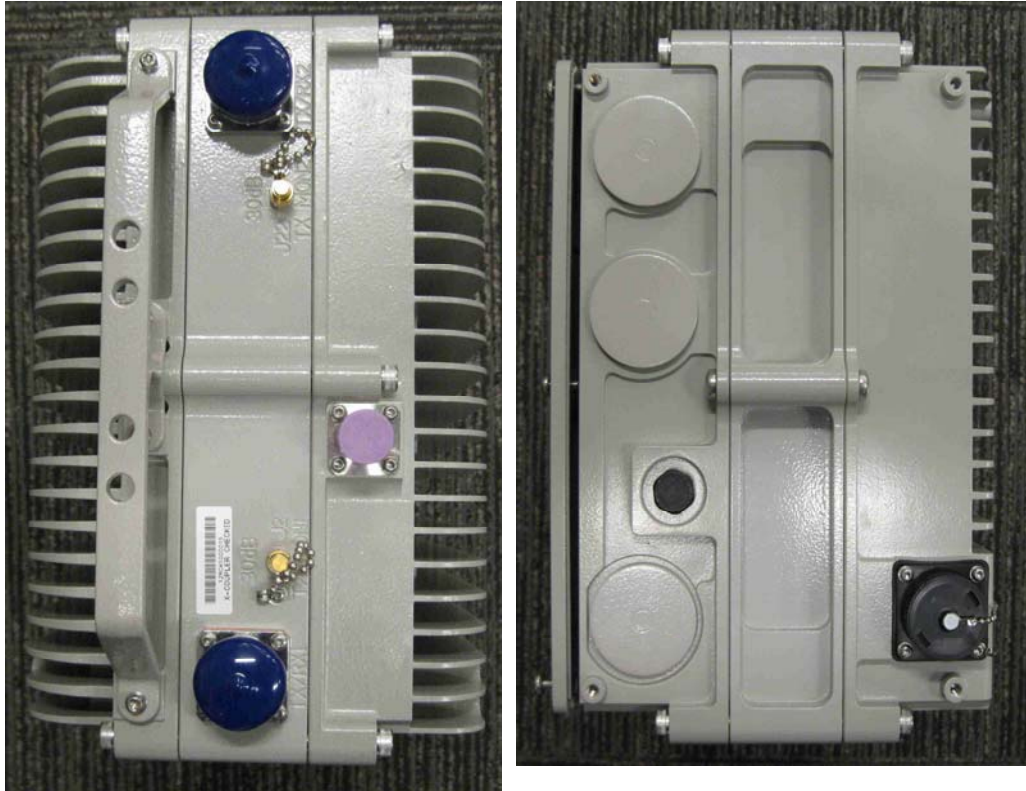
Six photos in total were submitted, which include:

- 1) External Front and Back Views of the MCO,
- 2) External Top and Bottom Views of the MCO,
- 3) External Two Sides Views of the MCO.

External Front and Back Views of the MCO



External Top and Bottom Views of the MCO



External Two Sides Views of the MCO

